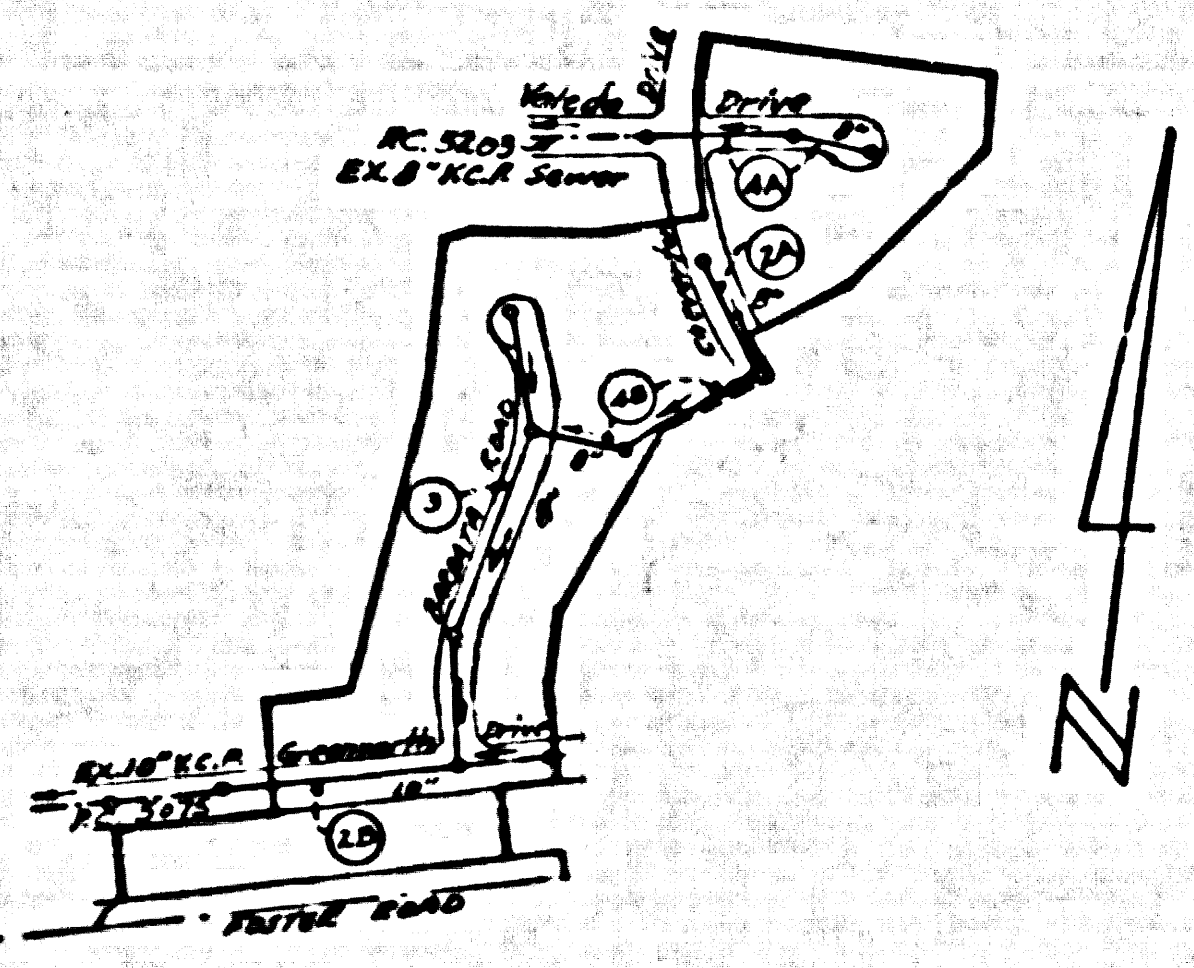


BENCH MARK SY 4038
 14.5' N. of West curb, Luitwiner Ave.
 100 FT. S. of 6' Whitlock Drive
 opposite P.A. #1063580E.
 Elev. 146.191 C.S.P. 1955 Adj.
 La Mirada Quad.



INDEX MAP
 P.C. 5469
 TRACT NO. 24179
 SCALE 1" = 400'

NO CHARGE FOR
 CONNECTIONS
B. Hickland 10-5-60

REVISION:
 RELOCATE MAINLINE SEWER
 PAGE 4 B
John L. P. [Signature] 1-16-61
 OFFICE OF CITY ENGINEER REG. C.E. N93871

MIRADA HILLS BLDG. DIST. NO. 4.08

- NOTE:
1. PROVIDE STAKES ON THE PROPERTY LINES PRODUCED AT RIGHT ANGLES TO THE SEWER LINE AT THE CENTER LINE OF EACH MANHOLE.
 2. THE CITY ENGINEER WILL SURVEY OR LAY OUT ANY PORTION OF THE WORK.
 3. THE OWNER'S AUTHORIZED REPRESENTATIVE SHALL FURNISH THE CITY ENGINEER WITH GRADE SHEETS AND STATIONING FOR ALL HOUSE LATERALS AND Y BRANCHES AND SHALL PROVIDE STAKES FOR THEM AT THEIR PROPER LOCATIONS WITH STATIONING PLAINLY MARKED. ANY CHANGE IN LOCATION SHALL BE REQUESTED IN WRITING BY THE OWNER OR HIS REPRESENTATIVE.
 4. THE PRIVATE ENGINEER SHALL FURNISH THE HOUSE LATERAL DEPTH AT THE PROPERTY LINE BELOW THE TOP OF CURB ELEVATION FOR EACH HOUSE LATERAL ON THE GRADE SHEET.
 5. NO REVISIONS SHALL BE MADE IN THESE PLANS WITHOUT THE APPROVAL OF THE CITY ENGINEER.
 6. USE STANDARD MANHOLE FRAMES AND COVERS, S-117, COVER TO READ "SEWER".
 7. USE STANDARD STRENGTH PIPE EXCEPT AS NOTED.
 8. USE CEMENT MORTAR OR "WEDGE-LOCK" OR "SPEED-SEAL" FOR ALL V.C.P. JOINTS PER SPECS., SECS. 25 & 26.
 9. RESURFACE ALL TRENCH WITHIN PAVED AREA TO MEET L.A. COUNTY ROAD DEPT. OR CALIF. STATE HIGHWAY REQUIREMENTS IN ACCORDANCE WITH PERMITS.
 10. INCREASE FOUR FEET OF SEWER AT POINTS OF INTERFERENCE WITH POLES, CASE HL, S-172.
 11. HOUSE LATERALS TO BE CONSTRUCTED WITH INVERTS AT PROPERTY LINE AND 6 FEET BELOW CURB GRADE EXCEPT AS NOTED.
 12. ALL STRUCTURES SHALL BE BRICK SEWER STRUCTURES, S-104, EXCEPT AS NOTED.
 13. FOR ALLOWABLE LEAKAGE TEST USE FORMULA NO. 1, SPECS., SEC. 54.
 14. MANHOLE TOPS IN UNIMPROVED RIGHTS-OF-WAY TO BE SIX INCHES ABOVE FINISHED GRADE.
 15. THE CONTRACTOR SHALL NOTIFY THE CITY ENGINEER BY TELEPHONE, MADISON 9-22, EXT. 81-362, AT LEAST TWENTY-FOUR HOURS BEFORE STARTING ANY WORK UNDER THIS CONTRACT.
 16. STANDARD SPECIFICATIONS DATED JANUARY 1, 1960, ON FILE IN CITY, APPLY IN THE CONSTRUCTION OF THIS PROJECT.

PROFILE ALIGNMENT AND GRADE OF P.C. 5469
 SANITARY SEWERS PAGE 1
 TO BE CONSTRUCTED IN

TRACT NO. 24179
 PRIVATE CONTRACT NO. 5469

W.S.34
 2 SHEETS, 4 PAGES
 SCALE: VERT. 1" = 4'
 HORIZ. 1" = 40'
 AUGUST, 1960
 PREPARED IN THE OFFICES OF
 JENNINGS ENGINEERING CO.
 BY: *G. J. Jennings*
 REG. C.E. NO. 7858
 FOR LEGEND SEE PLAN NO. S-A-64

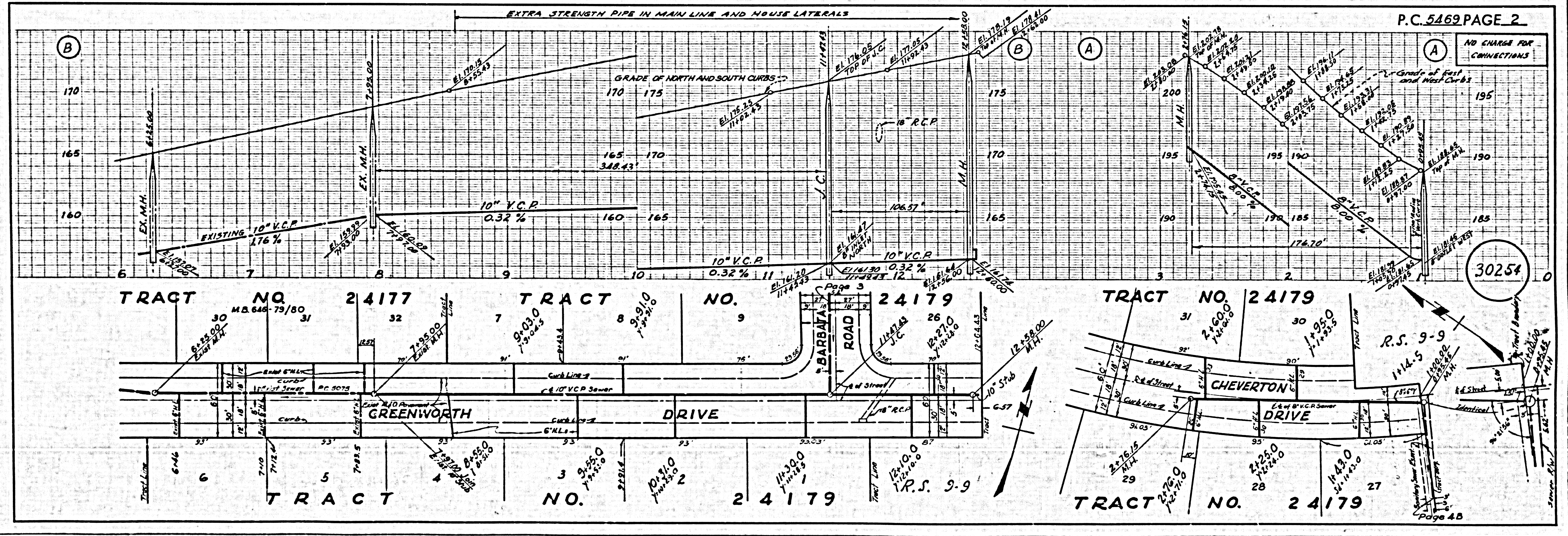
30253

NOTE:
 GRADES TO WHICH THE IMPROVEMENT IS TO BE CONSTRUCTED ARE SHOWN ON PLANS AND PROFILES. CURB POINTS FOR TOP OF CURBS, CENTER LINE OF STREETS, OR CENTER LINE OF ALLEYS ARE SHOWN BY CIRCLES ON PROFILES. AT ALL POINTS BETWEEN DESIGNATED POINTS THE GRADE SHALL BE ESTABLISHED SO AS TO CONFORM TO A STRAIGHT LINE DRAWN BETWEEN SAID DESIGNATED POINTS.
 ELEVATIONS ARE IN FEET ABOVE U.S.C. & G.S. SEA LEVEL DATUM OF 1929.
 THIS DRAWING AND THE DATA HEREON ARE HEREBY MADE A PART OF THE SPECIFICATIONS.
 WORK SHALL BE CONSTRUCTED ACCORDING TO SPECIFICATIONS ON FILE IN THE OFFICES OF THE CITY ENGINEER AND SHALL BE PROSECUTED ONLY IN THE PRESENCE OF THE CITY ENGINEER.
 BEFORE WORK CAN BE STARTED, THE CONTRACTOR MUST OBTAIN A PERMIT TO EXCAVATE IN CITY STREETS FROM THE L.A. COUNTY ROAD DEPT., DISTRICT OFFICE NO. 5, AND MAKE A DEPOSIT WITH THE CITY OF MIRADA HILLS.
 APPROVAL OF THIS PLAN BY THE CITY OF MIRADA HILLS DOES NOT CONSTITUTE A REPRESENTATION AS TO THE ACCURACY OF THE LOCATION OF OR THE EXISTENCE OR NON-EXISTENCE OF ANY UNDERGROUND UTILITY PIPES OR STRUCTURE WITHIN THE LIMITS OF THIS PROJECT. THIS NOTE APPLIES TO ALL PAGES.
 IF WORK IS TO BE DONE IN A STATE HIGHWAY, A PERMIT MUST BE OBTAINED FROM THE STATE OF CALIFORNIA, DIVISION OF HIGHWAYS, 128 SOUTH MAIN STREET.

CITY OF MIRADA HILLS, CALIFORNIA

APPROVED, JOHN A. LAMBE, CITY ENGINEER
 APPROVED, C. C. COMPTON, CHIEF ENGINEER
 CO. MAIL DIST. NO. 12
 BY: *C. E. [Signature]* BY: *J. [Signature]*
 REG. SANITATION ENGINEER OFFICE ENGINEER
 CHECKED BY: *J. G. [Signature]* 10-6-60
 OFFICE OF CITY ENGINEER, REG. C. E. NO. 3446

SUBMITTED BY: *John L. P. [Signature]* 10-5-60
 1057 CERRITOS REGIONAL ENGINEER REG. C.E. N93871



P.C. 5469 PAGE 2

NO CHARGE FOR
 CONNECTIONS

30254

R.S. 9-9

Page 4B

