

BENCH MARK
 Monument in N.W. marked "B.M. N-103-1852
 R.F. 43" 12.5' N. of E. of Valley Blvd. f. at
 N.W. corner of Valley Blvd. f. to Soda Road
 F.B. 1376, Pg. 22, 1952 Mj. Elev. 418.968

PUENTE BLDG. DIST. NO. 2

PROFILE ALIGNMENT AND GRADE OF **P.C. 5470**
SANITARY SEWERS PAGE 1

TO BE CONSTRUCTED IN **J.N. 0353.171**
TRACT N° 25523

PRIVATE CONTRACT NO. 5470

W.S. 38
 2 SHEETS; 4 PAGES

SCALE: VERT. 1" = 4' HORIZ. 1" = 40'
 MARCH, 1960
 PREPARED IN THE OFFICES OF
ROSENTHAL ENGINEERING CO.

By: *Arthur J. Rosenthal*
 REG. C. E. NO. 8842

FOR LEGEND SEE PLAN NO. S-A-64

NOTE:
 GRADES TO WHICH THIS IMPROVEMENT IS TO BE CONSTRUCTED ARE SHOWN ON PLANS AND PROFILES. GRADE POINTS FOR TOP OF CURBS, CENTER LINE OF STREETS OR CENTER LINE OF ALLEYS ARE SHOWN BY CIRCLES WITH PROFILES. AT ALL POINTS BETWEEN DESIGNATED POINTS THE GRADE SHALL BE ESTABLISHED SO AS TO CONFORM TO A STRAIGHT LINE DRAWN BETWEEN SAID DESIGNATED POINTS. ELEVATIONS ARE IN FEET ABOVE U.S.C. & G.S. SEA LEVEL DATUM OF 1929.
 THIS DRAWING AND THE DATA HEREON ARE HEREBY MADE A PART OF THE SPECIFICATIONS. WORK SHALL BE CONSTRUCTED ACCORDING TO SPECIFICATIONS ON FILE IN THE OFFICE OF THE COUNTY ENGINEER AND SHALL BE PROSECUTED ONLY IN THE PRESENCE OF THE COUNTY ENGINEER.
 BEFORE WORK CAN BE STARTED THE CONTRACTOR MUST OBTAIN A PERMIT TO EXCAVATE IN COUNTY STREETS FROM THE L.A. COUNTY ROAD DEPT., DISTRICT OFFICE NO. 1 AND FROM P.E.B. TO THE COUNTY ENGINEER ROOM 324 PAN AMERICAN BUILDING, 251 SO. BROADWAY SUFFICIENT TO COVER THE COST OF CONSTRUCTION INSPECTION AND RECORD PLANS.
 APPROVAL OF THIS PLAN BY THE COUNTY OF LOS ANGELES DOES NOT CONSTITUTE A REPRESENTATION AS TO THE ACCURACY OF THE LOCATION OF OR THE EXISTENCE OR NON-EXISTENCE OF ANY UNDERGROUND UTILITY PIPE, OR STRUCTURE WITHIN THE LIMITS OF THIS PROJECT. THIS NOTE APPLIES TO ALL PAGES.
 IF WORK IS TO BE DONE IN A STATE HIGHWAY, A PERMIT MUST BE OBTAINED FROM THE STATE OF CALIFORNIA, DIVISION OF HIGHWAYS, 138 SOUTH SPRING STREET.

COUNTY OF LOS ANGELES, CALIFORNIA

APPROVED, JOHN A. LAMBE, COUNTY ENGINEER APPROVED, *C.R. Connor*, CHIEF ENGINEER

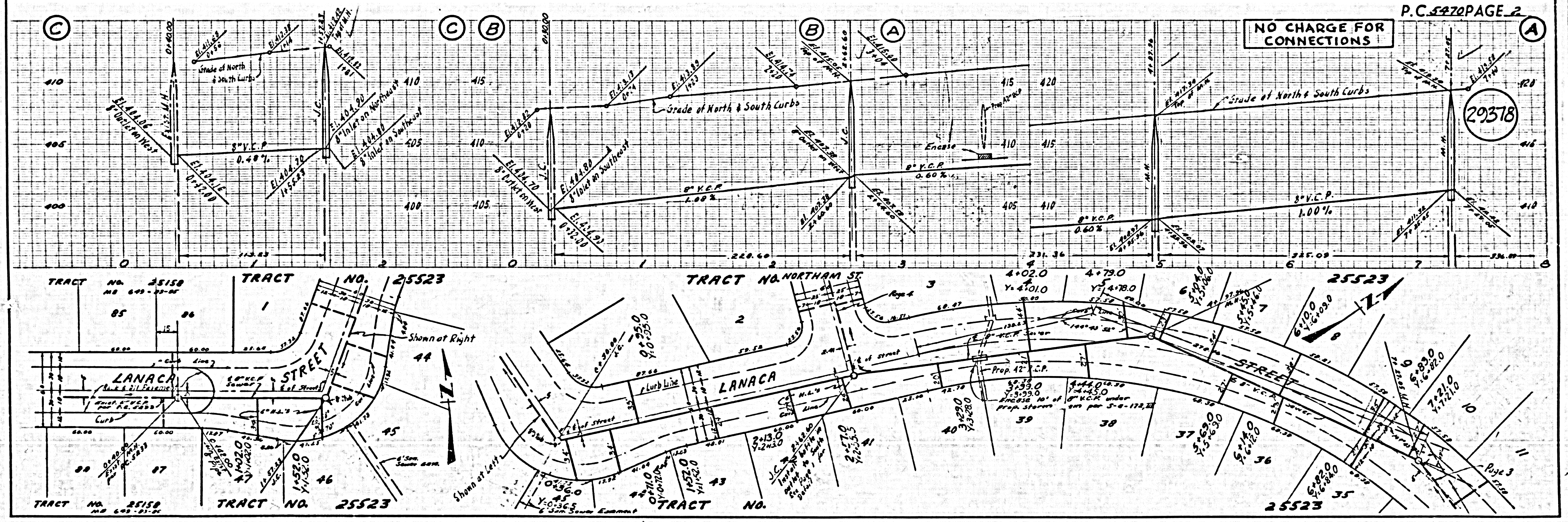
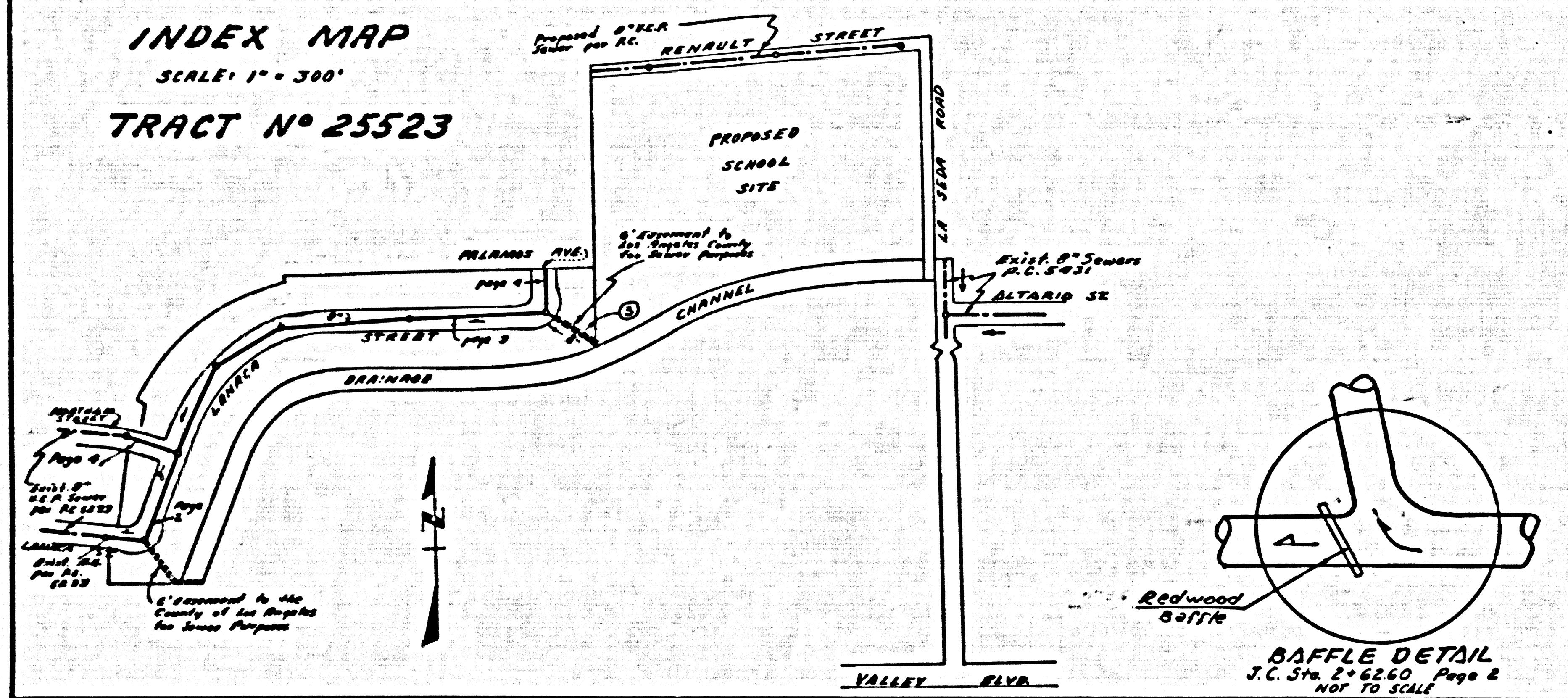
BY: *C. H. Hughes* SANITATION ENGINEER BY: *M. J. Kottmann* CHIEF ENGINEER
 CHECKED BY: *B. F. Worling* 4-15-60
 OFFICE OF COUNTY ENGINEER, REG. C. E. NO. 11636

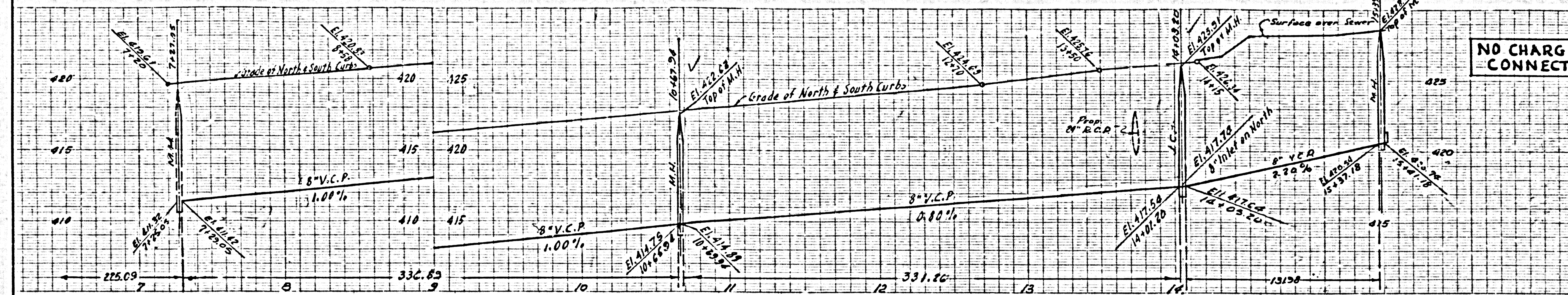
- NOTES:**
1. PROFILE STAKES ON THE PROPERTY LINE OR PROPERTY LINES PRODUCED AT RIGHT ANGLES TO THE SEWER LINE AT THE CENTER LINE OF EACH MANHOLE.
 2. NO REPRESENTATIVE OF THE COUNTY ENGINEER WILL SURVEY OR LAY OUT ANY PORTION OF THE WORK.
 3. THE OWNER OR HIS AUTHORIZED REPRESENTATIVE SHALL FURNISH THE COUNTY ENGINEER WITH GRADE SHEETS AND STATIONING FOR ALL HOUSE LATERALS AND Y BRANCHES AND SHALL PROVIDE STAKES FOR THEM AT THEIR PROPER LOCATIONS WITH STATIONING PLAINLY MARKED. ANY CHANGE IN LOCATION SHALL BE REQUESTED IN WRITING BY THE OWNER OR HIS REPRESENTATIVE.
 4. THE PRIVATE ENGINEER SHALL FURNISH THE HOUSE LATERAL DEPTH AT THE PROPERTY LINE BELOW THE TOP OF CURB ELEVATION FOR EACH HOUSE LATERAL ON THE GRADE SHEET.
 5. NO REVISIONS SHALL BE MADE IN THESE PLANS WITHOUT THE APPROVAL OF THE COUNTY ENGINEER.
 6. USE STANDARD MANHOLE FRAMES AND COVERS, S-117, BRICK-REINFORCED.
 7. USE STANDARD STRENGTH PIPE BRICK-REINFORCED.
 8. USE CEMENT MORTAR OR "WEDGE-LOCK" OR "SPED-SEAL" FOR ALL Y.C.P. JOINTS PER SPEC. SECS. 34 & 41.
 9. RESURFACE ALL TRENCH WITHIN PAVED AREA TO MEET L.A. COUNTY ROAD DEPT. OR CALIF. STATE HIGHWAY REQUIREMENTS IN ACCORDANCE WITH PERMITS.
 10. ENCASE FOUR FEET OF SEWER AT POINTS OF INTERFERENCE WITH POLES, CASE III, S-117.
 11. HOUSE LATERALS TO BE CONSTRUCTED WITH INVERTS AT PROPERTY LINE 6 FEET BELOW CURB GRADE.
 12. ALL STRUCTURES SHALL BE BRICK SEWER STRUCTURES, S-104, EXCEPT AS NOTED.
 13. FOR ALLOWABLE LEAKAGE TEST USE FORMULA NO. 1, SPEC. S, SEC. 54.
 14. MANHOLE TOPS IN UNIMPROVED RIGHTS-OF-WAY TO BE SIX INCHES ABOVE FINISHED GRADE.
 15. THE CONTRACTOR SHALL NOTIFY THE CONSTRUCTION & STORM DRAIN DIVISION BY TELEPHONE, MADISON 5-4747, EXT. 342, AT LEAST TWENTY-FOUR HOURS BEFORE STARTING ANY WORK UNDER THIS CONTRACT.
 16. STANDARD SPECIFICATIONS DATED JAN. 1, 1960 APPLY IN THE CONSTRUCTION OF THIS PROJECT.
 17. CONTRACTOR TO FURNISH BAFFLE OF 2 PIECES OF 2" X 6" REDWOOD FASTENED TOGETHER.

NO CHARGE FOR CONNECTIONS
T. J. C. Rosenthal 4-14-60

INDEX MAP
 SCALE: 1" = 300'

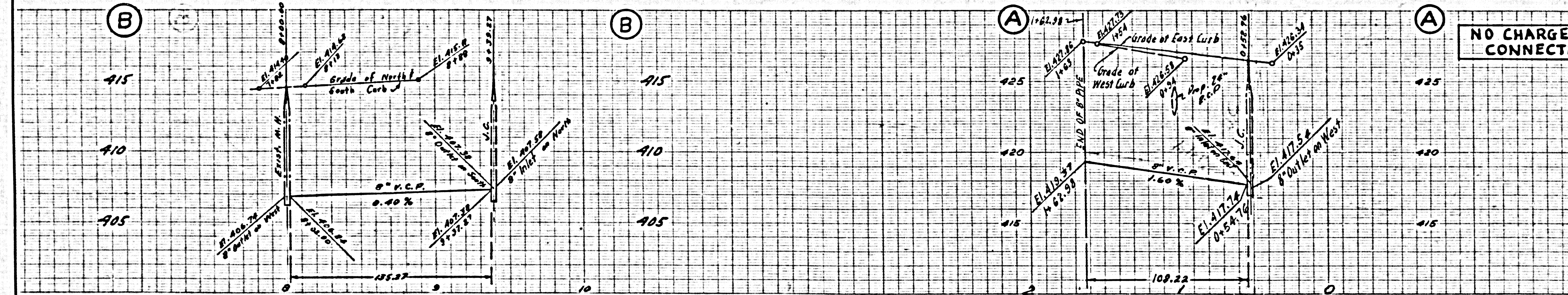
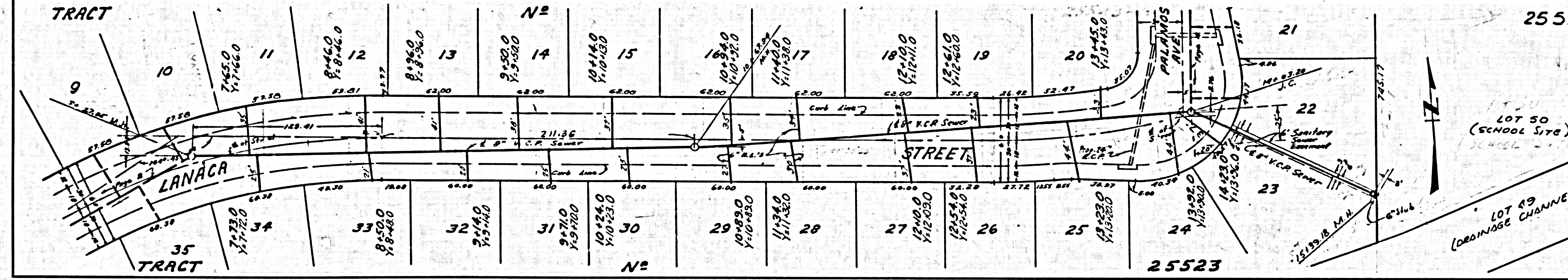
TRACT N° 25523





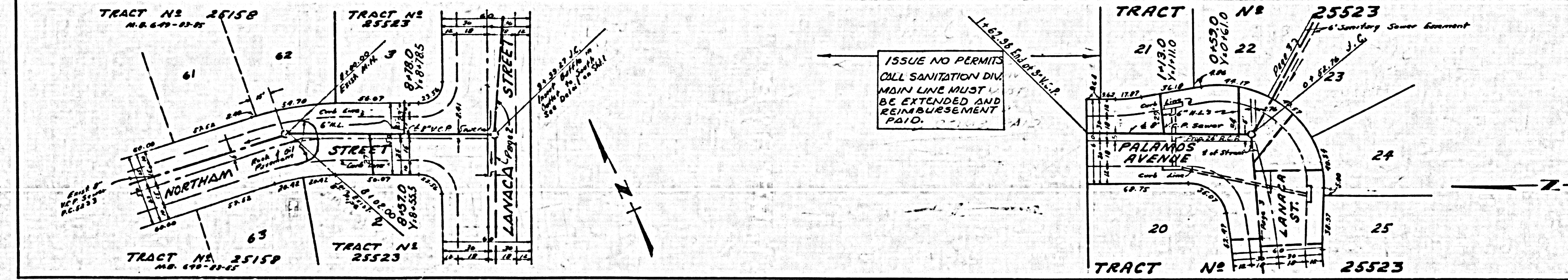
NO CHARGE FOR CONNECTIONS

29379



NO CHARGE FOR CONNECTIONS

29380



ISSUE NO PERMITS CALL SANITATION DIV. MAIN LINE MUST BE EXTENDED AND REIMBURSEMENT PAID.