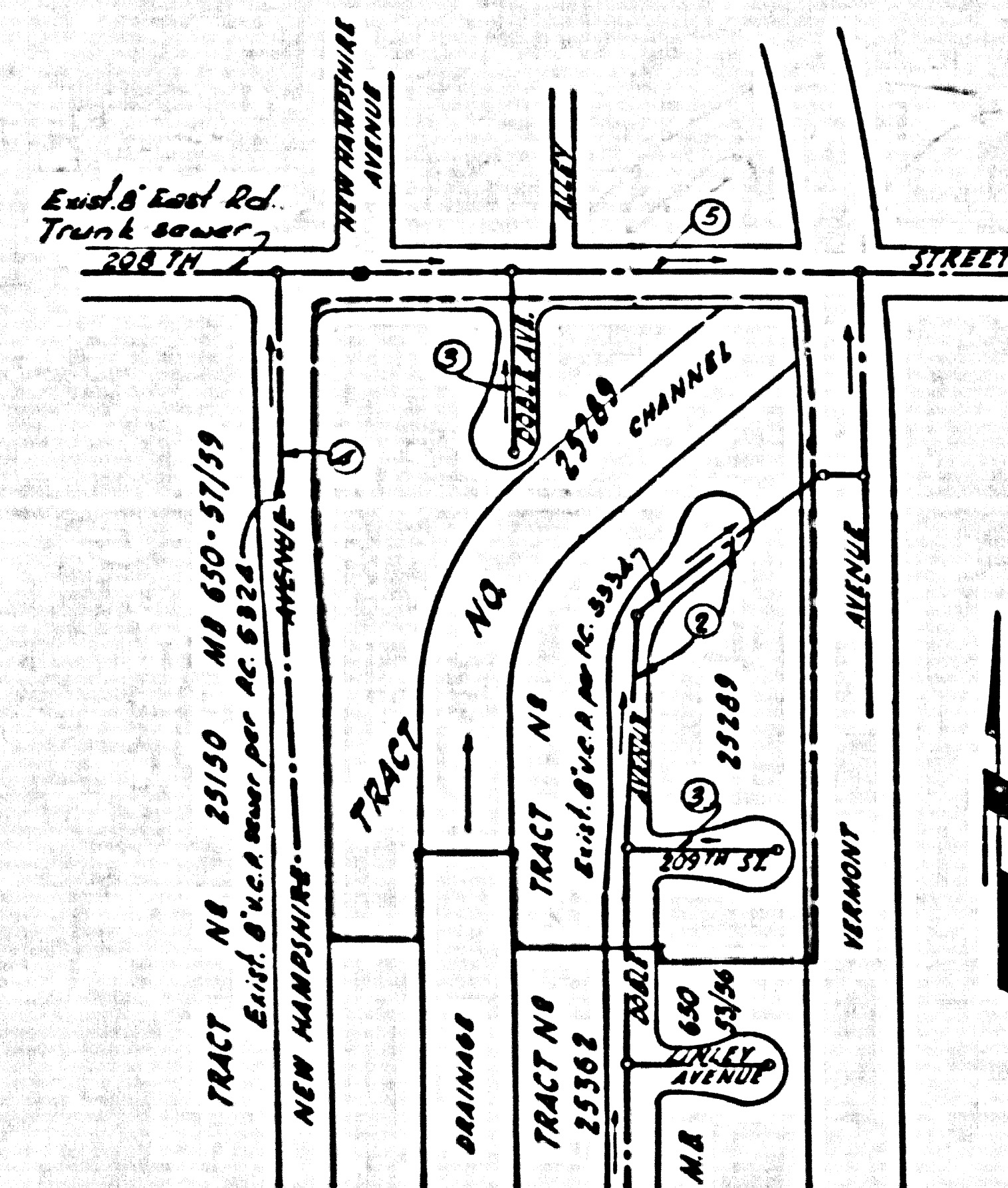


LOMITA BLDG. DIST. NO. 71

PROFILE ALIGNMENT AND GRADE OF  
**SANITARY SEWERS** P.C. 5472  
 TO BE CONSTRUCTED IN PAGE 1  
 U.N. 0353.13  
**TRACT NO. 25289**



**INDEX MAP**  
 SCALE 1"=100'  
**TRACT NO. 25289**  
 P.C. NO. 5472

**BENCH MARK**  
 57.3046 Elev. 41.359  
 4.67 West curb Normandie Avenue  
 Opposite power pole # 271311  
 (4' W. from N. of Street Stop Street)  
 Ordinate Book 1753, 117

- NOTES:**
1. PROVIDE STAKES ON THE PROPERTY LINE OR PROPERTY LINES PRODUCED AT RIGHT ANGLES TO THE SEWER LINE AT THE CENTER LINE OF EACH MANHOLE.
  2. NO REPRESENTATIVE OF THE COUNTY ENGINEER WILL SURVEY OR LAY OUT ANY PORTION OF THE WORK.
  3. THE OWNER OR HIS AUTHORIZED REPRESENTATIVE SHALL FURNISH THE COUNTY ENGINEER WITH GRADE SHEETS AND STATIONING FOR ALL HOUSE LATERALS AND Y BRANCHES AND SHALL PROVIDE STAKES FOR THEM AT THEIR PROPER LOCATIONS WITH STATIONING PLAINLY MARKED. ANY CHANGE IN LOCATION SHALL BE REQUESTED IN WRITING BY THE OWNER OR HIS REPRESENTATIVE.
  4. THE PRIVATE ENGINEER SHALL FURNISH THE HOUSE LATERAL DEPTH AT THE PROPERTY LINE BELOW THE TOP OF CURB ELEVATION FOR EACH HOUSE LATERAL ON THE GRADE SHEET.
  5. NO REVISIONS SHALL BE MADE IN THESE PLANS WITHOUT THE APPROVAL OF THE COUNTY ENGINEER.
  6. USE STANDARD MANHOLE FRAMES AND COVERS, S-117, EXCEPT AS NOTED.
  7. USE STANDARD STRENGTH PIPE EXCEPT AS NOTED.
  8. USE ANY COMPANION "WEDGE-LOCK" OR "SPEED-SEAL" FOR ALL V.C.P. JOINTS PER SPEC'S, SECS. 36 & 47.
  9. RESURFACE ALL TRENCH WITHIN PAVED AREA TO MEET L.A. COUNTY ROAD DEPT. OR CALIF. STATE HIGHWAY REQUIREMENTS IN ACCORDANCE WITH PROFILES.
  10. ENCASE FOUR FEET OF SEWER AT POINTS OF INTERFERENCE WITH POLES, CASE III, S-112.
  11. HOUSE LATERALS TO BE CONSTRUCTED WITH INVERTS AT PROPERTY LINE 6 FEET BELOW CURB GRADE EXCEPT AS NOTED.
  12. ALL STRUCTURES SHALL BE BRICK SEWER STRUCTURES, S-104, EXCEPT AS NOTED.
  13. FOR ALLOWABLE LEAKAGE TEST USE FORMULA NO. 1, SPEC'S, SEC. 54.
  14. MANHOLE TOPS IN UNIMPROVED RIGHTS-OF-WAY TO BE SIX INCHES ABOVE FINISHED GRADE.
  15. THE CONTRACTOR SHALL NOTIFY THE CONSTRUCTION & STORM DRAIN DIVISION BY TELEPHONE, MADISON 5-4747, EXT. 362, AT LEAST TWENTY-FOUR HOURS BEFORE STARTING ANY WORK UNDER THIS CONTRACT.
  16. STANDARD SPECIFICATIONS DATED JAN. 1, 1960 APPLY IN THE CONSTRUCTION OF THIS PROJECT.
  17. ALL LOCATIONS SHOWN FOR EXISTING SUBSTRUCTURES HAVE BEEN TAKEN FROM RECORDS AND THEIR CORRECTNESS AND COMPLETENESS IN ANY WAY GUARANTEED. IT SHALL BE THE CONTRACTOR'S RESPONSIBILITY ALONE TO DEFINITELY LOCATE ALL UNDERGROUND LINES OF EVERY NATURE WHETHER SHOWN HEREON OR NOT, AND PROTECT THEM FROM DAMAGE BY ANY OPERATION IN CONNECTION WITH THE PROJECTION OF THIS WORK.

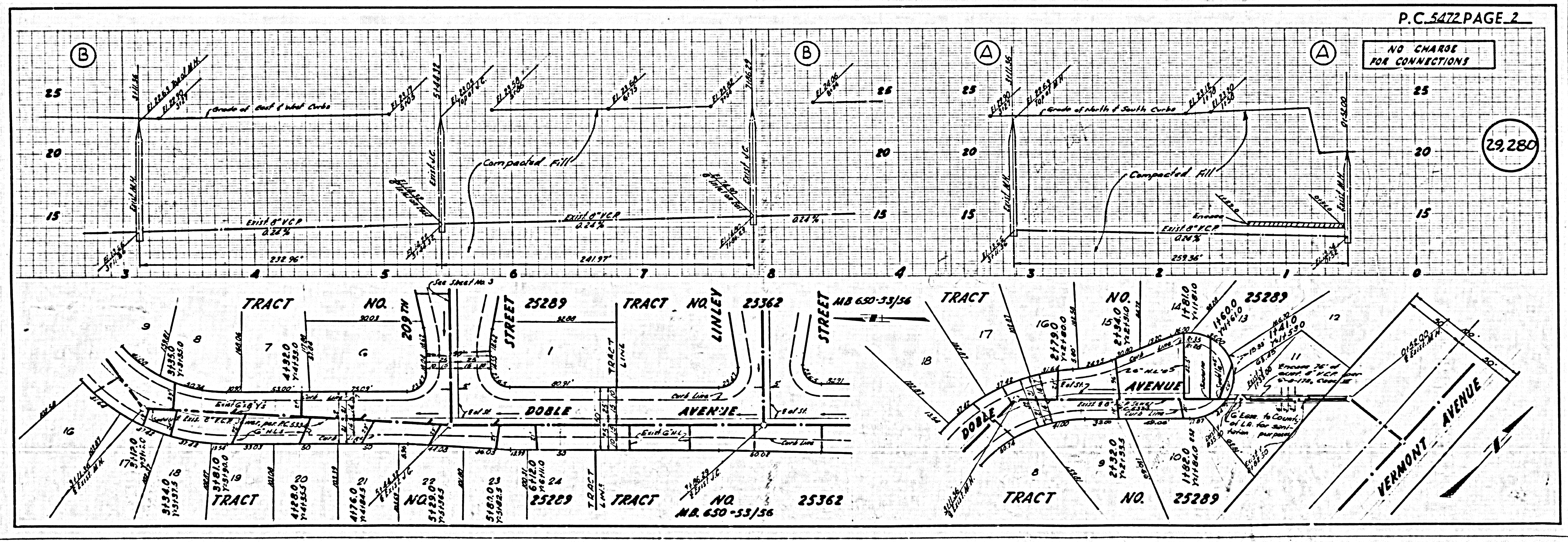
Before breaking into any existing structure and before final acceptance of this work, County Sanitation Districts (DU 4-1281) shall be notified in order that required inspection can be made.

NO CHARGE FOR CONNECTIONS 3-17-60

PRIVATE CONTRACT NO. 5472  
 W.S. 26  
 3 SHEETS; 5 PAGES  
 SCALE: HORIZ. 1"=40' VERT. 1"=4'  
 MARCH, 1950  
 PREPARED IN THE OFFICES OF  
 BARCLAY, PEARSON CO., INC.  
 343 HAWTHORNE WAY  
 HAWTHORNE, CALIFORNIA  
 By: *Edward J. Larson*  
 REG. C. E. NO. 7778  
 FOR LEGEND SEE PLAN NO. S-A-64

**NOTE:**  
 GRADES TO WHICH THIS IMPROVEMENT IS TO BE CONSTRUCTED ARE SHOWN ON PLANS AND PROFILES. GRADE POINTS FOR TOP OF CURB, CENTER LINE OF STREETS, ON CENTER LINE OF ALLEYS ARE SHOWN BY CIRCLES ON PROFILES. AT ALL POINTS BETWEEN DESIGNATED POINTS THE GRADE SHALL BE ESTABLISHED SO AS TO CONFORM TO A STRAIGHT LINE DRAWN BETWEEN SAID DESIGNATED POINTS.  
 ELEVATIONS ARE IN FEET ABOVE U.S.C. & G.S. SEA LEVEL DATUM OF 1929.  
 THIS DRAWING AND THE DATA HEREON ARE HEREBY MADE A PART OF THE SPECIFICATIONS.  
 WORK SHALL BE CONSTRUCTED ACCORDING TO SPECIFICATIONS ON FILE IN THE OFFICE OF THE COUNTY ENGINEER AND SHALL BE PROSECUTED ONLY IN THE PRESENCE OF THE COUNTY ENGINEER.  
 BEFORE WORK CAN BE STARTED THE CONTRACTOR MUST OBTAIN A PERMIT TO EXCAVATE IN COUNTY STREETS FROM THE L.A. COUNTY ROAD DEPT., DISTRICT OFFICE NO. 3, AND PAY A FEE TO THE COUNTY ENGINEER ROOM 234 PAN AMERICAN BUILDING, 215 SO. BROADWAY SUFFICIENT TO COVER THE COST OF CONSTRUCTION INSPECTION AND RECORD PLANS.  
 APPROVAL OF THIS PLAN BY THE COUNTY OF LOS ANGELES DOES NOT CONSTITUTE A REPRESENTATION AS TO THE ACCURACY OF THE LOCATION OR OF THE EXISTENCE OR NON-EXISTENCE OF ANY UNDERGROUND UTILITY PIPE OR STRUCTURE WITHIN THE LIMITS OF THIS PROJECT. THIS NOTE APPLIES TO ALL PAGES.  
 IF WORK IS TO BE DONE IN A STATE HIGHWAY, A PERMIT MUST BE OBTAINED FROM THE STATE OF CALIFORNIA, DIVISION OF HIGHWAYS, 120 SOUTH SHINE STREET.

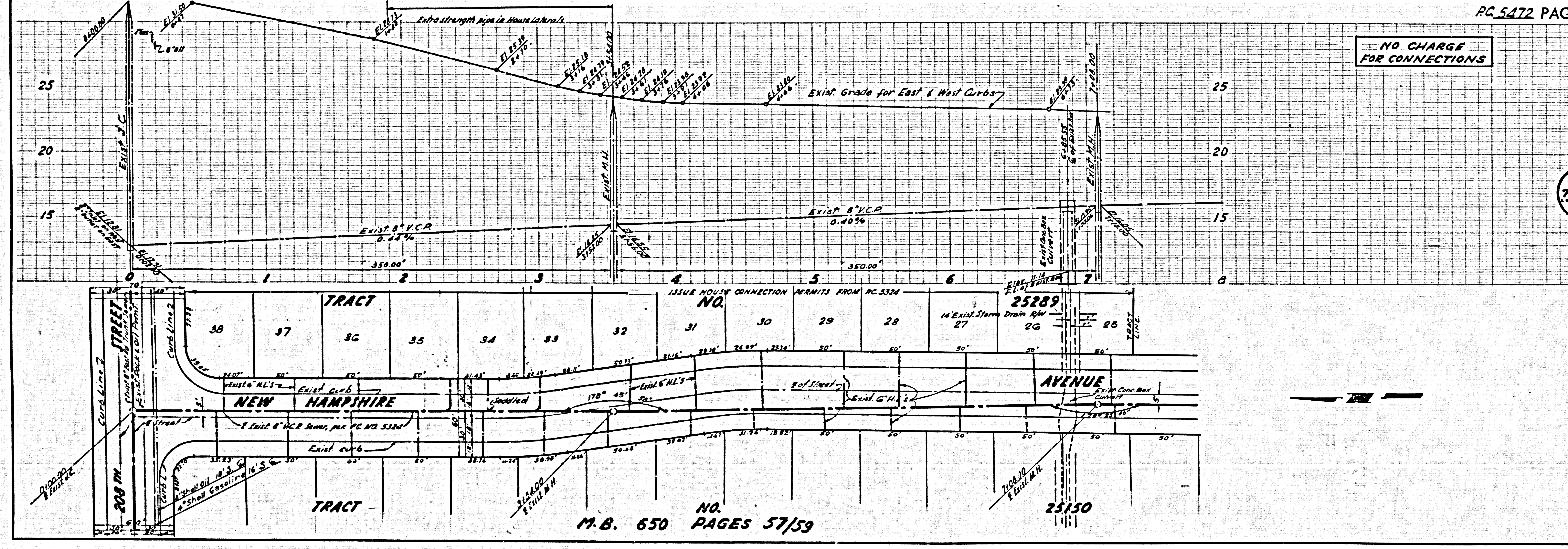
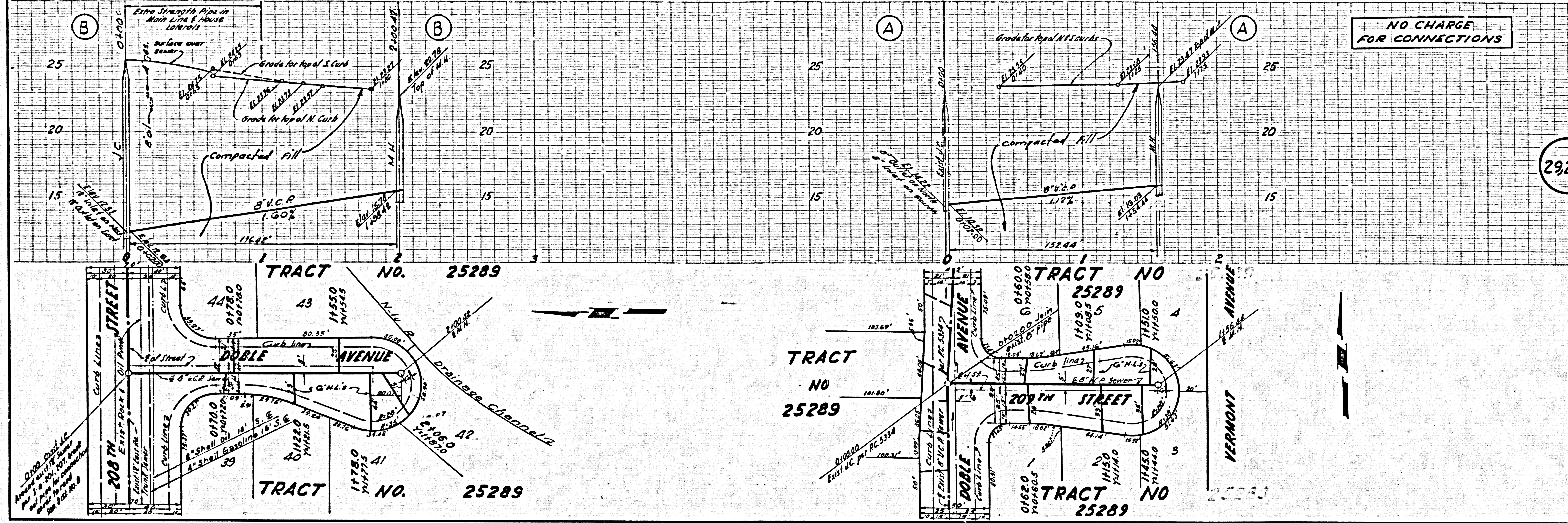
COUNTY OF LOS ANGELES, CALIFORNIA  
 APPROVED, JOHN A. LAMBIE, COUNTY ENGINEER APPROVED, C.R. COMPTON, CHIEF ENGINEER  
 CO. SAN. DIST. NO. 8  
 By: *E.E. Priddy* By: *M. J. ...*  
 2557 SANITATION ENGINEER OFFICE ENGINEER  
 CHECKED BY: *St. K. O'Neil* 5-24-60  
 OFFICE OF COUNTY ENGINEER, REG. C. E. NO. 5466  
 SUBMITTED BY: *Jack C. Lansing*  
 1704 VERDES-CENTINALE VALLEY REGIONAL ENGINEER



NO CHARGE FOR CONNECTIONS

29,280

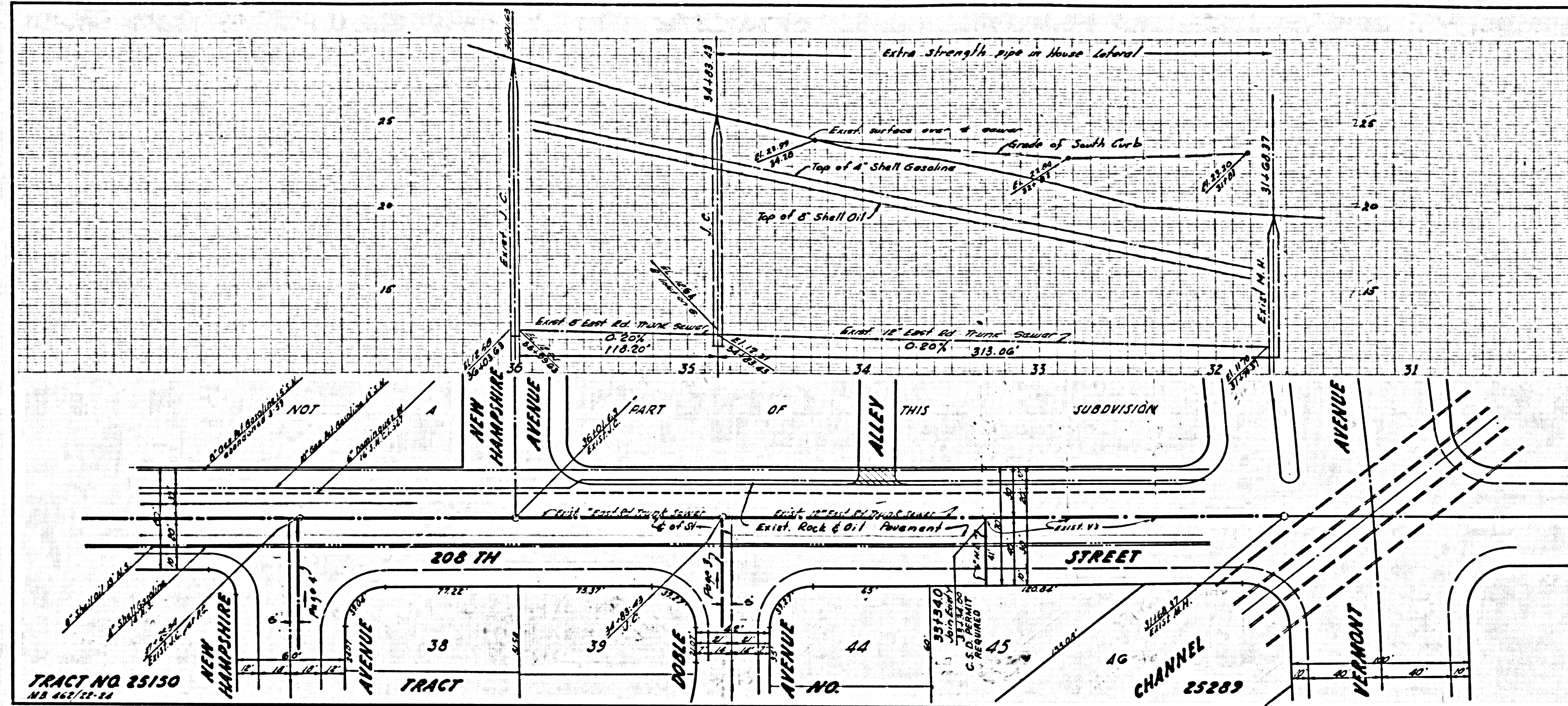
P.C. 5472 PAGE 2



M.B. 650 NO. PAGES 57/59

NO CHARGE FOR CONNECTIONS

29283



TRACT NO 25150  
MS 462/12-24

CHANNEL  
25289