

LOMITA BLDG. DIST. NO. 7

PROFILE ALIGNMENT AND GRADE OF P.C. 5473
SANITARY SEWERS PAGE 1

TO BE CONSTRUCTED IN
MAIN STREET
FROM 157TH ST. NORTH

PRIVATE CONTRACT NO. 5473

W.S. 26

1 SHEET, 2 PAGES

SCALE: HORIZ. 1"=60' VERT. 1"=6'

MARCH, 1960

PREPARED IN THE OFFICES OF
SOUTH BAY ENGINEERING CO.

(29,010)

By Henry Ferling
REG. C. E. NO. 12881

FOR LEGEND SEE PLAN NO. S-A-64

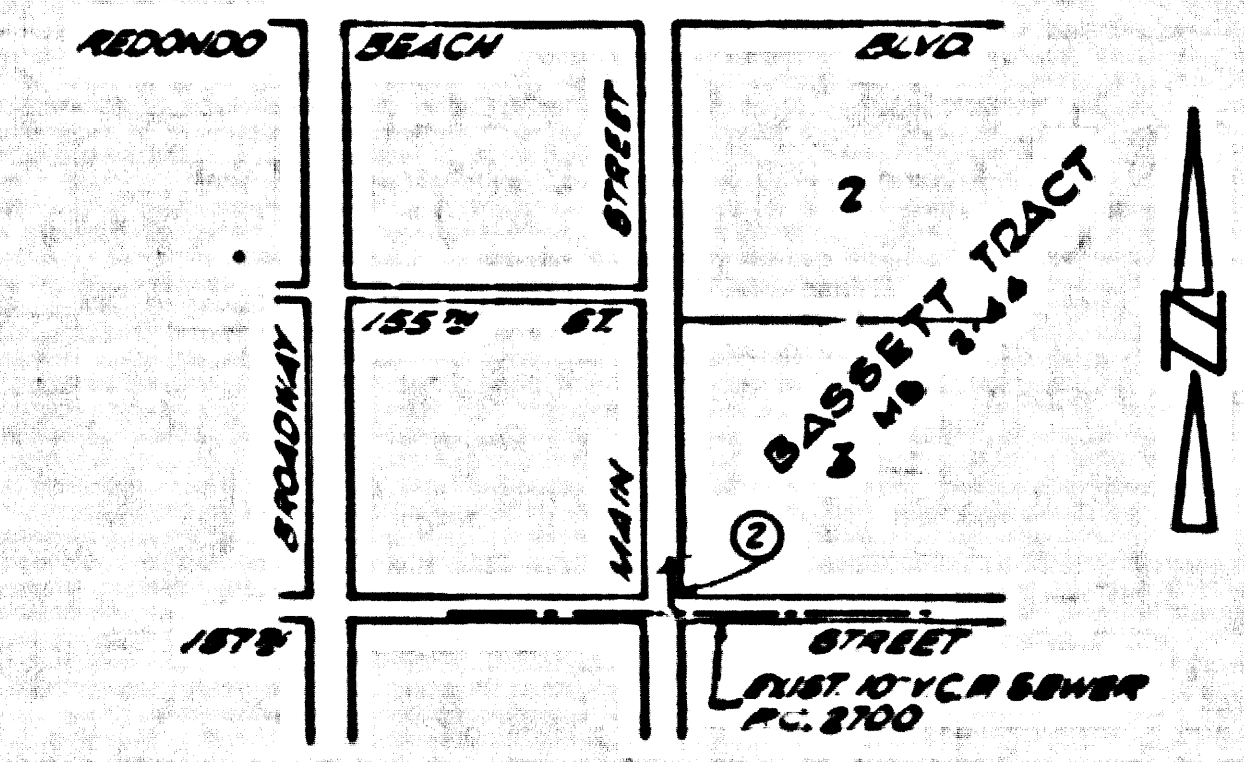
- NOTES**
- PROVIDE STAKES ON THE PROPERTY LINE OR PROPERTY LINES PRODUCED AT RIGHT ANGLES TO THE SEWER LINE AT 1' TO CENTER LINE OF EACH MANHOLE.
 - NO REPRESENTATIVE OF THE COUNTY ENGINEER WILL SURVEY OR LAYOUT ANY PORTION OF THE WORK.
 - THE OWNER OR HIS AUTHORIZED REPRESENTATIVE SHALL FURNISH THE COUNTY ENGINEER WITH GRADE SHEETS AND STATION FOR ALL HOUSE LATERALS AND V BRANCHES AND SHALL PROVIDE STAKES FOR THEM AT THEIR PROPER LOCATIONS WITH STATIONING PLAINLY MARKED. ANY CHANGE IN LOCATION SHALL BE INDICATED BY WRITING BY THE OWNER OR HIS REPRESENTATIVE.
 - NO REVISIONS SHALL BE MADE BY THESE PLANS WITHOUT THE APPROVAL OF THE COUNTY ENGINEER.
 - USE STANDARD MANHOLE FRAMES AND COVERS, S-A-117, EXCEPT AS NOTED.
 - USE STANDARD STRENGTHS PIPE EXCEPT AS NOTED.
 - USE CEMENT MORTAR, OR "MORNING GLAZE" OR "SPREAD SEAL" FOR ALL V.C.P. JOINTS PER SPEC'S, SECTIONS 817-82.
 - RESURFACE ALL TRENCH WITHIN PAVED AREA TO MEET L. A. COUNTY ROAD DEPT., OR CALIF. STATE HIGHWAY DEPT. REQUIREMENTS IN ACCORDANCE WITH PERMITS.
 - INCASE FOUR FEET OF SEWER AT POINTS OF INTERFERENCE WITH POLES, CASES III, S-O-172.
 - HOUSE LATERALS TO BE CONSTRUCTED AT 16" MIN. PER FT. TO PROPERTY LINE. 12" MIN. FOR UNPAVED AREAS.
 - ALL STRUCTURES SHALL BE BRICK SEWER STRUCTURES, S-A-194, EXCEPT AS NOTED.
 - FOR ALLOWABLE LEAKAGE TEST USE FORMULA NO. 1 SPEC'S, SEC. 84.
 - MANHOLE TOPS IN UNIMPROVED RIGHTS-OF-WAY TO BE 6" ABOVE FINISHED GRADE.
 - THE PRIVATE ENGINEER IS TO FURNISH THE NECESSARY LATERAL DEPTHS AT THE PROPERTY LINE BELOW TOP OF CURB ELEVATION FOR EACH HOUSE LATERAL ON THE GRADE SHEET.
 - SPECIFICATIONS DATED JAN. 4, 1960 APPLY TO THE CONSTRUCTION OF THIS PROJECT.

E.M.
ELEVATION OF THE 8" INLET ON THE NORTH IN U.C. AT MAIN STREET IS 157.981' NAV. M.D. 100 D.R. 1957 M.A. MAIN CENTER
ELEV. 56.27 AS BUILT

NO CHARGE FOR CONNECTIONS

[Signature]

APPROVED BY THE INDUSTRIAL WASTE DIVISION
Jim Knight, 3-24-60



INDEX MAP
SCALE: 1"=100'
PCM 5473

NOTE
CHANGES TO WHICH THIS IMPROVEMENT IS TO BE CONSTRUCTED ARE SHOWN ON PLANS AND PROFILE, GRADE POINTS FOR TOP OF CURBS, CENTER LINE OF STREETS, OR CENTER LINE OF ALLEYS ARE SHOWN BY CIRCLES ON PROFILE AT ALL POINTS BETWEEN DESIGNATED POINTS THE GRADE SHALL BE ESTABLISHED SO AS TO CONFORM TO A STRAIGHT LINE DRAWN BETWEEN SAID DESIGNATED POINTS.
ELEVATIONS ARE IN FEET ABOVE U.S.C. & G.S. MEAN SEA LEVEL UNLESS OTHERWISE NOTED.
THIS DRAWING AND THE DATA HEREON ARE HEREBY MADE A PART OF THE SPECIFICATIONS.
WORK SHALL BE CONSTRUCTED ACCORDING TO SPECIFICATIONS ON FILE IN THE OFFICE OF THE COUNTY ENGINEER AND SHALL BE PROSECUTED ONLY IN THE PRESENCE OF THE COUNTY ENGINEER.
BEFORE WORK CAN BE STARTED, THE CONTRACTOR MUST OBTAIN A PERMIT TO EXCAVATE IN COUNTY SHEETS FROM THE L. A. COUNTY ROAD DEPT., DISTRICTS 2, 3, AND PAY A FEE TO THE COUNTY ENGINEER, ROOM 204 MAIN AMERICAN BUILDING, 315 SO. BROADWAY SUFFICIENT TO COVER THE COST OF CONSTRUCTION INSPECTION AND RECORD PLANS.
APPROVAL OF THIS PLAN BY THE COUNTY OF LOS ANGELES DOES NOT CONSTITUTE A REPRESENTATION AS TO THE ACCURACY OF THE LOCATION OF OR THE EXISTENCE OR NON-EXISTENCE OF ANY UNDERGROUND UTILITY PIPE, OR STRUCTURE WITHIN THE LIMITS OF THIS PROJECT. THE NOTE APPLIES TO ALL PAGES.
IF WORK IS TO BE DONE IN A STATE HIGHWAY, A PERMIT MUST BE OBTAINED FROM THE STATE OF CALIFORNIA, DIVISION OF HIGHWAYS, 129 SOUTH SPRING STREET.

COUNTY OF LOS ANGELES, CALIFORNIA

APPROVED, JOHN A. LAMBE, COUNTY ENGINEER

APPROVED, C. R. COMPTON, CHIEF ENGINEER

BY C. E. Dwyer, ASST. SANITATION ENGINEER

BY [Signature], OFFICE ENGINEER

CHECKED BY St. Ouel, 4-5-60

OFFICE OF COUNTY ENGINEER, REG. C. E. NO. 3646

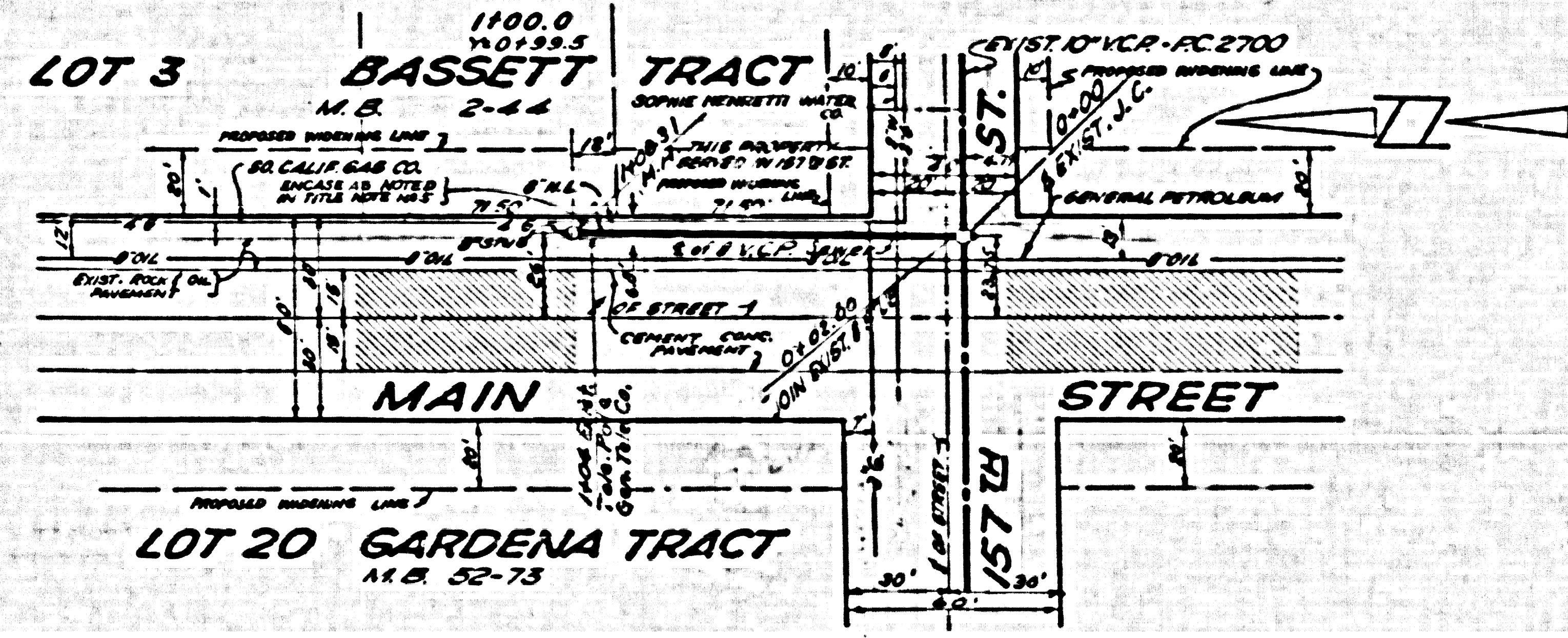
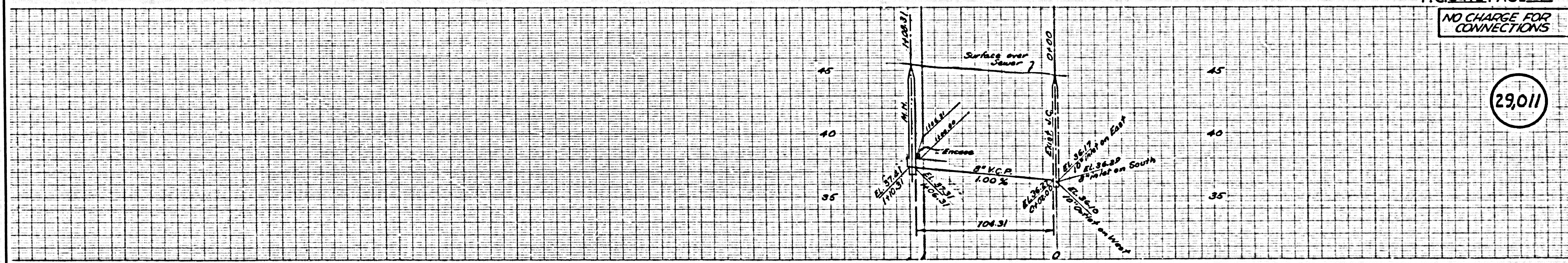
SUBMITTED BY Jack Colsoning, CIVIL ENGINEER

HT904 T2 W571 1274 M097 T2 W144 4542 6W.2

P.C. 5473 PAGE 2

NO CHARGE FOR CONNECTIONS

(29,011)



U.S.C. & G.S. MEAN SEA LEVEL FIRST SHEET NO. 1