

LAWDALE BLDG. DIST. NO. 704

PROFILE ALIGNMENT AND GRADE OF P.C. 5474
 SANITARY SEWERS PAGE 1

TO BE CONSTRUCTED IN
 156TH STREET
 PRIVATE SEWER

PRIVATE CONTRACT NO. 5474

W.S. 25
 1 SHEET : 2 PAGES

SCALE: VERT. 1" = 4'
 HORIZ. 1" = 40' FEBRUARY, 1960.

PREPARED IN THE OFFICES OF:
 BARCLAY-PEARSON CO., INC.

By: Edward L. Larson
 REG. C. E. NO. 2783

FOR LEGEND SEE PLAN NO. S-A-64

29432

- NOTES:
- PROVIDE STAKES ON THE PROPERTY LINE OR PROPERTY LINES PRODUCED AT RIGHT ANGLES TO THE SEWER LINE AT THE CENTER LINE OF EACH MANHOLE.
 - NO REPRESENTATIVE OF THE CITY ENGINEER WILL SURVEY OR LAY OUT ANY PORTION OF THE WORK.
 - THE OWNER OR HIS AUTHORIZED REPRESENTATIVE SHALL FURNISH THE CITY ENGINEER WITH GRADE SHEETS AND STATIONING FOR ALL HOUSE LATERALS AND Y BRANCHES AND SHALL PROVIDE STAKES FOR THEM AT THEIR PROPER LOCATIONS WITH STATIONING PLAINLY MARKED. ANY CHANGE IN LOCATION SHALL BE REQUESTED IN WRITING BY THE OWNER OR HIS REPRESENTATIVE.
 - THE PRIVATE ENGINEER SHALL FURNISH THE HOUSE LATERAL DEPTH AT THE PROPERTY LINE BELOW THE TOP OF CURB ELEVATION FOR EACH HOUSE LATERAL ON THE GRADE SHEET.
 - NO REVISIONS SHALL BE MADE IN THESE PLANS WITHOUT THE APPROVAL OF THE CITY ENGINEER.
 - USE STANDARD MANHOLE FRAMES AND COVERS, S-117, COVER TO ROAD SEWER.
 - USE STANDARD STRENGTH PIPE (SEE SPEC. AS NOTED).
 - USE CEMENT MORTAR OR "WEDGE-LOCK" OR "SPEED-SEAL" FOR ALL V.C.P. JOINTS PER SPEC. SECS. 16 & 18.
 - RESURFACE ALL TRENCH WITHIN PAVED AREA TO MEET CITY ROAD DEPT. OR CALIF. STATE HIGHWAY REQUIREMENTS IN ACCORDANCE WITH PERMITS.
 - ENCASE FOUR FEET OF SEWER AT POINTS OF INTERFERENCE WITH POLES, CASE III, S-112.
 - HOUSE LATERALS TO BE CONSTRUCTED WITH SLOPES AT MINIMUM 1/8" PER FOOT BELOW CURB GRADE EXCEPT AS NOTED.
 - ALL STRUCTURES SHALL BE BRICK SEWER STRUCTURES, S-104, EXCEPT AS NOTED.
 - FOR ALLOWABLE LEAKAGE TEST USE FORMULA NO. 1, SPEC. SEC. 54.
 - MANHOLE TOPS IN UNIMPROVED RIGHTS-OF-WAY TO BE SIX INCHES ABOVE FINISHED GRADE.
 - THE CONTRACTOR SHALL NOTIFY THE CONSTRUCTION & STORM DRAIN DIVISION BY TELEPHONE, MADISON 5-417, EXT. 143, AT LEAST TWENTY-FOUR HOURS BEFORE STARTING ANY WORK UNDER THIS CONTRACT.
 - STANDARD SPECIFICATIONS DATED 10/1/1950 APPLY TO THE CONSTRUCTION OF THIS PROJECT.
 - ALL THE LOCATIONS SHOWN FOR EXISTING SUBSTRUCTURES HAVE BEEN TAKEN FROM RECORD AND THEIR CORRECTNESS AND COMPLETENESS IS IN NO MANNER GUARANTEED. IT SHALL BE THE CONTRACTOR'S RESPONSIBILITY ALONE TO DETERMINE THE LOCATION OF ALL UNDERGROUND LINES AT EVERY POINT, WHETHER SHOWN HEREON OR NOT, AND PROTECT THEM FROM DAMAGE. THE CONTRACTOR SHALL BEAR THE TOTAL EXPENSE OF REPAIR TO ANY LINE DAMAGED BY ANY OPERATION IN CONNECTION WITH THE PRESENTATION OF THIS WORK.

NOTES:

GRADES TO WHICH THIS IMPROVEMENT IS TO BE CONSTRUCTED ARE SHOWN ON PLANS AND PROFILES. GRADE POINTS FOR TOP OF CURBS, CENTER LINE OF STREETS, OR CENTER LINE OF ALLEYS ARE SHOWN BY CIRCLE. ON PROFILES, AT ALL POINTS BETWEEN DESIGNATED POINTS THE GRADE SHALL BE ESTABLISHED SO AS TO CONFORM TO A STRAIGHT LINE DRAWN BETWEEN SAID DESIGNATED POINTS.

ELEVATIONS ARE IN FEET ABOVE U.S.C. & G.S. SEA LEVEL DATUM OF 1929.

THIS DRAWING AND THE DATA HEREON ARE HEREBY MADE A PART OF THE SPECIFICATIONS.

WORK SHALL BE CONSTRUCTED ACCORDING TO SPECIFICATIONS ON FILE IN THE OFFICE OF THE CITY ENGINEER AND SHALL BE PROSECUTED ONLY IN THE PRESENCE OF THE CITY ENGINEER.

BEFORE WORK CAN BE STARTED THE CONTRACTOR MUST OBTAIN A PERMIT TO EXCAVATE IN CITY STREETS FROM THE CITY ROAD DEPT. DISTRICT OFFICE NO. 3 AND PAY A FEE TO THE CITY ENGINEER.

IF WORK IS TO BE DONE IN A STATE HIGHWAY, A PERMIT MUST BE OBTAINED FROM THE STATE OF CALIFORNIA, DIVISION OF HIGHWAYS, 126 SOUTH SHAWNEE STREET.

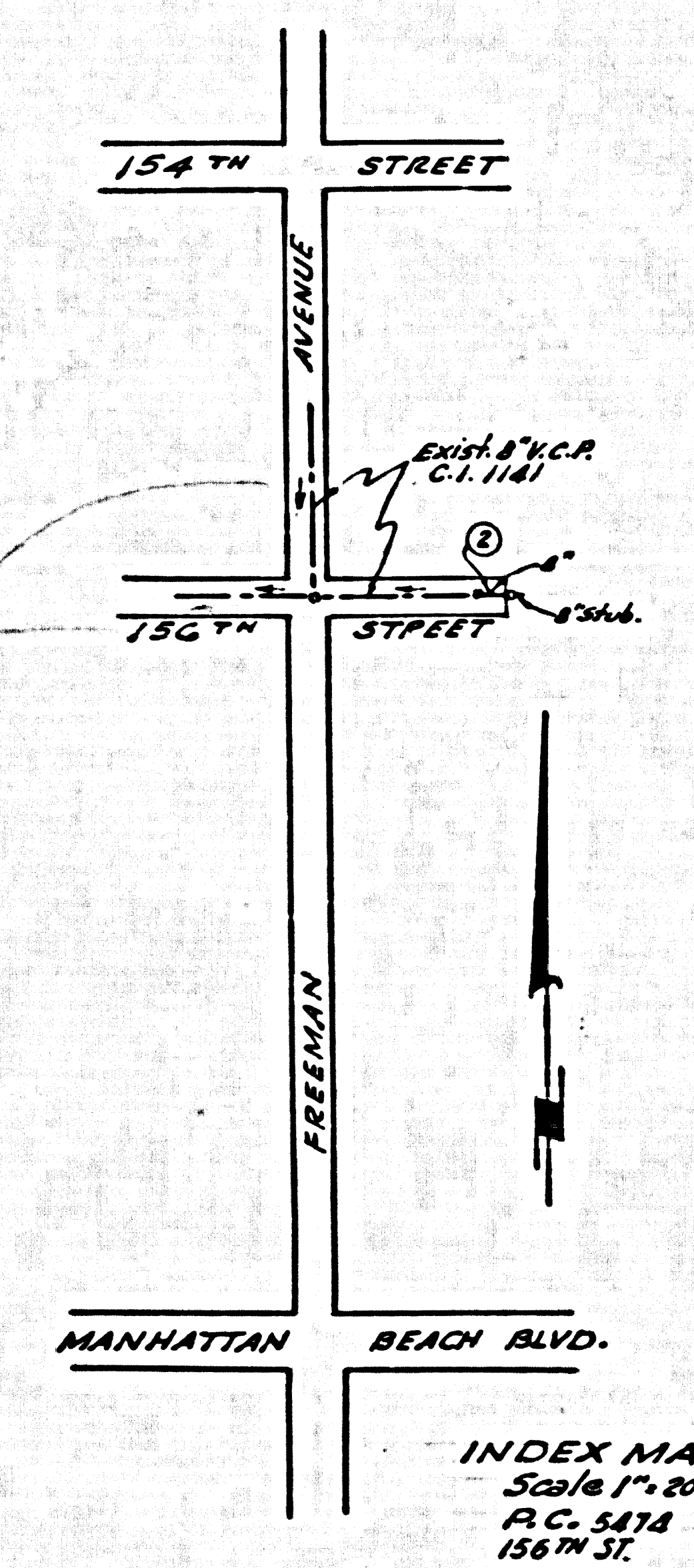
CITY OF LAWDALE, CALIFORNIA

APPROVED, JOHN A. LAMBE, CITY ENGINEER APPROVED, C.E. CHAMPTON, CHIEF ENGINEER
 DIST. SAN. DIST. NO. 3

BY: L.H. Hughes, SANITATION ENGINEER BY: L. Posthumus, OFFICE ENGINEER

CHECKED BY: J.K. Drake, 4-12-60
 OFFICE OF CITY ENGINEER, REG. C. E. NO. 2406

SUBMITTED: Jack C. Jensen, Regional Engineer



B.M. 51103 Elev. 48.054
 County Survey Mon. at intersection
 of E of Manhattan Beach Blvd. and
 Prairie Avenue.

T. B. M.
 Top of curb, North side 156th Street
 at West property line of school.
 Elev. 52.81.

NO CHARGE
 FOR CONNECTIONS
 Arthur B. Reedy

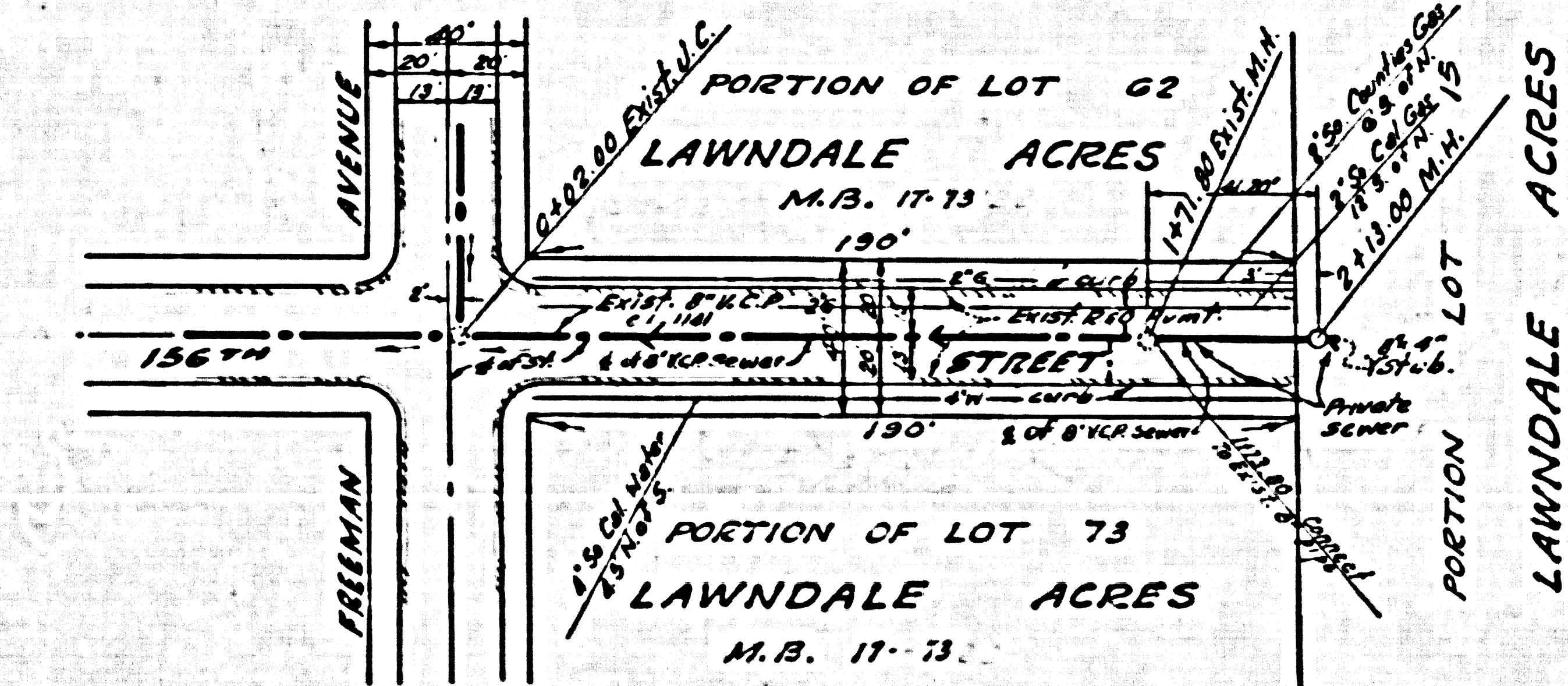
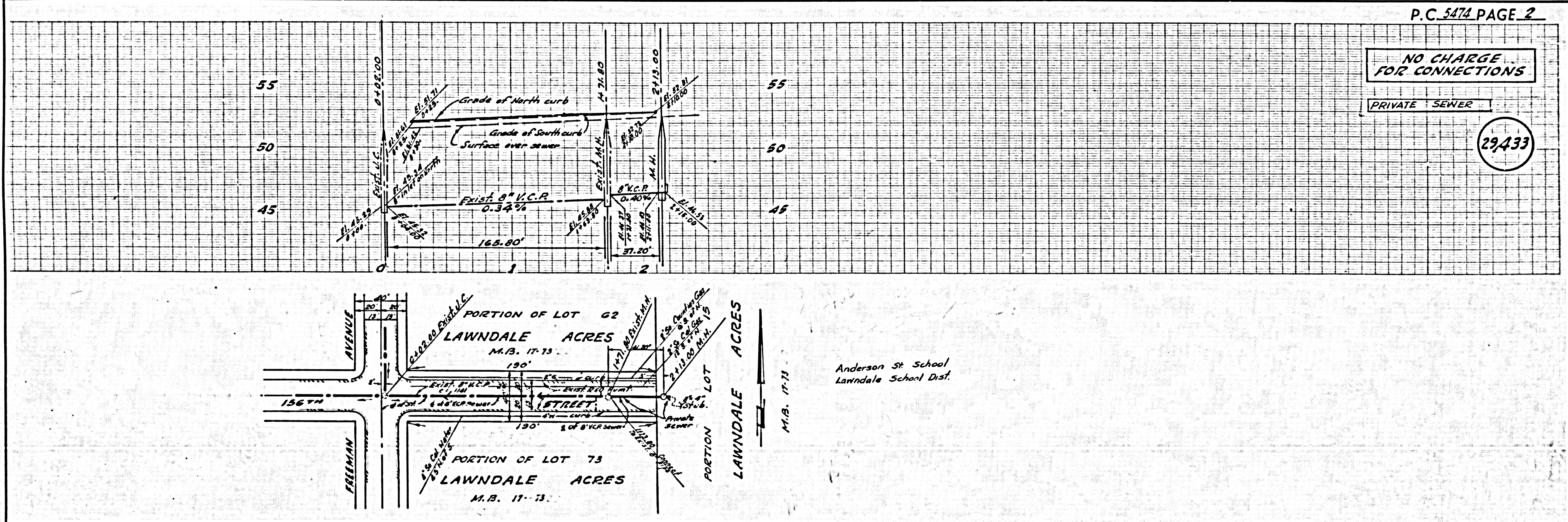
INDEX MAP
 Scale 1" = 200'
 P.C. 5474
 156TH ST.

P.C. 5474 PAGE 2

NO CHARGE
 FOR CONNECTIONS

PRIVATE SEWER

29433



Anderson St School
 Lawndale School Dist.

M.B. 17-13