

BENCH MARK S.G. 1272
 L & B mail N.E. Cor. base of wip way Signal
 ±5' So of S.P. Ry ±15' E of Nogales Ave.
 (OTTERBEIN 1955) ELEV 457.095

PUENTE BLDG. DIST. NO. 2

PROFILE ALIGNMENT AND GRADE OF P.C. 5486
 SANITARY SEWERS PAGE 1
 TO BE CONSTRUCTED IN U.N. 0353.23

TRACT NO. 25190
 PRIVATE CONTRACT NO. 5486

W.S. 38
 5 SHEETS; 9 PAGES
 SCALE: VERT. 1"=4' HORIZ. 1"=40'
 MARCH, 1960
 PREPARED IN THE OFFICES OF
 L. FREDERICK PACK AND ASSOCIATES

29,305

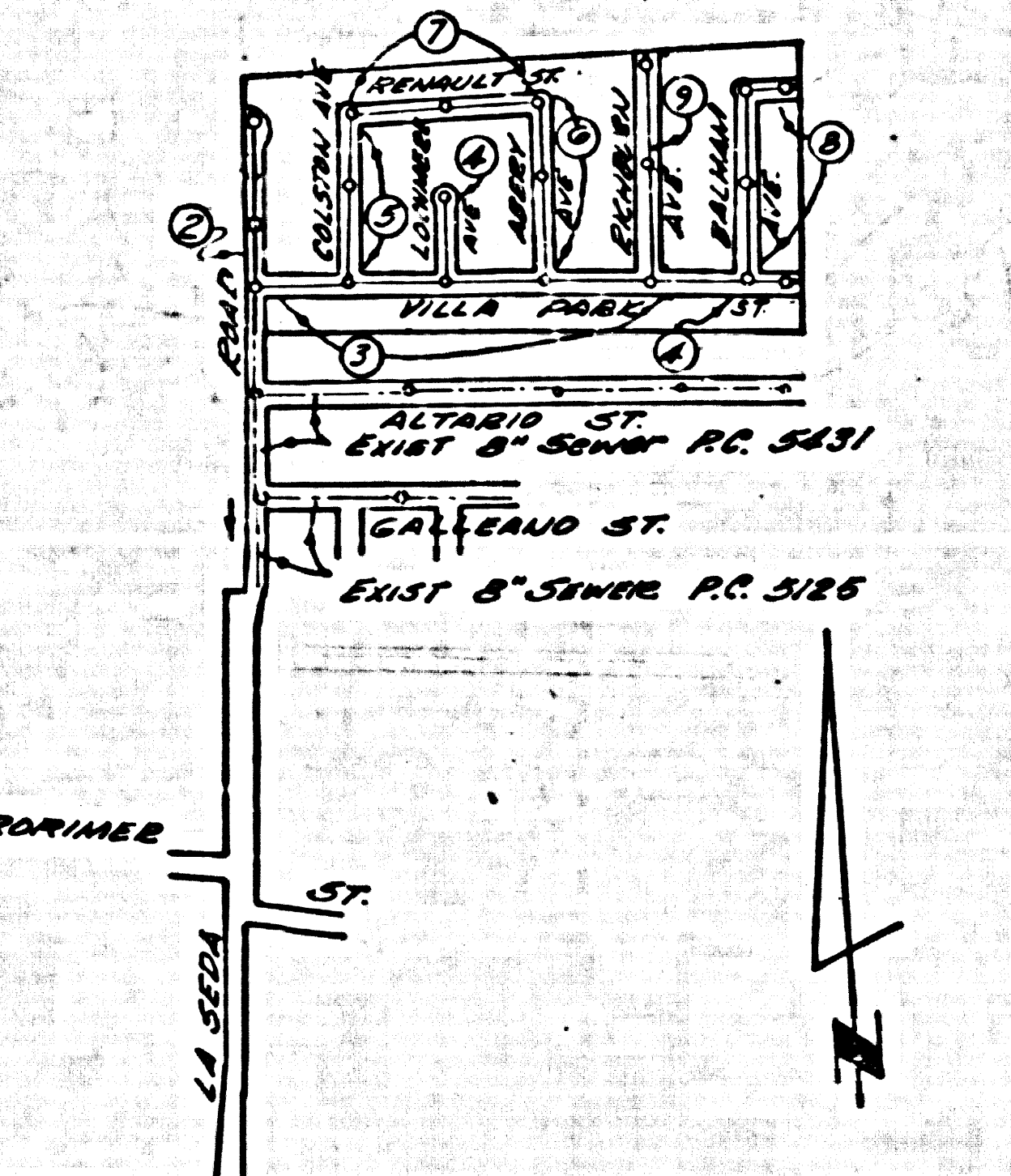
By: L. Frederick Pack
 REG. C. E. NO. 7468
 FOR LEGEND SEE PLAN NO. S-A-64

NOTE:
 1. POINTS TO WHICH THIS IMPROVEMENT IS TO BE CONSTRUCTED ARE SHOWN ON PLANS AND PROFILES. GRADE POINTS FOR TOPOGRAPHY, CURVES, CENTER LINE OF STREETS, OR CENTER LINE OF ALLEYS ARE SHOWN BY CIRCLES ON PROFILES AT ALL POINTS BETWEEN DESIGNATED POINTS. THE GRADE SHALL BE ESTABLISHED SO AS TO CONFORM TO A STRAIGHT LINE DRAWN BETWEEN SAID DESIGNATED POINTS.
 2. ELEVATIONS ARE IN FEET ABOVE U.S.C. & G.S. MEAN LEVEL, DATUM OF 1929.
 3. THIS DRAWING AND THE DATA HEREON ARE HEREBY MADE A PART OF THE SPECIFICATIONS.
 4. WORK SHALL BE CONSTRUCTED ACCORDING TO SPECIFICATIONS ON FILE IN THE OFFICE OF THE COUNTY ENGINEER AND SHALL BE PROSECUTED ONLY IN THE PRESENCE OF THE COUNTY ENGINEER.
 5. BEFORE WORK CAN BE STARTED THE CONTRACTOR MUST OBTAIN A PERMIT TO EXCAVATE IN COUNTY STREETS FROM THE L.A. COUNTY ROAD DEPT., DISTRICT OFFICE NO. 1 AND PAY A FEE OF 75¢. THE COUNTY ENGINEER ROOM IS 324 P.M. AMERICAN BUILDING, 251 SO. BROADWAY, SUFFICIENT TO COVER THE COST OF CONSTRUCTION INSPECTION AND RECORD PLANS.
 6. APPROVAL OF THIS PLAN BY THE COUNTY OF LOS ANGELES DOES NOT CONSTITUTE A REPRESENTATION AS TO THE ACCURACY OF THE LOCATION OR THE EXISTENCE OR NON-EXISTENCE OF ANY UNDERGROUND UTILITY PIPE, OR STRUCTURE WITHIN THE LIMITS OF THIS PROJECT. THIS NOTE APPLIES TO ALL PAGES.
 7. IF WORK IS TO BE DONE IN A STATE HIGHWAY, A PERMIT MUST BE OBTAINED FROM THE STATE OF CALIFORNIA, DIVISION OF HIGHWAYS, 120 SOUTH BRINK STREET.

COUNTY OF LOS ANGELES, CALIFORNIA

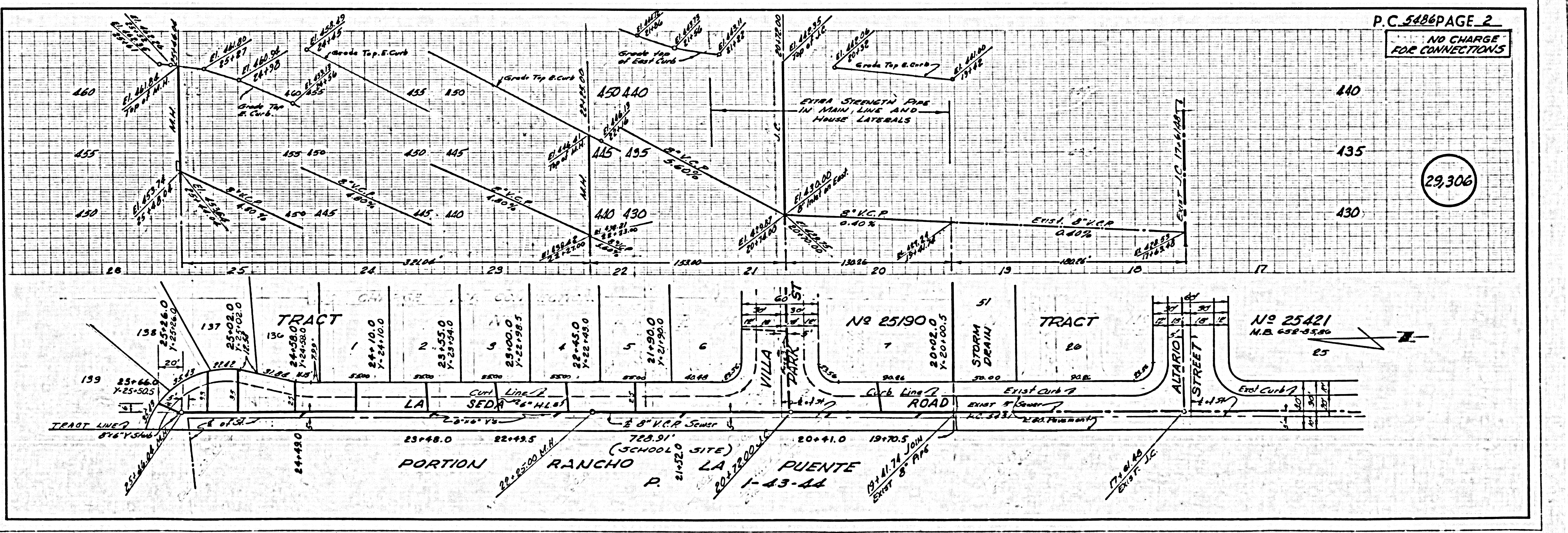
APPROVED, JOHN A. LAMBIE, COUNTY ENGINEER
 APPROVED, C.E. Conroy, ENGINEER
 BY: C.E. Conroy, COUNTY SANITATION ENGINEER
 BY: L.F. Pack, OFFICE ENGINEER
 CHECKED BY: S.K. Under, 4-15-60
 OFFICE OF COUNTY ENGINEER, REG. C. E. NO. 3406

SUBMITTED W.C. Peindler
 SAN DIMAS REGIONAL ENGINEER



INDEX MAP
 TRACT NO. 25190
 P.C. 5486
 SCALE 1"=600'

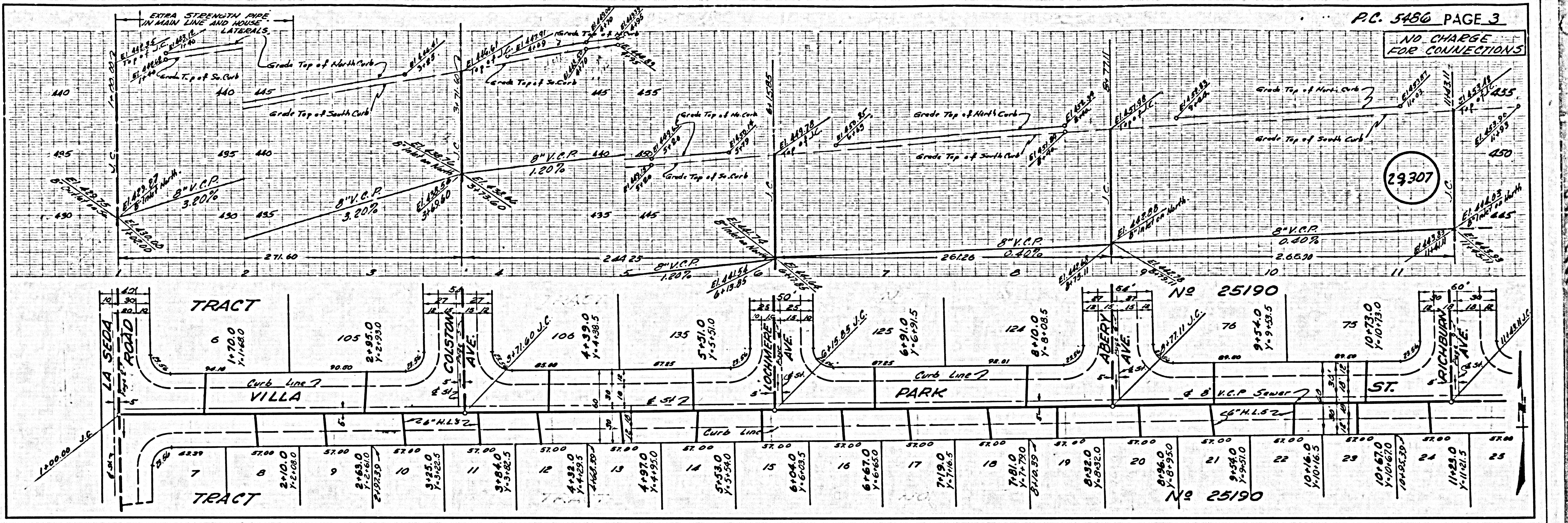
NO CHARGE
 FOR CONNECTIONS
 71 79° 22' 30" 4-14-60



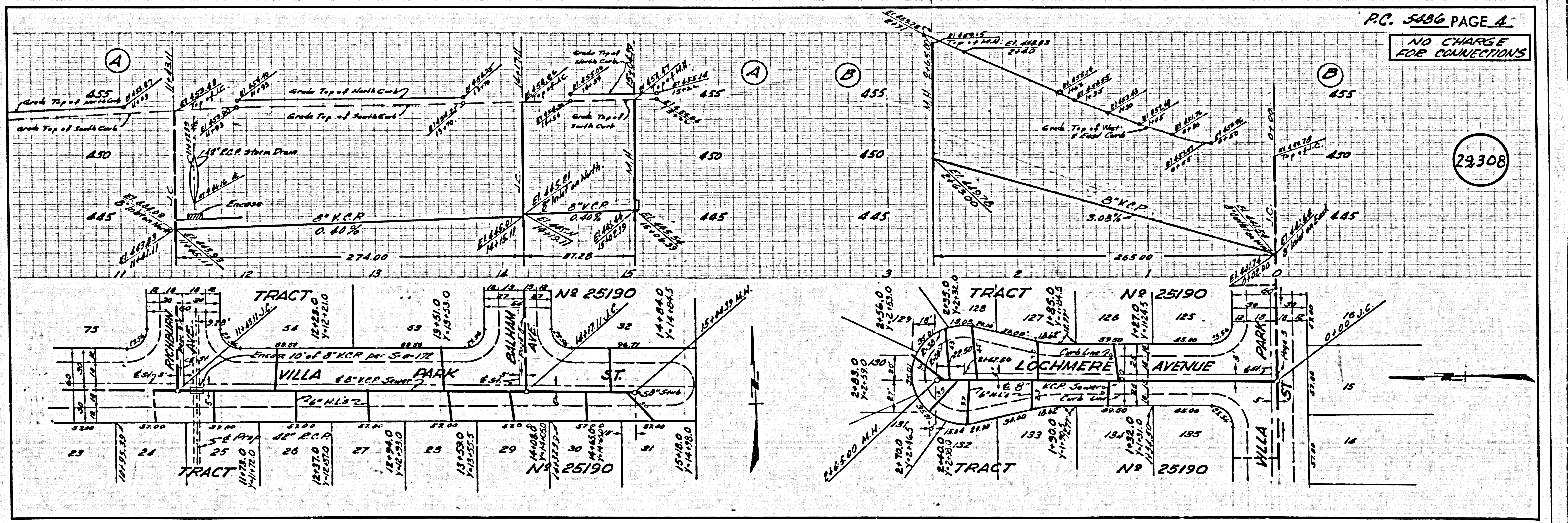
P.C. 5486 PAGE 2
 NO CHARGE
 FOR CONNECTIONS

29,306

NO CHARGE FOR CONNECTIONS

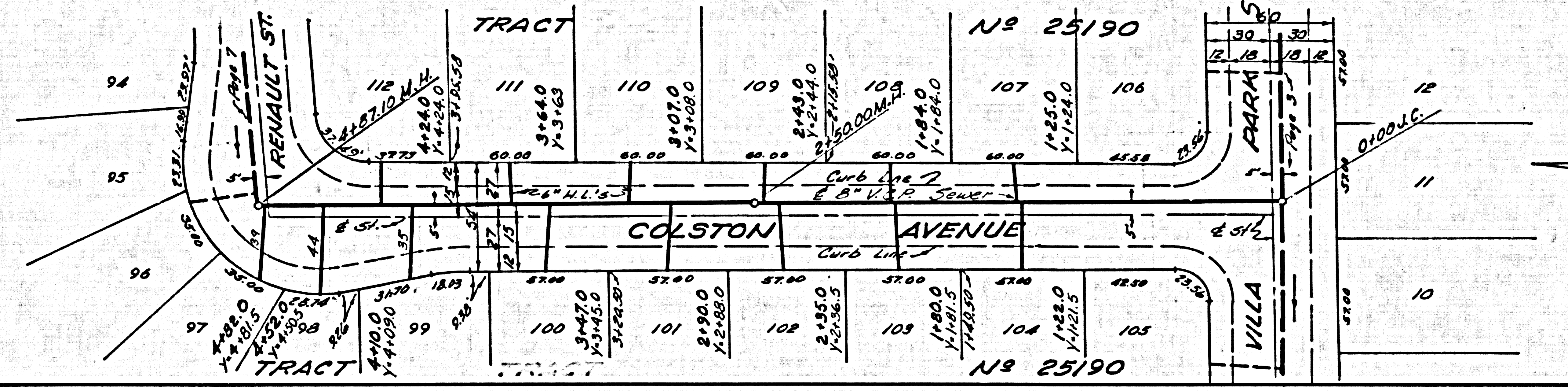
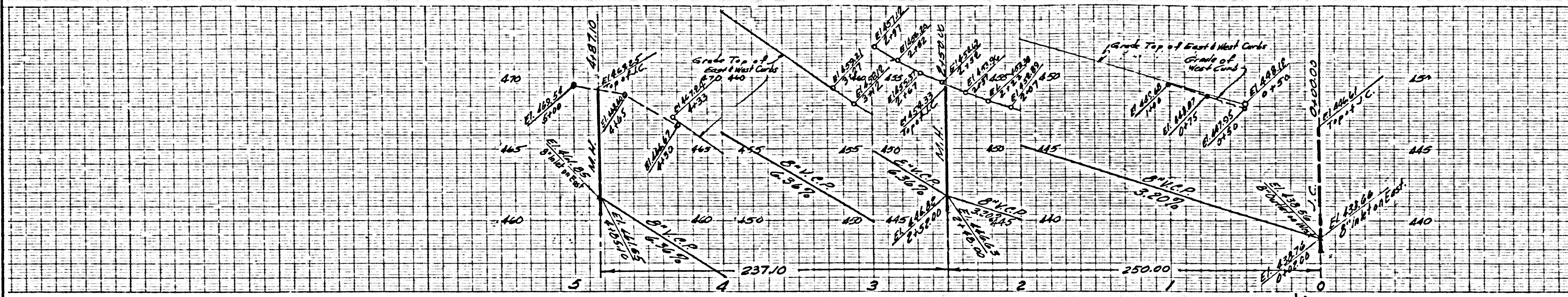


NO CHARGE FOR CONNECTIONS



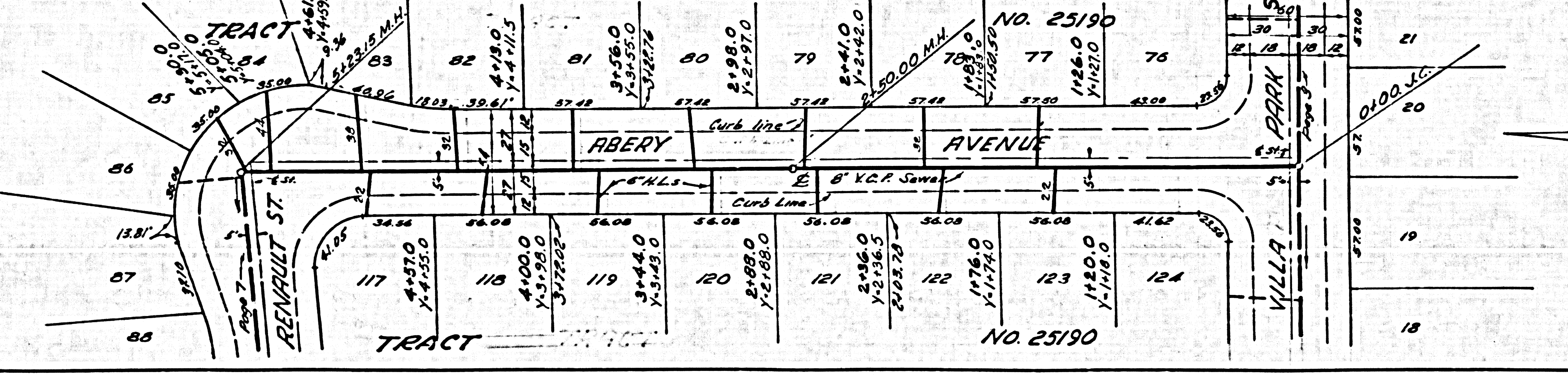
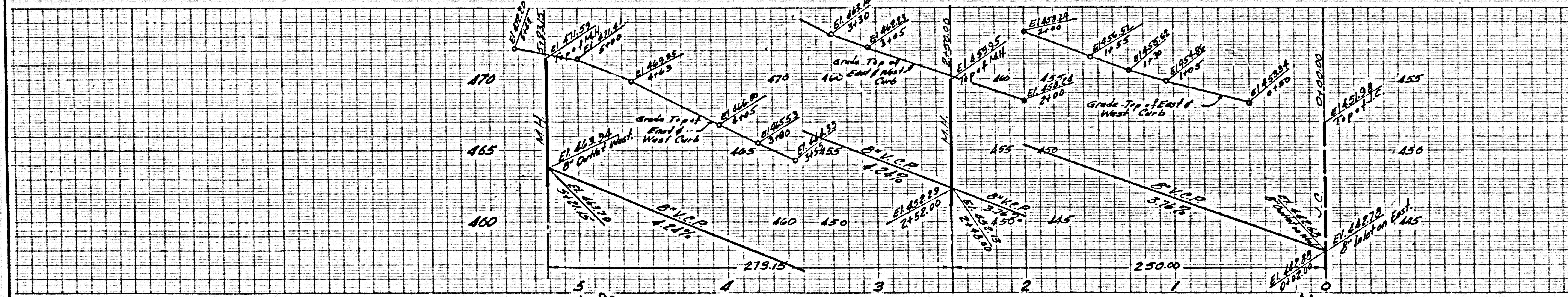
NO CHARGE FOR CONNECTIONS

29,309

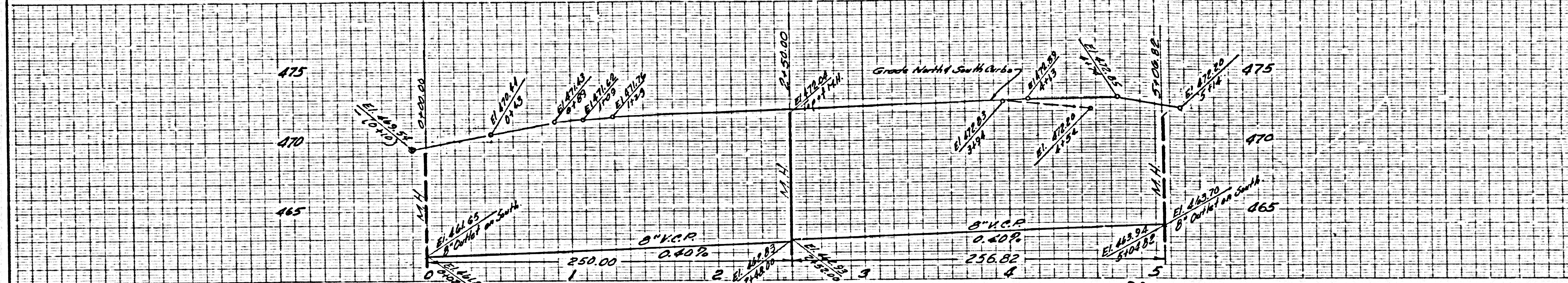


NO CHARGE FOR CONNECTIONS

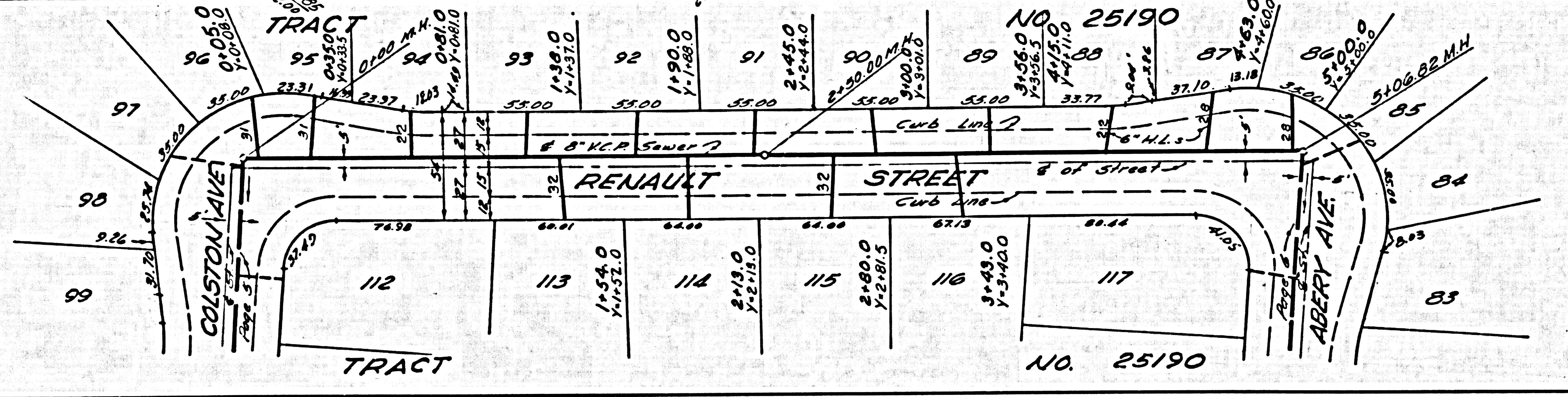
29,310



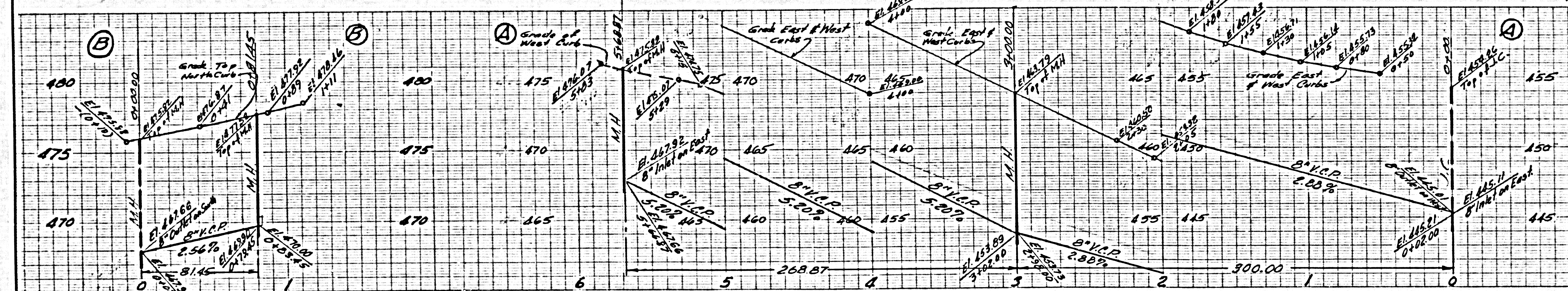
NO CHARGE FOR CONNECTIONS



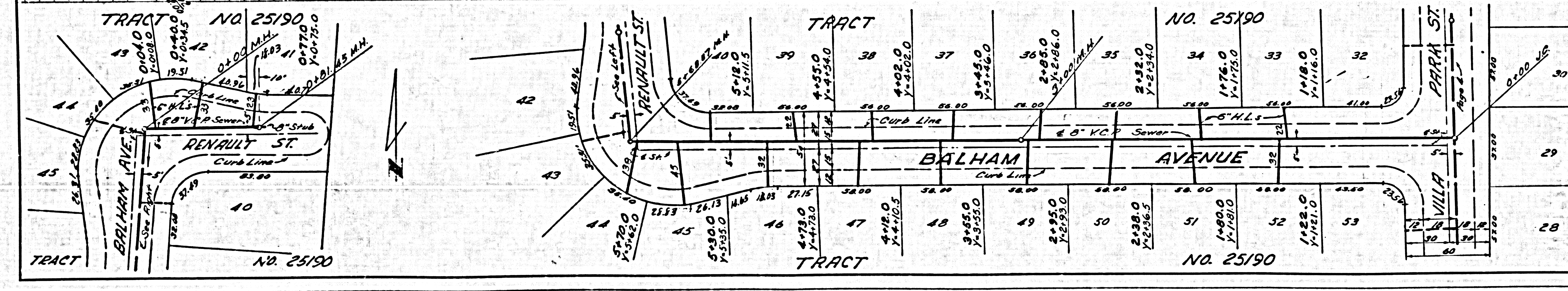
29,311



NO CHARGE FOR CONNECTIONS



29,312

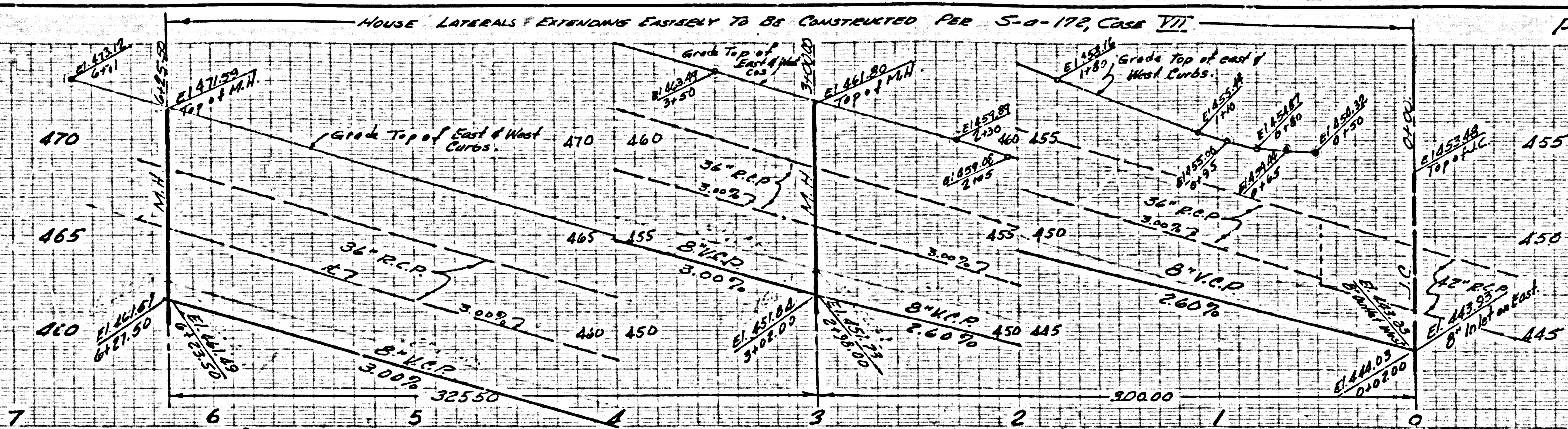


HOUSE LATERALS EXTENDING EASTELY TO BE CONSTRUCTED PER S-8-172, CASE VII

P.C. 5486 PAGE 2

NO CHARGE FOR COLLECTIONS

29,313



TRACT	NO	AREA	PERCENTAGE	NO	AREA	PERCENTAGE
64	6210	1-6-190		54	4350	
65	6170	1-6-165		55	5800	1-1-175
66	5780	1-5-170		56	5800	1-1-175
67	5720	1-5-125		57	5800	1-2-160
68	4780	1-4-125		58	5800	1-2-160
69	4050	1-4-105		59	5800	1-2-160
70	3780	1-3-140		60	5800	1-2-160
71	2990	1-2-185		61	5800	1-2-160
72	2990	1-2-185		62	5800	1-2-160
73	1750	1-1-140		63	5800	1-2-160
74	1750	1-1-140		64	5800	1-2-160
75	4350	1-1-150		65	5800	1-2-160

PAGE