

ARTESIA BLDG. DIST. NO. 4.09

PROFILE ALIGNMENT AND GRADE OF P.C. 5487
 SANITARY SEWERS PAGE 1
 TO BE CONSTRUCTED IN

R/W. N/O ASHWORTH ST.
 PRIVATE CONTRACT NO. 5487

W.S. 33
 1 SHEET, 2 PAGES

SCALE: VERT. 1" = 4' HORIZ. 1" = 40'

MARCH, 1960
 PREPARED IN THE OFFICES OF
 GLEN ROOD
 CONSULTING ENGINEER
 1200 S. MAIN ST., ARTESIA, CALIF.

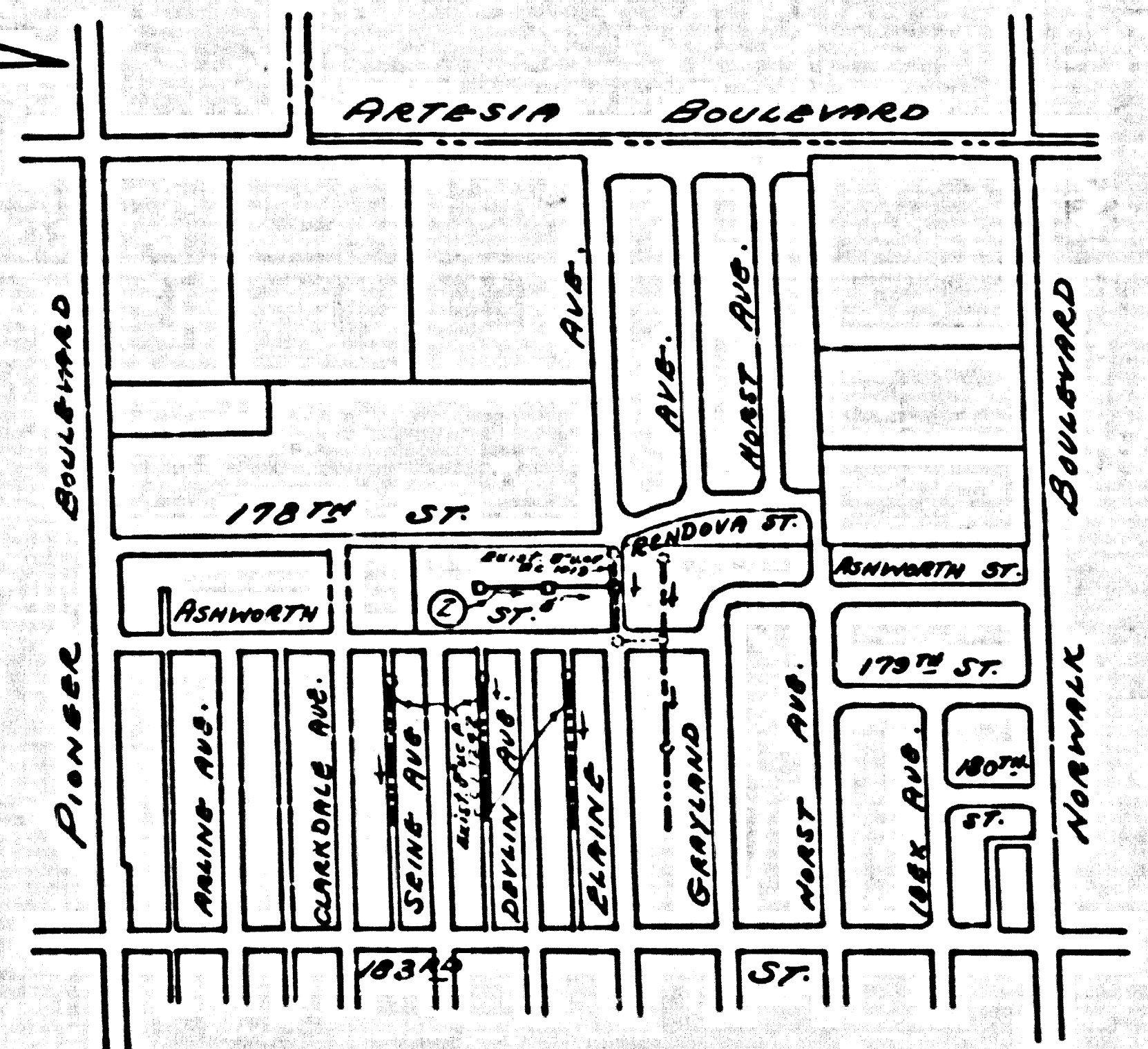
30284

REG. C. E. NO. 2293
 FOR LEGEND SEE PLAN NO. S-A-44

NOTE: GRADES TO WHICH THIS IMPROVEMENT IS TO BE CONSTRUCTED ARE SHOWN ON PLANS AND PROFILE GRADE POINTS FOR TOP OF CURBS, CENTER LINE OF STREETS, OR CENTER LINE OF ALLEYS ARE SHOWN BY CIRCLES ON PROFILES AT ALL POINTS BETWEEN DESIGNATED POINTS THE GRADE SHALL BE ESTABLISHED SO AS TO CONFORM TO A STRAIGHT LINE DRAWN BETWEEN SAID DESIGNATED POINTS.
 ELEVATIONS ARE IN FEET ABOVE U.S.C. & G.S. SEA LEVEL, DATUM OF 1929.
 THIS DRAWING AND THE DATA HEREON ARE HEREBY MADE A PART OF THE SPECIFICATIONS.
 WORK SHALL BE CONSTRUCTED ACCORDING TO SPECIFICATIONS ON FILE IN THE OFFICE OF THE CITY ENGINEER AND SHALL BE PROSECUTED ONLY IN THE PRESENCE OF THE COUNTY ENGINEER.
 BEFORE WORK CAN BE STARTED, THE CONTRACTOR MUST OBTAIN A PERMIT TO EXCAVATE IN CITY STREETS FROM THE L.A. COUNTY PUBLIC WORKS DEPARTMENT AND HAVE A DEPOSIT WITH THE CITY OF ARTESIA IN THE AMOUNT OF \$1000.00 TO COVER THE COST OF CONSTRUCTION INSPECTION AND RECORD PLANS.
 APPROVAL OF THIS PLAN BY THE CITY OF ARTESIA DOES NOT CONSTITUTE A REPRESENTATION AS TO THE ACCURACY OF THE LOCATION OR OF THE EXISTENCE OR NON-EXISTENCE OF ANY UNDERGROUND UTILITY PIPE, OR STRUCTURE WITHIN THE LIMITS OF THIS PROJECT. THIS NOTE APPLIES TO ALL PAGES.
 IF WORK IS TO BE DONE IN A STATE HIGHWAY, A PERMIT MUST BE OBTAINED FROM THE STATE OF CALIFORNIA, DIVISION OF HIGHWAYS, 126 SOUTH BRIDGE STREET.

- NOTES:
1. PROVIDE STAKES ON THE PROPERTY LINE OR PROPERTY LINES PRODUCED AT RIGHT ANGLES TO THE SEWER LINE AT THE CENTER LINE OF EACH MANHOLE.
 2. NO REPRESENTATIVE OF THE CITY ENGINEER WILL SURVEY OR LAY OUT ANY PORTION OF THE WORK.
 3. THE OWNER OR HIS AUTHORIZED REPRESENTATIVE SHALL FURNISH THE CITY ENGINEER WITH GRADE SHEETS AND STATIONING FOR ALL HOUSE LATERALS AND BRANCHES AND SHALL PROVIDE STAKES FOR THEM AT THEIR PROPER LOCATIONS WITH STATIONING PLAINLY MARKED. ANY CHANGE IN LOCATION SHALL BE REQUESTED IN WRITING BY THE OWNER OR HIS REPRESENTATIVE.
 4. THE PRIVATE ENGINEER SHALL FURNISH THE HOUSE LATERAL DEPTH AT THE PROPERTY LINE BELOW THE TOP OF CURB ELEVATION FOR EACH HOUSE LATERAL ON THE GRADE SHEET.
 5. NO REVISIONS SHALL BE MADE IN THESE PLANS WITHOUT THE APPROVAL OF THE CITY ENGINEER.
 6. USE STANDARD MANHOLE FRAMES AND COVERS, S-111, EXCEPT AS NOTED. COVER TO READ "SEWER".
 7. USE STANDARD STRENGTH PIPE.
 8. USE CEMENT MORTAR OR "WEDGE-LOCK" OR "SPEED-SEAL" FOR ALL P.C.P. JOINTS PER SPEC'S, SECS. 24 & 6.
 9. RESURFACE ALL TRENCH WITHIN PAVED AREA TO MEET L.A. COUNTY ROAD DEPT. OR CALIF. STATE HIGHWAY REQUIREMENTS IN ACCORDANCE WITH PERMITS.
 10. ENCASE FOUR FEET OF SEWER AT POINTS OF INTERFERENCE WITH POLES, CASE NO. S-172.
 11. MANHOLE LATERALS TO BE CONSTRUCTED WITH INTEREST AT PROPERTY LINE FOR BELOW CURB GRADE 1000'-10'-00".
 12. ALL STRUCTURES SHALL BE BRICK SEWER STRUCTURES, S-104 EXCEPT AS NOTED.
 13. FOR ALLOWABLE LEAKAGE TEST USE FORMULA NO. 1, SPEC'S, SEC. 64.
 14. MANHOLE TOPS IN UNIMPROVED RIGHTS-OF-WAY TO BE LEVEL WITH FINISHED GRADE.
 15. THE CONTRACTOR SHALL NOTIFY THE CONSTRUCTION DIVISION BY TELEPHONE, MADISON 5-474, EXT. 8-251 AT LEAST TWENTY-FOUR HOURS BEFORE STARTING ANY WORK UNDER THIS CONTRACT.
 16. STANDARD SPECIFICATIONS DATED JANUARY 1, 1950, ON FILE IN CITY HALL, APPLY IN THE CONSTRUCTION OF THIS PROJECT.

BENCH MARK: M.K.N.314 Field Book 2146 Page 11, ELEV. 52.313
 BLAINE AVE. @ 178th ST. NW. COR. BEAR SP. IN CURB 30' N. of M.
 8" x 8" CURB PERMITS.

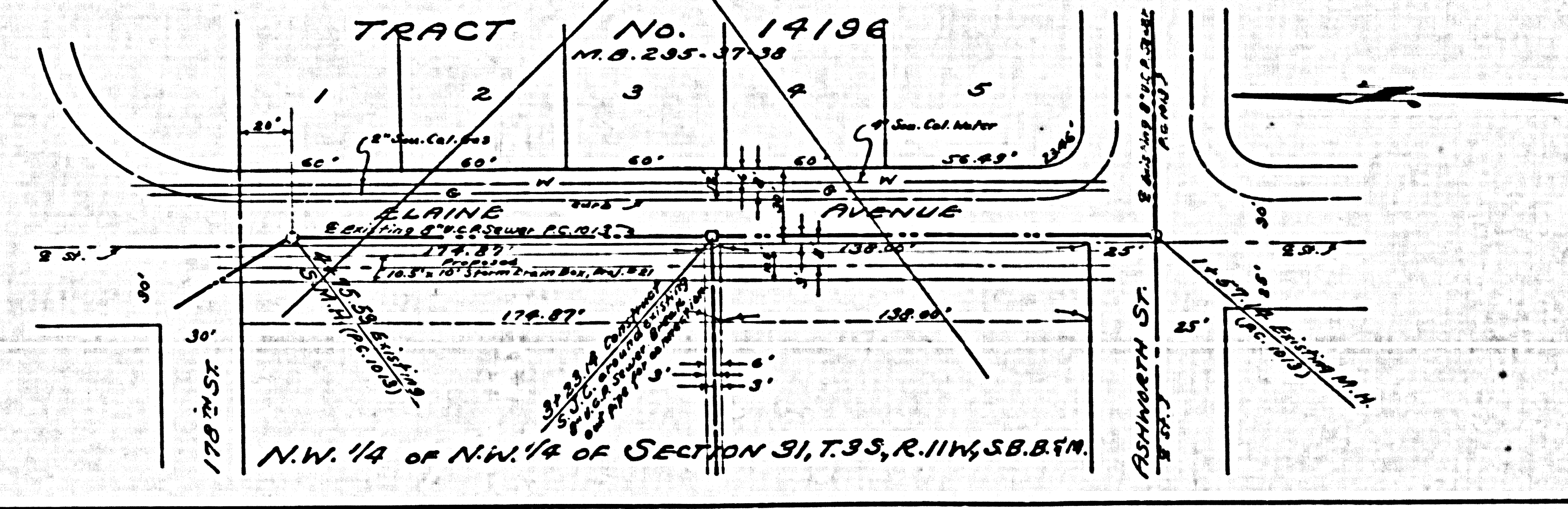
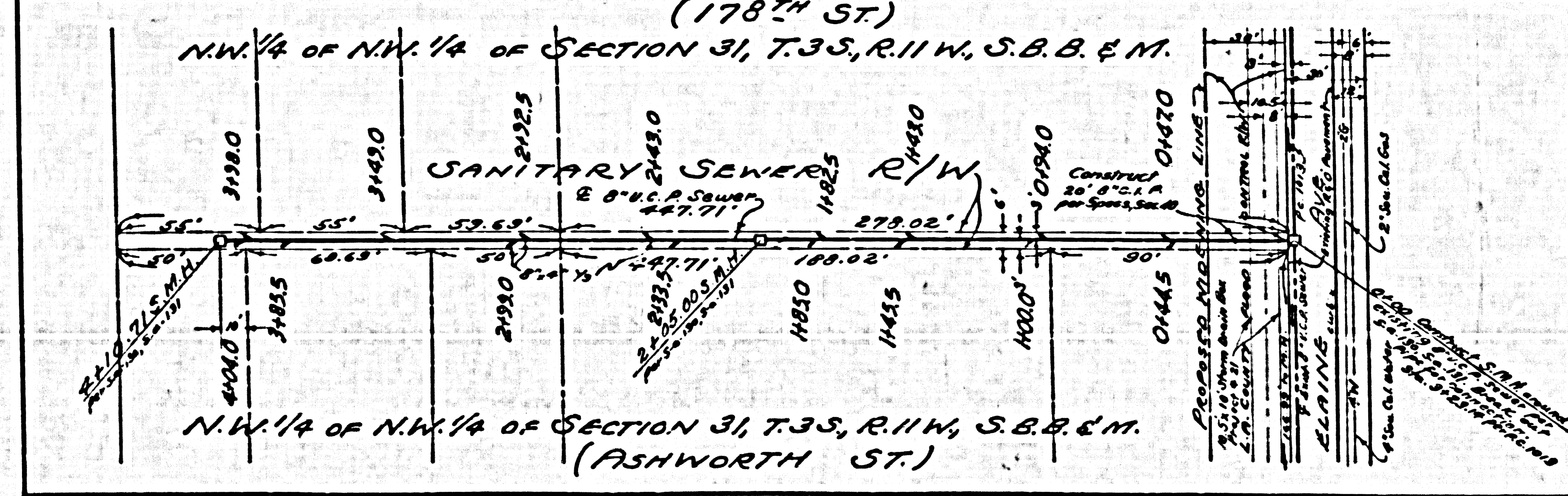
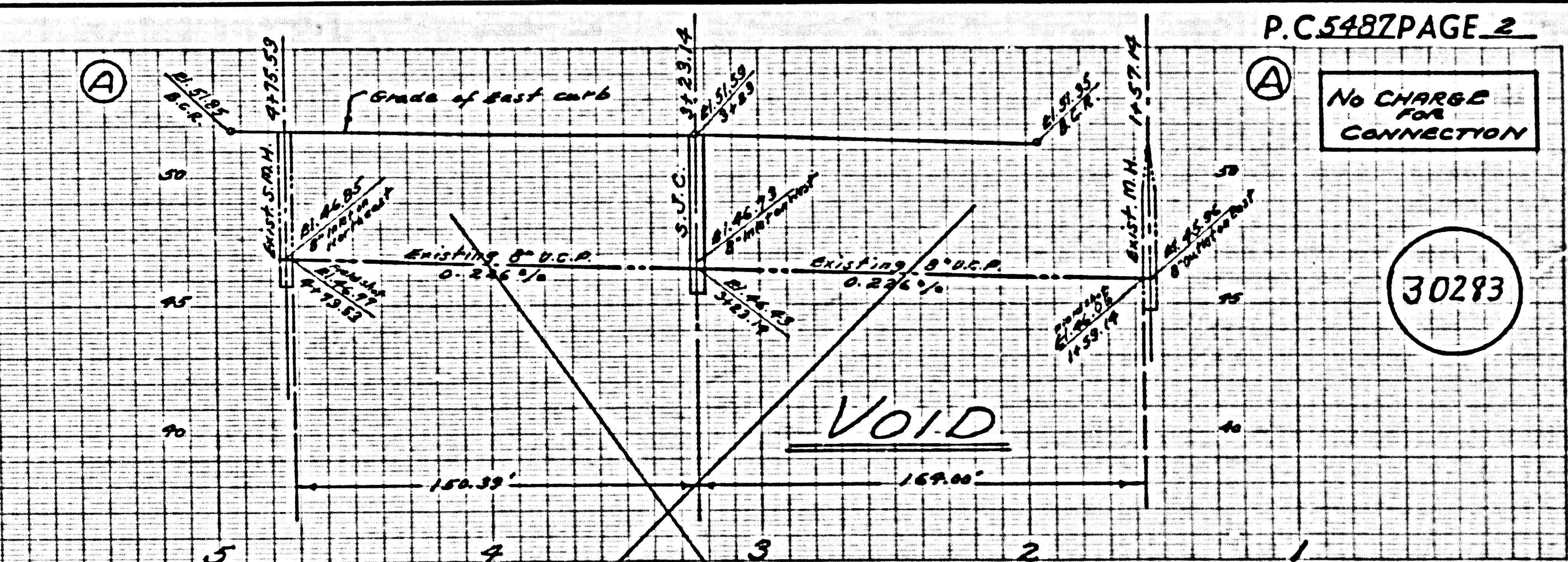
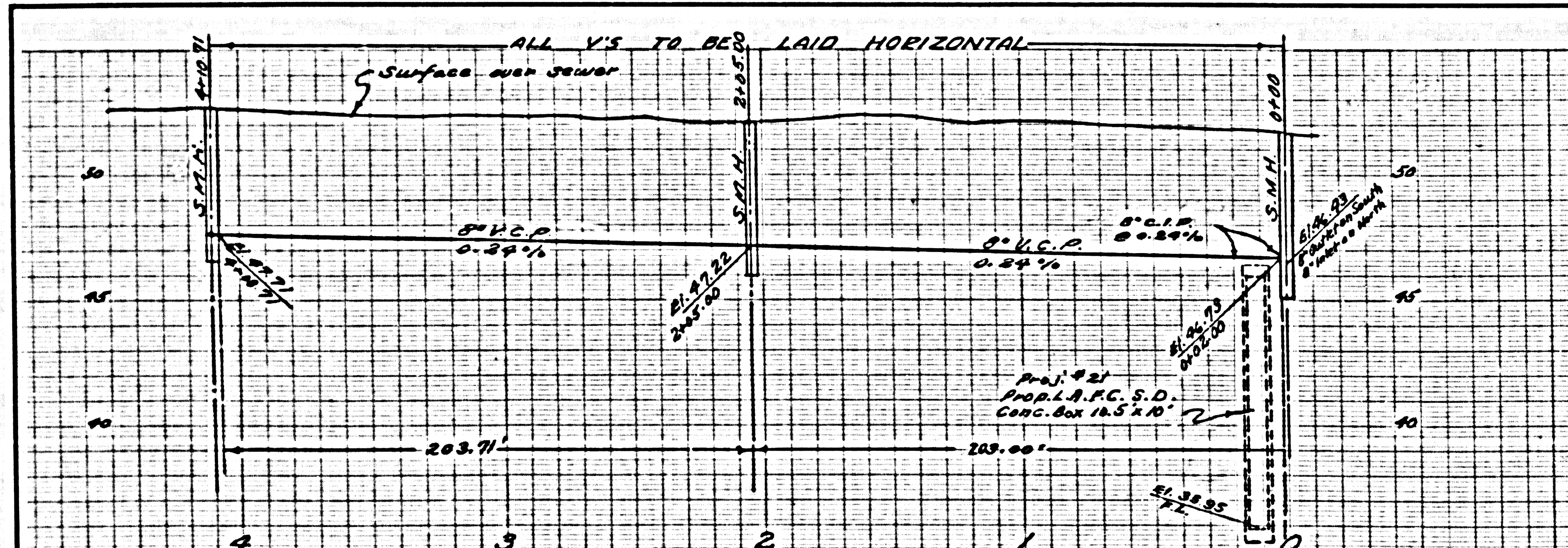


INDEX MAP
 Scale: 1" = 600'
 P.C. 5487

NO CHARGE FOR CONNECTION
 2-22-60

CITY OF ARTESIA, CALIFORNIA
 APPROVED, JOHN A. LAMBIE, CITY ENGINEER
 APPROVED, G.R. CANTRELL, CHIEF ENGINEER
 BY: E.E. Priddy, ASST. SANITATION ENGINEER
 BY: J. Cartmanson, OFFICE ENGINEER
 CHECKED BY: W. Under, 9-30-60
 OFFICE OF CITY ENGINEER, REG. C. E. NO. 3406

SUBMITTED BY: John J. Estey, 2-22-60
 415 CARLITO ROAD, REGIONAL ENGINEER, REG. C. E. NO. 3871



P.C. 5487 PAGE 2

NO CHARGE FOR CONNECTION

30283