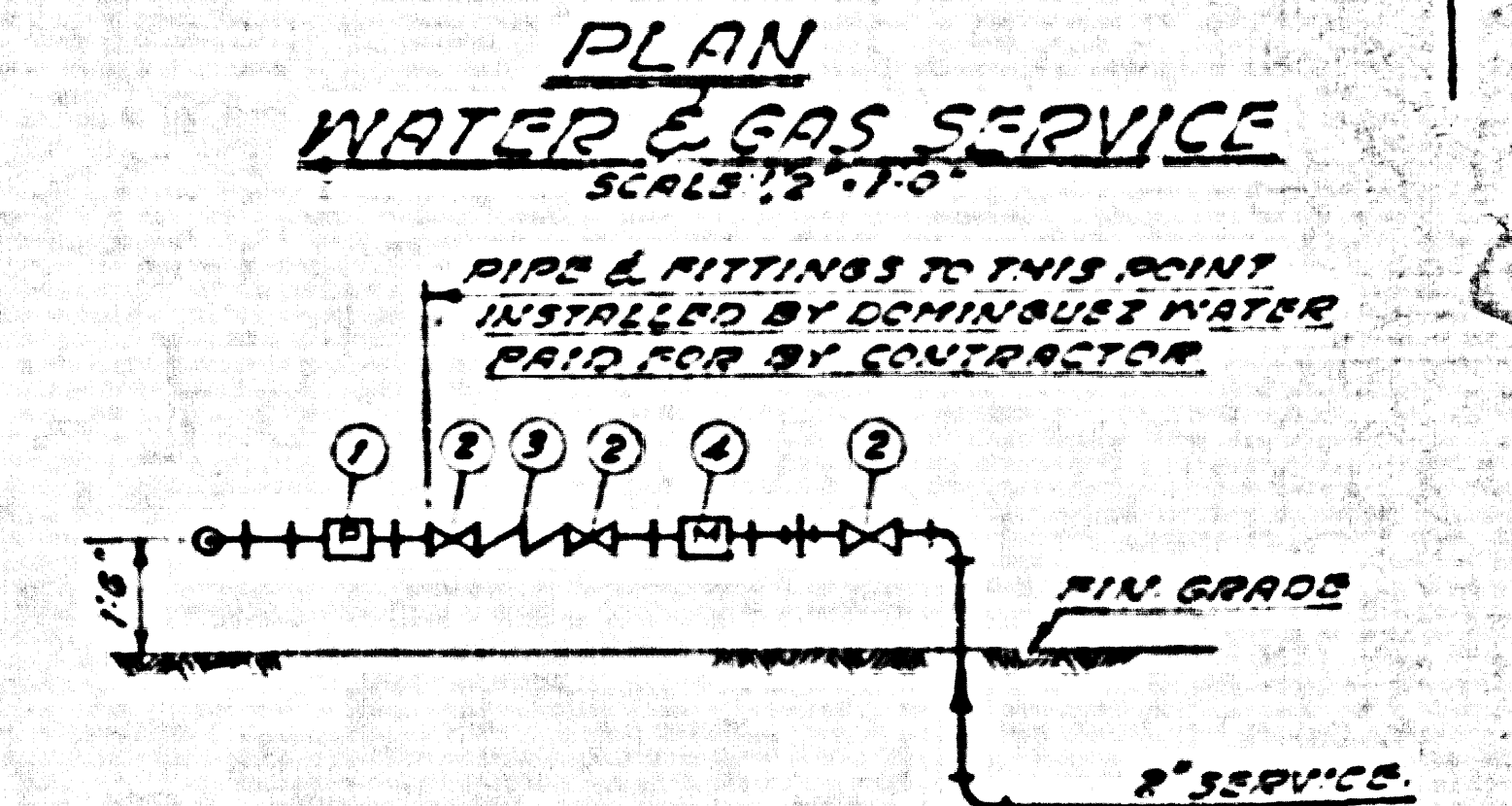
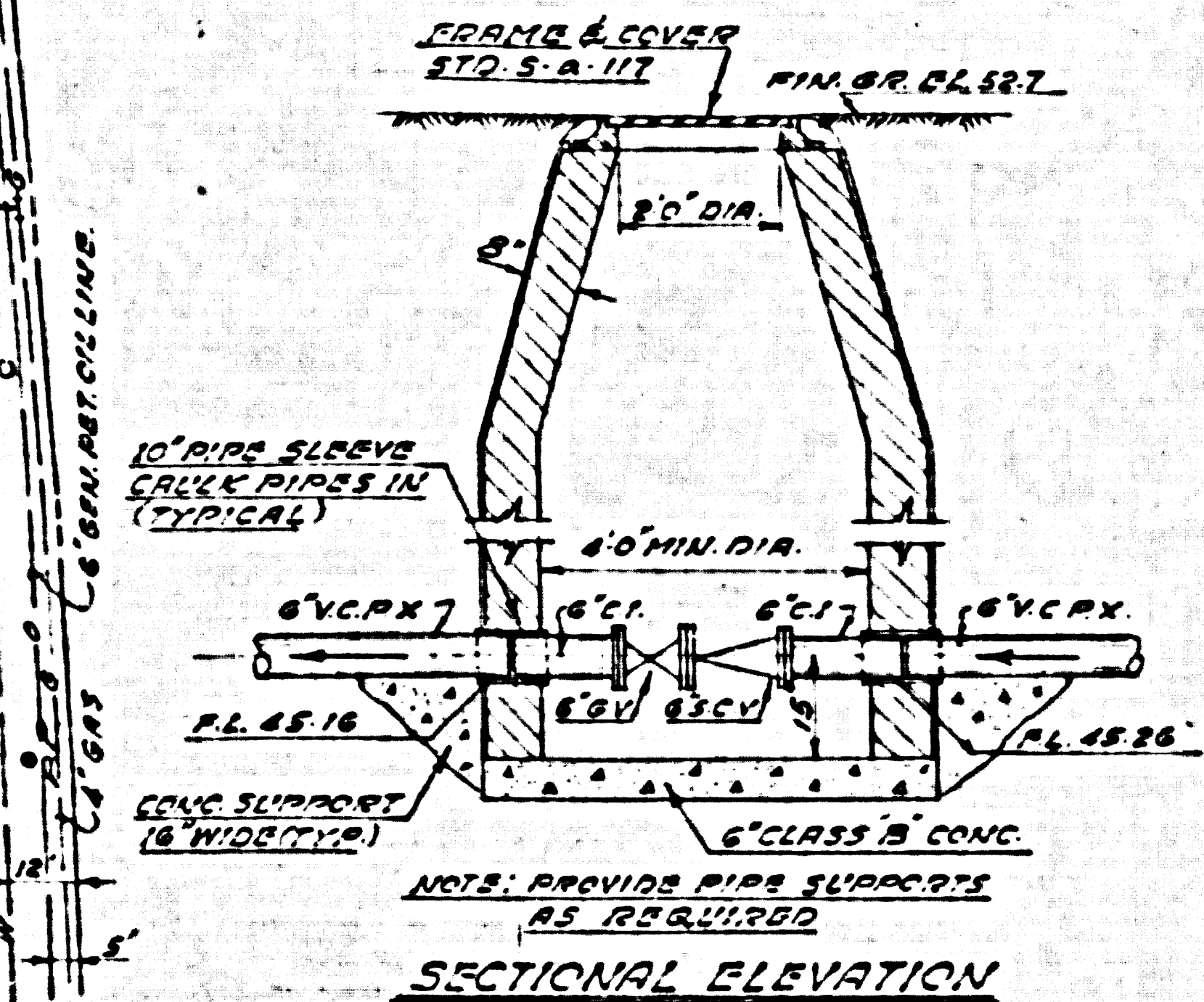
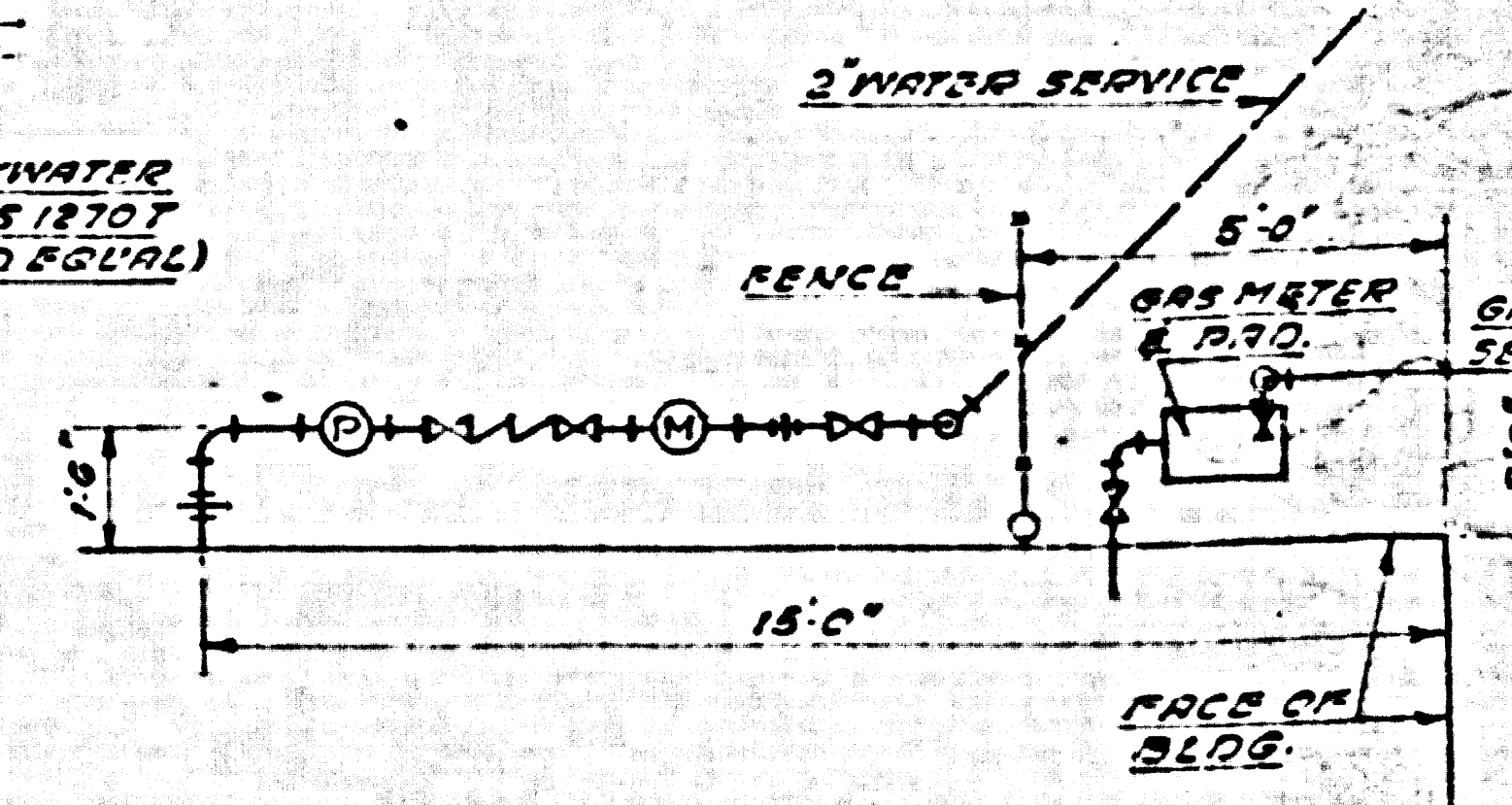
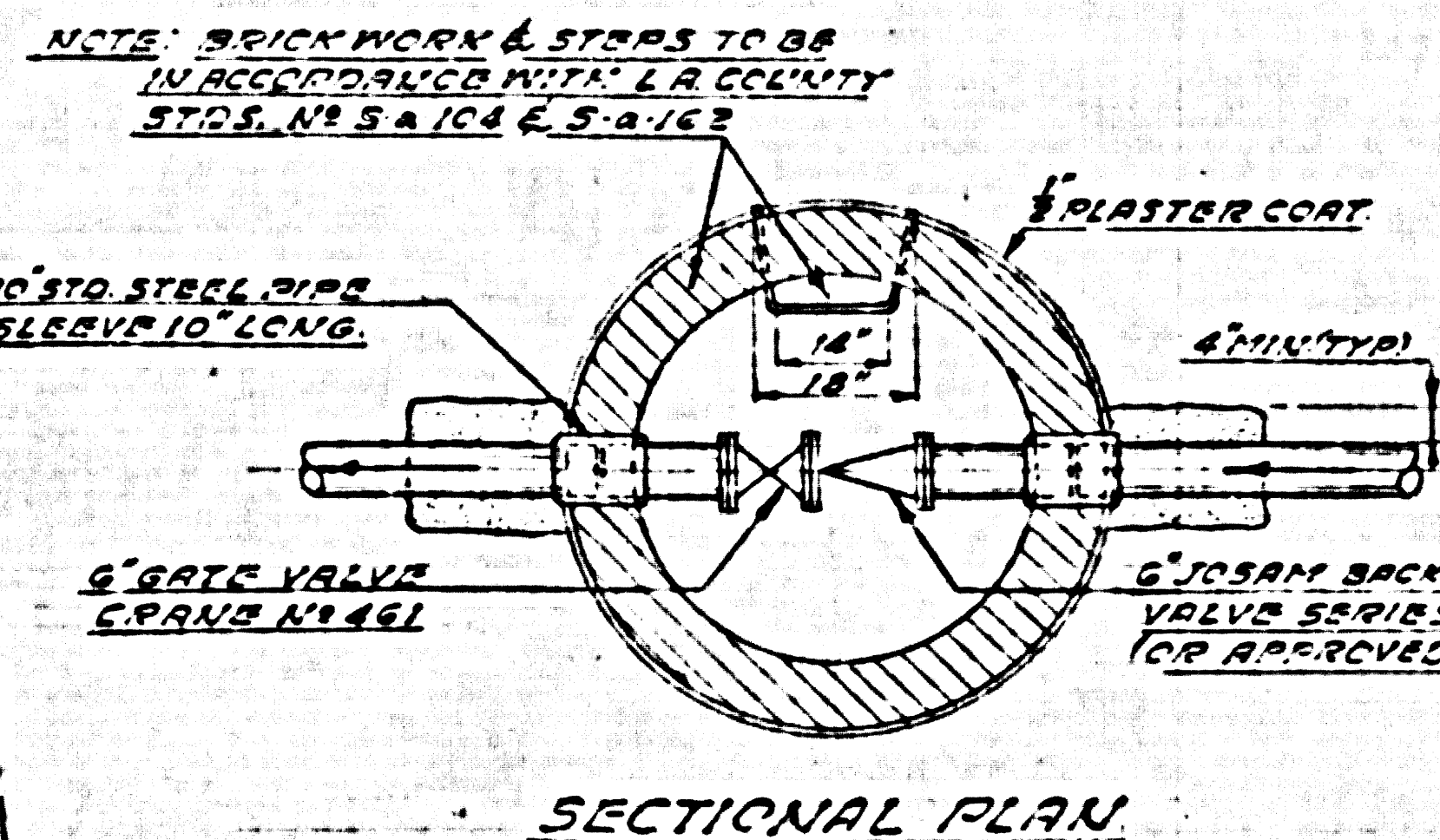
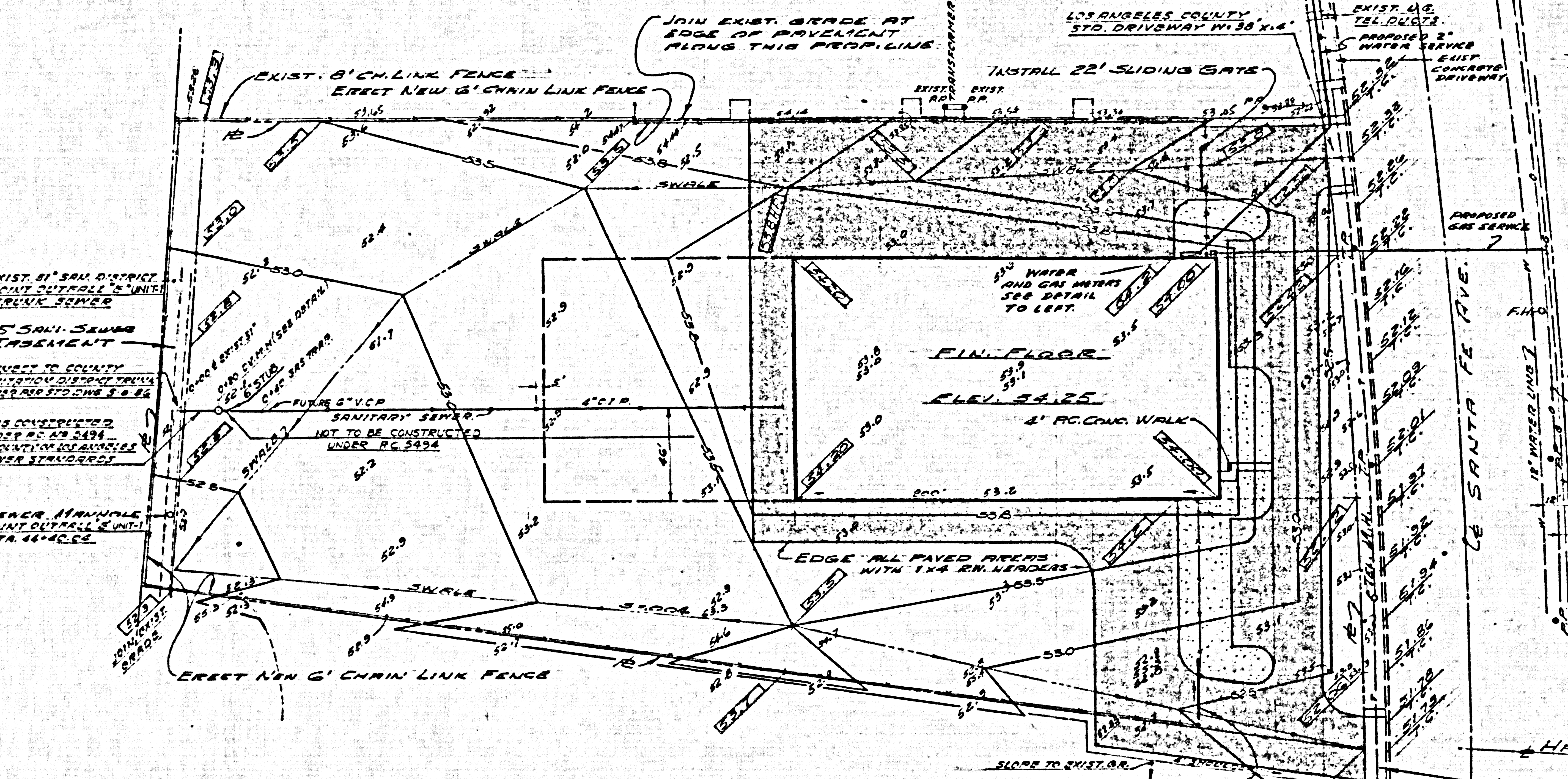


U.S. FIBER GLASS CO. PLANT



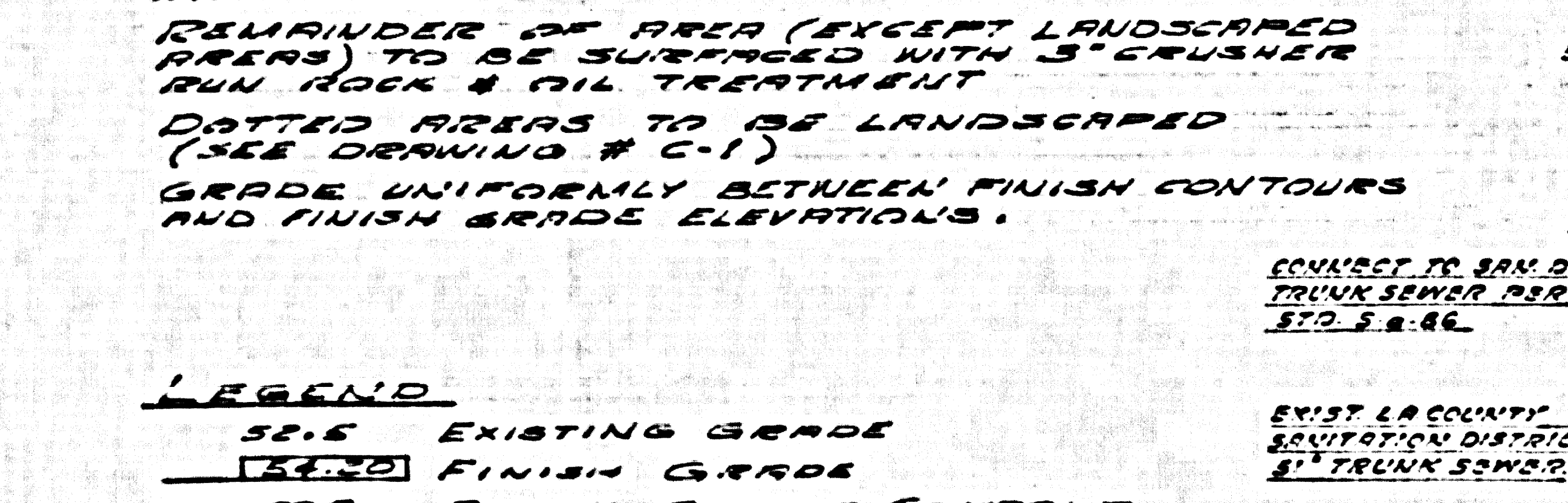
CHECK VALVE MANHOLE DETAILS
SCALE: 1/4" = 1'-0"

ELEVATION WATER SERVICE
SCALE: 1/8" = 1'-0"

- 1 PRESSURE REDUCING VALVE (C.V. VAL. 90)
- 2 GATE VALVE
- 3 BACKFLOW PREVENTER
- 4 METER

29658

GRADING & PAVING NOTES
SHADED AREAS TO BE PAVED WITH 3" ASPHALTIC CONCRETE ON COMPACTED NATIVE SOIL.
REMAINDER OF AREA (EXCEPT LANDSCAPED AREAS) TO BE SURFACED WITH 3" CRUSHER RUN ROCK & OIL TREATMENT.
DOTTED AREAS TO BE LANDSCAPED (SEE DRAWING # C-1)
GRADE UNIFORMLY BETWEEN FINISH CONTOURS AND FINISH GRADE ELEVATIONS.



LEGEND
52.5 EXISTING GRADE
54.25 FINISH GRADE
52.5 FINISH GRADE CONTOUR

DATUM
All elevations shown are taken to the Los Angeles County Road Dept. datum being taken on B.M. 57-355, Brass Plate in concrete, 54' 0" x 50' west of E. of Santa Fe Ave. at H.C. 476123.88 - 1951 elevation = 42.766

NOTE
Reference Dwg. - Pafford & Assoc. Survey No. 5-5800

PRIVATE SEWER
PRIVATE CONTRACT No. 5494
LOMITA BLDG. DIST. No. 71
W. 2325 Basic Order 79-012
SHEETS 1
J.M. 0353.29

Notes:
Elevations are in feet above U.S.C. & G.S. Sea Level Datum of 1929.
This Drawing and the data hereon are hereby made a part of the specifications.
Work shall be constructed according to specifications on file in the office of the County Engineer and shall be executed only in the presence of the County Engineer.
Before work can be started, the contractor must obtain a permit to excavate in County streets from the L.A. County Road Department, 108 West Second Street and a permit to cover construction inspection and record plans from the County Engineer, Room 314, 253 South Broadway.
If work is to be done in a state highway, a permit must be obtained from the state of California, Division of Highways, 120 South Spring Street.
Approval of this plan by the County of Los Angeles does not constitute a representation as to the accuracy of the location of, or the existence or non-existence of, any underground utility, pipe, or structure within the limits of this project.

1. Use standard manhole frames and covers, 5'-11", except as noted.
2. Use standard strength pipe, except as noted.
3. Use cement mortar for all vitrified clay pipe joints.
4. Resurface all trench within paved area to meet Los Angeles County Road Department or California State Highway requirements, as accordance with permit.
5. Enclose four feet of sewer at points of interference with poles as per 5-119.
6. All structures shall be brick cover structures 5'-10", except as noted.

NOTES:
THE CONTRACTOR SHALL NOTIFY THE CONSTRUCTION AND STORAGE DIVISION BY TELEPHONE, MADISON 9-4747, EXT. 302, AT LEAST 24 HOURS BEFORE STARTING ANY WORK UNDER THIS CONTRACT.

COUNTY OF LOS ANGELES, CALIFORNIA
APPROVED: JOHN A. LAMBE, County Engineer
By: [Signature] District Engineer
By: [Signature] Chief Engineer
Checked: [Signature] 4/19/60
Office of County Engineer Reg. C.E. No. 3436
APPROVED: [Signature] 4/19/60
INDUSTRIAL WASTE DIVISION DATE

THE ABOVE APPROVAL OF PRIVATE CONTRACT 5494 PERTAINS ONLY TO THE 6" SEWER AND MANHOLE BETWEEN STA. 0+00 AND STA. 0+20.0

	QUINTON ENGINEERS, LTD. planning • engineering • architecture Los Angeles, California	DOMINGUEZ ESTATE CO. TRAIL AIRE INC. OWNER	GRADING, PAVING & UTILITIES	SHEETS: 60001 DATE: C-2 DRAWN BY: LONNER CHECKED BY: LONNER
	TRAIL AIRE INC. GRADING, PAVING & UTILITIES			