

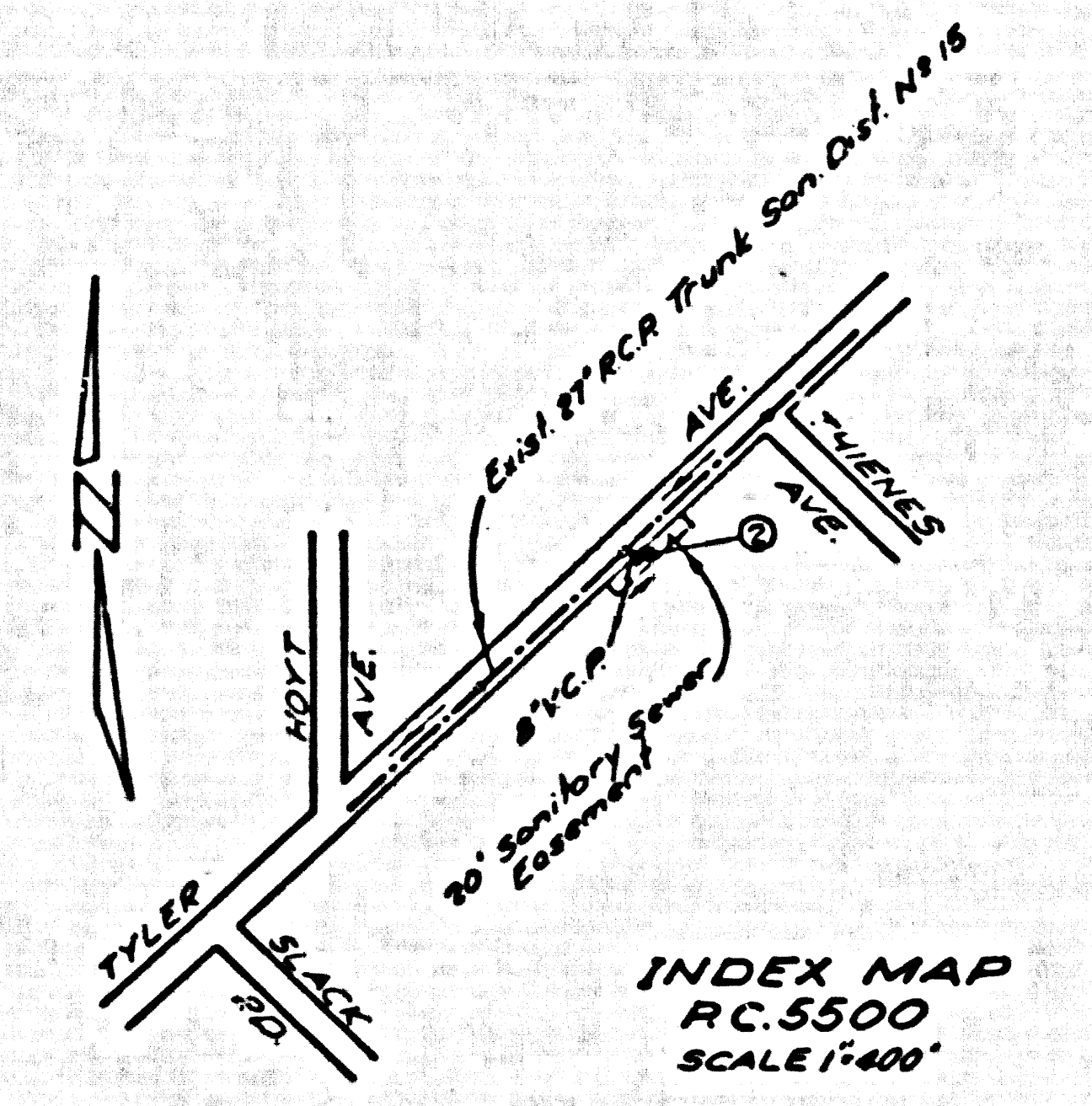
SOUTH EL MONTE BLDG. DIST. NO. 5.04

PROFILE ALIGNMENT AND GRADE OF P.C.5500
SANITARY SEWERS PAGE 1
TO BE CONSTRUCTED IN 016564

BENCH MARK: Whittier Quad Elev 260.509
S.G. 1538 Adj. 1955
L & T. in S. End of 1st Conc. Strip to House #2405,
Tyler Ave., N.W. Cor. Tyler Ave & Rush St.

- NOTES:**
1. PROVIDE STAKES ON THE PROPERTY LINE OR PROPERTY LINES PRODUCED AT RIGHT ANGLES TO THE SEWER LINE AT THE CENTER LINE OF EACH MANHOLE.
 2. NO REPRESENTATIVE OF THE CITY ENGINEER WILL SURVEY OR LAY OUT ANY PORTION OF THE WORK.
 3. THE OWNER OR HIS AUTHORIZED REPRESENTATIVE SHALL FURNISH THE CITY ENGINEER WITH GRADE SHEETS AND STATIONING FOR ALL HOUSE LATERALS AND BRANCHES AND SHALL PROVIDE STAKES FOR THEM AT THEIR PROPER LOCATIONS WITH STATIONING PLAINLY MARKED. ANY CHANGE IN LOCATION SHALL BE REQUESTED IN WRITING BY THE OWNER OR HIS REPRESENTATIVE.
 4. THE PRIVATE ENGINEER SHALL FURNISH THE HOUSE LATERAL DEPTH AT THE PROPERTY LINE BELOW THE TOP OF CURB ELEVATION FOR EACH HOUSE LATERAL ON THE GRADE SHEET.
 5. NO REVISIONS SHALL BE MADE IN THESE PLANS WITHOUT THE APPROVAL OF THE CITY ENGINEER.
 6. USE STANDARD MANHOLE FRAMES AND COVERS, S-117.
 7. USE STANDARD STRENGTH PIPE EXCEPT AS NOTED.
 8. USE CEMENT MORTAR OR "WEB&LOCK" OR "SPEED-SEAL" FOR ALL V.C.P. JOINTS PER SPECS. SECS. 36 & 42.
 9. RESURFACE ALL TRENCH WITHIN PAVED AREA TO MEET L.A. COUNTY ROAD DEPT. OR CALIF. STATE HIGHWAY REQUIREMENTS IN ACCORDANCE WITH PERMITS.
 10. IN CASE FOUR FEET OF SEWER AT POINTS OF INTERFERENCE WITH POLES, CASE III, S-172.
 11. HOUSE LATERALS TO BE CONSTRUCTED WITH 1/8" RISE PER FT. TO PROPOSED WIDENING LINE.
 12. ALL STRUCTURES SHALL BE BRICK SEWER STRUCTURES, S-104, EXCEPT AS NOTED.
 13. FOR ALLOWABLE LEAKAGE TEST USE FORMULA NO. 1, SPECS. SEC. 84.
 14. MANHOLE TOPS IN UNIMPROVED RIGHTS-OF-WAY TO BE SIX INCHES ABOVE FINISHED GRADE.
 15. THE CONTRACTOR SHALL NOTIFY THE DESIGN DRAWN DIVISION BY TELEPHONE, MADISON 5-810, AT 8:15 A.M. AT LEAST TWENTY-FOUR HOURS BEFORE STARTING ANY WORK UNDER THIS CONTRACT.

PRIVATE CONTRACT NO. 5500
W.S. 37
1 SHEET OF 2 PAGES
SCALE: VERT. 1"=4'
HORIZ. 1"=40' MAY 1960
PREPARED IN THE OFFICES OF
ADAMS AND ELLS
CIVIL ENGINEERS
BY: William P. Dyer
REG. C. E. NO. 10880
FOR LEGEND SEE PLAN NO. S-A-44

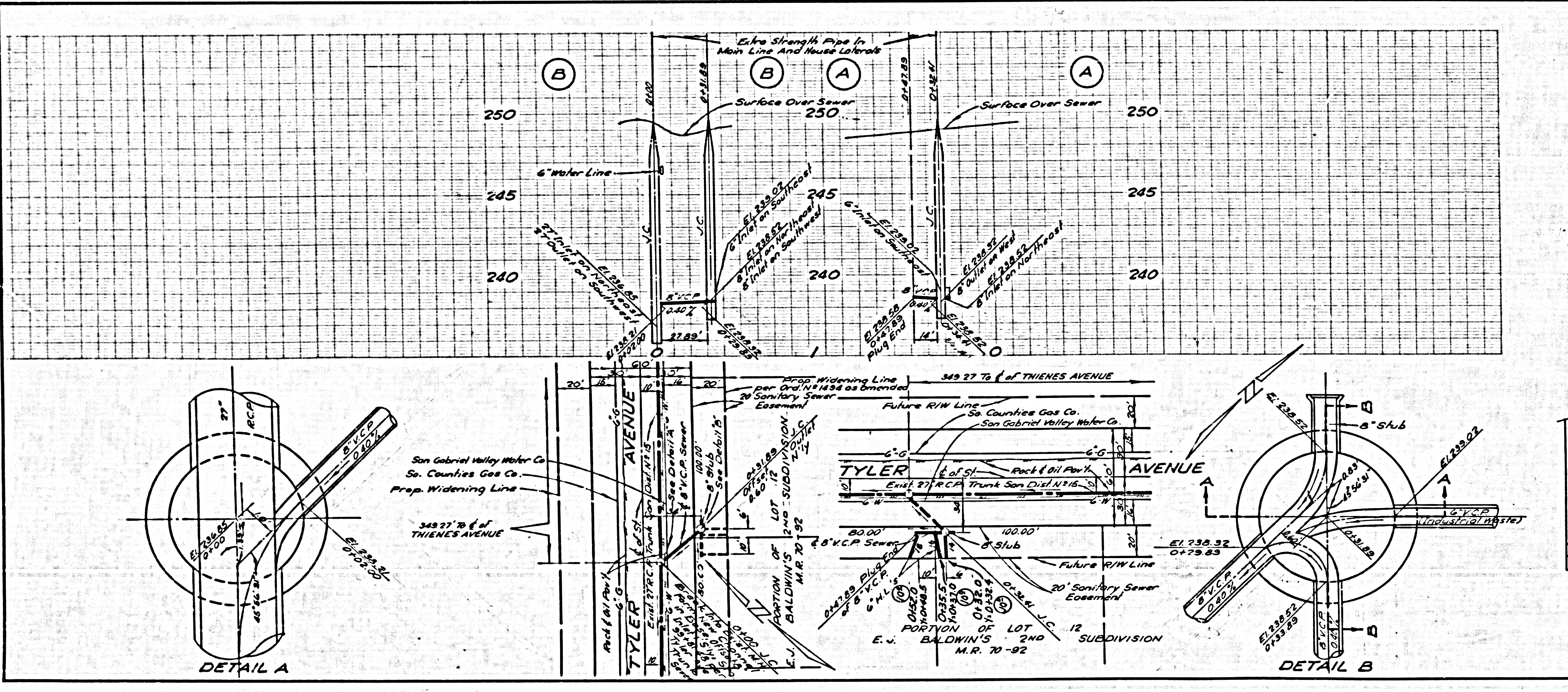


NO CHARGE FOR CONNECTIONS
A. B. Albertson 5/18/60

Before breaking into any existing structure and before final acceptance of this work, County Sanitation District (DU 4-1281) shall be notified in order that required inspection can be made.

APPROVED, INDUSTRIAL WASTE DIV.
By: *J. H. Stewart* DATE 5/18/60

NOTES:
GRADES TO WHICH THIS IMPROVEMENT IS TO BE CONSTRUCTED ARE SHOWN ON PLANS AND PROFILES. GRADE POINTS FOR TOP OF CURBS, CENTER LINE OF STREETS, OR CENTER LINE OF ALLEYS ARE SHOWN BY CIRCLES ON PROFILES. AT ALL POINTS BETWEEN DESIGNATED POINTS THE GRADE SHALL BE ESTABLISHED SO AS TO CONFORM TO A STRAIGHT LINE DRAWN BETWEEN SAID DESIGNATED POINTS.
ELEVATIONS ARE IN FEET ABOVE U.S.C. & G.S. SEA LEVEL DATUM OF 1929.
THIS DRAWING AND THE DATA HEREON ARE HEREBY MADE A PART OF THE SPECIFICATIONS. WORK SHALL BE CONSTRUCTED ACCORDING TO SPECIFICATIONS ON FILE IN THE OFFICE OF THE CITY ENGINEER AND SHALL BE PROSECUTED ONLY IN THE PRESENCE OF THE CITY ENGINEER.
BEFORE WORK CAN BE STARTED THE CONTRACTOR MUST OBTAIN A PERMIT TO EXCAVATE IN CITY STREETS FROM THE L. A. COUNTY ROAD DEPT., DISTRICT OFFICE NO. 1, AND HAVE A REPORT WITH THE CITY ENGINEER ROOM 324 PAR AMERICAN BUILDING, 252 SO. BROADWAY SUFFICIENT TO COVER THE COST OF CONSTRUCTION INSPECTION AND RECORD PLANS.
APPROVAL OF THIS PLAN BY THE CITY OF SOUTH EL MONTE DOES NOT CONSTITUTE A REPRESENTATION AS TO THE ACCURACY OF THE LOCATION OR OF THE EXISTENCE OR NON-EXISTENCE OF ANY UNDERGROUND UTILITY PIPE, OR STRUCTURE WITHIN THE LIMITS OF THIS PROJECT. THIS NOTE APPLIES TO ALL PAGES.
IF WORK IS TO BE DONE IN A STATE HIGHWAY, A PERMIT MUST BE OBTAINED FROM THE STATE OF CALIFORNIA, DIVISION OF HIGHWAYS, 126 SOUTH SPRING STREET.
CITY OF SOUTH EL MONTE, CALIFORNIA
APPROVED, JOHN A. LAMBIE, CITY ENGINEER APPROVED, A. M. RAWN, CHIEF ENGINEER
BY: *C. E. Priddy* ASST. SANITATION ENGINEER BY: *A. B. Albertson* CHIEF ENGINEER
CHECKED BY: *G. K. Duda 5-17-60*
OFFICE OF COUNTY ENGINEER, REG. C. E. NO. 2416
SUBMITTED: *N. J. Breuer*
SAN GABRIEL VALLEY REGIONAL ENGINEER



P.C.5500 PAGE 2
NO CHARGE FOR CONNECTIONS

