

BENCH MARK
 A STANDARD COUNTY SURVEYOR'S MONUMENT,
 SET IN CONCRETE 10' BELOW SURFACE,
 BEARING 107° 11' 31" S. 11° 31' 31" E. 60' AND LOCATED
 8' WEST OF THE WEST EDGE OF PALOMINO BLVD.
 AND 8' EAST OF THE EAST EDGE OF PLATINA BLVD.
 AND 8' EAST OF THE EAST EDGE OF MEADOW DRIVE
 AND 8' EAST OF THE EAST EDGE OF PROSPECT VALLEY DRIVE
 MONUMENT MARKED BY COUNTY SURVEYOR'S MONUMENT
 NO. 1376-82.
 1952 ADJUSTED ELEV. 684.191

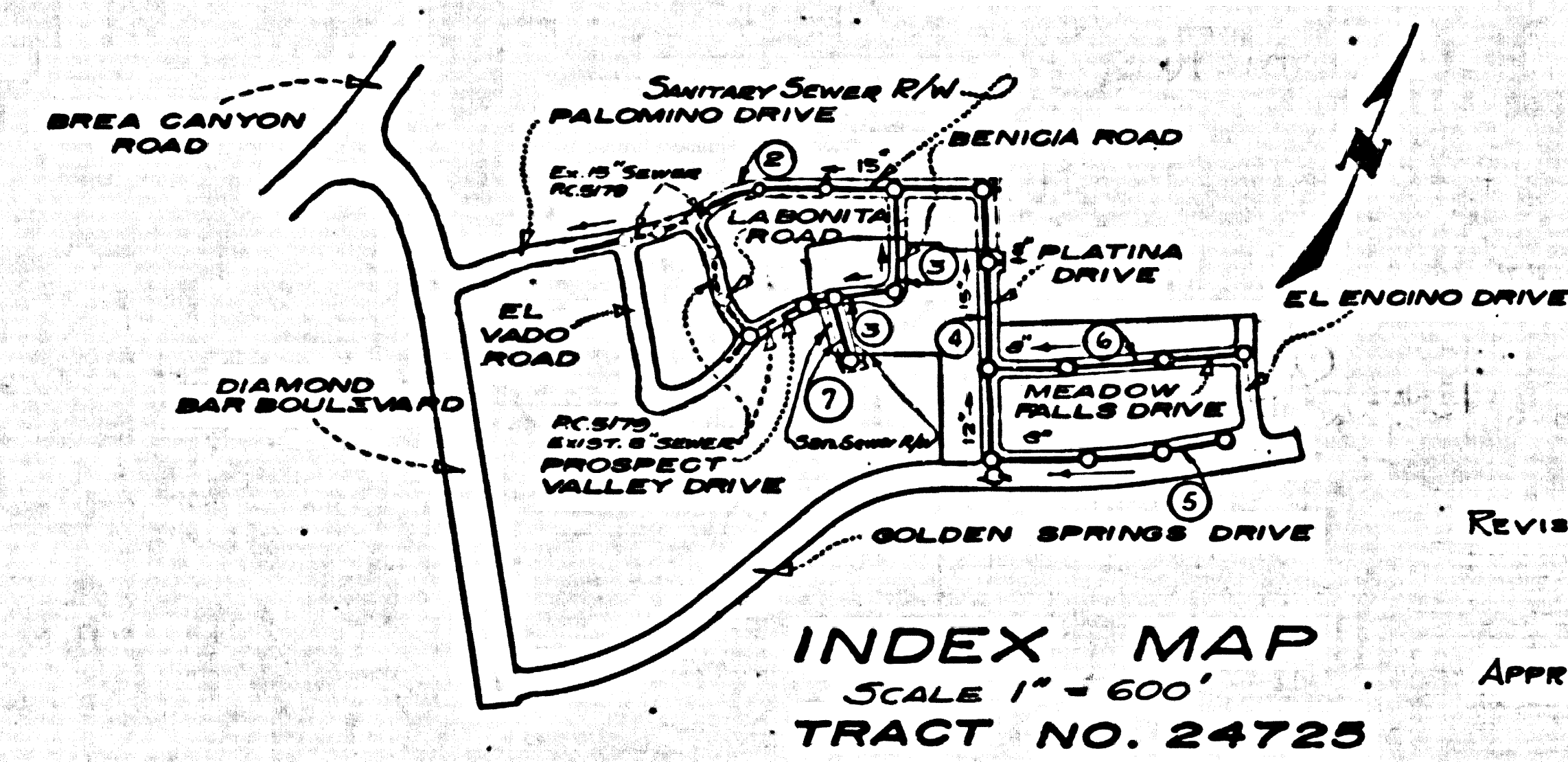
- NOTES CONTINUED**
11. (a) NO CONSTRUCTION WILL BE PERMITTED IN FILLED AREAS UNLESS ACCEPTABLE CERTIFICATION IS SUBMITTED TO THE CONSTRUCTION DIVISION OF THE COUNTY ENGINEER'S DEPARTMENT THAT RELATIVE COMPACTION IS GREATER THAN 80%.
 - (b) IF COMPACTION IS LESS THAN 80% THE SEWER MUST BE CRAWLED AS SHOWN ON PLANS PER 5-A-166.
 - (c) IF COMPACTION IS GREATER THAN 80% CRAWLING IS NOT REQUIRED. HOWEVER, JOINT COMPOUND OR "WEDGE LOCK" OR "SPEED SEAL" MUST BE SUBSTITUTED FOR CEMENT MORTAR FOR ALL JOINTS IN FILLED AREAS.

SAN DIMAS BLDG. DIST. NO. 10

PROFILE ALIGNMENT AND GRADE OF **P.C.5503**
SANITARY SEWERS PAGE 1
 TO BE CONSTRUCTED IN **J.N.0353.35**
TRACT NO. 24725

PRIVATE CONTRACT NO. 5503
 W.S.39
 4 SHEETS; 7 PAGES
 SCALE: VERT. 1" = 4' HORIZ. 1" = 40'
 PREPARED IN THE OFFICES OF
BAKER, PAFFORD AND ASSOC.
 1632 WEST 5TH AVE. POMONA, CALIF.
 BY *William B. Bennett*
 REG. C. E. NO. 9623
 FOR LEGEND SEE PLAN NO. S-A-64

NO CHARGE FOR CONNECTIONS
 7/27/60 JMB 4-25-60

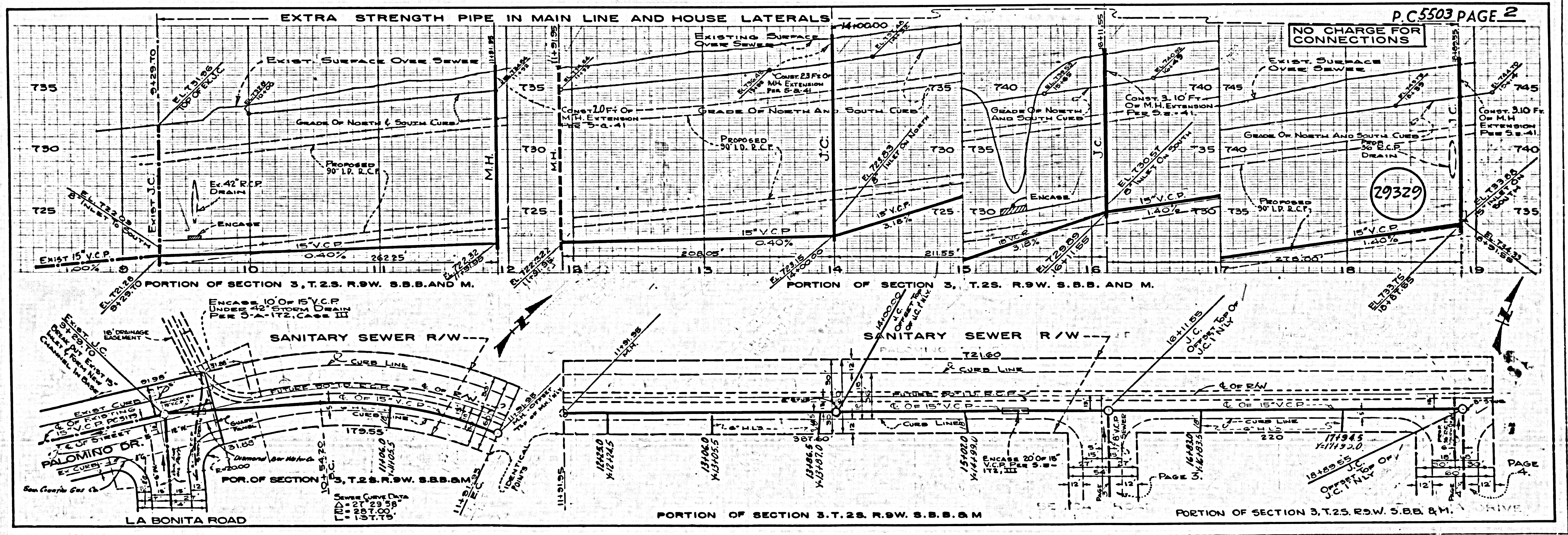


INDEX MAP
 SCALE 1" = 600'
 TRACT NO. 24725

- NOTES:**
1. PROVIDE STAKES ON THE PROPERTY LINE OR PROPERTY LINES PRODUCED AT RIGHT ANGLES TO THE SEWER LINE AT THE CENTER LINE OF EACH MANHOLE.
 2. NO REPRESENTATIVE OF THE COUNTY ENGINEER WILL SURVEY OR LAY OUT ANY PORTION OF THE WORK.
 3. THE OWNER OR HIS AUTHORIZED REPRESENTATIVE SHALL FURNISH THE COUNTY ENGINEER WITH GRADE SHEETS AND STATIONING FOR ALL HOUSE LATERALS AND Y BRANCHES AND SHALL PROVIDE STAKES FOR THEM AT THEIR PROPER LOCATIONS WITH STATIONING PLAINLY MARKED. ANY CHANGE IN LOCATION SHALL BE REQUESTED IN WRITING BY THE OWNER OR HIS REPRESENTATIVE.
 4. THE PRIVATE ENGINEER SHALL FURNISH THE HOUSE LATERAL DEPTH AT THE PROPERTY LINE BELOW THE TOP OF CURB ELEVATION FOR EACH HOUSE LATERAL ON THE GRADE SHEET.
 5. NO REVISIONS SHALL BE MADE IN THESE PLANS WITHOUT THE APPROVAL OF THE COUNTY ENGINEER.
 6. USE STANDARD MANHOLE FRAMES AND COVERS, S-117.
 7. USE STANDARD STRENGTH PIPE EXCEPT AS NOTED.
 8. USE CEMENT MORTAR OR "WEDGE-LOCK" OR "SPEED-SEAL" FOR ALL V.C.P. JOINTS PER SPECS. SECS. 11 & 12.
 9. REINFORCE ALL TRENCH WITHIN PAVED AREA TO MEET L.A. COUNTY ROAD DEPT. OR CALIF. STATE HIGHWAY REQUIREMENTS IN ACCORDANCE WITH PERMITS.
 10. ENCASE FOUR FEET OF SEWER AT POINTS OF INTERFERENCE WITH POLES, CASE III, S-172.
 11. HOUSE LATERALS TO BE CONSTRUCTED WITH INVERTS AT PROPERTY LINE 6 FEET BELOW CURB GRADE EXCEPT AS NOTED.
 12. ALL STRUCTURES SHALL BE BRICK SEWER STRUCTURES, S-104.
 13. FOR ALLOWABLE LEAKAGE TEST USE FORMULA NO. 1, SPECS. SEC. 14.
 14. MANHOLE TOPS IN UNIMPROVED RIGHTS-OF-WAY TO BE SIX INCHES ABOVE FINISHED GRADE.
 15. THE CONTRACTOR SHALL NOTIFY THE CONSTRUCTION & STORM DRAIN DIVISION BY TELEPHONE, MADISON 3-47, EXT. 10, AT LEAST TWENTY-FOUR HOURS BEFORE STARTING ANY WORK UNDER THIS CONTRACT.
 16. STANDARD SPECIFICATIONS DATED JAN. 1, 1960 APPLY IN THE CONSTRUCTION OF THIS PROJECT.

NOTE:
 GRADES TO WHICH THIS IMPROVEMENT IS TO BE CONSTRUCTED ARE SHOWN ON PLANS AND PROFILES. GRADE POINTS FOR TOP OF CURB, CENTER LINE OF STREETS OR CENTER LINE OF ALLEYS ARE SHOWN BY CIRCLES ON PROFILES. AT ALL POINTS BETWEEN DESIGNATED POINTS THE GRADE SHALL BE ESTABLISHED SO AS TO CONFORM TO A STRAIGHT LINE DRAWN BETWEEN SAID DESIGNATED POINTS.
 ELEVATIONS ARE IN FEET ABOVE U.S.C. & G.S. SEA LEVEL DATUM OF 1929.
 THIS DRAWING AND THE DATA HEREON ARE HEREBY MADE A PART OF THE SPECIFICATIONS.
 WORK SHALL BE CONSTRUCTED ACCORDING TO SPECIFICATIONS ON FILE IN THE OFFICE OF THE COUNTY ENGINEER AND SHALL BE PROSECUTED ONLY IN THE PRESENCE OF THE COUNTY ENGINEER.
 BEFORE WORK CAN BE STARTED THE CONTRACTOR MUST OBTAIN A PERMIT TO EXCAVATE IN COUNTY STREETS FROM THE L.A. COUNTY ROAD DEPT., DISTRICT OFFICE NO. 1, AND PAY A FEE TO THE COUNTY ENGINEER ROOM 224 SAN AMERICAN BUILDING, 315 20. BROADWAY SUFFICIENT TO COVER THE COST OF CONSTRUCTION INSPECTION AND RECORD PLANS.
 APPROVAL OF THIS PLAN BY THE COUNTY OF LOS ANGELES DOES NOT CONSTITUTE A REPRESENTATION AS TO THE ACCURACY OF THE LOCATION OF OR THE EXISTENCE OR NON-EXISTENCE OF ANY UNDERGROUND UTILITY PIPE, OR STRUCTURE WITHIN THE LIMITS OF THIS PROJECT. THIS NOTE APPLIES TO ALL PAGES.
 IF WORK IS TO BE DONE IN A STATE HIGHWAY, A PERMIT MUST BE OBTAINED FROM THE STATE OF CALIFORNIA, DIVISION OF HIGHWAYS, 120 SOUTH SPRING STREET.

COUNTY OF LOS ANGELES, CALIFORNIA
 APPROVED, JOHN A. LAMBIE, COUNTY ENGINEER
 APPROVED, C.E. Bennett, CHIEF ENGINEER
 BY *C.E. Bennett* 3-DIST. SANITATION ENGINEER
 CHECKED BY *B.F. Worling* 4-28-60
 OFFICE OF COUNTY ENGINEER, REG. C. E. NO. 11636
 SUBMITTED *W.C. Poindexter* SAN DIMAS REGIONAL ENGINEER



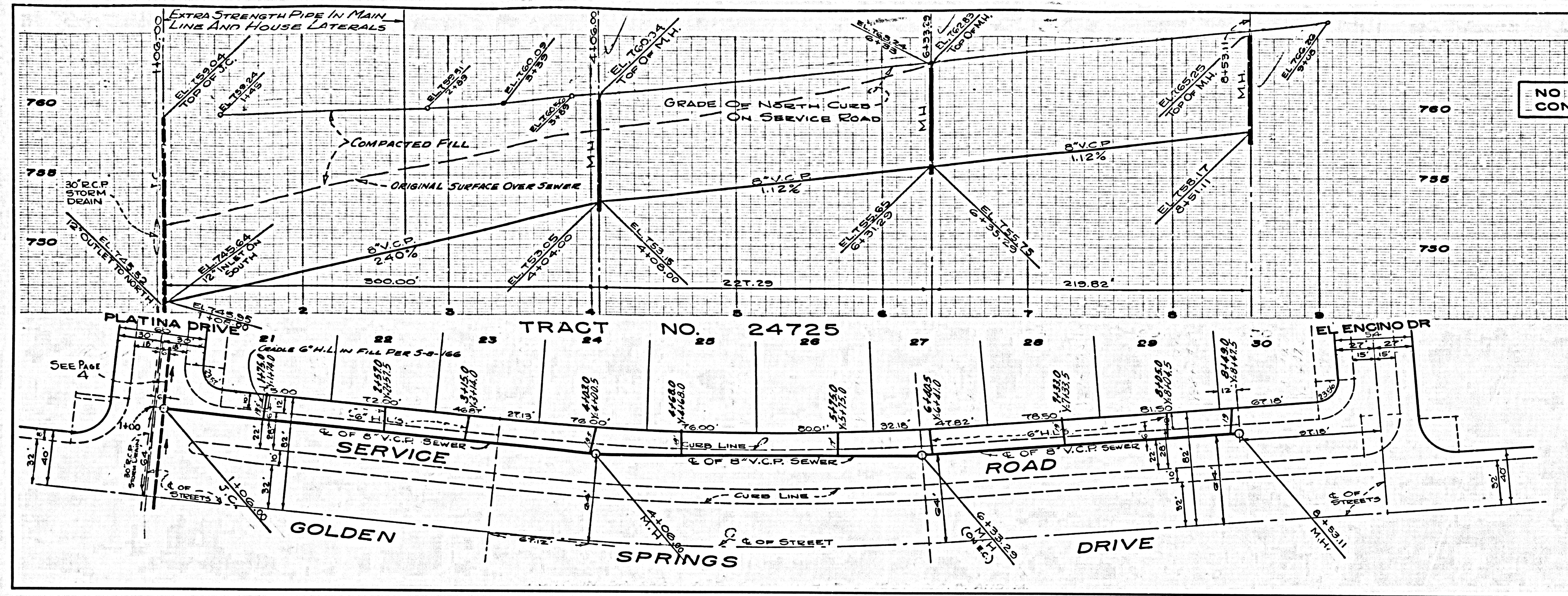
NO CHARGE FOR CONNECTIONS

29329

PAGE 2

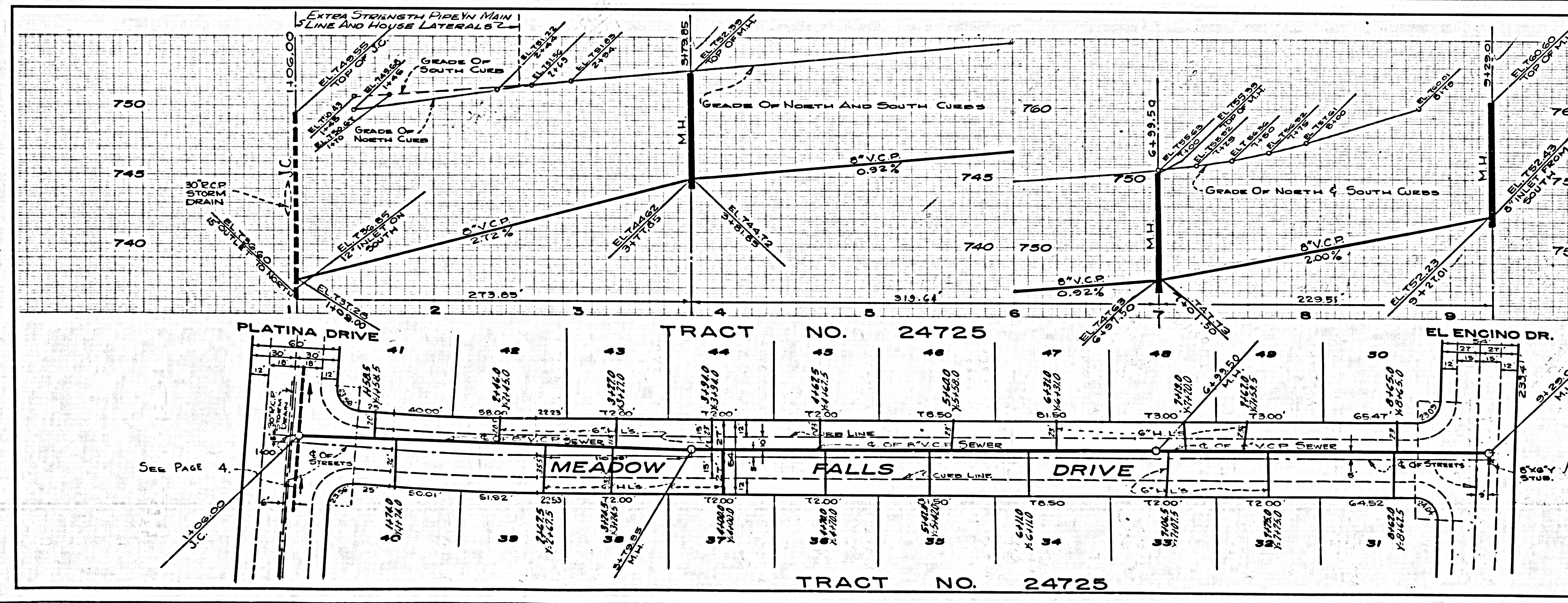
NO CHARGE FOR CONNECTIONS

29332



NO CHARGE FOR CONNECTIONS

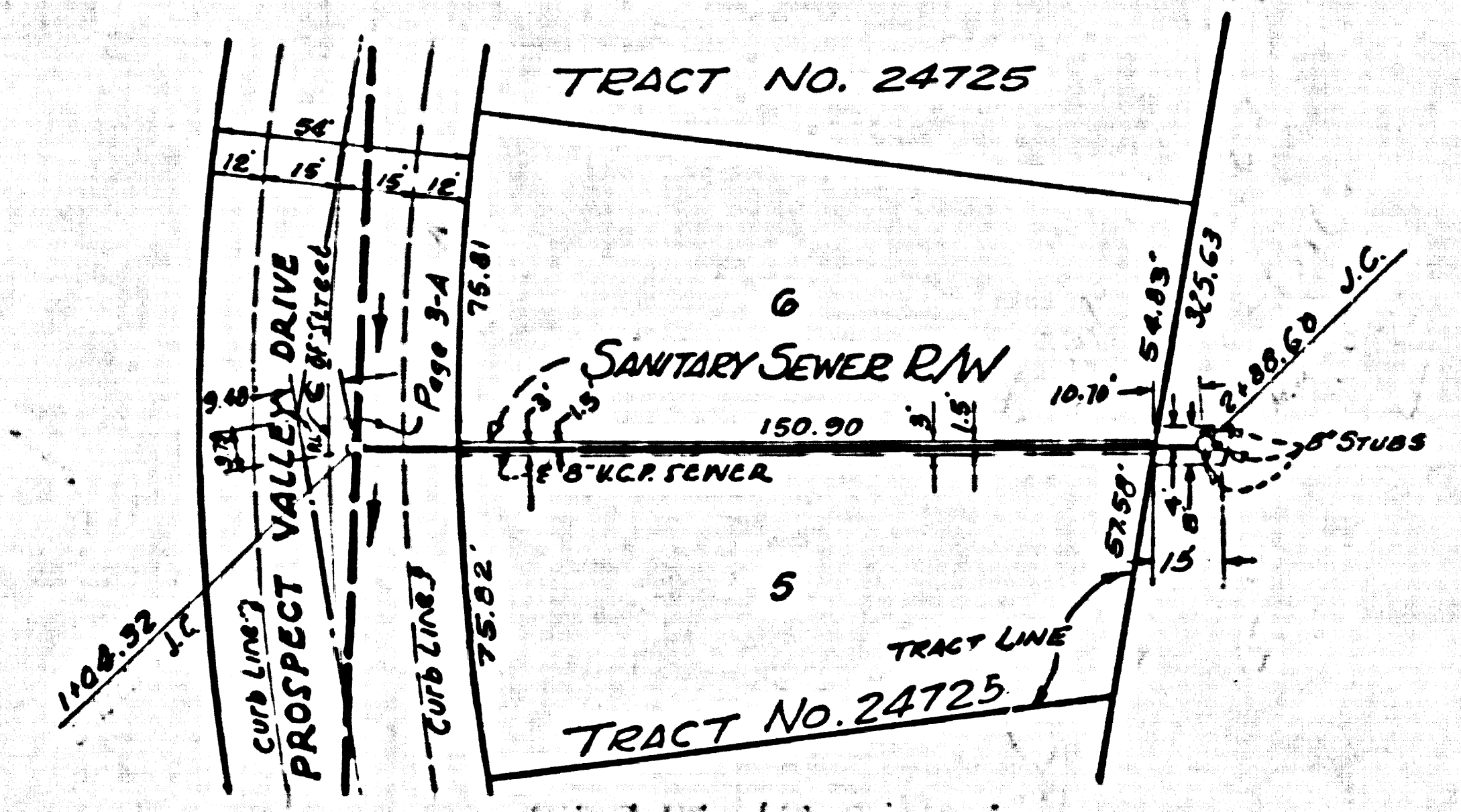
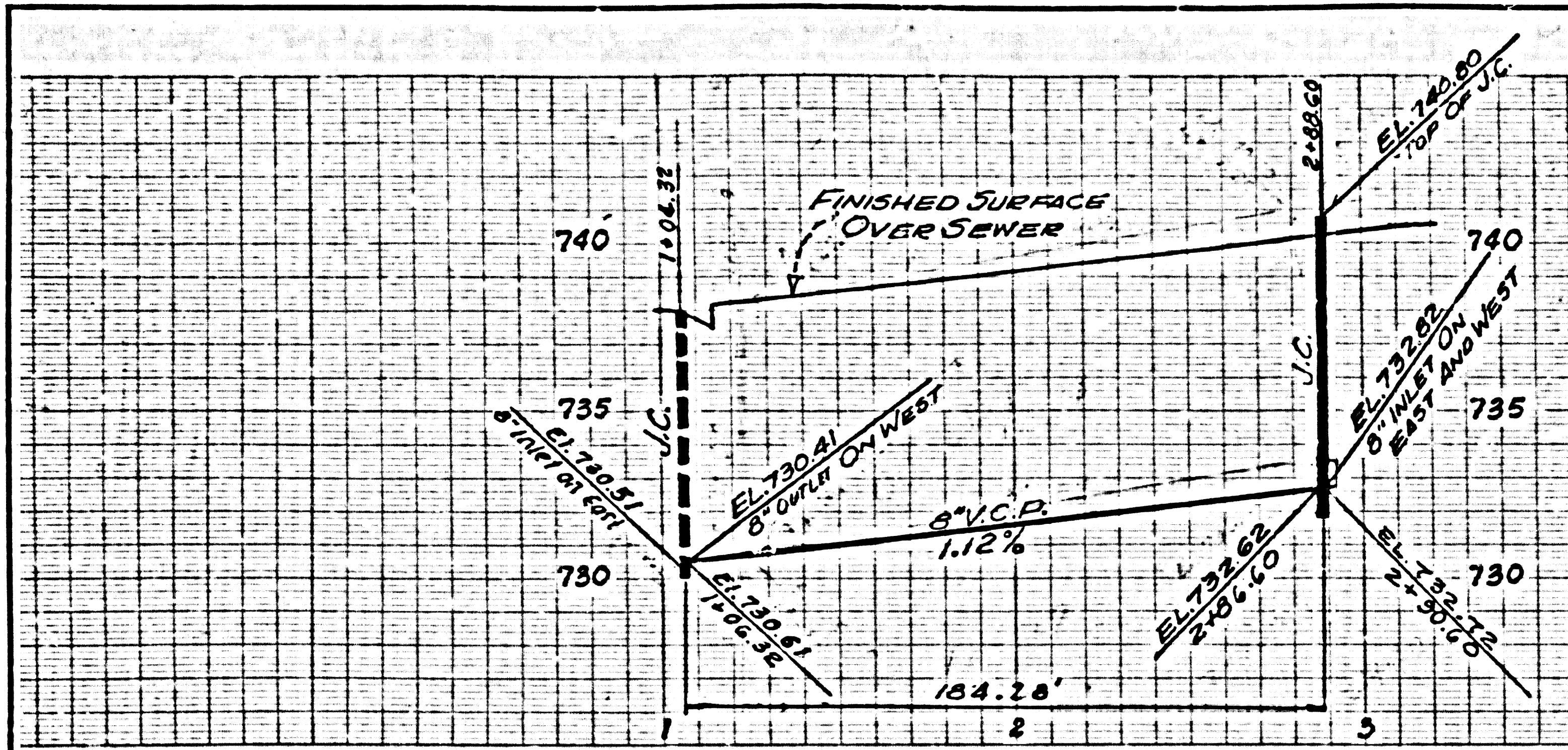
29333



Portion of Section 3
T. 23. E. 21. S. 18. C. 1. M.

NO CHARGE FOR CONNECTIONS

29334



PORTION OF SEC. 3, T.25, R.9W, S.88&M.

