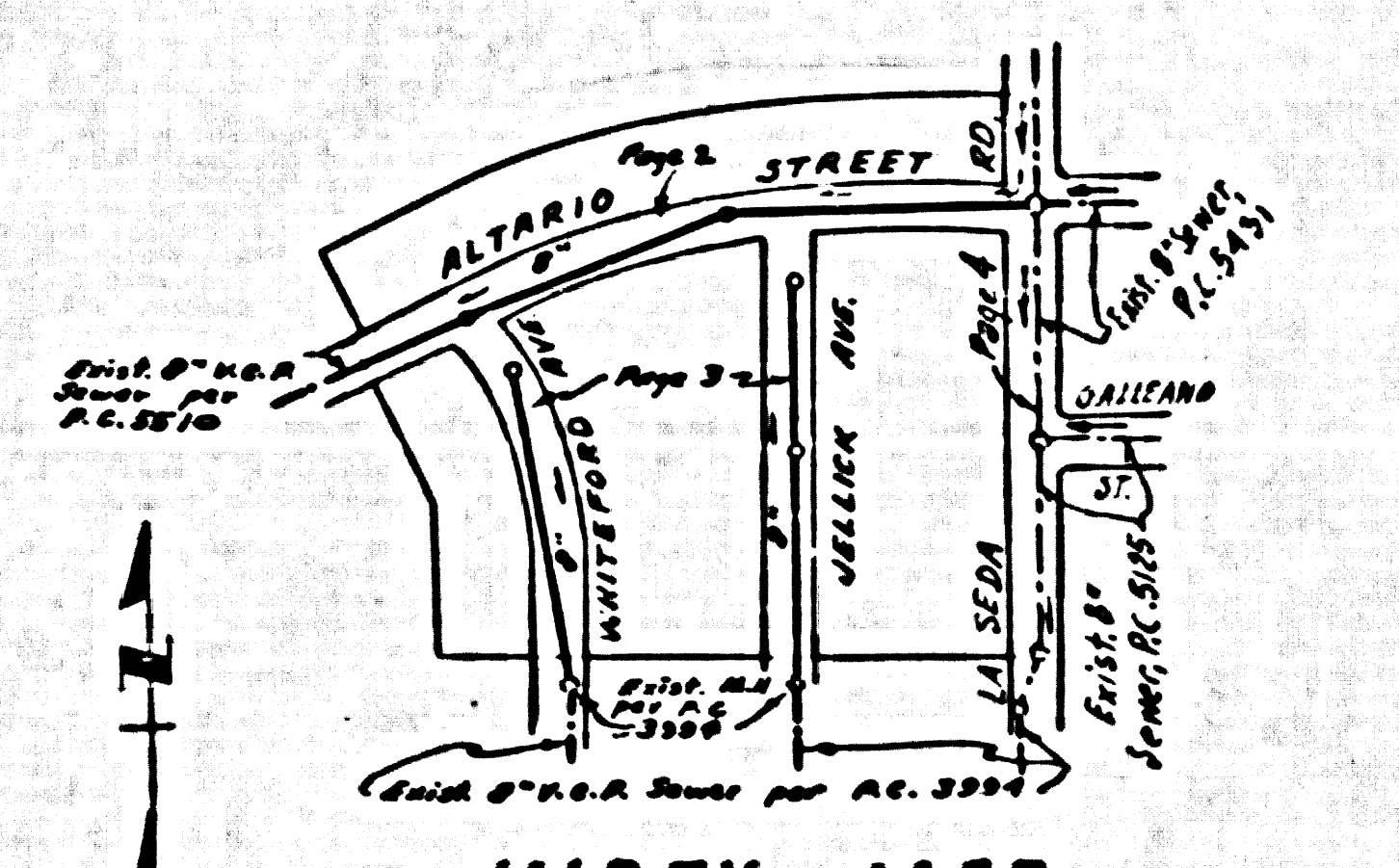


BENCH MARK
 Monument in N.W. marked "B.M. 11-103-1952
 R.F. 63, 17.5' N. of & of Valley Blvd. of
 N.W. corner of Valley Blvd. of La Seda Road
 R.F. 1376, 19.92, 1952 Adj. Elev. 418.968



INDEX MAP
 SCALE: 1" = 300'
TRACT NO. 22180

PUENTE BLDG. DIST. NO. 2

- NOTE:
1. PROVIDE STAKES ON THE PROPERTY LINE OR PROPERTY LINES PRODUCED AT RIGHT ANGLES TO THE SEWER LINE AT THE CENTER LINE OF EACH MANHOLE.
 2. NO REPRESENTATIVE OF THE COUNTY ENGINEER WILL SURVEY OR LAY OUT ANY PORTION OF THE WORK.
 3. THE OWNER OR HIS AUTHORIZED REPRESENTATIVE SHALL FURNISH THE COUNTY ENGINEER WITH GRADE SHEETS AND STATIONING FOR ALL HOUSE LATERALS AND MAIN LINES AND SHALL PROVIDE STAKES FOR THEM AT THEIR PROPER LOCATIONS WITH STATIONING PLAINLY MARKED. ANY CHANGE IN LOCATION SHALL BE REQUESTED IN WRITING BY THE OWNER OR HIS REPRESENTATIVE.
 4. THE PRIVATE ENGINEER SHALL FURNISH THE HOUSE LATERAL DEPTH AT THE PROPERTY LINE BELOW THE TOP OF CURB ELEVATION FOR EACH HOUSE LATERAL ON THE GRADE SHEET.
 5. NO REVISIONS SHALL BE MADE IN THESE PLANS WITHOUT THE APPROVAL OF THE COUNTY ENGINEER.
 6. USE STANDARD MANHOLE FRAMES AND COVERS, 2-117.
 7. USE STANDARD STRENGTH PIPE.
 8. USE CEMENT MORTAR OR "WEDGE-LOCK" OR "SPED-SEAL" FOR ALL V.C.P. JOINTS PER SPEC., SECS. 24 & 48.
 9. RESURFACE ALL TRENCH WITHIN PAVED AREA TO MEET L.A. COUNTY ROAD DEPT. OR CALIF. STATE HIGHWAY REQUIREMENTS IN ACCORDANCE WITH PERMITS.
 10. INCASE FOUR FEET OF SEWER AT POINTS OF INTERFERENCE WITH POLES, CASE III, 5-172.
 11. HOUSE LATERALS TO BE CONSTRUCTED WITH INVERTS AT PROPERTY LINE 6 FEET BELOW CURB GRADE.
 12. ALL STRUCTURES SHALL BE BRICK SEWER STRUCTURES, 5-104.
 13. FOR ALLOWABLE LEAKAGE TEST USE FORMULA NO. 1, SPEC., SEC. 54.
 14. MANHOLE TOPS IN UNIMPROVED RIGHTS-OF-WAY TO BE SIX INCHES ABOVE FINISHED GRADE.
 15. THE CONTRACTOR SHALL NOTIFY THE CONSTRUCTION & STORM DRAIN DIVISION BY TELEPHONE, MARSHON 9-80, EXT. 242, AT LEAST THIRTY-FOUR HOURS BEFORE STARTING ANY WORK UNDER THIS CONTRACT.
 16. STANDARD SPECIFICATIONS DATED JANUARY 1, 1950 APPLY IN THE CONSTRUCTION OF THIS PROJECT.
 17. THE CONTRACTOR SHALL PROVIDE A Baffle MADE OF 2-2" x 6" PIECES OF REDWOOD FASTENED TOGETHER.

PROFILE ALIGNMENT AND GRADE OF **P.C. 5508**
SANITARY SEWERS PAGE **1**
 TO BE CONSTRUCTED IN

J.N. 035339
TRACT No. 22180
PRIVATE CONTRACT NO. 5508

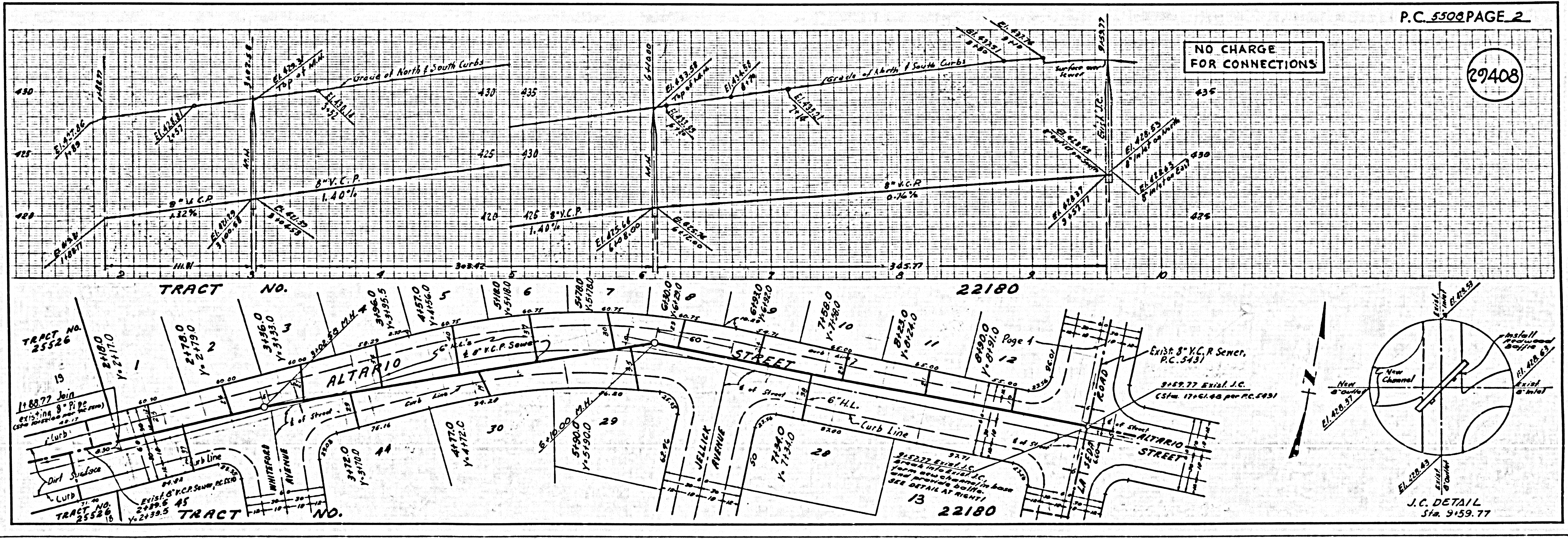
W.S. 30
 2 SHEETS, 4 PAGES (29407)
 SCALE: VERT. 1" = 4' HORIZ. 1" = 40' APRIL, 1960
 PREPARED IN THE OFFICES OF
ROSENTHAL ENGINEERING CO.

By: *Arthur J. Rosenthal*
 REG. C. E. NO. 29407
 FOR LEGEND SEE PLAN NO. S-A-54

NOTES:
 GRADES TO WHICH THIS IMPROVEMENT IS TO BE CONSTRUCTED ARE SHOWN ON PLANS AND PROFILE. GRADE PLUMBS FOR TOP OF CURB, CENTER LINE OF STREETS OR CENTER LINE OF ALLEYS ARE SHOWN BY CIRCLES ON PROFILE. AT ALL POINTS BETWEEN DESIGNATED POINTS THE GRADE SHALL BE ESTABLISHED SO AS TO CONFORM TO A STRAIGHT LINE DRAWN BETWEEN SAID DESIGNATED POINTS.
 ELEVATIONS ARE IN FEET ABOVE U.S.C. & G.S. SEA LEVEL DATUM OF 1929.
 THIS DRAWING AND THE DATA HEREON ARE HEREBY MADE A PART OF THE SPECIFICATIONS.
 BEFORE WORK CAN BE STARTED, THE CONTRACTOR MUST OBTAIN A PERMIT TO EXCAVATE IN COUNTY ENGINEER'S OFFICE FROM THE L.A. COUNTY ROAD DEPT., DISTRICT OFFICE NO. 1, AND FROM A PER. TO THE COUNTY ENGINEER, ROOM 334 PAM AMERICAN BUILDING, 335 SO. BROADWAY, SUFFICIENT TO COVER THE COST OF CONSTRUCTION INSPECTION AND RECORD PLANS.
 APPROVAL OF THIS PLAN BY THE COUNTY OF LOS ANGELES DOES NOT CONSTITUTE A REPRESENTATION AS TO THE ACCURACY OF THE LOCATION OF OR THE EXISTENCE OR NON-EXISTENCE OF ANY UNDEGROUND UTILITY PIPE, OR STRUCTURE WITHIN THE LIMITS OF THIS PROJECT. THE NOTE APPLIES TO ALL PAGES.
 IF WORK IS TO BE DONE IN A STATE HIGHWAY, A PERMIT MUST BE OBTAINED FROM THE STATE OF CALIFORNIA, DIVISION OF HIGHWAYS, THE SOUTH BRIDGE STREET.

NO CHARGE FOR CONNECTIONS
 77.79' Division 5-6-60

COUNTY OF LOS ANGELES, CALIFORNIA
 APPROVED, JOHN A. LAMBE, COUNTY ENGINEER
 APPROVED, C.B. CAMPBELL, CHIEF ENGINEER
 BY: *C.B. Campbell* (SANITATION ENGINEER) BY: *J.C. DeWitt* (OFFICE ENGINEER)
 CHECKED BY: *W.C. Poindexter* 5-6-60
 OFFICE OF COUNTY ENGINEER, REG. C. E. NO. 2446
 SUBMITTED *W.C. Poindexter* SAN. DIVISION REGIONAL ENGINEER



NO CHARGE FOR CONNECTIONS

(29408)

J.C. DETAIL
 Sta. 9+59.77

