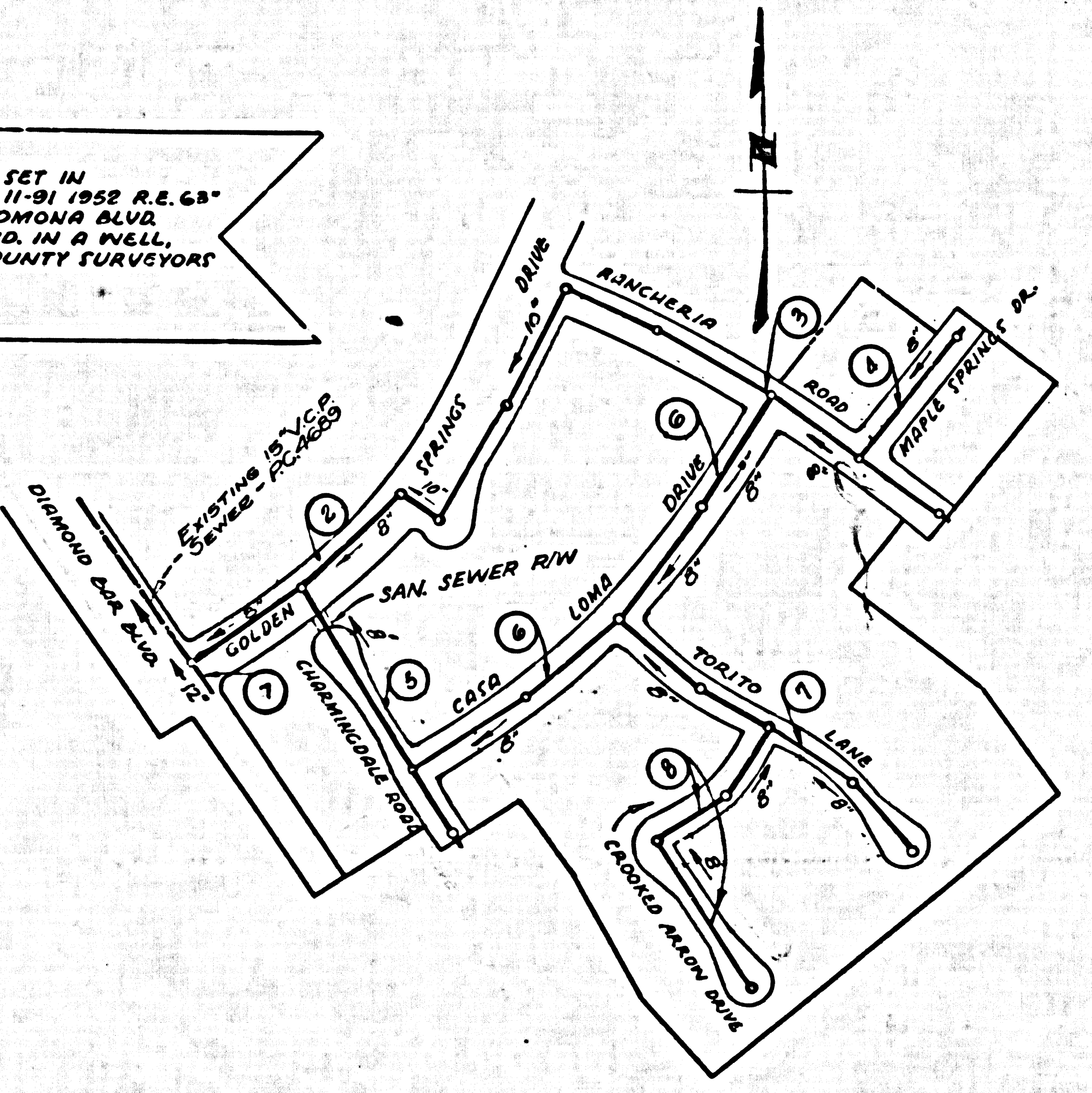


BENCH MARK
 A STANDARD COUNTY SURVEYORS MONUMENT SET IN CONCRETE 10" BELOW THE SURFACE MARKED "AM 11-91 1952 R.E. 65" AND LOCATED 8.3' WEST OF THE WEST EDGE OF POMONA BLVD. AND 8.3' EAST OF THE EAST EDGE OF VALLEY BLVD. IN A WELL, PROTECTED BY A CAST IRON COVER MARKED "COUNTY SURVEYORS MONUMENT" P.C. 1376-42
 1952 ADJUSTED ELEV. 688.191



NO CHARGE FOR CONNECTIONS
Norman W. Jones 5-20-60

SAN DIMAS BLDG. DIST. 10

- NOTES**
- PROVIDE STAKES ON THE PROPERTY LINE OR PROPERTY LINES PRODUCED AT RIGHT ANGLES TO THE SEWER LINE AT THE CENTER LINE OF EACH MANHOLE.
 - NO REPRESENTATIVE OF THE COUNTY ENGINEER WILL SURVEY OR LAY OUT ANY PORTION OF THE WORK.
 - THE OWNER OR HIS AUTHORIZED REPRESENTATIVE SHALL FURNISH THE COUNTY ENGINEER WITH GRADE SHEET AND STATIONING FOR ALL HOUSE LATERALS AND Y BRANCHES AND SHALL PROVIDE STAKES FOR THEM AT THEIR PROPER LOCATIONS WITH STATIONING PLAINLY MARKED. ANY CHANGE IN LOCATION SHALL BE REQUESTED IN WRITING BY THE OWNER OR HIS REPRESENTATIVE.
 - THE PRIVATE ENGINEER SHALL FURNISH THE HOUSE LATERAL DEPTH AT THE PROPERTY LINE BELOW THE TOP OF CURB ELEVATION FOR EACH HOUSE LATERAL ON THE GRADE SHEET.
 - NO REVISIONS SHALL BE MADE IN THESE PLANS WITHOUT THE APPROVAL OF THE COUNTY ENGINEER.
 - USE STANDARD MANHOLE FRAMES AND COVERS, S-111.
 - USE STANDARD STRENGTH PIPE EXCEPT AS NOTED.
 - USE CEMENT MORTAR OR "WEDGE-LOCK" OR "SPEED-SEAL" FOR ALL F.C.P. JOINTS PER SPECS. SECS. 34 & 41.
 - RESURFACE ALL TRENCH WITHIN PAVED AREA TO MEET L.A. COUNTY ROAD DEPT. OR CALIF. STATE HIGHWAY REQUIREMENTS IN ACCORDANCE WITH PERMITS.
 - BRIDGE FOUR FEET OF SEWER AT POINTS OF INTERFERENCE WITH POLES, CASE M. S-172.
 - HOUSE LATERALS TO BE CONSTRUCTED WITH INVERTS AT PROPERTY LINE 6 FEET BELOW CURB GRADE.
 - ALL STRUCTURES SHALL BE BRICK SEWER STRUCTURES, S-104.
 - FOR ALLOWABLE LEAKAGE TEST USE FORMULA NO. 1, SPECS. SEC. 34.
 - MANHOLE TOPS IN UNIMPROVED RIGHTS-OF-WAY TO BE SIX INCH. ABOVE FINISHED GRADE.
 - THE CONTRACTOR SHALL NOTIFY THE CONSTRUCTION & STORM DRAIN DIVISION BY TELEPHONE, MADISON 5-477, EXT. 342, AT LEAST TWENTY-FOUR HOURS BEFORE STARTING ANY WORK UNDER THIS CONTRACT.
 - STANDARD SPECIFICATIONS DATED JAN. 1, 1960 APPLY IN THE CONSTRUCTION OF THIS PROJECT.
 - NO CONSTRUCTION WILL BE PERMITTED IN FILLED AREAS UNLESS ACCEPTABLE CERTIFICATION IS SUBMITTED TO THE CONSTRUCTION DIVISION OF THE COUNTY ENGINEER'S DEPARTMENT THAT RELATIVE COMPACTION IS GREATER THAN 80%.
 - a. IF COMPACTION IS GREATER THAN 90% NEITHER CEADLING NOR SPECIAL MANHOLE BASES WILL BE REQUIRED. HOWEVER, JOINT COMPOUND OR "WEDGE-LOCK" OR "SPEED-SEAL" MUST BE SUBSTITUTED FOR CEMENT MORTAR FOR ALL JOINTS IN FILLED AREAS.
 - b. IF COMPACTION IS LESS THAN 90% THE SEWER MUST BE CEADLED AS SHOWN ON THE PLANS PER S-8-166.

PROFILE ALIGNMENT AND GRADE OF **P.C. 5512**
SANITARY SEWERS PAGE 1
 TO BE CONSTRUCTED IN **J.N. 0353.42**

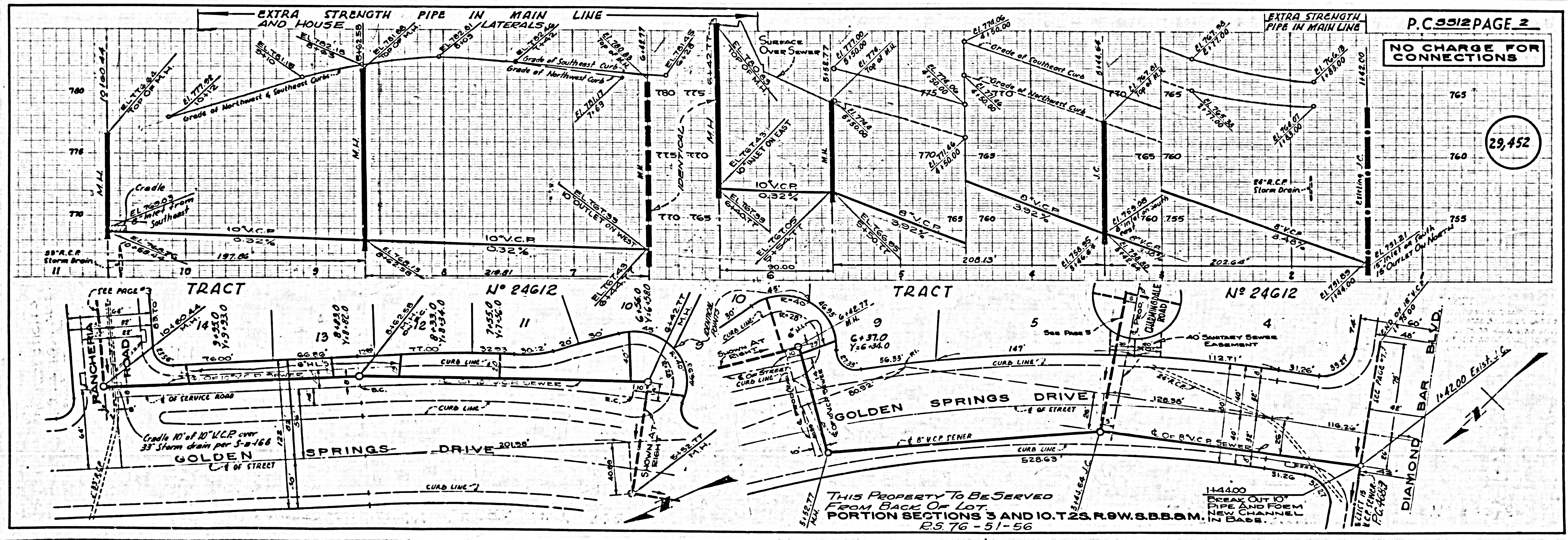
TRACT No 24612
PRIVATE CONTRACT NO. 5512

W.S. 39
 4 SHEETS; 8 PAGES
 SCALE: VERT. 1" = 4'
 HORIZ. 1" = 40'
APRIL, 1960
 PREPARED IN THE OFFICES OF
BAKER, PAFFORD AND ASSOC.
 1638 WEST FIFTH AVENUE
 POMONA, CALIFORNIA
 BY: *William B. Barrett*
 REG. C. E. NO. 9623

29,451

NOTE:
 GRADES TO WHICH THIS IMPROVEMENT IS TO BE CONSTRUCTED ARE SHOWN ON PLANS AND PROFILES. GRADE POINTS FOR TOP OF CURB, CENTER LINE OF STREETS, OR CENTER LINE OF ALLEYS ARE SHOWN BY CIRCLES ON PROFILES. AT ALL POINTS BETWEEN DESIGNATED POINTS THE GRADE SHALL BE ESTABLISHED SO AS TO CONFORM TO A STRAIGHT LINE DRAWN BETWEEN SAID DESIGNATED POINTS.
 ELEVATIONS ARE IN FEET ABOVE U.S.C. & G.S. SEA LEVEL DATUM OF 1929.
 THIS DRAWING AND THE DATA HEREON ARE HEREBY MADE A PART OF THE SPECIFICATIONS.
 WORK SHALL BE CONSTRUCTED ACCORDING TO SPECIFICATIONS ON FILE IN THE OFFICE OF THE COUNTY ENGINEER AND SHALL BE PROSECUTED ONLY IN THE PRESENCE OF THE COUNTY ENGINEER.
 BEFORE WORK CAN BE STARTED, THE CONTRACTOR MUST OBTAIN A PERMIT TO EXCAVATE IN COUNTY STREETS FROM THE L.A. COUNTY ROAD DEPT., DISTRICT OFFICE NO. 1, AND PAY APPEE TO THE COUNTY ENGINEER ROOM 324 PAV. AMERICAN BUILDING, 344 SO. INGLEWOOD AVENUE TO COVER THE COST OF CONSTRUCTION INSPECTION AND RECORD PLANS.
 APPROVAL OF THIS PLAN BY THE COUNTY OF LOS ANGELES DOES NOT CONSTITUTE A REPRESENTATION AS TO THE ACCURACY OF THE LOCATION OR OF THE EXISTENCE OR NON-EXISTENCE OF ANY UNDERGROUND UTILITY PIPE, OR STRUCTURE WITHIN THE LIMITS OF THIS PROJECT. THIS NOTE APPLIES TO ALL PARTS OF THE PROJECT.
 IF WORK IS TO BE DONE IN A STATE HIGHWAY, A PERMIT MUST BE OBTAINED FROM THE STATE OF CALIFORNIA, DIVISION OF HIGHWAYS, 128 SOUTH SPRING STREET.

COUNTY OF LOS ANGELES, CALIFORNIA
 APPROVED, JOHN A. LAMBE, COUNTY ENGINEER APPROVED, G.R. CAMPION, CHIEF ENGINEER
 (REG. SAN. ENGR. NO. 21)
 BY: *C.E. Barrett* BY: *J. Westerman*
 COUNTY SANITATION ENGINEER COUNTY ENGINEER
 CHECKED BY: *J.K. Child* 5-23-60
 OFFICE OF COUNTY ENGINEER, REG. C. E. NO. 2446
 SUBMITTED *W.C. Prindler*
 SAN DIMAS REGIONAL ENGINEER



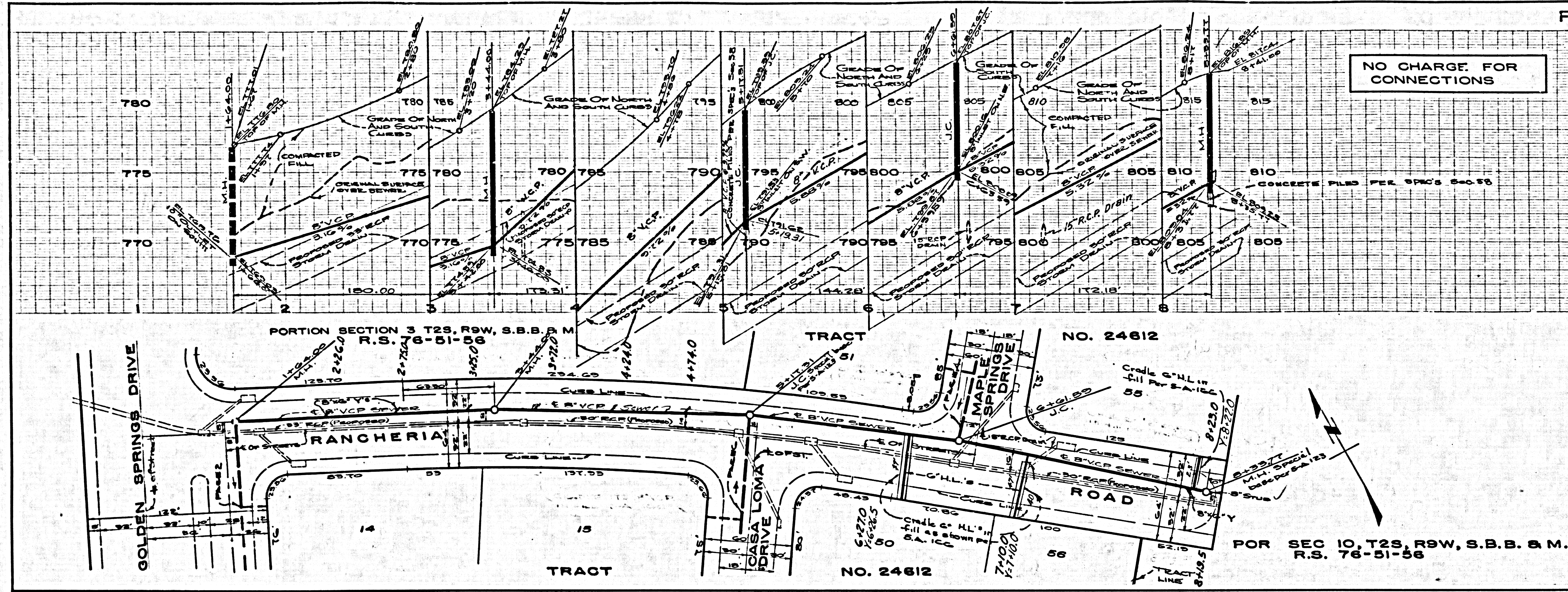
NO CHARGE FOR CONNECTIONS

29,452

P.C. 5512 PAGE 2

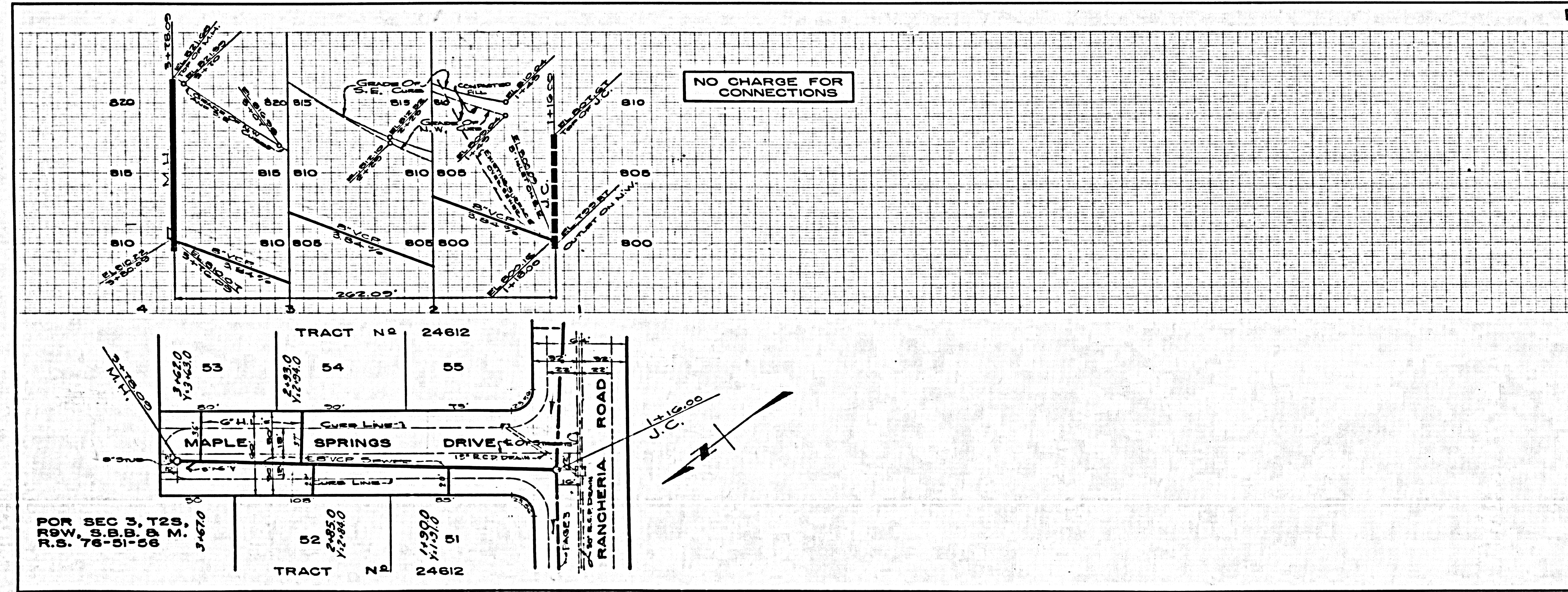
NO CHARGE FOR CONNECTIONS

29,453

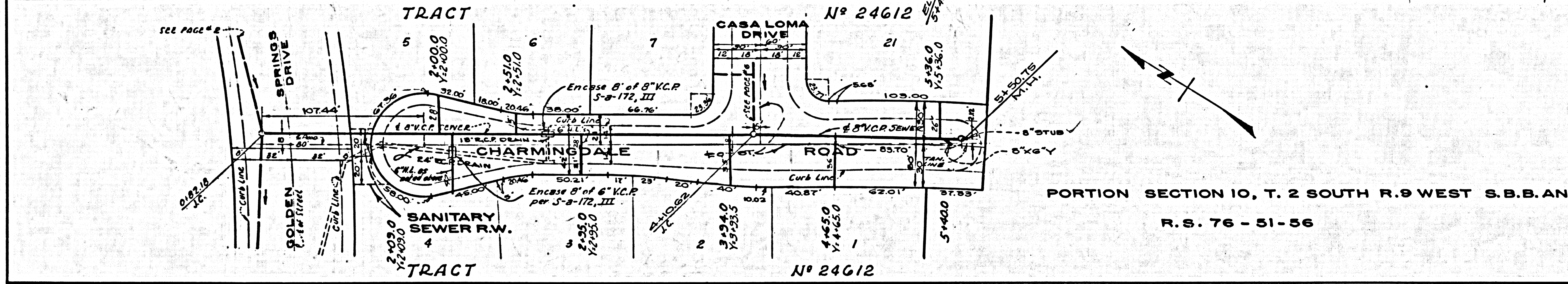
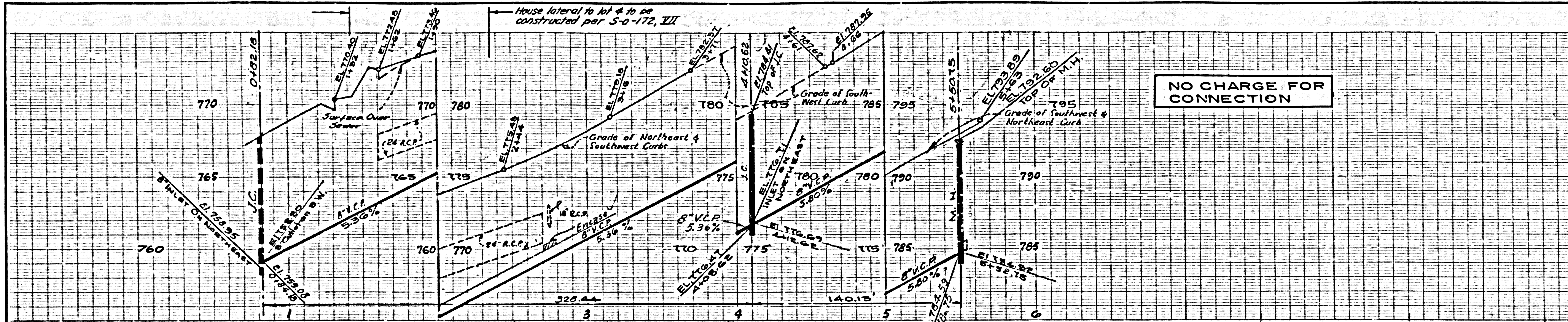


NO CHARGE FOR CONNECTIONS

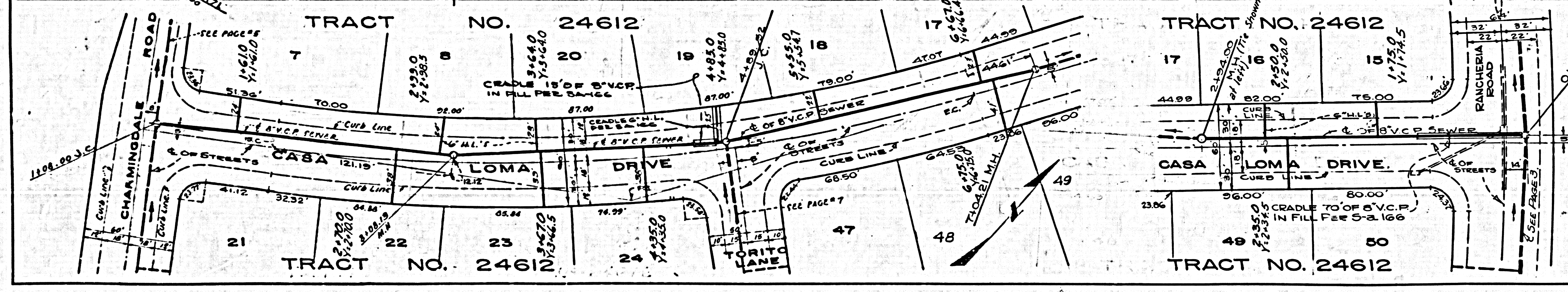
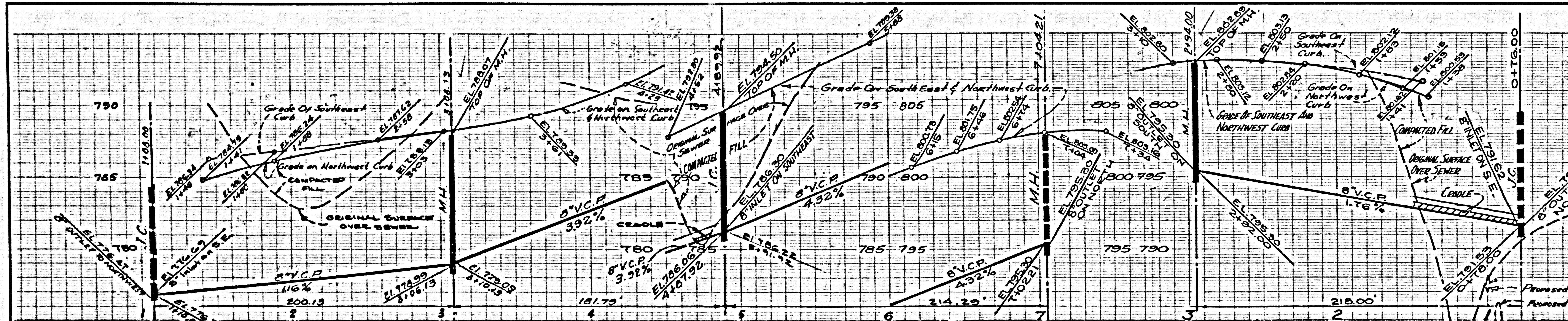
23,454



U.S.G. 100-000 GAL. BLUE PRINT SHEET NO. 2



PORTION SECTION 10, T. 2 SOUTH R. 9 WEST S.B.B. AND M.
R.S. 76 - 51 - 56



SEE PAGE 7

