

LA PUENTE BLDG. DIST. NO. 2.02

PROFILE ALIGNMENT AND GRADE OF P.C. 5513
 SANITARY SEWERS PAGE 1

TO BE CONSTRUCTED IN

GLENDDORA AVENUE

PRIVATE CONTRACT NO. 5513

W.S. 38
 1 SHEET OF 2 PAGES

SCALE: VERT. 1"=4'
 HORIZ. 1"=40' APRIL, 1960
 PREPARED IN THE OFFICES OF

29,544

By: *J. A. Cooper*
 REG. C. E. NO. 3793

FOR LEGEND SEE PLAN NO. S-A-44

- NOTES:
1. PROVIDE STAKES ON THE PROPERTY LINE OR PROPERTY LINES PRODUCED AT RIGHT ANGLES TO THE SEWER LINE AT THE CENTER LINE OF EACH MANHOLE.
 2. NO REPRESENTATIVE OF THE CITY ENGINEER WILL SURVEY OR LAY OUT ANY PORTION OF THE WORK.
 3. THE OWNER OR HIS AUTHORIZED REPRESENTATIVE SHALL FURNISH THE CITY ENGINEER WITH GRADE SHEETS AND STATIONING FOR ALL HOUSE LATERALS AND Y BRANCHES AND SHALL PROVIDE STAKES FOR THEM AT THEIR PROPER LOCATIONS WITH STATIONING PLAINLY MARKED. ANY CHANGE IN LOCATION SHALL BE REQUESTED IN WRITING BY THE OWNER OR HIS REPRESENTATIVE.
 4. THE PRIVATE ENGINEER SHALL FURNISH THE HOUSE LATERAL DEPTH AT THE PROPERTY LINE BELOW THE TOP OF CURB ELEVATION FOR EACH HOUSE LATERAL ON THE GRADE SHEET.
 5. NO REVISIONS SHALL BE MADE IN THESE PLANS WITHOUT THE APPROVAL OF THE CITY ENGINEER.
 6. USE STANDARD MANHOLE FRAMES AND COVERS, S-117.
 7. USE EXTRA STRENGTH PIPE EXCEPT AS NOTED.
 8. USE CEMENT MORTAR OR "WEDGE-LOCK" OR "SPEED-SEAL" FOR ALL V.C.P. JOINTS PER SPEC'S, SECS. 36 & 41.
 9. RESURFACE ALL TRENCH WITHIN PAVED AREA TO MEET L.A. COUNTY ROAD DEPT. OR CALIF. STATE HIGHWAY REQUIREMENTS IN ACCORDANCE WITH PERMITS.
 10. ENCASE FOUR FEET OF SEWER AT POINTS OF INTERFERENCE WITH POLES, CASE III, S-172.
 11. HOUSE LATERALS TO BE CONSTRUCTED WITH INVERTS AT PROPERTY LINE 6 FEET BELOW CURB GRADE EXCEPT AS NOTED.
 12. ALL STRUCTURES SHALL BE BRICK SEWER STRUCTURES, S-104.
 13. FOR ALLOWABLE LEAKAGE TEST USE FORMULA NO. 1 SPEC'S, SEC. 54.
 14. MANHOLE TOPS IN UNIMPROVED RIGHTS-OF-WAY TO BE SIX INCHES ABOVE FINISHED GRADE.
 15. THE CONTRACTOR SHALL NOTIFY THE CONSTRUCTION & STORM DRAIN DIVISION BY TELEPHONE, MADISON 5-4747, EXT. 342, AT LEAST TWENTY-FOUR HOURS BEFORE STARTING ANY WORK UNDER THIS CONTRACT.

NO CHARGE FOR CONNECTIONS
 77 775 Valencia 4-27-60

B.M. 56.1107
 L. & T. 15'± WEST OF CURB RET. AT
 N.W. COR. CADWELL ST. & ELLIOT
 AVE. EL. = 324.228

CITY OF LA PUENTE

APPROVED: *Richard D. ...*
 CITY MANAGER

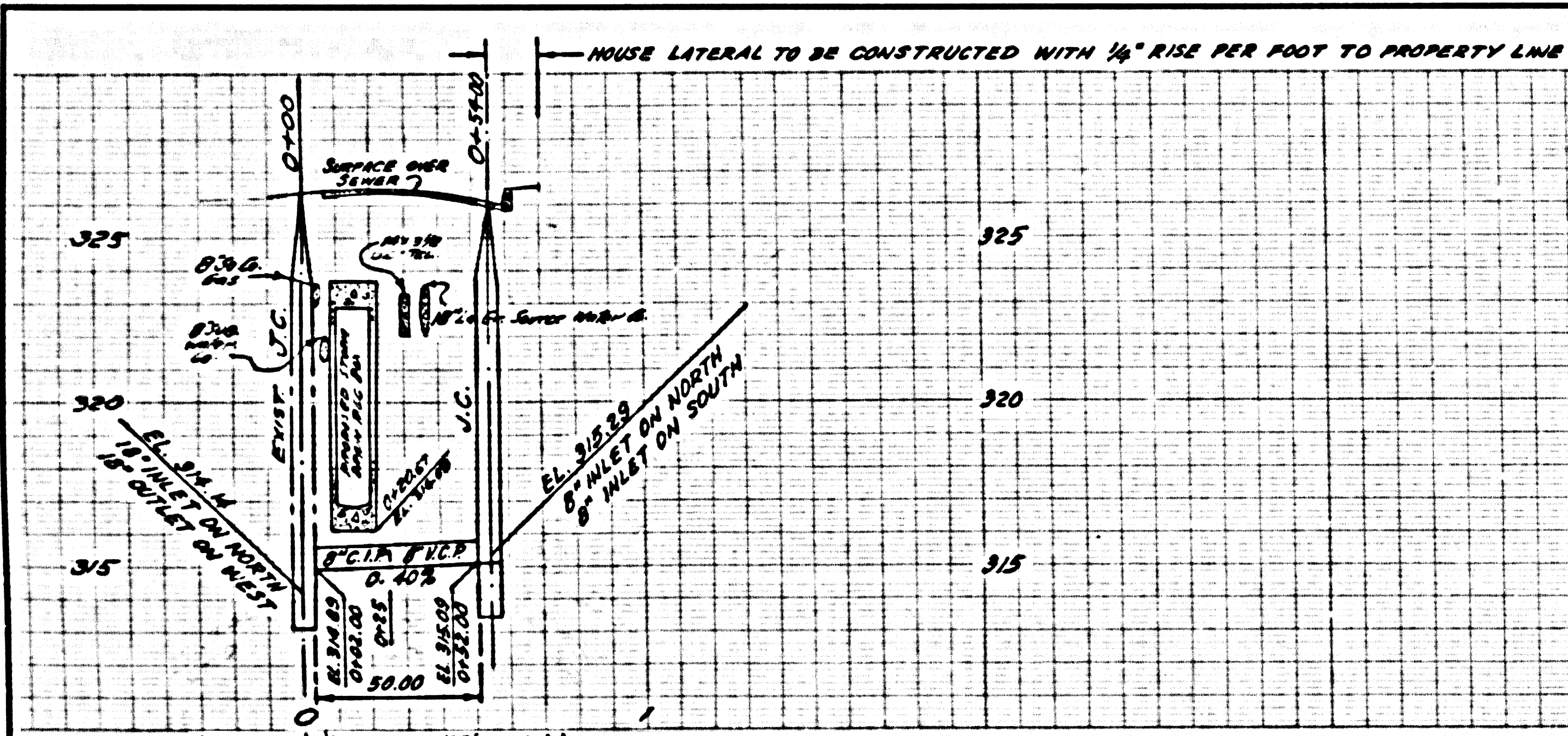
CITY OF LA PUENTE, CALIFORNIA

APPROVED, JOHN A. LAMBIE, CITY ENGINEER APPROVED, C.E. COMPTON, CHIEF ENGINEER

BY: *J. A. Cooper* DIST. SANITATION ENGINEER BY: *J. A. Cooper* OFFICE ENGINEER

CHECKED BY: *Stu ...* 4-29-60
 OFFICE OF CITY ENGINEER, REG. C. E. NO. 3406

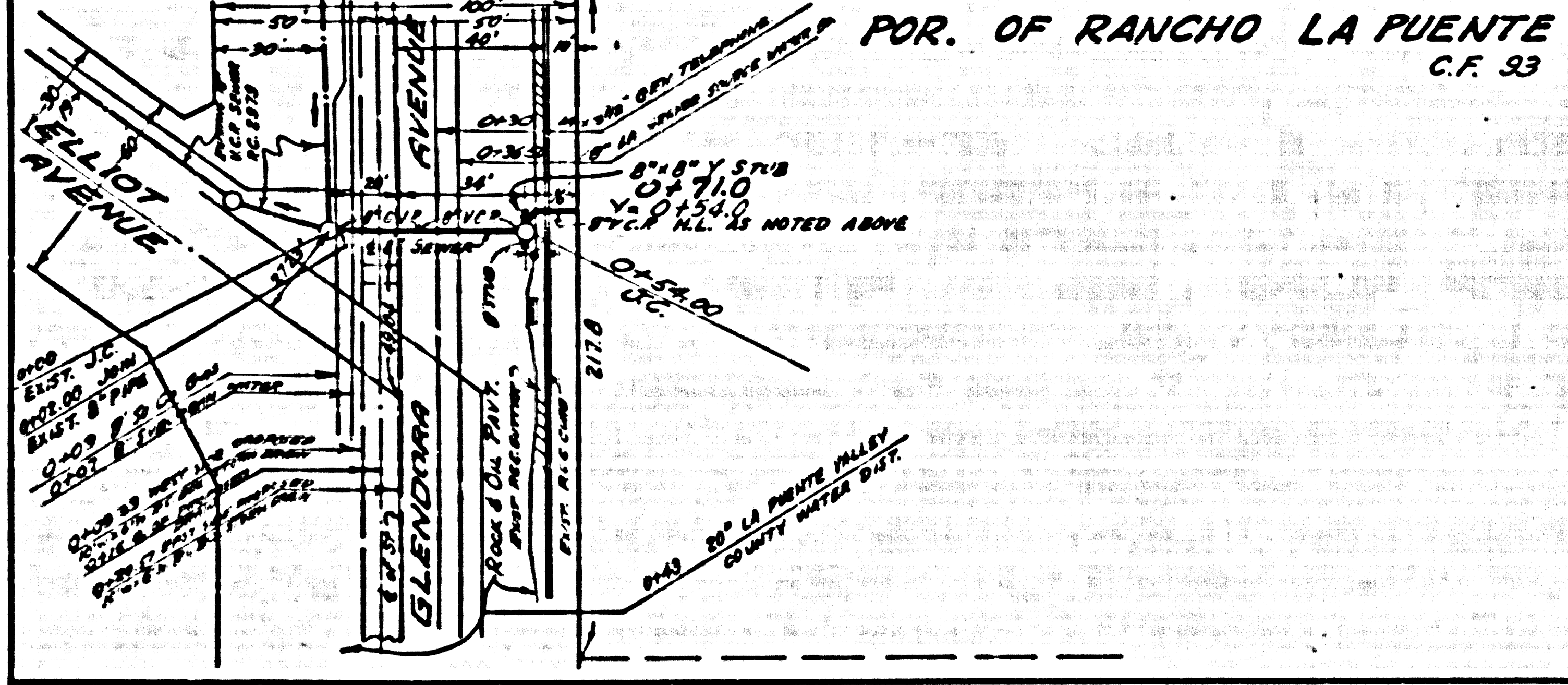
SUBMITTED: *W.C. Reinhardt*
 SAN DIMAS REGIONAL ENGINEER



P.C. 5513 PAGE 2

NO CHARGE FOR CONNECTIONS

29,545



B.M. 56.1107
 L. & T. 15'± WEST OF CURB RET. AT
 N.W. COR. CADWELL ST. & ELLIOT
 AVE. EL. = 324.228

