

LOMITA BLDG. DIST. NO. 7.1

PROFILE ALIGNMENT AND GRADE OF **P.C. 5515**
SANITARY SEWERS PAGE 1
 TO BE CONSTRUCTED IN **J.N. 0353.44**

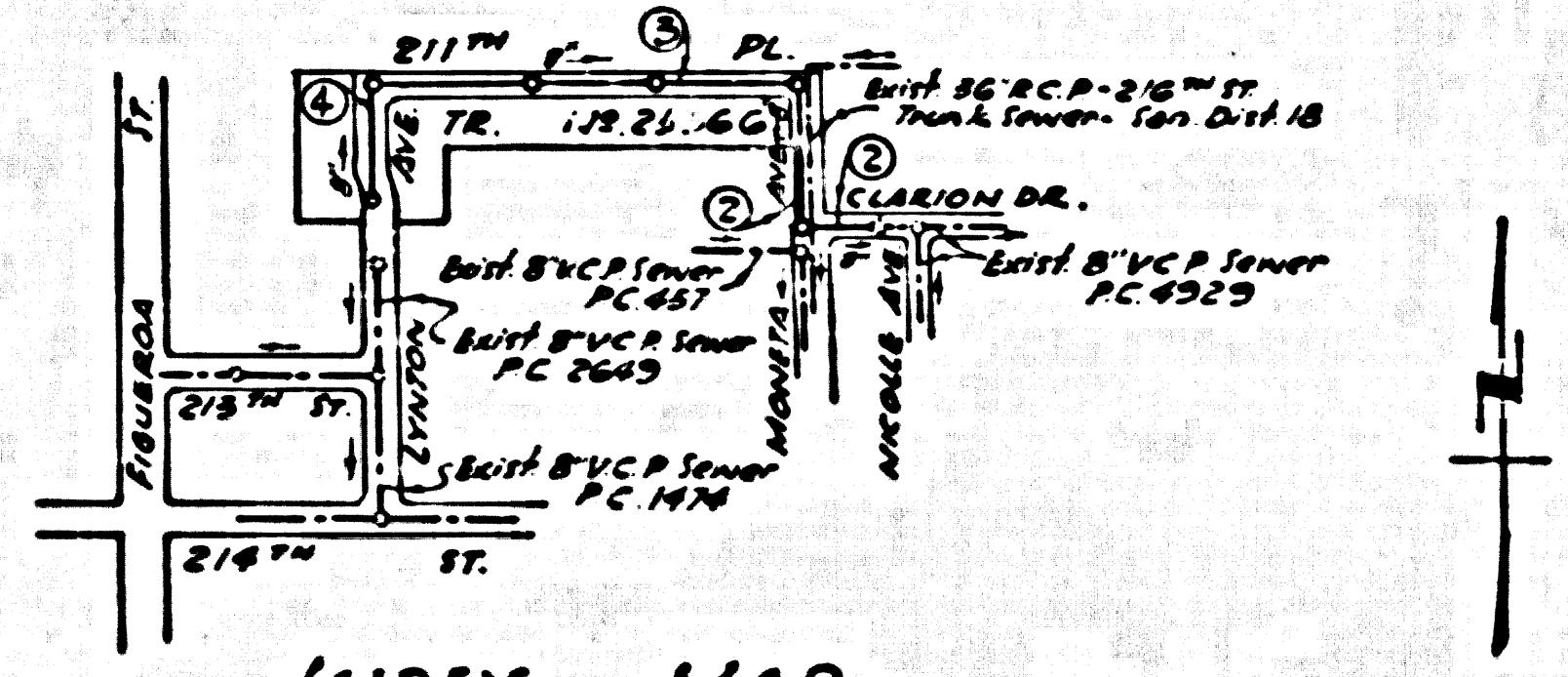
TRACT No. 25566
PRIVATE CONTRACT NO. 5515

W.S. 28
 2 SHEETS; 4 PAGES
 SCALE: 1" = 40' APRIL, 1960
 PREPARED IN THE OFFICES OF

GILBERT ENGINEERING CO.
 REG. C. E. NO. 1227
 FOR LEGEND SEE PLAN NO. S-A-64

- NOTES:**
1. PROVIDE STAKES ON THE PROPERTY LINE OR PROPERTY LINES PRODUCED AT RIGHT ANGLES TO THE SEWER LINE AT THE CENTER LINE OF EACH MANHOLE.
 2. NO REPRESENTATIVE OF THE COUNTY ENGINEER WILL SURVEY OR LAY OUT ANY PORTION OF THE WORK.
 3. THE OWNER OR HIS AUTHORIZED REPRESENTATIVE SHALL FURNISH THE COUNTY ENGINEER WITH GRADE SHEETS AND STATIONING FOR ALL HOUSE LATERALS AND Y BRANCHES AND SHALL PROVIDE STAKES FOR THEM AT THEIR PROPER LOCATIONS WITH STATIONING PLAINLY MARKED. ANY CHANGE IN LOCATION SHALL BE REQUESTED IN WRITING BY THE OWNER OR HIS REPRESENTATIVE.
 4. THE PRIVATE ENGINEER SHALL FURNISH THE HOUSE LATERAL DEPTH AT THE PROPERTY LINE BELOW THE TOP OF CURB ELEVATION FOR EACH HOUSE LATERAL ON THE GRADE SHEET.
 5. NO REVISIONS SHALL BE MADE IN THESE PLANS WITHOUT THE APPROVAL OF THE COUNTY ENGINEER.
 6. USE STANDARD MANHOLE FRAMES AND COVERS, S-117, 24" DIA. - 48" HIGH.
 7. USE STANDARD STRENGTH PIPE EXCEPT AS NOTED.
 8. USE CEMENT MORTAR OR "WEDG-LOCK" OR "SPEED-SEAL" FOR ALL V.C.P. JOINTS PER SPECS. SECS. 16 & 17.
 9. RESURFACE ALL TRENCH WITHIN PAVED AREA TO MEET L.A. COUNTY ROAD DEPT. OR CALIF. STATE HIGHWAY REQUIREMENTS IN ACCORDANCE WITH PERMITS.
 10. ENCASE FOUR FEET OF SEWER AT POINTS OF INTERFERENCE WITH POLES, CASE 11, S-172.
 11. HOUSE LATERALS TO BE CONSTRUCTED WITH $\frac{1}{2}$ RATE PER FOOT TO PROPERTY LINE. EXCEPT AS NOTED.
 12. ALL STRUCTURES SHALL BE BRICK SEWER STRUCTURES, S-104, 24" DIA. - 48" HIGH.
 13. FOR ALLOWABLE LEAKAGE TEST USE FORMULA NO. 1, SPECS. SEC. 14.
 14. MANHOLE DEPTHS IN UNPAVED AREAS SHALL BE 48" HIGH - 48" DIA. - 48" HIGH - 48" DIA. - 48" HIGH.
 15. THE CONTRACTOR SHALL NOTIFY THE CONSTRUCTION & STORM DRAIN DIVISION BY TELEPHONE, MADISON 9-6100, EXT. 302, AT LEAST TWENTY-FOUR HOURS BEFORE STARTING ANY WORK UNDER THIS CONTRACT.
 16. SPECIFICATIONS DATED JAN. 1, 1960 APPLY IN THE CONSTRUCTION OF THIS PROJECT.

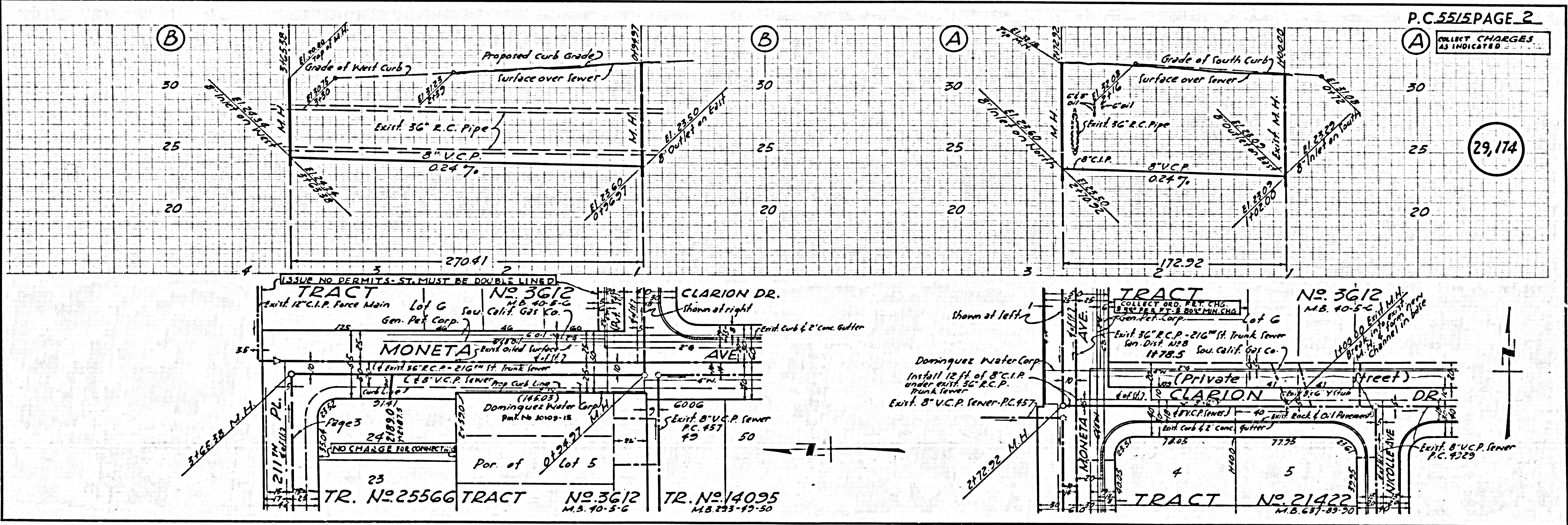
B.M. 5Y3314 Elev. 28828
 L. & T. 3' 13" West & Int.
 213' 11" S. E. Main St. Intersection



INDEX MAP
 P.C. 5515 TRACT No. 25566
 SCALE: 1"=600'
 Note: Figure in circle indicates page number

COLLECT CHARGES
 AS INDICATED
 L. Carter 5-9-60

COUNTY OF LOS ANGELES, CALIFORNIA
 APPROVED, JOHN A. LAMBLE COUNTY ENGINEER
 APPROVED, A. M. RAWN, CHIEF ENGINEER
 CO. ENG. DIST. NO. 2
 BY *L. Hughes* LAMINATION ENGINEER
 BY *A. P. ...* OFFICE ENGINEER
 CHECKED BY *A. F. ...* 5-11-60
 OFFICE OF COUNTY ENGINEER, REG. C. E. NO. 11636
 SUBMITTED *John C. Lansing*
 PASO-VERDES-CENTINELA VALLEY REGIONAL ENGINEER, REG. C. E. NO. 6091



P.C. 5515 PAGE 2
COLLECT CHARGES
 AS INDICATED

29,174

