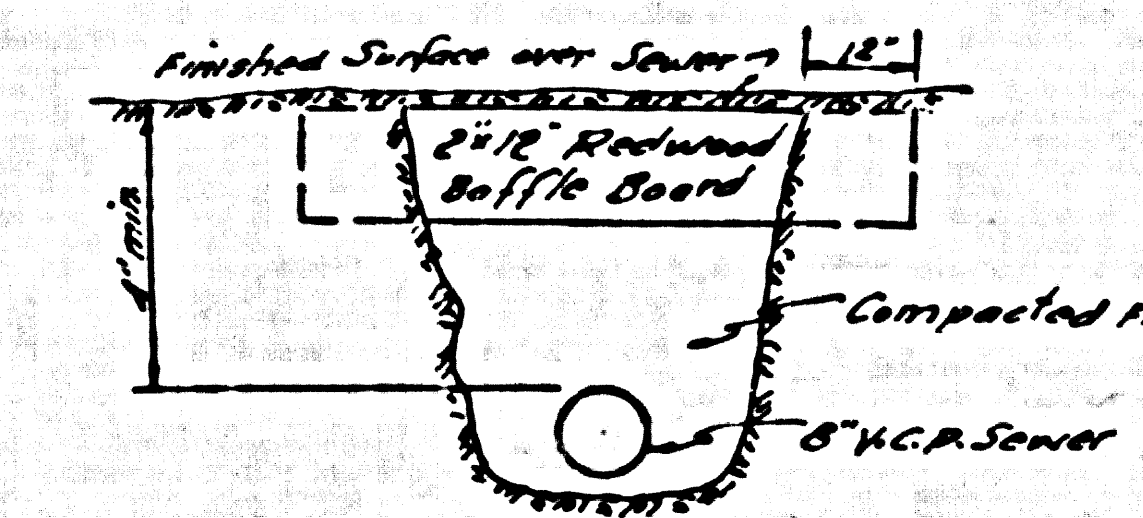
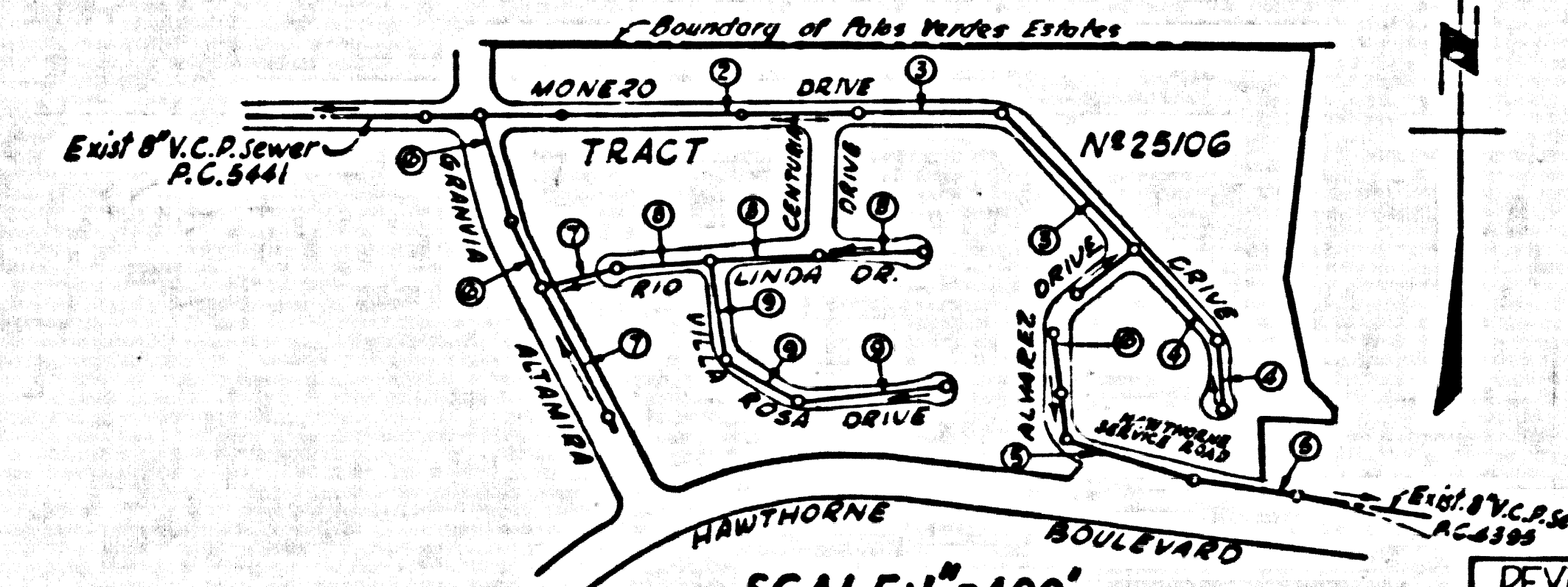


BENCH MARK:
 B.M. 36-2 (U.S.C.E.G.S. B.M.Q.-786) (U.S. 4127)
 North of Ave. and Palms Verde Drive North, N.E. Corner,
 46.2' N.W. of Approx. E. of Palms Verde Drive North and
 45.5' S.E. of Approx. E. of Marlboro Ave. and 1.2' N.E.
 of a White Wooden Witness Post, set in top of a Conc. Post
 Flush with Surface, A Stk. Disc Stamped "Q 786-1946,
 1953 Adj. 0.065" to All Elev. shown on this plan to be
 on 1953 Adj.



- NOTES**
1. Each end of Baffle Board will extend one foot into undisturbed ground.
 2. The upper layer of backfill to be one foot minimum top soil. Topsoil shall be dumped on place & planted with roughed 1/2\"/>



NOTE: Sewers not Required to serve Lots 21 & 22. Approval for use of Cesspool and Septic Tank to be obtained from Dept. of Building and Safety.

REVISION: Lowered Curb & Sewer Grades on Page 3 & Page 4, Monero Drive from Centuria Drive E'ly and Alvaraz Drive from Monero Drive 193' Southly.
 Approved Charles J. Smith
 Chief of County Engineer

NO CHARGE FOR CONNECTIONS
 C. Smith 9-15-61

LOMITA BLDG. DIST. NO. 12

- NOTES**
1. PROVIDE STAKES ON THE PROPERTY LINE OR PROPERTY LINES PRODUCED AT RIGHT ANGLES TO THE SEWER LINE AT THE CENTER LINE OF EACH MANHOLE.
 2. NO REPRESENTATIVE OF THE COUNTY ENGINEER WILL SURVEY OR LAY OUT ANY PORTION OF THE WORK.
 3. THE OWNER OR HIS AUTHORIZED REPRESENTATIVE SHALL FURNISH THE COUNTY ENGINEER WITH GRADE SHEETS AND STATIONING FOR ALL HOUSE LATERALS AND T BRANCHES AND SHALL PROVIDE STAKES FOR THEM AT THEIR PROPER LOCATIONS WITH STATIONING PLAINLY MARKED. ANY CHANGE IN LOCATION SHALL BE REQUESTED IN WRITING BY THE OWNER OR HIS REPRESENTATIVE.
 4. THE PRIVATE ENGINEER SHALL FURNISH THE HOUSE LATERAL DEPTH AT THE PROPERTY LINE BELOW THE TOP OF CURB ELEVATION FOR EACH HOUSE LATERAL ON THE GRADE SHEET.
 5. NO REVISIONS SHALL BE MADE IN THESE PLANS WITHOUT THE APPROVAL OF THE COUNTY ENGINEER.
 6. USE STANDARD MANHOLE FRAMES AND COVERS, 5-117, 1\"/>

ENGINEERING SERVICE CORPORATION
 1127 W. WASHINGTON BLVD.
 LOS ANGELES 15, CALIF. RI. 9-7281

REVISIONS		TRACED BY
		J.A. & C.F.
		DES'G'D BY D.D.H.
		CK'D BY A.A.M.
		SUBMITTED

SUB STRUCTURES OK'D

W. O. NO.	DWG. NO.	DATE	SCALE	L.B.	P.B.
6681-151	TR 25106	Feb 1960	As noted	L.L.	

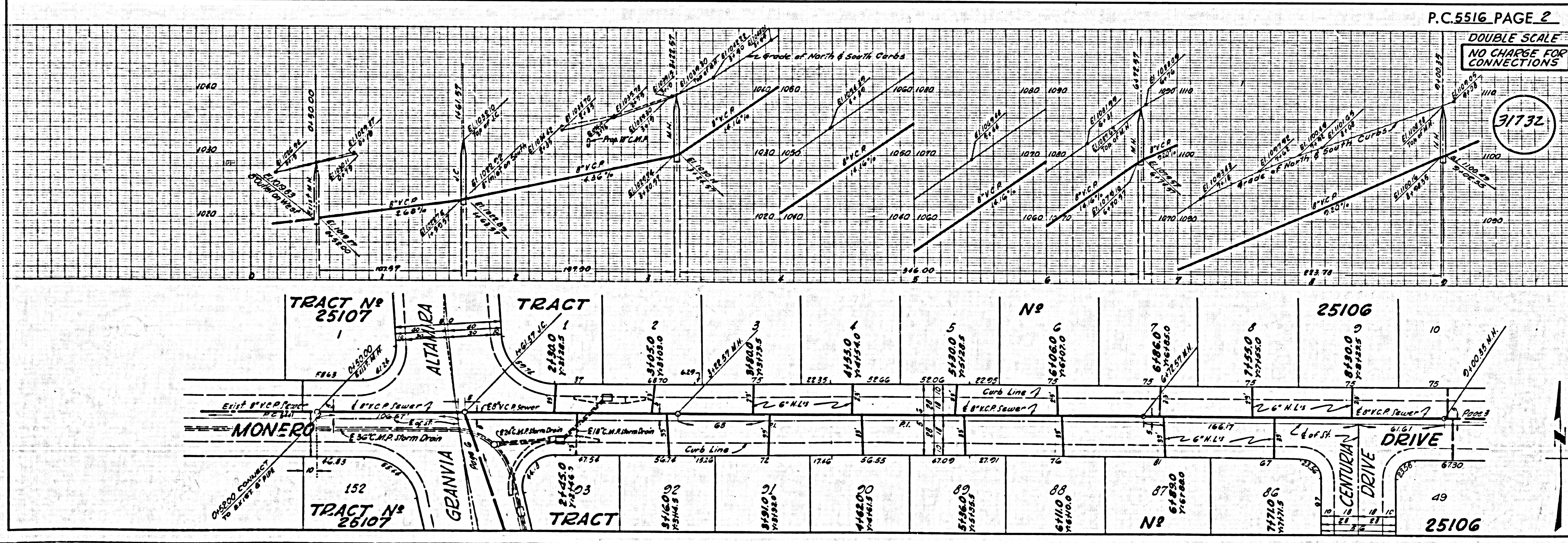
PROFILE ALIGNMENT AND GRADE OF **P.C. 5516**
SANITARY SEWERS PAGE 1
 TO BE CONSTRUCTED IN
TRACT N° 25106 J.N. 0353.45

PRIVATE CONTRACT NO. 5516
 W.S. 27
 5 SHEETS, 9 PAGES
 SCALE: VERT. 1" = 4' HORIZ. 1" = 40'
 AUGUST, 1961
 PREPARED IN THE OFFICES OF
ENGINEERING SERVICE CORPORATION
 By: *C. J. Smith*
 REG. E. NO. 3682
 FOR LEGEND SEE PLAN NO. S-A-64

31731

NOTE:
 GRADES TO WHICH THIS IMPROVEMENT IS TO BE CONSTRUCTED ARE SHOWN ON PLANS AND PROFILES. GRADE POINTS FOR TOP OF CURB, CENTER LINE OF STREETS, OR CENTER LINE OF ALLEYS ARE SHOWN BY CIRCLES ON PROFILES AT ALL POINTS BETWEEN DESIGNATED POINTS THE GRADE SHALL BE ESTABLISHED SO AS TO CONFORM TO A STRAIGHT LINE DRAWN BETWEEN SAID DESIGNATED POINTS.
 ELEVATIONS ARE IN FEET ABOVE U.S.C. & G.S. SEA LEVEL DATUM OF 1929.
 THIS DRAWING AND THE DATA HEREON ARE HEREBY MADE A PART OF THE SPECIFICATIONS.
 BEFORE WORK CAN BE STARTED, THE CONTRACTOR MUST OBTAIN A PERMIT TO EXCAVATE IN COUNTY STREETS FROM THE L.A. COUNTY ROAD DEPT., DISTRICT OFFICE NO. 3, AND PAY A FEE TO THE COUNTY ENGINEER, ROOM 300 COUNTY ENGINEER BLDG., 400 N. WEND ST., SUFFICIENT TO COVER THE COST OF CONSTRUCTION INSPECTION AND RECORD PLANS.
 APPROVAL OF THIS PLAN BY THE COUNTY OF LOS ANGELES DOES NOT CONSTITUTE A REPRESENTATION AS TO THE ACCURACY OF THE LOCATION OF OR THE EXISTENCE OR NON-EXISTENCE OF ANY UNDERGROUND UTILITY PIPE OR STRUCTURE WITHIN THE LIMITS OF THIS PROJECT. THIS NOTE APPLIES TO ALL PAGES.
 IF WORK IS TO BE DONE IN A STATE HIGHWAY, A PERMIT MUST BE OBTAINED FROM THE STATE OF CALIFORNIA, DIVISION OF HIGHWAYS, 130 SOUTH SPRING STREET.

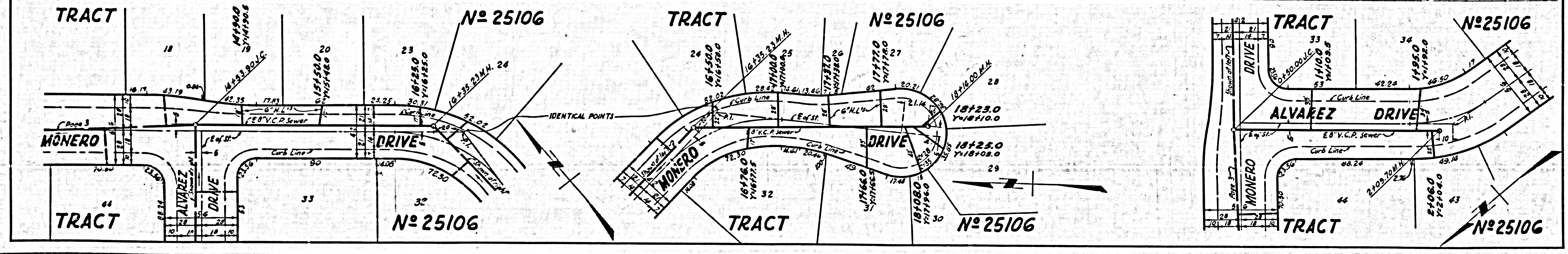
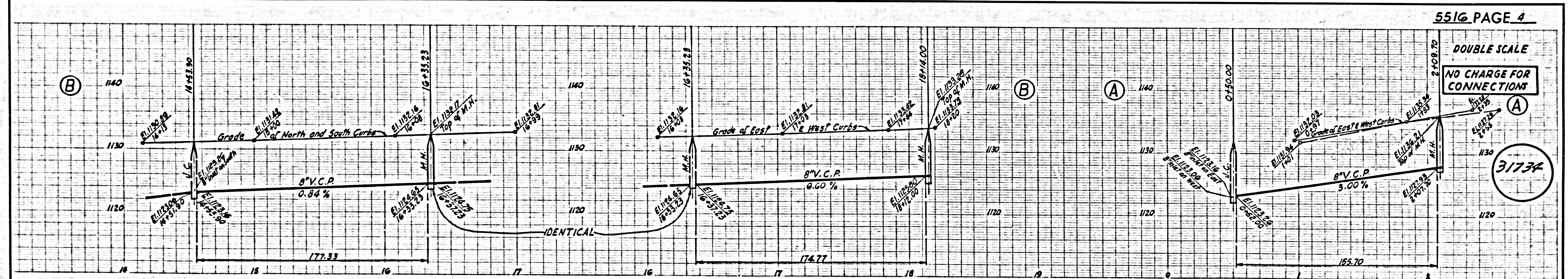
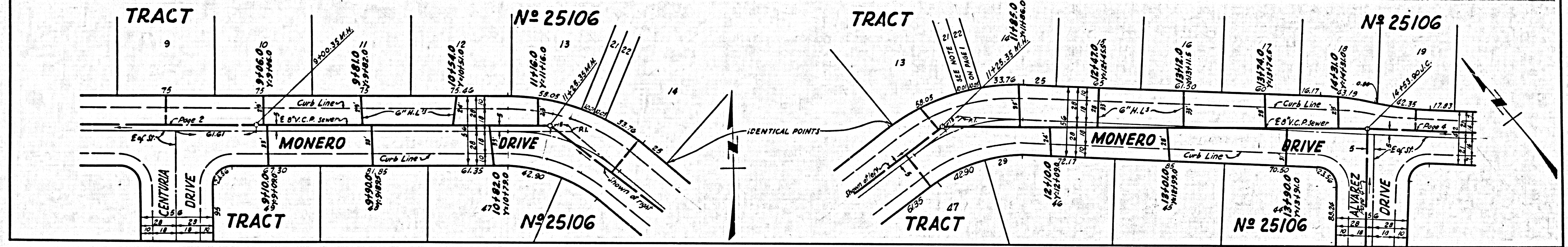
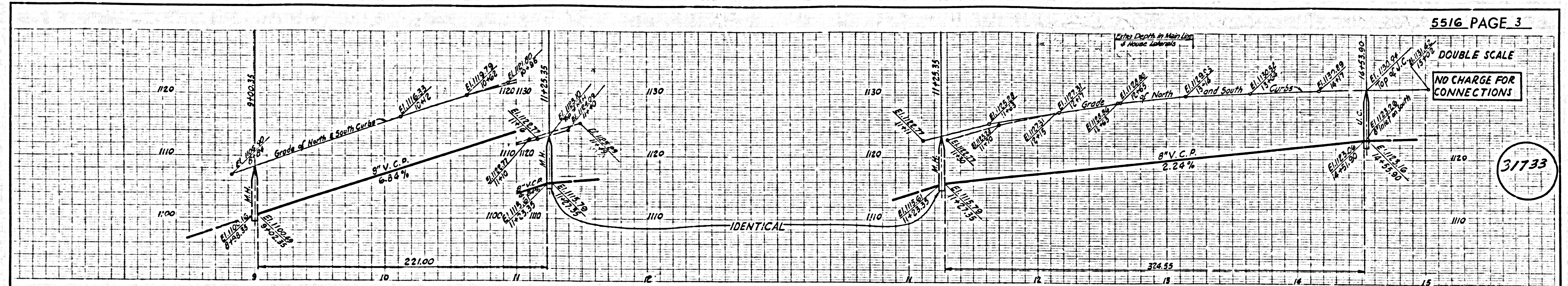
COUNTY OF LOS ANGELES, CALIFORNIA
 APPROVED, JOHN A. LAMBIE, COUNTY ENGINEER
 APPROVED, AR PARKMAN, CHIEF ENGINEER
 CO. SAN. DIST. NO. 5
 BY: *C. J. Smith* ASST. SANITATION ENGINEER
 BY: *M. Mathews* OFFICE ENGINEER
 CHECKED BY: *W. W. Duda* 9-18-61
 OFFICE OF COUNTY ENGINEER, REG. C. E. NO. 2486
 SUBMITTED: *Jack C. Lansing*
 PALMS VERDES-CENTINELA VALLEY REGIONAL ENGINEER



P.C. 5516 PAGE 2

DOUBLE SCALE
NO CHARGE FOR CONNECTIONS

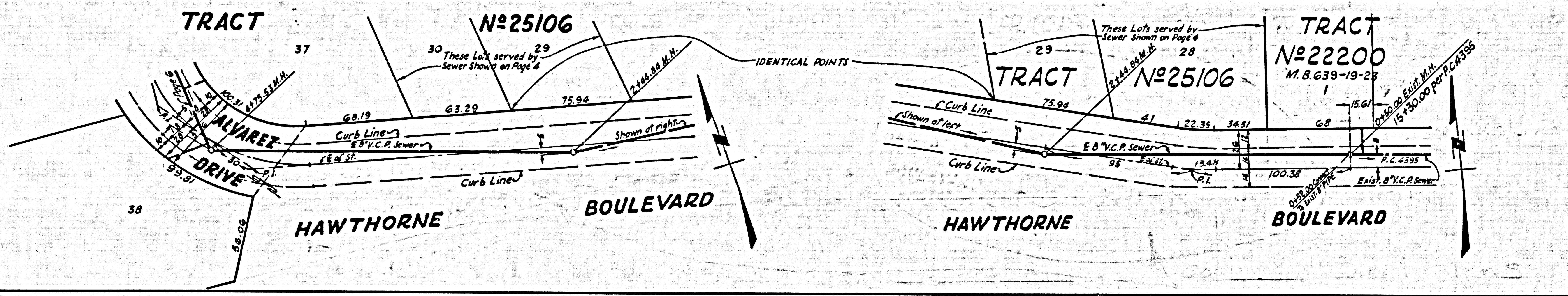
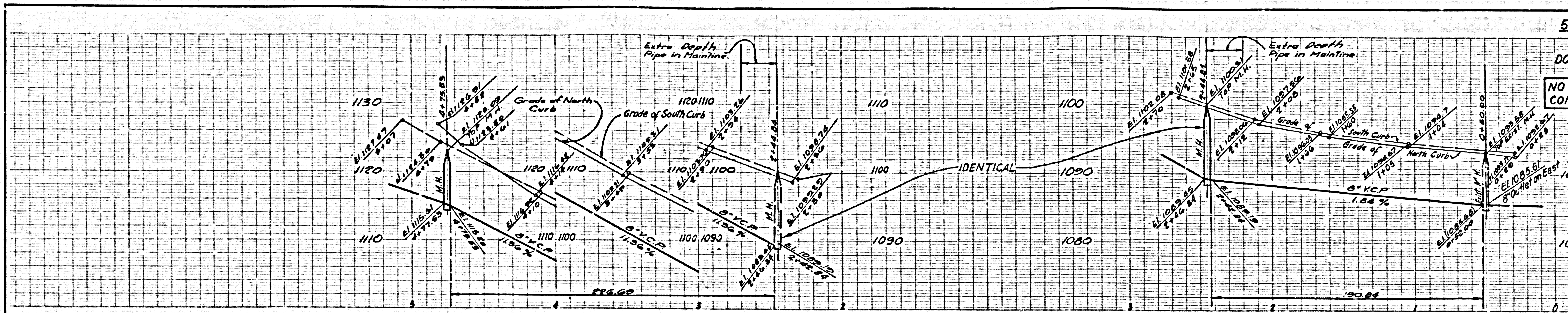
31732



DOUBLE SCALE

NO CHARGE FOR CONNECTIONS

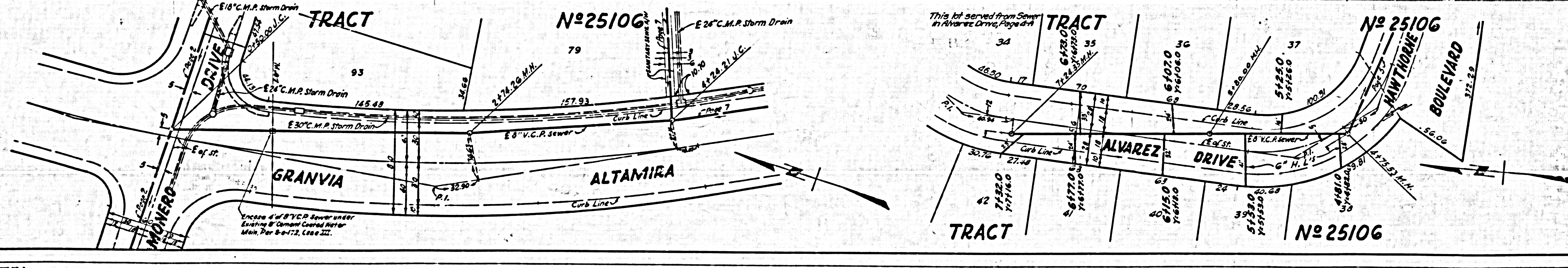
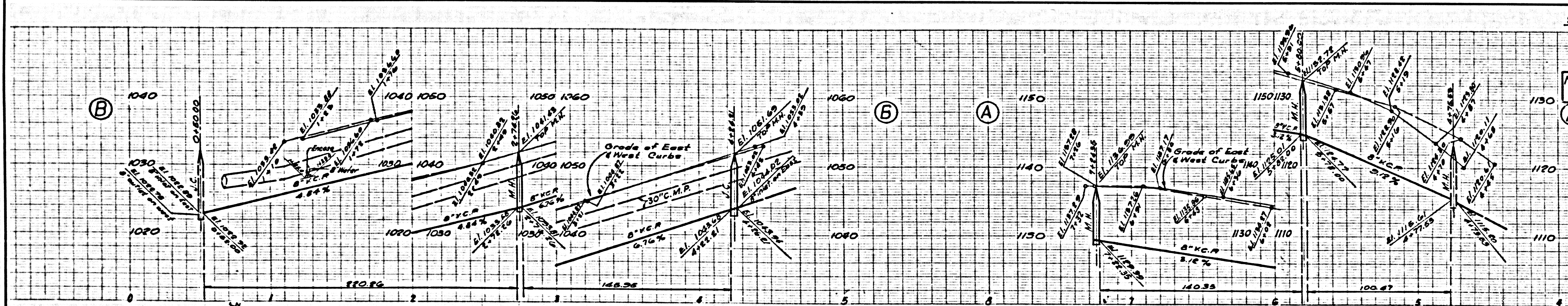
31735



DOUBLE SCALE

NO CHARGE FOR CONNECTIONS

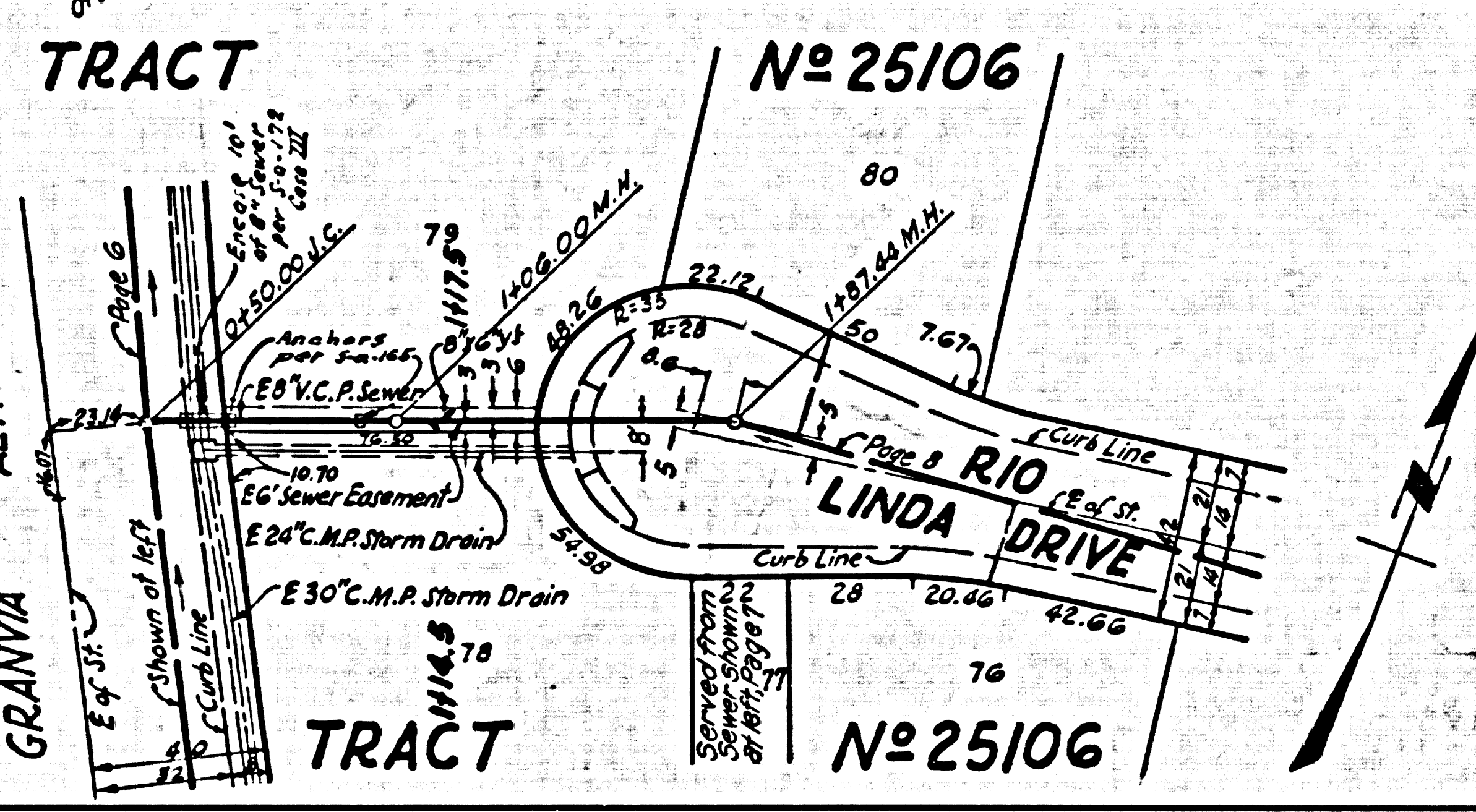
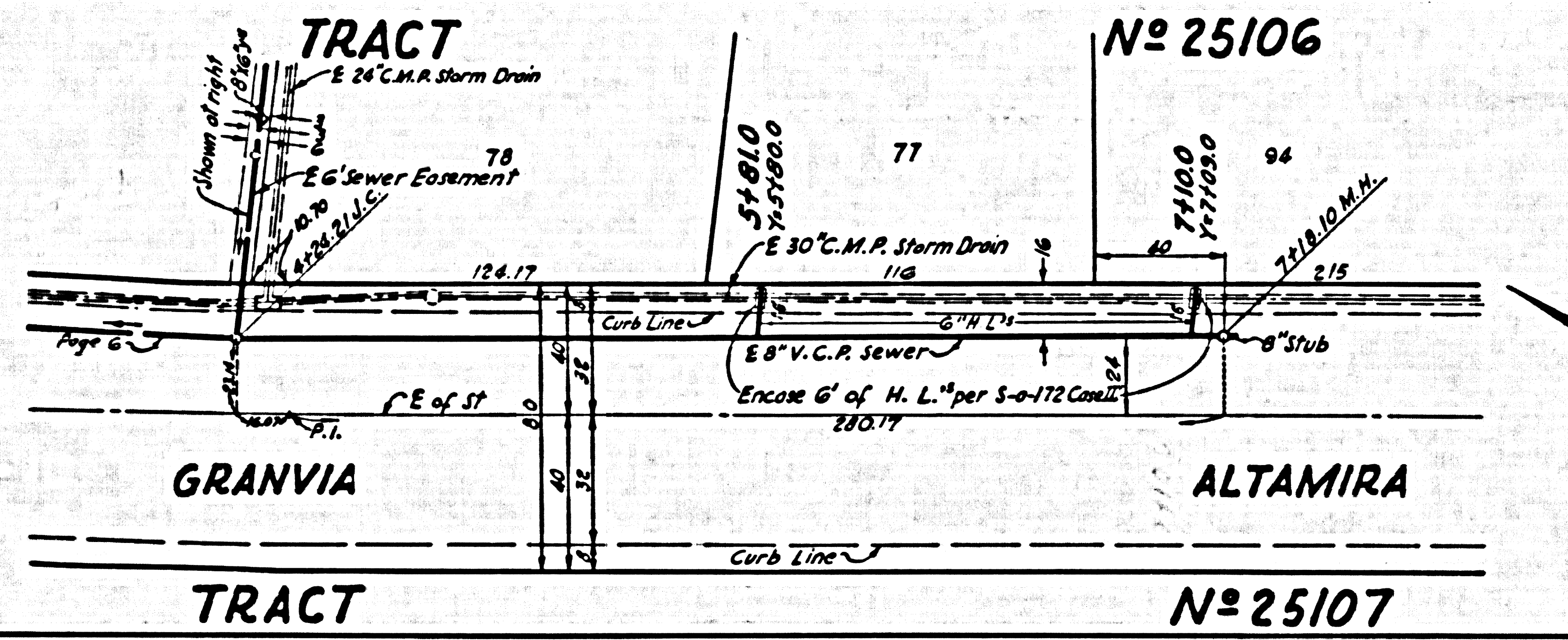
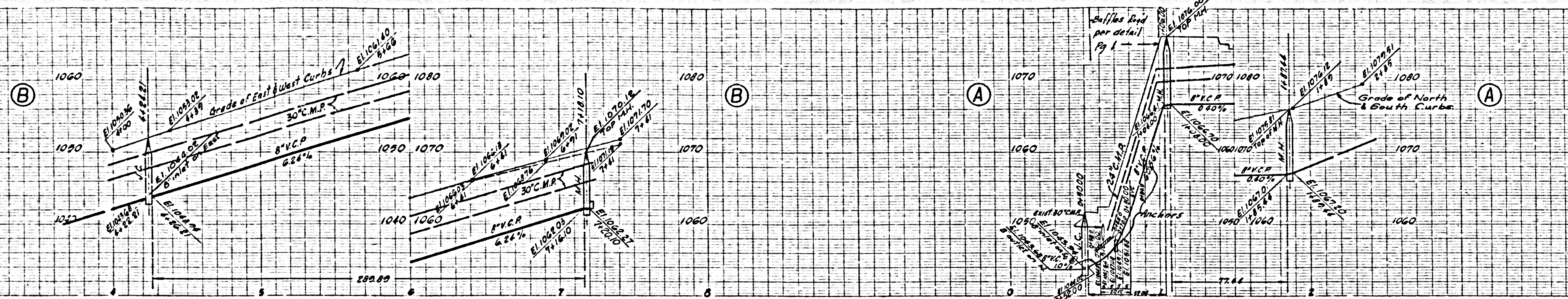
31736



DOUBLE SCALE

NO CHARGE FOR CONNECTIONS

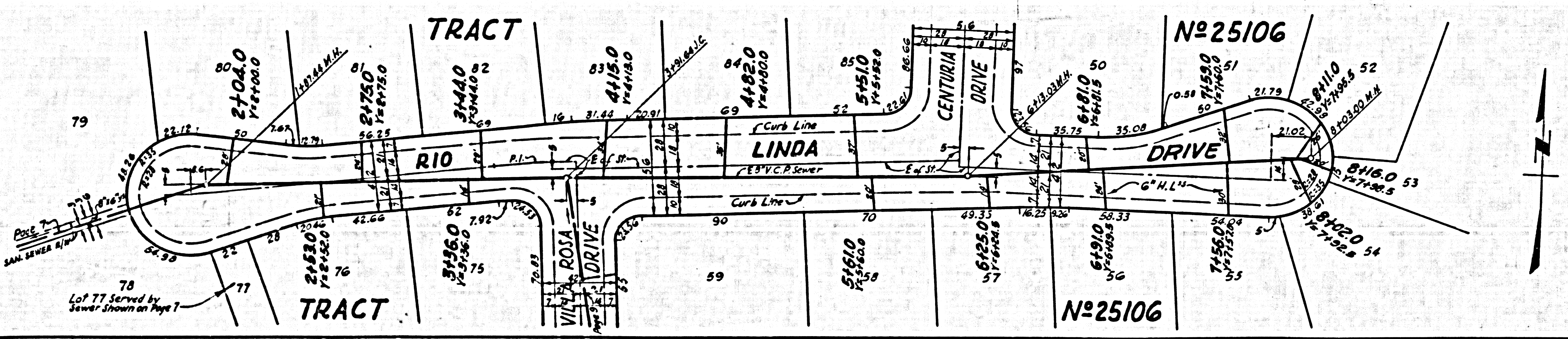
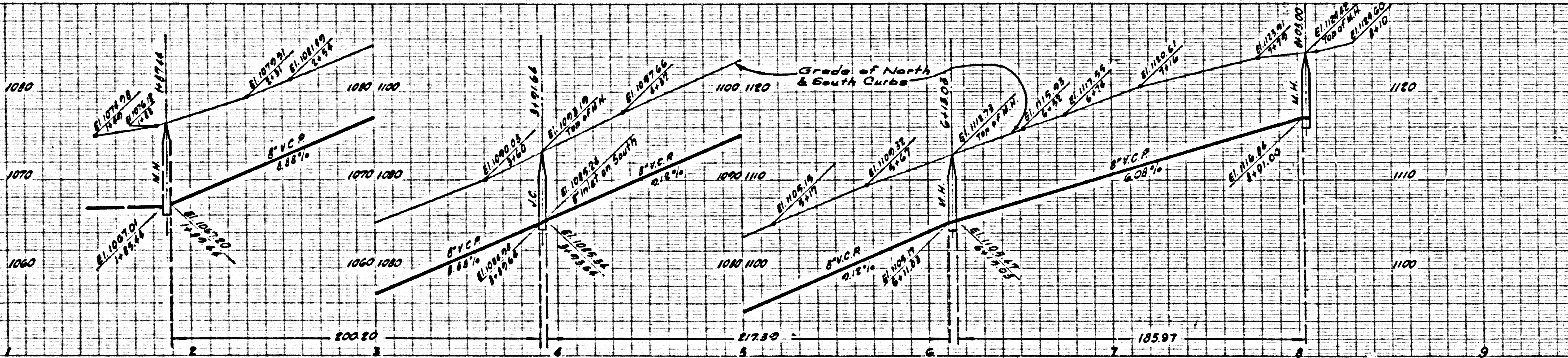
31737



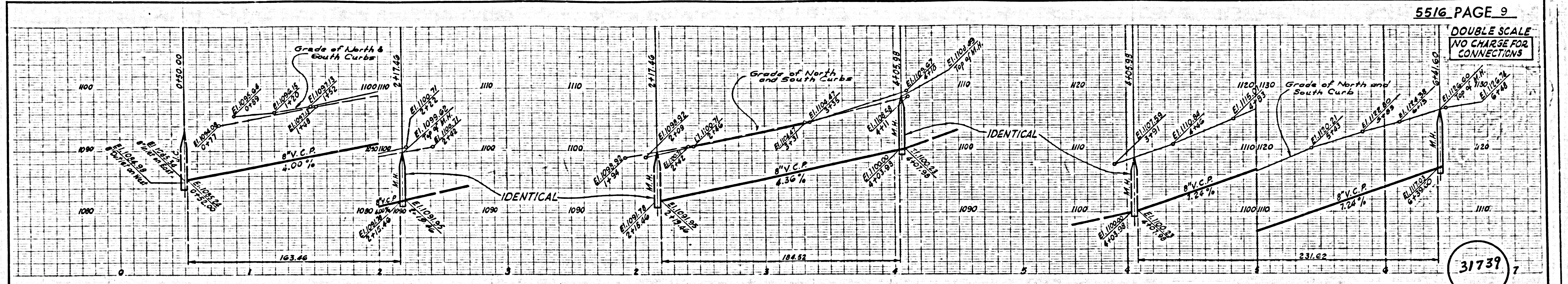
DOUBLE SCALE

NO CHARGE FOR CONNECTIONS

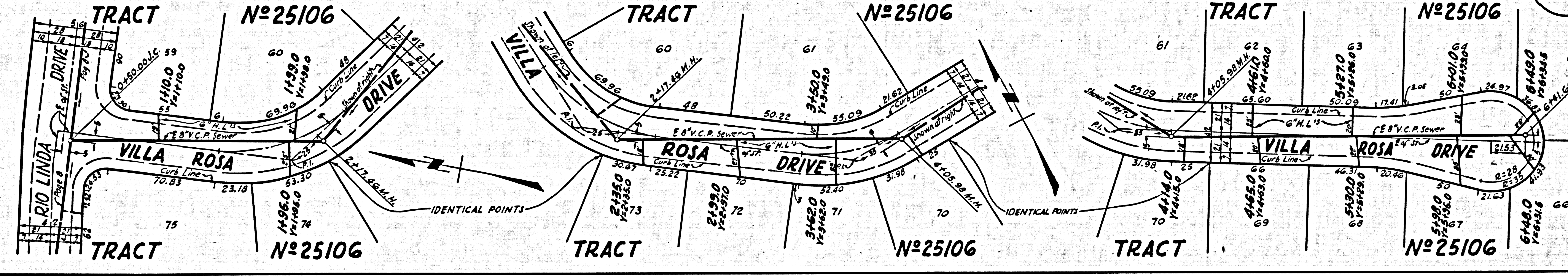
31738



DOUBLE SCALE
NO CHARGE FOR
CONNECTIONS



31739



DOUBLE SCALE
NO CHARGE FOR
CONNECTIONS

31740