

BENCH MARK!
 57-3516 (CARDENA QUAD-1955 ADL)
 ELEV. 53.936 L. 17. N.E. CORNER CONC. WALK
 TO HOUSE 1865 LOMITA BLVD. - 707 SO. E
 LOMITA BOULEVARD.

LOMITA BLDG. DIST. NO. 71

PROFILE ALIGNMENT AND GRADE OF P.C. 5519
 SANITARY SEWERS PAGE 1
 TO BE CONSTRUCTED IN J.N. 0353.46
TRACT No 25556

PRIVATE CONTRACT NO. 5519

W.S. 28
 1 SHEET ; 2 PAGES

SCALE: VERT. 1"=4'
 HORIZ. 1"=40' MAY, 1960
 PREPARED IN THE OFFICES OF

MS INTRE & QUIROS INC.

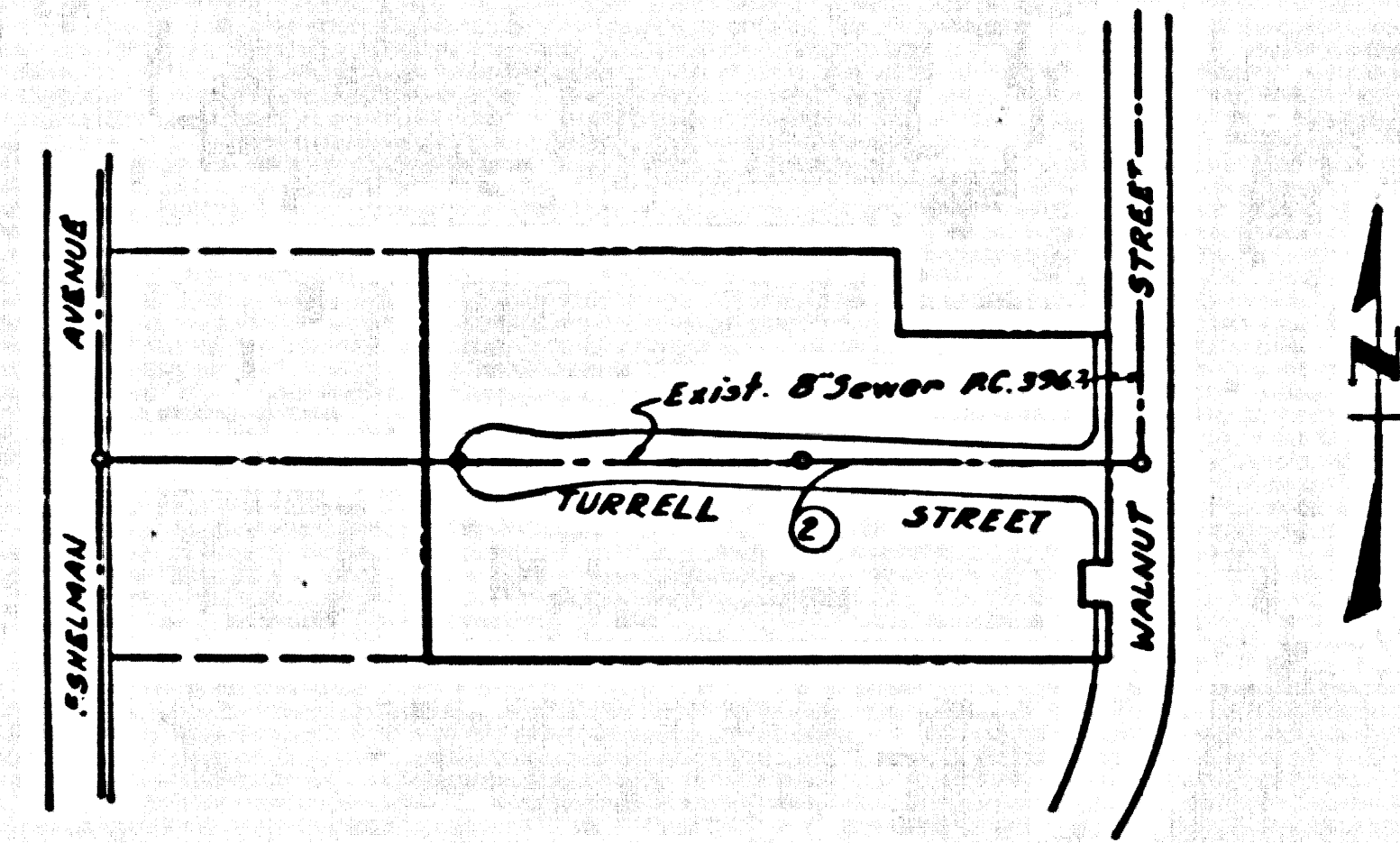
By: *Oliver M. Quiros* 9/20/60
 REG. G.E. NO. 2542

30,181

FOR LEGEND SEE PLAN NO. S-A-64

NOTE:
 GRADES TO WHICH THIS IMPROVEMENT IS TO BE CONSTRUCTED ARE SHOWN ON PLANS AND PROFILES. GRADE POINTS FOR TOP OF CURBS, CENTER LINE OF STREETS, OR CENTER LINE OF ALLEYS ARE SHOWN BY CIRCLES ON PROFILES. AT ALL POINTS BETWEEN DESIGNATED POINTS THE GRADE SHALL BE ESTABLISHED SO AS TO CONFORM TO A STRAIGHT LINE DRAWN BETWEEN SAID DESIGNATED POINTS.
 ELEVATIONS ARE IN FEET ABOVE U.S.C. & G.S. SEA LEVEL DATUM OF 1929.
 THIS DRAWING AND THE DATA HEREON ARE HEREBY MADE A PART OF THE SPECIFICATIONS.
 WORK SHALL BE CONSTRUCTED ACCORDING TO SPECIFICATIONS ON FILE IN THE OFFICE OF THE COUNTY ENGINEER AND SHALL BE PROSECUTED ONLY IN THE PRESENCE OF THE COUNTY ENGINEER.
 BEFORE WORK CAN BE STARTED THE CONTRACTOR MUST OBTAIN A PERMIT TO LOCATE IN COUNTY STREETS FROM THE L. A. COUNTY ROAD DEPT., DISTRICT OFFICE NO. 3, AND PAY A FEE TO THE COUNTY ENGINEER ROOM 224 SAN AMERICAN BUILDING, 315 SO. BROADWAY SUFFICIENT TO COVER THE COST OF CONSTRUCTION INSPECTION AND RECORD PLANS.
 APPROVAL OF THIS PLAN BY THE COUNTY OF LOS ANGELES DOES NOT CONSTITUTE A REPRESENTATION AS TO THE ACCURACY OF THE LOCATION OF OR THE EXISTENCE OR NON-EXISTENCE OF ANY UNDERGROUND UTILITY PIPE, OR IF ANY WORK IS TO BE DONE IN A STATE HIGHWAY, A PERMIT MUST BE OBTAINED FROM THE STATE OF CALIFORNIA, DIVISION OF HIGHWAYS, 120 SOUTH SPRING STREET.

- NOTES:
1. PROVIDE STAKES ON THE PROPERTY LINE OR PROPERTY LINES PRODUCED AT RIGHT ANGLES TO THE SEWER LINE AT THE CENTER LINE OF EACH MANHOLE.
 2. NO REPRESENTATIVE OF THE COUNTY ENGINEER WILL SURVEY OR LAY OUT ANY PORTION OF THE WORK.
 3. THE OWNER OR HIS AUTHORIZED REPRESENTATIVE SHALL FURNISH THE COUNTY ENGINEER WITH GRADE SHEETS AND STATIONING FOR ALL HOUSE LATERALS AND T BRANCHES AND SHALL PROVIDE STAKES FOR THEM AT THEIR PROPER LOCATIONS WITH STATIONING PLAINLY MARKED. ANY CHANGE IN LOCATION SHALL BE REQUESTED IN WRITING BY THE OWNER OR HIS REPRESENTATIVE.
 4. THE PRIVATE ENGINEER SHALL FURNISH THE HOUSE LATERAL DEPTH AT THE PROPERTY LINE BELOW THE TOP OF CURB ELEVATION FOR EACH HOUSE LATERAL ON THE GRADE SHEET.
 5. NO REVISIONS SHALL BE MADE IN THESE PLANS WITHOUT THE APPROVAL OF THE COUNTY ENGINEER.
 6. USE STANDARD MANHOLE FRAMES AND COVERS, S-117.
 7. USE STANDARD STRENGTH RIM EXCEPT AS NOTED.
 8. USE CEMENT MORTAR OR "WEDGELOCK" OR "SPED-SEAL" FOR ALL V.C.P. JOINTS PER SPECS. SECS. 34 & 45.
 9. RESURFACE ALL TRENCH WITHIN PAVED AREA TO MEET L.A. COUNTY ROAD DEPT. OR CALIF. STATE HIGHWAY REQUIREMENTS IN ACCORDANCE WITH PERMITS.
 10. ENCASE FOUR FEET OF SEWER AT POINTS OF INTERFERENCE WITH POLES, CASE III, S-172.
 11. HOUSE LATERALS TO BE CONSTRUCTED WITH INVERTS AT PROPERTY LINE 6 FEET BELOW CURB GRADE.
 12. ALL STRUCTURES SHALL BE BRICK SEWER STRUCTURES, S-104.
 13. FOR ALLOWABLE LEAKAGE TEST USE FORMULA NO. 1, SPECS. SEC. 54.
 14. MANHOLE TOPS IN UNIMPROVED AREAS SHALL BE 20-26 INCHES ABOVE FINISHED GRADE.
 15. THE CONTRACTOR SHALL NOTIFY THE CONSTRUCTION & STORM DRAIN DIVISION BY TELEPHONE, MADISON 5474, EXT. 8521 AT LEAST TWENTY-FOUR HOURS BEFORE STARTING ANY WORK UNDER THIS CONTRACT.
 16. STANDARD SPECIFICATIONS DATED JAN. 1, 1959 APPLY IN THE CONSTRUCTION OF THIS PROJECT.
 17. THE LOCATIONS SHOWN FOR EXISTING SUBSTRUCTURES HAVE BEEN TAKEN FROM RECORDS AND THEIR CORRECTNESS AND COMPLETENESS IS IN NO WAY GUARANTEED. IT SHALL BE THE CONTRACTOR'S RESPONSIBILITY, ALONG WITH DEFINITELY LOCATE ALL UNDERGROUND LINES OF EVERY NATURE, WHATEVER THEIR CHARACTER OR DEPTH, AND PROTECT THEM FROM DAMAGE. THE CONTRACTOR SHALL BEAR THE TOTAL EXPENSE OF REPAIR TO ANY LINE DAMAGED BY ANY OPERATION IN CONNECTION WITH THE PROSECUTION OF THIS WORK.



INDEX MAP
 TRACT No 25556
 P.C. 5519
 SCALE - 1"=200'

Revision:
 Eliminated saddle & lateral at sta 2+81.00
 & use Y of sta 2+67 to serve lot 16 thru private
 sewer R/W. Eliminated laterals at sta.
 7+46.5 & 7+49.0
 Approved: *Edward J. Smith*
 Reg. C.E. No 7267

NO CHARGE FOR CONNECTIONS

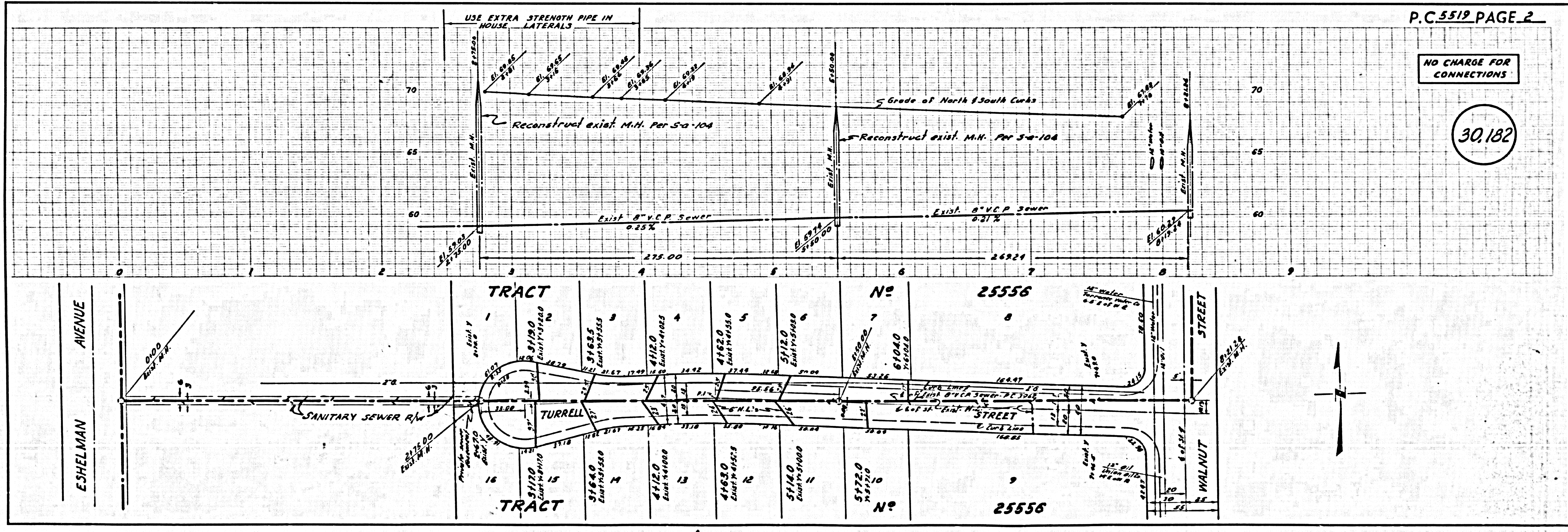
Arthur B. Reedy

COUNTY OF LOS ANGELES, CALIFORNIA

APPROVED, JOHN A. LAMBIE, COUNTY ENGINEER APPROVED, C. R. COMPTON, CHIEF ENGINEER
 CO. SEAL DIST. NO. 2

BY: *Oliver M. Quiros* ASST. SANITATION ENGINEER BY: *A. C. Williams* OFFICE ENGINEER
 CHECKED BY: *Sheila Widner* 9/22/60
 OFFICE OF COUNTY ENGINEER, REG. G. E. NO. 2426

SUBMITTED *Jack C. Lansing* 9/21/60
 PALMS VERDES-CENTINELA VALLEY REGIONAL ENGINEER



P.C. 5519 PAGE 2

NO CHARGE FOR CONNECTIONS

30,182