

B.M.
 57 3520 Elev 70.093 (Gardano Quad-1955 Adj.)
 N. 1/4 E. 1/4 N. 1/4 W. of C.B. Ref. N.W. Corner
 Lomita Blvd. & Harbanna Ave.

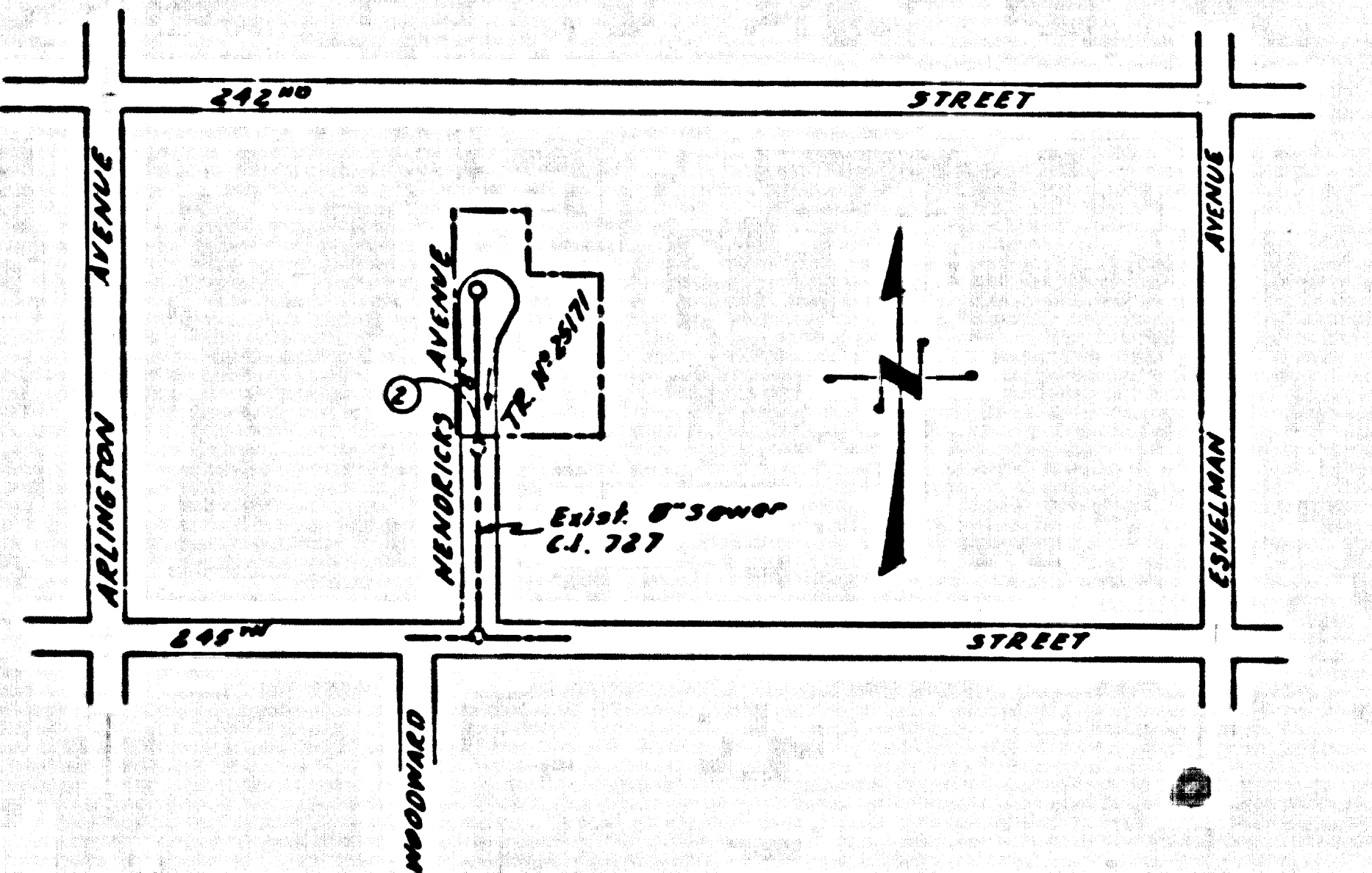
LOMITA BLDG. DIST. NO. 71

PROFILE ALIGNMENT AND GRADE OF P.C. 5520
 SANITARY SEWERS PAGE 1
 TO BE CONSTRUCTED IN J.N. 0353.47

TRACT No 25171
 PRIVATE CONTRACT NO. 5520

W.S. 28
 1 SHEET ; 2 PAGES
 DATE: APRIL, 1960
 PREPARED IN THE OFFICES OF
 MCINTIRE & QUIROS INC.
 FOR GEORGE ENOZ, INC.
 BY: *Oliver Murray* 4/13/60
 REG. P. E. NO. 2549
 FOR LEGEND SEE PLAN NO. S-A-44

30004



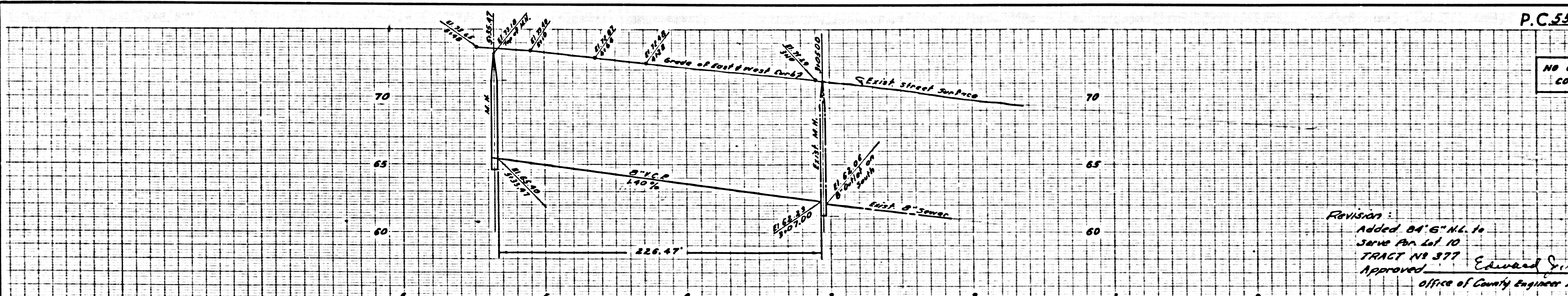
INDEX MAP
 TRACT No 25171
 P.C. 5520
 SCALE: 1"=300'

- NOTES:
1. PROVIDE STAKES ON THE PROPERTY LINE OR PROPERTY LINES PRODUCED AT RIGHT ANGLES TO THE SEWER LINE AT THE CENTER LINE OF EACH MANHOLE.
 2. NO REPRESENTATIVE OF THE COUNTY ENGINEER WILL SURVEY OR LAY OUT ANY PORTION OF THE WORK.
 3. THE OWNER OR HIS AUTHORIZED REPRESENTATIVE SHALL FURNISH THE COUNTY ENGINEER WITH GRADE SHEETS AND STATIONING FOR ALL HOUSE LATERALS AND Y BRANCHES AND SHALL PROVIDE STAKES FOR THEM AT THEIR PROPER LOCATIONS WITH STATIONING PLAINLY MARKED. ANY CHANGE IN LOCATION SHALL BE REQUESTED IN WRITING BY THE OWNER OR HIS REPRESENTATIVE.
 4. THE PRIVATE ENGINEER SHALL FURNISH THE HOUSE LATERAL DEPTH AT THE PROPERTY LINE BELOW THE TOP OF CURB ELEVATION FOR EACH HOUSE LATERAL ON THE GRADE SHEET.
 5. NO REVISIONS SHALL BE MADE IN THESE PLANS WITHOUT THE APPROVAL OF THE COUNTY ENGINEER.
 6. USE STANDARD MANHOLE FRAMES AND COVERS, S-117, 200007-10-W0000.
 7. USE STANDARD STRENGTH PIPE 200007-10-W0000.
 8. USE CEMENT MORTAR OR "WEB-LOC" OR "SPEED-SEAL" FOR ALL V.P.A. JOINTS PER SPEC., SECS. 10 & 11.
 9. RESURFACE ALL TRENCH WITHIN PAVED AREA TO MEET L.A. COUNTY ROAD DEPT. OR CALIF. STATE HIGHWAY REQUIREMENTS IN ACCORDANCE WITH PERMITS.
 10. ENCASE FOUR FEET OF SEWER AT POINTS OF INTERFERENCE WITH POLES, CASE III, S-172.
 11. HOUSE LATERALS TO BE CONSTRUCTED WITH INVERTS AT PROPERTY LINE - 6 FEET BELOW CURB GRADE 200007-10-W0000.
 12. ALL STRUCTURES SHALL BE BRICK SEWER STRUCTURES, S-104, 200007-10-W0000.
 13. FOR ALLOWABLE LEAKAGE TEST USE FORMULA NO. 1, SPEC., SEC. 8A.
 14. MANHOLE TOPS IN UNIMPROVED QUARTERS-WAY TO BE SIX INCHES ABOVE FINISHED GRADE.
 15. THE CONTRACTOR SHALL NOTIFY THE CONSTRUCTION & STORM DRAIN DIVISION BY TELEPHONE, MADISON 3-47, 24 HOURS, AT LEAST TWENTYFOUR HOURS BEFORE STARTING ANY WORK UNDER THIS CONTRACT.
 16. STANDARD SPECIFICATIONS DATED OCTOBER, 1960 APPLY IN THE CONSTRUCTION OF THIS PROJECT.
 17. The contractor shall notify himself of all substructures whether shown hereon or not and shall be responsible for any damage to same.

NO CHARGE FOR CONNECTIONS
Adrian B. Reed

NOTE:
 GRADES TO WHICH THIS IMPROVEMENT IS TO BE CONSTRUCTED ARE SHOWN ON PLANS AND PROFILES. GRADE POINTS FOR TOP OF CURB, CENTER LINE OF STREETS, OR CENTER LINE OF ALLEYS ARE SHOWN BY CIRCLES ON PROFILES. AT ALL POINTS BETWEEN DESIGNATED POINTS THE GRADE SHALL BE ESTABLISHED SO AS TO CONFORM TO A STRAIGHT LINE DRAWN BETWEEN SAID DESIGNATED POINTS.
 ELEVATIONS ARE IN FEET ABOVE U.S.C. & G.S. SEA LEVEL, BATHYM OF 1929.
 THIS DRAWING AND THE DATA HEREOF ARE HEREBY MADE A PART OF THE SPECIFICATIONS.
 WORK SHALL BE CONSTRUCTED ACCORDING TO SPECIFICATIONS ON FILE IN THE OFFICE OF THE COUNTY ENGINEER AND SHALL BE PROSECUTED ONLY IN THE PRESENCE OF THE COUNTY ENGINEER.
 BEFORE WORK CAN BE STARTED THE CONTRACTOR MUST OBTAIN A PERMIT TO EXCAVATE IN COUNTY STREETS FROM THE L. A. COUNTY ROAD DEPT., DISTRICT OFFICE NO. 7, AND PAY A FEE TO THE COUNTY ENGINEER, ROOM 221 FAY AMERICAN BUILDING, 331 SO. BROADWAY SUFFICIENT TO COVER THE COST OF CONSTRUCTION INSPECTION AND RECORD PLANS.
 APPROVAL OF THIS PLAN BY THE COUNTY OF LOS ANGELES DOES NOT CONSTITUTE A REPRESENTATION AS TO THE ACCURACY OF THE LOCATION OF OR THE EXISTENCE OR NON-EXISTENCE OF ANY UNDERGROUND STREET PIPE, OR STRUCTURE WITHIN THE LIMITS OF THIS PROJECT. THIS NOTE APPLIES TO ALL PAGES.
 IF WORK IS TO BE DONE IN A STATE HIGHWAY, A PERMIT MUST BE OBTAINED FROM THE STATE OF CALIFORNIA, DIVISION OF HIGHWAYS, 120 SOUTH SPRING STREET.

COUNTY OF LOS ANGELES, CALIFORNIA
 APPROVED, JOHN A. LAMBIE, COUNTY ENGINEER
 APPROVED, C.R. COMPTON, CHIEF ENGINEER
 DO. SAN. DIST. NO. 1
 BY: *C.E. Smith* BY: *J.C. Compton*
 ASST. SANITATION ENGINEER OFFICE ENGINEER
 CHECKED BY: *W. Oude* 10-13-60
 OFFICE OF COUNTY ENGINEER, REG. C. E. NO. 3446
 SUBMITTED *Jack C. Compton*
 PALMS VERDES - CENTINELA VALLEY REGIONAL ENGINEER



NO CHARGE FOR CONNECTIONS

30005

REVISION:
 Added 84' 6" M.L. to
 Serve Per Lot 10
 TRACT No 377
 Approved: *Edward J. Smith*
 Office of County Engineer Reg. C.E. No. 7267

