

INDEX MAP
SCALE 1" = 200'
TRACT NO. 25610
P.C. 5528

CONNECTION CHARGES
AS INDICATED .5
11/4/60

TEMPLE CITY BLDG. DIST. NO. 5

- NOTES:
1. PROVIDE STAKES ON THE PROPERTY LINE OR PROPERTY LINES PRODUCED AT RIGHT ANGLES TO THE SEWER LINE AT THE CENTER LINE OF EACH MANHOLE.
 2. NO REPRESENTATIVE OF THE COUNTY ENGINEER WILL SURVEY OR LAY OUT ANY PORTION OF THE WORK.
 3. THE OWNER OR HIS AUTHORIZED REPRESENTATIVE SHALL FURNISH THE COUNTY ENGINEER WITH GRADE SHEETS AND STATIONING FOR ALL HOUSE LATERALS AND Y BRANCHES AND SHALL PROVIDE STAKES FOR THEM AT THEIR PROPER LOCATIONS WITH STATIONING PLAINLY MARKED. ANY CHANGE IN LOCATION SHALL BE REQUESTED IN WRITING BY THE OWNER OR HIS REPRESENTATIVE.
 4. THE PRIVATE ENGINEER SHALL FURNISH THE HOUSE LATERAL DEPTH AT THE PROPERTY LINE BELOW THE TOP OF CURB ELEVATION FOR EACH HOUSE LATERAL ON THE GRADE SHEET.
 5. NO REVISIONS SHALL BE MADE IN THESE PLANS WITHOUT THE APPROVAL OF THE COUNTY ENGINEER.
 6. USE STANDARD MANHOLE FRAMES AND COVERS, S-117.
 7. USE STANDARD STRENGTH PIPE EXCEPT AS NOTED.
 8. USE CEMENT MORTAR OR "WEDGE-LOCK" OR "SPEED-SEAL" FOR ALL V.C.R. JOINTS PER SPEC'S. SECS. 36 & 48.
 9. RESURFACE ALL TRENCH WITHIN PAVED AREA TO MEET L.A. COUNTY ROAD DEPT. OR CALIF. STATE HIGHWAY REQUIREMENTS IN ACCORDANCE WITH PERMITS.
 10. ENCASE FOUR FEET OF SEWER AT POINTS OF INTERFERENCE WITH POLES, CASE NO. S-117.
 11. HOUSE LATERALS TO BE CONSTRUCTED WITH INVERTS AT PROPERTY LINE 6 FEET BELOW CURB GRADE EXCEPT AS NOTED.
 12. ALL STRUCTURES SHALL BE BRICK SEWER STRUCTURES, S-104.
 13. FOR ALLOWABLE LEAKAGE TEST USE FORMULA NO. 1 SPEC'S. SEC. 54.
 14. MANHOLE TOPS IN UNIMPROVED RIGHTS-OF-WAY TO BE LEVEL WITH FINISHED GRADE.
 15. THE CONTRACTOR SHALL NOTIFY THE CONSTRUCTION DIVISION BY TELEPHONE, MADISON 5-474, EXT. 8195 AT LEAST TWENTY-FOUR HOURS BEFORE STARTING ANY WORK UNDER THIS CONTRACT.
 16. Standard specifications dated also 4/1/60 apply in the construction of this project.
 17. All the locations shown for existing substructures have been taken from records and their correctness and completeness is in no way guaranteed. It shall be the contractor's responsibility to determine definitely, locate and understand the lines of every structure which shows hereon or not, and protect them from damage. The contractor shall bear the full expense of repairs to any line damaged by any operations in connection with this construction.

BENCH MARK
BENCH MARK SV 3335 ELEV. 343.366
1d. 187' in East and 14d. 123' North
E Arroyo Drive 1275 East of E
Potrero Grande Drive - RIV B24 QUAD 790

PROFILE ALIGNMENT AND GRADE OF P.C. 5528
SANITARY SEWERS PAGE 1
TO BE CONSTRUCTED IN JAN. 1960
TRACT NO. 25610

PRIVATE CONTRACT NO. 5528

W.S. 36 D-2
3 SHEETS; 6 PAGES

SCALE: VERT. 1" = 4'
HORIZ. 1" = 40' April 1960
PREPARED IN THE OFFICES OF
BARCLAY, PEARSON CO., INC.

30,025

By: Edward J. Pearson
REG. C. E. NO. 3723

FOR LEGEND SEE PLAN NO. S-A-64

NOTE:
GRADES TO WHICH THIS IMPROVEMENT IS TO BE CONSTRUCTED ARE SHOWN ON PLANS AND PROFILES. GRADE POINTS FOR TOP OF CURBS, CENTER LINE OF STREETS OR CENTER LINE OF ALLEYS ARE SHOWN BY CIRCLES ON PROFILES. AT ALL POINTS BETWEEN DESIGNATED POINTS THE GRADE SHALL BE ESTABLISHED SO AS TO CONFORM TO A STRAIGHT LINE DRAWN BETWEEN SAID DESIGNATED POINTS.
ELEVATIONS ARE IN FEET ABOVE U.S.C. & G.S. SEA LEVEL DATUM OF 1929.
THIS DRAWING AND THE DATA HEREON ARE HEREBY MADE A PART OF THE SPECIFICATIONS.
WORK SHALL BE CONSTRUCTED ACCORDING TO SPECIFICATIONS ON FILE IN THE OFFICE OF THE COUNTY ENGINEER AND SHALL BE PROSECUTED ONLY IN THE PRESENCE OF THE COUNTY ENGINEER.
BEFORE WORK CAN BE STARTED, THE CONTRACTOR MUST OBTAIN A PERMIT TO EXCAVATE IN COUNTY STREETS FROM THE L.A. COUNTY ROAD DEPT., DISTRICT OFFICE NO. 10, AND PAY A FEE TO THE COUNTY ENGINEER, ROOM 124 FAY AMERICAN BUILDING, 311 SO. BROADWAY SUFFICIENT TO COVER THE COST OF CONSTRUCTION INSPECTION AND RECORD PLANS.
APPROVAL OF THIS PLAN BY THE COUNTY OF LOS ANGELES DOES NOT CONSTITUTE A REPRESENTATION AS TO THE ACCURACY OF THE LOCATION OF OR THE EXISTENCE OR NON-EXISTENCE OF ANY UNDERGROUND UTILITY PIPE, OR STRUCTURE WITHIN THE LIMITS OF THIS PROJECT. THIS NOTE APPLIES TO ALL PAGES.
IF WORK IS TO BE DONE IN A STATE HIGHWAY, A PERMIT MUST BE OBTAINED FROM THE STATE OF CALIFORNIA, DIVISION OF HIGHWAYS, 120 SOUTH SPRING STREET.

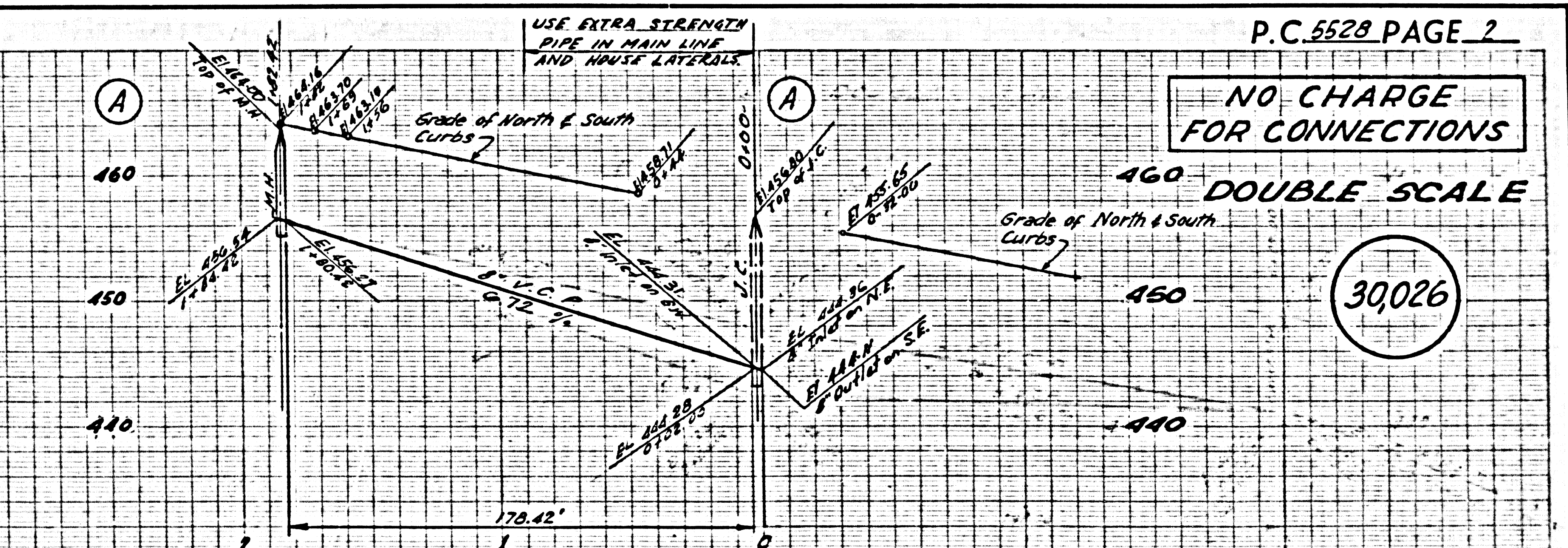
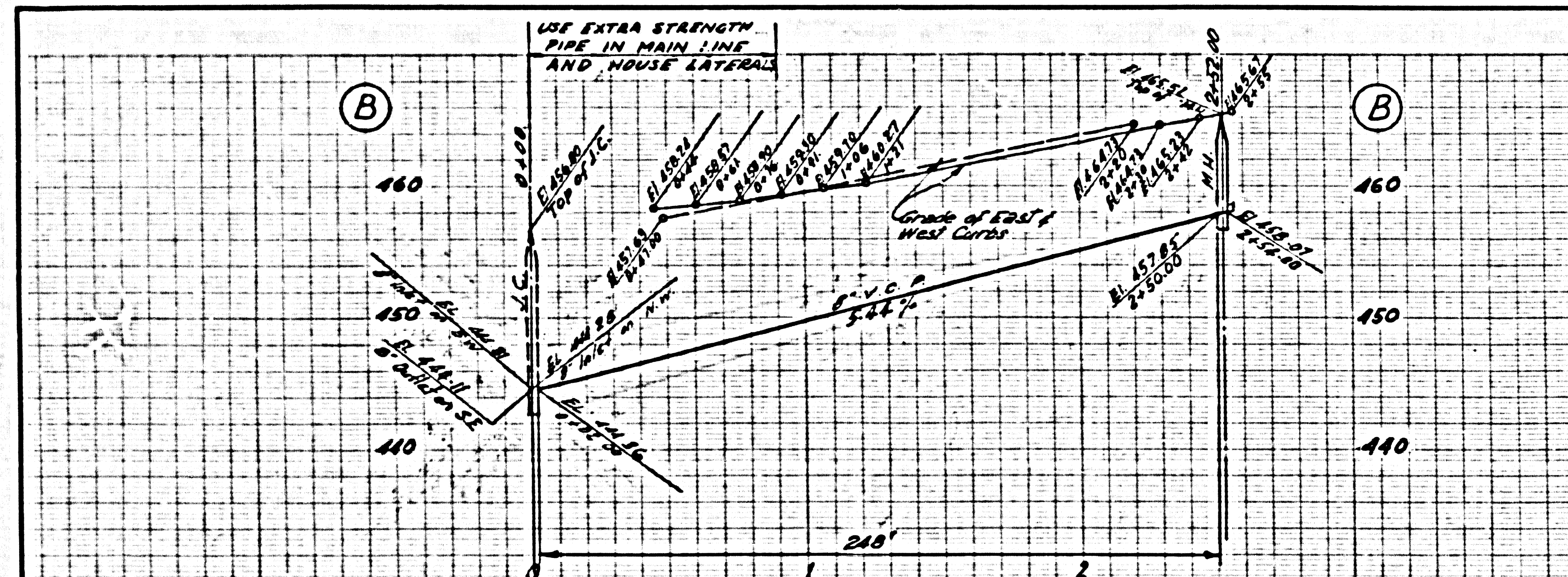
COUNTY OF LOS ANGELES, CALIFORNIA

APPROVED, JOHN A. LAMBIE, COUNTY ENGINEER APPROVED, C.R. COMPTON CHIEF ENGINEER

CO. SAN. DIST. NO. 15
BY: C.E. Pearson, DIST. SANITATION ENGINEER BY: J. Compton, OFFICE ENGINEER

CHECKED BY: S.K. Under 10-6-60
OFFICE OF COUNTY ENGINEER, REG. C. E. NO. 3406

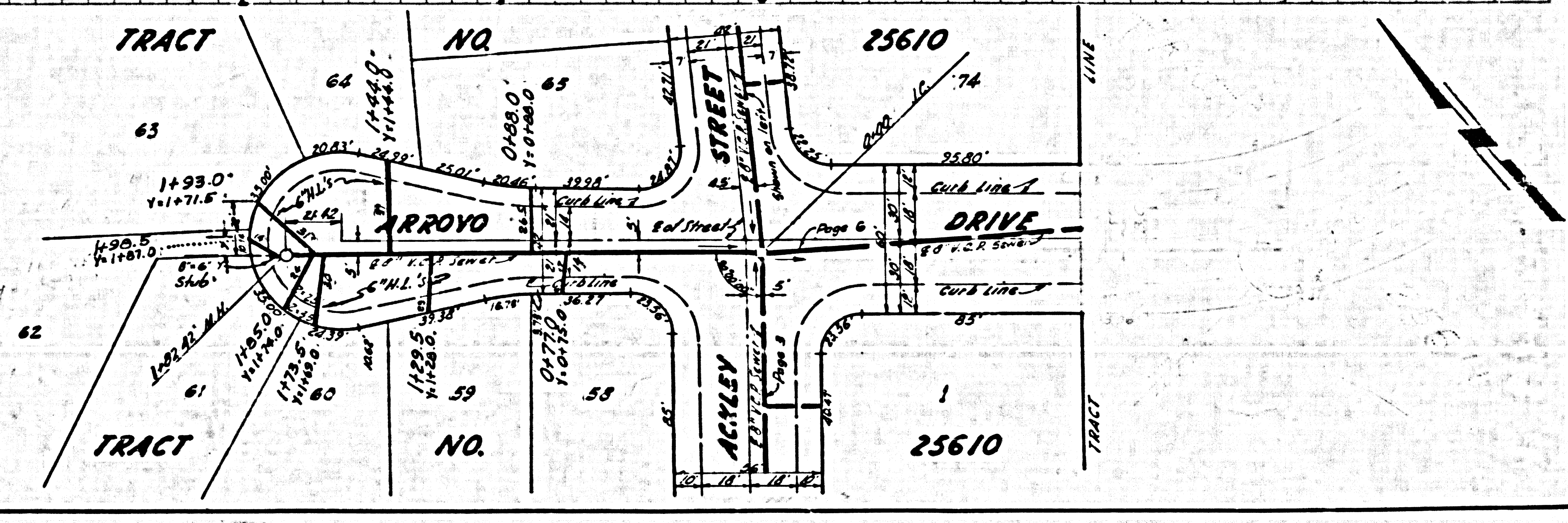
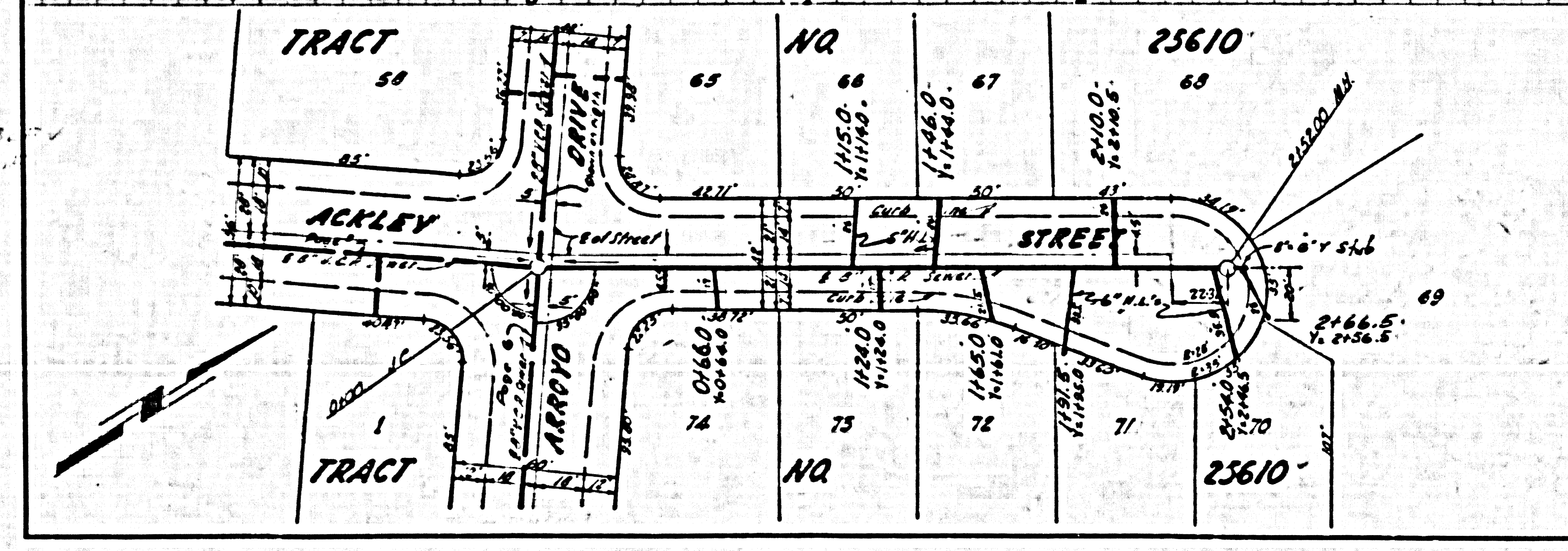
SUBMITTED N. F. Brauer
SAN GABRIEL VALLEY REGIONAL ENGINEERS



P.C. 5528 PAGE 2
NO CHARGE FOR CONNECTIONS

460 DOUBLE SCALE

30,026



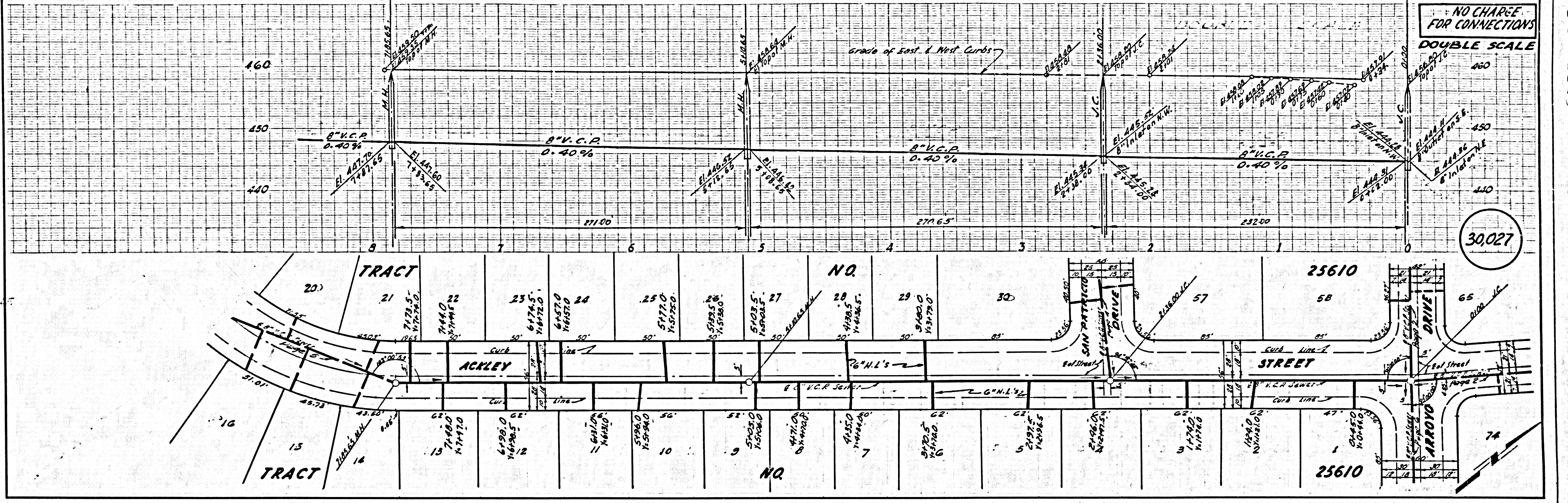
Job
TAB - 2
S.C. = 1
PLAN = 604.48
H.S. = 406.5 L.

11-29-60 H.S.
Guan.

USE EXTRA STRENGTH PIPE IN MAIN LINE AND HOUSE LATERALS

PC 5528 PAGE 3

NO CHARGE FOR CONNECTIONS
DOUBLE SCALE

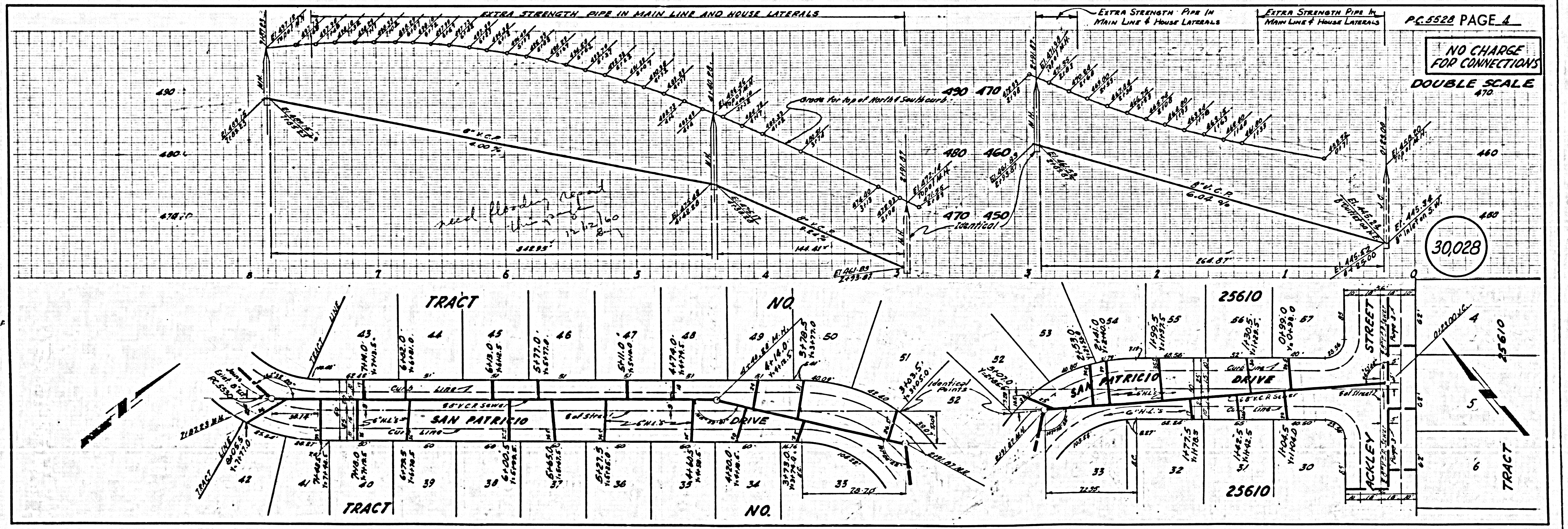


M.H. = 2
V.C. = 1
8" V.C.P. = 773.65 LF
M.I.'S = 609 LF

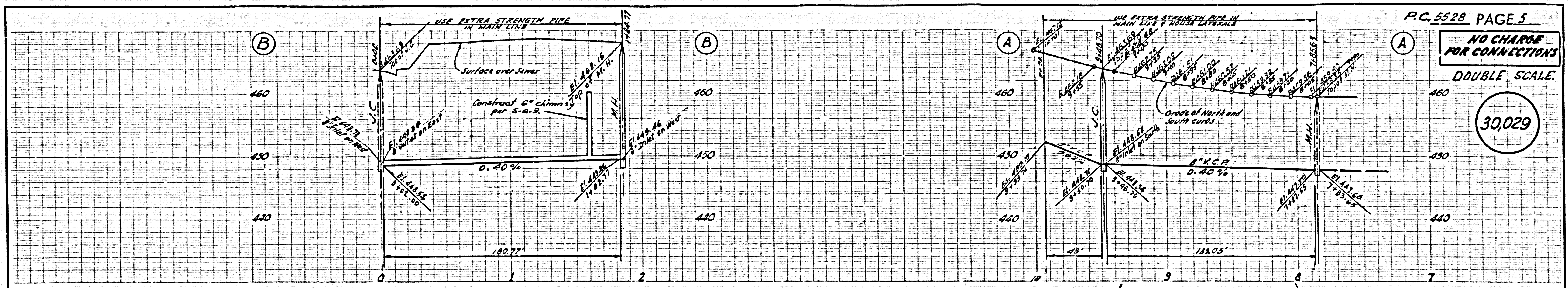
EXTRA STRENGTH PIPE IN MAIN LINE AND HOUSE LATERALS

PC 5528 PAGE 4

NO CHARGE FOR CONNECTIONS
DOUBLE SCALE

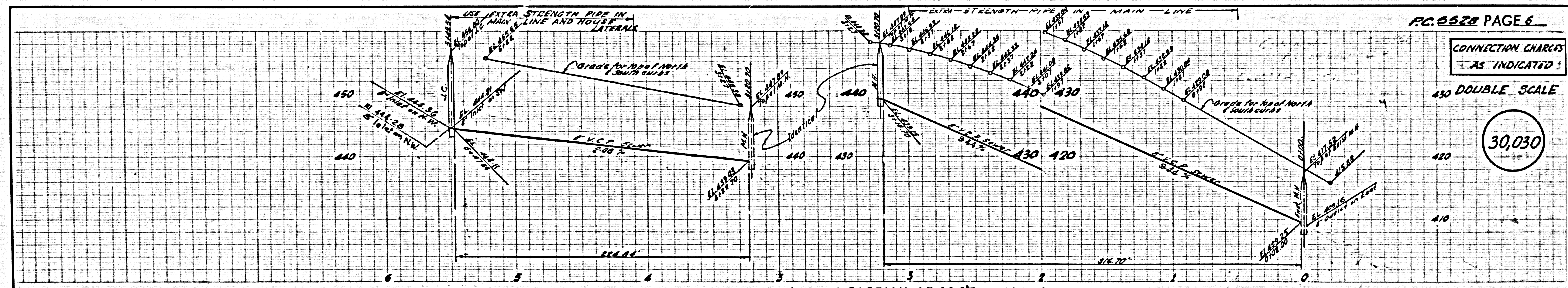
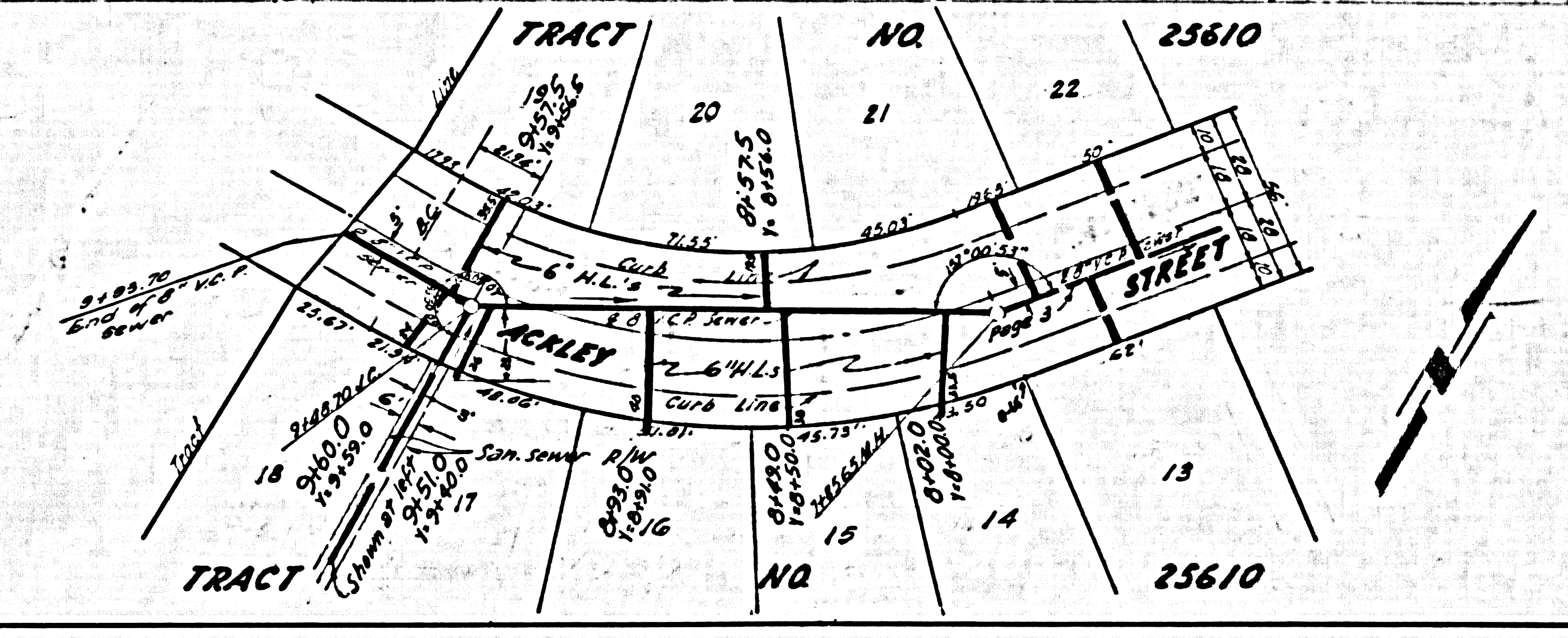
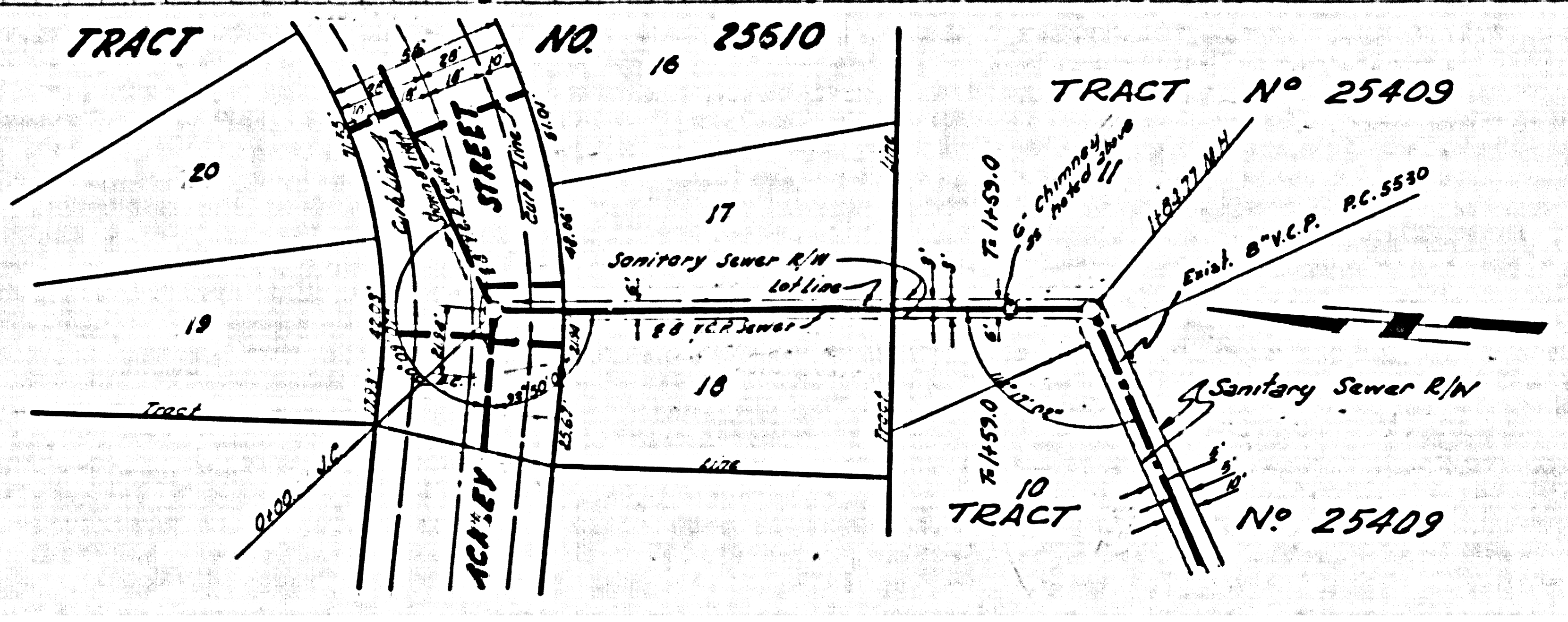


8" V.C.P. = 773.65 LF
M.I.'S = 609 LF
M.H. = 2

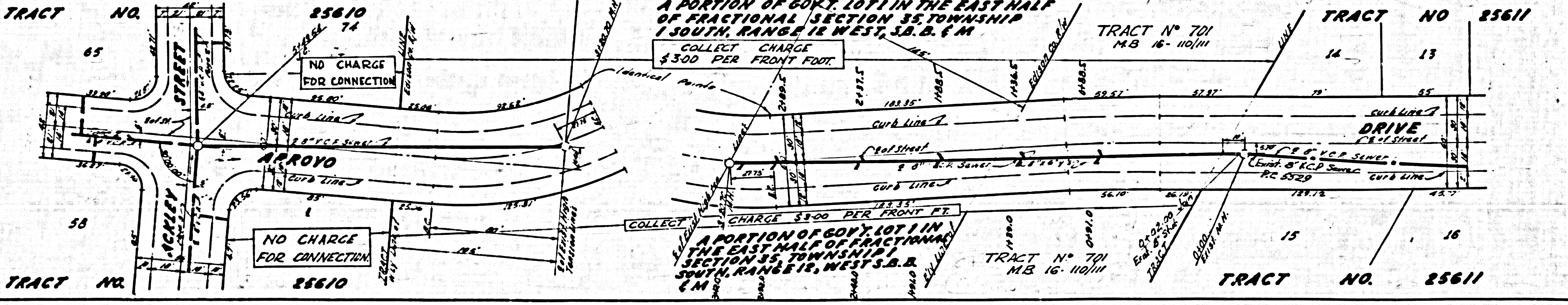


PC 5528 PAGE 5
 NO CHARGE FOR CONNECTIONS
 DOUBLE SCALE
 30,029

5/410 = 24.8 LF
 12 = 1
 1/2 = 1200 L
 1/4 = 1



PC 5528 PAGE 6
 CONNECTION CHARGES AS INDICATED
 DOUBLE SCALE
 30,030



A PORTION OF GOVT. LOT IN THE EAST HALF OF FRACTIONAL SECTION 35, TOWNSHIP 1 SOUTH, RANGE 12 WEST, S.B. & M.
 COLLECT CHARGE \$300 PER FRONT FOOT.
 A PORTION OF GOVT. LOT IN THE EAST HALF OF FRACTIONAL SECTION 35, TOWNSHIP 1 SOUTH, RANGE 12, WEST S.B. & M.
 COLLECT CHARGE \$300 PER FRONT FT.