

TEMPLE CITY BLDG. DIST. NO. 5

PROFILE ALIGNMENT AND GRADE OF **P.C. 5529**
SANITARY SEWERS PAGE 1
 TO BE CONSTRUCTED IN JN 0353.54
TRACT NO. 25611

PRIVATE CONTRACT NO. 5529

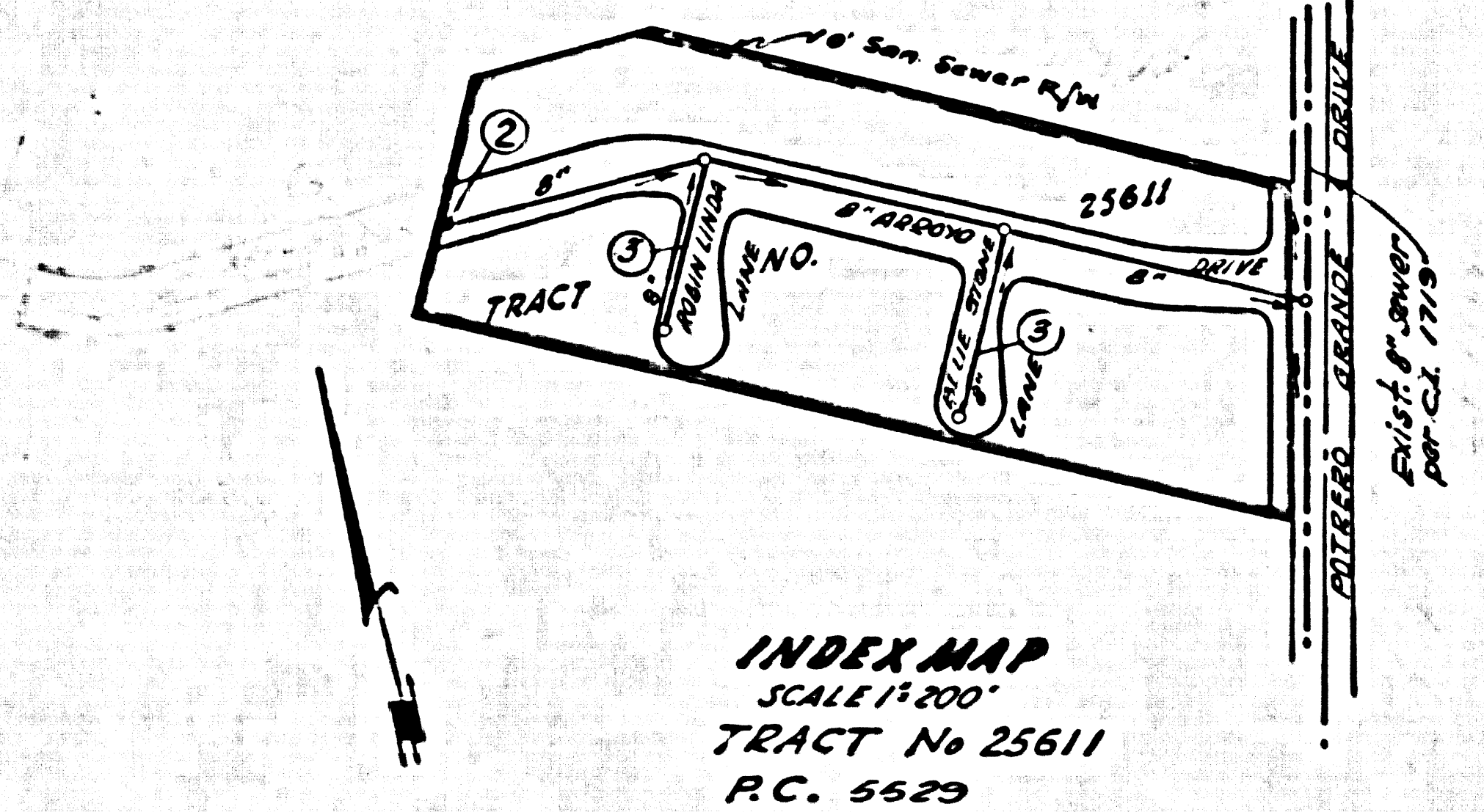
W.S. 36 D-2
 2 SHEETS: 3 PAGES

SCALE: VERT. 1"=4'
 HORIZ. 1"=40'
 April, 1960
 PREPARED IN THE OFFICES OF
 BARCLAY, PEARSON CO., INC.

By: *Donald J. Pearson*
 REG. C. E. NO. 9782

FOR LEGEND SEE PLAN NO. S-A-41

29415



INDEX MAP
 SCALE 1"=200'
 TRACT No. 25611
 R.C. 5529

NO CHARGE
 FOR CONNECTIONS
A. Albertine 6/23/60

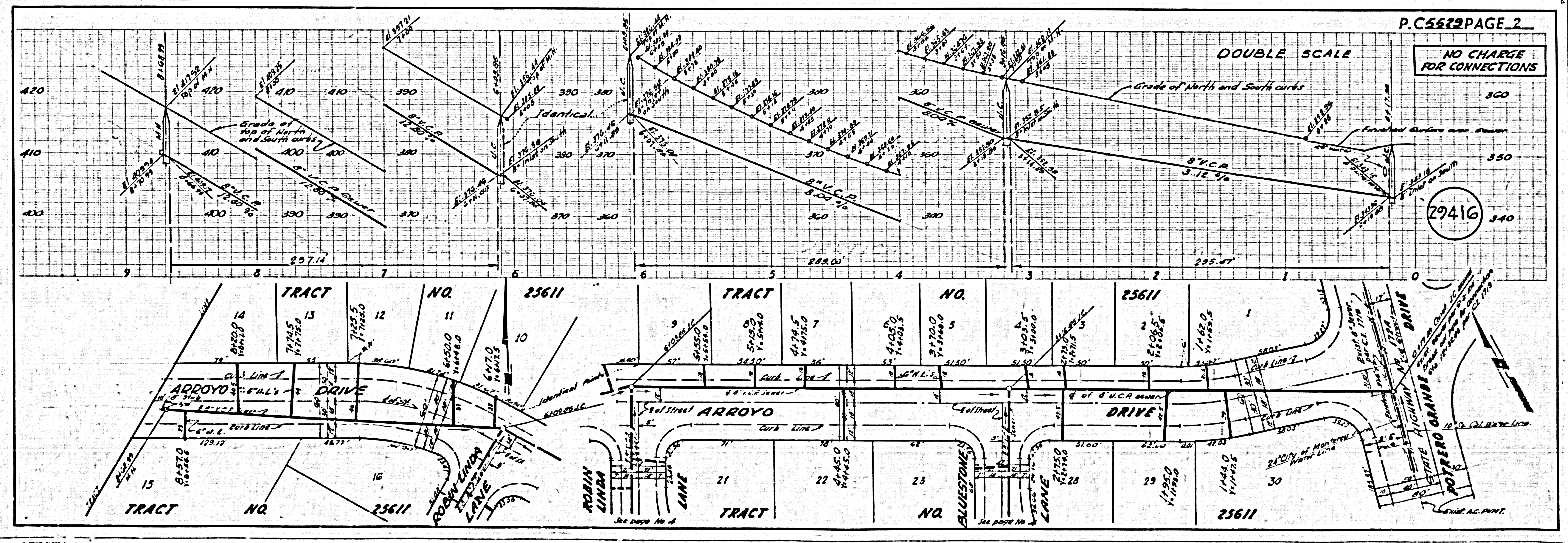
- NOTES:
1. PROVIDE STAKES ON THE PROPERTY LINE OR PROPERTY LINES PRODUCED AT RIGHT ANGLES TO THE SEWER LINE AT THE CENTER LINE OF EACH MANHOLE.
 2. NO REPRESENTATIVE OF THE COUNTY ENGINEER WILL SURVEY OR LAY OUT ANY PORTION OF THE WORK.
 3. THE OWNER OR HIS AUTHORIZED REPRESENTATIVE SHALL FURNISH THE COUNTY ENGINEER WITH GRADE SHEETS AND STATIONING FOR ALL HOUSE LATERALS AND BRANCHES AND SHALL PROVIDE STAKES FOR THEM AT THEIR PROPER LOCATIONS WITH STATIONING PLAINLY MARKED. ANY CHANGE IN LOCATION SHALL BE REQUESTED IN WRITING BY THE OWNER OR HIS REPRESENTATIVE.
 4. THE PRIVATE ENGINEER SHALL FURNISH THE HOUSE LATERAL BATH AT THE PROPERTY LINE BELOW THE TOP OF CURB ELEVATION FOR EACH HOUSE LATERAL ON THE GRADE SHEET.
 5. NO REVISIONS SHALL BE MADE IN THESE PLANS WITHOUT THE APPROVAL OF THE COUNTY ENGINEER.
 6. USE STANDARD MANHOLE FRAMES AND COVERS, 5-11T.
 7. USE STANDARD STRENGTH PIPE.
 8. USE CEMENT MORTAR OR "WEDGE-LOCK" OR "SPREAD-SEAL" FOR ALL V.C.P. JOINTS PER SPEC'S, SECS. 34 & 41.
 9. RESURFACE ALL TRENCH WITHIN PAVED AREA TO MEET L.A. COUNTY ROAD DEPT. OR CALIF. STATE HIGHWAY REQUIREMENTS IN ACCORDANCE WITH PERMITS.
 10. ENCASE FOUR FEET OF SEWER AT POINTS OF INTERFERENCE WITH POLES, CASE IN. 5-172.
 11. HOUSE LATERALS TO BE CONSTRUCTED WITH INVERTS AT PROPERTY LINE ... FEET BELOW CURB GRADE EXCEPT AS NOTED.
 12. ALL STRUCTURES SHALL BE BRICK SEWER STRUCTURES, 5-104, EXCEPT AS NOTED.
 13. FOR ALLOWABLE LEAKAGE TEST USE FORMULA NO. 1 SPEC'S, SEC. 34.
 14. THE CONTRACTOR SHALL NOTIFY THE ... CONSTRUCTION DIVISION BY TELEPHONE, MADISON 5-071, AT LEAST TWENTY-FOUR HOURS BEFORE STARTING ANY WORK UNDER THIS CONTRACT.
 15. Standard specifications dated Jan. 1, 1960 apply in the construction of this project.
 16. All the locations shown for existing structures have been taken from records and their correctness and completeness is no way guaranteed. It shall be the contractor's responsibility above to verify the location of all underground lines of any nature whether shown or not, and protect them from damage. The Contractor shall bear the total expense of repair to any line damaged by any operation in connection with the prosecution of this work.
 17. Figures in circles at ends of house laterals indicate house laterals shall be constructed with 1/2" rise per foot to property line.

BENCH MARK
 BENCH MARK SY 3335 ELEV. 343.366
 78' 1/2" in East and 40' 1/2" North
 of Arroyo Drive + 275' East of E
 Potrero Grande Drive
 Divers Quad 1955

NOTE:
 GRADES TO WHICH THIS IMPROVEMENT IS TO BE CONSTRUCTED ARE SHOWN ON PLANS AND PROFILES. GRADE POINTS FOR TOP OF CURBS, CENTER LINE OF STREETS, OR CENTER LINE OF ALLEYS ARE SHOWN BY CIRCLES ON PROFILES. AT ALL POINTS BETWEEN DESIGNATED POINTS THE GRADE SHALL BE ESTABLISHED SO AS TO CONFORM TO A STRAIGHT LINE DRAWN BETWEEN SAID DESIGNATED POINTS.
 ELEVATIONS ARE IN FEET ABOVE U.S.C. & G.S. SEA LEVEL DATUM OF 1929.
 THIS DRAWING AND THE DATA HEREON ARE HEREBY MADE A PART OF THE SPECIFICATIONS.
 WORK SHALL BE CONSTRUCTED ACCORDING TO SPECIFICATIONS ON FILE IN THE OFFICE OF THE COUNTY ENGINEER AND SHALL BE PROSECUTED ONLY IN THE PRESENCE OF THE COUNTY ENGINEER.
 BEFORE WORK CAN BE STARTED, THE CONTRACTOR MUST OBTAIN A PERMIT TO EXCAVATE IN COUNTY STREETS FROM THE L. A. COUNTY ROAD DEPT., DISTRICT OFFICE NO. 7, AND PAY A FEE TO THE COUNTY ENGINEER ROOM 324 FAY AMERICAN BUILDING, 324 S. BROADWAY SUBJECT TO COVER THE COST OF CONSTRUCTION INSPECTION AND RECORD PLANS.
 APPROVAL OF THIS PLAN BY THE COUNTY OF LOS ANGELES DOES NOT CONSTITUTE A REPRESENTATION AS TO THE ACCURACY OF THE LOCATION OF OR THE EXISTENCE OR NON-EXISTENCE OF ANY UNDERGROUND UTILITY PIPE, OR STR. C. WORK WITHIN THE LIMITS OF THIS PROJECT. THIS NOTE APPLIES TO ALL PAGES.
 IF WORK IS TO BE DONE IN A STATE HIGHWAY, A PERMIT MUST BE OBTAINED FROM THE STATE OF CALIFORNIA, DIVISION OF HIGHWAYS, 128 SOUTH SPRING STREET.

COUNTY OF LOS ANGELES, CALIFORNIA
 APPROVED, JOHN A. LAMBIE, COUNTY ENGINEER APPROVED, C.E. COMPTON, CHIEF ENGINEER
 CO. SAN. DIST. NO. 125
 BY: *E. J. ...* BY: *E. J. ...*
 SANITATION ENGINEER PL. OFFICE ENGINEER
 CHECKED BY: *S. K. ...*
 OFFICE OF COUNTY ENGINEER, Rm. C. E. NO. 346

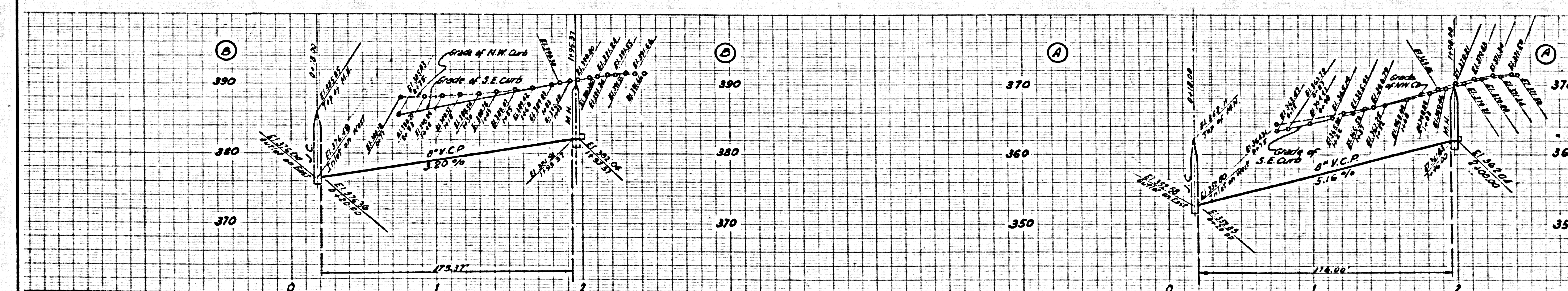
SUBMITTED BY: *N. F. Braucher*
 SAN GABRIEL VALLEY REGIONAL ENGINEER



P.C. 5529 PAGE 2

NO CHARGE
 FOR CONNECTIONS

29416



NO CHARGE FOR CONNECTIONS

DOUBLE SCALE

29417

