

TO: SHERIFF  
 11/11/60 - 2400.96 L.F.  
 11/12/60 - 16100.00 L.F.  
 11/13/60 - 4  
 11/14/60 - 1

NO CHARGE FOR CONNECTIONS  
 11/11/60 11/12/60

TEMPLE CITY, BLDG. DIST. NO. 5

- NOTES:
1. PROVIDE STAKES ON THE PROPERTY LINE OR PROPERTY LINES PRODUCED AT RIGHT ANGLES TO THE SEWER LINE AT THE CENTER LINE OF EACH MANHOLE.
  2. NO REPRESENTATIVE OF THE COUNTY ENGINEER WILL SURVEY OR LAY OUT ANY PORTION OF THE WORK.
  3. THE OWNER OR HIS AUTHORIZED REPRESENTATIVE SHALL FURNISH THE COUNTY ENGINEER WITH GRADE SHEETS AND STATIONING FOR ALL HOUSE LATERALS AND Y BRANCHES AND SHALL PROVIDE STAKES FOR THEM AT THEIR PROPER LOCATIONS WITH STATIONING PLAINLY MARKED. ANY CHANGE IN LOCATION SHALL BE REQUESTED IN WRITING BY THE OWNER OR HIS REPRESENTATIVE.
  4. THE PRIVATE ENGINEER SHALL FURNISH THE HOUSE LATERAL DEPTH AT THE PROPERTY LINE BELOW THE TOP OF CURB ELEVATION FOR EACH HOUSE LATERAL ON THE GRADE SHEET.
  5. NO REVISIONS SHALL BE MADE IN THESE PLANS WITHOUT THE APPROVAL OF THE COUNTY ENGINEER.
  6. USE STANDARD MANHOLE FRAMES AND COVERS, S-117, SPEC. SEC. 54.
  7. USE STANDARD STRENGTH PIPE EXCEPT AS NOTED.
  8. USE CEMENT MORTAR OR "WEDGE-LOCK" OR "SPEED-SEAL" FOR ALL V.C.P. JOINTS PER SPEC. SEC. 54 & 48.
  9. RESURFACE ALL TRENCH WITHIN PAVED AREA TO MEET L.A. COUNTY ROAD DEPT. OR CALIF. STATE HIGHWAY REQUIREMENTS IN ACCORDANCE WITH PERMITS.
  10. ENCASE FOUR FEET OF SEWER AT POINTS OF INTERFERENCE WITH POLES, CASE NO. S-172.
  11. HOUSE LATERALS TO BE CONSTRUCTED WITH INVERTS AT PROPERTY LINE 6 FEET BELOW CURB GRADE EXCEPT AS NOTED.
  12. ALL STRUCTURES SHALL BE BRICK SEWER STRUCTURES, S-114.
  13. FOR ALLOWABLE LEAKAGE TEST USE FORMULA NO. 1, SPEC. SEC. 54.
  14. MANHOLE TOPS IN UNIMPROVED RIGHTS-OF-WAY TO BE 4" LEVEL WITH FINISHED GRADE.
  15. THE CONTRACTOR SHALL NOTIFY THE COUNTY ENGINEER BY TELEPHONE, MADISON 5-410, EXT. 5181 AT LEAST TWENTY-FOUR HOURS BEFORE STARTING ANY WORK UNDER THIS CONTRACT.
  16. Standard specifications dated Jan. 1, 1960 apply in the construction of this project.
  17. All locations shown for existing structures have been taken from records and their correctness and completeness is in no way guaranteed. It shall be the contractor's responsibility to check the locations of existing structures and to make any necessary adjustments or repairs to protect them from damage. The contractor shall bear the full expense of repair in any case of damage by any operation in connection with the prosecution of this work.

BENCH MARK  
 BENCH MARK SY 3335 ELEV. 343.366  
 1/4 1/4 IN. EAST AND NORTH 1/4 1/4 NORTH  
 E Arroyo Drive 5275' SOUTH OF E  
 Potrero Grande Drive - Riviera Quad. 1335

PROFILE ALIGNMENT AND GRADE OF P.C. 5530  
 SANITARY SEWERS PAGE 1  
 TO BE CONSTRUCTED IN U.M. 0353.55  
 TRACT NO. 25409

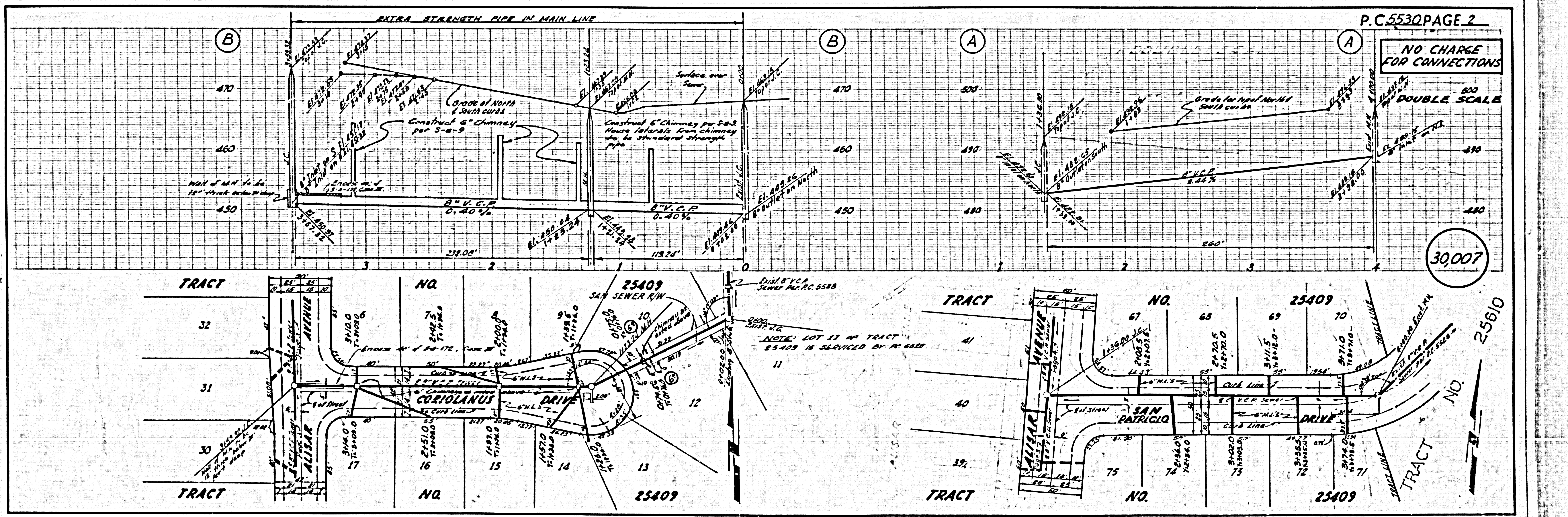
PRIVATE CONTRACT NO. 5530  
 W.S. 36 D-2  
 3 SHEETS; 8 PAGES  
 SCALE: VERT. 1" = 4'  
 HORIZ. 1" = 40' APRIL, 1960  
 PREPARED IN THE OFFICES OF  
 BARCLAY, PEARSON CO., INC.  
 BY: Edward P. Pearson  
 REG. C. E. NO. 2783

30,006

FOR LEGEND SEE PLAN NO. S-A-64  
 NOTE:  
 GRADES TO WHICH THIS IMPROVEMENT IS TO BE CONSTRUCTED ARE SHOWN ON PLANS AND PROFILES. GRADE POINTS FOR TOP OF CURBS, CENTER LINE OF STREETS OR CENT. & LINE OF ALLEYS ARE SHOWN BY CIRCLES ON PROFILES. AT ALL POINTS BETWEEN DESIGNATED POINTS THE GRADE SHALL BE ESTABLISHED SO AS TO CONFORM TO A STRAIGHT LINE DRAWN BETWEEN SAID DESIGNATED POINTS.  
 ELEVATIONS ARE IN FEET ABOVE U.S.C. & G.S. SEA LEVEL, DATUM OF 1929.  
 THIS DRAWING AND THE DATA HEREON ARE HEREBY MADE A PART OF THE SPECIFICATIONS.  
 WORK SHALL BE CONSTRUCTED ACCORDING TO SPECIFICATIONS ON FILE IN THE OFFICE OF THE COUNTY ENGINEER AND SHALL BE PROSECUTED ONLY IN THE PRESENCE OF THE COUNTY ENGINEER.  
 BEFORE WORK CAN BE STARTED, THE CONTRACTOR MUST OBTAIN A PERMIT TO EXCAVATE IN COUNTY STREETS FROM THE L.A. COUNTY ROAD DEPT., DISTRICT OFFICE NO. 10, 401 1/2 WEST 1ST ST., THE COUNTY ENGINEER'S ROOM, 334 SAN AMERICAN BUILDING, 333 SO. BROADWAY SUFFICIENT TO COVER THE COST OF CONSTRUCTION INSPECTION AND RECORD PLANS.  
 APPROVAL OF THIS PLAN BY THE COUNTY OF LOS ANGELES DOES NOT CONSTITUTE A REPRESENTATION AS TO THE ACCURACY OF THE LOCATION OF OR THE EXISTENCE OR NON-EXISTENCE OF ANY UNDERGROUND UTILITY PIPE, OR STRUCTURE WITHIN THE LIMITS OF THIS PROJECT. THIS NOTE APPLIES TO ALL PAGES.  
 IF WORK IS TO BE DONE IN A STATE HIGHWAY, A PERMIT MUST BE OBTAINED FROM THE STATE OF CALIFORNIA, DIVISION OF HIGHWAYS, 126 SOUTH SPRING STREET.

COUNTY OF LOS ANGELES, CALIFORNIA  
 APPROVED, JOHN A. LAMBE, COUNTY ENGINEER APPROVED, C.E. COMPTON, CHIEF ENGINEER  
 BY: E.E. PEARSON BY: G. P. ...  
 10-6-60  
 OFFICE OF COUNTY ENGINEER, REG. C. E. NO. 346

SUBMITTED: A.P. Brummer  
 SAN GABRIEL VALLEY REGIONAL ENGINEER

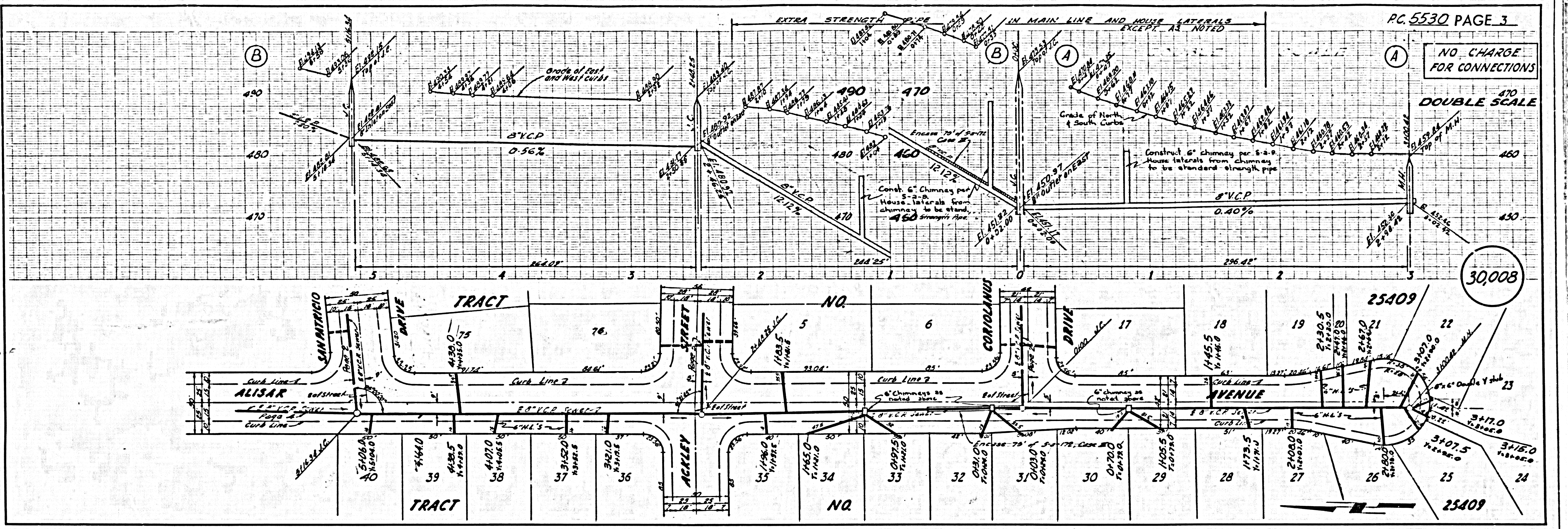


30,007

NO CHARGE FOR CONNECTIONS

DOUBLE SCALE

30,008

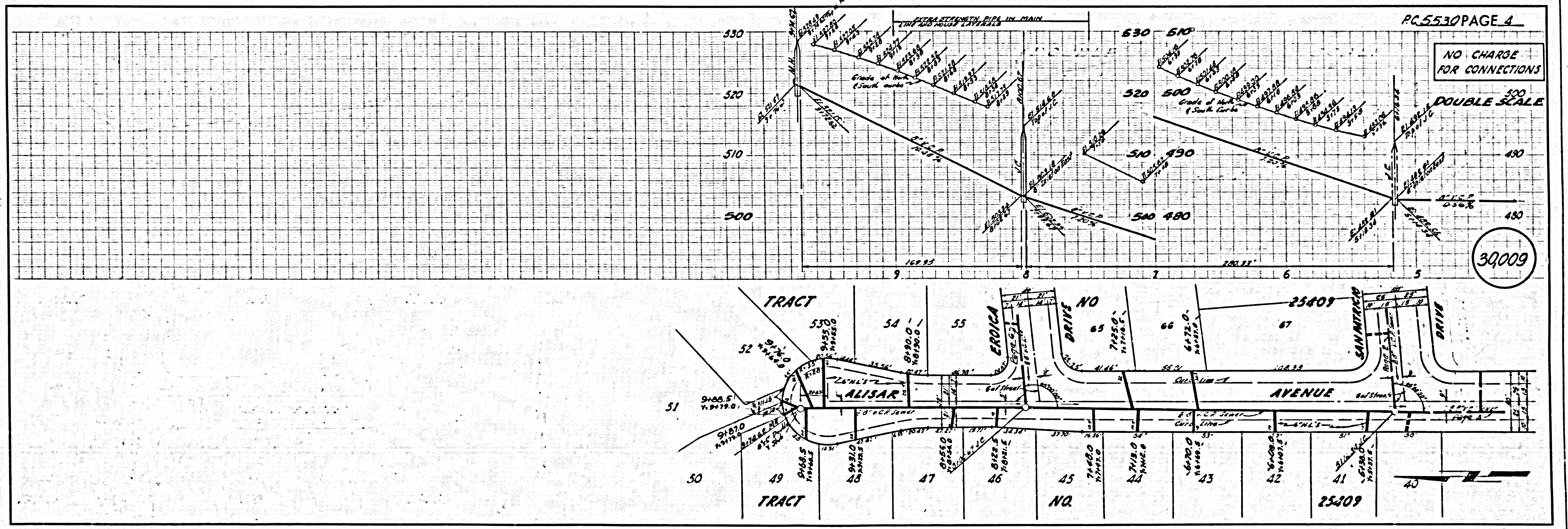


8" VCP 12.12%  
7.41' H. = 1  
5.5' S  
4.12' S 0.14' L.F.

NO CHARGE FOR CONNECTIONS

DOUBLE SCALE

30,009

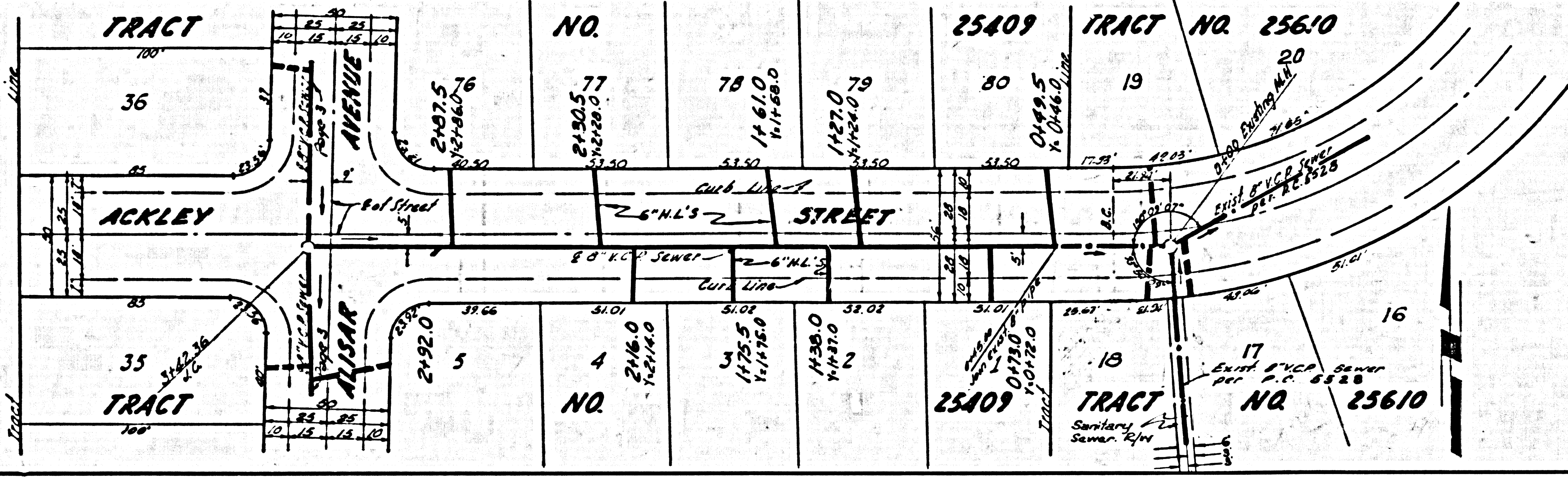
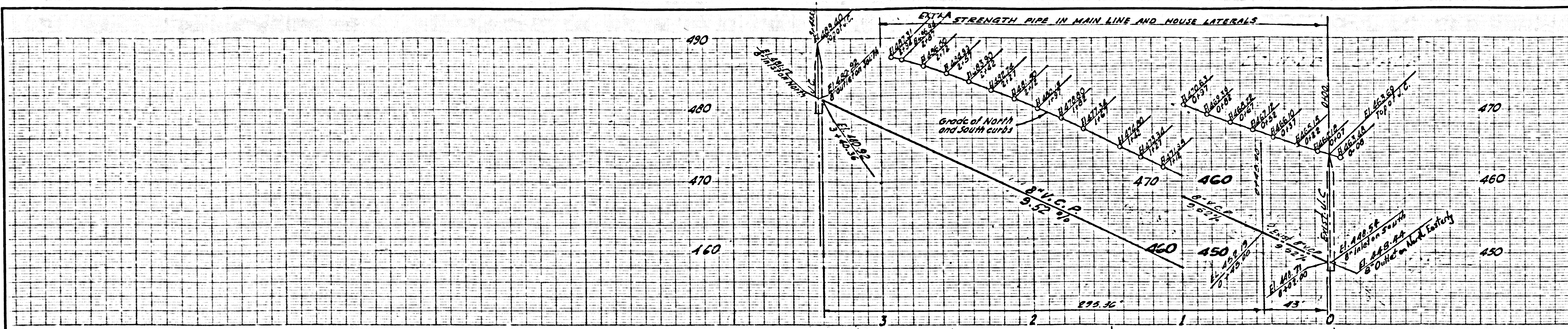


8" VCP 12.17%  
7.41' H. = 2  
4.2' S  
4.12' S 0.14' L.F.

NO CHARGE FOR CONNECTIONS

DOUBLE SCALE

30,010



NO CHARGE FOR CONNECTIONS

DOUBLE SCALE

30,011

