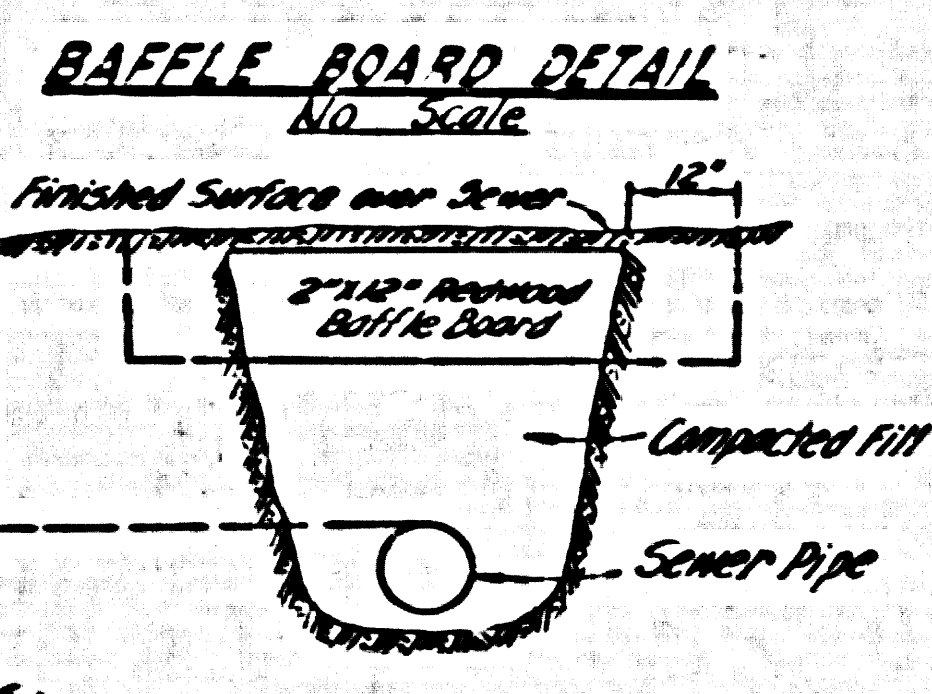
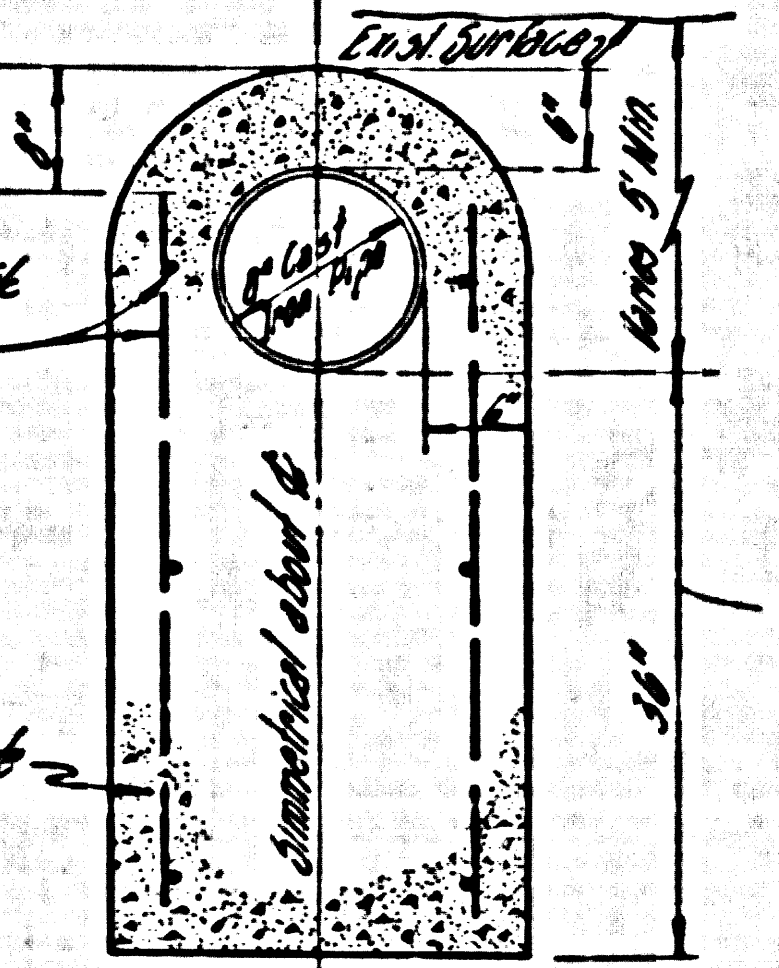
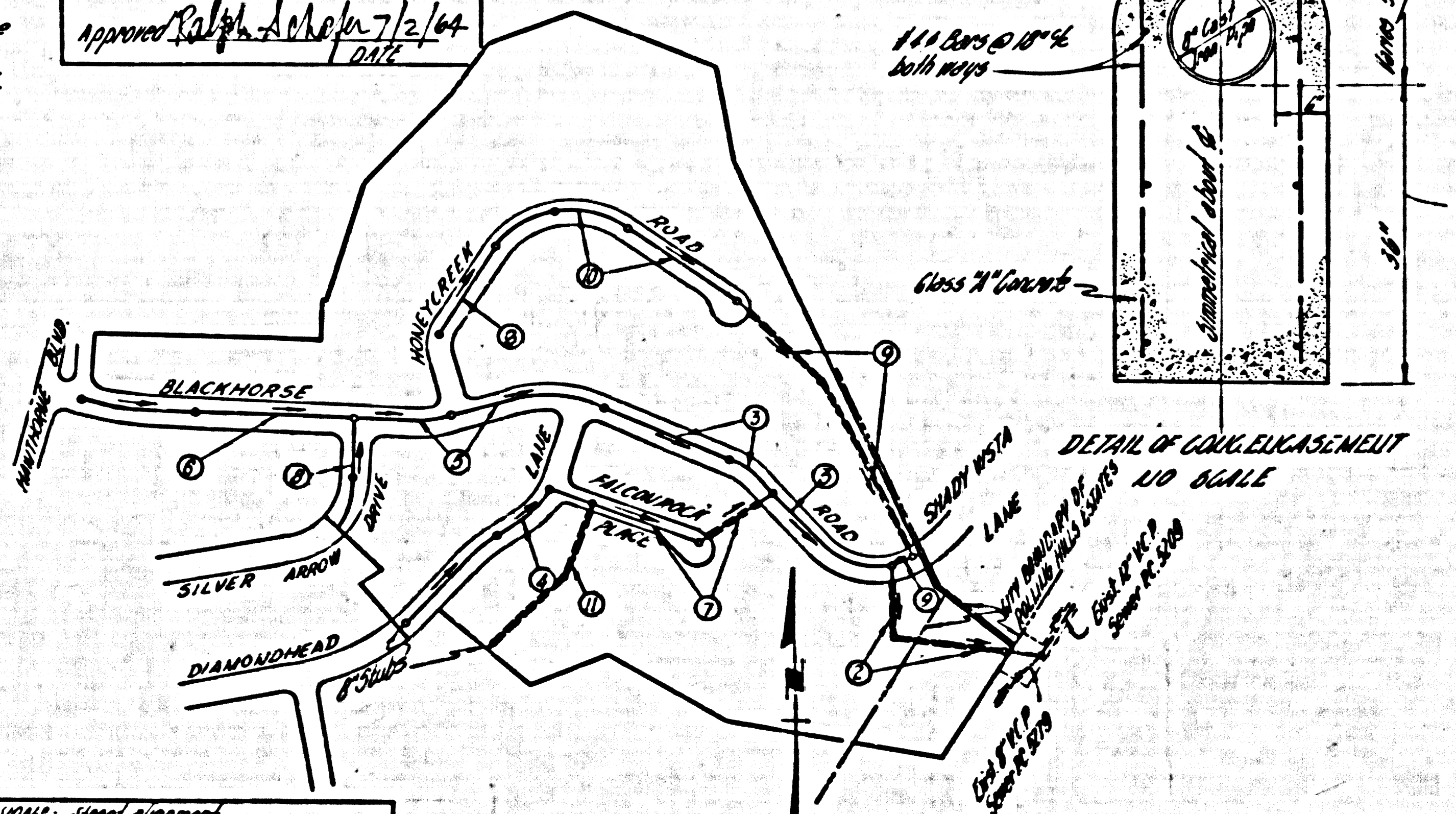


Branch Mark: C.S.M. 36-2 (U.S.C. & G.S.B. 110-201) (U.S. 117) ...

REVISIONS: Added 2 House laterals on south side of Diamondhead Road at Sta. 1117.2 ...



- NOTES: 1. Each end of baffle board will extend one foot ... 2. The upper layer of backfill to be one foot min. ...



REVISIONS: slight adjustment from Sta. 1133.41 to Sta. 1134.84 ...

INDEX MAP TRACT NO. 21352 P.C. 5533 SCALE 1"=300'

REVISIONS - Dec. 11, 1963 1. Page 2-4 - Changed grade of main line from Sta. 1126.00 to Sta. 1126.15 ...

DOUBLE SCALE LOMITA BLDG. DIST. NO. 12

PROFILE ALIGNMENT AND GRADE OF SANITARY SEWERS PAGE 1

TRACT NO 21352 PRIVATE CONTRACT NO. 5533

W.S. 27 6 SHEETS, 11 PAGES

SCALE: VERT. 1"=4' HORIZ. 1"=40'

ENGINEERING SERVICE CORPORATION

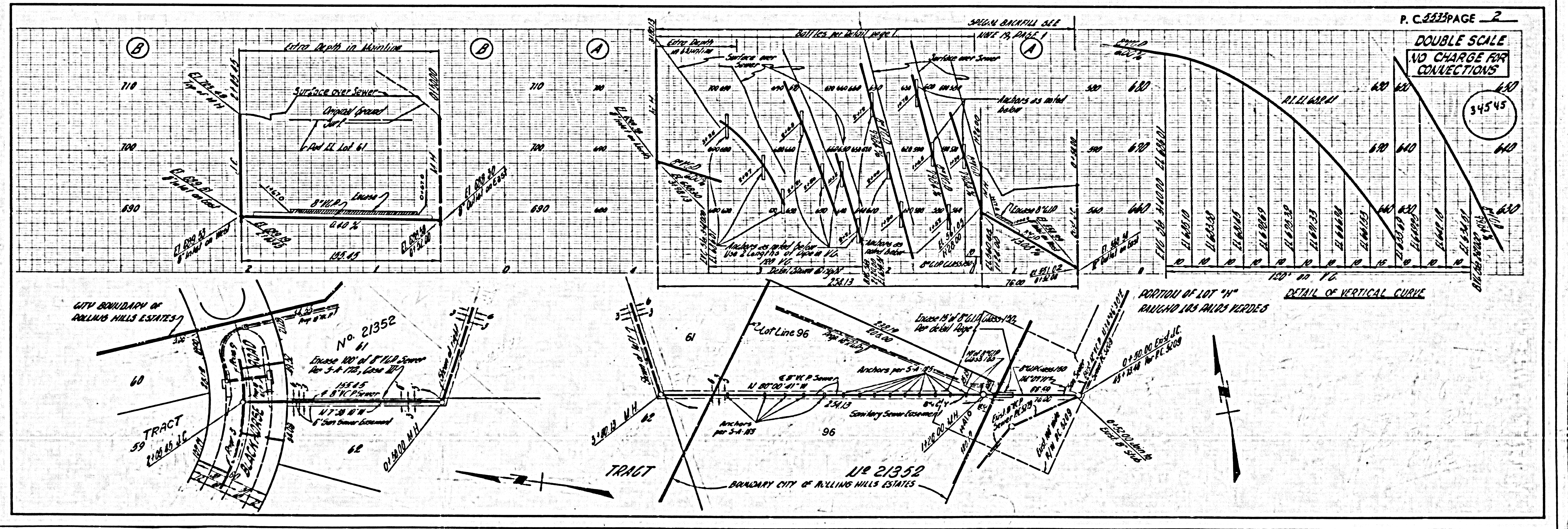
FOR LEGEND SEE PLAN NO. S-64

- NOTE: 1. PROVIDE STAKES ON THE PROPERTY LINE OR PROPERTY LINES PRODUCED AT RIGHT ANGLES TO THE SEWER LINE ... 2. NO REPRESENTATIVE OF THE COUNTY ENGINEER WILL SURVEY OR LAY OUT ANY PORTION OF THE WORK ...

COUNTY OF LOS ANGELES, CALIFORNIA JOHN A. LAMBIE, COUNTY ENGINEER J. D. PARKHURST, CHIEF ENGINEER

COLLECT CHARGES AS INDICATED Ralph Schafke

NO CONNECTIONS FOR THE DISPOSAL OF INDUSTRIAL WASTES SHALL BE MADE TO SEWERS SHOWN ON THESE DRAWINGS WITHOUT WRITTEN PERMISSION FROM THE CHIEF ENGINEER AND GENERAL MANAGER OF THE COUNTY SANITATION DISTRICTS.

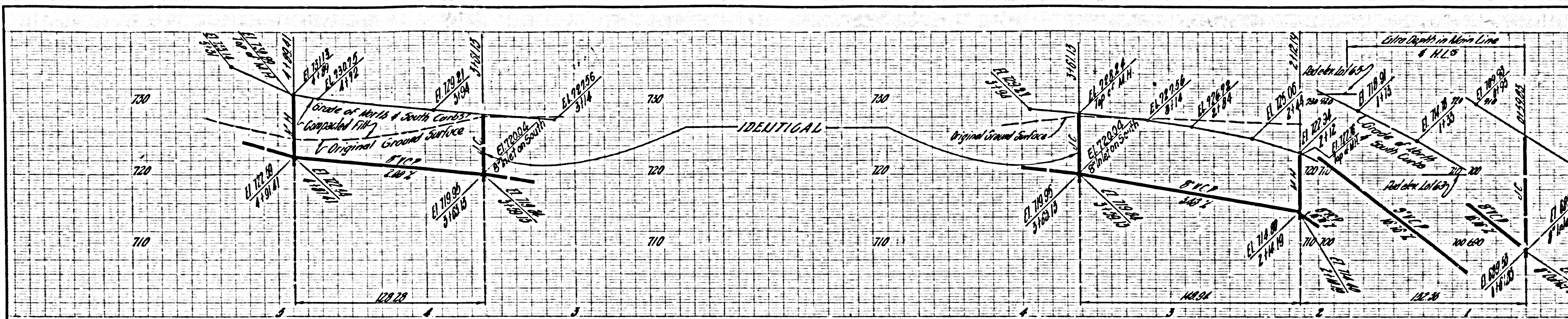


P.C. 5533 PAGE 2

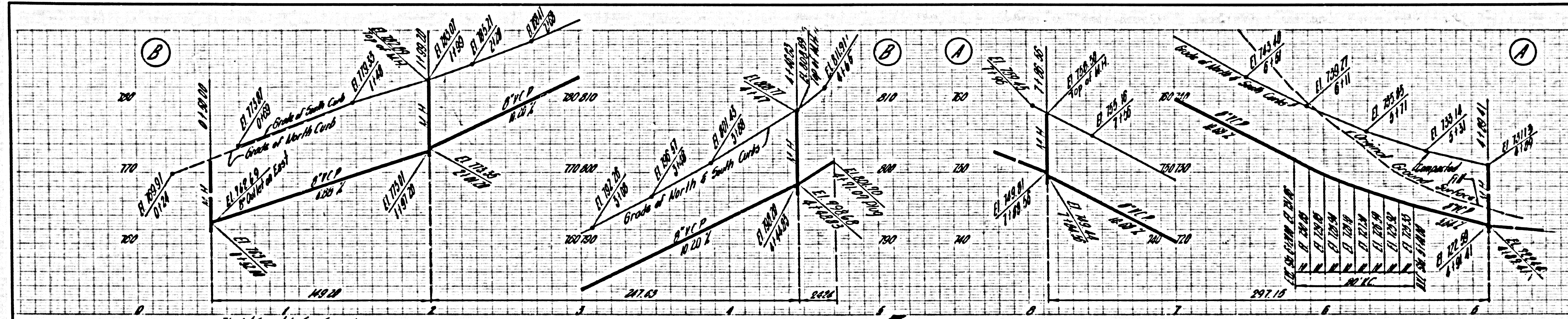
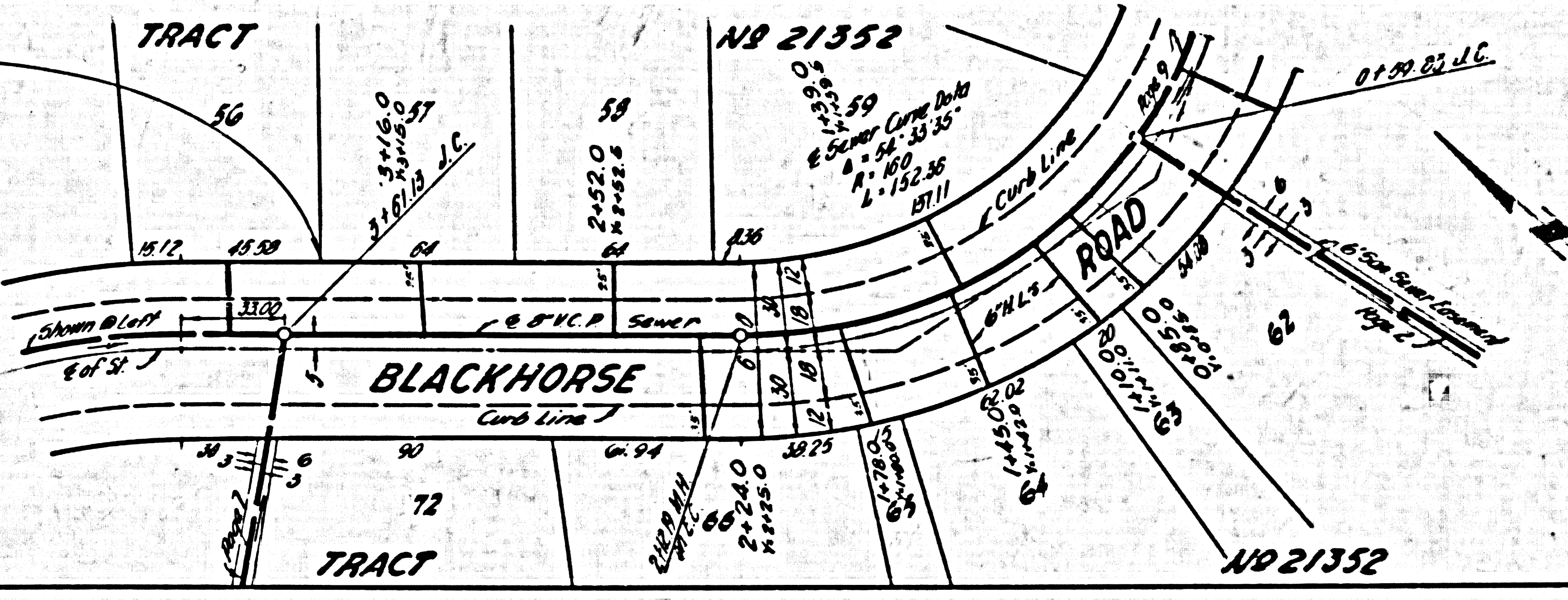
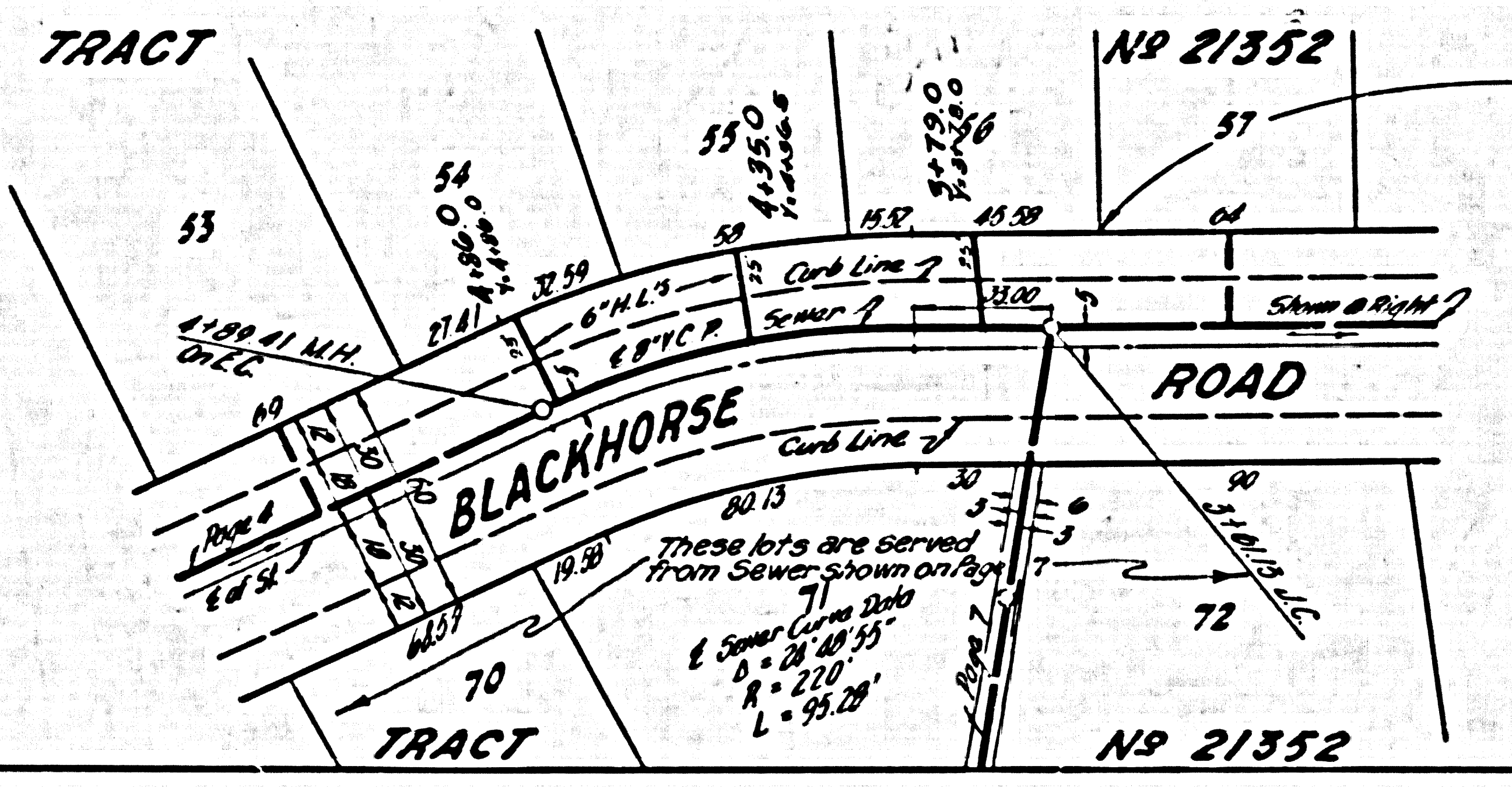
DOUBLE SCALE NO CHARGE FOR CONNECTIONS

34545

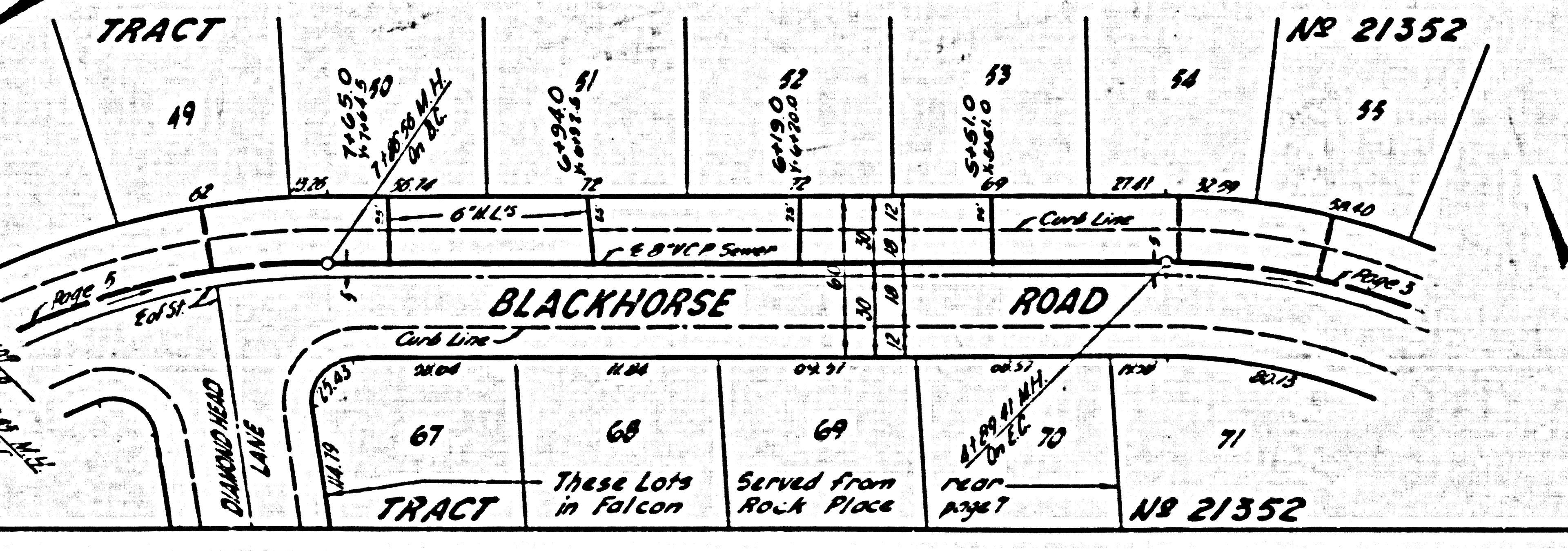
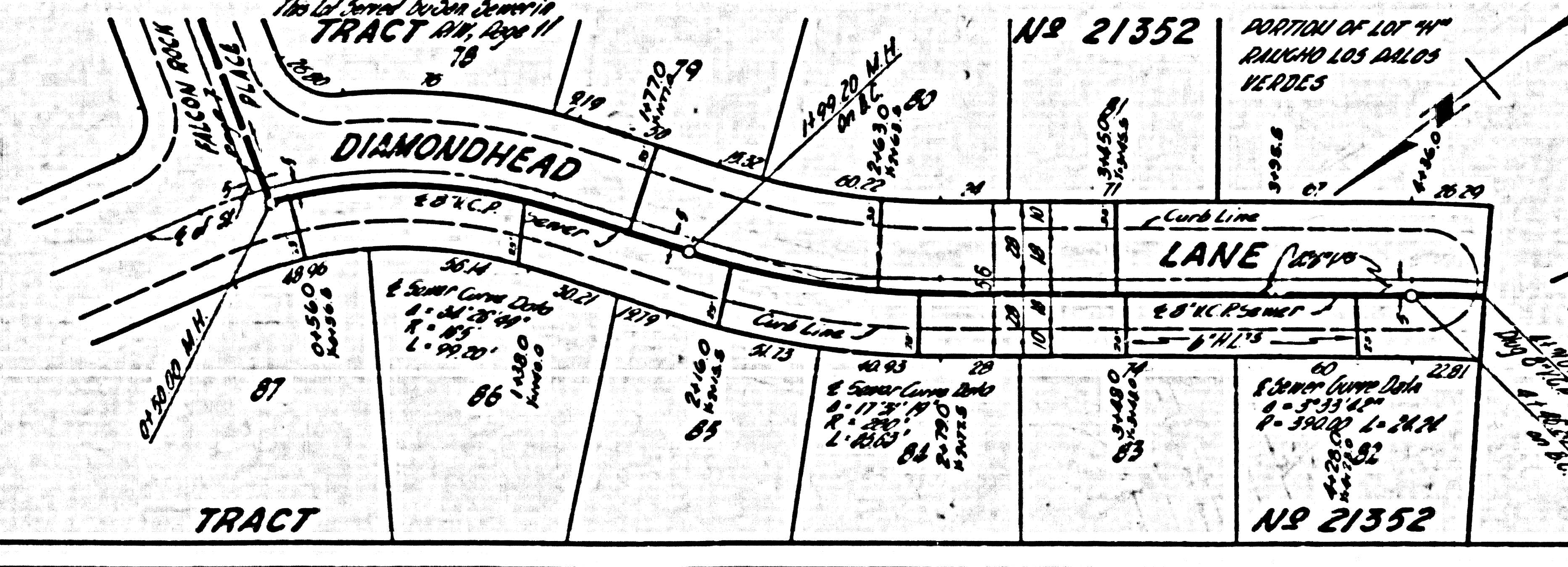




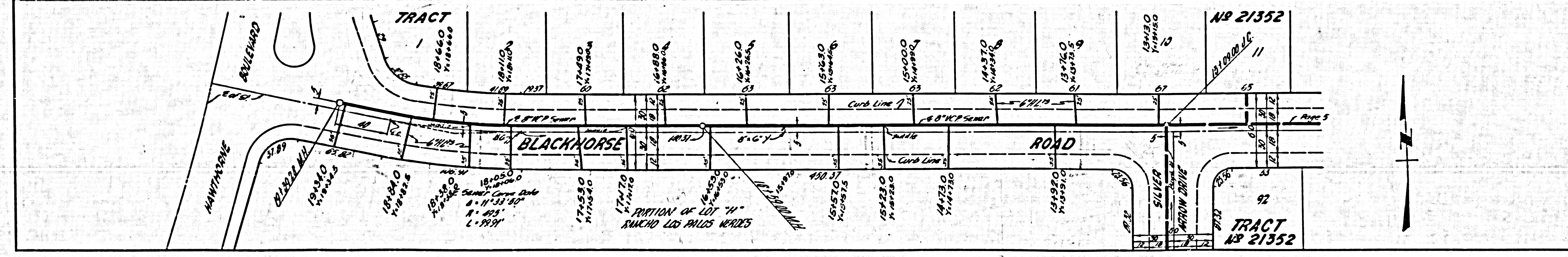
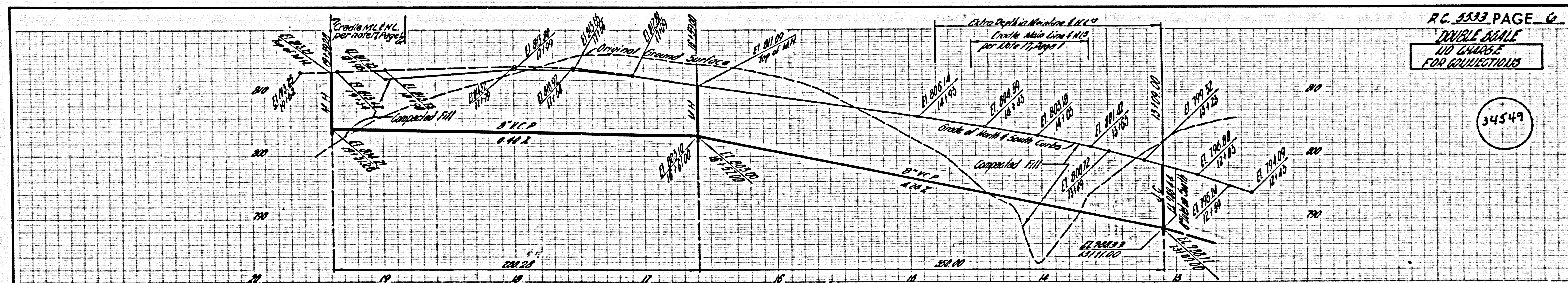
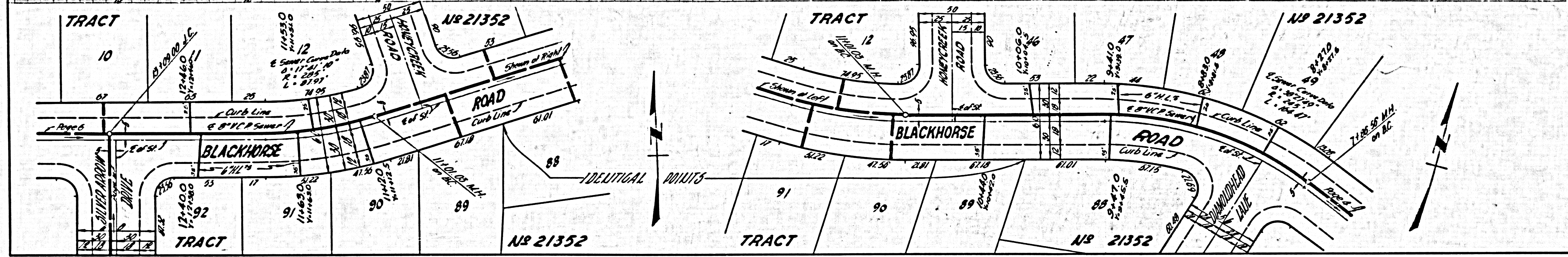
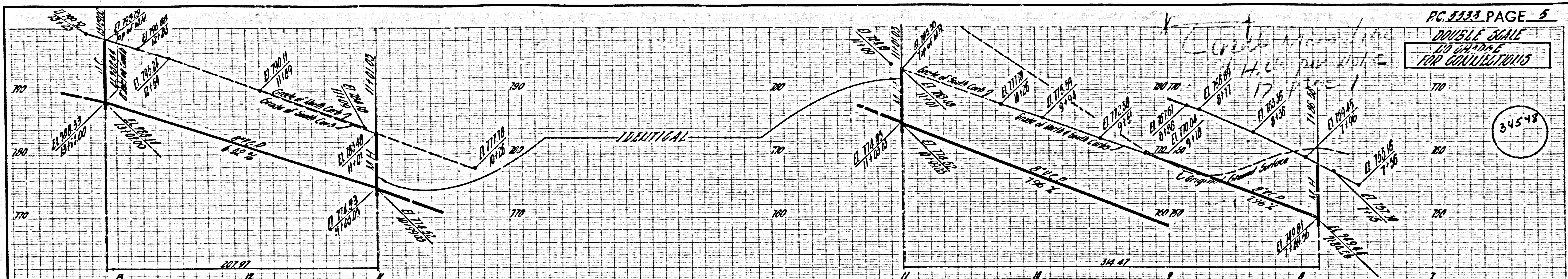
34546



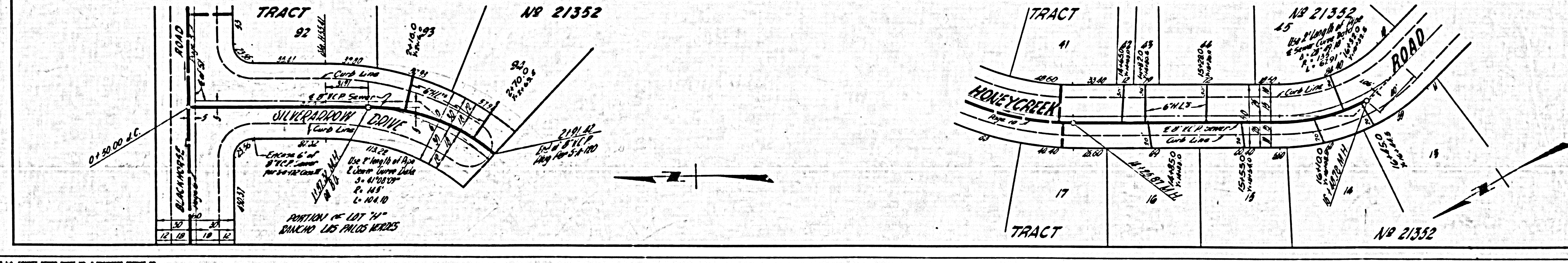
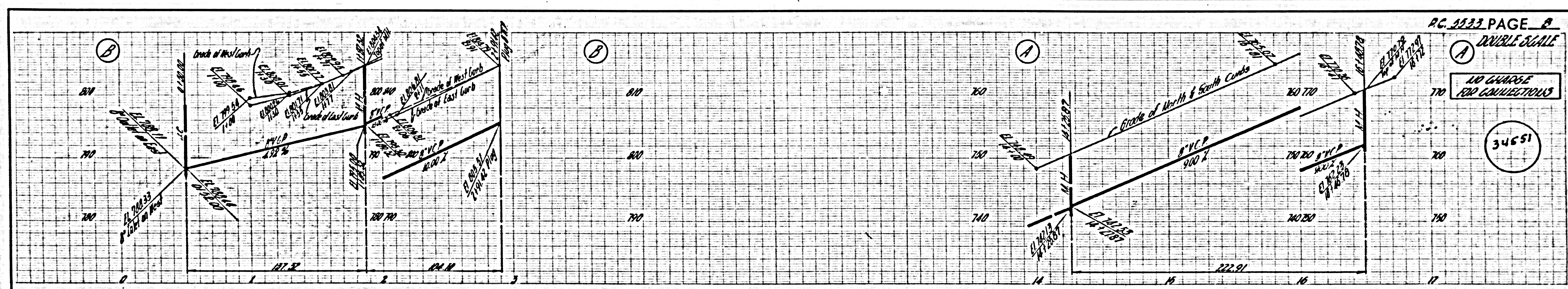
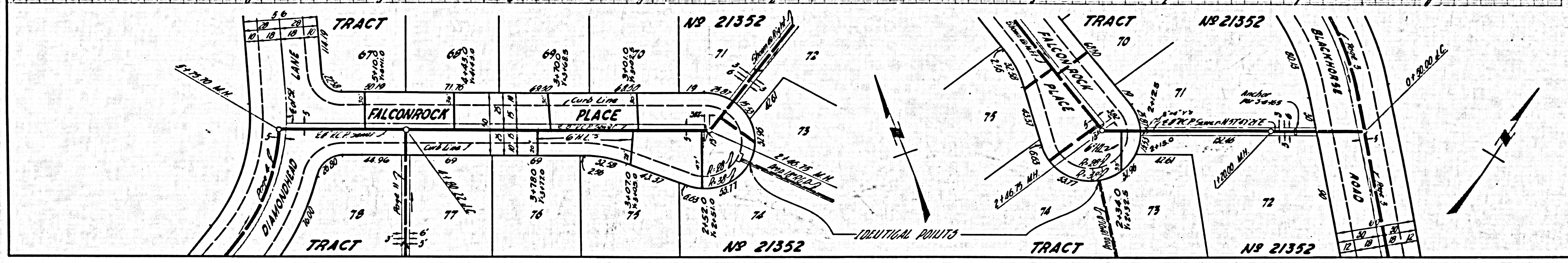
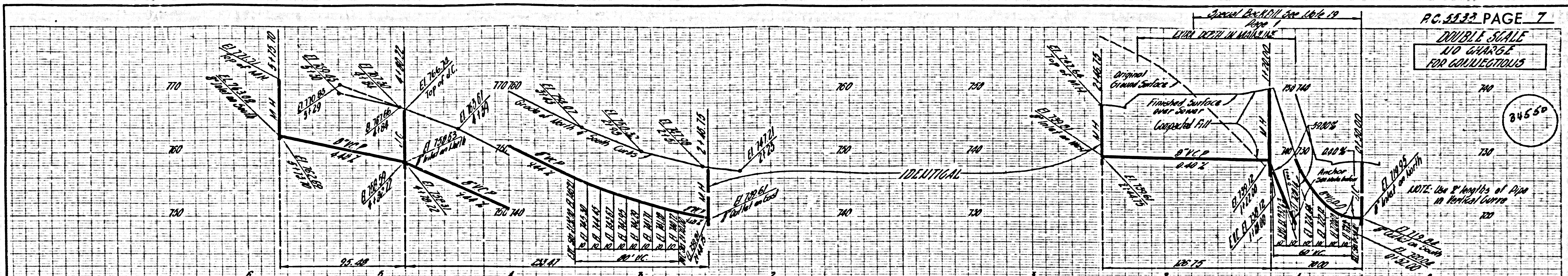
34547



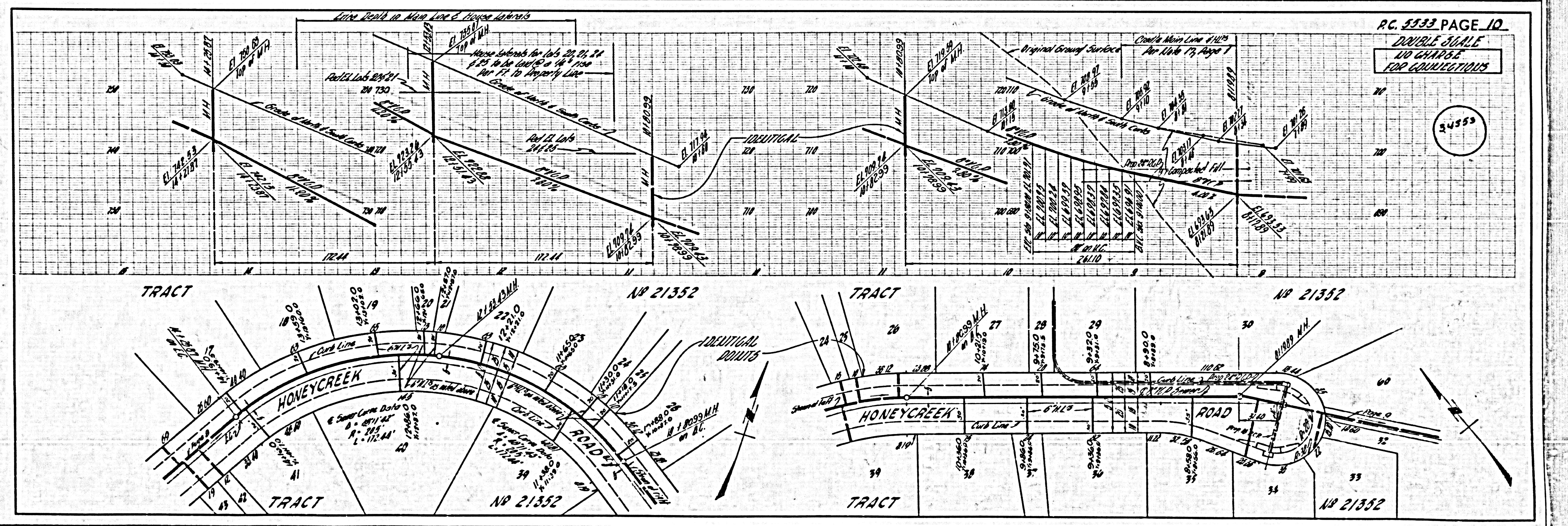
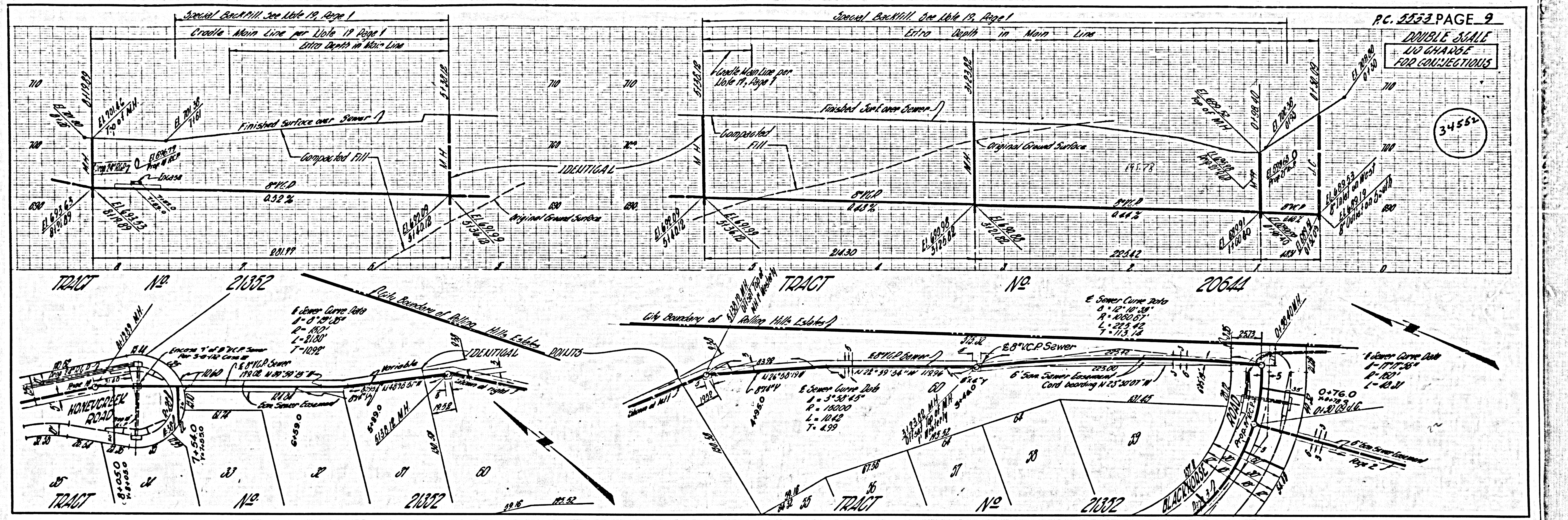














34354

