

CONNECTION CHARGES AS INDICATED
 7. 270 per line 8-24-60

BENCH MARK: SG 1616
 L.A. COUNTY SURVEY MON. 38-9-1954, RE 461
 6' INTERSECTION OF LOS ALTOS DRIVE 163' W.
 6' OF HACIENDA BLVD. F.B. 1359 1954 ADJ. EL.
 1' BASE LINE -1955) EL. 496.986

PUENTE BLDG. DIST. NO. 2

- NOTES:**
1. PROVIDE STAKES ON THE PROPERTY LINE OR PROPERTY LINES PRODUCED AT RIGHT ANGLES TO THE SEWER LINE AT THE CENTER LINE OF EACH MANHOLE.
 2. NO REPRESENTATIVE OF THE COUNTY ENGINEER WILL SURVEY OR LAY OUT ANY PORTION OF THE WORK.
 3. THE OWNER OR HIS AUTHORIZED REPRESENTATIVE SHALL FURNISH THE COUNTY ENGINEER WITH GRADE SHEETS AND STATIONING FOR ALL HOUSE LATERALS AND Y BRANCHES AND Y BRANCHES SHALL PROVIDE STAKES FOR THEM AT THEIR PROPER LOCATIONS WITH STATIONINGS PLAINLY MARKED. ANY CHANGE IN LOCATION SHALL BE REQUESTED IN WRITING BY THE OWNER OR HIS REPRESENTATIVE.
 4. THE PRIVATE ENGINEER SHALL FURNISH THE HOUSE LATERAL DEPTH AT THE PROPERTY LINE BELOW THE TOP OF CURB ELEVATION FOR EACH HOUSE LATERAL ON THE GRADE SHEET.
 5. NO REVISIONS SHALL BE MADE IN THESE PLANS WITHOUT THE APPROVAL OF THE COUNTY ENGINEER.
 6. USE STANDARD MANHOLE FRAMES AND COVERS, S-117.
 7. USE STANDARD STRENGTH PIPE EXCEPT AS NOTED.
 8. USE CEMENT MORTAR OR "WEDGE-LOCK" OR "SPREAD-SEAL" FOR ALL V.C.P. JOINTS PER SPEC'S, SECS. 16 & 17.
 9. RESURFACE ALL TRENCH WITHIN PAVED AREA TO MEET L.A. COUNTY ROAD DEPT. OR CALIF. STATE HIGHWAY REQUIREMENTS IN ACCORDANCE WITH PERMITS.
 10. ENCASE FOUR FEET OF SEWER AT POINTS OF INTERFERENCE WITH POLES, CASE III, S-172.
 11. HOUSE LATERALS TO BE CONSTRUCTED WITH INVERTS AT PROPERTY LINE... FEET BELOW CURB GRADE "ICEET" AS NOTED.
 12. ALL STRUCTURES SHALL BE BRICK SEWER STRUCTURES, S-104.
 13. FOR ALLOWABLE LEAKAGE TEST USE FORMULA NO. 1, SPEC'S, SEC. 14.
 14. MANHOLE TOPS IN UNIMPROVED RIGHTS-OF-WAY TO BE SIX INCHES ABOVE FINISHED GRADE.
 15. THE CONTRACTOR SHALL NOTIFY THE CONSTRUCTION DIVISION BY TELEPHONE, MADISON 9-471, EXT. 898 AT LEAST TWENTY-FOUR HOURS BEFORE STARTING ANY WORK UNDER THIS CONTRACT.
 16. STANDARD SPECIFICATIONS DATED JAN. 1, 1960 WILL APPLY IN THE CONSTRUCTION OF THIS PROJECT.

PROFILE ALIGNMENT AND GRADE OF **P.C. 5540**
SANITARY SEWERS PAGE 1
 TO BE CONSTRUCTED IN **J.N. 0353.63**

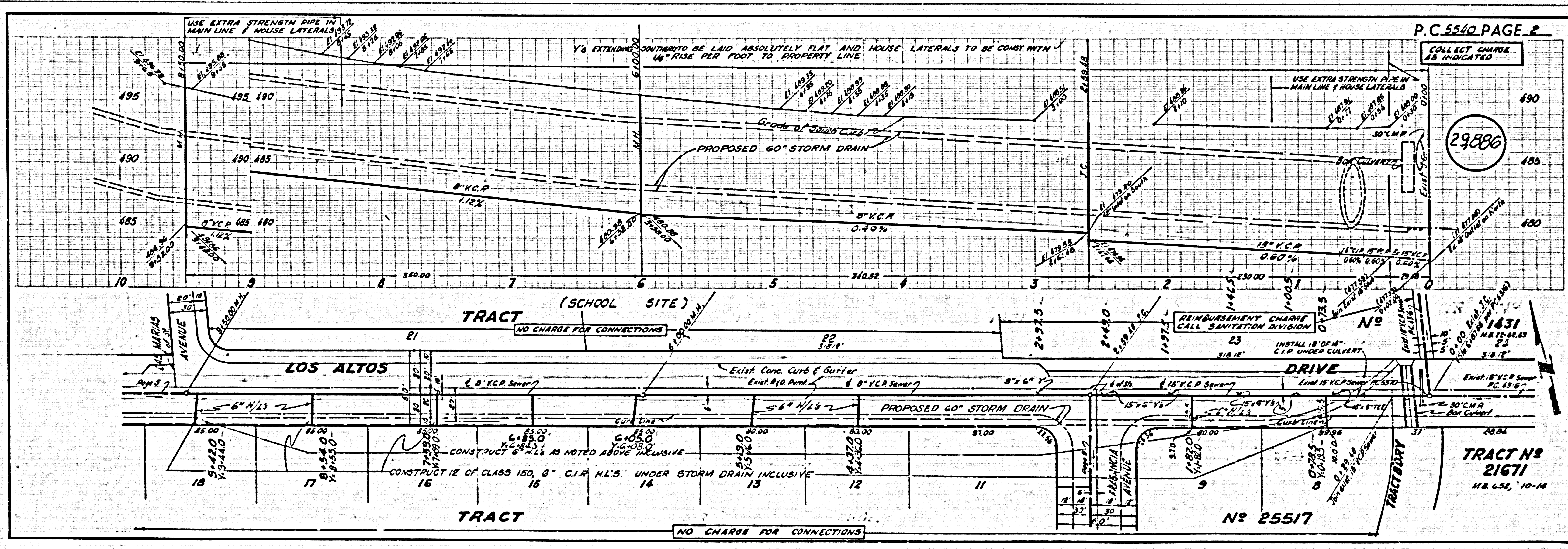
TRACT No 25517
PRIVATE CONTRACT NO. 5540

W.S. 38
 6 SHEETS; 11 PAGES
 SCALE: VERT. 1" = 4' AUGUST 1960
 HORIZ. 1" = 40'
 PREPARED IN THE OFFICES OF
MOORE, TRINGLE & NELSON
 13784 HUNTINGTON BEACH BLVD.
 HUNTINGTON BEACH, CALIFORNIA
 BY: **C.P. Nelson**
 REG. C. E. NO. 8781

29885

NOTE:
 GRADES TO WHICH THIS IMPROVEMENT IS TO BE CONSTRUCTED ARE SHOWN ON PLANS AND PROFILES. GRADE POINTS FOR TOP OF CURB, CENTER LINE OF STREETS OR CENTER LINE OF ALLEYS ARE SHOWN BY CIRCLES OR TRIANGLES AT ALL POINTS BETWEEN DESIGNATED POINTS THE GRADE SHALL BE ESTABLISHED SO AS TO CONFORM TO A STRAIGHT LINE DRAWN BETWEEN SAID DESIGNATED POINTS.
 ELEVATIONS ARE IN FEET ABOVE U.S.C. & G.S. SEA LEVEL, DATUM OF 1929.
 THIS DRAWING AND THE DATA HEREON ARE HEREBY MADE A PART OF THE SPECIFICATIONS.
 WORK SHALL BE CONSTRUCTED ACCORDING TO SPECIFICATIONS ON FILE IN THE OFFICE OF THE COUNTY ENGINEER AND SHALL BE PROSECUTED ONLY IN THE PRESENCE OF THE COUNTY ENGINEER.
 BEFORE WORK CAN BE STARTED, THE CONTRACTOR MUST OBTAIN A PERMIT TO EXCAVATE IN COUNTY STREETS FROM THE L.A. COUNTY ROAD DEPT., DISTRICT OFFICE NO. 1 AND PAY A FEE TO THE COUNTY ENGINEER'S ROOM SIX FIVE AMERICAN BUILDING, 343 SO. BROADWAY HUNTINGTON BEACH TO COVER THE COST OF CONSTRUCTION INSPECTION AND RECORD PLANS.
 APPROVAL OF THIS PLAN BY THE COUNTY OF LOS ANGELES DOES NOT CONSTITUTE A REPRESENTATION AS TO THE ACCURACY OF THE LOCATION OR THE EXISTENCE OR NON-EXISTENCE OF ANY UNDERGROUND UTILITY PIPE, OR STRUCTURE WITHIN THE LIMITS OF THIS PROJECT. THIS NOTE APPLIES TO ALL SHEETS.
 IF WORK IS TO BE DONE IN A STATE HIGHWAY, A PERMIT MUST BE OBTAINED FROM THE STATE OF CALIFORNIA, DIVISION OF HIGHWAYS, 120 SOUTH SPRING STREET.

COUNTY OF LOS ANGELES, CALIFORNIA
 APPROVED, **JOHN A. LAMBIE**, COUNTY ENGINEER
 APPROVED, **C.R. COMPTON**, CHIEF ENGINEER
 CP. SAN. DIST. NO. 81
 BY: **C.P. Nelson** ASST. SANITATION ENGINEER
 BY: **E.P. Kinnard** OFFICE ENGINEER
 CHECKED BY: **C.F. Hovick** 9-2-60
 OFFICE OF COUNTY ENGINEER, Rm. C. E. NO. 11636



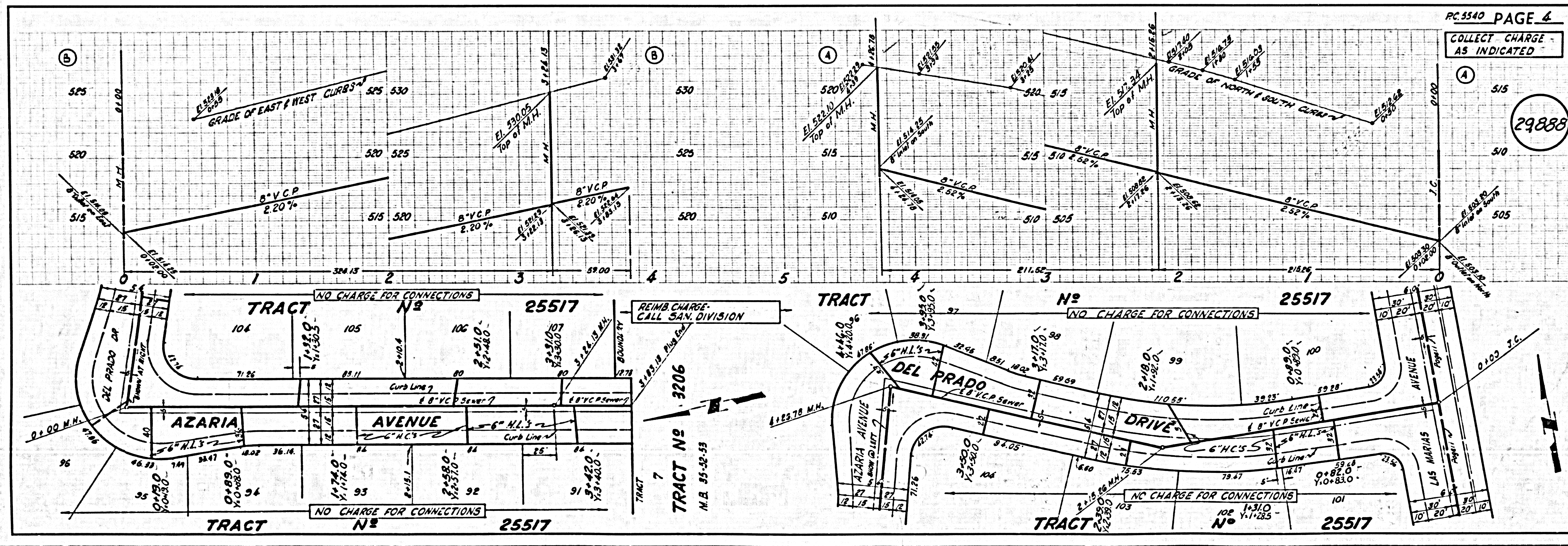
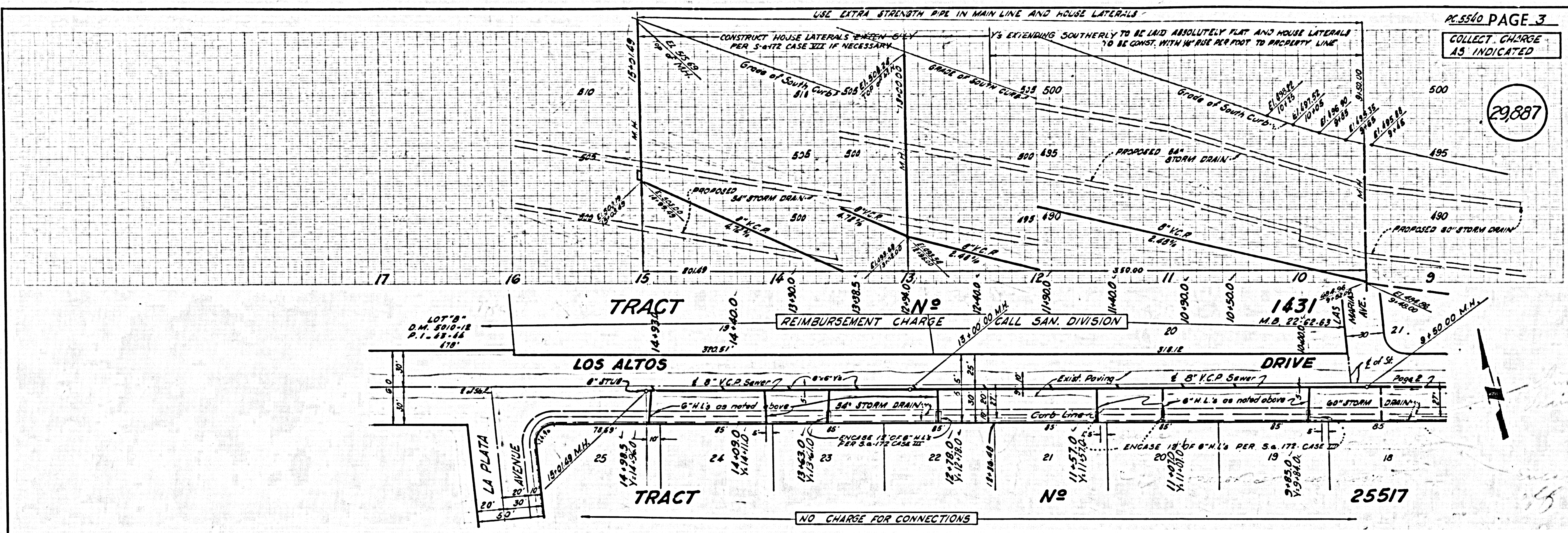
P.C. 5540 PAGE 2

COLLECT CHARGE AS INDICATED

29886

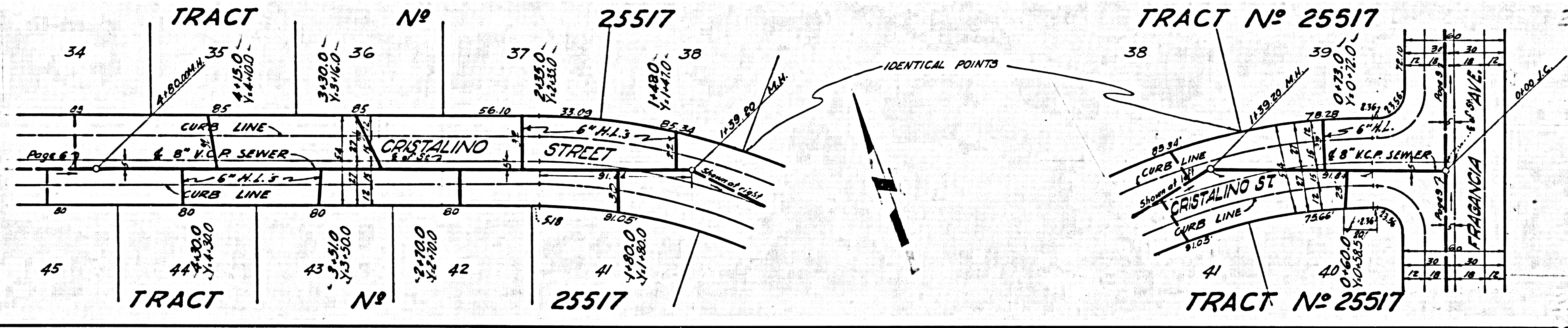
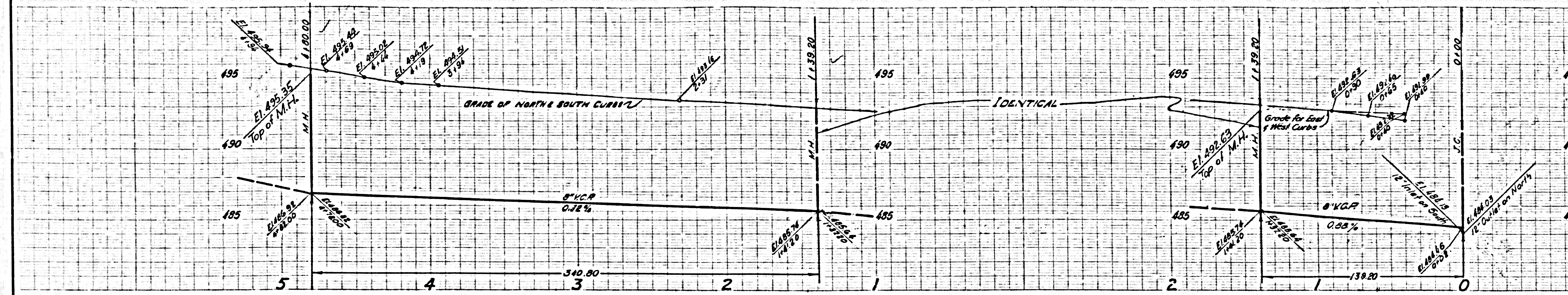
1431
 N.B. 12-22-63
 P.C. 5540
 N.B. 10-10-63

TRACT No 21671
 N.B. 652, 10-14



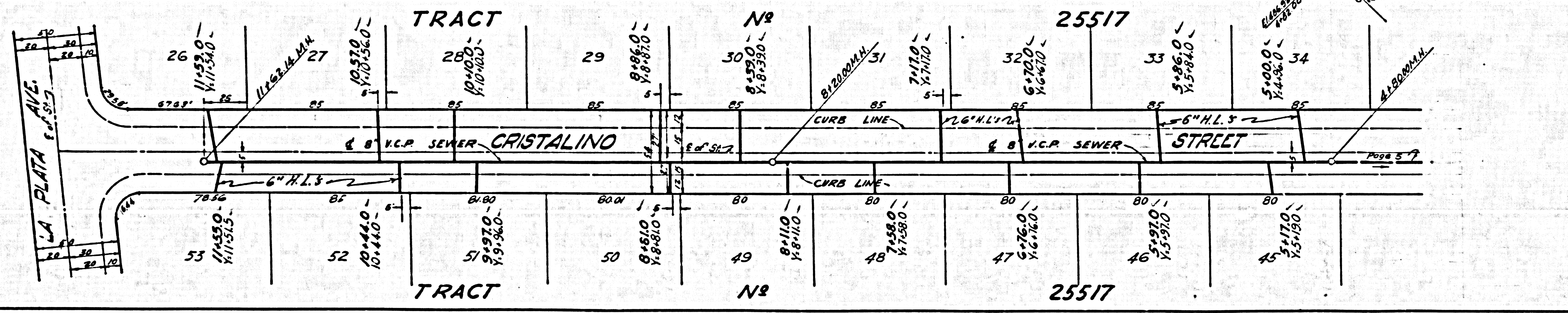
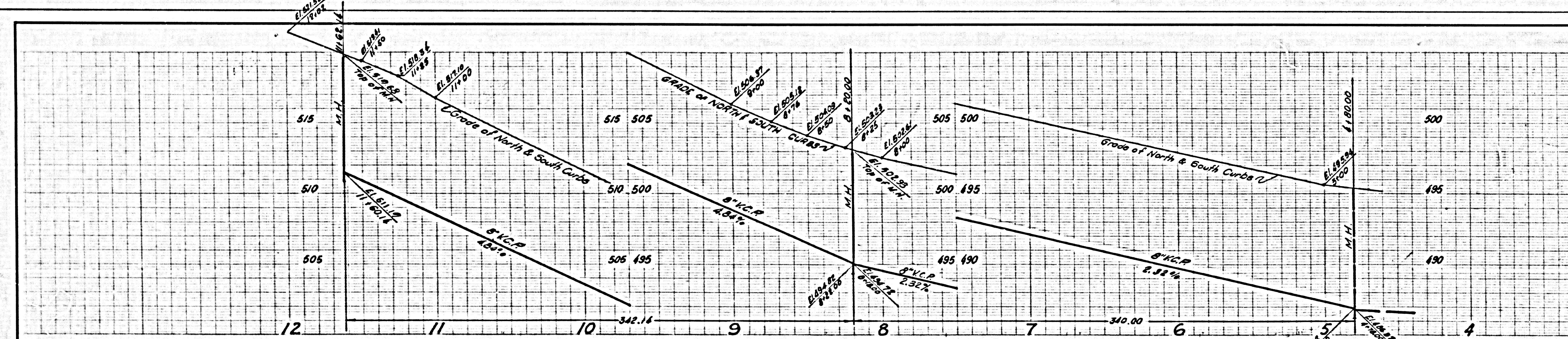
NO CHARGE FOR CONNECTIONS

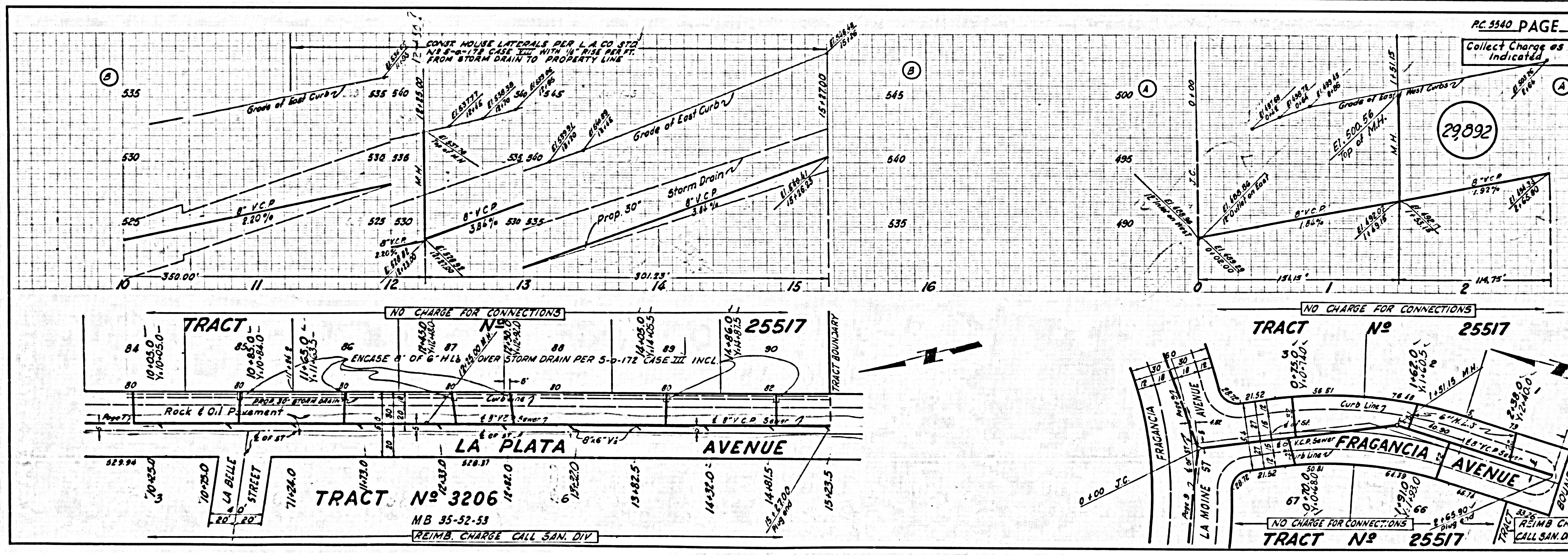
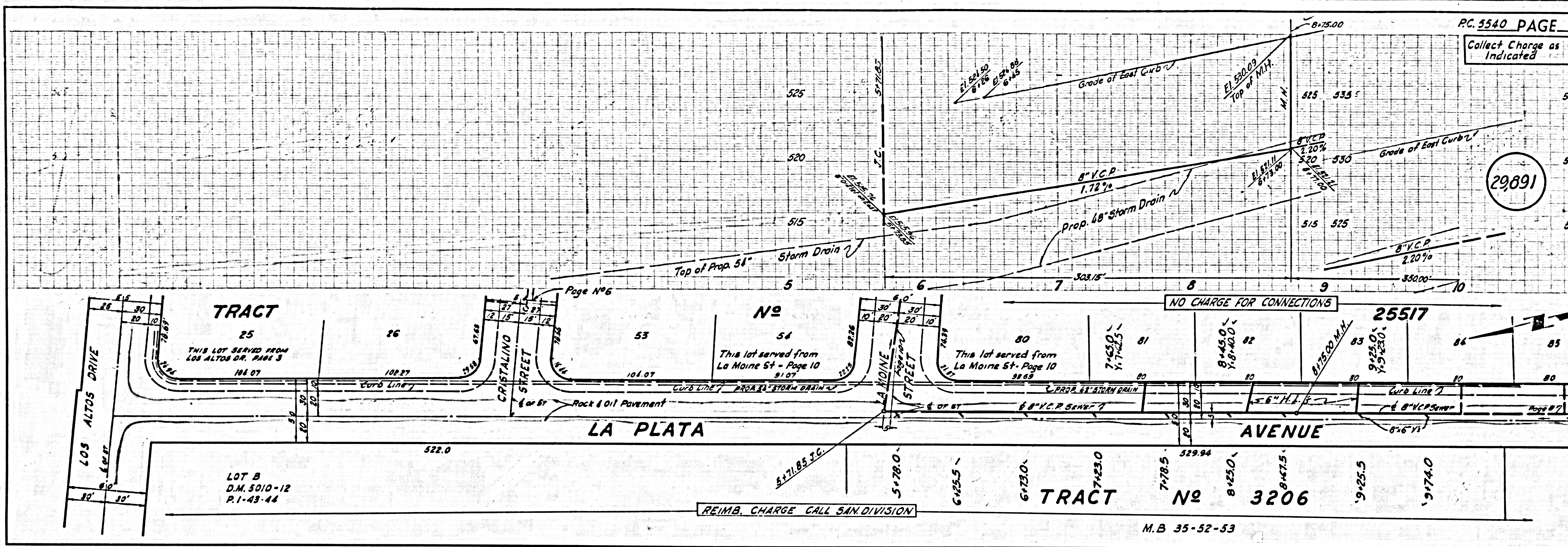
29,889

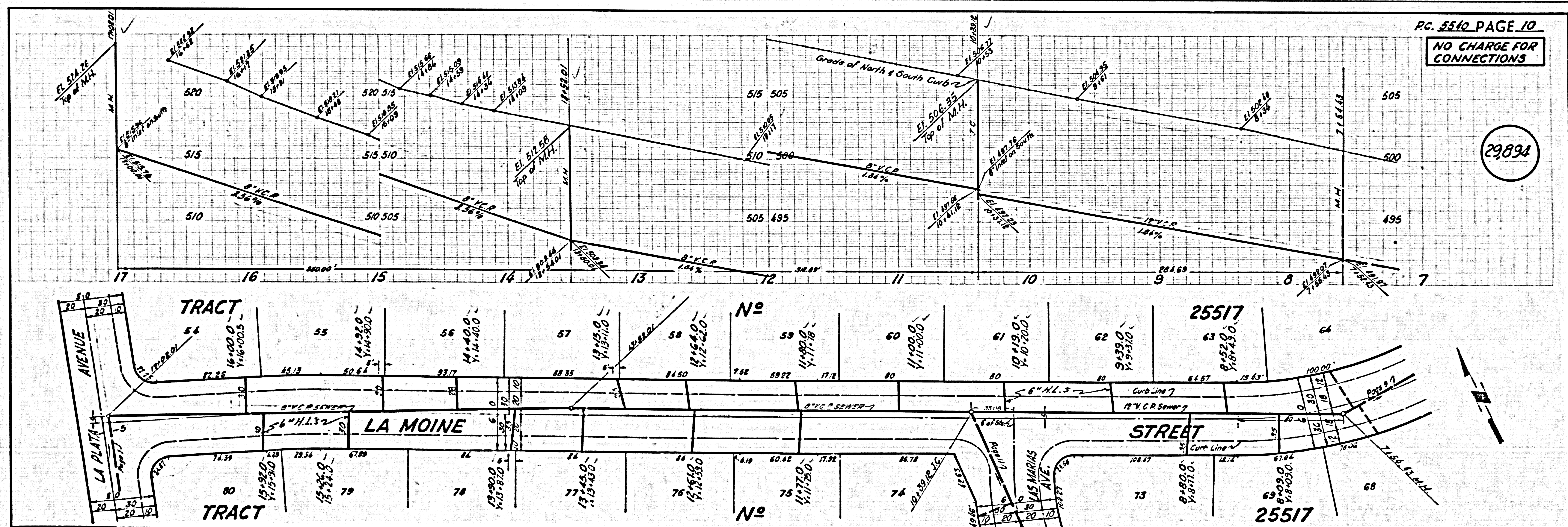
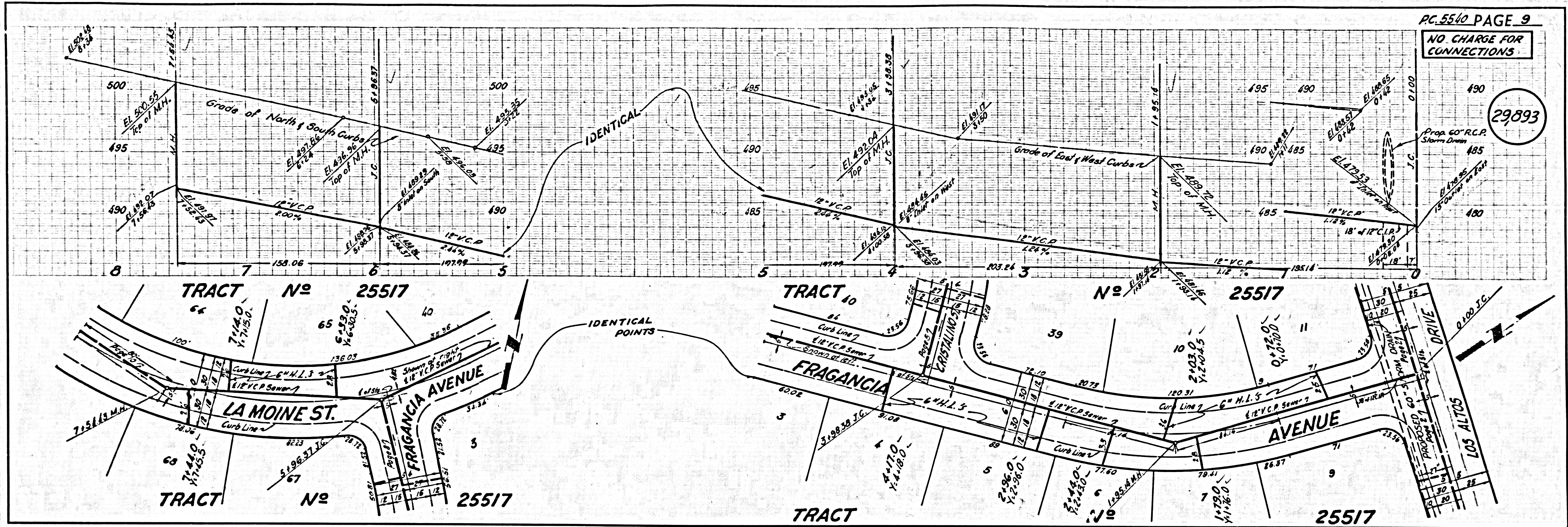


NO CHARGE FOR CONNECTIONS

29,890







TRACT No 25517 BC 2210

Collect charge as indicated

29895

