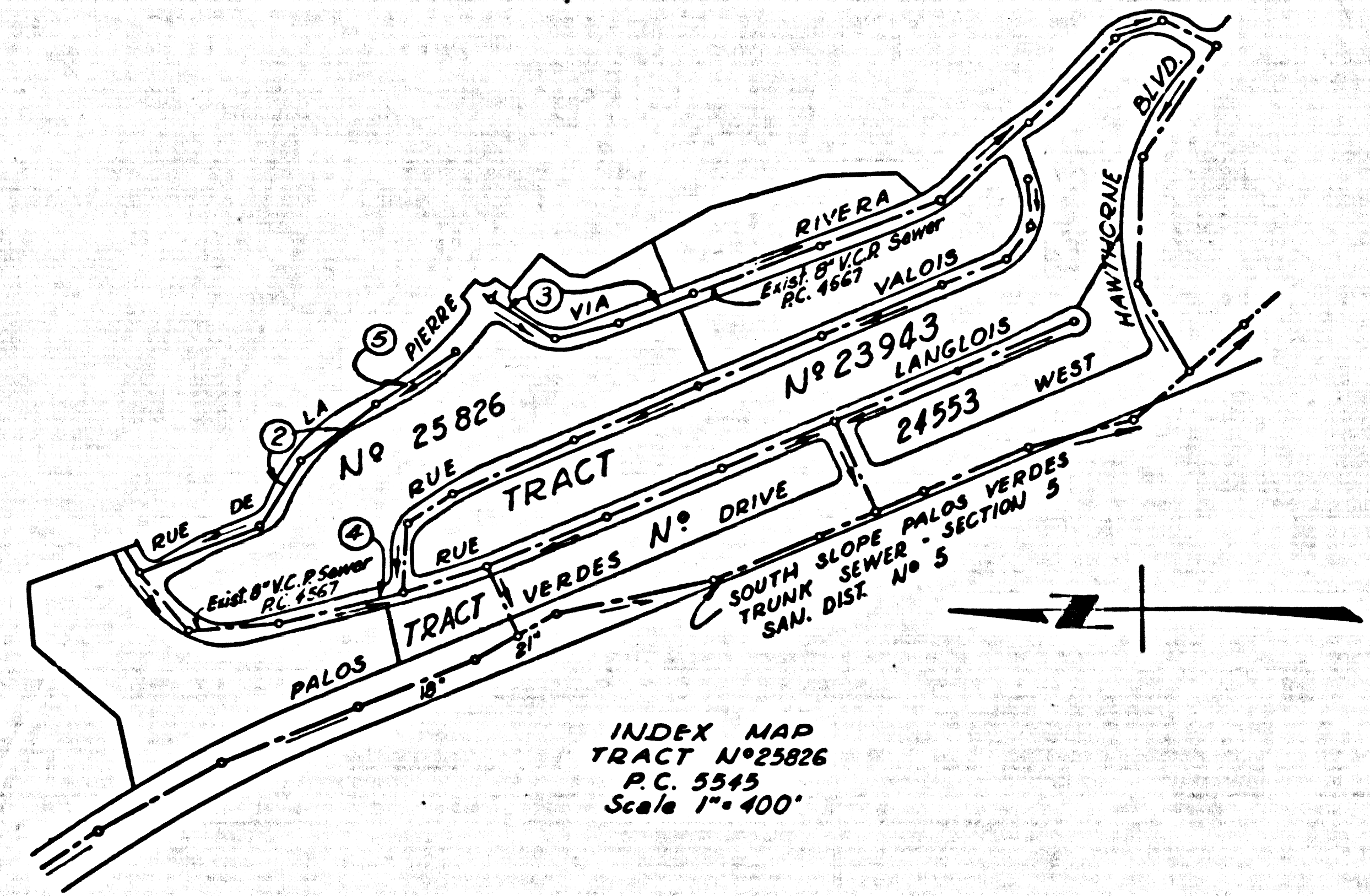


3.M. Palos Verdes Drive West
 1 Mile N. Point Vicente Lighthouse
 46 Feet West of Drive of N. Cluster
 of 9 Eucalyptus Trees
 Std. C.S. Man. Slamped B.M. 34-28-1954
 Adj. Elev. = 247.621

NO CHARGE FOR
 CONNECTIONS
L. Cantor 8-25-60



DOUBLE SCALE
 LOMITA BLDG. DIST. NO. 7.1

PROFILE ALIGNMENT AND GRADE OF P.C. 5545
 SANITARY SEWERS PAGE 1
 TO BE CONSTRUCTED IN J.W. 0353.66

TRACT No. 25826
 PRIVATE CONTRACT NO. 5545

W.S. 27
 9 SHEETS, 5 PAGES

SCALE: VERT. 1"=4' HORIZ. 1"=40'

AUGUST, 1960
 PREPARED IN THE OFFICES OF

ENGINEERING SERVICE CORPORATION

BY *C. J. Kenny*
 REG. C. E. NO. 182

FOR LEGEND SEE PLAN NO. S-A-64

29880

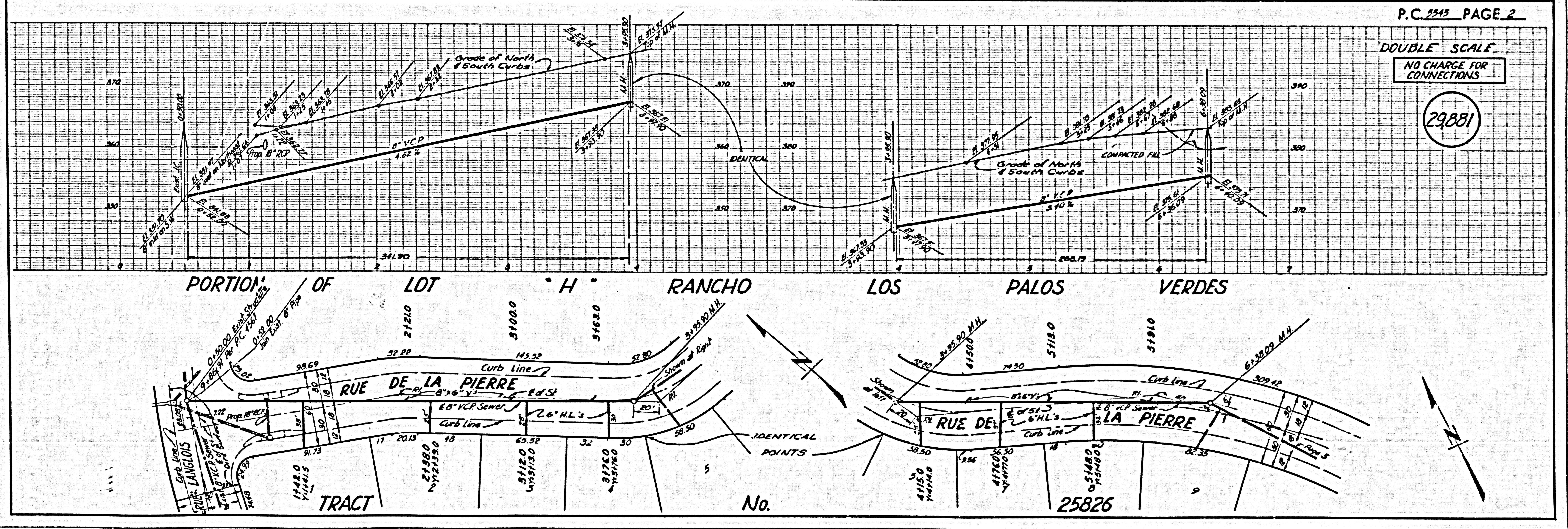
- NOTES:
- PROVIDE STAKES ON THE PROPERTY LINE OR PROPERTY LINES PRODUCED AT RIGHT ANGLES TO THE SEWER LINE AT THE CENTER LINE OF EACH MANHOLE.
 - NO REPRESENTATIVE OF THE COUNTY ENGINEER WILL SURVEY OR LAY OUT ANY PORTION OF THE WORK.
 - THE OWNER OR HIS AUTHORIZED REPRESENTATIVE SHALL FURNISH THE COUNTY ENGINEER WITH GRADE SHEETS AND STATIONING FOR ALL HOUSE LATERALS AND Y BRANCHES AND SHALL PROVIDE STAKES FOR THEM AT THEIR PROPER LOCATIONS WITH STATIONING PLAINLY MARKED. ANY CHANGE IN LOCATION SHALL BE REQUESTED IN WRITING BY THE OWNER OR HIS REPRESENTATIVE.
 - THE PRIVATE ENGINEER SHALL FURNISH THE HOUSE LATERAL DEPTH AT THE PROPERTY LINE BELOW THE TOP OF CURB ELEVATION FOR EACH HOUSE LATERAL ON THE GRADE SHEET.
 - NO REVISIONS SHALL BE MADE IN THESE PLANS WITHOUT THE APPROVAL OF THE COUNTY ENGINEER.
 - USE STANDARD MANHOLE FRAMES AND COVERS, S-117.
 - USE STANDARD STRENGTH PIPE EXCEPT AS NOTED.
 - USE "WEDGE LOCK" OR "SPED-SEAL" FOR ALL V.C.P. JOINTS PER S.P.C.S., SECS. 26 & 40.
 - RESURFACE ALL TRENCH WITHIN PAVED AREA TO MEET L.A. COUNTY ROAD DEPT. OR CALIF. STATE HIGHWAY REQUIREMENTS IN ACCORDANCE WITH PERMITS.
 - INCASE FOUR FEET OF SEWER AT POINTS OF INTERFERENCE WITH POLES, CABLE W. S-172.
 - HOUSE LATERALS TO BE CONSTRUCTED WITH INVERTS AT PROPERTY LINE... 6" FEET BELOW CURB GRADE.
 - ALL STRUCTURES SHALL BE BRICK SEWER STRUCTURES, S-114.
 - FOR ALLOWABLE LEAKAGE TEST USE FORMULA NO. 1, S.P.C.S., SEC. 24.
 - MANHOLE TOPS IN UNIMPROVED RIGHTS-OF-WAY TO BE SIX INCHES ABOVE FINISHED GRADE.
 - THE CONTRACTOR SHALL NOTIFY THE COUNTY ENGINEER AND STATE DEPARTMENT OF TELEPHONE, MADISON 9-57, EXT. 2057 AT LEAST TWENTY-FOUR HOURS BEFORE STARTING ANY WORK UNDER THE CONTRACT.
 - (a) No Construction Will Be Permitted In Filled Area Unless Acceptable Certification is Submitted to the Construction Division of the County Engineer Dept. that relative compaction is greater than 80%
 (b) If compaction is less than 80% the owner must be credited as shown on the plans S-A-66
 (c) If compaction is greater than 80% crediting and special M.H. bases are not required however, joint compound must be substituted for cement mortar in all joints in filled areas.

ENGINEERING SERVICE CORPORATION 1127 W. WASHINGTON BLVD. LOS ANGELES 15, CALIF. RI. 9-7281	
REVISIONS	TRACED BY <i>M.M.</i>
	DES'G'D BY <i>C.D.</i>
	CK'D BY <i>J.R.R.</i>
	SUBMITTED <i>M.S.</i>
SUB STRUCTURES OK'D	
W. O. NO.	DWG. NO.
6681-160	8-50
DATE	SCALE
	As Shown
L.B.	P.E.

NOTE:
 ELEVATIONS ARE IN FEET ABOVE U.S.C. & G.S. SEA LEVEL DATUM OF 1929
 THIS DRAWING AND THE DATA HEREON ARE HEREBY MADE A PART OF THE SPECIFICATIONS
 WORK SHALL BE CONSTRUCTED ACCORDING TO SPECIFICATIONS ON FILE IN THE OFFICE OF THE COUNTY ENGINEER AND SHALL BE INSPECTED ONLY IN THE PRESENCE OF THE COUNTY ENGINEER
 BEFORE WORK CAN BE STARTED, THE CONTRACTOR MUST OBTAIN A PERMIT TO EXCAVATE IN COUNTY STREETS FROM THE L.A. COUNTY ROAD DEPT., DISTRICT OFFICE NO. 5 AND PAY TO THE COUNTY ENGINEER, ROOM 124 SAN AMERICAN BUILDING, 128 SO. BROADWAY SUFFICIENT TO COVER THE COST OF CONSTRUCTION INSPECTION AND RECORD PLANS.
 APPROVAL OF THIS PLAN BY THE COUNTY OF LOS ANGELES DOES NOT CONSTITUTE A REPRESENTATION AS TO THE ACCURACY OF THE LOCATION OF OR THE EXISTENCE OR NON-EXISTENCE OF ANY UNDERGROUND UTILITY PIPE OR STRUCTURE WITHIN THE LIMITS OF THIS PROJECT THE OWNER APPLIES TO ALL PAGES.
 IF WORK IS TO BE DONE IN A STATE HIGHWAY, A PERMIT MUST BE OBTAINED FROM THE STATE OF CALIFORNIA, DIVISION OF HIGHWAYS, 120 SOUTH SPRING STREET.

COUNTY OF LOS ANGELES, CALIFORNIA
 APPROVED, JOHN A. LAMBE, COUNTY ENGINEER
 APPROVED, C.R. COMPTON, CHIEF ENGINEER
 BY *J. A. Lame* DISTRICT ENGINEER
 BY *C. R. Compton* CHIEF ENGINEER
 CHECKED BY *W. F. Worthington* 8-26-60
 OFFICE OF COUNTY ENGINEER, BLDG. C. & NO. 11636
 SUBMITTED *Jack C. Lansing*
 Palos Verdes - California Highway Regional Engineer 8/26/60

17. Standard Specifications dated Jan. 1, 1960, apply in the construction of this project.



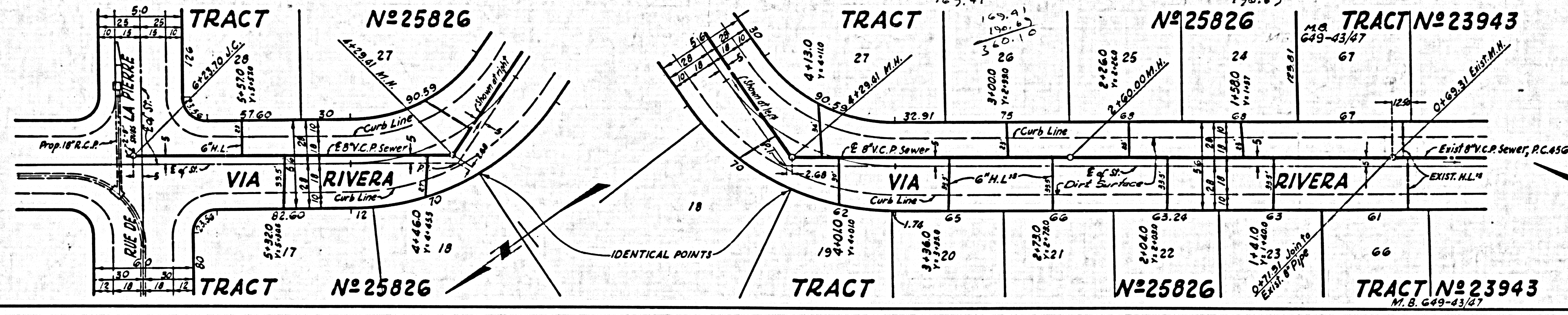
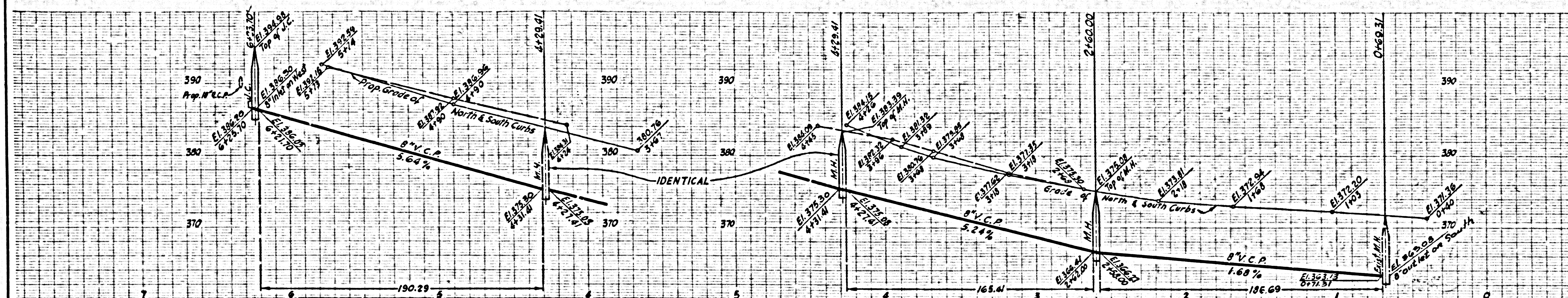
P.C. 5545 PAGE 2
 DOUBLE SCALE
 NO CHARGE FOR CONNECTIONS

29881

DOUBLE SCALE

NO CHARGE FOR CONNECTIONS

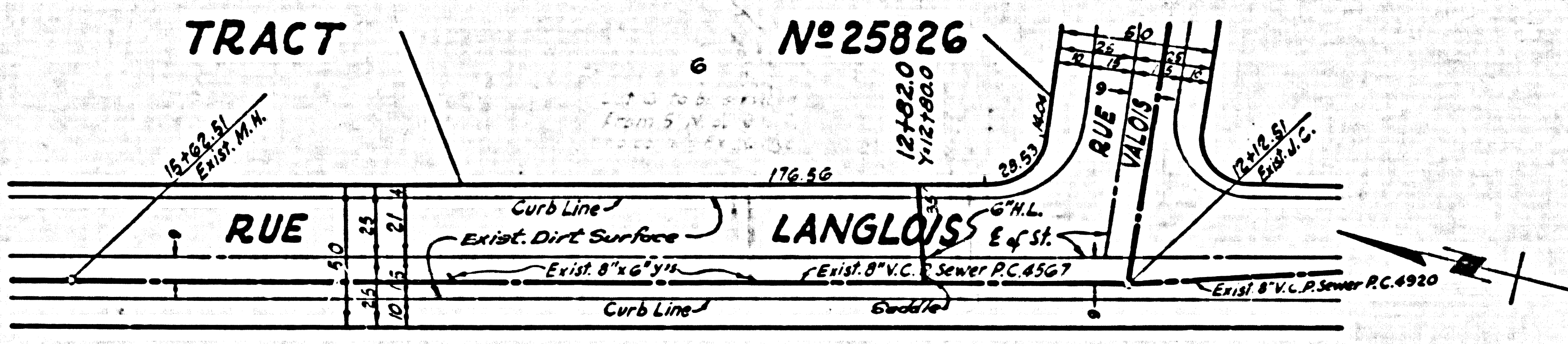
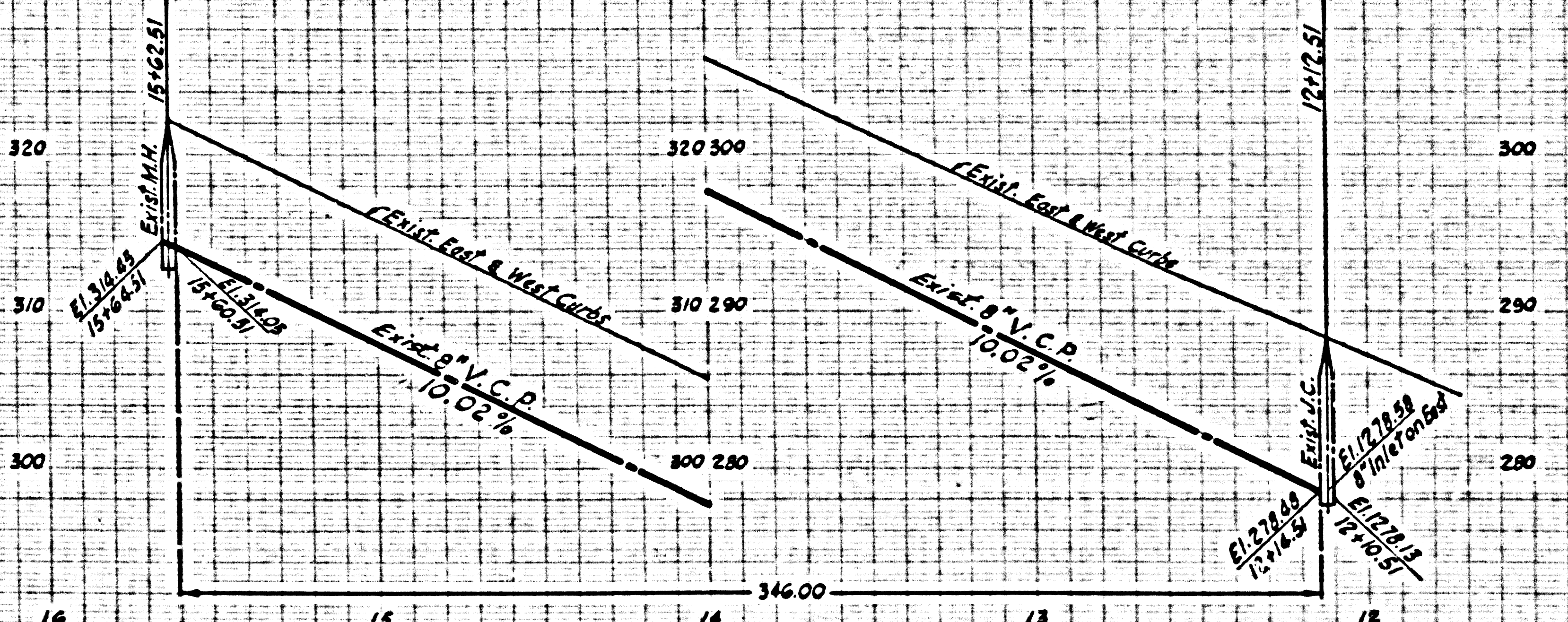
29,882



DOUBLE SCALE

NO CHARGE FOR CONNECTIONS

29,883



NO CHARGE FOR
CONNECTIONS

29884

