

B.M. 56 1207 EL. 298.653
Lead and B.M. in west curb Durfee Ave. opposite to
home N° 3434 Durfee Ave 1/2 N. of conc. apron
Covina Quad. 1933 adj.

TEMPLE CITY BLDG. DIST. NO. 5

PROFILE ALIGNMENT AND GRADE OF P.C. 5546
SANITARY SEWERS PAGE 1
TO BE CONSTRUCTED IN J.N. 0353.67
BELCROFT AVE. EXTENSION

PRIVATE CONTRACT NO. 5546

W.S. 46
2 SHEET : 2 PAGES
SCALE: HORIZ. 1" = 40' VERT. 1" = 4'
MAY 23 1960
PREPARED IN THE OFFICES OF

30,154

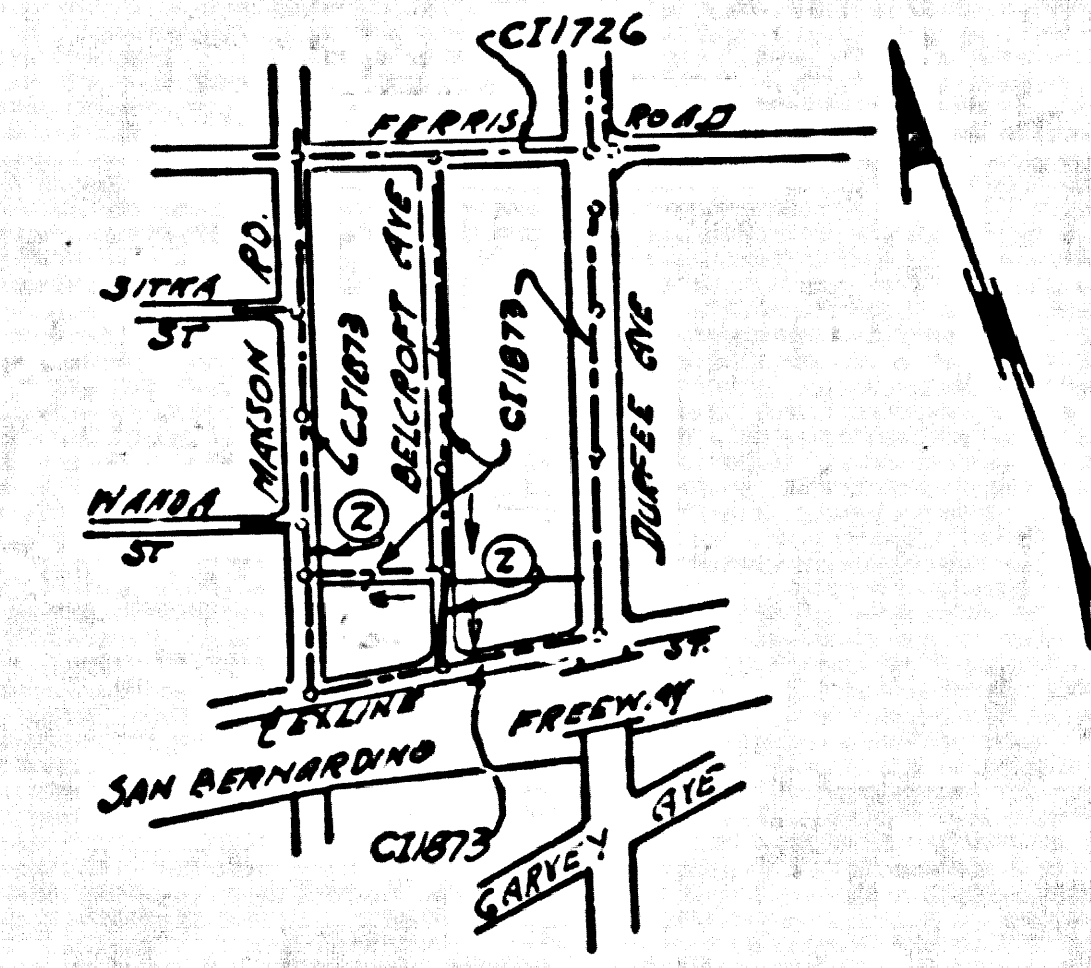
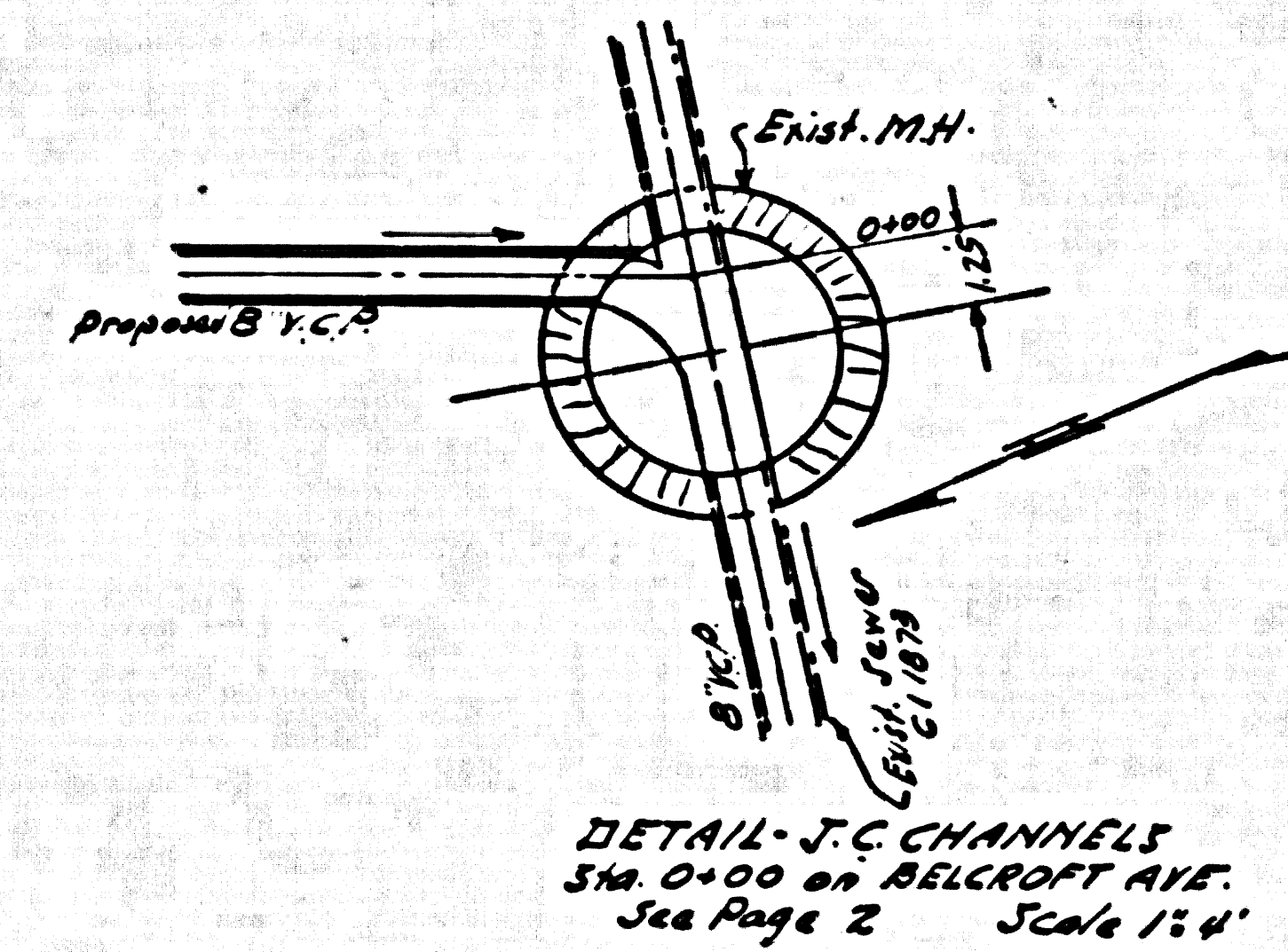
By: *Chas. J. Bell*
REG. C. E. NO. 2837

FOR LEGEND SEE PLAN NO. S-A-44

NOTE:
GRADES TO WHICH THIS IMPROVEMENT IS TO BE CONSTRUCTED ARE SHOWN ON PLANS AND PROFILES. GRADE POINTS FOR TOP OF CURBS, CENTER LINE OF STREETS, OR CENTER LINE OF ALLEYS ARE SHOWN BY CIRCLES ON PLANS. AT ALL POINTS BETWEEN DESIGNATED POINTS THE GRADE SHALL BE ESTABLISHED SO AS TO CONFORM TO A STRAIGHT LINE DRAWN BETWEEN SAID DESIGNATED POINTS.
ELEVATIONS ARE IN FEET ABOVE U.S.C. & G.S. SEA LEVEL DATUM OF 1929.
THIS DRAWING AND THE DATA HEREON ARE HEREBY MADE A PART OF THE SPECIFICATIONS.
WORK SHALL BE CONSTRUCTED ACCORDING TO SPECIFICATIONS ON FILE IN THE OFFICE OF THE COUNTY ENGINEER AND SHALL BE PROSECUTED ONLY IN THE PRESENCE OF THE COUNTY ENGINEER.
BEFORE WORK CAN BE STARTED, THE CONTRACTOR MUST OBTAIN A PERMIT TO EXCAVATE IN COUNTY STREETS FROM THE L.A. COUNTY ROAD DEPT., DISTRICT OFFICE NO. 1, AND CITY PERMIT NO. 729 FROM THE COUNTY ENGINEER, ROOM 324 SAN AMERICAN BUILDING, 251 30. BROADWAY SUFFICIENT TO COVER THE COST OF CONSTRUCTION INSPECTION AND RECORD PLANS.
APPROVAL OF THIS PLAN BY THE COUNTY OF LOS ANGELES DOES NOT CONSTITUTE A REPRESENTATION AS TO THE ACCURACY OF THE LOCATION OR OF THE EXISTENCE OR NON-EXISTENCE OF ANY UNDERGROUND UTILITY PIPE, OR STRUCTURE WITHIN THE LIMITS OF THIS PROJECT. THIS NOTE APPLIES TO ALL PAGES.
IF WORK IS TO BE DONE IN A STATE HIGHWAY, A PERMIT MUST BE OBTAINED FROM THE STATE OF CALIFORNIA, DIVISION OF HIGHWAYS, 128 SOUTH BRINLEY STREET.

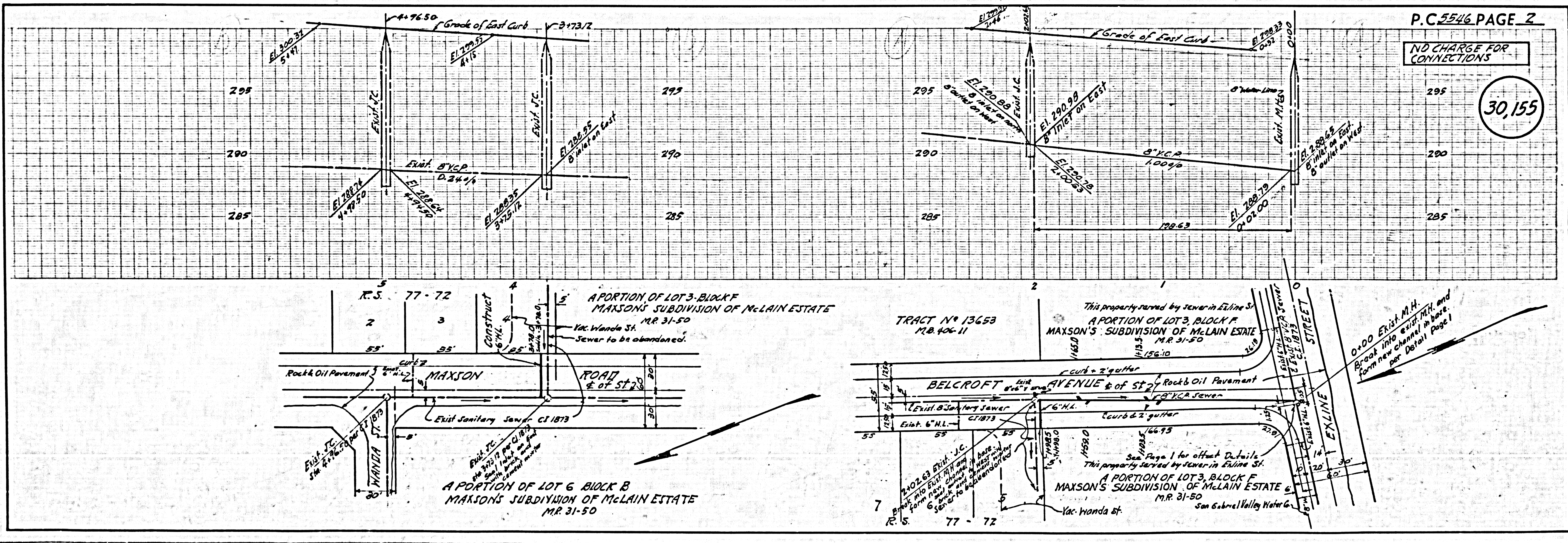
- NOTES:
1. THE CONTRACTOR SHALL NOTIFY THE CONSTRUCTION DIVISION BY TELEPHONE MADISON 5-4747, EST. 24 HOURS LEAST TWENTY-FOUR HOURS BEFORE STARTING ANY WORK UNDER THIS CONTRACT.
 2. STANDARD SPECIFICATIONS APPROVED JAN. 11, 1960 SHALL BE USED IN THE CONSTRUCTION OF THIS PROJECT.
 3. THE PRIVATE ENGINEER SHALL FURNISH THE HOUSE LATERAL DEPTH AT THE PROPERTY LINE BELOW THE TOP OF CURB ELEVATION FOR EACH HOUSE LATERAL ON THE GRADE SHEET.
 4. NO REVISIONS SHALL BE MADE IN THESE PLANS WITHOUT THE APPROVAL OF THE COUNTY ENGINEER.
 5. USE STANDARD STRENGTH PIPE.
 6. USE CEMENT MORTAR OR "WEDGE-LOCK" OR "SPEED-SEAL" FOR ALL V.C.P. JOINTS PER SPEC. SECS. 36 & 46.
 7. RESURFACE ALL TRENCH WITHIN PAVED AREA TO MEET L.A. COUNTY ROAD DEPT. OR CALIF. STATE HIGHWAY REQUIREMENTS IN ACCORDANCE WITH PERMITS.
 8. ENCASE FOUR FEET OF SEWER AT POINTS OF INTERFERENCE WITH POLES, CASE NO. S-1172.
 9. HOUSE LATERALS TO BE CONSTRUCTED WITH INVERTS AT PROPERTY LINE 6 FEET BELOW CURB GRADE EXCEPT AS NOTED.
 10. FOR ALLOWABLE LEAKAGE TEST USE FORMULA NO. 1, SPEC. SEC. 54.

NO CHARGE FOR CONNECTIONS
C. J. Bell



INDEX MAP
P.C. 5546
Scale 1/400'

COUNTY OF LOS ANGELES, CALIFORNIA
APPROVED, JOHN A. LAMBE, COUNTY ENGINEER
BY: *C. J. Bell* AS ST. SANITATION ENGINEER
CHECKED BY: *B. F. Worling* OFFICE ENGINEER
OFFICE OF COUNTY ENGINEER, REG. C. E. NO. 11636
SUBMITTED: *N. J. Brauer* San Gabriel Valley Regional Engineer.

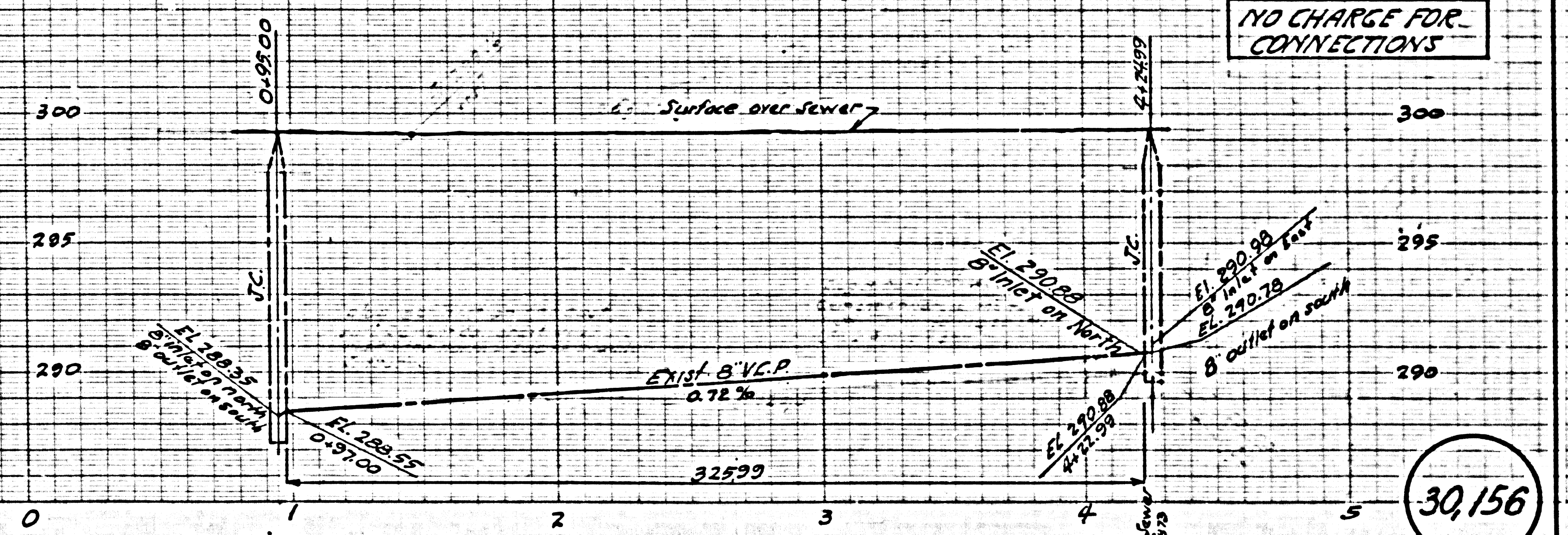


P.C. 5546 PAGE 2

NO CHARGE FOR CONNECTIONS

30,155

NO CHARGE FOR CONNECTIONS



30,156

Why do we need this sheet??

