

DUARTE BLDG. DIST. NO. 5.02

TRACT NO. 23705
PRIVATE CONTRACT NO. 5561

W.S. 47
 2 SHEETS; 3 PAGES

SCALE: VERT. 1"=4'
 HORIZ. 1"=40'

JUNE, 1960
 PREPARED IN THE OFFICES OF
KEMMERER ENGR. CO., INC.
 BY: Robert R. Flores
 REG. C. E. NO. 11349

FOR LEGEND SEE PLAN NO. S-A-64

30850

- NOTES:
- PROVIDE STAKES ON THE PROPERTY LINE OR PROPERTY LINES PRODUCED AT RIGHT ANGLES TO THE SEWER LINE AT THE CENTER LINE OF EACH MANHOLE.
 - NO REPRESENTATIVE OF THE CITY ENGINEER SHALL FURNISH OR LAYOUT ANY PORTION OF THE WORK.
 - THE OWNER OR HIS AUTHORIZED REPRESENTATIVE SHALL SURVEY THE CITY ENGINEER WITH GRADE SHEETS AND STATIONING FOR ALL HOUSE LATERALS AND Y BRANCHES AND SHALL PROVIDE STAKES FOR THEM AT THEIR PROPER LOCATIONS WITH STATIONING PLAINLY MARKED. ANY CHANGE IN LOCATION SHALL BE REQUESTED IN WRITING BY THE OWNER OR HIS REPRESENTATIVE.
 - NO REVISIONS SHALL BE MADE IN THESE PLANS WITHOUT THE APPROVAL OF THE CITY ENGINEER.
 - USE STANDARD MANHOLE FRAMES AND COVERS, S-A-117, EXCEPT AS NOTED. COVER TO READ "SEWER".
 - USE STANDARD STRENGTH PIPE EXCEPT AS NOTED.
 - USE CEMENT MORTAR "W-SERF-LOC" OR "SEWER-SEAL" FOR ALL VITRIFIED CLAY PIPE JOINTS PER SPECS. S-C-24 & S-C-61.
 - RESURFACE ALL TRENCH WITHIN PAVED AREA TO MEET L. A. COUNTY ROAD DEPT., OR CALIF. STATE HIGHWAY DEPT. REQUIREMENTS IN ACCORDANCE WITH PERMITS.
 - ENCASE FOUR FEET OF SEWER AT POINTS OF INTERFERENCE WITH POLES, S-A-172, CASE III.
 - HOUSE LATERALS TO BE CONSTRUCTED WITH INVERTS AT PROPERTY LINE 6 FEET BELOW CURB GRADE EXCEPT AS NOTED.
 - ALL STRUCTURES SHALL BE BRICK SEWER STRUCTURES, S-A-104, EXCEPT AS NOTED.
 - FOR ALLOWABLE LEAKAGE TEST USE FORMULA NO. 1 SPECS., SEC. 54.
 - MANHOLE TOPS IN UNIMPROVED RIGHTS-OF-WAY TO BE 6" ABOVE FINISHED GRADE.
 - THE PRIVATE ENGINEER IS TO FURNISH THE HOUSE LATERAL DEPTH AT THE PROPERTY LINE BELOW THE TOP OF CURB ELEVATION FOR EACH HOUSE LATERAL ON THE GRADE SHEET.
 - STANDARD SPECIFICATIONS DATED JAN. 1, 1960 APPLY IN THE CONSTRUCTION OF THIS PROJECT.
 - CONTRACTOR SHALL NOTIFY THE CONSTRUCTION DIVISION BY TELEPHONE (MADRIAN 7474) EXT. 61521 AT LEAST TWENTY FOUR HOURS BEFORE STARTING ANY WORK UNDER THIS PROJECT.

KEMMERER ENGINEERING CO. INC. assumes no responsibility for the location of existing utility lines. A thorough search has been made with utility companies known search for lines in this area and with the County of Los Angeles Underground Utility Survey for the location and elevations of all utility lines.

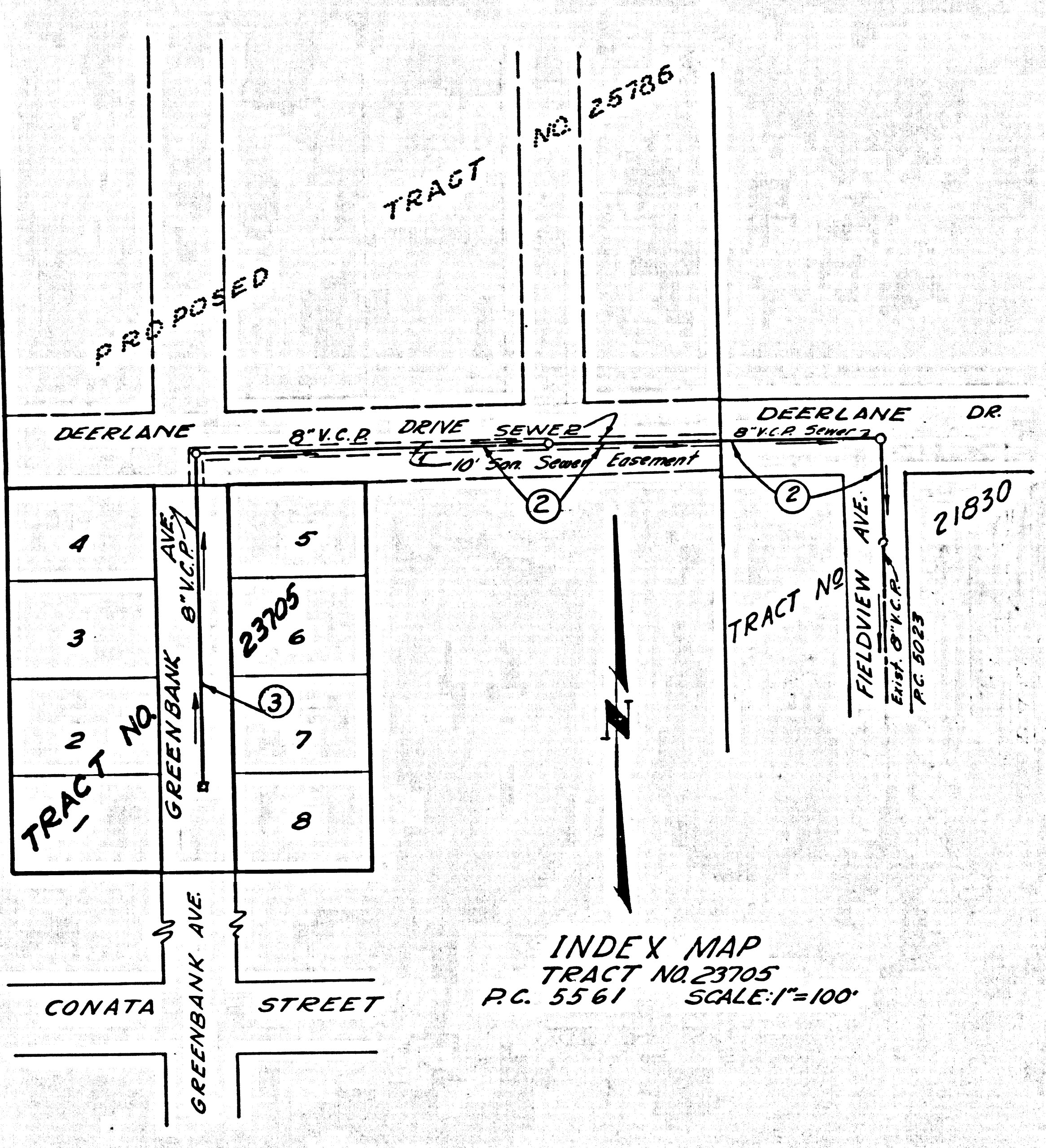
BENCH MARK: K-K-195
 ELEV. 610.867 PER F.B. 1982
 PAGE 69 FISH CANYON ROAD AND BETTYHILL AVE NE COR. LET. IN CURB AT EAST END OF CURB RETURN.

NO CHARGE FOR CONNECTIONS
W.G. Jones 7/13/60

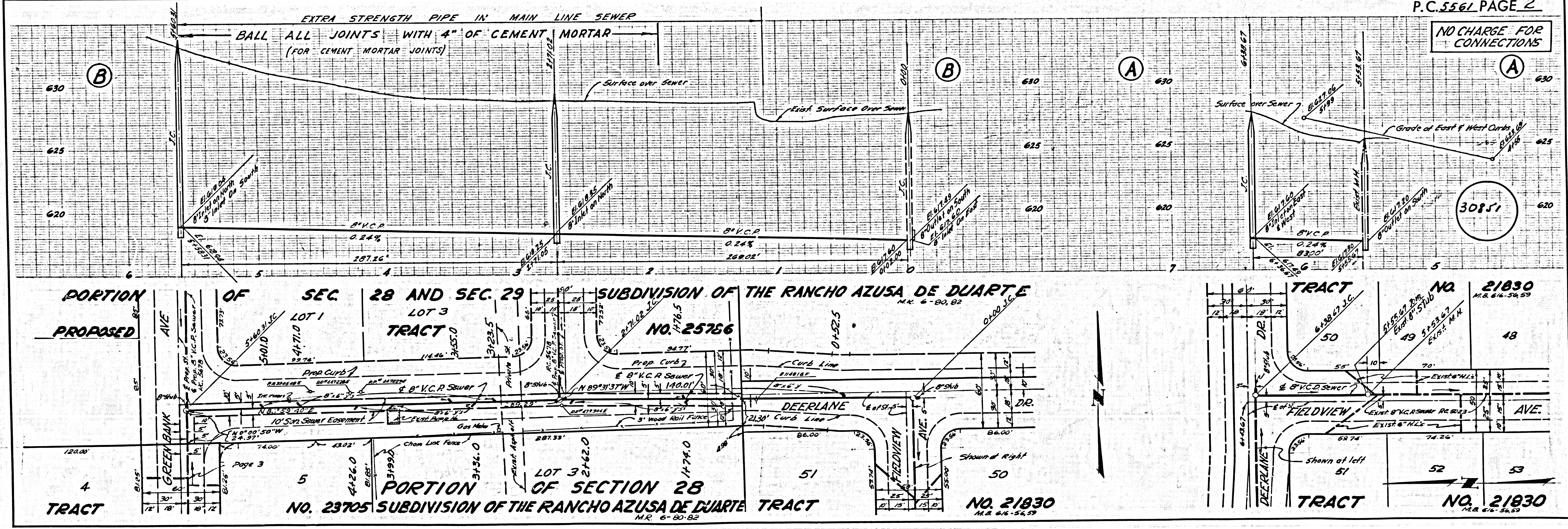
NOTE:
 GRADES TO WHICH THIS IMPROVEMENT IS TO BE CONSTRUCTED ARE SHOWN ON PLANS AND PROFILE. GRADE POINTS FOR TOP OF CURBS, CENTER LINE OF STREETS, OR CENTER LINE OF ALLEYS ARE SHOWN BY CIRCLES ON PROFILES. AT ALL POINTS BETWEEN DESIGNATED POINTS THE GRADE SHALL BE ESTABLISHED SO AS TO CONFORM TO A STRAIGHT LINE DRAWN BETWEEN SAID DESIGNATED POINTS.
 ELEVATIONS ARE IN FEET ABOVE U.S.C. & G.S. SEA LEVEL DATUM OF 1929.
 THIS DRAWING AND THE DATA HEREON ARE HEREBY MADE A PART OF THE SPECIFICATIONS.
 WORK SHALL BE CONSTRUCTED ACCORDING TO SPECIFICATIONS ON FILE IN THE OFFICE OF THE CITY ENGINEER AND SHALL BE PROSECUTED ONLY IN THE PRESENCE OF THE CITY ENGINEER.
 BEFORE WORK CAN BE STARTED, THE CONTRACTOR MUST OBTAIN A PERMIT TO EXCAVATE IN CITY STREETS FROM THE PUBLIC WORKS DEPARTMENT AND MAKE A DEPOSIT WITH THE CITY OF DUARTE, 1600 N. S. ST. ST. DUARTE, CALIF. SUFFICIENT TO COVER THE COST OF CONSTRUCTION, INSPECTION AND RECORD PLANS.
 APPROVAL OF THIS PLAN BY THE CITY ENGINEER DOES NOT CONSTITUTE A REPRESENTATION AS TO THE ACCURACY OF THE LOCATION OF OR THE EXISTENCE OR NON-EXISTENCE OF ANY UNDERGROUND UTILITY PIPE, OR STRUCTURE WITHIN THE LIMITS OF THIS PROJECT. THIS NOTE APPLIES TO ALL PAGES.
 IF WORK IS TO BE DONE IN A STATE HIGHWAY, A PERMIT MUST BE OBTAINED FROM THE STATE OF CALIFORNIA, DIVISION OF HIGHWAYS, 130 SOUTH SPRING STREET.

CITY OF DUARTE, CALIFORNIA
 APPROVED, JOHN A. LAMBIE, CITY ENGINEER
 APPROVED, C.R. CAMPION CHIEF ENGINEER
 DO. SAN. DIST. NO. 22
 BY: [Signature] BY: [Signature]
 SANITATION ENGINEER OFFICE ENGINEER
 CHECKED BY: [Signature]
 OFFICE OF CITY ENGINEER, REG. C. E. NO. 2406

SUBMITTED BY: N.F. Bravender
 SAN GABRIEL VALLEY REGIONAL ENGINEER



INDEX MAP
 TRACT NO. 23705
 P.C. 5561 SCALE: 1"=100'



NO CHARGE FOR CONNECTIONS

30852

