

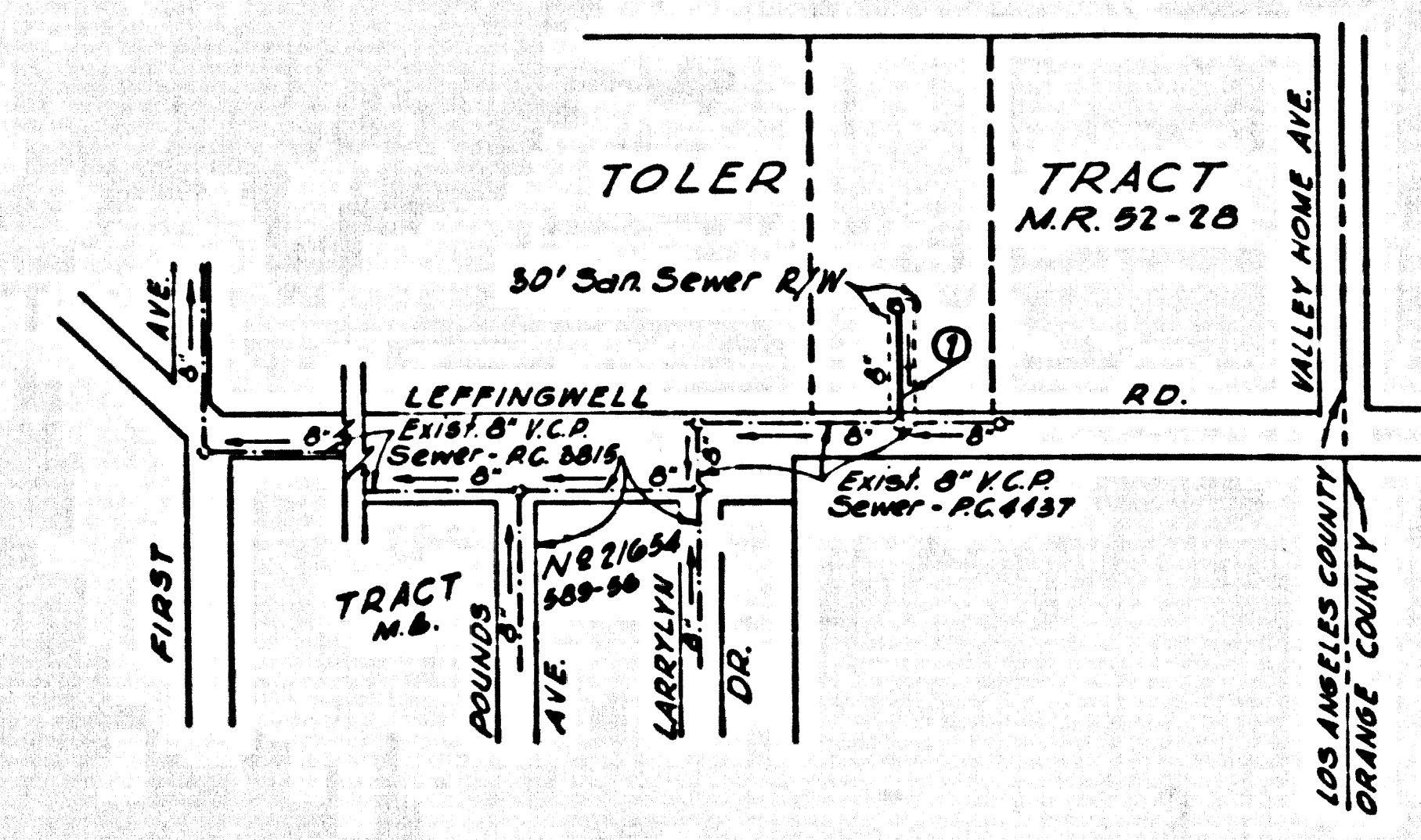
WHITTIER BLDG. DIST. NO.11

PROFILE ALIGNMENT AND GRADE OF **P.C. 5567**
SANITARY SEWERS PAGE **1**
 TO BE CONSTRUCTED IN
SANITARY SEWER R/W
NORTH OF LEFFINGWELL ROAD
PRIVATE CONTRACT NO. 5567
 W.S. 34
 1 SHEETS: 2 PAGES
 SCALE: VERT. 1"=4' HORIZ. 1"=40' **APRIL, 1960**
 PREPARED IN THE OFFICES OF
DANIEL, MANN, JOHNSON & MENDENHALL
 BY: *[Signature]* REG. C. E. NO. 2127
 FOR LEGEND SEE PLAN NO. S-A-64

- NOTES:
1. PROVIDE STAKES ON THE PROPERTY LINE OR PROPERTY LINES PRODUCED AT RIGHT ANGLES TO THE SEWER LINE AT THE CENTER LINE OF EACH MANHOLE.
 2. NO REPRESENTATIVE OF THE COUNTY ENGINEER WILL SURVEY OR LAY OUT ANY PORTION OF THE WORK.
 3. THE OWNER OR HIS AUTHORIZED REPRESENTATIVE SHALL FURNISH THE COUNTY ENGINEER WITH GRADE SHEETS AND STATIONING FOR ALL HOUSE LATERALS AND Y BRANCHES AND SHALL PROVIDE STAKES FOR THEM AT THEIR PROPER LOCATIONS WITH STATIONING PLAINLY MARKED. ANY CHANGE IN LOCATION SHALL BE REQUESTED IN WRITING BY THE OWNER OR HIS REPRESENTATIVE.
 4. THE PRIVATE ENGINEER SHALL FURNISH THE HOUSE LATERAL DEPTH AT THE PROPERTY LINE BELOW THE TOP OF CURB ELEVATION FOR EACH HOUSE LATERAL ON THE GRADE SHEET.
 5. NO REVISIONS SHALL BE MADE IN THESE PLANS WITHOUT THE APPROVAL OF THE COUNTY ENGINEER.
 6. USE STANDARD MANHOLE FRAMES AND COVERS, S-117-8068P-AS-N0868.
 7. USE STANDARD STRENGTH PIPE, S-117-8068P-AS-N0868.
 8. USE CEMENT MORTAR ON "WEDGE-LOC" OR "SPEED-SEAL" FOR ALL V.C.P. JOINTS PER SPEC'S, SECS. 36 & 40.
 9. REINFORCE ALL TRENCH WITHIN RATED AREA TO MEET L.A. COUNTY ROAD DEPT. C. CALIF. STATE HIGHWAY REQUIREMENTS IN ACCORDANCE WITH PERMITS.
 10. ENCASE FOUR FEET OF SEWER AT POINTS OF INTERFERENCE WITH POLES, CASE III, S-172.
 11. HOUSE LATERALS TO BE CONSTRUCTED WITH INVERTS AT PROPERTY LINE FEET BELOW CURB GRADE SHEET AS NOTED.
 12. ALL STRUCTURES SHALL BE BRICK SEWER STRUCTURES, S-104-8068P-AS-N0868.
 13. FOR ALLOWABLE LEAKAGE TEST USE FORMULA NO. 1, SPEC'S, SEC. 54.
 14. MANHOLE TOPS IN UNIMPROVED RIGHTS-OF-WAY TO BE LEVEL WITH FINISHED GRADE.
 15. THE CONTRACTOR SHALL NOTIFY THE COMMISSION DIVISION BY TELEPHONE, MADISON 5-4747, EXT. 8-801 AT LEAST TWENTY-FOUR HOURS BEFORE STARTING ANY WORK UNDER THIS CONTRACT.
 16. STANDARD SPECIFICATIONS DATED OCTOBER 10, 1960 APPLY IN THE CONSTRUCTION OF THIS PROJECT.

NOTE:
 The Contractor shall notify Utility Companies before starting construction.

B.M.S.Y. 1147 ELEV. 269.517
 Lead of nail in top of 42" Standpipe
 on East edge @ S.W. cor. of Leffingwell
 Rd. & First Ave. 4.5' above ground.
 L.A. MAPADA 1955

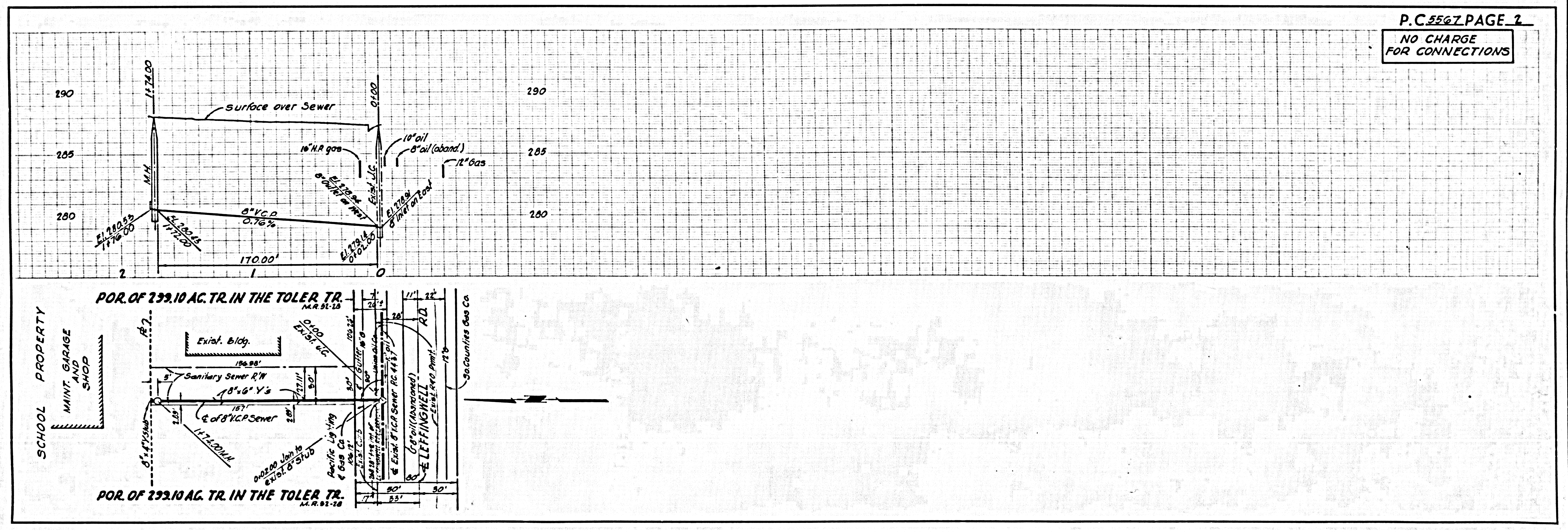


INDEX MAP
 Scale: 1"=500' P.C. 5567
 J.N. 0353.75

NO CHARGE FOR CONNECTIONS
[Signature] 10-7-60

NOTE:
 GRADES TO WHICH THIS IMPROVEMENT IS TO BE CONSTRUCTED ARE SHOWN ON P.LANS AND PROFILE GRADE POINTS FOR TOP OF CURB CENTER LINE OF STREETS, OR CENTER LINE OF ALLEYS ARE SHOWN BY CIRCLES ON PROFILE AT ALL POINTS BETWEEN DESIGNATED POINTS THE GRADE SHALL BE ESTABLISHED SO AS TO CONFORM TO A STRAIGHT LINE DRAWN BETWEEN SAID DESIGNATED POINTS.
 THIS DRAWING AND THE DATA HEREON ARE HEREBY MADE A PART OF THE SPECIFICATIONS.
 WORK SHALL BE CONSTRUCTED ACCORDING TO SPECIFICATIONS ON FILE IN THE OFFICE OF THE COUNTY ENGINEER AND SHALL BE PROSECUTED ONLY IN THE PRESENCE OF THE COUNTY ENGINEER.
 BEFORE WORK CAN BE STARTED THE CONTRACTOR MUST OBTAIN A PERMIT TO EXCAVATE IN COUNTY STREETS FROM THE L. A. COUNTY ROAD DEPT., DISTRICT OFFICE NO. 42, AND PAY A FEE WITH THE COUNTY ENGINEER ROOM 324 SAN AMERICAN BUILDING, 251 SO. BROADWAY SUFFICIENT TO COVER THE COST OF CONSTRUCTION INSPECTION AND RECORD PLANS.
 APPROVAL OF THIS PLAN BY THE COUNTY OF LOS ANGELES DOES NOT CONSTITUTE A REPRESENTATION AS TO THE ACCURACY OF THE LOCATION OR THE EXISTENCE OR NON-EXISTENCE OF ANY UNDERGROUND UTILITY PIPE, OR STRUCTURE WITHIN THE LIMITS OF THIS PROJECT. THIS NOTE APPLIES TO ALL PAGES.
 IF WORK IS TO BE DONE IN A STATE HIGHWAY, A PERMIT MUST BE OBTAINED FROM THE STATE OF CALIFORNIA, DIVISION OF HIGHWAYS, 120 SOUTH SPRING STREET.

COUNTY OF LOS ANGELES, CALIFORNIA
 APPROVED, JOHN A. LAMBIE, COUNTY ENGINEER APPROVED, C.R. COMPTON, CHIEF ENGINEER
 CO. SAN. DIST. NO. 18
 BY: *[Signature]* ASST. SANITATION ENGINEER BY: *[Signature]* OFFICE ENGINEER
 CHECKED BY: *[Signature]* 10-14-60
 OFFICE OF COUNTY ENGINEER, REG. C. E. NO. 2406



P.C. 5567 PAGE 2
 NO CHARGE FOR CONNECTIONS

