

LOMITA BLDG. DIST. NO. 71

PROFILE ALIGNMENT AND GRADE OF **P.C. 5574**
SANITARY SEWERS PAGE 1
 TO BE CONSTRUCTED IN J.N. 0353.84

WESTERN AVENUE
PRIVATE CONTRACT NO. 5574

W.S. 28
 1 SHEET 2 PAGES
 SCALE: VERT. 1"=4' HORIZ. 1"=40'
 JUNE, 1960
 PREPARED IN THE OFFICES OF

BARCLAY-BEARSON CO. INC.
 BY: *Thomas C. Clark*
 REG. C. E. NO. 8757

30169

FOR LEGEND SEE PLAN NO. S-A-44

NOTE:
 GRADES TO WHICH THIS PROJECT IS TO BE CONSTRUCTED ARE SHOWN ON PLANS AND PROFILE BEARS POINTS FOR TOP OF CURBS, CENTER LINE OF STREETS OR CENTER LINE OF ALLEYS ARE SHOWN BY CIRCLES ON PROFILES. AT ALL POINTS BETWEEN DESIGNATED POINTS THE GRADE SHALL BE ESTABLISHED SO AS TO CONFORM TO A STRAIGHT LINE DRAWN BETWEEN SAID DESIGNATED POINTS.
 ELEVATIONS ARE IN FEET ABOVE U.S.C. & G.S. SEA LEVEL DATUM OF 1929.
 THIS DRAWING AND THE DATA HEREON ARE HEREBY MADE A PART OF THE SPECIFICATIONS.
 WORK SHALL BE CONSTRUCTED ACCORDING TO SPECIFICATIONS ON FILE IN THE OFFICE OF THE COUNTY ENGINEER AND SHALL BE PROSECUTED ONLY IN THE PRESENCE OF THE COUNTY ENGINEER.
 BEFORE WORK CAN BE STARTED THE CONTRACTOR MUST OBTAIN A PERMIT TO EXCAVATE IN COUNTY STREETS FROM THE L.A. COUNTY ROAD DEPT. DISTRICT OFFICE NO. 3 1100 MAIN STREET, LOS ANGELES, CALIF. THE COUNTY ENGINEER'S ROOM IS IN THE AMERICAN BUILDING, 231 SO. BROADWAY SUFFICIENT TO COVER THE COST OF CONSTRUCTION INSPECTION AND RECORD PLANS.
 APPROVAL OF THIS PLAN BY THE COUNTY OF LOS ANGELES DOES NOT CONSTITUTE A REPRESENTATION AS TO THE ACCURACY OF THE LOCATION OF OR THE EXISTENCE OR NON-EXISTENCE OF ANY UNDERGROUND UTILITY PIPE, OR STRUCTURE WITHIN THE LIMITS OF THIS PROJECT. THIS NOTE APPLIES TO ALL PAGES.
 IF WORK IS TO BE DONE IN A STATE HIGHWAY, A PERMIT MUST BE OBTAINED FROM THE STATE OF CALIFORNIA, DIVISION OF HIGHWAYS, 120 SOUTH SPRING STREET.

COUNTY OF LOS ANGELES, CALIFORNIA

APPROVED, JOHN A. LAMBIE, COUNTY ENGINEER APPROVED, C.P. COMPTON, CHIEF ENGINEER
 BY: *E. J. ...* 455F SANITATION ENGINEER BY: *...* OFFICE ENGINEER
 CHECKED BY: *...* 9-21-60
 OFFICE OF COUNTY ENGINEER, REG. C. E. NO. 3436

SUBMITTED BY: *Jack C. ...*
 PALOS VERDES-CENTINELA VALLEY REGIONAL ENGINEER

- NOTES:
1. PROVIDE STAKES ON THE PROPERTY LINE OR PROPERTY LINES PRODUCED AT RIGHT ANGLES TO THE SEWER LINE AT THE CENTER LINE OF EACH MANHOLE.
 2. NO REPRESENTATIVE OF THE COUNTY ENGINEER WILL SURVEY OR LAY OUT ANY PORTION OF THE WORK.
 3. THE OWNER OR HIS AUTHORIZED REPRESENTATIVE SHALL FURNISH THE COUNTY ENGINEER WITH GRADE SHEETS AND STATIONING FOR ALL HOUSE LATERALS AND Y BRANCHES AND SHALL PROVIDE STAKES FOR THEM AT THEIR PROPER LOCATIONS WITH STATIONING PLAINLY MARKED. ANY CHANGE IN LOCATION SHALL BE REQUESTED IN WRITING BY THE OWNER OR HIS REPRESENTATIVE.
 4. THE PRIVATE ENGINEER SHALL FURNISH THE HOUSE LATERAL DEPTH AT THE PROPERTY LINE BELOW THE TOP OF CURB ELEVATION FOR EACH HOUSE LATERAL ON THE GRADE SHEET.
 5. NO REVISIONS SHALL BE MADE IN THESE PLANS WITHOUT THE APPROVAL OF THE COUNTY ENGINEER.
 6. USE STANDARD MANHOLE FRAMES AND COVERS, S-117.
 7. USE STANDARD STRENGTH PIPE.
 8. USE "EMERT MORTAR OR "WEDGE-LOCK" OR "SPEED-SEAL" FOR ALL V.C.P. JOINTS PER SPECS. SECS. M & M.
 9. RESURFACE ALL TRENCH WITHIN PAVED AREA TO MEET L.A. COUNTY ROAD DEPT. OR CALIF. STATE HIGHWAY REQUIREMENTS IN ACCORDANCE WITH PERMITS.
 10. ENCASE FOUR FEET OF SEWER AT POINTS OF INTERFERENCE WITH POLES, CASE III, S-172.
11. ALL STRUCTURES SHALL BE BRICK SEWER STRUCTURES, S-104.
 12. FOR ALLOWABLE LEAKAGE TEST USE FORMULA NO. 1, SPECS. SEC. 64.
 13. THE CONTRACTOR SHALL NOTIFY THE CONSTRUCTION & STORM DRAIN DIVISION BY TELEPHONE MADISON 9-4749, EXT. 2241 AT LEAST TWENTY-FOUR HOURS BEFORE STARTING ANY WORK UNDER THIS CONTRACT.
 14. ALL THE LOCATIONS SHOWN FOR EXISTING SUBSTRUCTURES HAVE BEEN TAKEN FROM RECORDS AND THEIR CORRECTNESS AND COMPLETENESS IS IN NO WAY GUARANTEED. IT SHALL BE THE CONTRACTOR'S RESPONSIBILITY ALONE TO DEFINITELY LOCATE ALL UNDERGROUND LINES OF EVERY NATURE WHETHER SHOWN HEREON OR NOT AND PROTECT THEM FROM DAMAGE. THE CONTRACTOR SHALL BEAR THE TOTAL EXPENSE OF REPAIR TO ANY LINE DAMAGED BY ANY OPERATION IN CONNECTION WITH THE PROSECUTION OF THIS WORK.
 15. THE PRIVATE ENGINEER IS TO FURNISH THE HOUSE LATERAL DEPTH AT THE PROPERTY LINE BELOW THE TOP OF CURB ELEVATION FOR EACH HOUSE LATERAL ON THE GRADE SHEET.
 16. STANDARD SPECIFICATIONS DATED JANUARY 1, 1960 APPLY IN THE CONSTRUCTION OF THIS PROJECT.

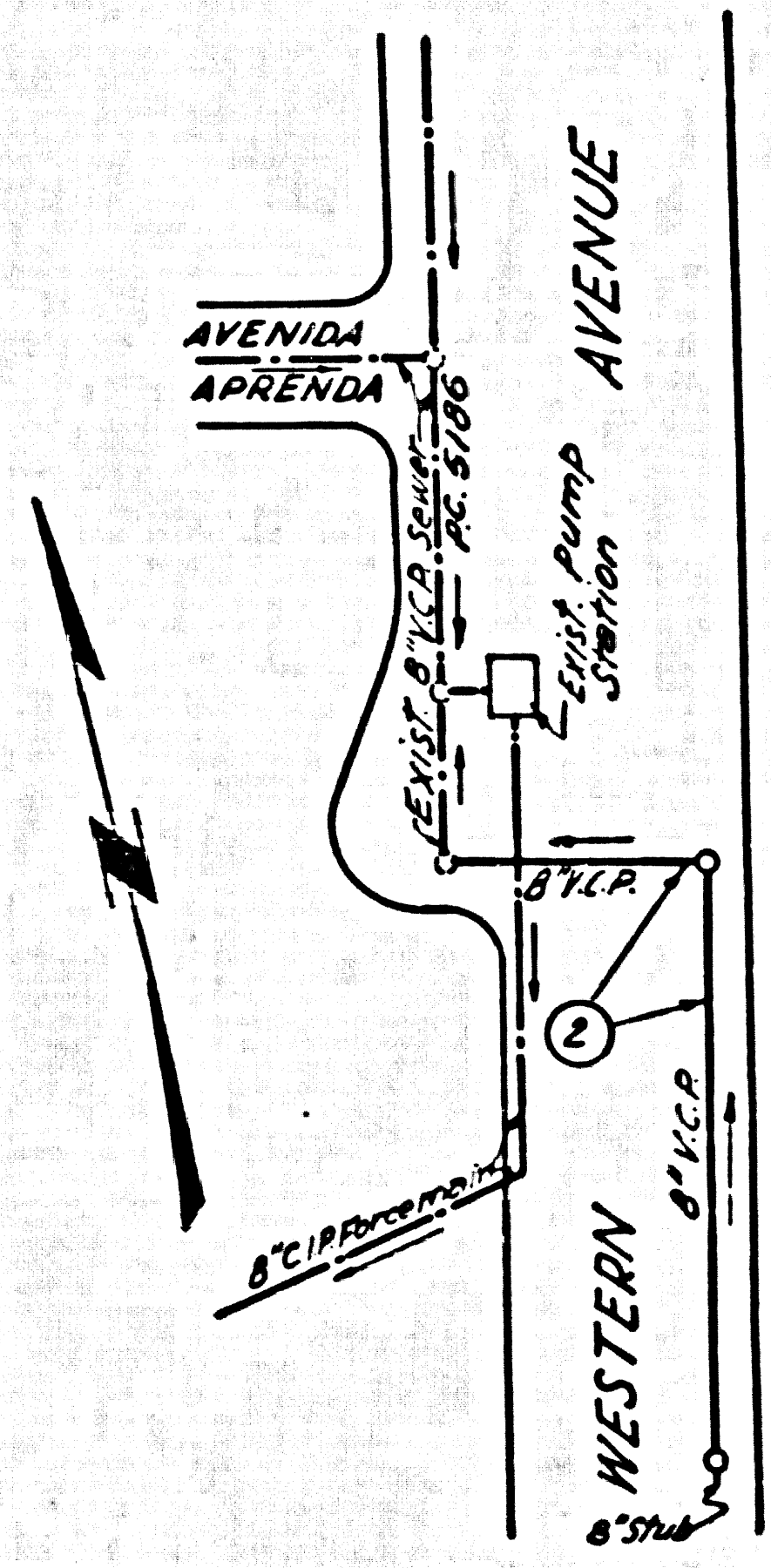
NO CHARGE FOR CONNECTIONS

Revision -
 Change grade of sewer between Sta. 0+00 to 1+09.05 and from Sta. 0+00 to 2+59.00.
 Moved M.H. from Sta. 2+64.85 to Sta. 2+59.00 due to utility interference.
 Approved: *Edward J. Smith*
 R.C.E. NO. 7267

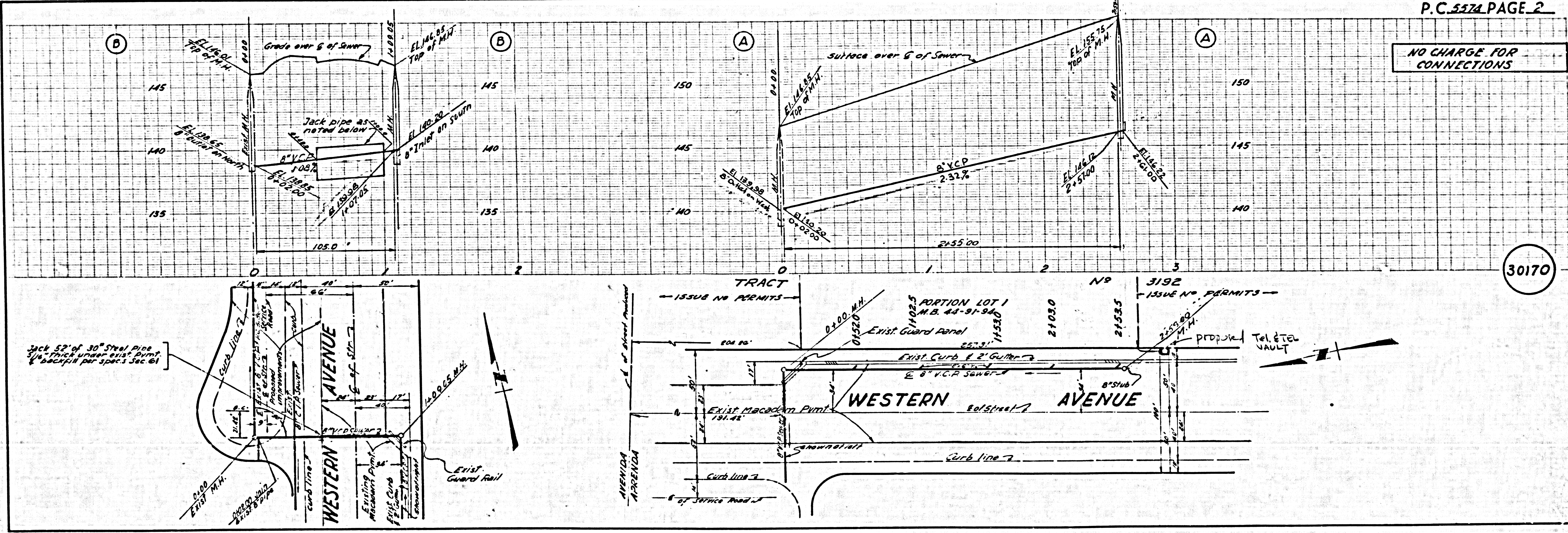
BENCH MARK

CSBM 35-4 EL. 139.10
 TBM 139.10 IN R.R. 4926408
 EAST SIDE OF WESTERN 45' N. E.
 AVENIDA APENDIA 1/4" STEEL SHANK
 RECOVERED IN THE BOOK 24438-11

APPROVED *J. R. ...*
 Industrial Waste Division



INDEX MAP
 P.C. 5574
 SCALE: 1"=100'



NO CHARGE FOR CONNECTIONS

30170

P.C. 5574 PAGE 2