

LOMITA BLDG. DIST. NO. 7.1

PROFILE ALIGNMENT AND GRADE OF **P.C. 5578**
SANITARY SEWERS PAGE 1
 TO BE CONSTRUCTED IN **J.M. 0353.87**

215TH STREET EAST OF FIGUEROA ST. 29,945

PRIVATE CONTRACT NO. 5578

W.S. 28
 1 SHEET ; 2 PAGES
 SCALE: FEET 1"=4'
 HORIZ. FEET 1"=40'
 7/18, 1960
 PREPARED IN THE OFFICES OF

29,445

R.V. PEARSON
 By: *R.V. Pearson*
 REG. C. E. NO. 3209
 FOR LEGEND SEE PLAN NO. S-A-64

NOTE:
 GRADES TO WHICH THIS IMPROVEMENT IS TO BE CONSTRUCTED ARE SHOWN ON PLANS AND PROFILES. GRADE POINTS FOR TOP OF CURBS, CENTER LINE OF STREETS, OR CENTER LINE OF ALLEYS ARE SHOWN BY CIRCLES OR TRIANGLES. AT ALL POINTS BETWEEN DESIGNATED POINTS THE GRADE SHALL BE ESTABLISHED SO AS TO CONFORM TO A STRAIGHT LINE DRAWN BETWEEN SAID DESIGNATED POINTS.
 ELEVATIONS ARE IN FEET ABOVE U.S.C. & G.S. SEA LEVEL DATUM OF 1929.
 THIS DRAWING AND THE DATA HEREON ARE HEREBY MADE A PART OF THE SPECIFICATIONS.
 BEFORE WORK CAN BE STARTED, THE CONTRACTOR MUST OBTAIN A PERMIT TO EXCAVATE IN COUNTY STREETS FROM THE L. A. COUNTY ROAD DEPT., DISTRICT OFFICE NO. 3 AND PAY A FEE TO THE COUNTY ENGINEER ROOM 2307 AMERICAN BUILDING, 343 SO. BROADWAY SUFFICIENT TO COVER THE COST OF CONSTRUCTION INSPECTION AND RECORD PLANS.
 APPROVAL OF THIS PLAN BY THE COUNTY OF LOS ANGELES DOES NOT CONSTITUTE A REPRESENTATION AS TO THE ACCURACY OF THE LOCATION OF OR THE EXISTENCE OR NON-EXISTENCE OF ANY UNDERGROUND UTILITY PIPE, OR STRUCTURE WITHIN THE LIMITS OF THIS PROJECT. THIS NOTE APPLIES TO ALL PAGES.
 IF WORK IS TO BE DONE IN A STATE HIGHWAY, A PERMIT MUST BE OBTAINED FROM THE STATE OF CALIFORNIA, DIVISION OF HIGHWAYS, 126 SOUTH SPRING STREET.

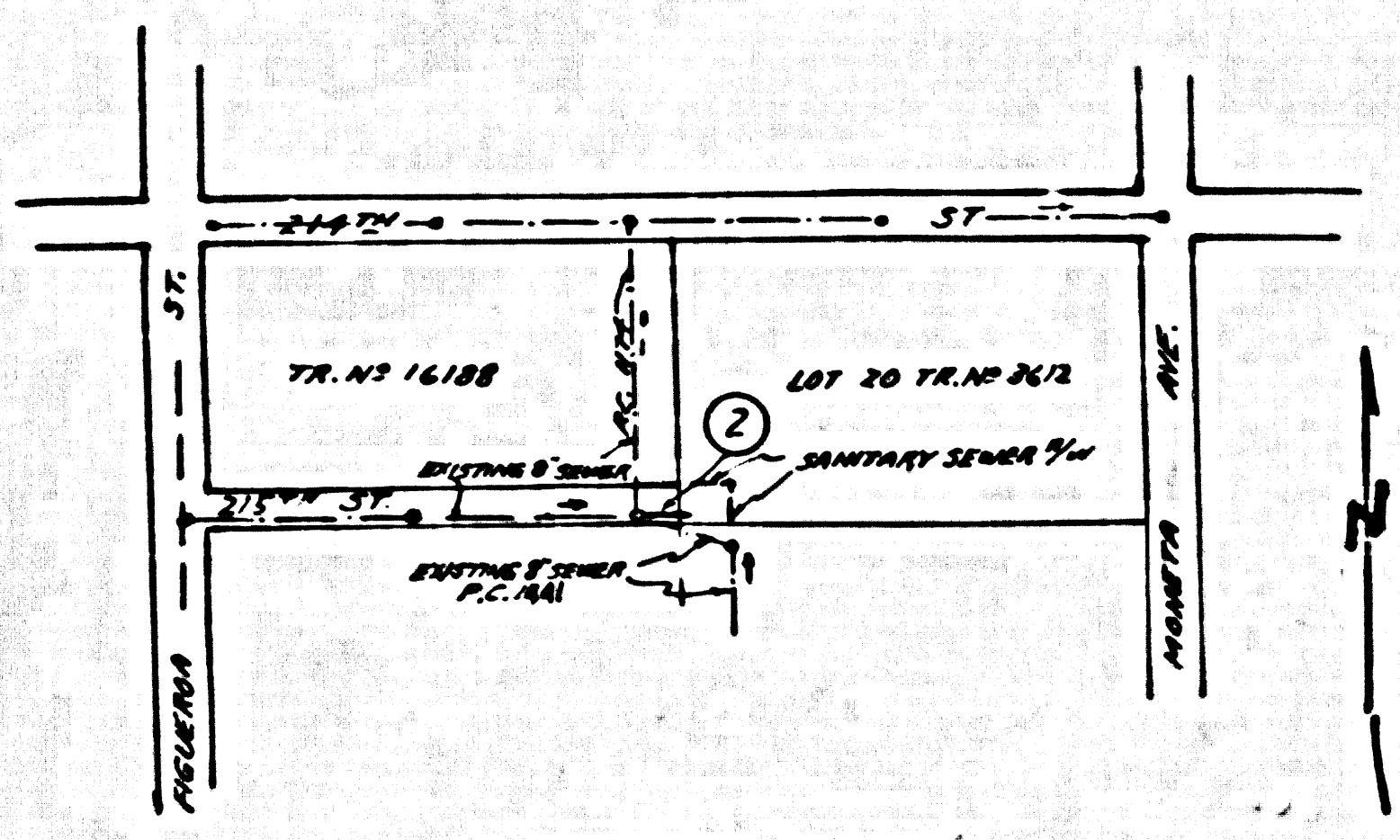
COUNTY OF LOS ANGELES, CALIFORNIA

APPROVED, JOHN A. LAMBIE, COUNTY ENGINEER APPROVED, C.R. COPPSON CHIEF ENGINEER
 REG. SAN. DIST. NO. 2

BY: *[Signature]* BY: *[Signature]*
 SANITATION ENGINEER OFFICE ENGINEER

CHECKED BY: *[Signature]* 7-26-60
 OFFICE OF COUNTY ENGINEER, REG. C. E. NO. 3456

SUBMITTED BY: *[Signature]*
 CHIEF OF ROADS - CENTINELA VALLEY REGIONAL ENGINEER



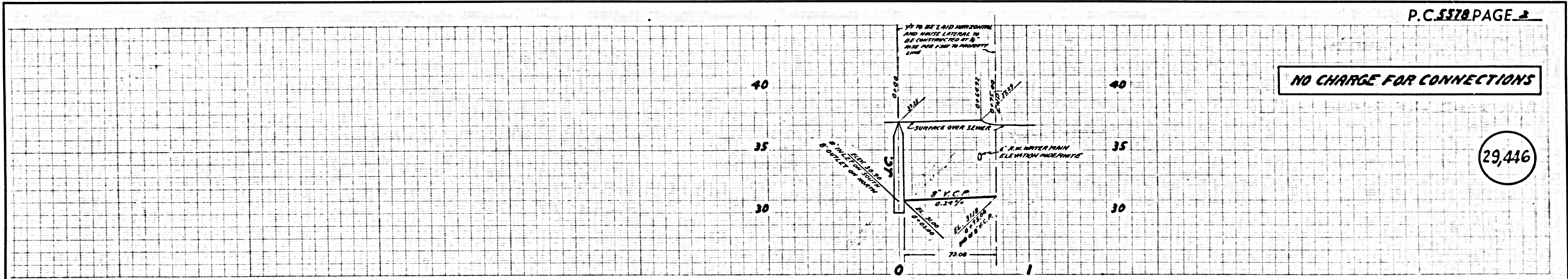
INDEX MAP
 P.C. 5578
 IN 215TH ST.
 SCALE: 1"=400'

- NOTES:
1. PROVIDE STAKES ON THE PROPERTY LINE OR PROPERTY LINES PRODUCED AT RIGHT ANGLES TO THE SEWER LINE AT THE CENTER LINE OF EACH MANHOLE.
 2. NO REPRESENTATIVE OF THE COUNTY ENGINEER WILL SURVEY OR LAY OUT ANY PORTION OF THE WORK.
 3. THE OWNER OR HIS AUTHORIZED REPRESENTATIVE SHALL FURNISH THE COUNTY ENGINEER WITH GRADE SHEETS AND STATIONINGS FOR ALL HOUSE LATERALS AND Y BRANCHES AND SHALL PROVIDE STAKES FOR THEM AT THEIR PROPER LOCATIONS WITH STATIONING PLAINLY MARKED. ANY CHANGE IN LOCATION SHALL BE REQUESTED IN WRITING BY THE OWNER OR HIS REPRESENTATIVE.
 4. THE PRIVATE ENGINEER SHALL FURNISH THE HOUSE LATERAL DEPTH AT THE PROPERTY LINE BELOW THE TOP OF CURB ELEVATION FOR EACH HOUSE LATERAL ON THE GRADE SHEET.
 5. NO REVISIONS SHALL BE MADE IN THESE PLANS WITHOUT THE APPROVAL OF THE COUNTY ENGINEER.
 6. USE STANDARD MANHOLE FRAMES AND COVERS, S-117.
 7. USE STANDARD STRENGTH PIPE.
 8. USE CEMENT MORTAR OR "WEDGELOCK" OR "SPED-SEAL" FOR ALL V.C.P. JOINTS PER SPC'S, SECS. 26 & 41.
 9. RESURFACE ALL TRENCH WITHIN PAVED AREA TO MEET L.A. COUNTY ROAD DEPT. OR CALIF. STATE HIGHWAY REQUIREMENTS IN ACCORDANCE WITH PERMITS.
 10. ENCASE FOUR FEET OF SEWER AT POINTS OF INTERFERENCE WITH POLES, CASE III, S-117.
 11. HOUSE LATERALS TO BE CONSTRUCTED AT A 1/8" RISE PER FOOT TO PROPERTY LINE.
 12. ALL STRUCTURES SHALL BE BRICK SEWER STRUCTURES, S-114, EXCEPT AS NOTED.
 13. FOR ALLOWABLE LEAKAGE TEST USE FORMULA NO. 1 SPC'S, SEC. 54.
 14. MANHOLE TOPS IN UNIMPROVED RIGHTS-OF-WAY TO BE SIX INCHES ABOVE FINISHED GRADE.
 15. THE CONTRACTOR SHALL NOTIFY THE CONSTRUCTION DIVISION BY TELEPHONE, MADISON 9-4743, EXT. 831 AT LEAST TWENTY-FOUR HOURS BEFORE STARTING ANY WORK UNDER THIS CONTRACT.
 16. STANDARD SPECIFICATIONS DATED JAN. 1, 1958 APPLY IN THE CONSTRUCTION OF THIS PROJECT.

BM Y.F. 33 PER F.B. 1741 P. 87 EL. 37.92
 214TH ST. AND FIGUEROA ST. N.E. COR. LEAD 4" JACKMAN
 IN CURB 15' EAST OF EAST END OF CURB RETURN

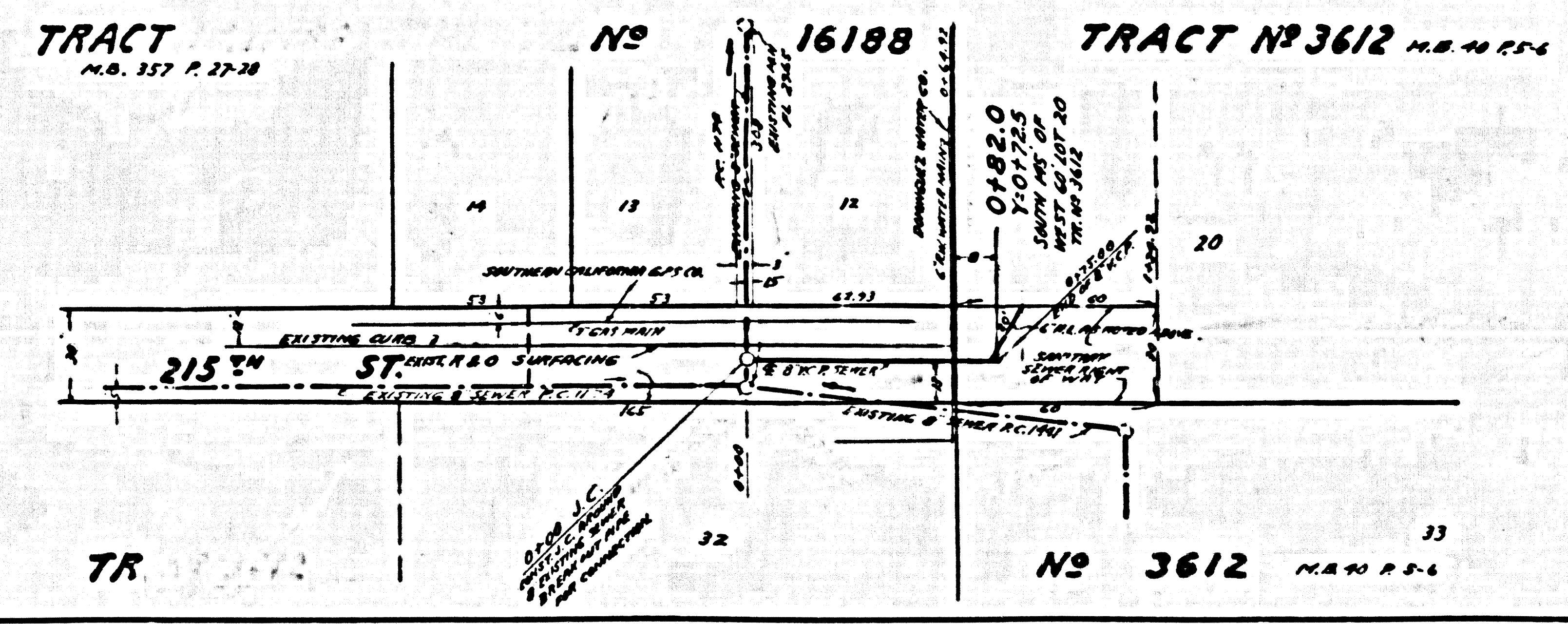
NO CHARGE FOR CONNECTIONS

Edward J. Smith



NO CHARGE FOR CONNECTIONS

29,446



8732-58