

PUENTE BLDG. DIST. NO. 2

PROFILE ALIGNMENT AND GRADE OF **P.C.5582**
SANITARY SEWERS PAGE 1
 TO BE CONSTRUCTED IN **J.N.0353.90**
TRACT N° 25576

PRIVATE CONTRACT NO. 5582

W.S. 38
 8 SHEETS, 10 PAGES

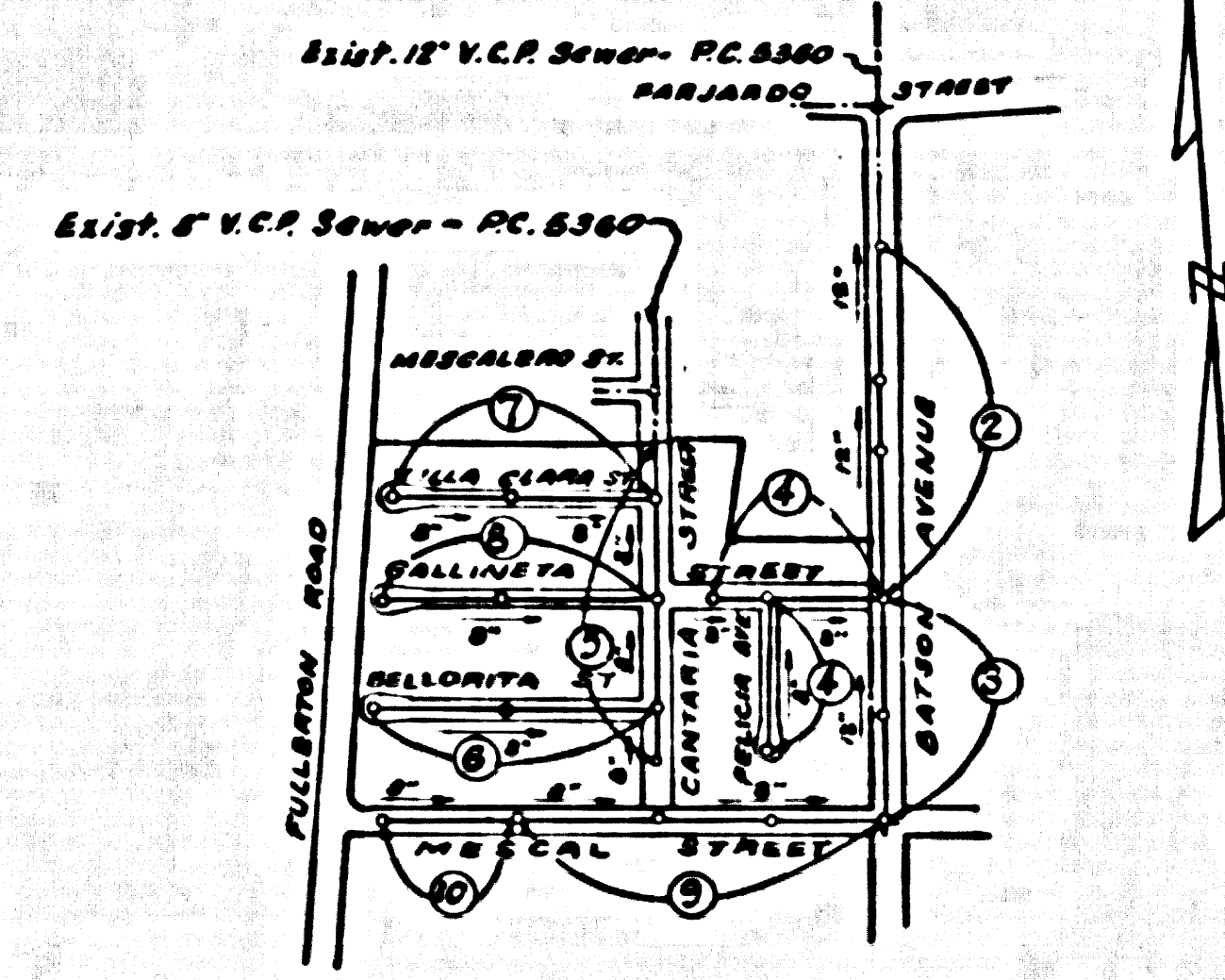
SCALE: VERT. 1"=4'
 HORIZ. 1"=40' JUNE 1960

PREPARED IN THE OFFICES OF
NATIONAL ENGINEERING CO.

By: *E. J. Apper*
 REG. C. E. NO. 5828
 FOR LEGEND SEE PLAN NO. S-A-44

30,171

- NOTES:**
1. PROVIDE STAKES ON THE PROPERTY LINE OR PROPERTY LINES PRODUCED AT RIGHT ANGLES TO THE SEWER LINE AT THE CENTER LINE OF EACH MANHOLE.
 2. NO REPRESENTATIVE OF THE COUNTY ENGINEER WILL SURVEY OR LAY OUT ANY PORTION OF THE WORK.
 3. THE OWNER OR HIS AUTHORIZED REPRESENTATIVE SHALL FURNISH THE COUNTY ENGINEER WITH GRADE SHEETS AND STATIONING FOR ALL HOUSE LATERALS AND Y BRANCHES AND SHALL PROVIDE STAKES FOR THEM AT THEIR PROPER LOCATIONS WITH STATIONING PLAINLY MARKED. ANY CHANGE IN LOCATION SHALL BE REQUESTED IN WRITING BY THE OWNER OR HIS REPRESENTATIVE.
 4. THE PRIVATE ENGINEER SHALL FURNISH THE HOUSE LATERAL DEPTH AT THE PROPERTY LINE BELOW THE TOP OF CURB ELEVATION FOR EACH HOUSE LATERAL ON THE GRADE SHEET.
 5. NO REVISIONS SHALL BE MADE IN THESE PLANS WITHOUT THE APPROVAL OF THE COUNTY ENGINEER.
 6. USE STANDARD MANHOLE FRAMES AND COVERS, S-117.
 7. USE STANDARD STRENGTH PIPE EXCEPT AS NOTED.
 8. USE CEMENT MORTAR OR "WEDGE-LOCK" OR "SPEED-SEAL" FOR ALL V.C.P. JOINTS PER SPECS. SECS. 14 & 48.
 9. RESURFACE ALL TRENCH WITHIN PAVED AREA TO MEET L.A. COUNTY ROAD DEPT. OR CALIF. STATE HIGHWAY REQUIREMENTS IN ACCORDANCE WITH PERMITS.
 10. ENCASE FOUR FEET OF SEWER AT POINTS OF INTERFERENCE WITH POLES, CASE III, S-172.
 11. HOUSE LATERALS TO BE CONSTRUCTED WITH INVERTS AT PROPERTY LINE 6 FEET BELOW CURB GRADE.
 12. ALL STRUCTURES SHALL BE BRICK SEWER STRUCTURES, S-104.
 13. FOR ALLOWABLE LEAKAGE TEST USE FORMULA NO. 1, SPECS. SEC. 54.
 14. MANHOLE TOPS IN UNIMPROVED RIGHTS-OF-WAY TO BE SIX INCHES ABOVE FINISHED GRADE.
 15. THE CONTRACTOR SHALL NOTIFY THE CONSTRUCTION DIVISION BY TELEPHONE, MADISON 3-4747, AT LEAST TWENTY-FOUR HOURS BEFORE STARTING ANY WORK UNDER THIS CONTRACT.
 16. STANDARD SPECIFICATIONS DATED JAN. 1, 1960 APPLY IN CONSTRUCTION OF THIS PROJECT.



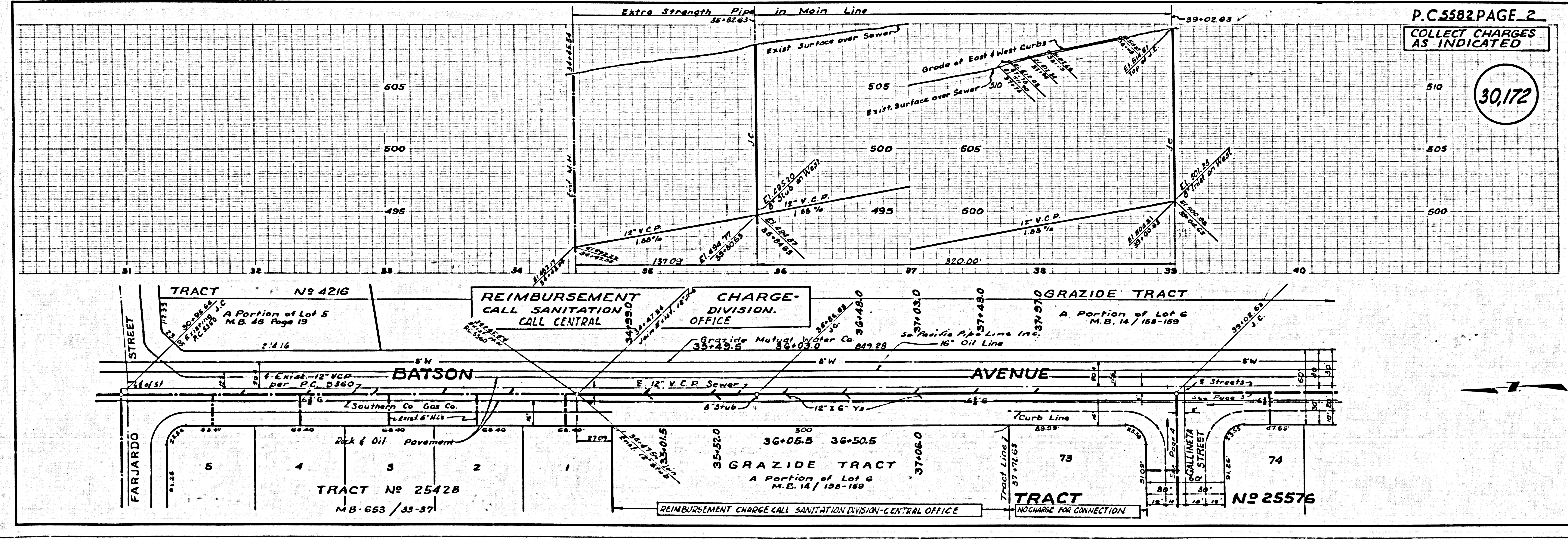
INDEX MAP
 Scale 1" = 600'
TRACT N° 25576
 P.C. 5582

BENCH MARK B.M. 44-12
 Fifth Ave. Anaheim-Puente Road & Fullerton Road 18.3' & 12' S. of S. intersection of Fifth Ave & Fullerton Road on the N'ly prolongation of the E'ly edge of Fullerton Road. Standard C.S. Man. in handhole stamped B.M. 44-12 1955 R.E.63. P.B. 1366-114 1955 Adj. Elev. 483.600

COLLECT CHARGES AS INDICATED
A.R. Olson 9/23/60

NOTE:
 GRADES TO WHICH THIS IMPROVEMENT IS TO BE CONSTRUCTED ARE SHOWN ON PLANS AND PROFILES. GRADE POINTS FOR TOP OF CURBS, CENTER LINE OF STREETS, OR CENTER LINE OF ALLEYS ARE SHOWN BY CIRCLES ON PROFILES. AT ALL POINTS BETWEEN DESIGNATED POINTS THE GRADE SHALL BE ESTABLISHED SO AS TO CONFORM TO A STRAIGHT LINE DRAWN BETWEEN SAID DESIGNATED POINTS.
 ELEVATIONS ARE IN FEET ABOVE U.S.C. & G.S. SEA LEVEL DATUM OF 1929.
 THIS DRAWING AND THE DATA HEREON ARE HEREBY MADE A PART OF THE SPECIFICATIONS.
 WORK SHALL BE CONSTRUCTED ACCORDING TO SPECIFICATIONS ON FILE IN THE OFFICE OF THE COUNTY ENGINEER AND SHALL BE PROSECUTED ONLY IN THE PRESENCE OF THE COUNTY ENGINEER.
 BEFORE WORK CAN BE STARTED, THE CONTRACTOR MUST OBTAIN A PERMIT TO EXCAVATE IN COUNTY STREETS FROM THE L.A. COUNTY ROAD DEPT., DISTRICT OFFICE NO. 1 AND PAY A FEE TO THE COUNTY ENGINEER, ROOM 304 PAN AMERICAN BUILDING, 253 SO. BROADWAY SUFFICIENT TO COVER THE COST OF CONSTRUCTION INSPECTION AND RECORD PLANS.
 APPROVAL OF THIS PLAN BY THE COUNTY OF LOS ANGELES DOES NOT CONSTITUTE A REPRESENTATION AS TO THE ACCURACY OF THE LOCATION OR THE EXISTENCE OR NON-EXISTENCE OF ANY UNDERGROUND UTILITY PIPE, OR STRUCTURE WITHIN THE LIMITS OF THIS PROJECT. THIS NOTE APPLIES TO ALL PAGES.
 IF WORK IS TO BE DONE IN A STATE HIGHWAY, A PERMIT MUST BE OBTAINED FROM THE STATE OF CALIFORNIA, DIVISION OF HIGHWAYS, 120 SOUTH BRINKIN STREET.

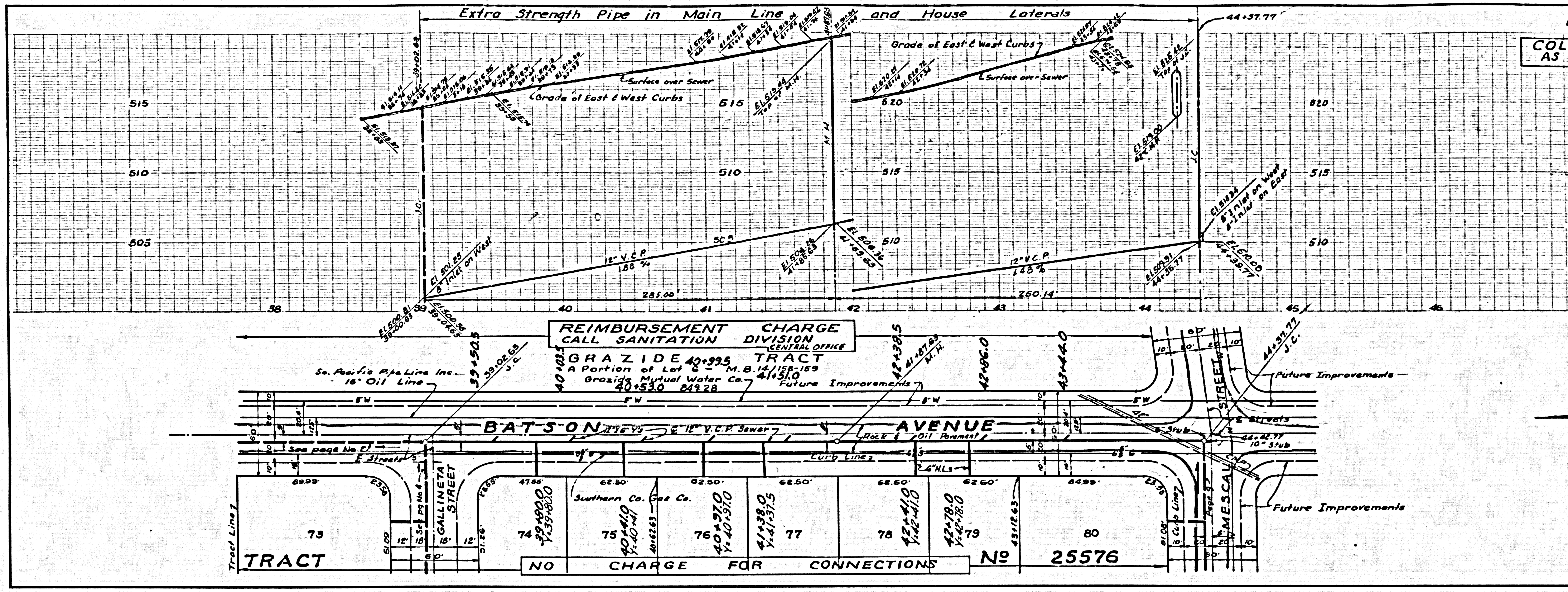
COUNTY OF LOS ANGELES, CALIFORNIA
 APPROVED, JOHN A. LAMBIE, COUNTY ENGINEER
 APPROVED, C.E. COMPTON, CHIEF ENGINEER
 CO. SAN. DIST. NO. 21
 BY: *E. J. Apper* DIST. SANITATION ENGINEER
 BY: *M. J. ...* OFFICE ENGINEER
 CHECKED BY: *W. Oide* 9-23-60
 OFFICE OF COUNTY ENGINEER, REG. C. E. NO. 5446
 SUBMITTED *W.C. ...* SAN DIMAS REGIONAL ENGINEER



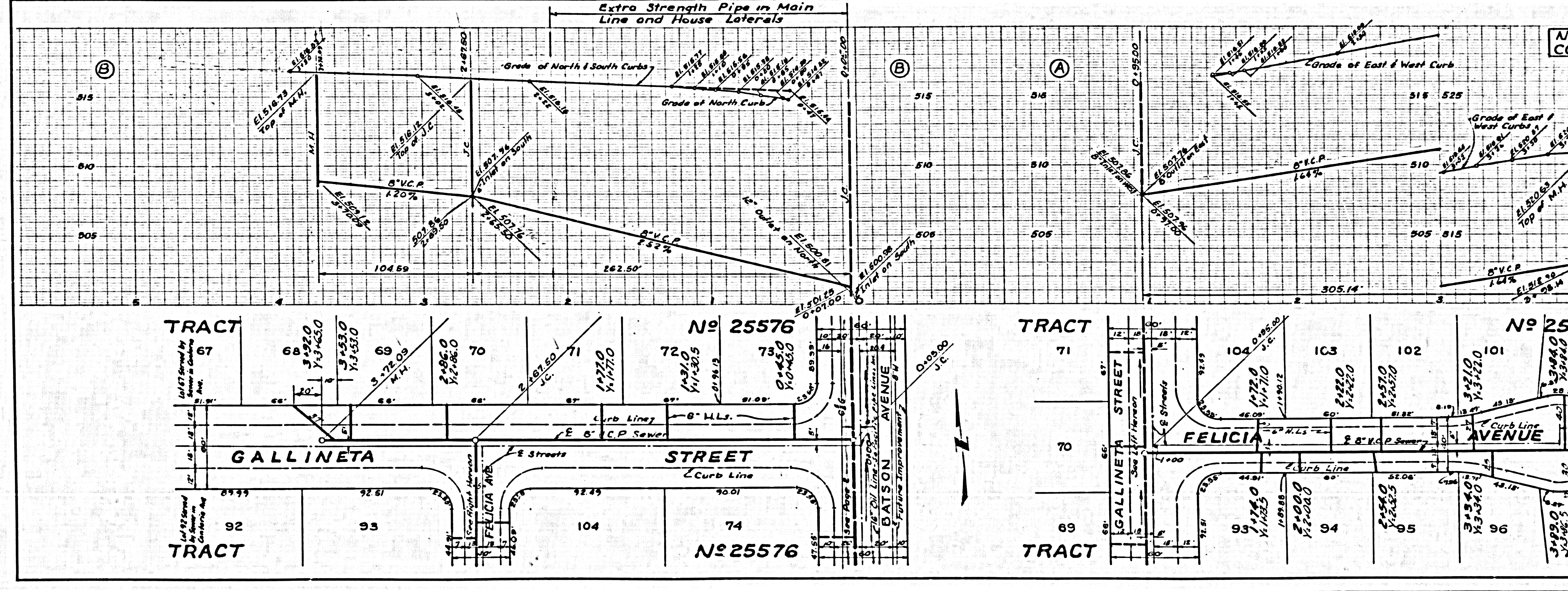
P.C.5582 PAGE 2
COLLECT CHARGES AS INDICATED

30,172

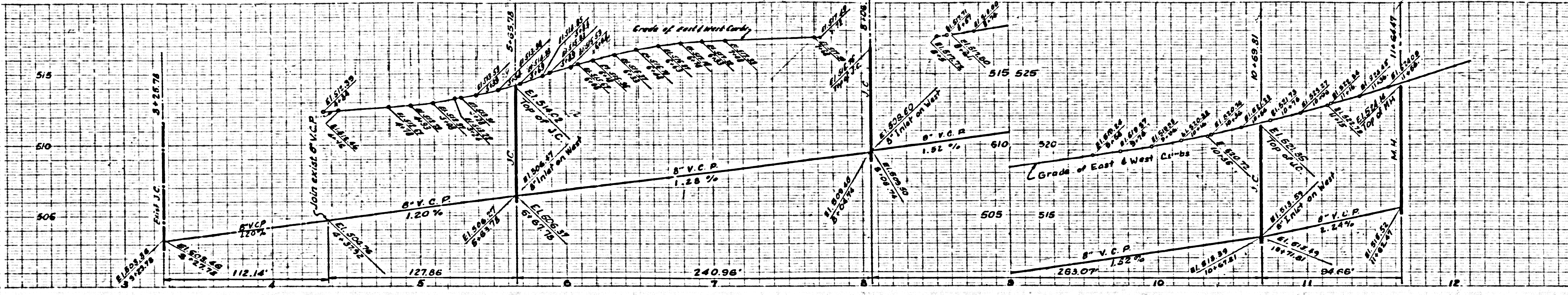
30,173



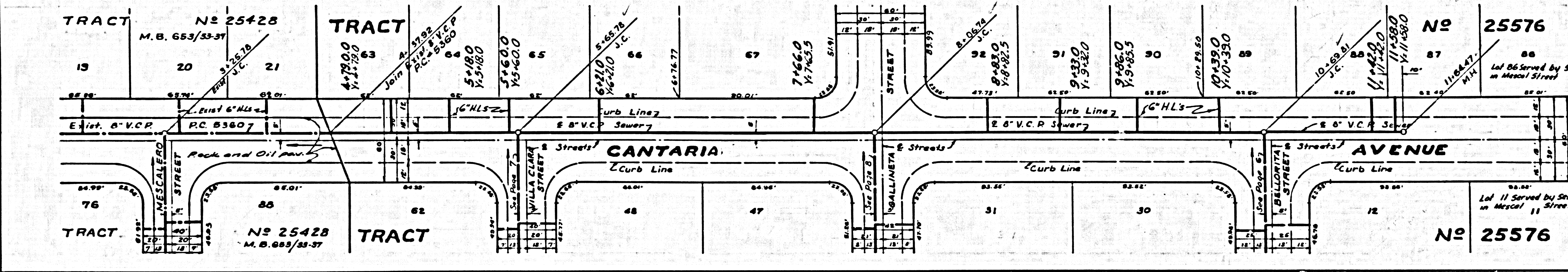
30,174



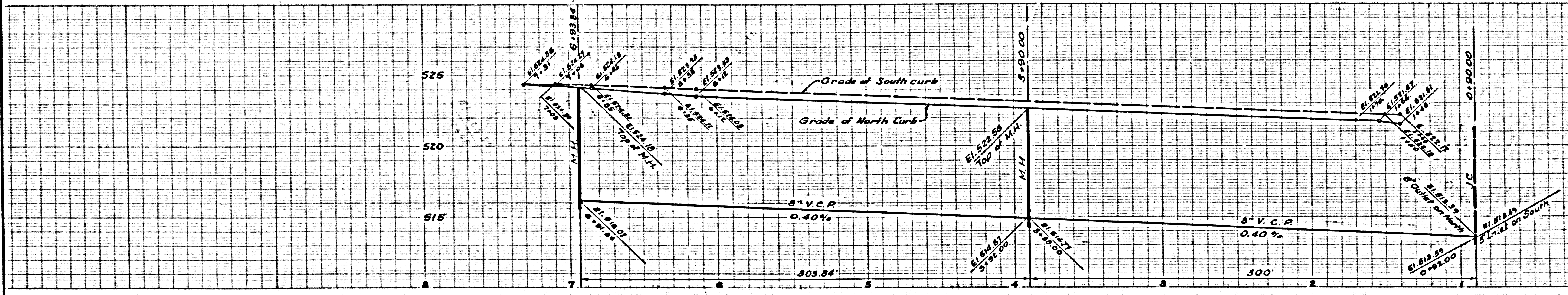
NO CHARGE FOR CONNECTIONS



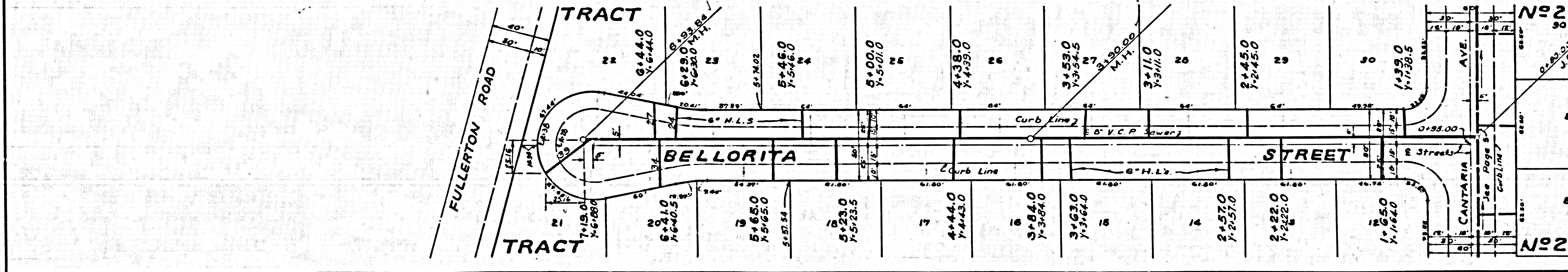
30,175



NO CHARGE FOR CONNECTIONS

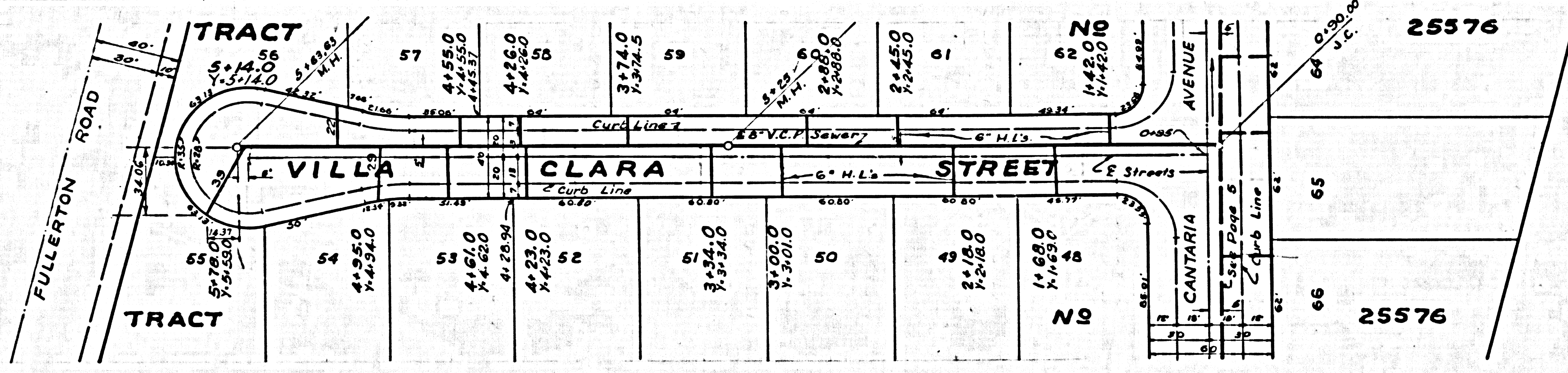
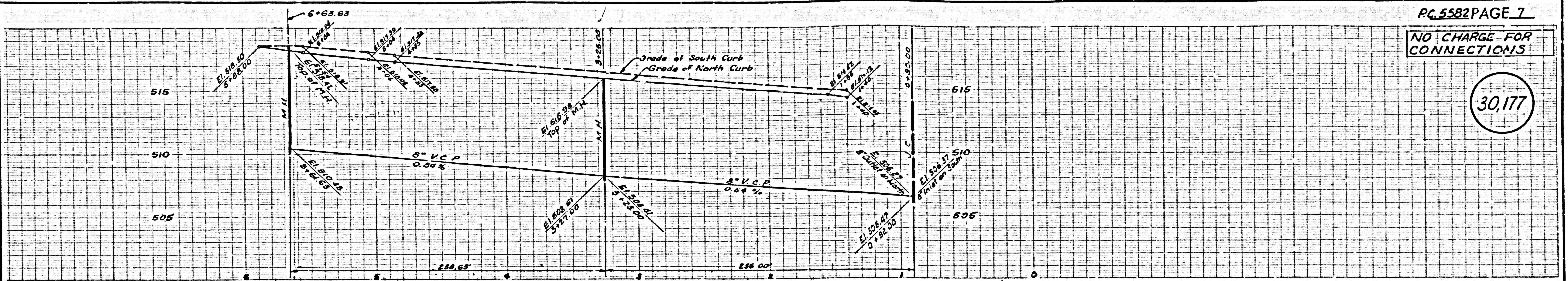


30,176



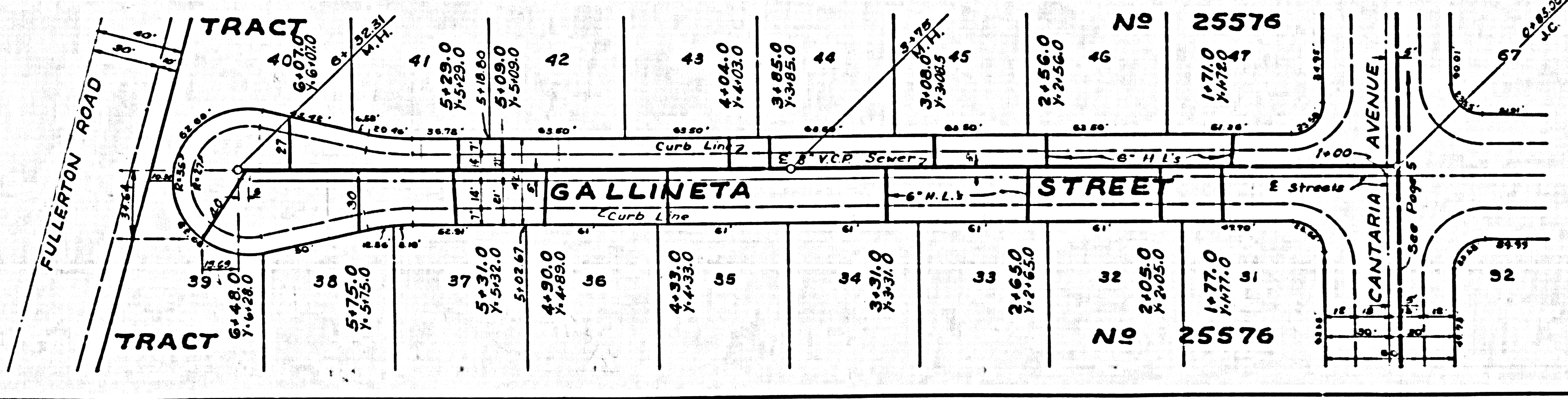
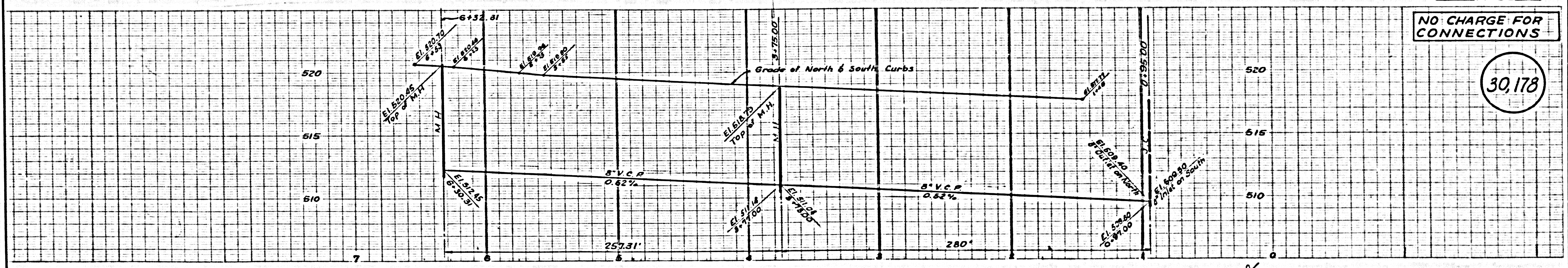
NO CHARGE FOR CONNECTIONS

30,177



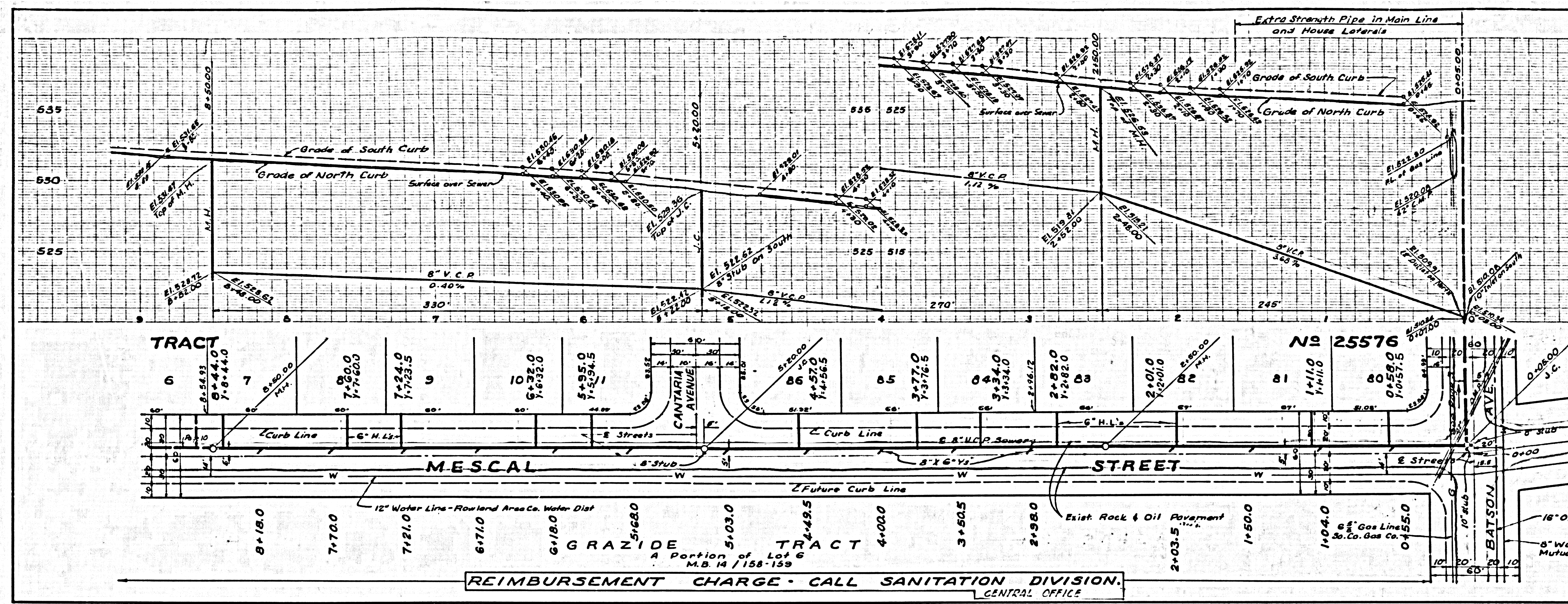
NO CHARGE FOR CONNECTIONS

30,178



COLLECT CHARGES AS INDICATED.

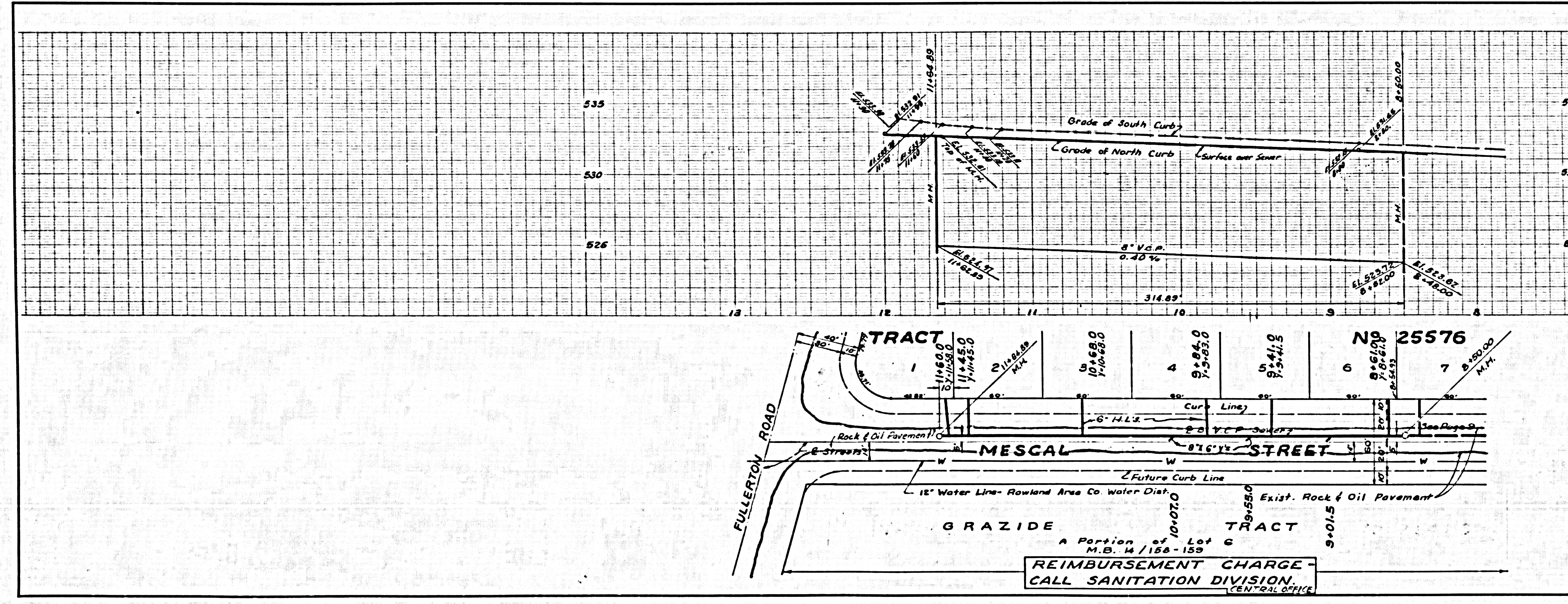
30,179



REIMBURSEMENT CHARGE - CALL SANITATION DIVISION, CENTRAL OFFICE

COLLECT CHARGES AS INDICATED.

30,180



REIMBURSEMENT CHARGE - CALL SANITATION DIVISION, CENTRAL OFFICE