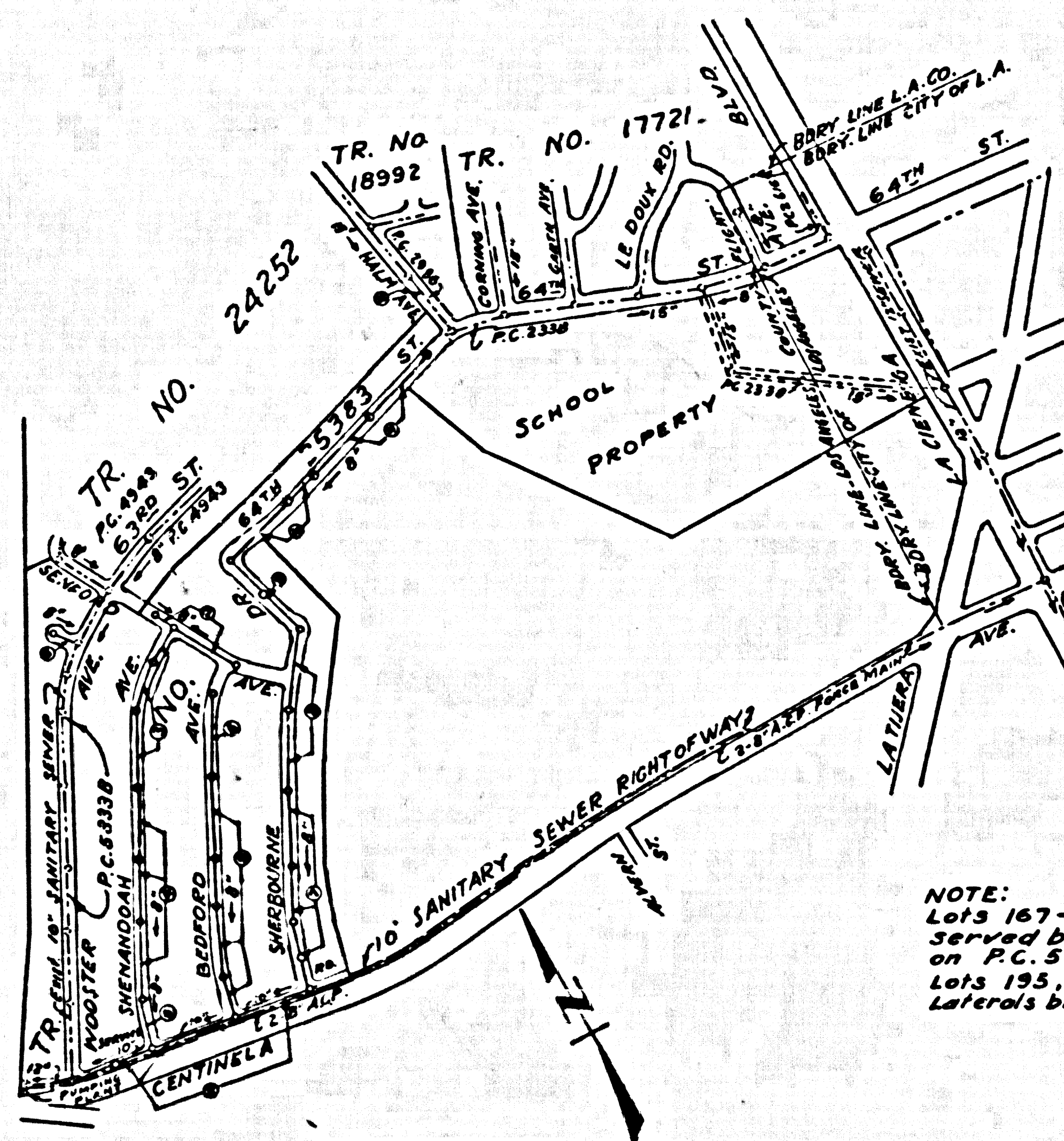


B.M. L.Q. 754-360 B.M. A14 Elev. 184.17 Bait Washer Set in Lead 2 W. of N.W. Return of W. E. Rampa off Janson Ave. to La Cienega Blvd. L.A. L.F.B. 200-1 (El. 183.745) R.R. Dept. Elev.

B.M. L.A.I. Company P.B. 263 Pg. 3 Elev. 135.75 Chasleria Knob E. curb Corning Ave. N.E. Return 64751 Street and Corning Ave.

B.M. L.A.I. Company P.B. 263 Pg. 8 Elev. 41.03 Spk. Set in Lead No. 7 C. Centinela Ave. East P.L. of Dow Chemical Co.

NOTE:  
Old L.A. City Datum - Add 5.575 for Road Department  
Old L.A. City Datum - Add 5.775 for U.S.C. & G.S. Sea Level Datum of 1929



NOTE:  
Lots 167-194, 197, 201-220 are served by House Laterals built on P.C. 53338  
Lots 195, 196 served from House Laterals built on P.C. 4943

INDEX MAP  
TRACT NO. 25383  
P.C. NO. 5583  
SCALE 1" = 600'

LENNOX BLDG. DIST. NO.7

- NOTES:
1. PROVIDE STAKES ON THE PROPERTY LINE OR PROPERTY LINES PRODUCE AT RIGHT ANGLES TO THE SEWER LINE AT THE CENTER LINE OF EACH MANHOLE.
  2. NO REPRESENTATIVE OF THE COUNTY ENGINEER WILL SURVEY OR LAY OUT ANY PORTION OF THE WORK.
  3. THE OWNER OR HIS AUTHORIZED REPRESENTATIVE SHALL FURNISH THE COUNTY ENGINEER WITH GRADE SHEETS AND STATIONING FOR ALL HOUSE LATERALS AND Y BRANCHES AND SHALL PROVIDE STAKES FOR THEM AT THEIR PROPER LOCATIONS WITH STATIONING PLAINLY MARKED. ANY CHANGES IN LOCATION SHALL BE REQUESTED IN WRITING BY THE OWNER OR HIS REPRESENTATIVE.
  4. THE PRIVATE ENGINEER SHALL FINISH THE HOUSE LATERAL WITHIN AS THE PROPERTY LINE BELOW THE TOP OF CURB ELEVATION FOR EACH HOUSE LATERAL ON THE GRADE SHEET.
  5. NO DIVISIONS SHALL BE MADE IN THESE PLANS WITHOUT THE APPROVAL OF THE COUNTY ENGINEER.
  6. USE STANDARD MANHOLE FRAMES AND COVERS, 3-0-117, EXCEPT AS NOTED.
  7. USE STANDARD STRENGTH PIPE EXCEPT AS NOTED.
  8. USE CEMENT MORTAR OR "WEDGAL-LOC" OR "SPEED-SEAL" FOR ALL V.C.P. JOINTS PER SPECS. SECS. 16 & 17.
  9. RESURFACE ALL TRENCH WITHIN PAVED AREA TO MEET L.A. COUNTY ROAD DEPT. OR CALIF. STATE HIGHWAY REQUIREMENTS IN ACCORDANCE WITH PERMITS.
  10. ENCASE FOUR FEET OF SEWER AT POINTS OF INTERFERENCE WITH POLES, CASE 11, 3-0-172.
  11. HOUSE LATERALS TO BE CONSTRUCTED WITH INVERTS AT PROPERTY LINE 6 FEET BELOW CURB GRADE EXCEPT AS NOTED.
  12. ALL STRUCTURES SHALL BE BRICK SEWER STRUCTURES, S. 100, EXCEPT AS NOTED.
  13. FOR ALLOWABLE LEAKAGE TEST USE FORMULA NO. 2, SPECS. SEC. 14.
  14. MANHOLE TOPS IN UNIMPROVED RIGHTS-OF-WAY TO BE SIX INCHES ABOVE FINISHED GRADE.
  15. THE CONTRACTOR SHALL NOTIFY THE CONSTRUCTION & STORM DRAIN DIVISION BY TELEPHONE, MADISON 3-474, ESTABLISHED AT LEAST TWENTY-FOUR HOURS BEFORE STARTING ANY WORK UNDER THIS CONTRACT.
  16. STANDARD SPECIFICATIONS DATED JAN. 1, 1960 APPLY IN THE CONSTRUCTION OF THIS PROJECT.

NO CHARGE FOR CONNECTIONS  
DATE 7-25-60

PROFILE ALIGNMENT AND GRADE OF P.C. 5583  
SANITARY SEWERS PAGE 1  
TO BE CONSTRUCTED IN IN. 0353.91

TRACT NO. 25383  
PRIVATE CONTRACT NO. 5583

W.S. 24  
6 SHEETS; 12 PAGES  
SCALE: HORIZ. 1" = 40' VERT. 1" = 4'  
JUNE, 1960  
PREPARED IN THE OFFICES OF

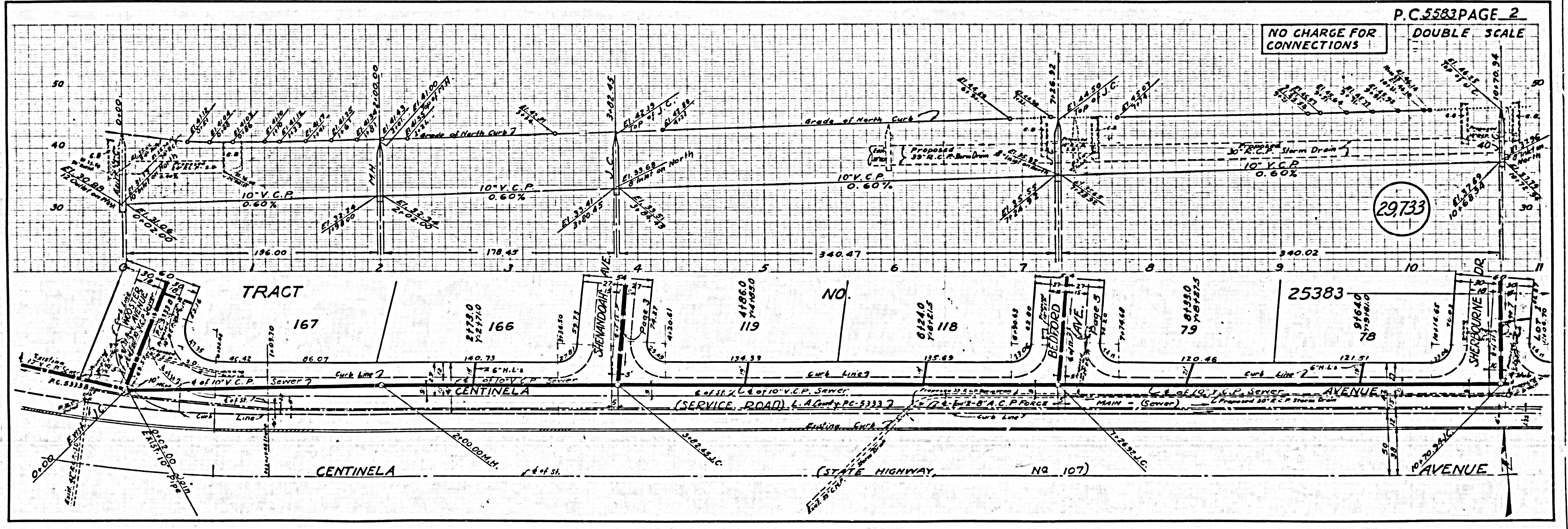
*J. C. Conroy*  
C.E. No. 1629 REG. C. E. NO. 1629

FOR LEGEND SEE PLAN NO. S-A-44

NOTE:  
GRADES TO WHICH THIS IMPROVEMENT IS TO BE CONSTRUCTED ARE SHOWN ON PLANS AND PROFILE. GRADE POINTS FOR TOP OF CURBS, CENTER LINE OF STREETS OR CENTER LINE OF ALLEYS ARE SHOWN BY CIRCLES ON PROFILES. AT ALL POINTS BETWEEN DESIGNATED POINTS THE GRADE SHALL BE ESTABLISHED SO AS TO CONFORM TO A STRAIGHT LINE DRAWN BETWEEN SAID DESIGNATED POINTS.  
ELEVATIONS ARE IN FEET ABOVE L.A. CITY DATUM AND 5.775 TO OBTAIN U.S.C. & G.S. SEA LEVEL DATUM OF 1929.  
THIS DRAWING AND THE DATA HEREON ARE HEREBY MADE A PART OF THE SPECIFICATIONS.  
WORK SHALL BE CONSTRUCTED ACCORDING TO SPECIFICATIONS ON FILE IN THE OFFICE OF THE COUNTY ENGINEER AND SHALL BE PROSECUTED ONLY IN THE PRESENCE OF THE COUNTY ENGINEER.  
BEFORE WORK CAN BE STARTED THE CONTRACTOR MUST OBTAIN A PERMIT TO EXCAVATE IN COUNTY STREETS FROM THE L.A. COUNTY ROAD DEPT., DISTRICT OFFICE NO. 53, AND PAY A FEE TO THE COUNTY ENGINEER ROOM, JAPANESE AMERICAN BUILDING, 331 S.G. BROADWAY AT SUFFICIENT TO COVER THE COST OF CONSTRUCTION INSPECTION AND RECORD PLANS.  
APPROVAL OF THIS PLAN BY THE COUNTY OF LOS ANGELES DOES NOT CONSTITUTE A REPRESENTATION AS TO THE ACCURACY OF THE LOCATION OF OR THE EXISTENCE OR NON-EXISTENCE OF ANY UNDERGROUND UTILITY PIPE, OR STRUCTURE WITHIN THE LIMITS OF THIS PROJECT. THIS NOTE APPLIES TO ALL PAGES.  
IF WORK IS TO BE DONE IN A STATE HIGHWAY, A PERMIT MUST BE OBTAINED FROM THE STATE OF CALIFORNIA, DIVISION OF HIGHWAYS, 128 SOUTH SPRING STREET.

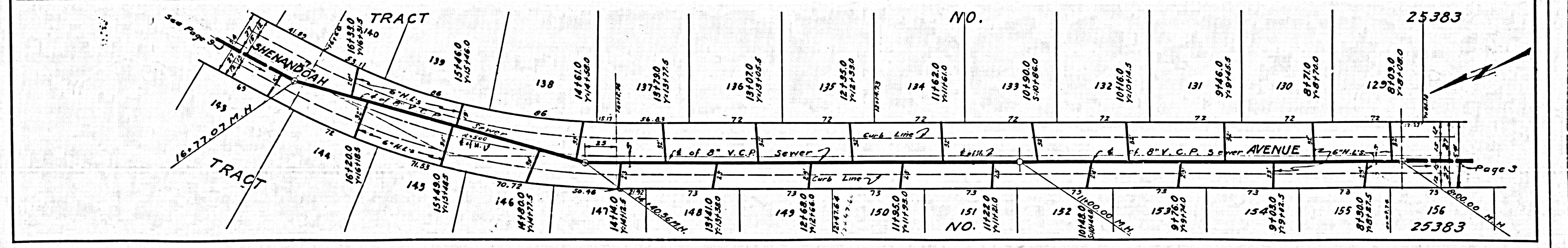
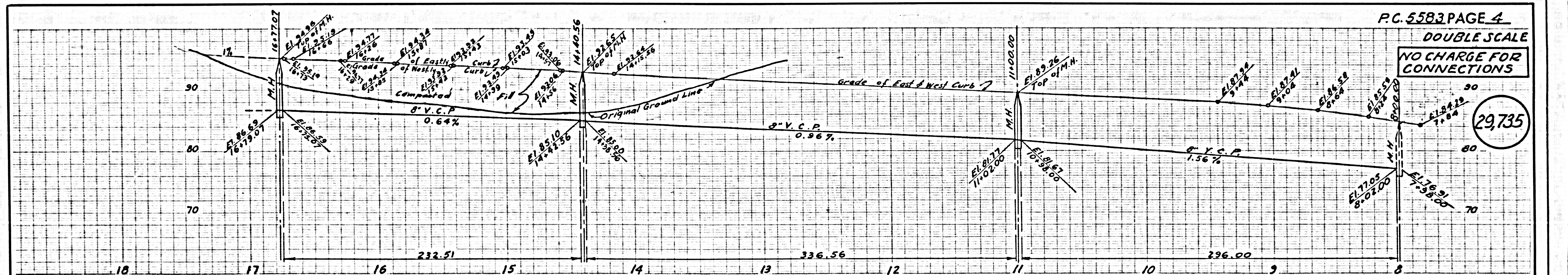
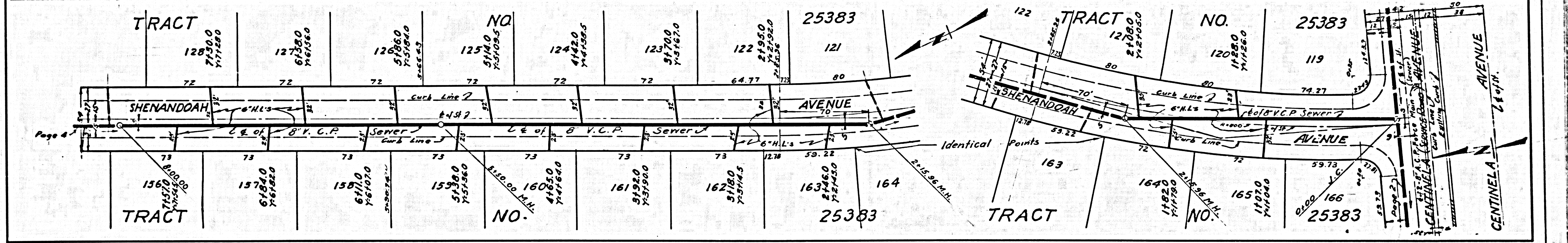
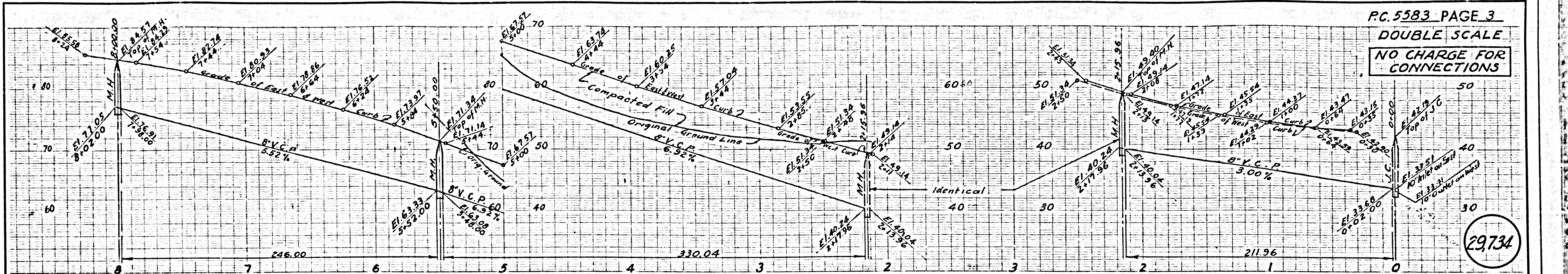
COUNTY OF LOS ANGELES, CALIFORNIA  
APPROVED, JOHN A. LAMBE, COUNTY ENGINEER APPROVED, E. R. DEXINGTON, C.E. REF. ENGINEER  
BY *E. J. Young* ASST. SANITATION ENGINEER BY *J. C. Conroy* OFFICE ENGINEER  
CHECKED BY *S. V. Under* 7-28-60  
OFFICE OF COUNTY ENGINEER, Rm. C. E. NO. 2446

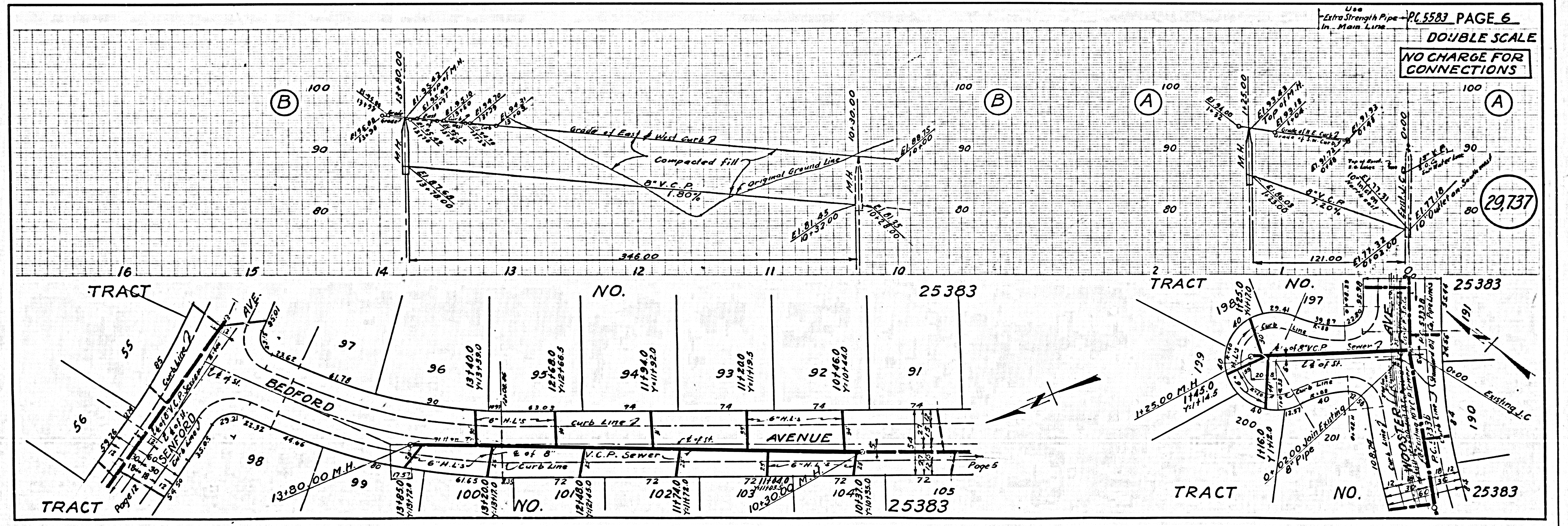
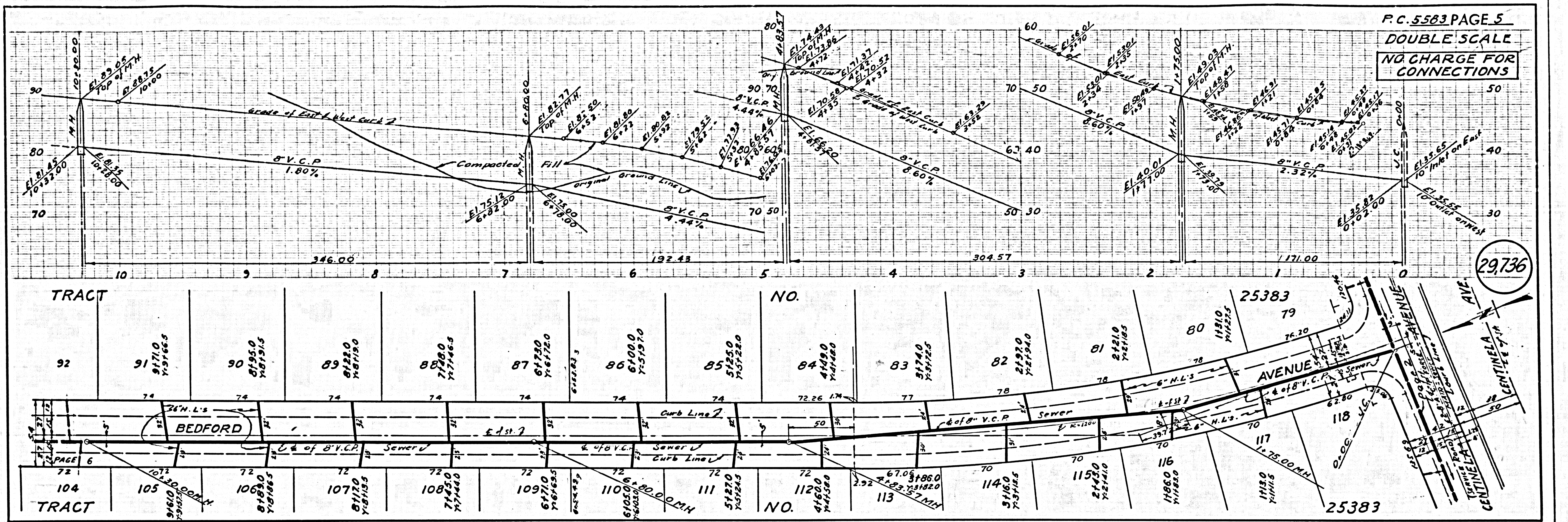
SUBMITTED: *Jack C. Conroy*  
Public Works - Centinela Valley Regional Engineer



NO CHARGE FOR CONNECTIONS  
DOUBLE SCALE

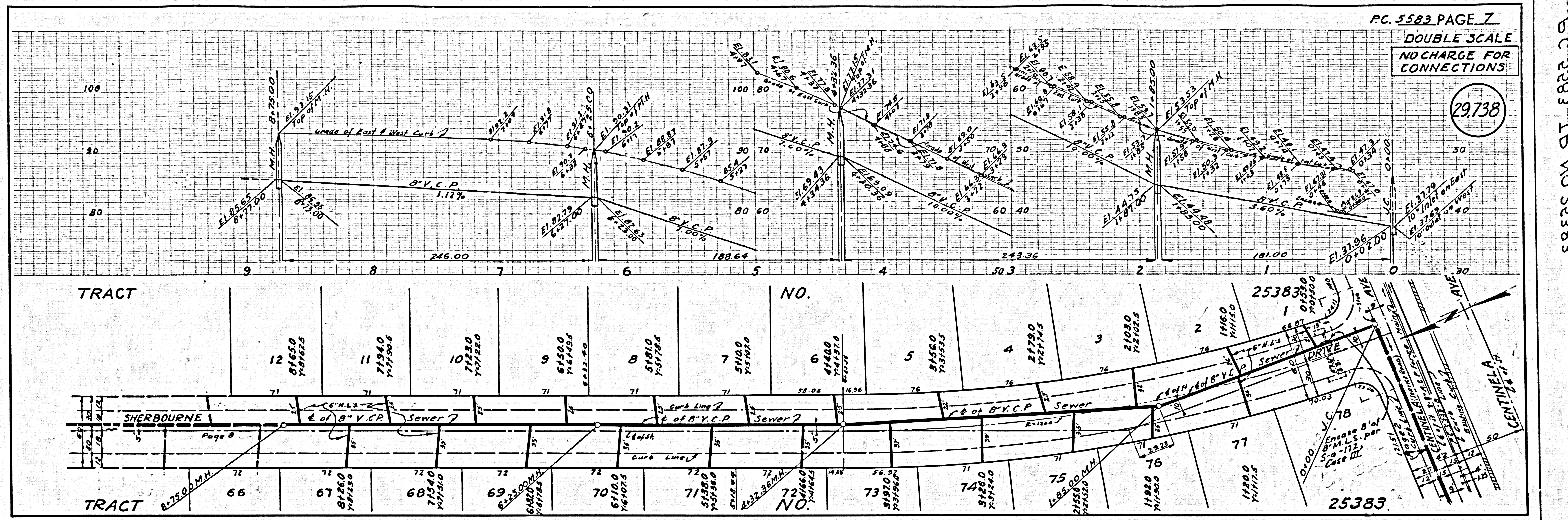
29,733





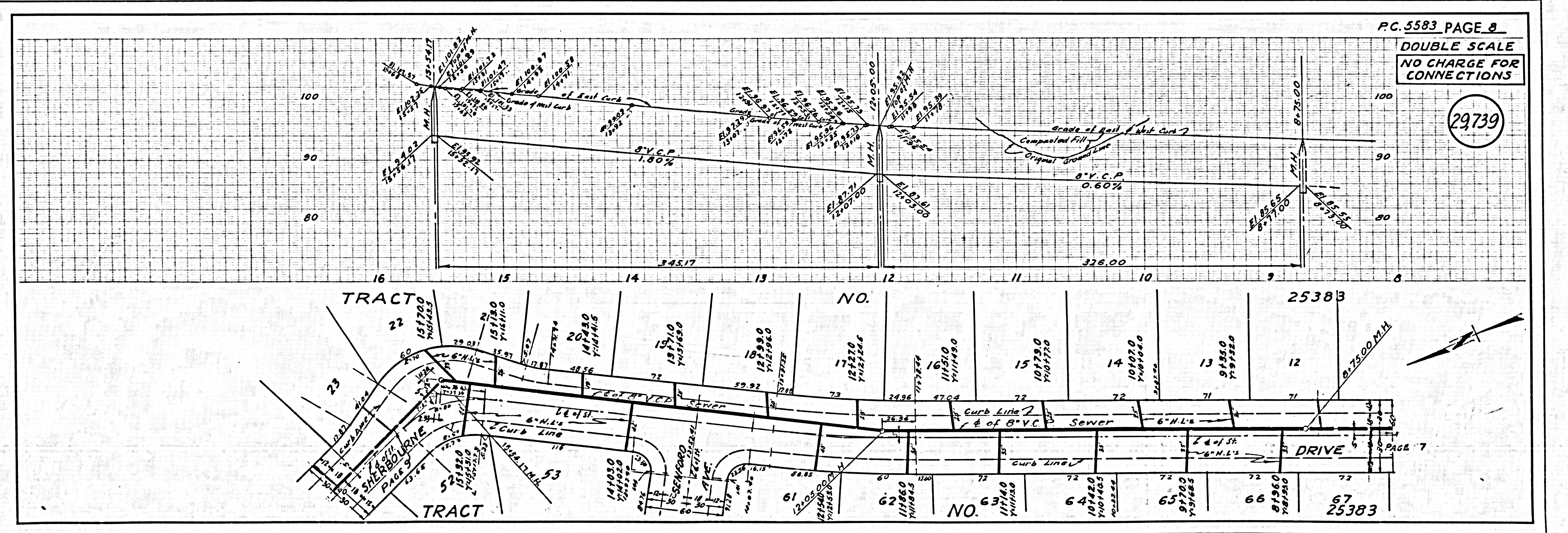
PC. 5583 PAGE 7  
 DOUBLE SCALE  
 NO CHARGE FOR CONNECTIONS

29738

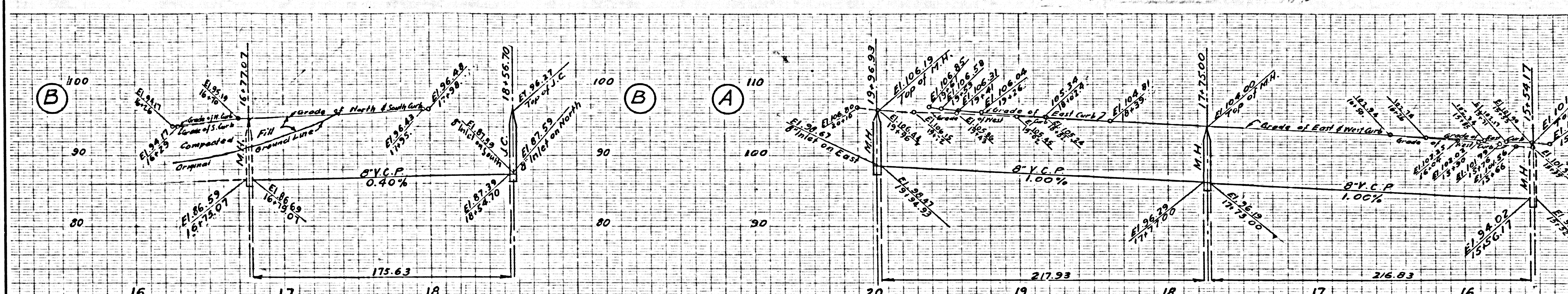


PC. 5583 PAGE 8  
 DOUBLE SCALE  
 NO CHARGE FOR CONNECTIONS

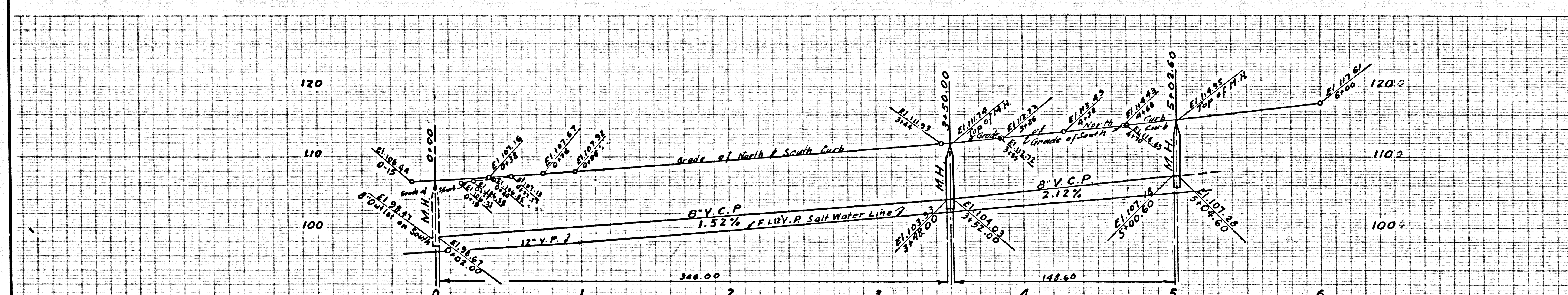
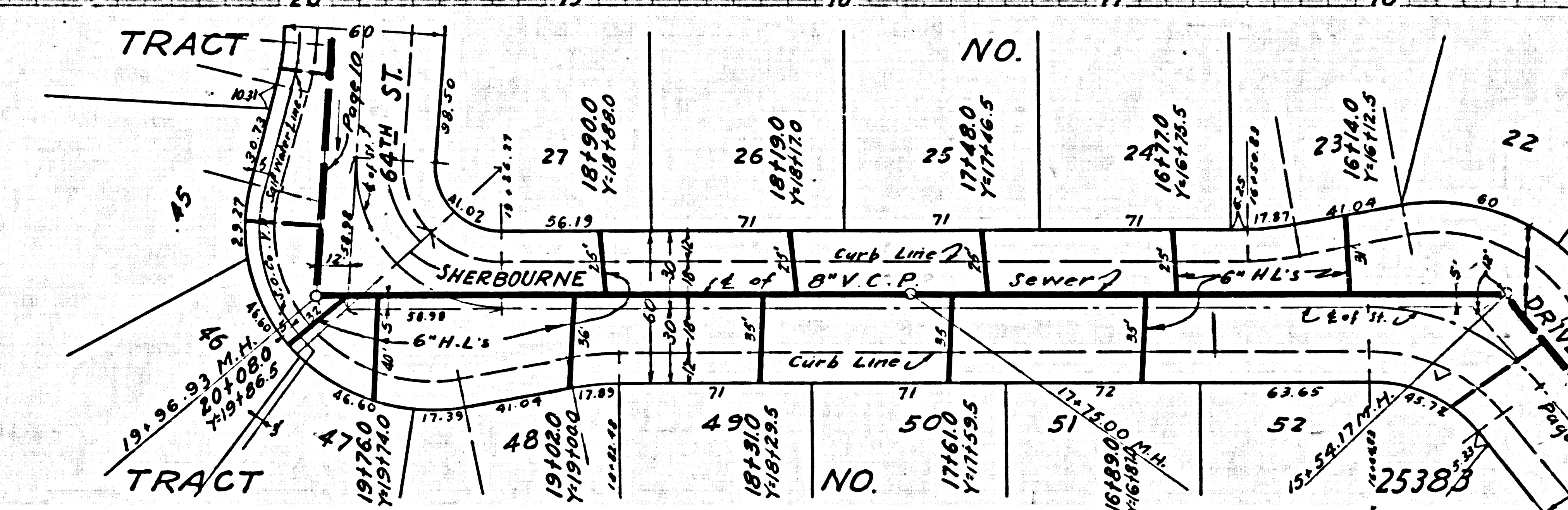
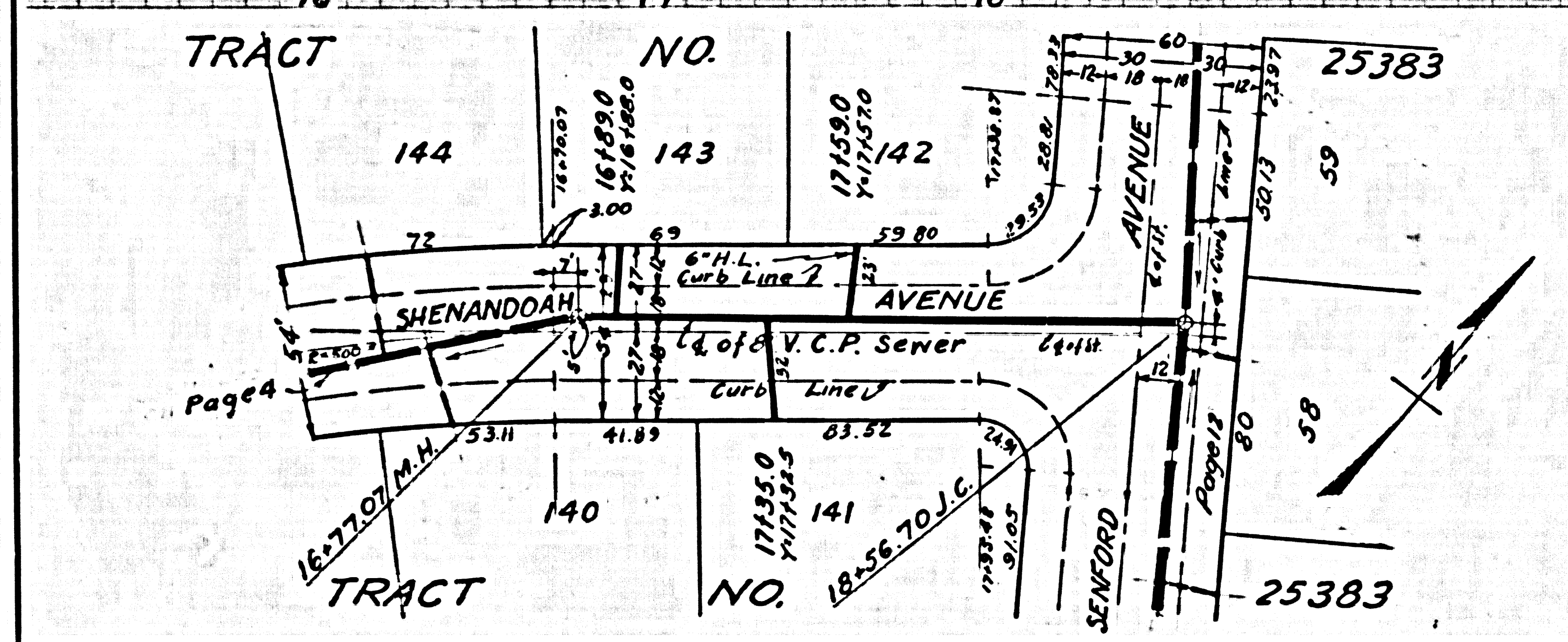
29739



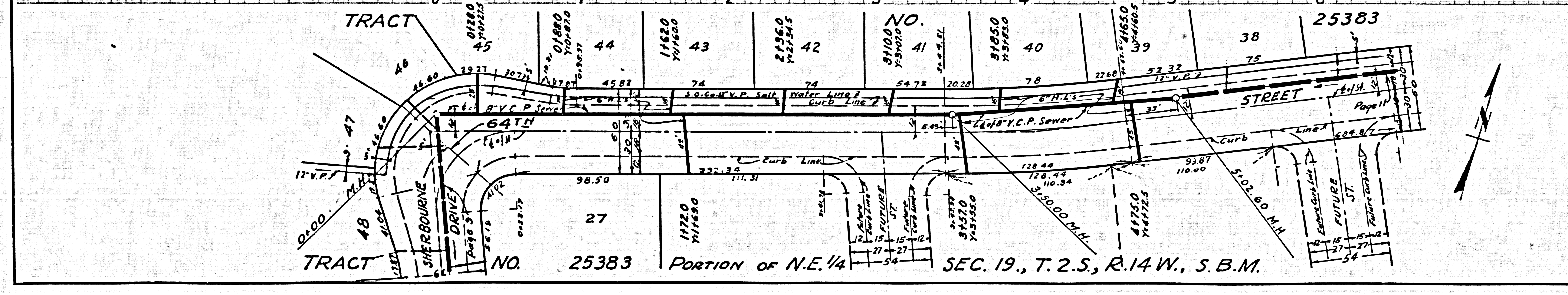
P.C. 2283 LR NO. 52383



29,740



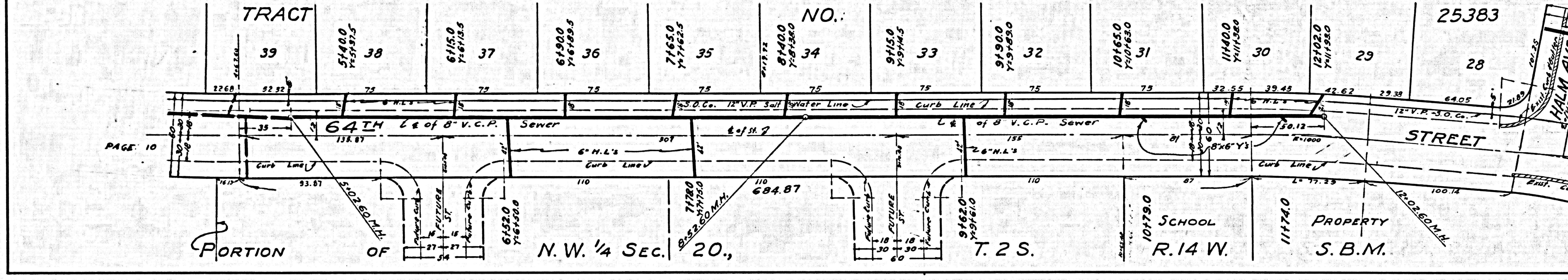
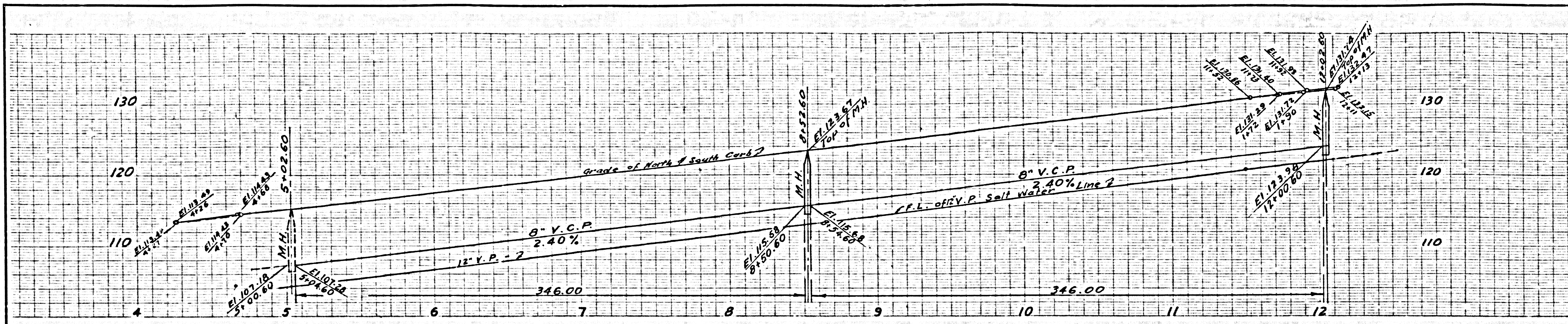
29,741



PORTION OF N.E. 1/4 SEC. 19., T. 2.S., R. 14 W., S. B.M.

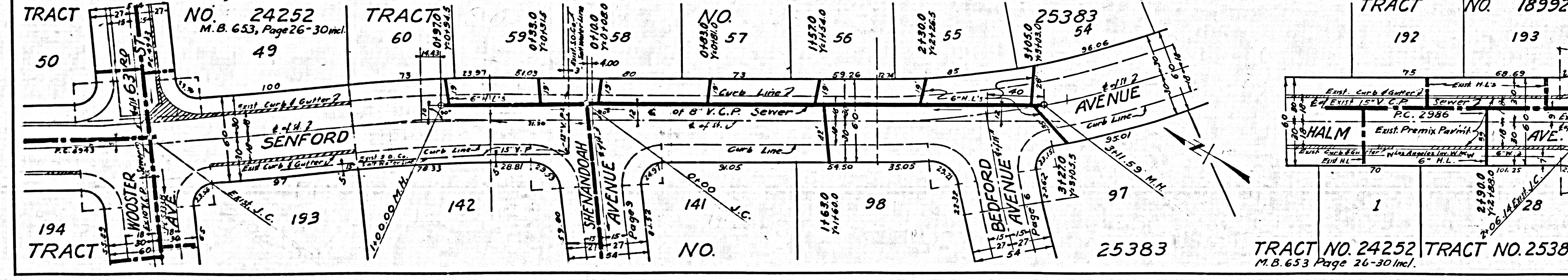
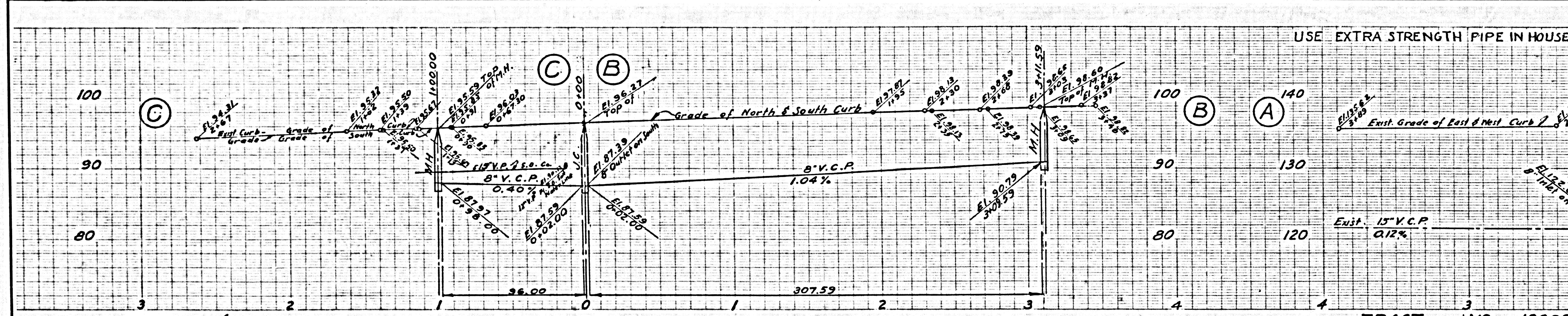
PC. 5583 PAGE 11  
 DOUBLE SCALE  
 NO CHARGE FOR CONNECTIONS

29,742



PC. 5583 PAGE 12  
 USE EXTRA STRENGTH PIPE IN HOUSE LATERALS DOUBLE SCALE  
 NO CHARGE FOR CONNECTIONS

29,743



PC. 2283 LR NO. 52383