

TEMPLE CITY BLDG. DIST. NO. 5

PROFILE ALIGNMENT AND GRADE OF P.C. 5585  
SANITARY SEWERS PAGE 1  
TO BE CONSTRUCTED IN J.N. 0353.93  
R/W N/O BRENTMEAD AVE.

PRIVATE CONTRACT NO. 5585

W.S. 14  
1 SHEETS; 2 PAGES  
SCALE: HORIZ. 1" = 40' VERT. 1" = 4'  
AUGUST, 1960  
PREPARED IN THE OFFICES OF

29,820

BY: *W.L. Hoffeditz*  
REG. C. E. No. 72

FOR LEGEND SEE PLAN NO. S-A-44

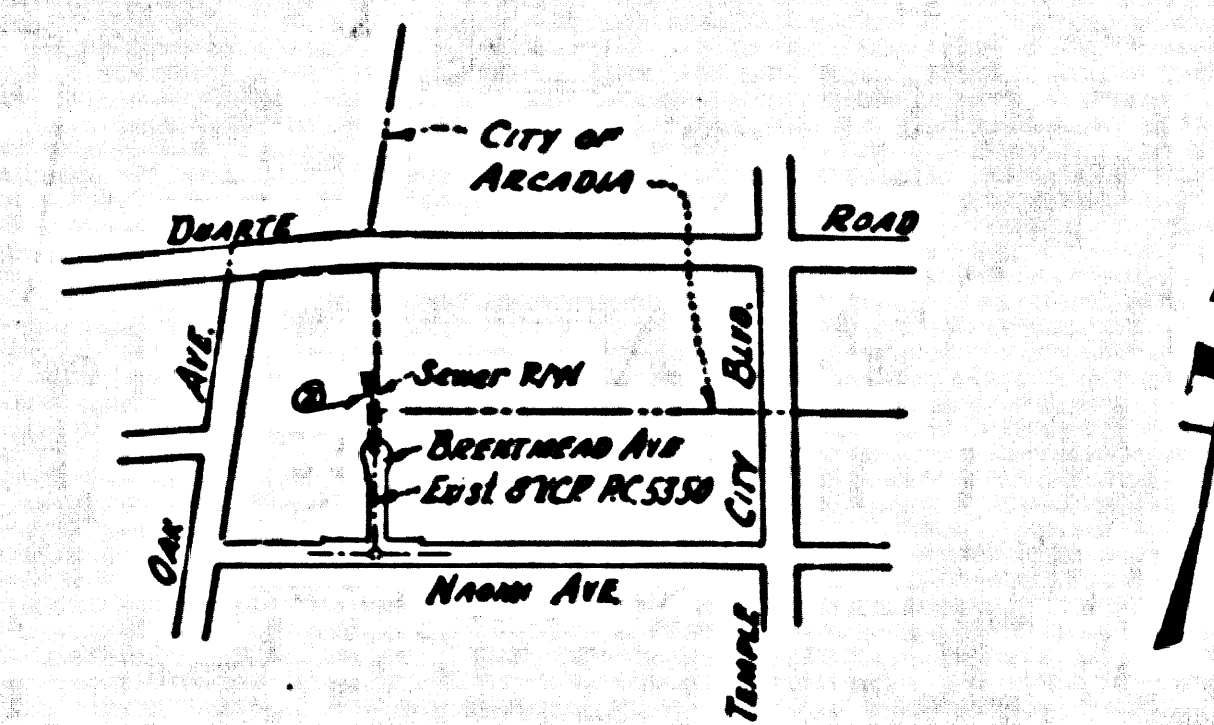
NOTE:  
GRADES TO WHICH THIS IMPROVEMENT IS TO BE CONSTRUCTED ARE SHOWN ON PLANS AND PROFILES. GRADE POINTS FOR TOP OF CURB, CENTER LINE OF STREETS, OR CENTER LINE OF ALLEYS ARE SHOWN BY CIRCLES ON PROFILES. AT ALL POINTS BETWEEN DESIGNATED POINTS THE GRADE SHALL BE ESTABLISHED SO AS TO CONFORM TO A STRAIGHT LINE GRADE BETWEEN SAID DESIGNATED POINTS.  
ELEVATIONS ARE IN FEET ABOVE U.S.C. & G.S. SEA LEVEL DATUM OF 1929.  
THIS DRAWING AND THE DATA HEREON ARE HEREBY MADE A PART OF THE SPECIFICATIONS.  
WORK SHALL BE CONSTRUCTED ACCORDING TO SPECIFICATIONS ON FILE IN THE OFFICE OF THE COUNTY ENGINEER AND SHALL BE PROSECUTED ONLY IN THE PRESENCE OF THE COUNTY ENGINEER.  
BEFORE WORK CAN BE STARTED, THE CONTRACTOR MUST OBTAIN A PERMIT TO EXCAVATE IN COUNTY STREETS FROM THE L. A. COUNTY ROAD D.P.T. DISTRICT OFFICE NO. 7, AND PAY A FEE OF \$100.00 PER DAY.  
THE SANITARIAN BUILDING, 233 S.W. BROADWAY, SUFFICIENT TO COVER THE COST OF CONSTRUCTION INSPECTION AND RECORD PLANS.  
APPROVAL OF THIS PLAN BY THE COUNTY OF LOS ANGELES DOES NOT CONSTITUTE A REPRESENTATION AS TO THE ACCURACY OF THE LOCATION OF OR THE EXISTENCE OR NON-EXISTENCE OF ANY UNDERGROUND UTILITY PIPE, OR STRUCTURE WITHIN THE LIMITS OF THIS PROJECT. THIS NOTE APPLIES TO ALL PAGES.  
IF WORK IS TO BE DONE IN A STATE HIGHWAY, A PERMIT MUST BE OBTAINED FROM THE STATE OF CALIFORNIA, DIVISION OF HIGHWAYS, 128 SOUTH SPRING STREET.

COUNTY OF LOS ANGELES, CALIFORNIA

APPROVED, JOHN A. LAMBIE, COUNTY ENGINEER APPROVED, C.E. COMPTON, CHIEF ENGINEER  
CO. AM. DIST. NO. 15  
BY: *E.E. Dwyer* 6127 SANITARIAN ENGINEER BY: *J.L. Compton* OFFICE ENGINEER  
CHECKED BY: *St. W. ...* OFFICE OF COUNTY ENGINEER, REG. C. E. NO. 9406  
SUBMITTED *N.F. Brannan* SAN GABRIEL VALLEY REGIONAL ENGINEER

BENCH MARK S.G. 808  
Spk of L. in E. curb Oak Ave. ± 12' S. of curb  
return of SE. corner Oak Ave. of Naomi Avenue  
mk'd T.E. 352  
Arcadio Quad. 1955 Adj. Elev. 496.018

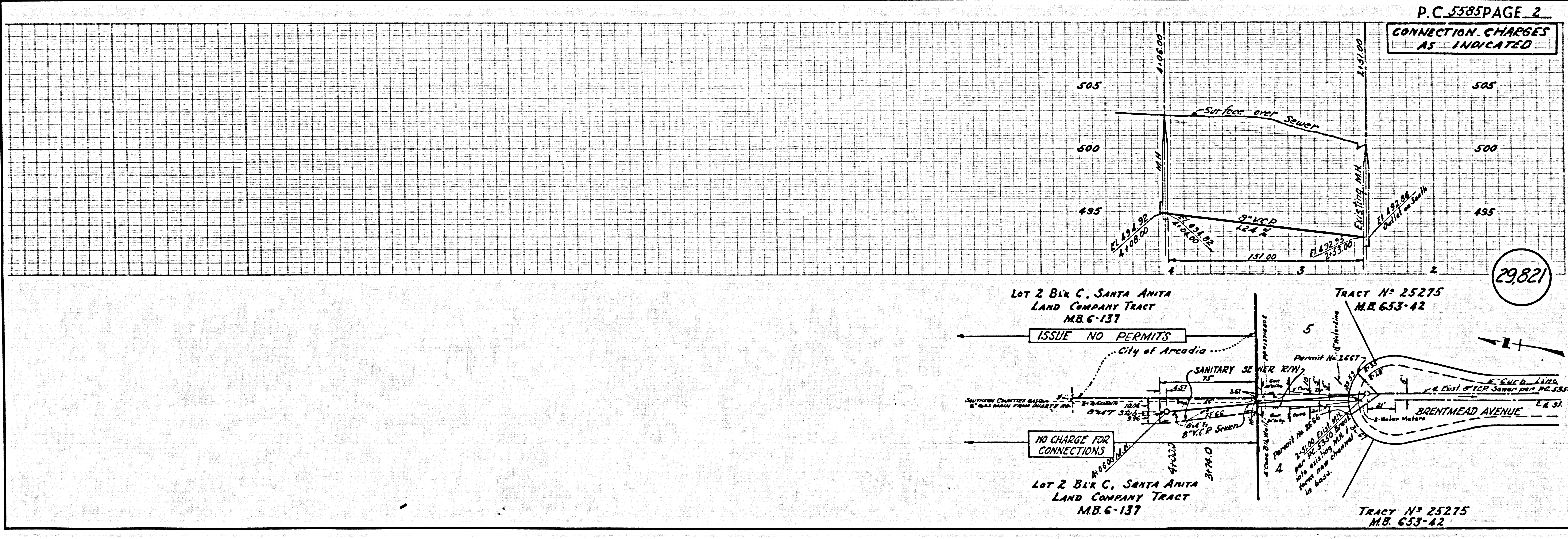
- NOTES:
1. PROVIDE STAKES ON THE PROPERTY LINE OR PROPERTY LINES PRODUCED AT RIGHT ANGLES TO THE SEWER LINE AT THE CENTER LINE OF EACH MANHOLE.
  2. NO REPRESENTATIVE OF THE COUNTY ENGINEER WILL SURVEY OR LAY OUT ANY PORTION OF THE WORK.
  3. THE OWNER OR HIS AUTHORIZED REPRESENTATIVE SHALL FURNISH THE COUNTY ENGINEER WITH GRADE SHEETS AND STATIONING FOR ALL HOUSE LATERALS AND Y BRANCHES AND SHALL PROVIDE STAKES FOR THEM AT THEIR PROPER LOCATIONS WITH STATIONING PLAINLY MARKED. ANY CHANGE IN LOCATION SHALL BE REQUESTED IN WRITING BY THE OWNER OR HIS REPRESENTATIVE.
  4. THE SANITARIAN BUILDING SHALL FURNISH THE HOUSE LATERAL AND THE RECORDS LIES BELOW THE TOP OF CURB OR BELOW THE GRADE OF THE HOUSE.
  5. NO REVISIONS SHALL BE MADE IN THESE PLANS WITHOUT THE APPROVAL OF THE COUNTY ENGINEER.
  6. USE STANDARD MANHOLE FRAMES AND COVERS, S-117.
  7. USE STANDARD STRENGTH PIPE.
  8. USE CEMENT MORTAR OR "WEDGE-LOCK" OR "SPEED-SEAL" FOR ALL V.C.P. JOINTS PER SPEC., SECS. 16 & 17.
  9. REINFORCE ALL TRENCH WITHIN PAVED AREA TO MEET L.A. COUNTY ROAD DEPT. OR CALIF. STATE HIGHWAY REQUIREMENTS IN ACCORDANCE WITH PERMITS.
  10. ENCASE FOUR FEET OF SEWER AT POINTS OF INTERFERENCE WITH POLES, CASE 11, S-172.
  11. HOUSE LATERALS TO BE CONSTRUCTED WITHIN HOUSES AT PROPERTY LINE ± FEET BELOW CURB GRADE EXCEPT AS NOTED.
  12. ALL STRUCTURES SHALL BE BRICK SEWER STRUCTURES, S-114.
  13. FOR ALLOWABLE LEAKAGE TEST USE FORMULA NO. 1, SPEC'S, SEC. 54.
  14. MANHOLE TOPS IN UNIMPROVED RIGHTS-OF-WAY TO BE LEVEL WITH FINISHED GRADE.
  15. THE CONTRACTOR SHALL NOTIFY THE CONSTRUCTION DIVISION BY TELEPHONE, MADISON 5-4747, SIX DAYS AT LEAST TWENTY-FOUR HOURS BEFORE STARTING ANY WORK UNDER THIS CONTRACT.
  16. STANDARD SPECIFICATIONS DATED JAN. 1960 SHALL APPLY IN THE CONSTRUCTION OF THIS PROJECT.



INDEX MAP  
P.C. 5585  
Scale: 1" = 600'

CONNECTION CHARGES  
AS INDICATED  
*W.L. Hoffeditz*

NO WATER WELLS ANY



P.C. 5585 PAGE 2  
CONNECTION CHARGES  
AS INDICATED

29,820