

PICO RIVERA BLDG. DIST. NO. 11.01

PROFILE ALIGNMENT AND GRADE OF P.C. 5587
 SANITARY SEWERS PAGE 1
 TO BE CONSTRUCTED IN

RIGHT OF WAY EAST OF ROSEMEAD BOULEVARD

PRIVATE CONTRACT NO. 5587

W.S. 36
 1 SHEETS; 2 PAGES

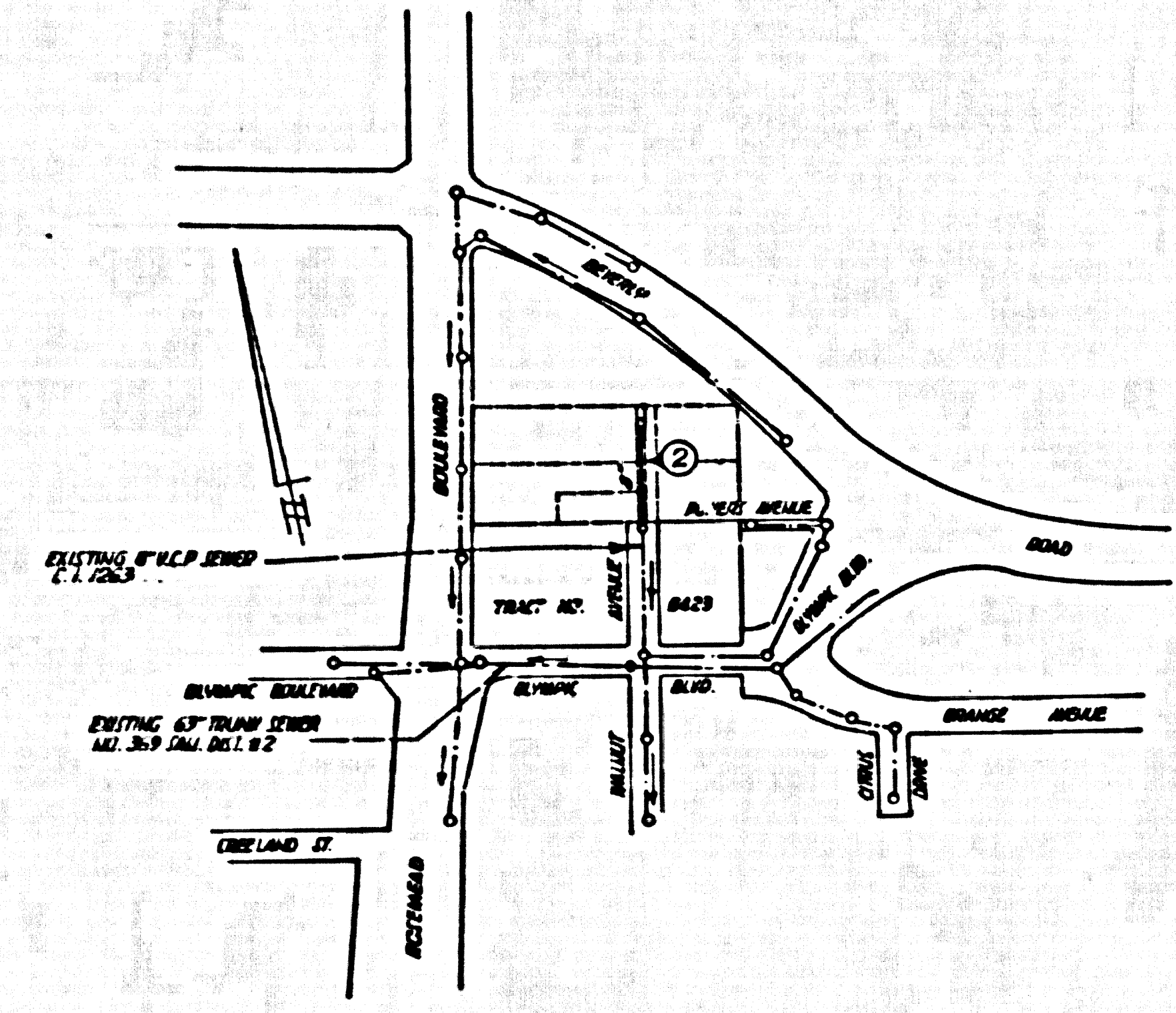
SCALE: HORIZ. 1" = 40' VERT. 1" = 4'
 PREPARED IN THE OFFICES OF

TECHNOLOGICAL ENGINEERING CORPORATION

By: *J.A. Patton*
 REG. C. E. NO. 10410

FOR LEGEND SEE PLAN NO. S-A-44

30193



INDEX MAP
 SCALE 1"=300'
 PC 5587

- NOTES:
1. PROVIDE STAKES ON THE PROPERTY LINE OR PROPERTY LINES PRODUCED AT RIGHT ANGLES TO THE SEWER LINE AT THE CENTER LINE OF EACH MANHOLE.
 2. NO REPRESENTATIVE OF THE CITY ENGINEER WILL SURVEY OR LAY OUT ANY PORTION OF THE WORK.
 3. THE OWNER OR HIS AUTHORIZED REPRESENTATIVE SHALL FURNISH THE CITY ENGINEER WITH BLADE SHEETS AND STATIONING FOR ALL HOUSE LATERALS AND Y BRANCHES AND SHALL PROVIDE STAKES FOR THEM AT THEIR PROPER LOCATIONS WITH STATIONING PLAINLY MARKED. ANY CHANGE IN LOCATION SHALL BE REQUESTED IN WRITING BY THE OWNER OR HIS REPRESENTATIVE.
 4. THE PRIVATE ENGINEER SHALL FURNISH THE HOUSE LATERAL DEPTH AT THE PROPERTY LINE BELOW THE TOP OF CURB ELEVATION FOR EACH HOUSE LATERAL ON THE GRADE SHEET.
 5. NO REVISIONS SHALL BE MADE IN THESE PLANS WITHOUT THE APPROVAL OF THE CITY ENGINEER.
 6. USE STANDARD MANHOLE FRAMES AND COVERS, S-117-4.
 7. USE STANDARD STRENGTH PIPE.
 8. USE CEMENT MORTAR OR "WEDGE-LOCK" OR "SPEED-SEAL" FOR ALL V.C.P. JOINTS PER SPEC'S, SECS. 16 & 18.
 9. RESURFACE ALL TRENCH WITHIN PAVED AREA TO MEET L.A. COUNTY ROAD DEPT. OR CALIF. STATE HIGHWAY REQUIREMENTS IN ACCORDANCE WITH PERMITS.
 10. ENCASE FOUR FEET OF SEWER AT POINTS OF INTERFERENCE WITH POLES, CASE 11, S-172.
 11. PROVIDE PROTECTIVE DEVICES AT ALL POINTS OF INTERFERENCE WITH POLES, CASE 11, S-172.
 12. ALL STRUCTURES SHALL BE BRICK SEWER STRUCTURES, S-104.
 13. FOR ALLOWABLE LEAKAGE TEST USE FORMULA NO. 1 SPEC'S, SEC. 34.
 14. MANHOLE TOPS IN UNIMPROVED RIGHTS-OF-WAY TO BE SIX INCHES ABOVE FINISHED GRADE.
 15. THE CONTRACTOR SHALL NOTIFY THE CONSTRUCTION DIVISION BY TELEPHONE, MADISON 9-4171, AT LEAST TWENTY-FOUR HOURS BEFORE STARTING ANY WORK UNDER THIS CONTRACT.
 16. STANDARD SPECIFICATIONS DATED OCTOBER 12, 1960, ON FILE WITH CITY ENGINEER, APPLY IN THE CONSTRUCTION OF THIS PROJECT.

B.M. "P-64" ELEV. 185.477 ± F.B. 126-45
 DIVISION ENGINEER'S MANHOLE
 4" IN. DIAMETER BE SAN. IN CURB 6" NORTH
 OF SOUTH END

NO CHARGE FOR CONNECTIONS
J.S. Hillman 11-17-60

NOTE:
 GRADES TO WHICH THIS IMPROVEMENT IS TO BE CONSTRUCTED ARE SHOWN ON PLANS AND PROFILES. GRADE POINTS FOR TOP OF CURBS, CENTER LINE OF STREETS OR CENTER LINE OF ALLEYS ARE SHOWN BY CIRCLES ON PROFILES. AT ALL POINTS BETWEEN DESIGNATED POINTS THE GRADE SHALL BE ESTABLISHED SO AS TO CONFORM TO A STRAIGHT LINE DRAWN BETWEEN SAID DESIGNATED POINTS.
 ELEVATIONS ARE IN FEET ABOVE U.S.C. & G.S. SEA LEVEL DATUM OF 1929.
 THIS DRAWING AND THE DATA HEREON ARE HEREBY MADE A PART OF THE SPECIFICATIONS.
 WORK SHALL BE CONSTRUCTED ACCORDING TO SPECIFICATIONS ON FILE IN THE OFFICE OF THE CITY ENGINEER AND SHALL BE PROSECUTED ONLY IN THE PRESENCE OF THE COUNTY ENGINEER.
 BEFORE WORK CAN BE STARTED THE CONTRACTOR MUST OBTAIN A PERMIT TO EXCAVATE IN CITY STREETS FROM THE L.A. COUNTY ROAD DEPT., DISTRICT OFFICE NO. 2, AND MAKE A DEPOSIT WITH THE CITY OF PICO RIVERA AND TO PAVEMENT DEPARTMENT SUFFICIENT TO COVER THE COST OF CONSTRUCTION INSPECTION AND RECORD PLANS.
 APPROVAL OF THIS PLAN BY THE DIVISION OF PICO RIVERA DOES NOT CONSTITUTE A REPRESENTATION AS TO THE ACCURACY OF THE LOCATION OR THE EXISTENCE OR NON-EXISTENCE OF ANY UNDERGROUND UTILITY PIPE, OR STRUCTURE WITHIN THE LIMITS OF THIS PROJECT. THIS NOTE APPLIES TO ALL PAGES.
 IF WORK IS TO BE DONE IN A STATE HIGHWAY, A PERMIT MUST BE OBTAINED FROM THE STATE OF CALIFORNIA, DIVISION OF HIGHWAYS, 126 SOUTH SPRING STREET.

CITY OF PICO RIVERA, CALIFORNIA

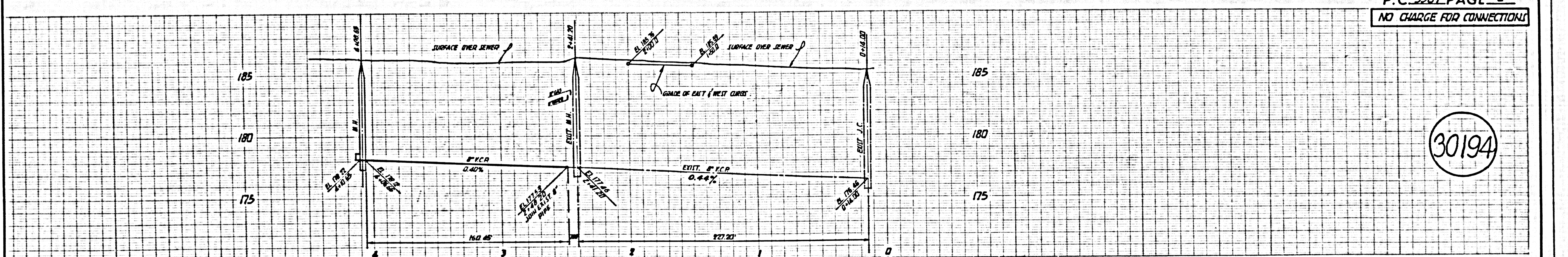
APPROVED, JOHN A. LAMBIE, CITY ENGINEER APPROVED, C.R. COMPTON, CHIEF ENGINEER

BY: *C.E. Priddy* BY: *J.A. Patton*
 CITY ENGINEER OFFICE ENGINEER

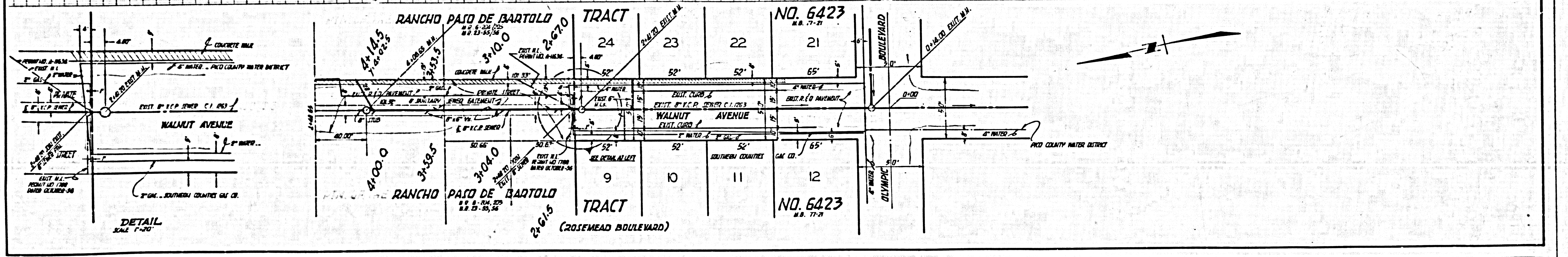
CHECKED BY: *J.K. Wain* 11-27-60
 OFFICE OF CITY ENGINEER, REG. C. E. NO. 2466

SUBMITTED BY: *John A. Patton* 11-21-60
 CITY ENGINEER, REG. C. E. NO. 3071

P.C. 5587, PAGE 2
 NO CHARGE FOR CONNECTIONS



30194



DETAIL
 SCALE 1"=20'