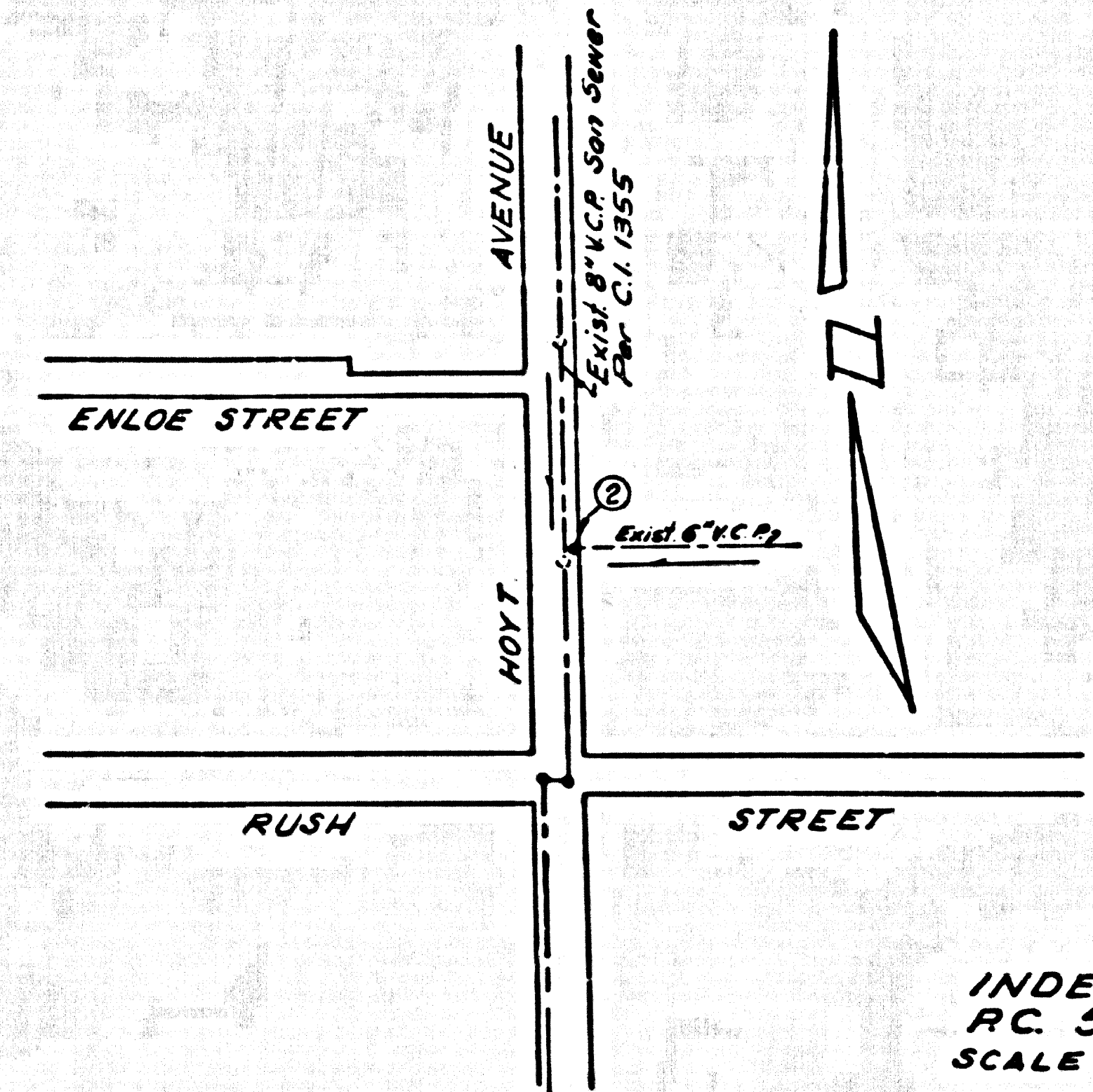


SOUTH EL MONTE BLDG. DIST. NO. 5.06

PROFILE ALIGNMENT AND GRADE OF **P.C. 5589**
SANITARY SEWERS PAGE 1

BENCH MARK Whittier Quad Elev. 249.254
 S.G. 1537 Adj. 1955
 L&T in N.W. edge of 4' concr. walk of Building
 = 75' S. 1/4 Rush Street ± 51' E. 1/4 Central Avenue



INDEX MAP
 P.C. 5589
 SCALE 1" = 300'

NO CHARGE FOR CONNECTIONS
A. J. Robertson

- NOTES:**
1. PROVIDE STAKES ON THE PROPERTY LINE OR PROPERTY LINES PRODUCED AT RIGHT ANGLES TO THE SEWER LINE AT THE CENTER LINE OF EACH MANHOLE.
 2. NO REPRESENTATIVE OF THE CITY ENGINEER WILL SURVEY OR LAY OUT ANY PORTION OF THE WORK.
 3. THE OWNER OR HIS AUTHORIZED REPRESENTATIVE SHALL FURNISH THE CITY ENGINEER WITH GRADE SHEETS AND STATIONING FOR ALL HOUSE LATERALS AND Y BRANCHES AND SHALL PROVIDE STAKES FOR THEM AT THEIR PROPER LOCATIONS WITH STATIONING PLAINLY MARKED. ANY CHANGE IN LOCATION SHALL BE REQUESTED IN WRITING BY THE OWNER OR HIS REPRESENTATIVE.
 4. NO REVISIONS SHALL BE MADE IN THESE PLANS WITHOUT THE APPROVAL OF THE CITY ENGINEER.
 5. USE STANDARD MANHOLE FRAMES AND COVERS, 2-111, COVER TO READ "SEWER".
 6. USE STANDARD STRENGTH PIPE.
 7. USE CEMENT MORTAR OR "WEDGE-LOCK" OR "SPREAD-SEAL" FOR ALL V.C.P. JOINTS PER SPEC'S, U.C.L. 11 & 12.
 8. ALL STRUCTURES SHALL BE BRICK SEWER STRUCTURES, 2-104, EXCEPT AS NOTED.
 9. FOR ALLOWABLE LEAKAGE TEST USE FORMULA NO. 1, SPEC'S, SEC. 84.
 10. MANHOLE TOPS IN UNIMPROVED RIGHTS-OF-WAY TO BE SIX INCHES ABOVE FINISHED GRADE.
 11. THE CONTRACTOR SHALL NOTIFY THE "CONSTRUCTION" DIVISION BY TELEPHONE, MADISON 3-4171, EXT. 8551 AT LEAST TWENTY-FOUR HOURS BEFORE STARTING ANY WORK UNDER THIS CONTRACT.
 12. STANDARD SPECIFICATIONS DATED JAN. 1, 1960 APPLY IN THE CONSTRUCTION OF THIS PROJECT.

TO BE CONSTRUCTED IN
HOYT AVENUE
(PRIVATE SEWER)

PRIVATE CONTRACT NO. 5589

W.S. 37 B-1
 1 SHEETS; 2 PAGES

SCALE: HORIZ. 1" = 40' VERT. 1" = 4'
 PREPARED IN THE OFFICES OF
ADAMS AND ELLS
 CIVIL ENGINEERS

By: *John R. Hamilton*
 REG. C. E. NO. 4849

29,469

FOR LEGEND SEE PLAN NO. S-A-24

NOTE:
 GRADES TO WHICH THIS IMPROVEMENT IS TO BE CONSTRUCTED ARE SHOWN ON PLANS AND PROFILES. GRADE POINTS FOR TOP OF CURBS, CENTER LINE OF STREETS, OR CENTER LINE OF ALLEYS ARE SHOWN BY CIRCLES ON PROFILES AT ALL POINTS BETWEEN DESIGNATED POINTS THE GRADE SHALL BE ESTABLISHED SO AS TO CONFORM TO A STRAIGHT LINE BEYOND ELEVATIONS ARE IN FEET ABOVE U.S.C. & G.S. SEA LEVEL DATUM OF 1929.
 THIS DRAWING AND THE DATA HEREON ARE HEREBY MADE A PART OF THE SPECIFICATIONS.
 BEFORE WORK CAN BE STARTED THE CONTRACTOR MUST OBTAIN A PERMIT TO EXCAVATE IN CITY STREETS FROM THE L. A. COUNTY ROAD DEPT., DISTRICT OFFICE NO. 1, AND MAKE A DEPOSIT WITH THE CITY ENGINEER ROOM 324 PAN AMERICAN BUILDING, 233 SO. BROADWAY SUFFICIENT TO COVER THE COST OF CONSTRUCTION INSPECTION AND RECORD PLANS.
 APPROVAL OF THIS PLAN BY THE CITY OF SOUTH EL MONTE DOES NOT CONSTITUTE A REPRESENTATION AS TO THE ACCURACY OF THE LOCATION OR OF THE EXISTENCE OR NON-EXISTENCE OF ANY UNDERGROUND UTILITY PIPE, OR STRUCTURE WITHIN THE LIMITS OF THIS PROJECT. THIS NOTE APPLIES TO ALL PAGES.
 IF WORK IS TO BE DONE IN A STATE HIGHWAY, A PERMIT MUST BE OBTAINED FROM THE STATE OF CALIFORNIA, DIVISION OF HIGHWAYS, 120 1/2 NORTH SPRING STREET.

CITY OF SOUTH EL MONTE, CALIFORNIA

APPROVED, JOHN A. LAMBIE, CITY ENGINEER APPROVED, C.R. COMPTON, CHIEF ENGINEER
 CO. SAN. DIST. NO. 15

By: *J.E. Brown* By: *E.H. Brown*
 DIST. SANITATION ENGINEER DIST. OFFICE ENGINEER

CHECKED BY: *A.K. Onda* 6-30-60
 OFFICE OF COUNTY ENGINEER, REG. C. E. NO. 2436

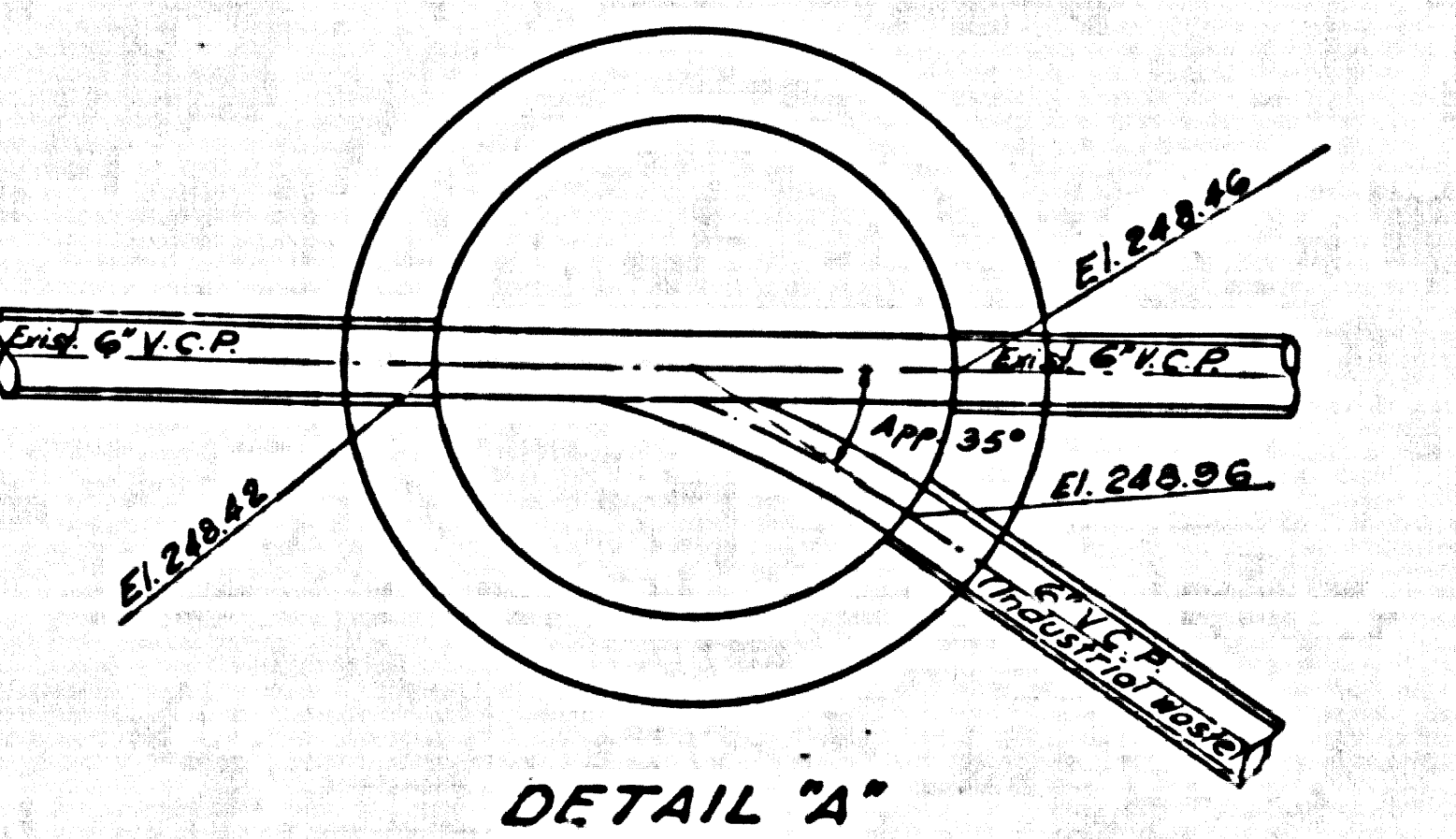
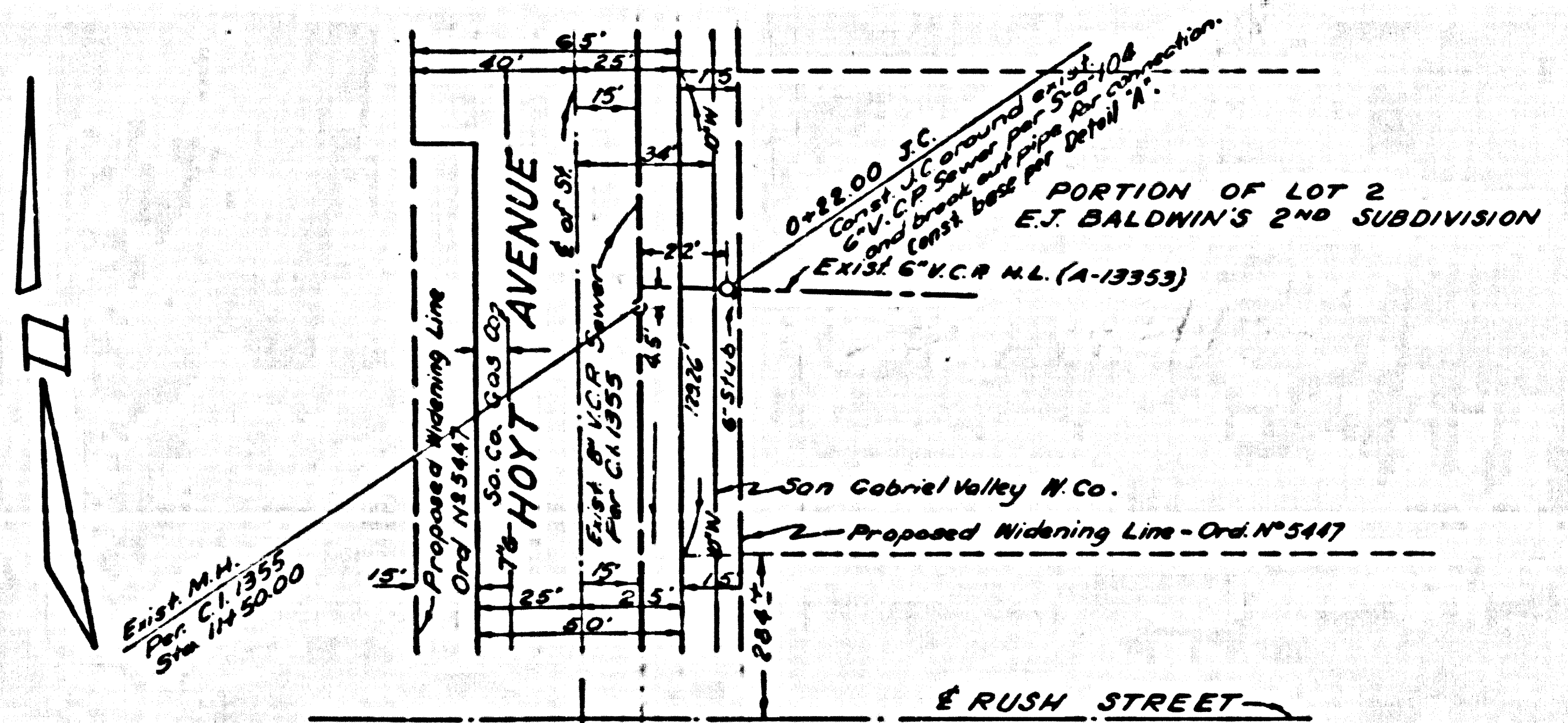
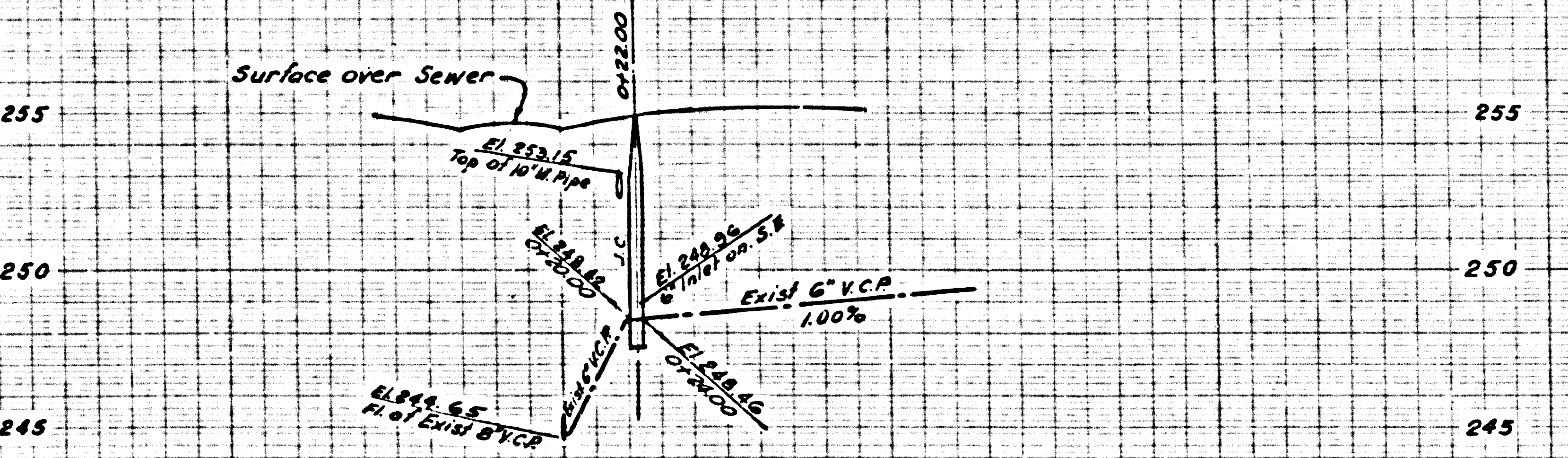
APPROVED BY *James H. Stewart* DATE 4/29/60
 INDUSTRIAL WASTE DIVISION

SUBMITTED BY *N.F. Brown*
 SAN GABRIEL VALLEY REGIONAL ENGINEER

P.C. 5589 PAGE 2

NO CHARGE FOR CONNECTIONS

29,470



DETAIL "A"