

INDEX MAP
Scale: 1" = 600'
Tract No. 26387 and Tract No. 25911
P.C. 5591
Numbers in Circles denote Page Numbers

B.M. No. 11-121 Elev. 338.928 C.S.F.B. 1376 Pg. 108
Workman Mill Rd and Lomitas Ave.
A std. County Surv. Mon. in a Well marked B.M. 11-121 E.E. 63
11' So. of the E. Workman Mill Rd and 5' W. of E. Lomitas Ave.

NO CHARGE FOR CONNECTIONS

- REVISION
- 1 - Add H.L. at Sta. 1195 on Pg. 5 & aband. H.L. at Sta. 1190 Pg. 3.
 - 2 - Revised curb on pages 2, 3 & 4.
 - 3 - Revised chimney at Sta. 733 page 4.
 - 4 - Added H.L. at Sta. 806 & 900 pg. 4, Sta. 1300 pg. 7.
 - 5 - 6" V.C.P. moved to 608.15 and relocated main line sewer 7' south of centerline between Sta. 2045.56 & 1214.75, Page 12.
 - 6 - Revised 8" sewer outlet from Sta. 1033.91 to 408.10 B.M. D.
- APPROVED: *[Signature]* DATE: 6-9-63
OFFICE OF COUNTY ENGINEER

PUEENTE BLDG. DIST. NO. 2

- NOTES:
1. PROVIDE STAKES ON THE PROPERTY LINE OR PROPERTY LEVEL PRODUCED AT FINISHED ANGLES TO THE SEWER LINE AT THE CENTER LINE OF EACH MANHOLE.
 2. NO REPRESENTATIVE OF THE COUNTY ENGINEER WILL SURVEY OR LAY OUT ANY PORTION OF THE WORK.
 3. THE OWNER OR HIS AUTHORIZED REPRESENTATIVE SHALL FURNISH THE COUNTY ENGINEER WITH GRADE SHEETS AND STATIONING FOR ALL HOUSE LATERALS AND Y BRANCHES AND SHALL PROVIDE STAKES FOR THEM AT THEIR PROPER LOCATIONS WITH STATIONING PLAINLY MARKED. ANY CHANGE IN LOCATION SHALL BE REQUESTED IN WRITING BY THE OWNER OR HIS REPRESENTATIVE.
 4. THE PRIVATE ENGINEER SHALL FURNISH THE HOUSE LATERAL DEPTH AT THE PROPERTY LINE BELOW THE TOP OF CURB ELEVATION FOR EACH HOUSE LATERAL ON THE GRADE SHEET.
 5. NO REVISIONS SHALL BE MADE IN THESE PLANS WITHOUT THE APPROVAL OF THE COUNTY ENGINEER.
 6. USE STANDARD MANHOLE FRAMES AND COVERS, S-117.
 7. USE 8" X 24" STRENGTH PIPE, ALL PIPE STANDARD DEPTH EXCEPT AS NOTED.
 8. USE CEMENT MORTAR OR MECHANICAL COMPRESSION JOINTS FOR ALL V.C.P. IN MAIN LINE JOINTS PER SPECS. SEC. 30 & 40 AS NOTED IN PROFILE DRAWING 2 & 3 & 4.
 9. RESURFACE ALL OPEN CUTS WITH ROAD OR CALIF. STATE HIGHWAY REQUIREMENTS IN ACCORDANCE WITH PERMITS.
 10. ENCASE FOUR FEET OF SEWER AT POINTS OF INTERFERENCE WITH POLES, CASE III, S-172.
 11. HOUSE LATERALS TO BE CONSTRUCTED WITH INFERTS AT PROPERTY LINE 6" FEET BELOW CURB GRADE EXCEPT AS NOTED.
 12. MANHOLES SHALL BE REINFORCED WITH 3" X 4" OR 4" X 4" DIRECT CONCRETE APPROVED BY THE COUNTY ENGINEER FOR ALLOWABLE LEAKAGE TEST USE FORMULA NO. 1 SPECS. SEC. 34.
 13. MANHOLE TOPS IN UNIMPROVED RIGHTS-OF-WAY TO BE LEVEL WITH FINISHED GRADE, EXCEPT AS NOTED.
 14. THE CONTRACTOR SHALL NOTIFY THE CONSTRUCTION DIVISION BY TELEPHONE, MADISON 5-414, AT LEAST TWENTY-FOUR HOURS BEFORE STARTING ANY WORK UNDER THIS CONTRACT.
 15. STANDARD SPECIFICATIONS DATED MAY 25 1962 APPLY IN THE CONSTRUCTION OF THIS PROJECT.
 16. USE MECHANICAL COMPRESSION JOINTS FOR ALL V.C.P. HOUSE LATERALS PER SPECS SEC. 30, 36, AND 49.
 17. USE MECHANICAL COMPRESSION JOINTS FOR ALL V.C.P. IN MAIN LINE PER SPECS. SEC. 30 & 40 AS NOTED IN PROFILE DRAWING 2 & 3 & 4.
 18. ALL STATE AND LOCAL TRENCH SAFETY ORDERS WILL BE RIGIDLY ENFORCED.

NO CONNECTIONS FOR THE DISPOSAL OF INDUSTRIAL WASTES SHALL BE MADE TO SEWERS SHOWN ON THESE DRAWINGS WITHOUT WRITTEN PERMISSION FROM THE CHIEF ENGINEER AND GENERAL MANAGER OF THE COUNTY SANITATION DISTRICTS.

NO STRUCTURE BREAKING INTO ANY EXISTING STRUCTURE AND NO BEFORE FINAL ACCEPTANCE OF THIS WORK. COUNTY SANITATION DISTRICT (DU 4-1281) SHALL BE NOTIFIED IN ORDER THAT REQUIRED INSPECTION CAN BE MADE.

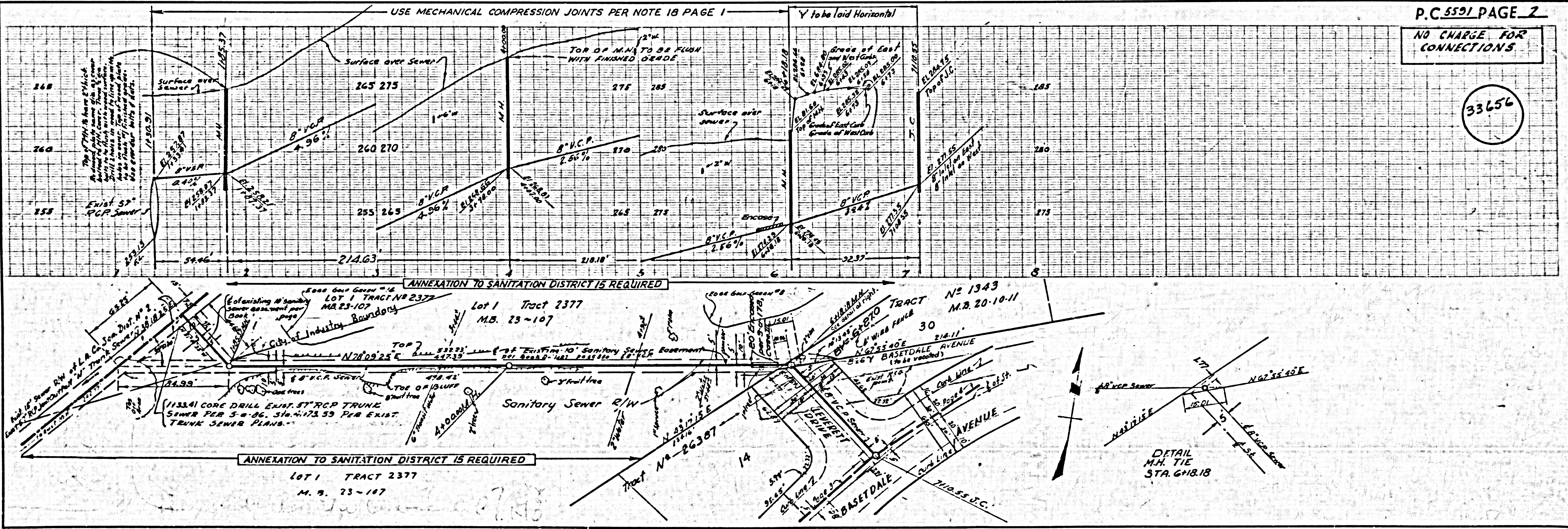
COUNTY SANITATION DISTRICT NO. 15
REVISION APPROVAL
BY: *[Signature]*
OFFICE ENGINEER

PROFILE ALIGNMENT AND GRADE OF P.C. 5591
SANITARY SEWERS PAGE 1
TO BE CONSTRUCTED IN J.N. 0353.57
TRACT 26387 and TRACT 25911

PRIVATE CONTRACT NO. 5591
W.S. 37
7 SHEETS; 14 PAGES
SCALE: VERT. 1" = 4' HORIZ. 1" = 40'
FEBRUARY, 1962
PREPARED IN THE OFFICES OF
HILLCREST ENGINEERING CORP.
BY: *[Signature]* REVISION: 2-8-63 K.T.
KAREL TONGLET REG. C. E. NO. 1832
FOR LEGEND SEE PLAN NO. S-A-64

NOTE:
GRADES TO WHICH THE IMPROVEMENT IS TO BE CONSTRUCTED ARE SHOWN ON PLANS AND PROFILES. GRADE POINTS FOR TOP OF CURB, CENTER LINE OF STREETS, OR CENTER LINE OF ALLEYS ARE SHOWN BY CIRCLES ON PROFILES. AT ALL POINTS BETWEEN DESIGNATED POINTS THE GRADE SHALL BE ESTABLISHED SO AS TO CONFORM TO A STRAIGHT LINE DRAWN BETWEEN DESIGNATED POINTS.
ELEVATIONS ARE IN FEET ABOVE U.S.C. & G.S. SEA LEVEL DATUM OF 1929.
THIS DRAWING AND THE DATA HEREON ARE HEREBY MADE A PART OF THE SPECIFICATIONS.
WORK SHALL BE CONSTRUCTED ACCORDING TO SPECIFICATIONS ON FILE IN THE OFFICE OF THE COUNTY ENGINEER AND SHALL BE PROSECUTED ONLY IN THE PRESENCE OF THE COUNTY ENGINEER.
BEFORE WORK CAN BE STARTED THE CONTRACTOR MUST OBTAIN A PERMIT TO EXCAVATE IN COUNTY STREETS FROM THE L.A. COUNTY ROAD DIST. DISTRICT ENGINEER AND PAY TO THE COUNTY ENGINEER ROOM 510 COUNTY ENGINEERING BLDG. 108 W. 7th ST. LOS ANGELES, CALIF. A SUFFICIENT TO COVER THE COST OF CONSTRUCTION INSPECTION AND RECORD PLANS.
APPROVAL OF THIS PLAN BY THE COUNTY OF LOS ANGELES DOES NOT CONSTITUTE A REPRESENTATION AS TO THE ACCURACY OF THE LOCATION OF OR THE EXISTENCE OR NON-EXISTENCE OF ANY UNDERGROUND UTILITY PIPE, OR STRUCTURE WITHIN THE LIMITS OF THE PROJECT. THIS NOTE APPLIES TO ALL PAGES.
IF WORK IS TO BE DONE IN A STATE HIGHWAY, A PERMIT MUST BE OBTAINED FROM THE STATE OF CALIFORNIA, DIVISION OF HIGHWAYS, 128 SOUTH SPRING STREET.

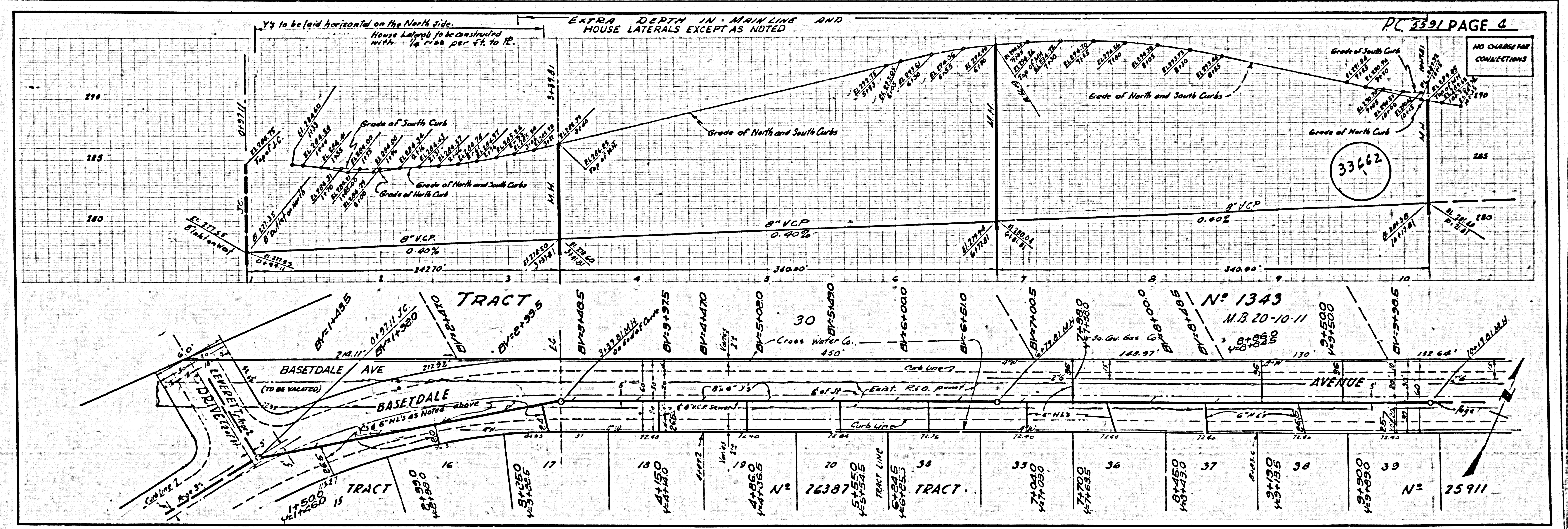
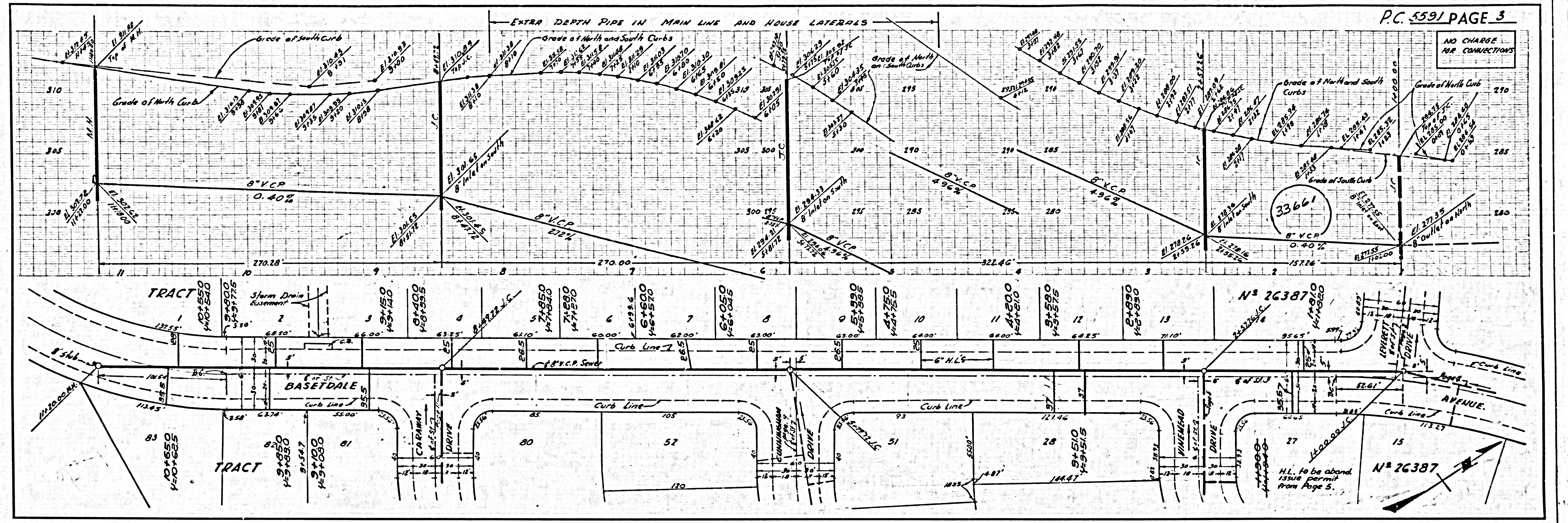
COUNTY OF LOS ANGELES, CALIFORNIA
APPROVED, JOHN A. LAMBE, COUNTY ENGINEER APPROVED, *[Signature]* CHIEF ENGINEER
BY: *[Signature]* ASST. SANITATION ENGINEER BY: *[Signature]* OFFICE ENGINEER
CHECKED BY: *[Signature]* 10-4-62
OFFICE OF COUNTY ENGINEER, REG. C. E. NO. 3616
SUBMITTED: *[Signature]* 9-28-62
SAN. DIMAS REGIONAL ENGINEER



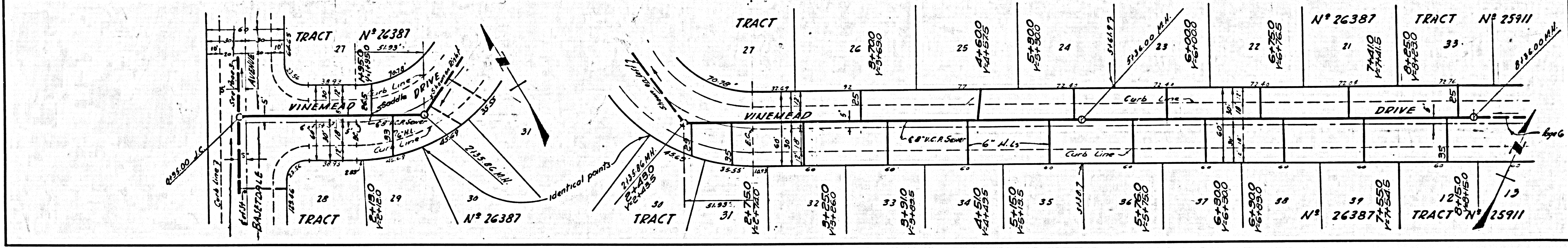
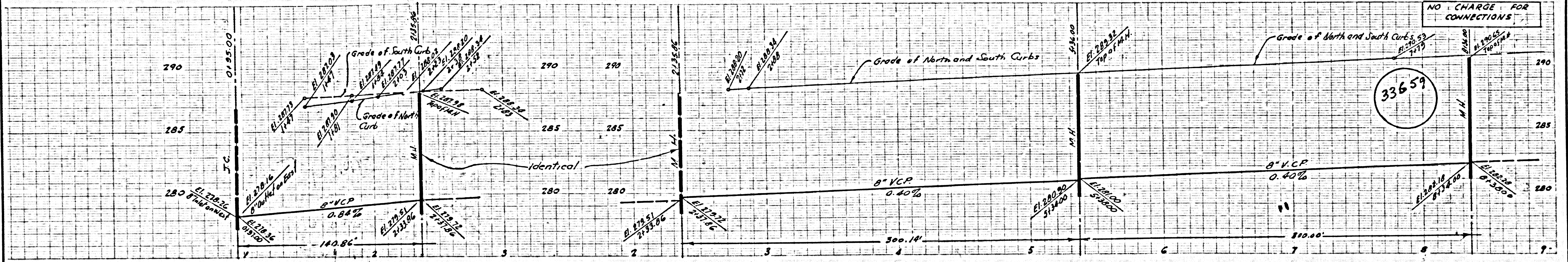
P.C. 5591 PAGE 2
NO CHARGE FOR CONNECTIONS

33656

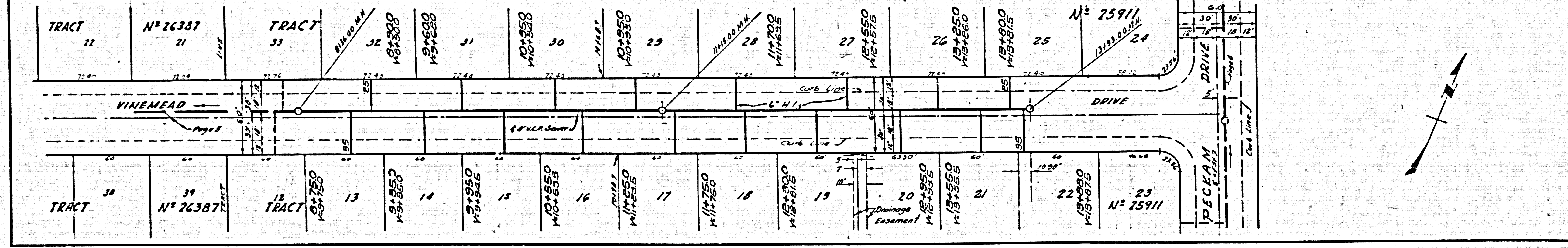
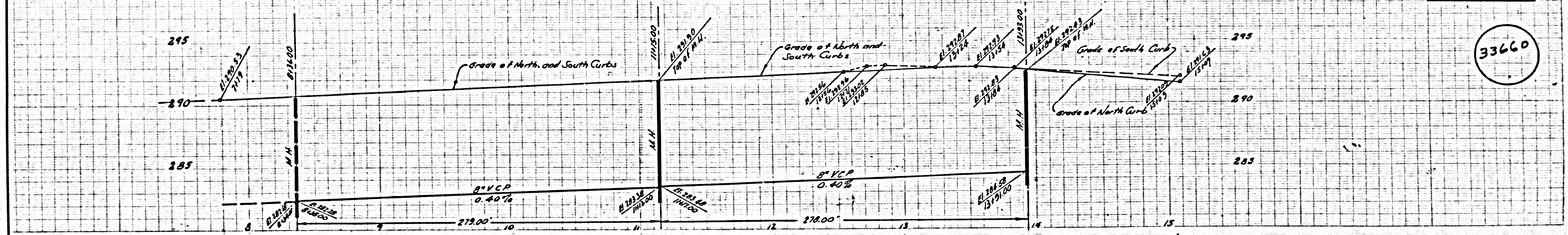
DETAIL
M.H. TIE
STA. 648.18



NO CHARGE FOR CONNECTIONS

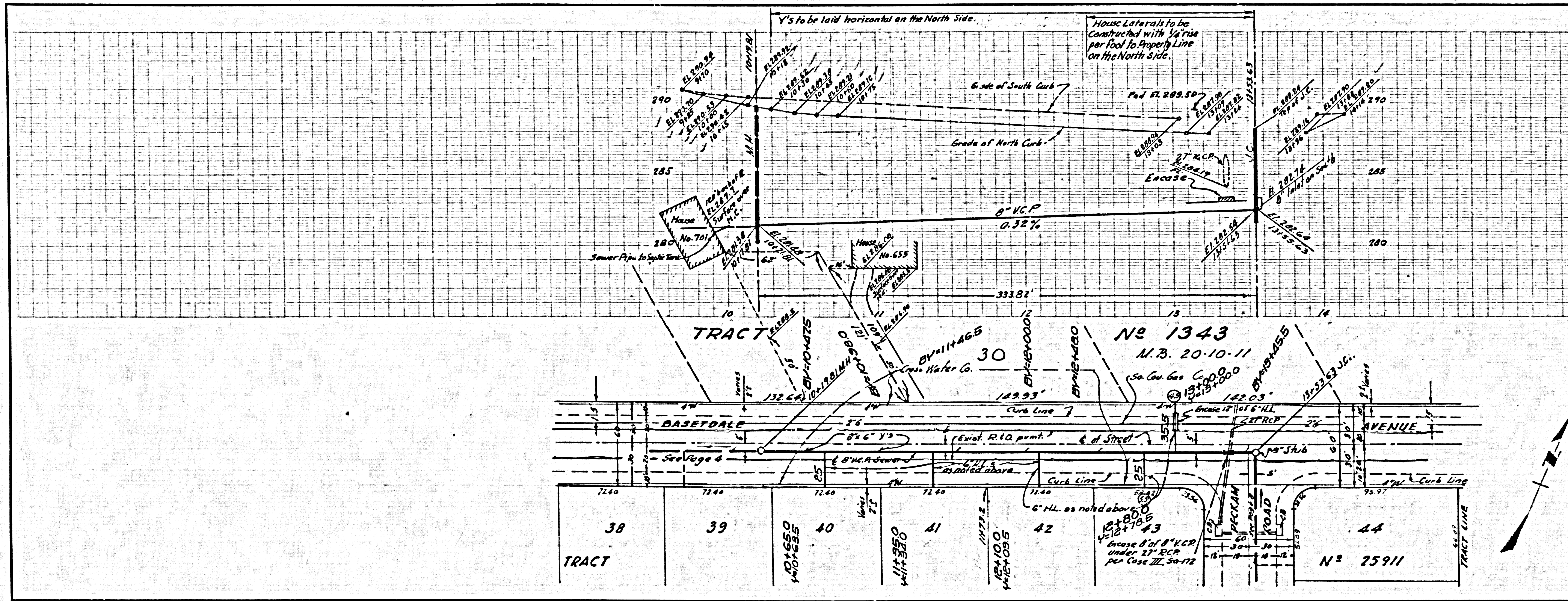


NO CHARGE FOR CONNECTIONS



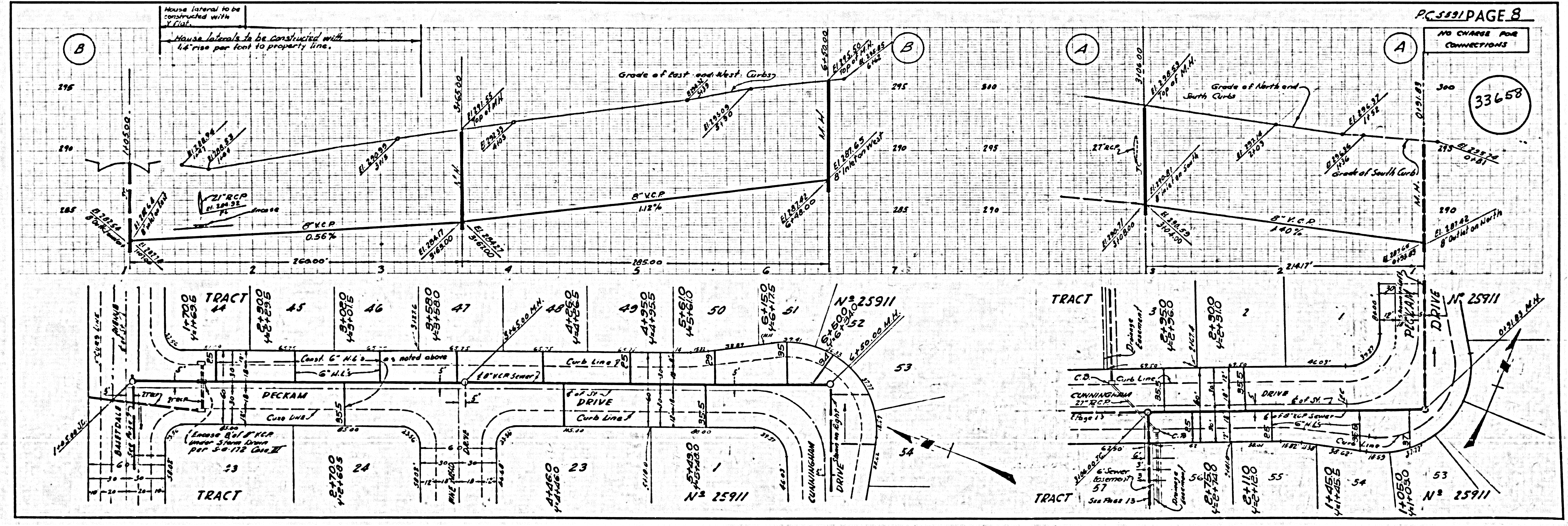
NO CHARGE FOR CONNECTIONS

33657



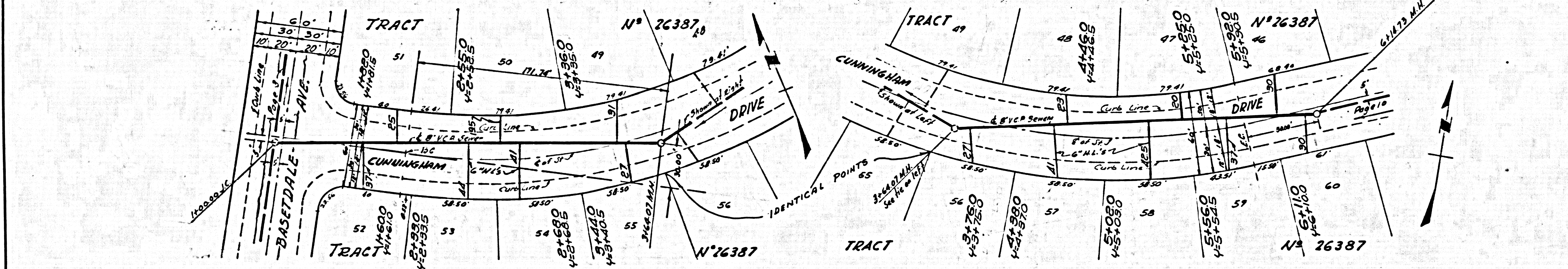
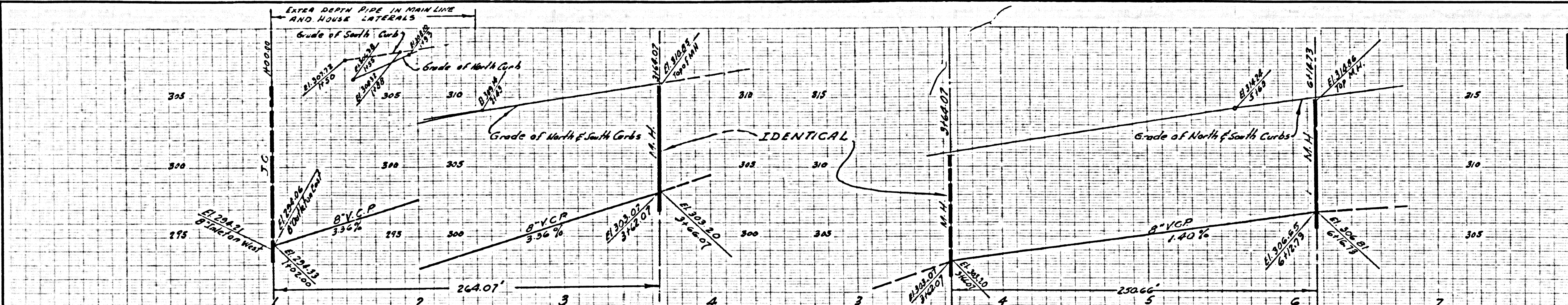
NO CHARGE FOR CONNECTIONS

33658



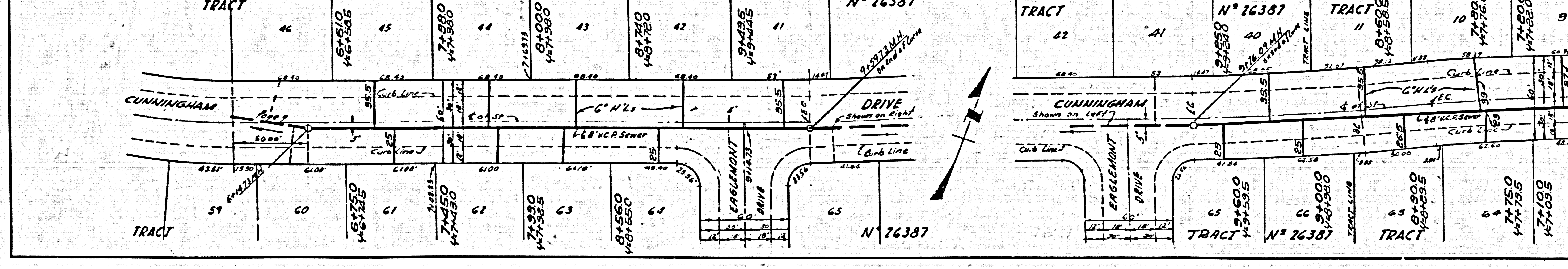
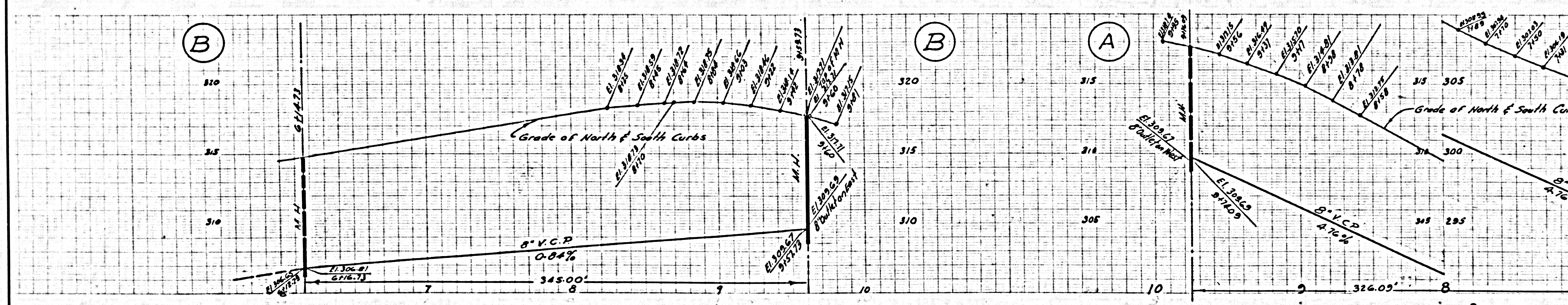
NO CHARGE FOR CONNECTIONS

3363



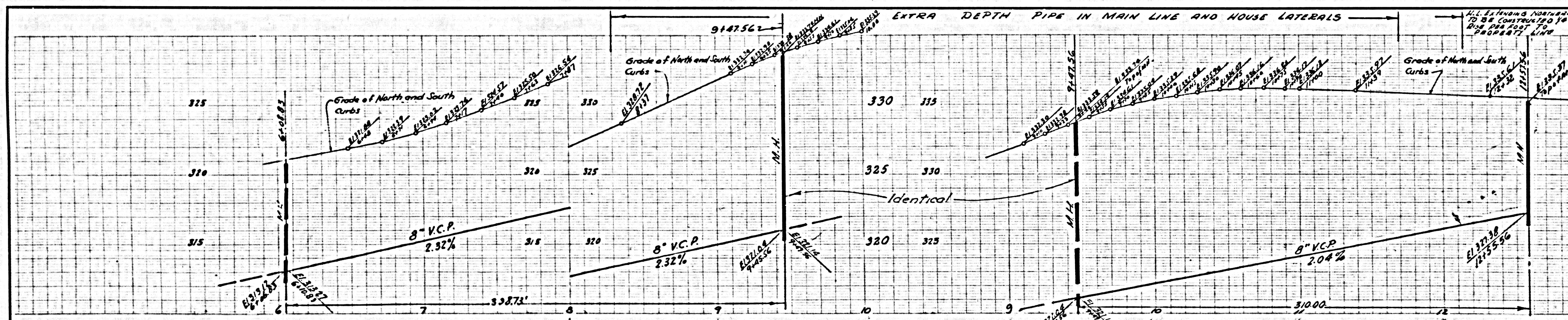
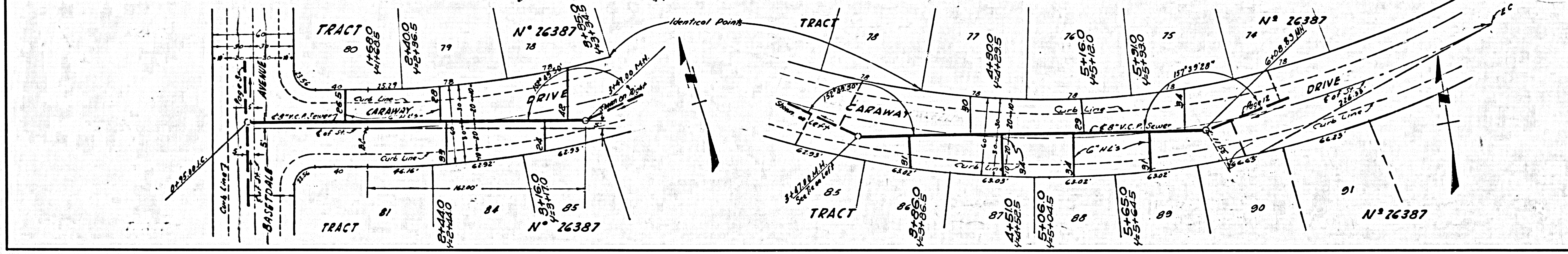
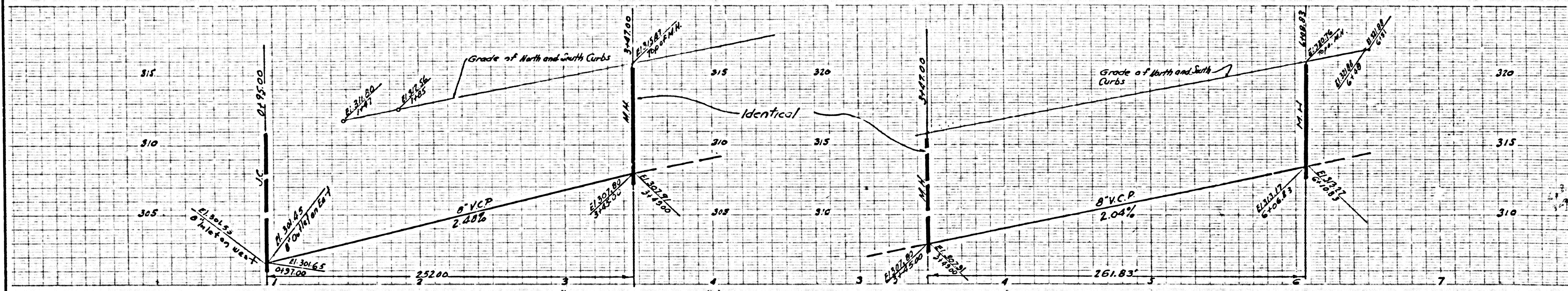
NO CHARGE FOR CONNECTIONS

3364



NO CHARGE FOR CONNECTION

33665



NO CHARGE FOR CONNECTIONS

33666

