

BENCH MARK
 L.A. County Sur. Mon. 8-23 near
 the int. Alhambra Blvd & Fullerton
 Rd. 128' W/O R. Norwalk Blvd 1.25'
 S/O E Fullerton Rd. 3rd L.A. County
 Central Dist.
 E.B. 1209, Pg. 22 Elev. 25.325 (1962 Ad.)

LAKWOOD BLDG. DIST. NO. 4.3

PROFILE ALIGNMENT AND GRADE OF P.C. 5593
SANITARY SEWERS PAGE 1
 TO BE CONSTRUCTED IN JN 0353.99

TRACT NO. 24709

PRIVATE CONTRACT NO. 5593

W.S. 31
 8 SHEETS: 15 PAGES

SCALE: VERT. 1" = 4' JUNE, 1960

PREPARED IN THE OFFICES OF
 VORONETS - TRINCLE CO.
 5919 VAN NUYS BLVD., VAN NUYS, CALIF.
 ST. 1-1520 TR. 3-4410

BY: *C.R. Nelson*
 REG. C. E. NO. 8781

FOR LEGEND SEE PLAN NO. S-A-64

NOTE:
 GRADES TO WHICH THIS INSTRUMENT IS TO BE CONSTRUCTED ARE SHOWN ON PLANS AND PROFILE GRADE POINTS
 FOR TOP OF CURBS, CENTER LINE OF STREETS OR CENTER LINE OF ALLEYS ARE SHOWN BY CIRCLES ON PROFILES AT ALL
 POINTS BETWEEN DESIGNATED POINTS THE GRADE SHALL BE ESTABLISHED SO AS TO CONFORM TO A STRAIGHT LINE DRAWN
 BETWEEN SAID DESIGNATED POINTS.
 ELEVATIONS ARE IN FEET ABOVE U.S.C. & G.S. SEA LEVEL DATUM OF 1929.
 THIS DRAWING AND THE DATA HEREON ARE HEREBY MADE A PART OF THE SPECIFICATIONS.
 WORK SHALL BE CONSTRUCTED ACCORDING TO SPECIFICATIONS ON FILE IN THE OFFICE OF THE COUNTY ENGINEER
 AND SHALL BE PROSECUTED ONLY IN THE PRESENCE OF THE COUNTY ENGINEER.
 BEFORE WORK CAN BE STARTED, THE CONTRACTOR MUST OBTAIN A PERMIT TO EXCAVATE IN COUNTY STREETS FROM
 THE L.A. COUNTY ROAD DEPT., DISTRICT OFFICE NO. 8 AND PAY THE FEE WITHIN THE COUNTY ENGINEER'S ROOM
 150 FAN AMERICAN BUILDING, 251 SO. BROADWAY SUFFICIENT TO COVER THE COST OF CONSTRUCTION INSPECTION AND
 RECORD PLANS.
 APPROVAL OF THIS PLAN BY THE COUNTY OF LOS ANGELES DOES NOT CONSTITUTE A REPRESENTATION AS TO THE
 ACCURACY OF THE LOCATION OF OR THE EXISTENCE OR NON-EXISTENCE OF ANY UNDERGROUND UTILITY PIPE, OR STRUCTURE
 WITHIN THE LIMITS OF THIS PROJECT. THIS NOTE APPLIES TO ALL PAGES.
 IF WORK IS TO BE DONE IN A STATE HIGHWAY, A PERMIT MUST BE OBTAINED FROM THE STATE OF CALIFORNIA, DIVISION
 OF HIGHWAYS, 126 SOUTH BRINK ST.

COUNTY OF LOS ANGELES, CALIFORNIA

APPROVED, JOHN A. LAMBIE, COUNTY ENGINEER APPROVED, C.R. COMPTON, CHIEF ENGINEER

BY: *C.E. [Signature]* 257, SANITATION ENGINEER BY: *[Signature]* CHIEF ENGINEER

CHECKED BY: *SK Oude* 7-24-60

OFFICE OF COUNTY ENGINEER, R.O. & E. NO. 3486

SUBMITTED BY: *John Z. Elyon* 7-27-60

LOS ANGELES BEAUFORT OFFICE, R.E. 5871

John McWilliam Aug. 1, 1960

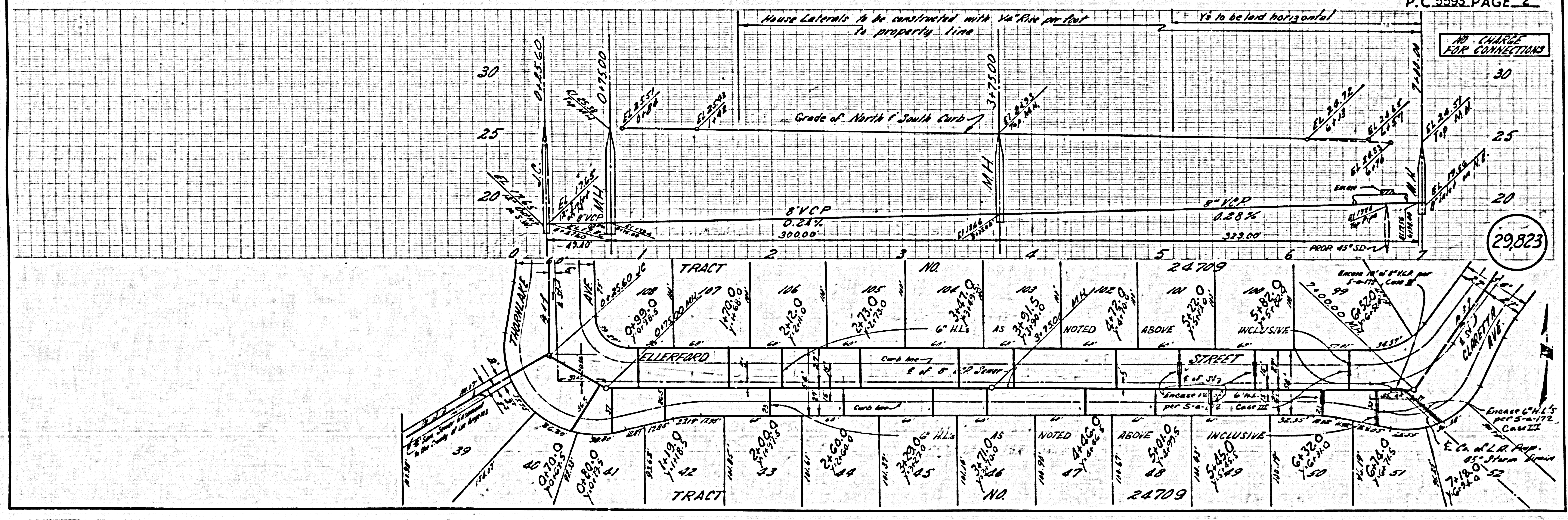
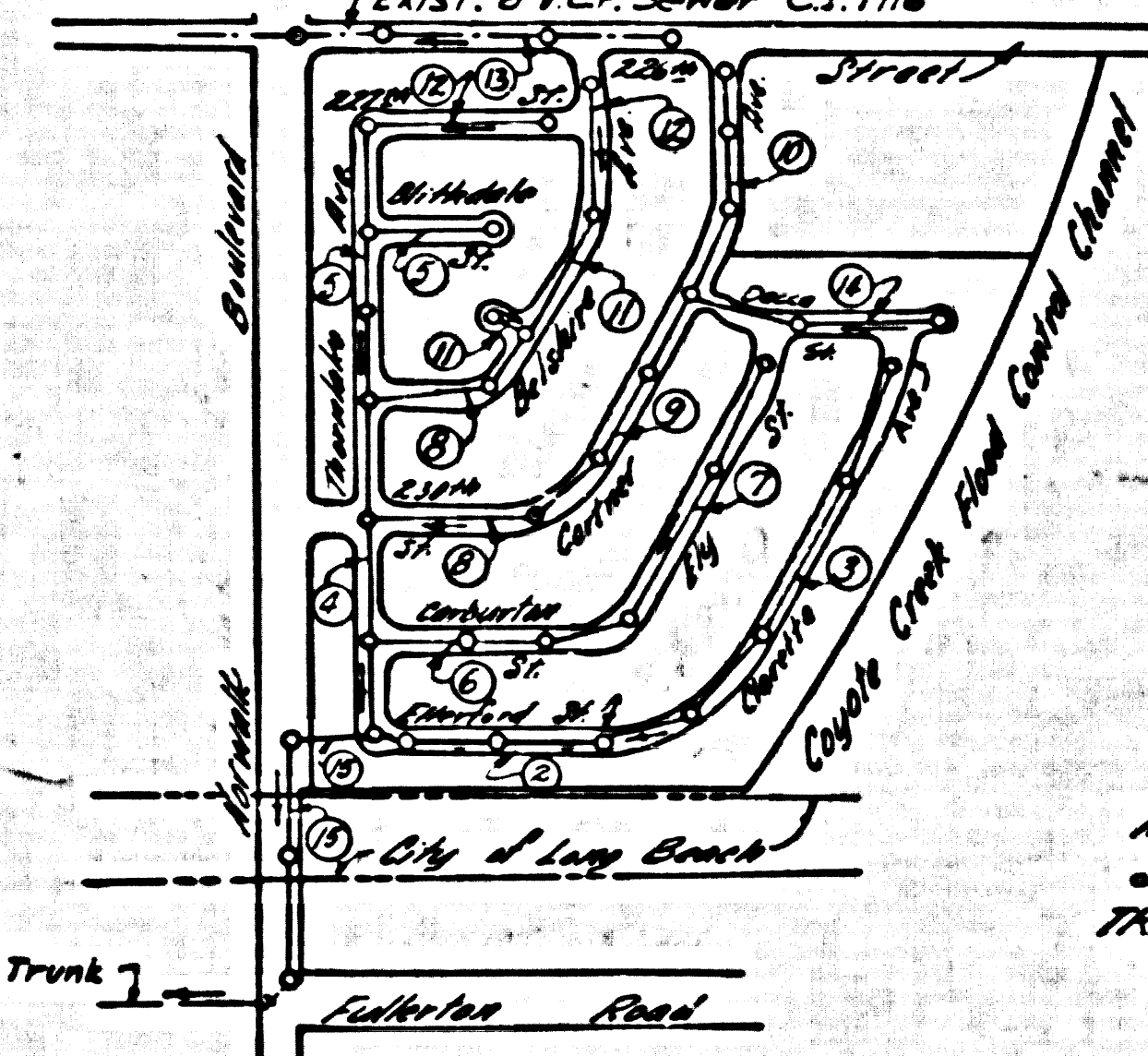
City Engineer, City of Long Beach, Calif. C.E. 3111

REVISION:
 PAGE 2 STA. 9175 TO STA. 7100 PAGE 15A
 RELOCATE GEWED. 3' EASTWARDLY.
John Z. Elyon 7-27-60
 LOS ANGELES REGIONAL ENGINEER, R.E. 3871

CONNECTION CHARGES
 AS INDICATED
 ALL UNDER 5-22-60

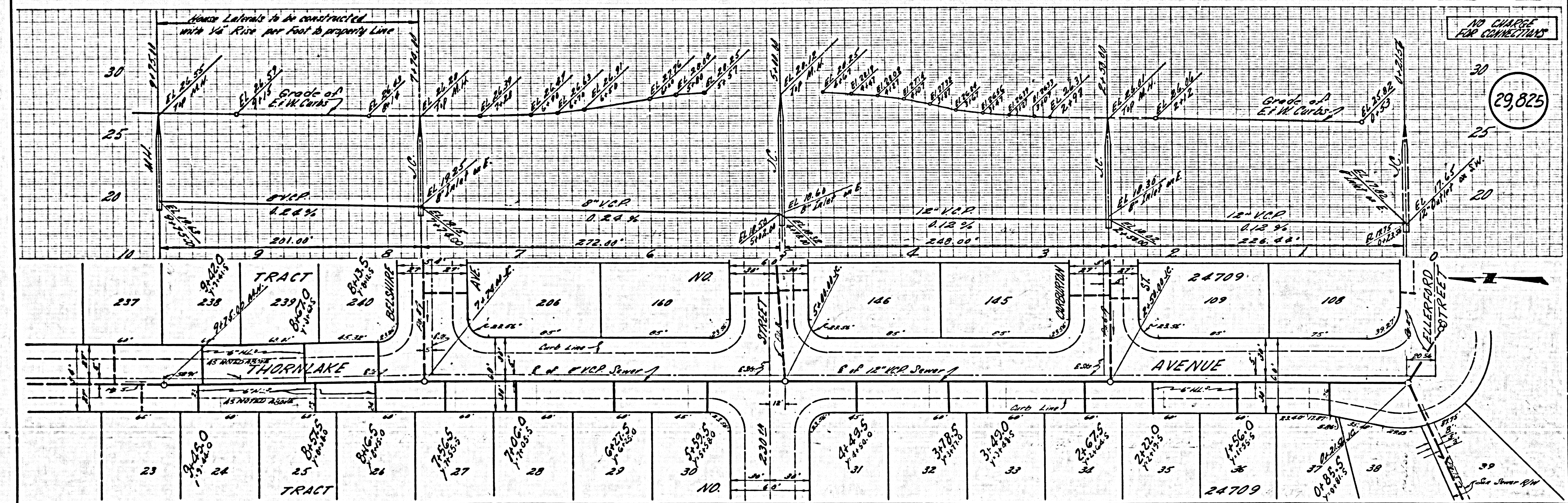
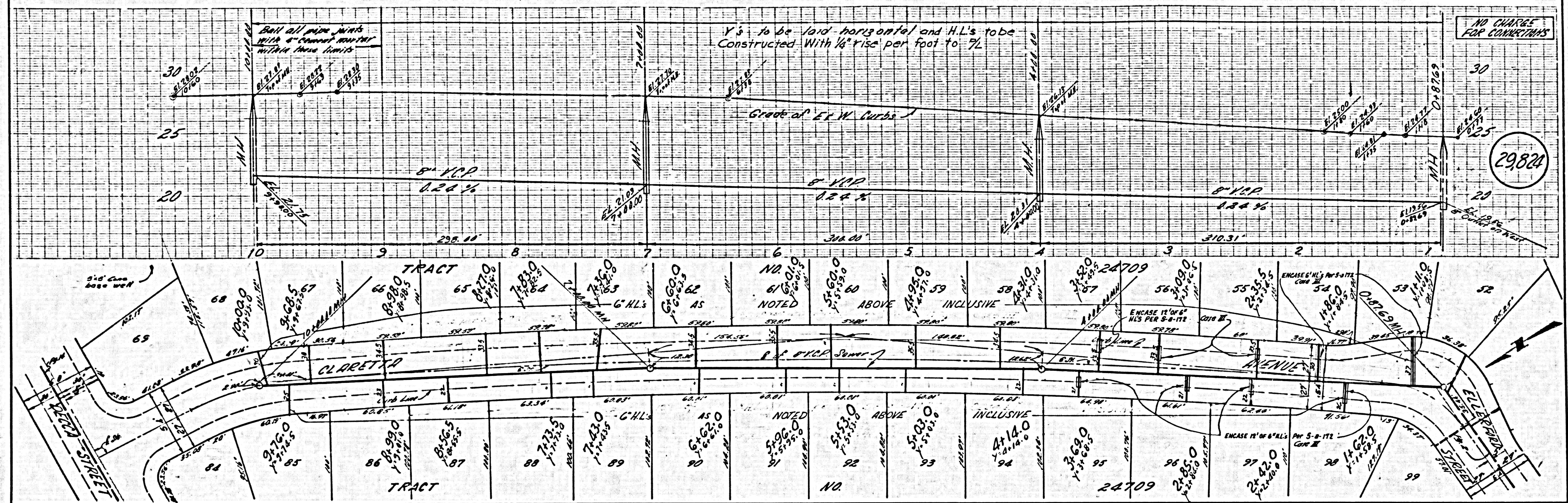
ISSUE NO PERMITS UNTIL
 OUTLET IS CONSTRUCTED

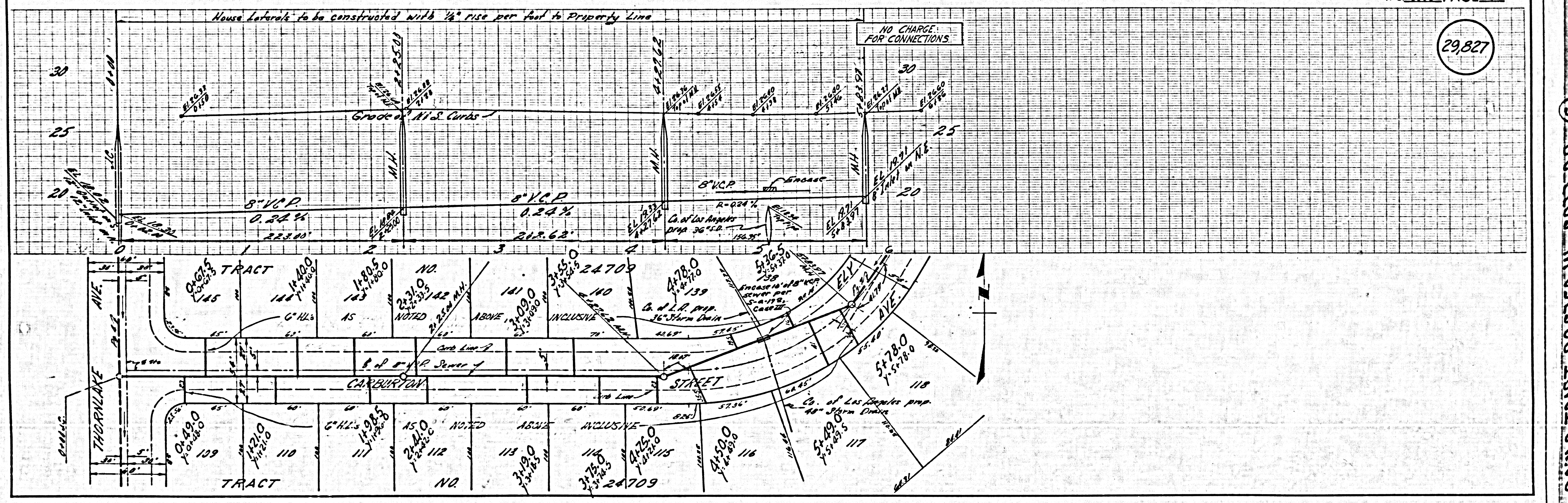
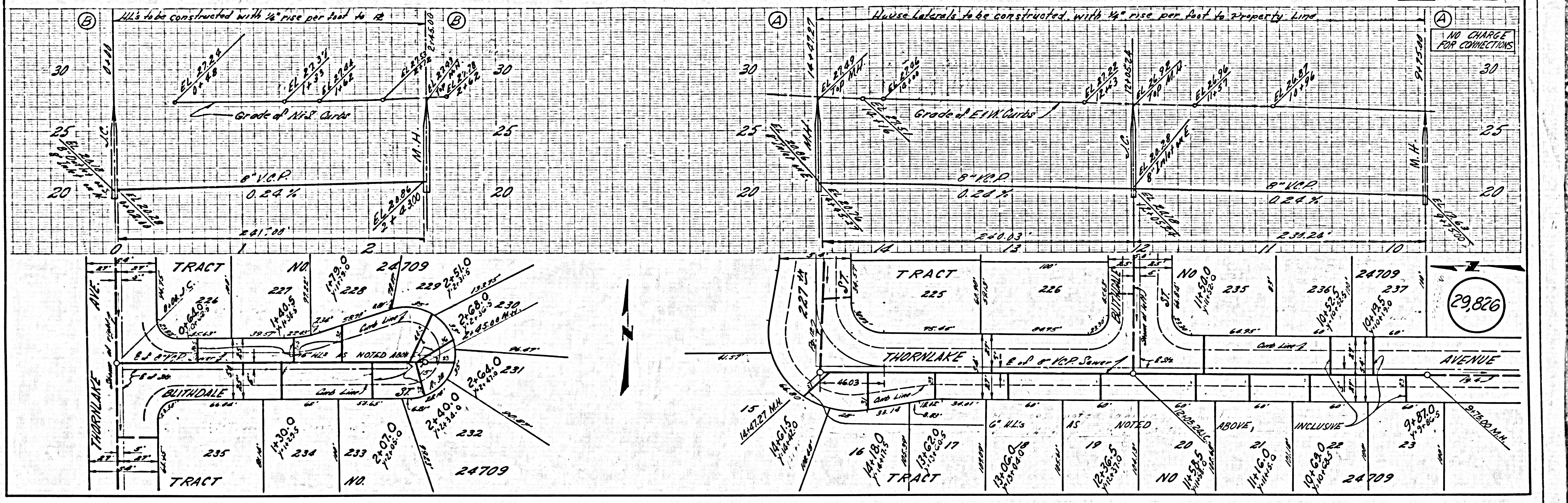
- NOTES:
1. PROVIDE STAKES ON THE PROPERTY LINE OR PROPERTY LINES PRODUCED AT RIGHT ANGLES TO THE SEWER LINE AT THE CENTER LINE OF EACH MANHOLE.
 2. NO REPRESENTATIVE OF THE COUNTY ENGINEER WILL SURVEY OR LAY OUT ANY PORTION OF THE WORK.
 3. THE OWNER OR HIS AUTHORIZED REPRESENTATIVE SHALL FURNISH THE COUNTY ENGINEER WITH GRADE SHEETS AND STATIONING FOR ALL HOUSE LATERALS AND Y BRANCHES AND SHALL PROVIDE STAKES FOR THEM AT THEIR PROPER LOCATIONS WITH STATIONING PLAINLY MARKED. ANY CHANGE IN LOCATION SHALL BE REQUESTED IN WRITING BY THE OWNER OR HIS REPRESENTATIVE.
 4. THE PRIVATE ENGINEER SHALL FURNISH THE HOUSE LATERAL DEPTH AT THE PROPERTY LINE BELOW THE TOP OF CURB ELEVATION FOR EACH HOUSE LATERAL ON THE GRADE SHEET.
 5. NO REVISIONS SHALL BE MADE IN THESE PLANS WITHOUT THE APPROVAL OF THE COUNTY ENGINEER.
 6. USE STANDARD MANHOLE FRAMES AND COVERS, S-117, EXCEPT AS NOTED.
 7. USE STANDARD STRENGTH PIPE EXCEPT AS NOTED.
 8. USE "WEDGE-LOC" OR "SEAL-LOC" FOR ALL V.C.P. JOINTS PER SPECS., SECS. 24 & 48.
 9. RESURFACE ALL TRENCH WITHIN PAVED AREA TO MEET L.A. COUNTY ROAD DEPT. OR CALIF. STATE HIGHWAY REQUIREMENTS IN ACCORDANCE WITH PERMITS.
 10. ENCASE FOUR FEET OF SEWER AT POINTS OF INTERFERENCE WITH POLES, CASE III, S-172.
 11. HOUSE LATERALS TO BE CONSTRUCTED WITH INVERTS AT PROPERTY LINE 8 FEET BELOW CURB GRADE EXCEPT AS NOTED.
 12. ALL STRUCTURES SHALL BE BRICK SEWER STRUCTURES, S-104.
 13. FOR ALLOWABLE LEAKAGE TEST USE FORMULA NO. 2, SPECS., SEC. 54.
 14. MANHOLE TOPS IN UNIMPROVED RIGHTS-OF-WAY TO BE SIX INCHES ABOVE FINISHED GRADE.
 15. THE CONTRACTOR SHALL NOTIFY THE CONSTRUCTION DIVISION BY TELEPHONE, MADISON 5-4747, AT LEAST TWENTY-FOUR HOURS BEFORE STARTING ANY WORK UNDER THIS CONTRACT.
 16. STANDARD SPECIFICATIONS DATED JANUARY 1, 1960, SHALL APPLY IN THE CONSTRUCTION OF THIS PROJECT.

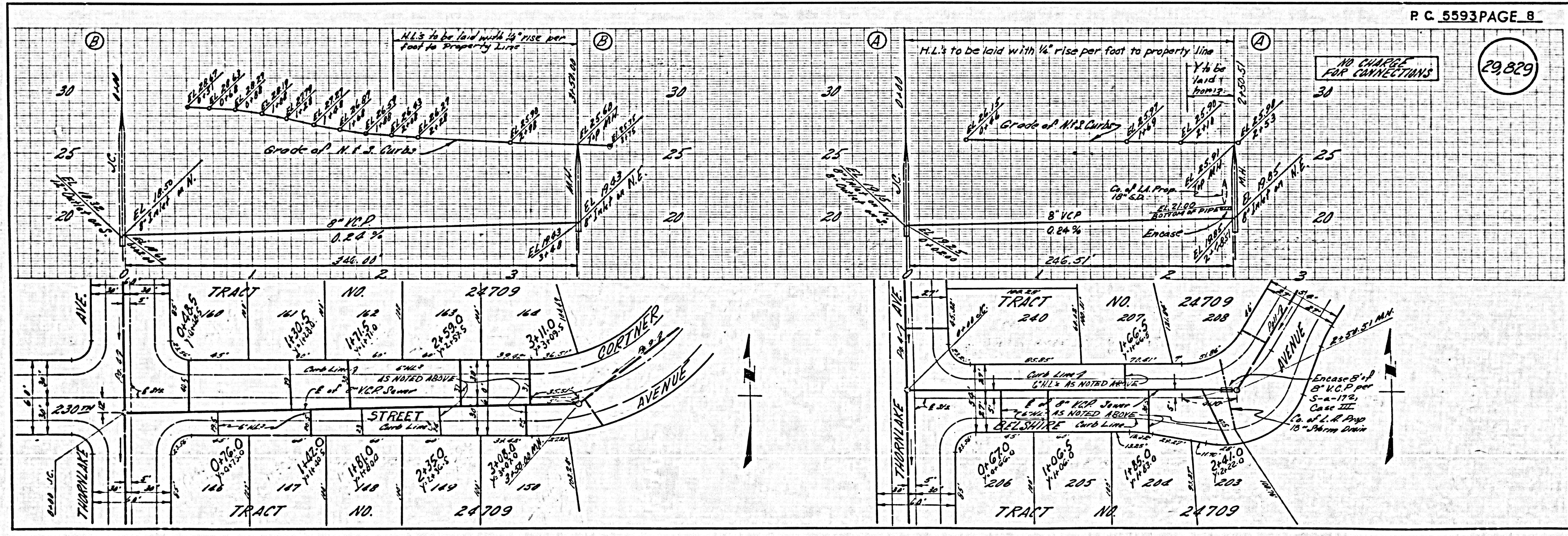
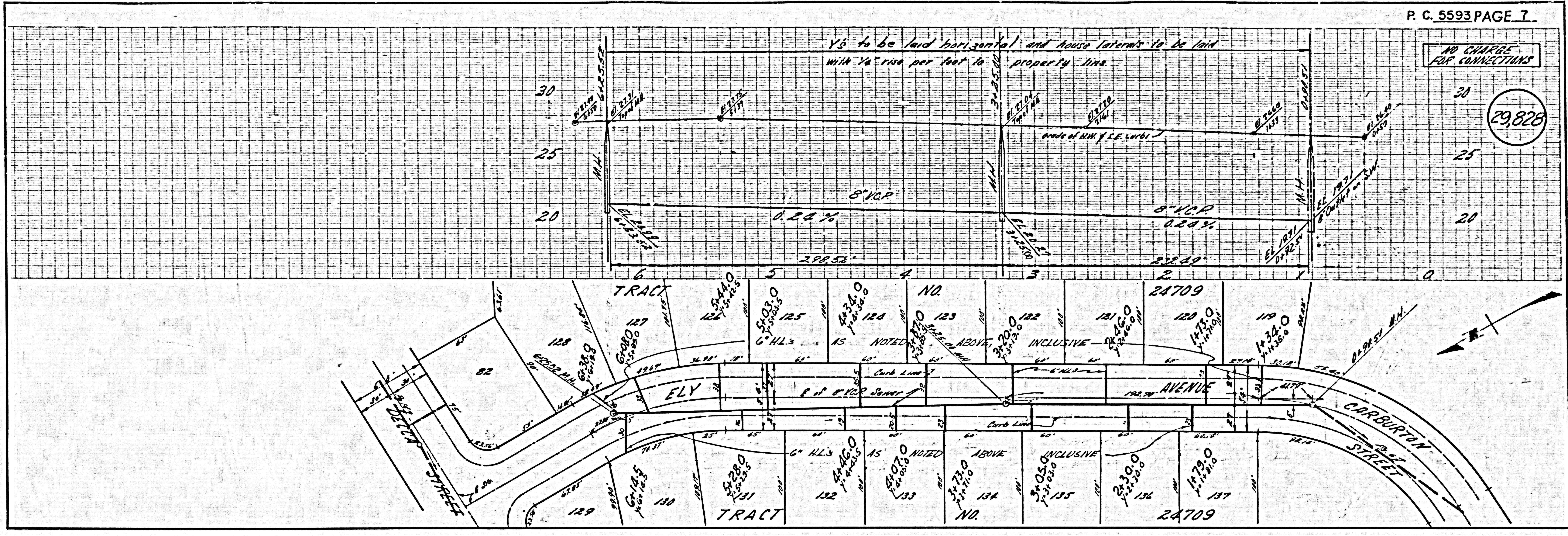


NO CHARGE FOR CONNECTIONS

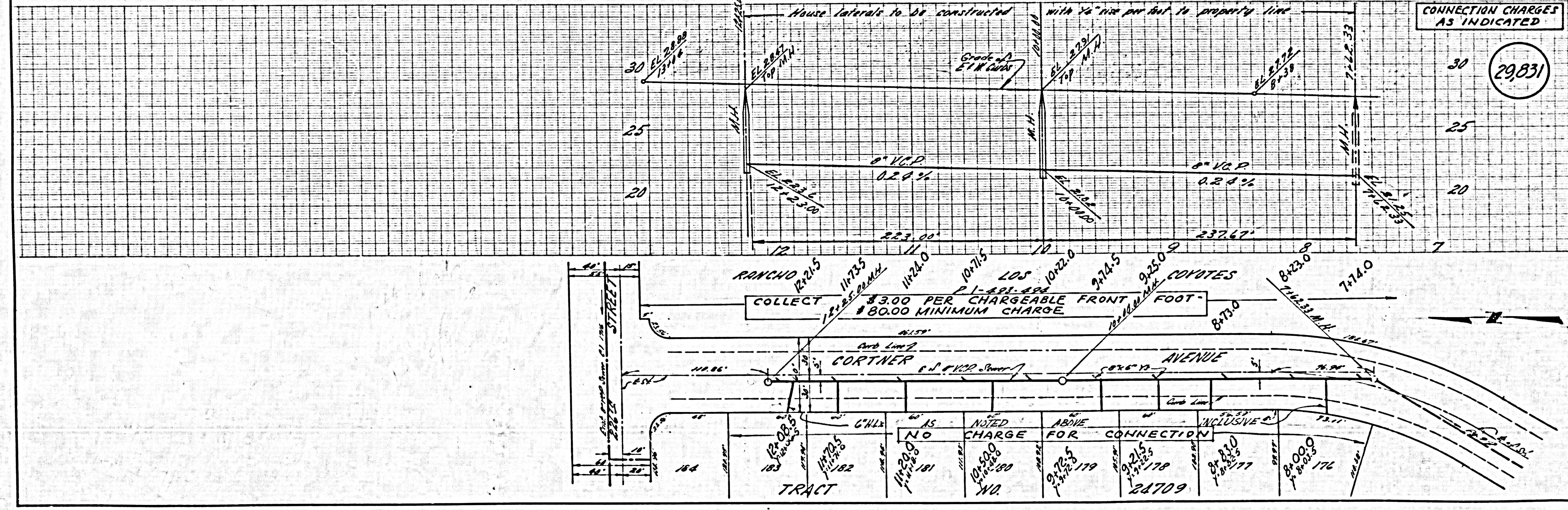
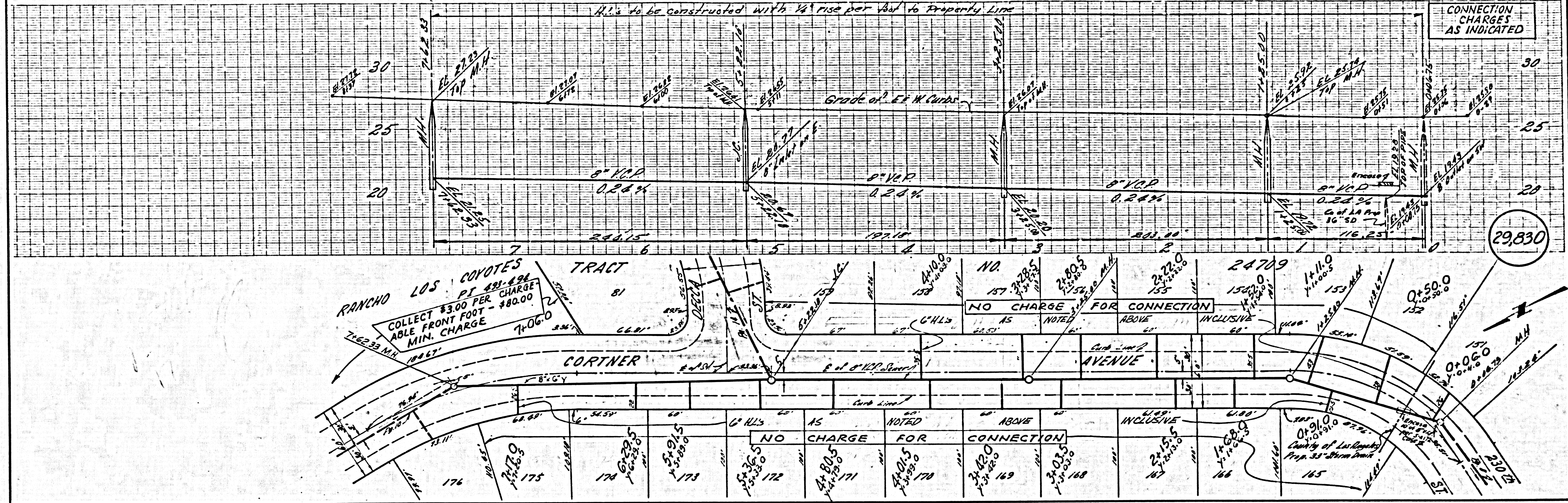
29823



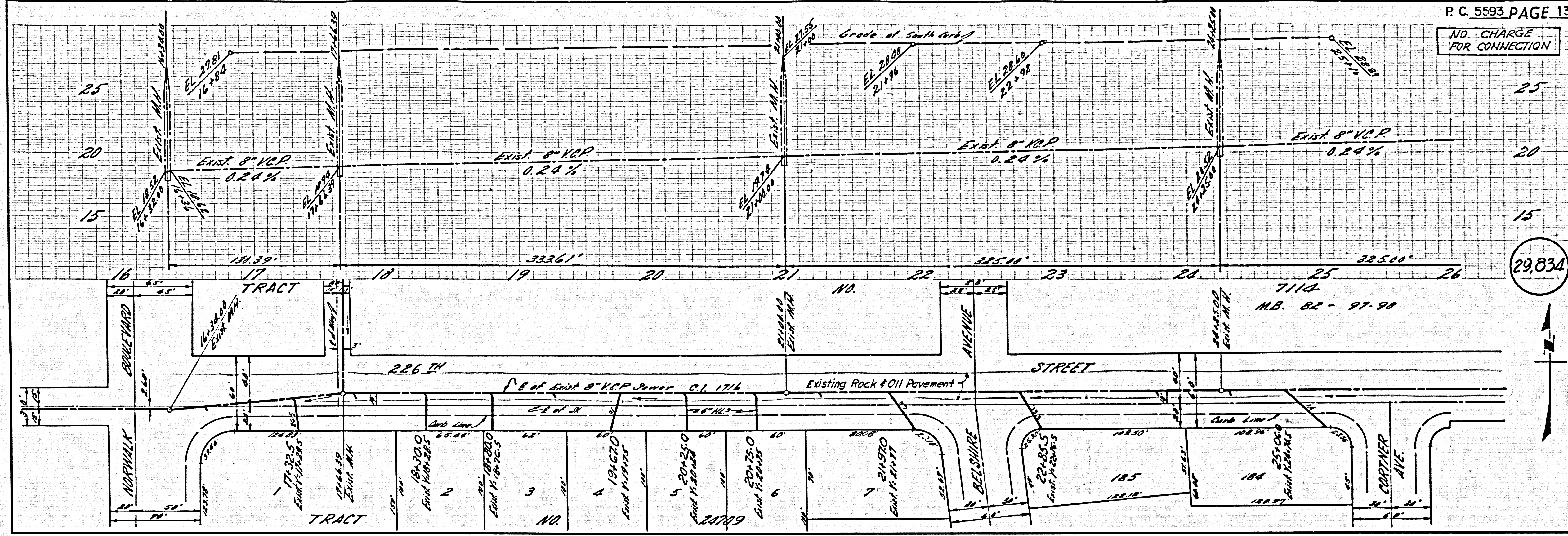




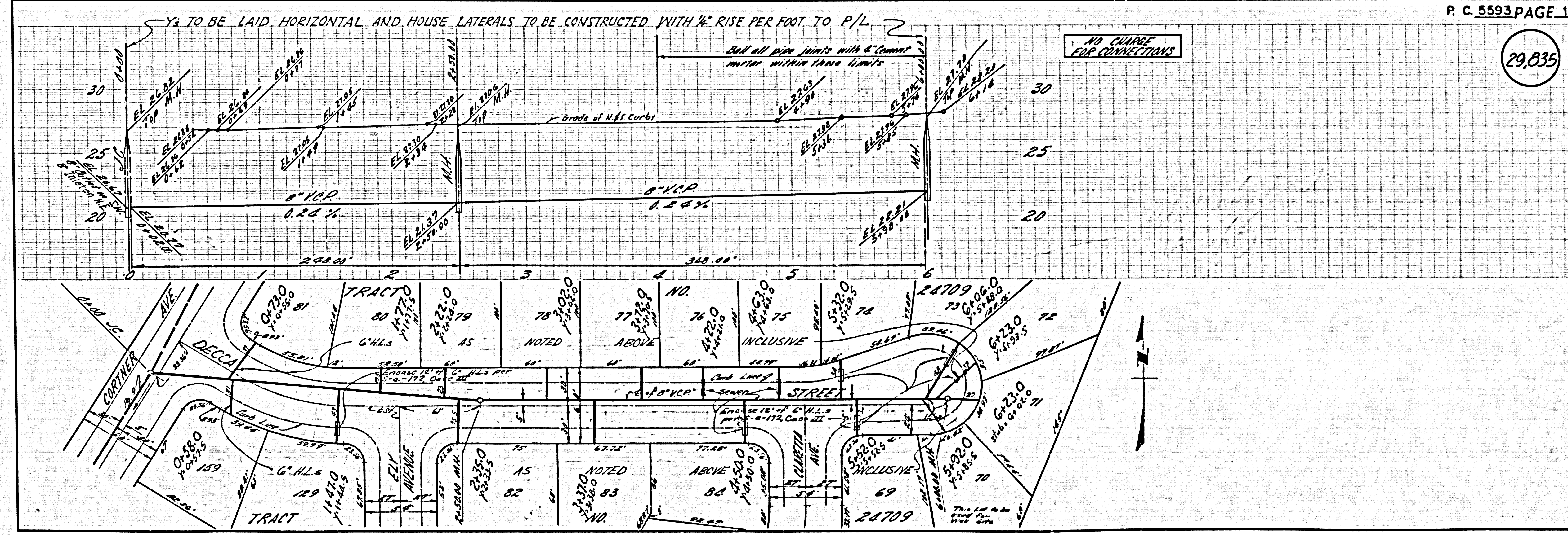
PC 5593-11-13-30-10112-11000



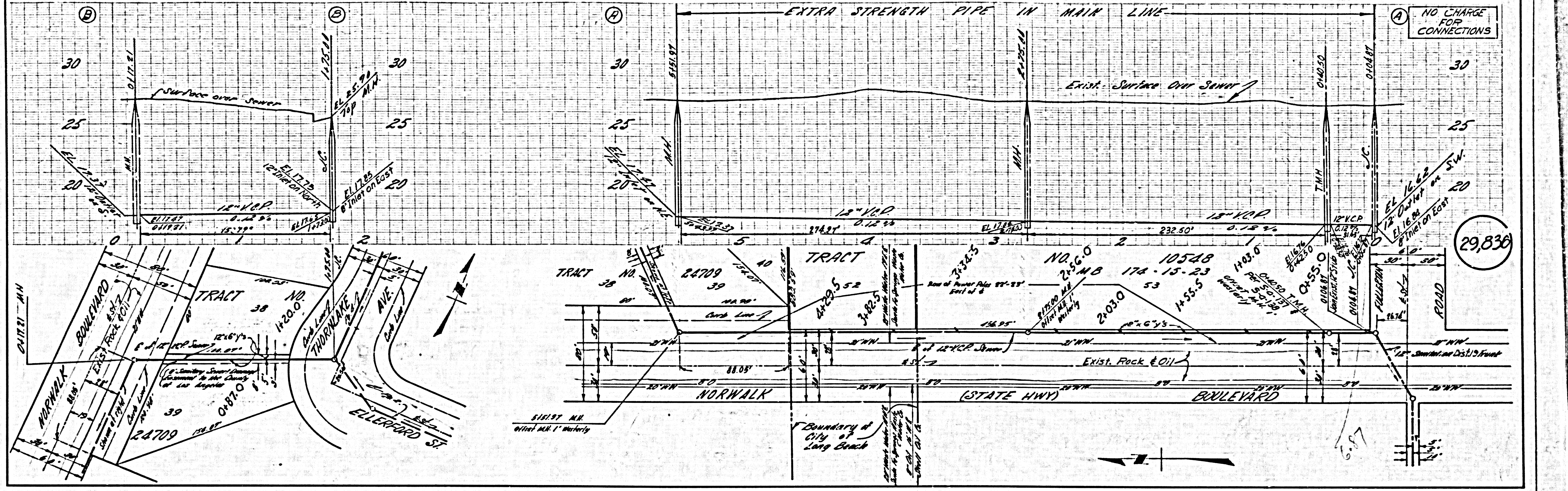
NO CHARGE FOR CONNECTION



NO CHARGE FOR CONNECTIONS



NO CHARGE FOR CONNECTIONS



29,836

BC 223 M 03320 15NCL 54100