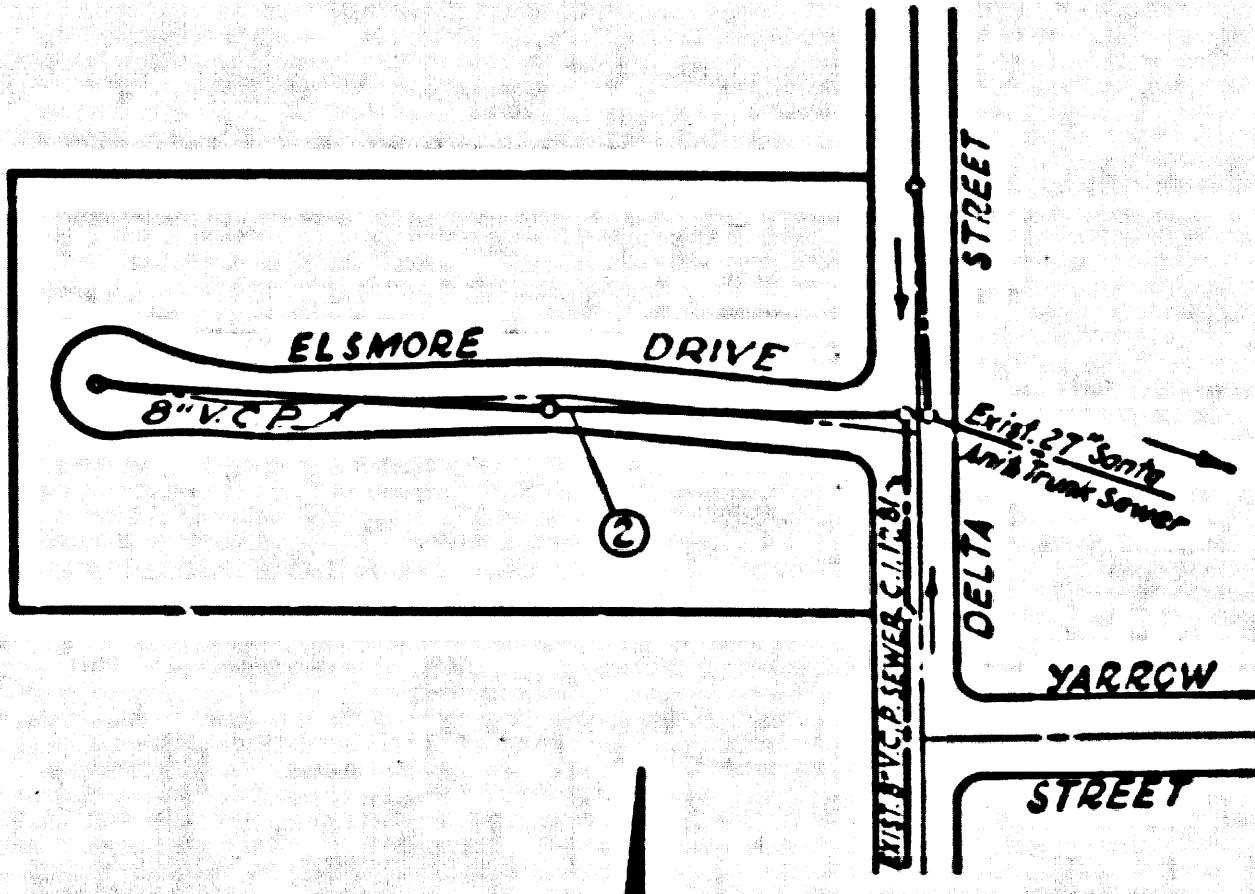


Bench Marks L.A.C.S. Mon. @ Intersection
 Hill Drive & San Gabriel Boulevard
 (S.Y. 3328) El. 335.870, Rivera Quad. 1959



INDEX MAP
 TRACT NO. 25852
 SCALE 1"=200'
 P.C. 5602

NO CHARGE
 FOR CONNECTIONS
W.J. Lee 9/19/60

TEMPLE CITY BLDG. DIST. NO. 5

- NOTE:
1. PROVIDE STAKES ON THE PROPERTY LINE OR PROPERTY LINES PRODUCED AT RIGHT ANGLES TO THE SEWER LINE AT THE CENTER LINE OF EACH MANHOLE.
 2. NO REPRESENTATIVE OF THE COUNTY ENGINEER WILL SURVEY OR LAY OUT ANY PORTION OF THE WORK.
 3. THE OWNER OR HIS AUTHORIZED REPRESENTATIVE SHALL FURNISH THE COUNTY ENGINEER WITH GRADE SHEETS AND STATIONING FOR ALL HOUSE LATERALS AND Y BRANCHES AND SHALL PROVIDE STAKES FOR THEM AT THEIR PROPER LOCATIONS WITH STATIONING PLAINLY MARKED. ANY CHANGE IN LOCATION SHALL BE REQUESTED IN WRITING BY THE OWNER OR HIS REPRESENTATIVE.
 4. THE PRIVATE ENGINEER SHALL FURNISH THE HOUSE LATERAL DEPTH AT THE PROPERTY LINE BELOW THE TOP OF CURB ELEVATION FOR EACH HOUSE LATERAL ON THE GRADE SHEET.
 5. NO REVISIONS SHALL BE MADE IN THESE PLANS WITHOUT THE APPROVAL OF THE COUNTY ENGINEER.
 6. USE STANDARD MANHOLE FRAMES AND COVERS, S-6117.
 7. USE STANDARD STRENGTH PIPE.
 8. USE CEMENT MORTAR OR "WEDGE-LOCK" OR "SPREAD-SEAL" FOR ALL V.C.P. JOINTS PER S.P.C.S., SECT. 26 & 28.
 9. RESURFACE ALL TRENCH WITHIN PAVED AREA TO MEET L.A. COUNTY ROAD DEPT. OR CALIF. STATE HIGHWAY REQUIREMENTS IN ACCORDANCE WITH PERMITS.
 10. ENCASE FOUR FEET OF SEWERS AT POINTS OF INTERFERENCE WITH POLES, CASE III, S-6-172.
 11. HOUSE LATERALS TO BE CONSTRUCTED WITH INVERTS AT PROPERTY LINE... 6 FEET BELOW CURB GRADE EXCEPT AS NOTED.
 12. ALL STRUCTURES SHALL BE BRICK SEWER STRUCTURES, S-6-164.
 13. FOR ALLOWABLE ITAKAGE TEST USE FORMULA NO. 2, S.P.C.S., SEC. 24.
 14. THE CONTRACTOR SHALL NOTIFY THE CONSTRUCTION DIVISION BY TELEPHONE, MADISON 9-07, EXT. 8151 AT LEAST TWENTY-FOUR HOURS BEFORE STARTING ANY WORK UNDER THIS CONTRACT.
 15. STANDARD SPECIFICATIONS DATED JAN. 1, 1960 APPLY IN THE CONSTRUCTION OF THIS PROJECT.

FIGURES IN CIRCLES AT ENDS OF HOUSE LATERALS INDICATE
 Depth Below Curb Grade
~~Depth Below Grade~~
 PER FOOT TO PROPERTY LINE

ENGINEERING SERVICE CORPORATION 1127 W. WASHINGTON BLVD. LOS ANGELES 15, CALIF. RI. 9-7281	
REVISIONS	TRACED BY <u>S. PALZONE</u>
	DES'G'D BY <u>D. HUIE</u>
	CK'D BY <u>A. J.</u>
	SUBMITTED
SUB STRUCTURES OK'D	
W. O. NO.	DWG. NO.
6940-32	May 1960
DATE	SCALE
May 1960	As Shown
	L. B.
	P. D.
	L.L.

PROFILE ALIGNMENT AND GRADE OF P.C. 5602
 SANITARY SEWERS PAGE 1
 TO BE CONSTRUCTED IN JN 0354.02
ELSMORE DRIVE

PRIVATE CONTRACT NO. 5602
 W.S. 36
 1 SHEETS; 2 PAGES
 SCALE: VERT. 1"=4' HORIZ. 1"=40'
 JULY, 1960
 PREPARED IN THE OFFICES OF
ENGINEERING SERVICE CORPORATION
 BY S. Palzone
 REG. C. E. NO. 3622
 FOR LEGEND SEE PLAN NO. S-A-64

30,189

NOTES:
 GRADES TO WHICH THIS IMPROVEMENT IS TO BE CONSTRUCTED ARE SHOWN ON PLANS AND PROFILE. GRADE POINTS FOR TOP OF CURBS, CENTER LINE OF STREETS, OR CENTER LINE OF ALLEYS ARE SHOWN BY CIRCLES ON PROFILES. AT ALL POINTS BETWEEN DESIGNATED POINTS THE GRADE SHALL BE ESTABLISHED SO AS TO CONFORM TO A STRAIGHT LINE DRAWN BETWEEN SAID DESIGNATED POINTS.

ELEVATIONS ARE IN FEET ABOVE U.S.C. & G.S. MEAN DATUM OF 1929.

THE DRAWINGS AND THE DATA HEREON ARE HEREBY MADE A PART OF THE SPECIFICATIONS.

WORK SHALL BE CONSTRUCTED ACCORDING TO SPECIFICATIONS ON FILE IN THE OFFICE OF THE COUNTY ENGINEER AND SHALL BE INSPECTED ONLY IN THE PRESENCE OF THE COUNTY ENGINEER.

BEFORE WORK CAN BE STARTED, THE CONTRACTOR MUST OBTAIN A PERMIT TO EXCAVATE IN COUNTY STREETS FROM THE L.A. COUNTY ROAD DEPT., DISTRICT OFFICE NO. 25 AND PAY A FEE TO THE COUNTY ENGINEER, ROOM 324-PAN AMERICAN BUILDING, 228 SO. BROADWAY SUFFICIENT TO COVER THE COST OF CONSTRUCTION INSPECTION AND RECORD PLANS.

APPROVAL OF THIS PLAN BY THE COUNTY OF LOS ANGELES DOES NOT CONSTITUTE A REPRESENTATION AS TO THE ACCURACY OF THE LOCATION OF OR THE EXISTENCE OR NON-EXISTENCE OF ANY UNBARRICADED UTILITY PIPE, OR STRUCTURE WITHIN THE LIMITS OF THIS PROJECT. THIS NOTE APPLIES TO ALL PAGES.

IF WORK IS TO BE DONE IN A STATE HIGHWAY, A PERMIT MUST BE OBTAINED FROM THE STATE OF CALIFORNIA, DIVISION OF HIGHWAYS, 128 SOUTH SPRING STREET.

COUNTY OF LOS ANGELES, CALIFORNIA

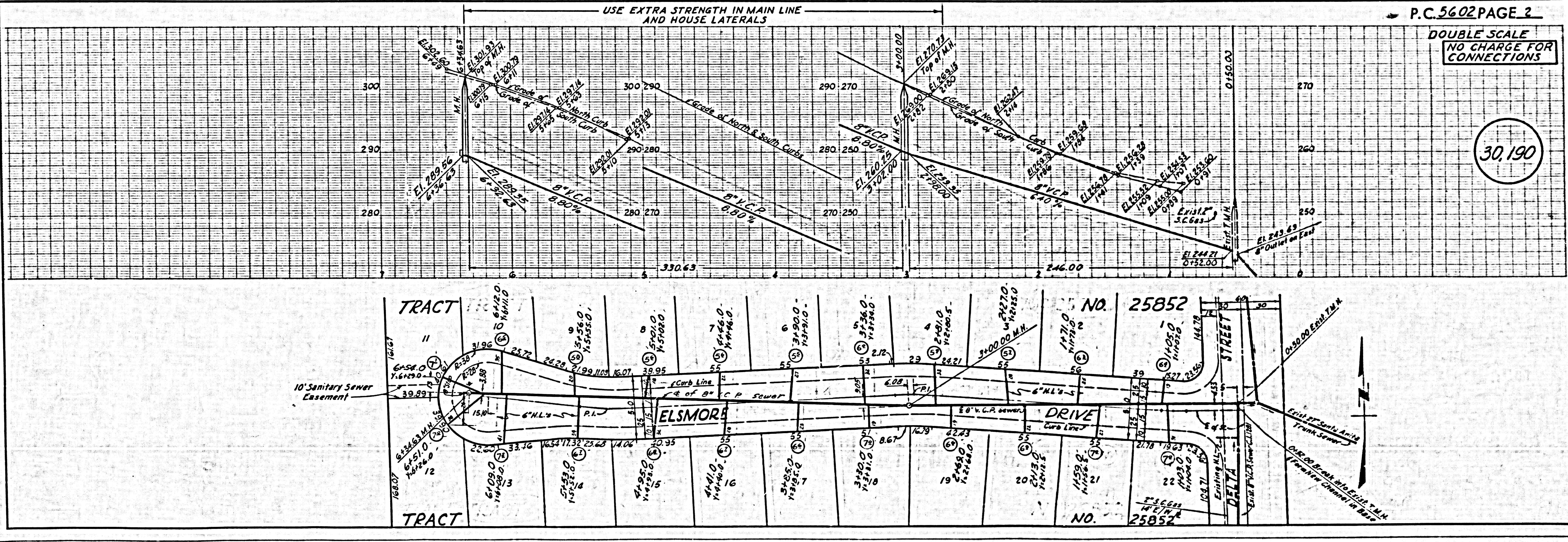
APPROVED, JOHN A. LAMME, COUNTY ENGINEER

APPROVED, C.R. COMPTON, CHIEF ENGINEER
 CO. SEAL NO. 15

BY S. Palzone OFFICE ENGINEER
 4517 S. SANITARIUM BLDG.

CHECKED BY A. J.
 OFFICE OF COUNTY ENGINEER, S.P.C. & E. NO. 7204

Submitted N.F. Brauer
 San Gabriel Valley Regional Engineer



DOUBLE SCALE
 NO CHARGE FOR
 CONNECTIONS

30,190