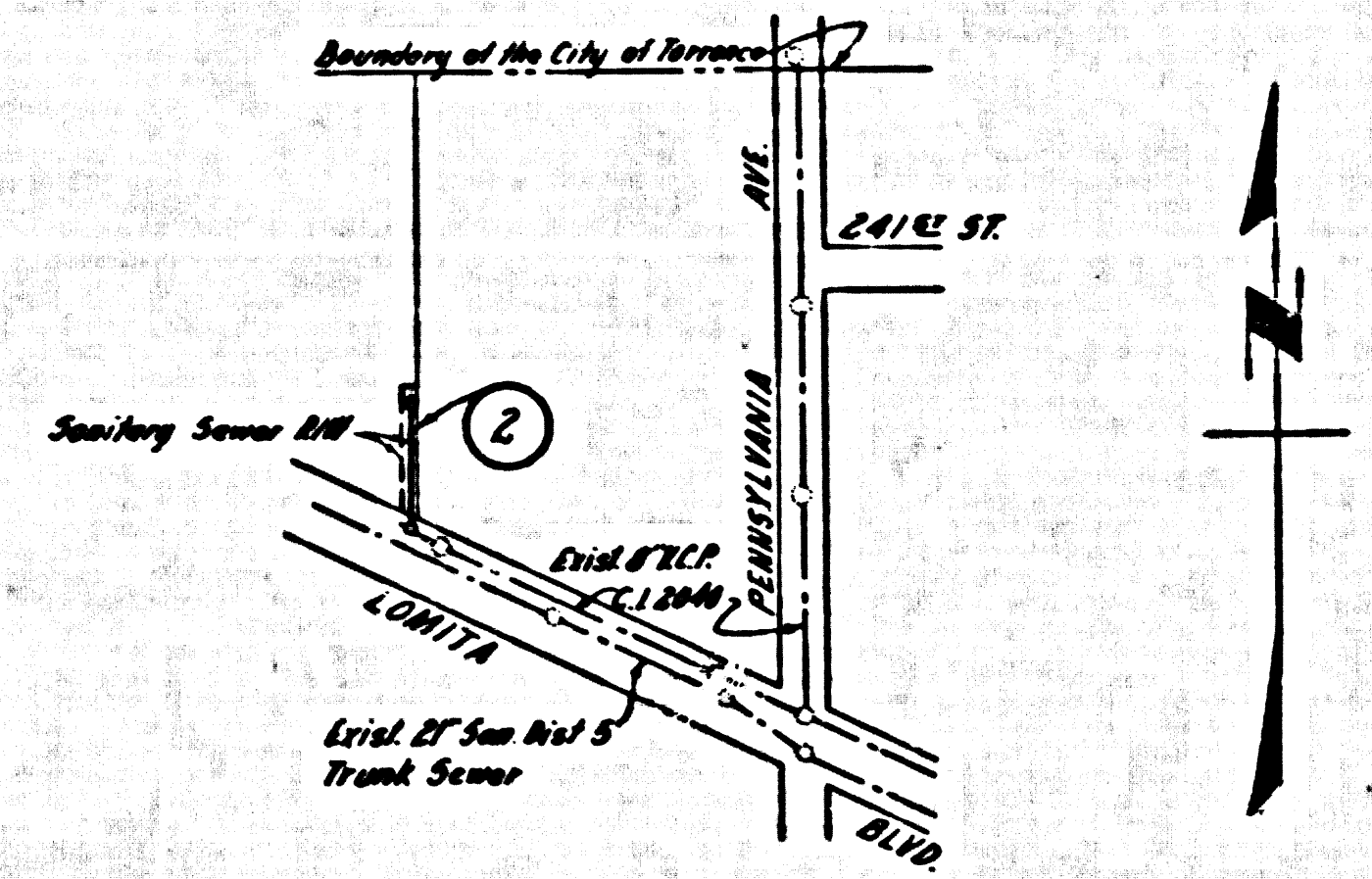


B.M. 3530-A Elev. 71.456 I.B. 1477 Py. 446
 Lomita Blvd (S. Side) 551' L.A. # 2336
 Div. 81 Sp. in Conv. Drive No. 2336



INDEX MAP
 P.C. 5605
 R/W N/O LOMITA BLVD
 Scale: 1"=300'

LOMITA BLDG. DIST. NO. 7.I

PROFILE ALIGNMENT AND GRADE OF **P.C. 5605**
SANITARY SEWERS PAGE 1
 TO BE CONSTRUCTED IN J.N. 035403

R/W N/O LOMITA BLVD.

PRIVATE CONTRACT NO. 5605

W.S. 27
 1 SHEET OF 2 PAGES

SCALE: VERT. 1"=4' JULY, 1960
 HORIZ. 1"=40' PREPARED IN THE OFFICES OF

30423

BY: Chas. Murray 03/60
 REG. C. E. NO. 2548

FOR LEGEND SEE PLAN NO. S-A-64

- NOTES:**
1. PROVIDE STAKES ON THE PROPERTY LINE OR PROPERTY LINES PRODUCED AT RIGHT ANGLES TO THE SEWER LINE AT THE CENTER LINE OF EACH MANHOLE.
 2. NO REPRESENTATIVE OF THE COUNTY ENGINEER WILL SURVEY OR LAY OUT ANY PORTION OF THE WORK.
 3. THE OWNER OR HIS AUTHORIZED REPRESENTATIVE SHALL FURNISH THE COUNTY ENGINEER WITH GRADE SHEETS AND STATIONING FOR ALL HOUSE LATERALS AND Y BRANCHES AND SHALL PROVIDE STAKES FOR THEM AT THEIR PROPER LOCATIONS WITH STATIONING PLAINLY MARKED. ANY CHANGE IN LOCATION SHALL BE REQUESTED IN WRITING BY THE OWNER OR HIS REPRESENTATIVE.
 4. THE PRIVATE ENGINEER SHALL FURNISH THE HOUSE LATERAL BIRTH AT THE PROPERTY LINE BELOW THE TOP OF CURB ELEVATION FOR EACH HOUSE LATERAL ON THE GRADE SHEET.
 5. NO REVISIONS SHALL BE MADE IN THESE PLANS WITHOUT THE APPROVAL OF THE COUNTY ENGINEER.
 6. USE STANDARD MANHOLE FRAMES AND COVERS, S-117.
 7. USE STANDARD STRENGTH PIPE.
 8. USE CEMENT MORTAR OR "WEDGELOCK" OR "3" 20-SEAL" FOR ALL V.C.P. JOINTS PER SPECS. SECS. M & 4L.
 9. RESURFACE ALL TRENCH WITHIN PAVED AREA TO MEET L.A. COUNTY ROAD DEPT. OR CALIF. STATE HIGHWAY REQUIREMENTS IN ACCORDANCE WITH PERMITS.
 10. ENCASE FOUR FEET OF SEWER AT POINTS OF INTERFERENCE WITH POLES, CASE III, S-172.
 - 11.
 12. ALL STRUCTURES SHALL BE BRICK SEWER STRUCTURES, S-104.
 13. FOR ALLOWABLE LEAKAGE TEST USE FORMULA NO. 1.
 14. MANHOLE TOPS IN UNIMPROVED RIGHTS-OF-WAY TO BE SIX INCHES ABOVE FINISHED GRADE.
 15. THE CONTRACTOR SHALL NOTIFY THE CONSTRUCTION & LICENSING DIVISION BY TELEPHONE, MADISON 3-4743, EXT. 3841 AT LEAST TWENTY-FOUR HOURS BEFORE STARTING ANY WORK UNDER THIS CONTRACT.
 16. STANDARD SPECIFICATIONS DATED OCT. 16, 1960 APPLY IN THE CONSTRUCTION OF THIS PROJECT.
 17. THE CONTRACTOR SHALL SATISFY HIMSELF OF ALL SUB-STRUCTURES WHETHER SHOWN HERE-ON OR NOT AND SHALL BE RESPONSIBLE FOR ANY DAMAGE TO SAME.

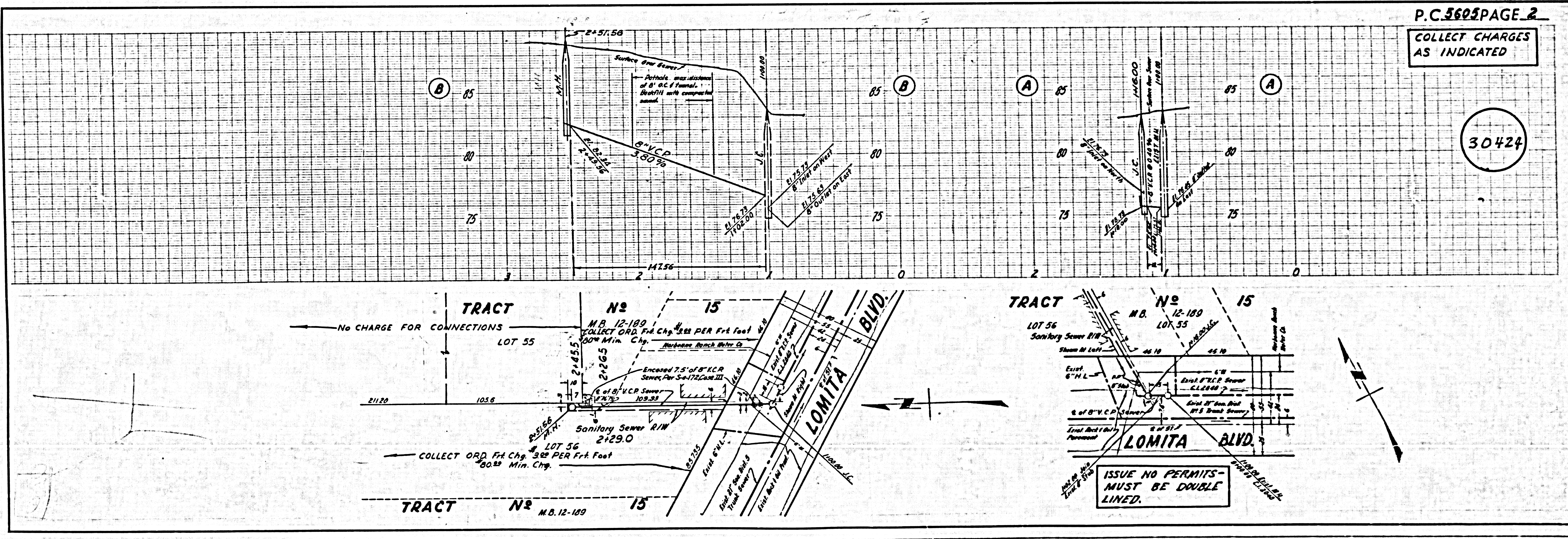
COLLECT CHARGES AS INDICATED
L. Curtis 11/14/60

Revision:
 Moved M.H. in R/W from Sta. 2+68.26 to Sta. 2+51.56 - due to error in survey
 Approved: Edward J. Smith
 Reg. C.E. No. 7267 3/26/61

REVISION:
 Moved M.H. in Lomita Blvd from Sta. 1+10.01 to Sta. 1+00.00 to avoid interference with power poles
 Approved: Edward J. Smith
 Reg. C.E. No. 7267

NOTE:
 GRADES TO WHICH THIS IMPROVEMENT IS TO BE CONSTRUCTED ARE SHOWN ON PLANS AND PROFILE GRADE POINTS FOR TOP OF CURBS, CENTER LINE OF STREETS OR CENTER LINE OF ALLEYS ARE SHOWN BY CIRCLES ON PROFILES AT ALL POINTS BETWEEN DESIGNATED POINTS THE GRADE SHALL BE ESTABLISHED SO AS TO CONFORM TO A STRAIGHT LINE DRAWN BETWEEN SAID DESIGNATED POINTS.
 ELEVATIONS ARE IN FEET ABOVE U.S.C. & G.S. SEA LEVEL DATUM OF 1929.
 THIS DRAWING AND THE DATA HEREON ARE HEREBY MADE A PART OF THE SPECIFICATIONS.
 WORK SHALL BE CONSTRUCTED ACCORDING TO SPECIFICATIONS ON FILE IN THE OFFICE OF THE COUNTY ENGINEER AND SHALL BE PROSECUTED ONLY IN THE PRESENCE OF THE COUNTY ENGINEER.
 BEFORE WORK CAN BE STARTED, THE CONTRACTOR MUST OBTAIN A PERMIT TO EXCAVATE IN COUNTY STREETS FROM THE L. A. COUNTY ROAD DEPT., DISTRICT OFFICE NO. 1000, 475 N. PUEBLO ST., LOS ANGELES, CALIF. THE COUNTY ENGINEER'S ROOM 124 FAN AMERICAN BUILDING, 343 SO. BROADWAY, SUITE 1010, LOS ANGELES, CALIF. IS NOT A CONTRACTOR INSPECTOR AND RECORD PLANS.
 APPROVAL OF THIS PLAN BY THE COUNTY OF LOS ANGELES DOES NOT CONSTITUTE A REPRESENTATION AS TO THE ACCURACY OF THE LOCATION OF OR THE EXISTENCE OR NON-EXISTENCE OF ANY UNDERGROUND UTILITY PIPE, OR STRUCTURE WITHIN THE LIMITS OF THIS PROJECT. THIS NOTE APPLIES TO ALL PAGES.
 IF WORK IS TO BE DONE IN A STATE HIGHWAY, A PERMIT MUST BE OBTAINED FROM THE STATE OF CALIFORNIA, DIVISION OF HIGHWAYS, 128 SOUTH SPRING STREET.

COUNTY OF LOS ANGELES, CALIFORNIA
 APPROVED, JOHN A. LAMBE, COUNTY ENGINEER APPROVED, C. R. COMPTON, CHIEF ENGINEER
 BY: C. E. Smith ASST. SANITATION ENGINEER BY: H. Posthumus OFFICE ENGINEER
 CHECKED BY: P. F. Worling 11-18-60
 OFFICE OF COUNTY ENGINEER, Rm. C. L. NO. 11636
 SUBMITTED Jack C. Lanning
 Reg. Home Contractors Safety Regional Engineer



P.C. 5605 PAGE 2
COLLECT CHARGES AS INDICATED

30424

ISSUE NO PERMITS - MUST BE DOUBLE LINED.