

BENCH MARK:
 Road Dept. B.M. Top in Crk. Hdl. 3.45' N. Ch.
 Old Nalley Blvd. 1.350' W. 1/4. Ferraro Lane (Basalt)
 S.G. 1740 EL. 355.544 = 1953 Adj.

REVISION:
 PAGE 2
 (A) Curb elevation raised at Station
 2+81.6 Sta. 2+84.
 PAGE 3
 (A) Curb & invert elevations raised.

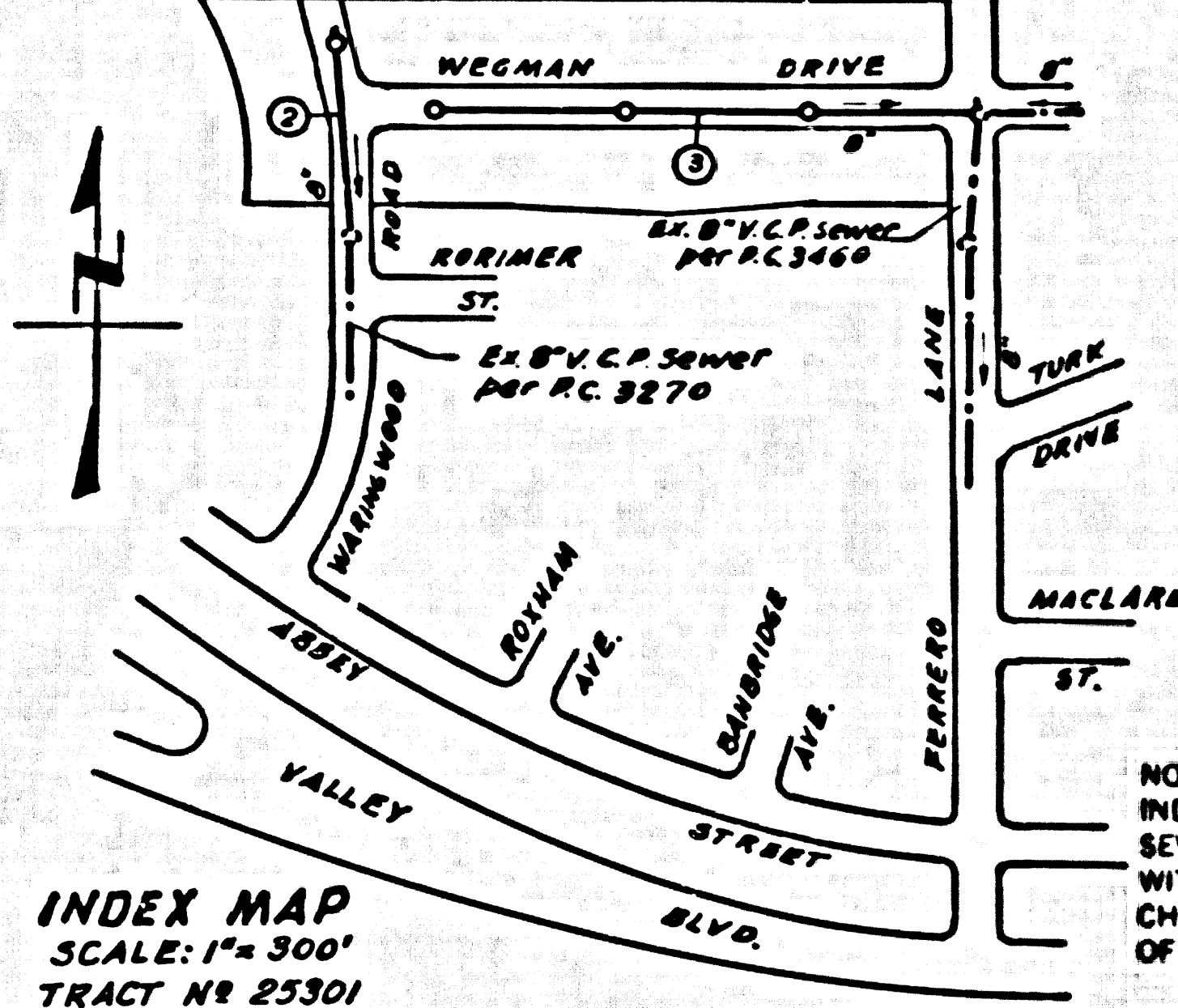
APPROVED: *W.C. Reinhardt* 3-23-61
 OFFICE OF COUNTY ENGINEER

NO CHARGE FOR
 CONNECTIONS
7/27/61

CITY OF LA PUENTE
 APPROVED *[Signature]* 6-13-60
 CITY MANAGER

LA PUENTE BLDG. DIST. NO. 2.02

- NOTE:
 PROVIDE STAKES ON THE PROPERTY LINE OR PROPERTY LINES PRODUCED AT RIGHT ANGLES TO THE SEWER LINE AT THE CENTER LINE OF EACH MANHOLE.
 NO REPRESENTATIVE OF THE CITY ENGINEER WILL SURVEY OR LAYOUT ANY PORTION OF THE WORK.
 THE OWNER OR HIS AUTHORIZED REPRESENTATIVE SHALL FURNISH THE CITY ENGINEER WITH GRADE SHEETS AND STATION FOR ALL HOUSE LATERALS AND Y BRANCHES AND SHALL PROVIDE STAKES FOR THEM AT THEIR PROPER LOCATIONS WITH STATIONING PLAINLY MARKED. ANY CHANGE IN LOCATION SHALL BE REQUESTED IN WRITING BY THE OWNER OR HIS REPRESENTATIVE.
 NO REVISIONS SHALL BE MADE IN THESE PLANS WITHOUT THE APPROVAL OF THE CITY ENGINEER.
- USE STANDARD MANHOLE FRAMES AND COVERS, S.A-117, "A".
 - USE STANDARD STRENGTH PIPE.
 - USE CEMENT MORTAR OR "WEDGEM LOCK" OR "SHEAR SEAL" PER SPECS., SECS. 361 AND 408 FOR ALL INTER-SECTION PIPE JOINTS.
 - RESURFACE ALL TRENCH WITHIN PAVED AREA TO MEET L. A. COUNTY ROAD DEPT. OR CALIF. STATE HIGHWAY DEPT. REQUIREMENTS IN ACCORDANCE WITH PERMITS.
 - SHOULDER FOUR FEET OF SEWER AT POINTS OF INTERFERENCE WITH RAISE, S.A-119.
 - HOUSE LATERALS TO BE CONSTRUCTED WITH INVERTS AT PROPERTY LINE 6 FEET BELOW CURB GRADE.
 - ALL STRUCTURES SHALL BE MADE SEWER STRUCTURES, S.A-194.
 - FOR ALLOWABLE LEAKAGE TEST USE FORMULA NO. 1 SPECS., SEC. 54.
 - MANHOLE TOPS IN UNIMPROVED RIGHTS-OF-WAY TO BE 6" ABOVE FINISHED GRADE.
 - The private engineer is to furnish the house lateral depth of the property line below the top of curb elevation for each house lateral on the ground sheet.
 - The contractor shall notify the construction division by telephone, Madison 94747 Ext 01851, at least twenty-four hours before starting any work under this contract.
 - Standard specifications dated Oct. 10, 1950 apply in the construction of this project.



PROFILE ALIGNMENT AND GRADE OF P.C. 5609
 SANITARY SEWERS PAGE 1
 TO BE CONSTRUCTED IN JN 0862. 45

TRACT No 25301

PRIVATE CONTRACT NO. 5609

W.S. 38

2 SHEETS, 3 PAGES

SCALE: HORIZ. 1"=40' VERT. 1"=4'

JUNE, 1960

PREPARED IN THE OFFICES OF

SCOTT, BLAKE & WYNNE

BY *Douglas W. Wynne* REG. C. E. NO. 3458

30411

FOR LEGEND SEE PLAN NO. S-A-64

NOTE:
 GRADES TO WHICH THE IMPROVEMENT IS TO BE CONSTRUCTED ARE SHOWN ON PLANS AND PROFILES. GRADE POINTS FOR TOP OF CURB, CENTER LINE OF STREET, OR CENTER LINE OF ALLEYS ARE SHOWN IN CIRCLES ON PROFILES. AT ALL POINTS BETWEEN DESIGNATED POINTS THE GRADE SHALL BE ESTABLISHED SO AS TO CONFORM TO A STRAIGHT LINE DRAWN BETWEEN SAID DESIGNATED POINTS.
 ELEVATIONS ARE IN FEET ABOVE U.S.C. & G.S. SEA LEVEL DATUM OF 1929.
 THIS DRAWING AND THE DATA HEREON ARE HEREBY MADE A PART OF THE SPECIFICATIONS.
 WORK SHALL BE CONSTRUCTED ACCORDING TO SPECIFICATIONS ON FILE IN THE OFFICE OF THE CITY ENGINEER AND SHALL BE PROSECUTED ONLY IN THE PRESENCE OF THE CITY ENGINEER.
 BEFORE WORK CAN BE STARTED, THE CONTRACTOR MUST OBTAIN A PERMIT TO DEVIATE IN CITY STREETS FROM THE L. A. COUNTY ROAD DEPT. DIST. OFFICE AND PAY A FEE TO THE CITY OF LA PUENTE, 18317 B. MAIN ST., LA PUENTE, CALIF. SUFFICIENT TO COVER THE COST OF CONSTRUCTION INSPECTION AND RECORD PLANS.
 APPROVAL OF THIS PLAN BY THE CITY OF LA PUENTE DOES NOT CONSTITUTE A REPRESENTATION AS TO THE ACCURACY OF THE LOCATION OF OR THE EXISTENCE OR NON-EXISTENCE OF ANY UNDERGROUND UTILITY PIPE, OR STRUCTURE WITHIN THE LIMITS OF THIS PROJECT. THIS NOTE APPLIES TO ALL PAGES.
 IF WORK IS TO BE DONE IN A STATE HIGHWAY, A PERMIT MUST BE OBTAINED FROM THE STATE OF CALIFORNIA, DIVISION OF HIGHWAYS, 120 SOUTH SPRING STREET.

CITY OF LA PUENTE, CALIFORNIA

APPROVED, JOHN A. LAMBE, CITY ENGINEER

APPROVED, C.R. CAMPBELL, CHIEF ENGINEER

BY *[Signature]* ASST. SANITATION ENGINEER

BY *[Signature]* OFFICE ENGINEER

CHECKED BY *[Signature]* 12-11-60

OFFICE OF CITY ENGINEER, REG. C. E. NO. 3458

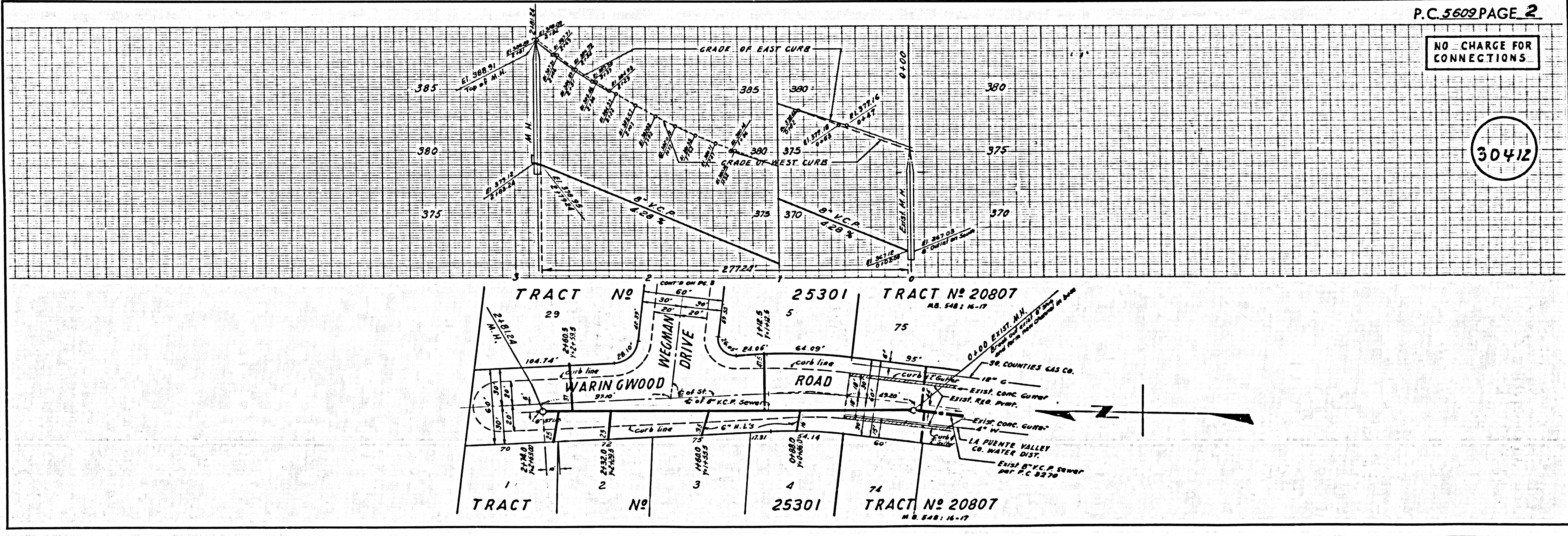
NO CONNECTIONS FOR THE DISPOSAL OF INDUSTRIAL WASTES SHALL BE MADE TO SEWERS SHOWN ON THESE DRAWINGS WITHOUT WRITTEN PERMISSION FROM THE CHIEF ENGINEER AND GENERAL MANAGER OF THE COUNTY SANITATION DISTRICTS.

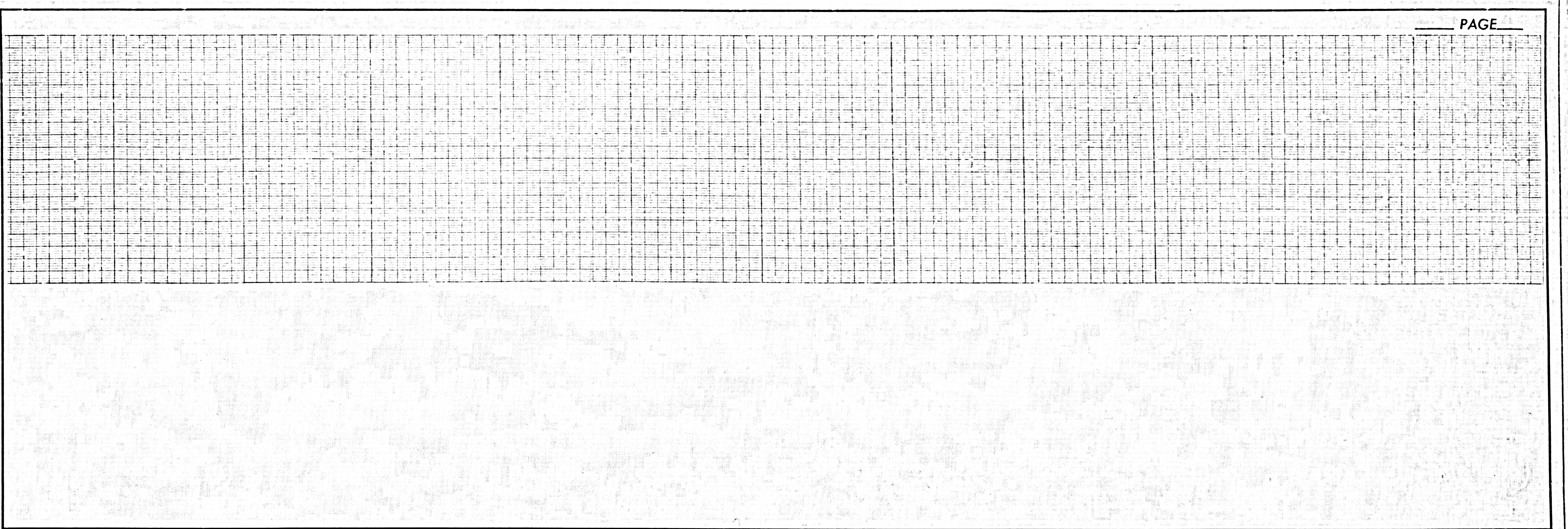
SUBMITTED *W.C. Reinhardt* SAN DIMAS REGIONAL ENGINEER

P.C. 5609 PAGE 2

NO CHARGE FOR CONNECTIONS

30412





NO CHARGE FOR CONNECTIONS

30413

