

BELFLOWER BLDG. DIST. NO. 407

PROFILE ALIGNMENT AND GRADE OF **P.C. 5617**
SANITARY SEWERS PAGE 1
 TO BE CONSTRUCTED IN
TRACT NO. 25945

PRIVATE CONTRACT NO. 5617

W.S. 33
 1 SHEET OF 2 PAGES

DATE: JULY 1960
 PREPARED IN THE OFFICES OF

BARCLAY-PEARSON CO., INC.

BY: *Edward L. Esten*
 REG. C. E. NO. 9783

FOR LEGEND SEE PLAN NO. S-A-44

NOTE:
 GRADES TO WHICH THIS IMPROVEMENT IS TO BE CONSTRUCTED ARE SHOWN ON PLANS AND PROFILES. GRADE POINTS FOR TOP OF CURB, CENTER LINE OF STREETS, OR CENTER LINE OF ALLEYS ARE SHOWN BY CIRCLES ON PROFILES. AT ALL POINTS BETWEEN DESIGNATED POINTS THE GRADE SHALL BE ESTABLISHED SO AS TO CONFORM TO A STRAIGHT LINE DRAWN BETWEEN SAID DESIGNATED POINTS.
 ELEVATIONS ARE IN FEET ABOVE U.S.C. & G.S. SEA LEVEL DATUM OF 1929.
 THIS DRAWING AND THE DATA HEREON ARE HEREBY MADE A PART OF THE SPECIFICATIONS.
 WORK SHALL BE CONSTRUCTED ACCORDING TO SPECIFICATIONS ON FILE IN THE OFFICE OF THE CITY ENGINEER AND SHALL BE PROSECUTED ONLY IN THE PRESENCE OF THE COUNTY ENGINEER.
 BEFORE WORK CAN BE STARTED THE CONTRACTOR MUST OBTAIN A PERMIT TO EXCAVATE IN CITY STREETS FROM THE L.A. COUNTY ROAD DEPT., DISTRICT OFFICE NO. 4 AND MAKE A DEPOSIT WITH THE CITY OF BELFLOWER \$25.00 BELFLOWER BELFLOWER, CALIF. TO COVER THE COST OF CONSTRUCTION INSPECTION AND RECORD PLANS.
 APPROVAL OF THIS PLAN BY THE CITY OF BELFLOWER DOES NOT CONSTITUTE A GUARANTEE AS TO THE ACCURACY OF THE LOCATION OR THE EXISTENCE OR NON-EXISTENCE OF ANY UNDERGROUND UTILITY PIPE, OR STRUCTURE WITHIN THE LIMITS OF THIS PROJECT. THIS NOTE APPLIES TO ALL PAGES.
 IF WORK IS TO BE DONE IN A STATE HIGHWAY, A PERMIT MUST BE OBTAINED FROM THE STATE OF CALIFORNIA, DIVISION OF HIGHWAYS, 120 SOUTH SPRING STREET.

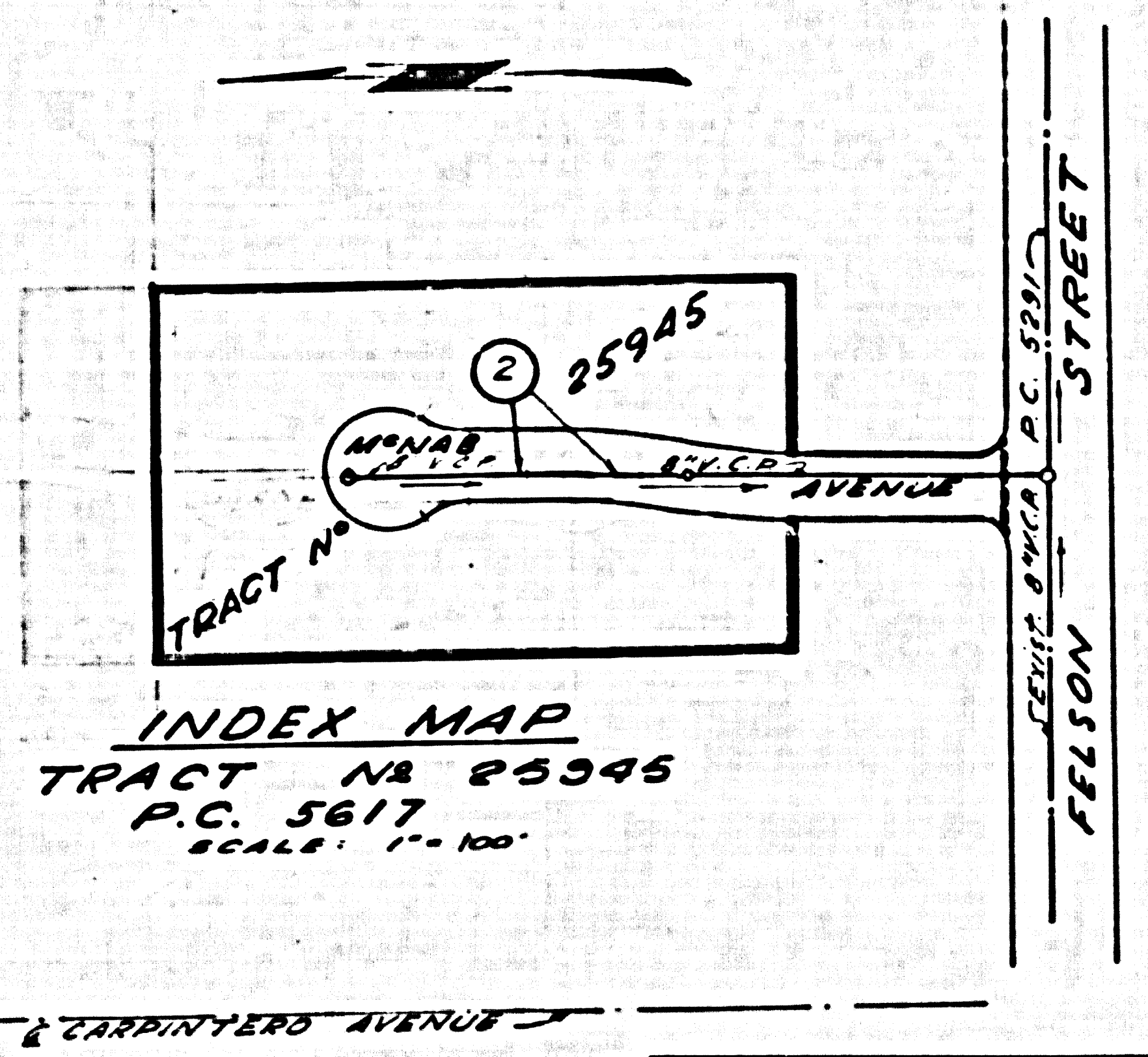
CITY OF BELFLOWER, CALIFORNIA

APPROVED, JOHN A. LAMBIE, CITY ENGINEER
 APPROVED, C.R. COMPTON, CHIEF ENGINEER
 CO. SAN. DIST. NO. 2
 BY: *E. L. Hughes* (SANITATION ENGINEER)
 BY: *E. P. Bennett* (OFFICE ENGINEER)
 CHECKED BY: *B. T. Harley* (8-26-60)
 OFFICE OF CITY ENGINEER, DIST. NO. 4, P.O. NO. 11636

SUBMITTED BY: *John L. Esten* 8-18-60
 L.A. COUNTY REGIONAL ENGINEER, P.L.C. NO. 3977

- NOTES:
1. PROVIDE STAKES ON THE PROPERTY LINE OR PROPERTY LINES PRODUCED AT RIGHT ANGLES TO THE SEWER LINE AT THE CENTER LINE OF EACH MANHOLE. OF EACH MANHOLE.
 2. NO REPRESENTATIVE OF THE CITY ENGINEER WILL SURVEY OR LAY OUT ANY PORTION OF THE WORK.
 3. THE OWNER OR HIS AUTHORIZED REPRESENTATIVE SHALL FURNISH THE CITY ENGINEER WITH GRADE SHEETS AND STATIONING FOR ALL HOUSE LATERALS AND Y BRANCHES AND SHALL PROVIDE STAKES FOR THEM AT THEIR PROPER LOCATIONS WITH STATIONING PLAINLY MARKED. ANY CHANGE IN LOCATION SHALL BE REQUESTED IN WRITING BY THE OWNER OR HIS REPRESENTATIVE.
 4. THE PRIVATE ENGINEER SHALL FURNISH THE HOUSE LATERAL DEPTH AT THE PROPERTY LINE BELOW THE TOP OF CURB ELEVATION FOR EACH HOUSE LATERAL ON THE GRADE SHEET.
 5. NO REVISIONS SHALL BE MADE IN THESE PLANS WITHOUT THE APPROVAL OF THE CITY ENGINEER.
 6. USE STANDARD MANHOLE FRAMES AND COVERS, 2-11, COVER TO ROAD SEWER.
 7. USE STANDARD STRENGTH PIPE.
 8. USE CEMENT MORTAR OR "WEDGE-LOCK" OR "SPEED-SEAL" FOR ALL V.C.A. JOINTS PER SPECS. SECS. 16 & 18.
 9. RESURFACE ALL TRENCH WITHIN PAVED AREA TO MEET L.A. COUNTY ROAD DEPT. OR CALIF. STATE HIGHWAY REQUIREMENTS IN ACCORDANCE WITH PERMITS.
 10. ENCASE FOUR FEET OF SEWER AT POINTS OF INTERFERENCE WITH POLES, CASE III, 5-112.
 11. HOUSE LATERALS TO BE CONSTRUCTED WITH 3/4" RISE PER FOOT TO PROPERTY LINE.
 12. ALL STRUCTURES SHALL BE BRICK SEWER STRUCTURES, 5-194.
 13. FOR ALLOWABLE LEAKAGE TEST USE FORMULA NO. 1, SPECS. SEC. 14.
 14. MANHOLE TOPS IN UNIMPROVED RIGHTS-OF-WAY TO BE SIX INCHES ABOVE FINISHED GRADE.
 15. THE CONTRACTOR SHALL NOTIFY THE CONSTRUCTION DIVISION BY TELEPHONE, MADISON 5400, EXTENSIVE AT LEAST TWENTY-FOUR HOURS BEFORE STARTING ANY WORK UNDER THIS CONTRACT.
 16. STANDARD SPECIFICATIONS DATED JAN. 1, 1960 APPLY IN THE CONSTRUCTION OF THIS PROJECT.

ALL THE LOCATIONS SHOWN FOR EXISTING SUBSTRUCTURES HAVE BEEN TAKEN FROM RECORDS AND THEIR CORRECTNESS AND COMPLETENESS IS IN NO WAY GUARANTEED. IT SHALL BE CONTRACTOR'S RESPONSIBILITY ALONE TO DEFINITELY LOCATE ALL UNDERGROUND LINES OF EVERY NATURE WHETHER SHOWN HEREON OR NOT, AND PROTECT THEM FROM DAMAGE. THE CONTRACTOR SHALL BEAR THE TOTAL EXPENSE OF REPAIR TO ANY LINE DAMAGED BY ANY OPERATION IN CONNECTION WITH THE PROSECUTION OF THIS WORK.



INDEX MAP
TRACT NO. 25945
P.C. 5617
 SCALE: 1" = 100'

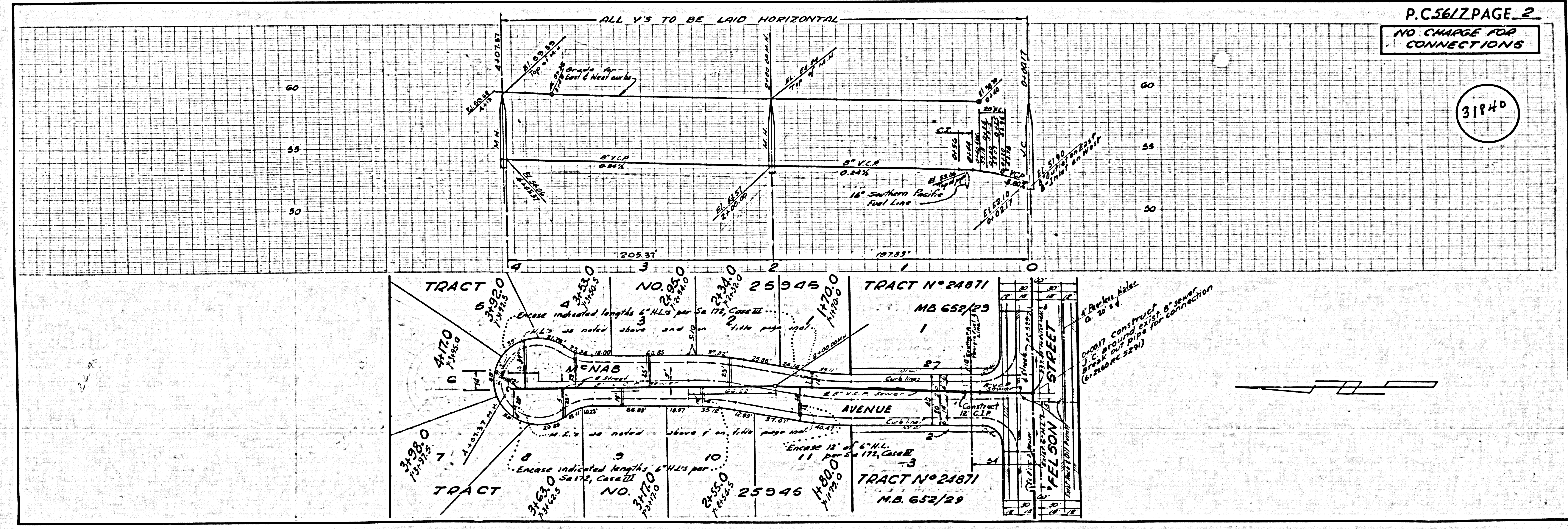
NO CHARGE FOR CONNECTIONS
Richard B. B. 10-60

BENCH MARK
 57.1492
 1.87 WEST END OF CONC. HEADWALL
 1.87 NORTH 1.87 WEST OF E. OF AFTER
 ALVD. 1' FROM SEWER AVE.
 BELFLOWER 1954-55

4-25-62 Revised M-NAB Ave Grades from STA. 0+00 to STA. 4+137.57, 57.00
 Approved: *John D. Rose* 4-25-62
 REG. C. E. NO. 12457

REVISION: UPPER MANHOLE LOCATED TO STATION 3+94.89. 8" V.C.P. SEWER ELIMINATED FROM STA. 3+97.30 TO STA. 4+73.52
John D. Rose 1-27-61
 OFFICE OF THE CITY ENGINEER - BELFLOWER

8-24-61 Revised M-NAB AVENUE & extended V.C.A. Plans
Edward L. Esten
 REG. C. E. NO. 9783
 Approved: *John L. Esten*



P.C. 5617 PAGE 2
NO CHARGE FOR CONNECTIONS

31840