

LENNOX BLDG. DIST. NO. 7

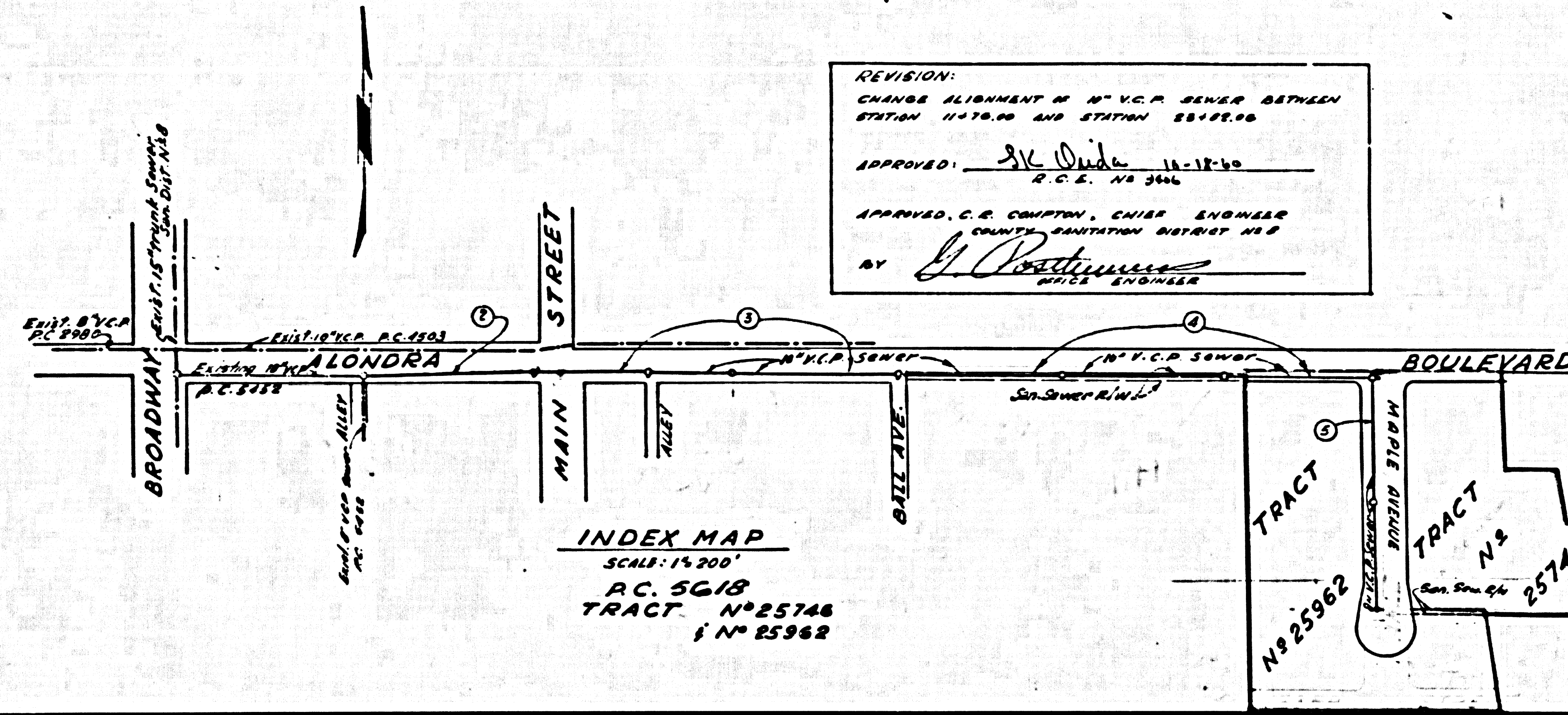
PROFILE ALIGNMENT AND GRADE OF P.C. 5618
 SANITARY SEWERS PAGE 1
 TO BE CONSTRUCTED IN U.N. 0354.13
 TRACTS N^o 25746
 & N^o 25962

CONNECTIONS CHARGES AS INDICATED
 Cathie B. Ready

BENCH MARK
 57.221 61.57 60.154
 C.T. SPIRE N.W. COR. ACROSS AVONDA
 1400 N. & BLVD. 12th N. & AVONDA BLVD.
 1432th S.W. COR. ST. BENE HALL BLDG.
 GARDENA BLVD. 1855 A.D.

REVISION:
 CHANGE ALIGNMENT OF N" V.C.P. SEWER BETWEEN
 STATION 1170.00 AND STATION 2315.00
 APPROVED: *J.K. Ouda* 11-18-60
 R.C.E. N^o 3446
 APPROVED, C.E. COMPTON, CHIEF ENGINEER
 COUNTY SANITATION DISTRICT N^o 2
 BY *J. D. Williams*
 CHIEF ENGINEER

- NOTES:
1. PROFILE STAKES ON THE PROPERTY LINE OR PROPERTY LINES PRODUCED AT RIGHT ANGLES TO THE SEWER LINE AT THE CENTER LINE OF EACH MANHOLE.
 2. NO REPRESENTATIVE OF THE COUNTY ENGINEER WILL SURVEY OR LAY OUT ANY PORTION OF THE WORK.
 3. THE OWNER OR HIS AUTHORIZED REPRESENTATIVE SHALL FURNISH THE COUNTY ENGINEER WITH GRADE SHEETS AND STATIONING FOR ALL HOUSE LATERALS AND Y BRANCHES AND SHALL PROVIDE STAKES FOR THEM AT THEIR PROPER LOCATIONS WITH STATIONING PLAINLY MARKED. ANY CHANGE IN LOCATION SHALL BE REQUESTED IN WRITING BY THE OWNER OR HIS REPRESENTATIVE.
 4. THE PRIVATE ENGINEER SHALL FURNISH THE HOUSE LATERAL DEPTH AT THE PROPERTY LINE BELOW THE TOP OF CURB ELEVATION FOR EACH HOUSE LATERAL ON THE GRADE SHEET.
 5. NO REVISIONS SHALL BE MADE IN THESE PLANS WITHOUT THE APPROVAL OF THE COUNTY ENGINEER.
 6. USE STANDARD MANHOLE FRAMES AND COVERS, S-117.
 7. USE STANDARD STRENGTH PIPE EXCEPT AS NOTED.
 8. USE CEMENT MORTAR OR "WEDGELOCK" OR "SPEED-SEAL" FOR ALL V.C.P. JOINTS PER SPEC. 203.2 & 8.
 9. RESURFACE ALL TRENCH WITHIN PAVED AREA TO MEET L.A. COUNTY ROAD DEPT. OR CALIF. STATE HIGHWAY REQUIREMENTS IN ACCORDANCE WITH PERMITS.
 10. ENCASE FOUR FEET OF SEWER AT POINTS OF INTERFERENCE WITH POLES, CASE III, S-117.
 11. HOUSE LATERALS TO BE CONSTRUCTED WITH INVERTS AT PROPERTY LINE 5 FEET BELOW CURB GRADE EXCEPT AS NOTED.
 12. ALL STRUCTURES SHALL BE BRICK SEWER STRUCTURES, S-104 EXCEPT AS NOTED.
 13. FOR ALLOWABLE LEAKAGE TEST USE FORMULA NO. 1, SPEC. 203.2, SEC. 54.
 14. MANHOLE TOPS IN UNIMPROVED RIGHTS-OF-WAY TO BE SIX INCHES ABOVE FINISHED GRADE.
 15. THE CONTRACTOR SHALL NOTIFY THE CONSTRUCTION & STORM DRAIN DIVISION BY TELEPHONE, MADISON 5-770, EXT. 201 AT LEAST TWENTY-FOUR HOURS BEFORE STARTING ANY WORK UNDER THIS CONTRACT.
 16. STANDARD SPECIFICATIONS DATED FEBRUARY 10, 1950 EARLY IN THE CONSTRUCTION OF THIS PROJECT.
 17. ALL THE LOCATIONS SHOWN FOR EXISTING SUBSTRUCTURES HAVE BEEN TAKEN FROM RECORDS AND THEIR CORRECTNESS AND COMPLETENESS IS IN NO WAY GUARANTEED. IT SHALL BE THE CONTRACTOR'S RESPONSIBILITY TO INDIVIDUALLY LOCATE ALL UNDERGROUND LINES OF EVERY NATURE WHETHER SHOWN HEREON OR NOT, AND AVOID THEM FROM DAMAGE. THE CONTRACTOR SHALL BEAR THE TRUE EXPENSE OF REMOVAL TO ANY LINE DAMAGED BY ANY OPERATION IN CONNECTION WITH THE PROSECUTION OF THIS WORK.

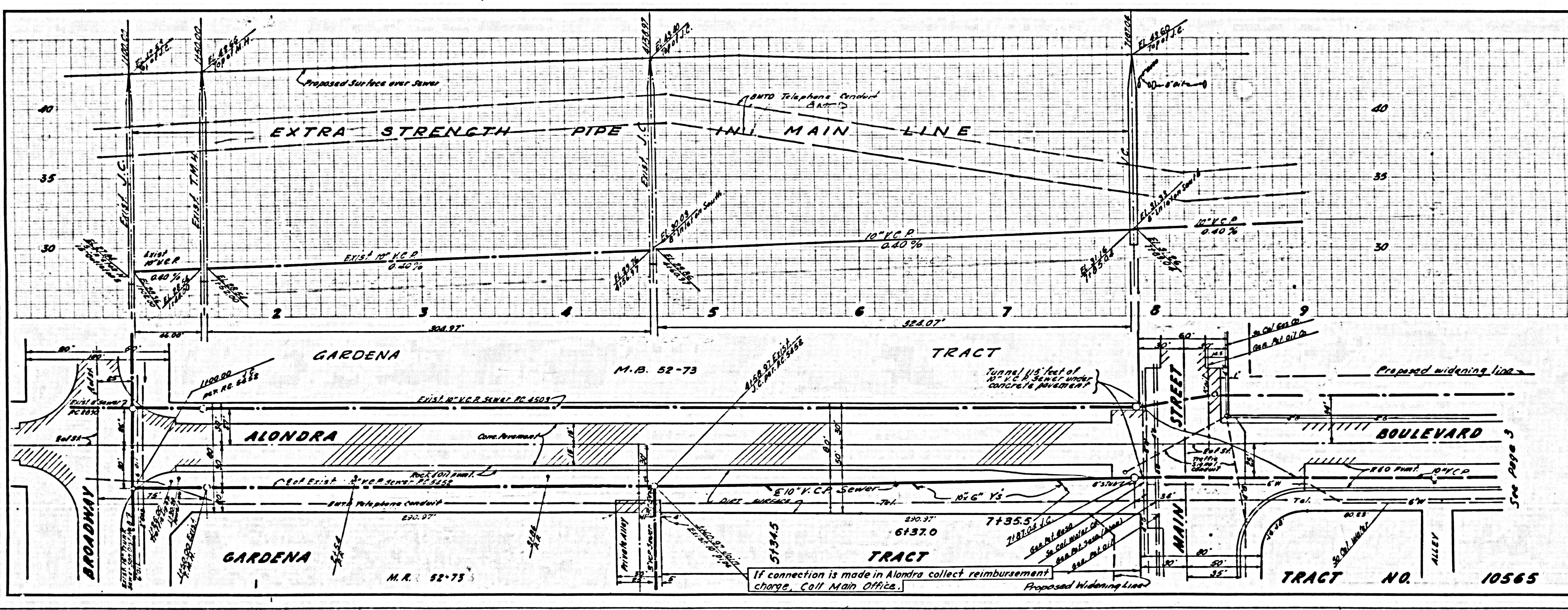


INDUSTRIAL WASTE DIVISION
 APPROVED: *J. K. Ouda* 8-3-60

PRIVATE CONTRACT NO. 5618
 W.S. 26
 3 SHEETS; 5 PAGES
 SCALE: VERT. 1"=4' HORIZ. 1"=40'
 JULY, 1960
 PREPARED IN THE OFFICES OF
BARCLAY-PEARSON CO. INC.
 BY: *Edward F. Pearson*
 REG. C. E. NO. 8783
 FOR LEGEND SEE PLAN NO. S-A-64

NOTE:
 GRADES TO WHICH THIS IMPROVEMENT IS TO BE CONSTRUCTED ARE SHOWN ON PLANS AND PROFILES. GRADE POINTS FOR TOP OF CURB, CENTER LINE OF STREETS OR CENTER LINE OF ALLEYS ARE SHOWN BY CIRCLES ON PROFILES. AT ALL POINTS BETWEEN DESIGNATED POINTS THE GRADE SHALL BE ESTABLISHED SO AS TO CONFORM TO A STRAIGHT LINE DRAWN BETWEEN SAID DESIGNATED POINTS.
 ELEVATIONS ARE IN FEET ABOVE U.S.C. & G.S. SEA LEVEL DATUM OF 1929.
 THIS DRAWING AND THE DATA HEREON ARE HEREBY MADE A PART OF THE SPECIFICATIONS.
 WORK SHALL BE CONSTRUCTED ACCORDING TO SPECIFICATIONS ON FILE IN THE OFFICE OF THE COUNTY ENGINEER AND SHALL BE PROSECUTED ONLY IN THE PRESENCE OF THE COUNTY ENGINEER.
 BEFORE WORK CAN BE STARTED, THE CONTRACTOR MUST OBTAIN A PERMIT TO EXCAVATE IN COUNTY STREETS FROM THE L.A. COUNTY ROAD DEPT., DISTRICT OFFICE NO. 3 AND PAY A FEE TO THE COUNTY ENGINEER'S ROOM 330 PINE AVENUE IN BURLINGAME, CALIF. BROADWAY SURVEY TO COVER THE COST OF CONSTRUCTION INSPECTION AND RECORD PLANS.
 APPROVAL OF THIS PLAN BY THE COUNTY OF LOS ANGELES DOES NOT CONSTITUTE A REPRESENTATION AS TO THE ACCURACY OF THE LOCATION OR THE EXISTENCE OR NON-EXISTENCE OF ANY UNDERGROUND UTILITY PIPE, OR STRUCTURE WITHIN THE LIMITS OF THIS PROJECT. THIS NOTE APPLIES TO ALL PAGES.
 IF WORK IS TO BE DONE IN A STATE HIGHWAY, A PERMIT MUST BE OBTAINED FROM THE STATE OF CALIFORNIA, DIVISION OF HIGHWAYS, 128 SOUTH SPRING STREET.

COUNTY OF LOS ANGELES, CALIFORNIA
 APPROVED, JOHN A. LAMBIE, COUNTY ENGINEER APPROVED, C.E. COMPTON, CHIEF ENGINEER
 CO. SAN. DIST. NO. 2
 BY: *E.E. Priddy* BY: *J. D. Williams*
 S.A.S. SANITATION ENGINEER OFFICE ENGINEER
 CHECKED BY: *J.K. Ouda* 8-3-60
 OFFICE OF COUNTY ENGINEER, REG. C. E. NO. 3406
 SUBMITTED *Jack C. Lansing*
 (PACIFIC VERDES-CENTRAL VALLEY REGIONAL ENGINEER)



P.C. 5618 PAGE 2

CONNECTIONS CHARGES AS INDICATED

30,013

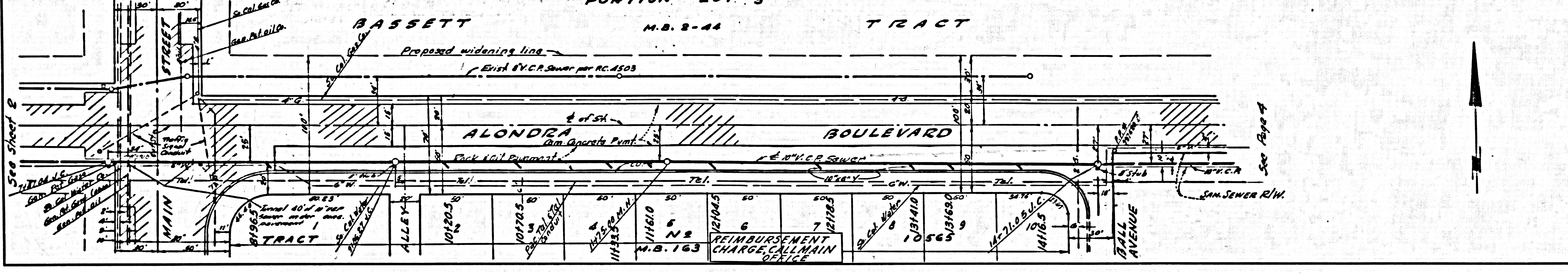
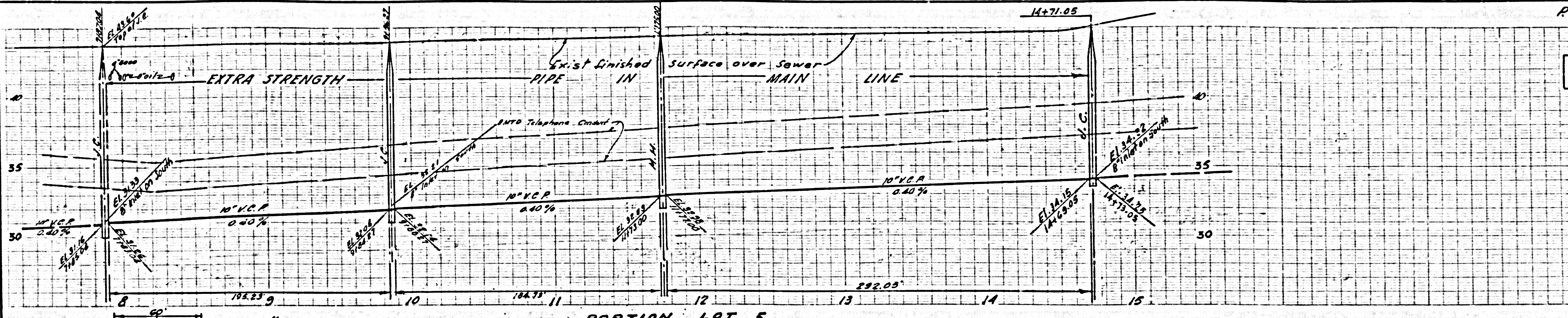
If connection is made in Alondra collect reimbursement charge, Call Main Office.

TRACT NO. 10565

7/2/60

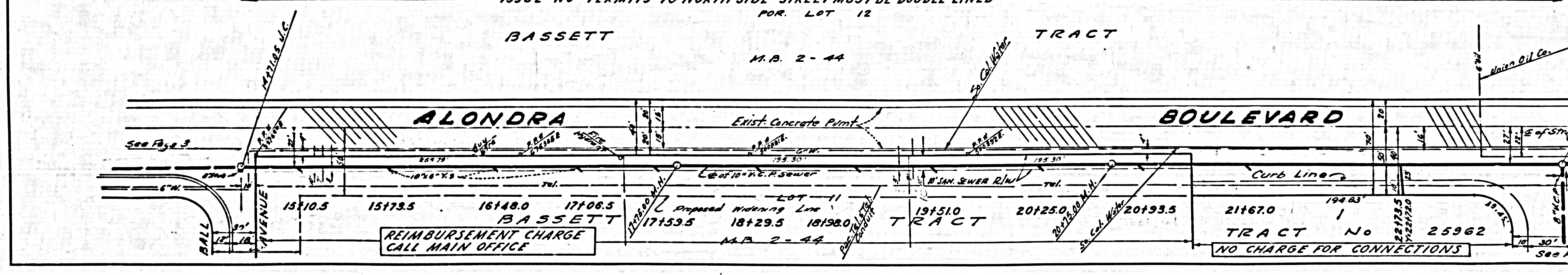
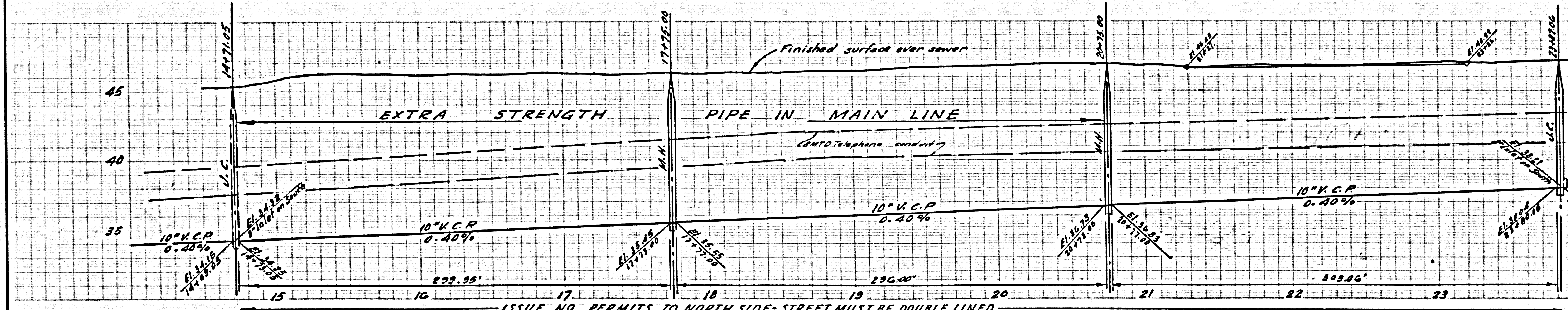
CONNECTIONS CHARGES AS INDICATED

30014



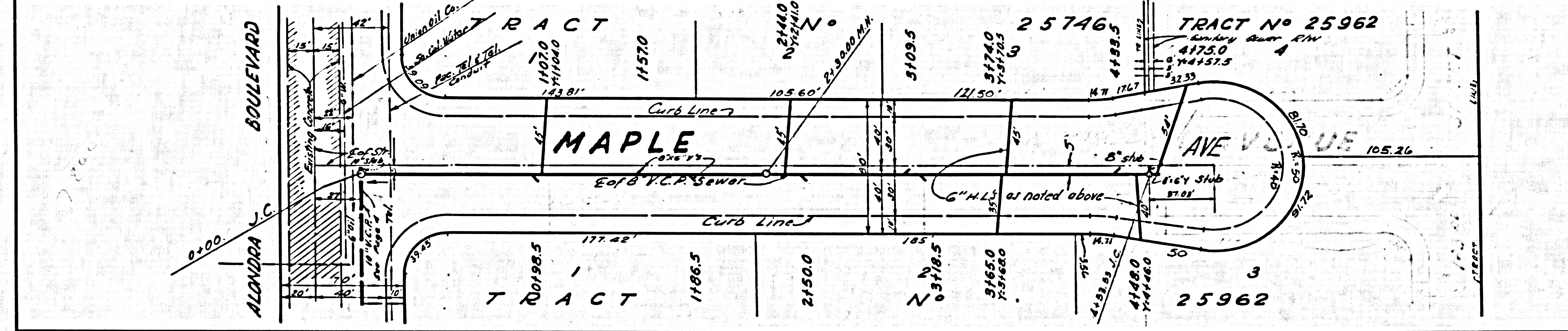
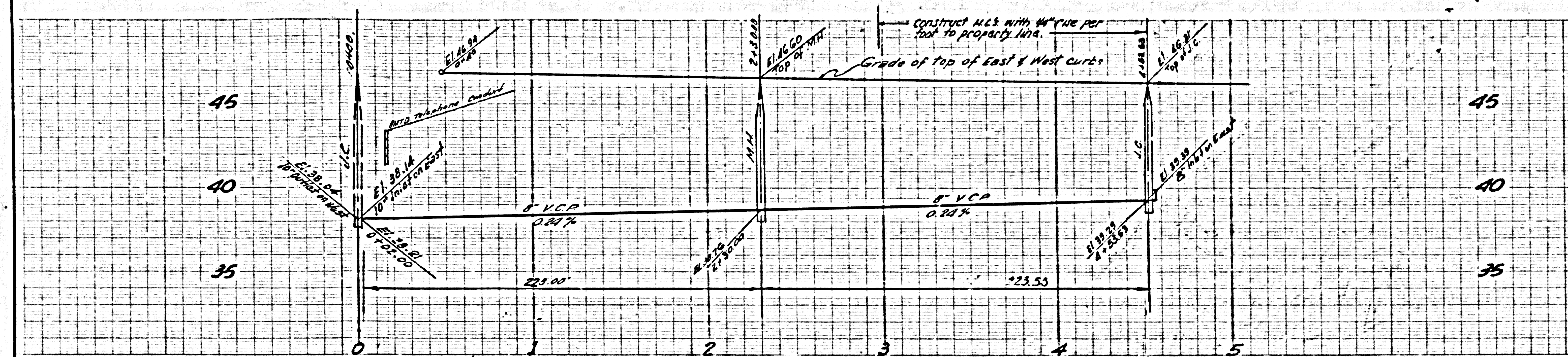
CONNECTIONS CHARGES AS INDICATED

30015



NO CHARGE FOR CONNECTIONS

30,016



Revision 11-27-60
 M.H. at station 4+52.50 moved to sta. 4+51.50
 Approved by

Edward J. Smith
 S.C.E. No. 7267

