

INDEX MAP  
SCALE: 1" = 400'

P.C. NO. 5625

BENCH MARK: L.A. County Rd. Dept. B.M. # 1591,  
Rd. Dept. B.M. tag near East edge Conc. Walk to Hse.  
#14565 Palm Drive at N.W. Corner of 7th Ave.  
± 25' North ± 45' West ± Intersection.  
Elevation: 401.958  
(WHITTIER QUAD, 1955)

### PUENTE BLDG. DIST. NO. 2

- NOTES**
- PROVIDE STAKES ON THE PROPERTY LINE OR PROPERTY LINES PRODUCED AT RIGHT ANGLES TO THE SEWER LINE AT 1'-4" CENTER LINE OF EACH MANHOLE.
  - NO REPRESENTATIVE OF THE COUNTY ENGINEER WILL SURVEY OR LAYOUT ANY PORTION OF THE WORK.
  - THE OWNER OR HIS AUTHORIZED REPRESENTATIVE SHALL FURNISH THE COUNTY ENGINEER WITH GRADE SHEETS AND STATIONING FOR ALL HOUSE LATERALS AND Y BRANCHES AND SHALL PROVIDE STAKES FOR THEM AT THEIR PROPER LOCATIONS WITH STATIONING AND PLAINLY MARKED. ANY CHANGE IN LOCATION SHALL BE REQUESTED IN WRITING BY THE OWNER OR HIS REPRESENTATIVE.
  - NO REVISIONS SHALL BE MADE IN THESE PLANS WITHOUT THE APPROVAL OF THE COUNTY ENGINEER.
  - USE STANDARD MANHOLE FRAMES AND COVERS, S.A.117
  - USE STANDARD STRENGTH PIPE
  - USE CHEMITE MORTAR OR "WEDGE-LOCK" OR "SPEED-SEAL" FOR ALL V.C.P. JOINTS PER SPEC'S, SPEC. 36 & 46.
  - RESURFACE ALL TRENCH WITHIN PAVED AREA TO MEET L.A. COUNTY ROAD DEPT., OR CALIF. STATE HIGHWAY DEPT. REQUIREMENTS IN ACCORDANCE WITH PERMITS.
  - INDICATE FOUR FEET OF SEWER AT POINTS OF INTERFERENCE WITH POLES, S & 172
  - ALL STRUCTURES SHALL BE BRICK SEWER STRUCTURES, S.A.104
  - FOR ALLOWABLE LEAKAGE TEST USE FORMULA NO. 1 SPEC'S, SEC. 14
  - MANHOLE TOPS IN UNIMPROVED RIGHTS-OF-WAY TO BE 6" ABOVE FINISHED GRADE.
  - THE PRIVATE ENGINEER SHALL FURNISH THE HOUSE LATERAL DEPTH AT THE PROPERTY LINE BELOW THE TOP OF CURB ELEVATION FOR EACH HOUSE LATERAL ON THE GRADE SHEET.
  - THE CONTRACTOR SHALL NOTIFY THE CONSTRUCTION DIVISION BY TELEPHONE MADISON 9-4767 SIXTEEN HOURS (8:00 AM) AT LEAST TWENTY-FOUR HOURS BEFORE STARTING ANY WORK UNDER THIS CONTRACT.
  - STANDARD SPECIFICATIONS DATED OCTOBER 10, 1960 APPLY IN THE CONSTRUCTION OF THIS PROJECT.

PROFILE ALIGNMENT AND GRADE OF P.C. 5625  
SANITARY SEWERS PAGE 1  
TO BE CONSTRUCTED IN JN 0354.20

### PALM AVENUE FOR PALM AVENUE SCHOOL SITE PRIVATE CONTRACT NO. 5625

W.S.37  
1 SHEETS, 2 PAGES  
SCALE: 1" = 48' OCTOBER, 1960

PREPARED IN THE OFFICES OF  
KISTNER, WRIGHT & WRIGHT  
ARCHITECTS & ENGINEERS  
By *John Van der Brink*  
REG. C. E. NO. 8617  
FOR LEGEND SEE PLAN NO. S-A-64

**NOTES**

GRADES TO WHICH THIS IMPROVEMENT IS TO BE CONSTRUCTED ARE SHOWN ON PLANS AND PROFILE GRADE POINTS FOR TOP OF CURB, CENTER LINE OF STREETS, OR CENTER LINE OF ALLEYS ARE SHOWN BY CIRCLES OR PROFILES AT ALL POINTS BETWEEN DESIGNATED POINTS THE GRADE SHALL BE ESTABLISHED SO AS TO CONFORM TO A SMOOTH LINE DRAWN BETWEEN SAID DESIGNATED POINTS.

ELEVATIONS ARE IN FEET ABOVE U.S.C. & G.S. MEAN SEA LEVEL DATUM OF 1929.

THIS DRAWING AND THE DATA HEREON ARE HEREBY MADE A PART OF THE SPECIFICATIONS.

WORK SHALL BE CONSTRUCTED ACCORDING TO SPECIFICATIONS ON FILE IN THE OFFICE OF THE COUNTY ENGINEER AND SHALL BE INSPECTED ONLY IN THE PRESENCE OF THE COUNTY ENGINEER.

BEFORE WORK CAN BE STARTED, THE CONTRACTOR MUST OBTAIN A PERMIT TO EXCAVATE IN COUNTY STREETS FROM THE L.A. COUNTY ROAD DEPT. (SPECS. 101 & 102) AND PERMITS FROM THE COUNTY ENGINEER, ROOM 324 PALM AVENUE, BLDG. 138 SO BROADWAY SUFFICIENT TO COVER THE COST OF CONSTRUCTION INSPECTION AND RECORD PLANS.

APPROVAL OF THIS PLAN BY THE COUNTY OF LOS ANGELES DOES NOT CONSTITUTE A REPRESENTATION AS TO THE ACCURACY OF THE LOCATION OR OF THE EXISTENCE OR NON-EXISTENCE OF ANY UNDERGROUND UTILITY PIPE, OR STRUCTURE WITHIN THE LIMITS OF THIS PROJECT. THIS NOTE APPLIES TO ALL PAGES.

IF WORK IS TO BE DONE IN A STATE HIGHWAY, A PERMIT MUST BE OBTAINED FROM THE STATE OF CALIFORNIA, DIVISION OF HIGHWAYS, 136 SOUTH SPRING STREET.

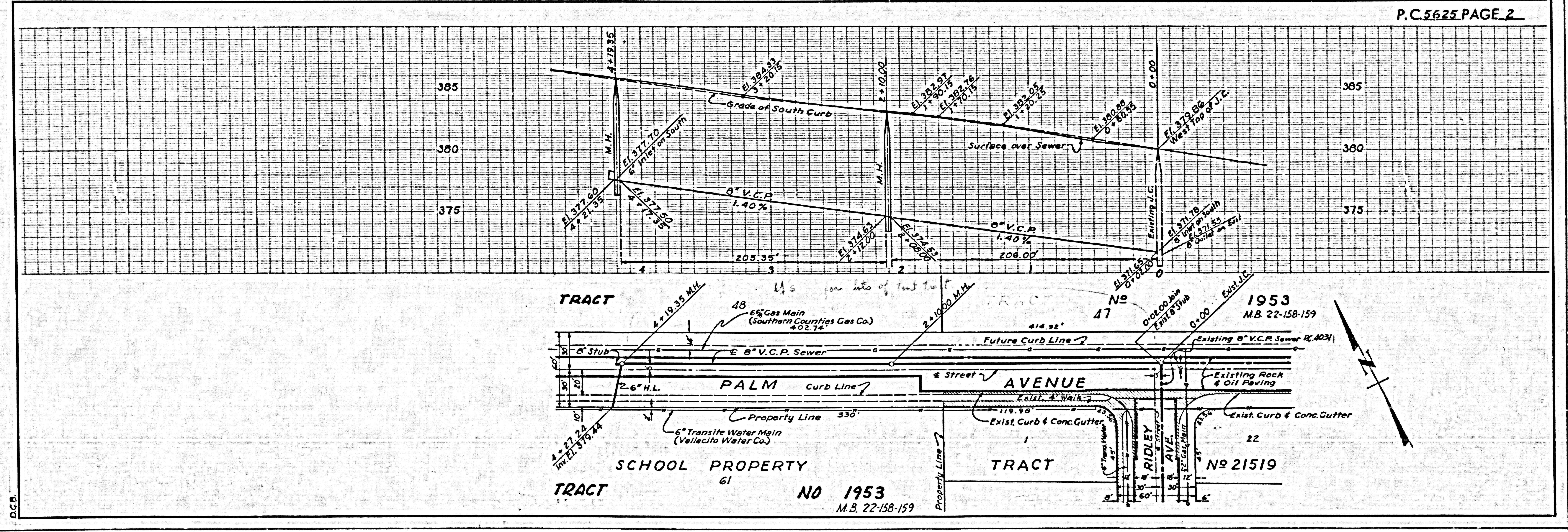
COUNTY OF LOS ANGELES, CALIFORNIA

APPROVED, JOHN A. LAMBE, COUNTY ENGINEER  
APPROVED, C.R. CAMPBELL, CHIEF ENGINEER  
CO. SAN. DIST. NO. 15

BY \_\_\_\_\_ SANITATION ENGINEER  
BY \_\_\_\_\_ OFFICE ENGINEER

CHECKED BY \_\_\_\_\_  
OFFICE OF COUNTY ENGINEER, REG. C. E. NO. \_\_\_\_\_

SUBMITTED \_\_\_\_\_  
SAN DIMAS REGIONAL ENGINEER



P.C. 5625 PAGE 2

DWM - GENERAL - AVENUE - SCHOOL SITE - 11/12/60

D.C.B.