

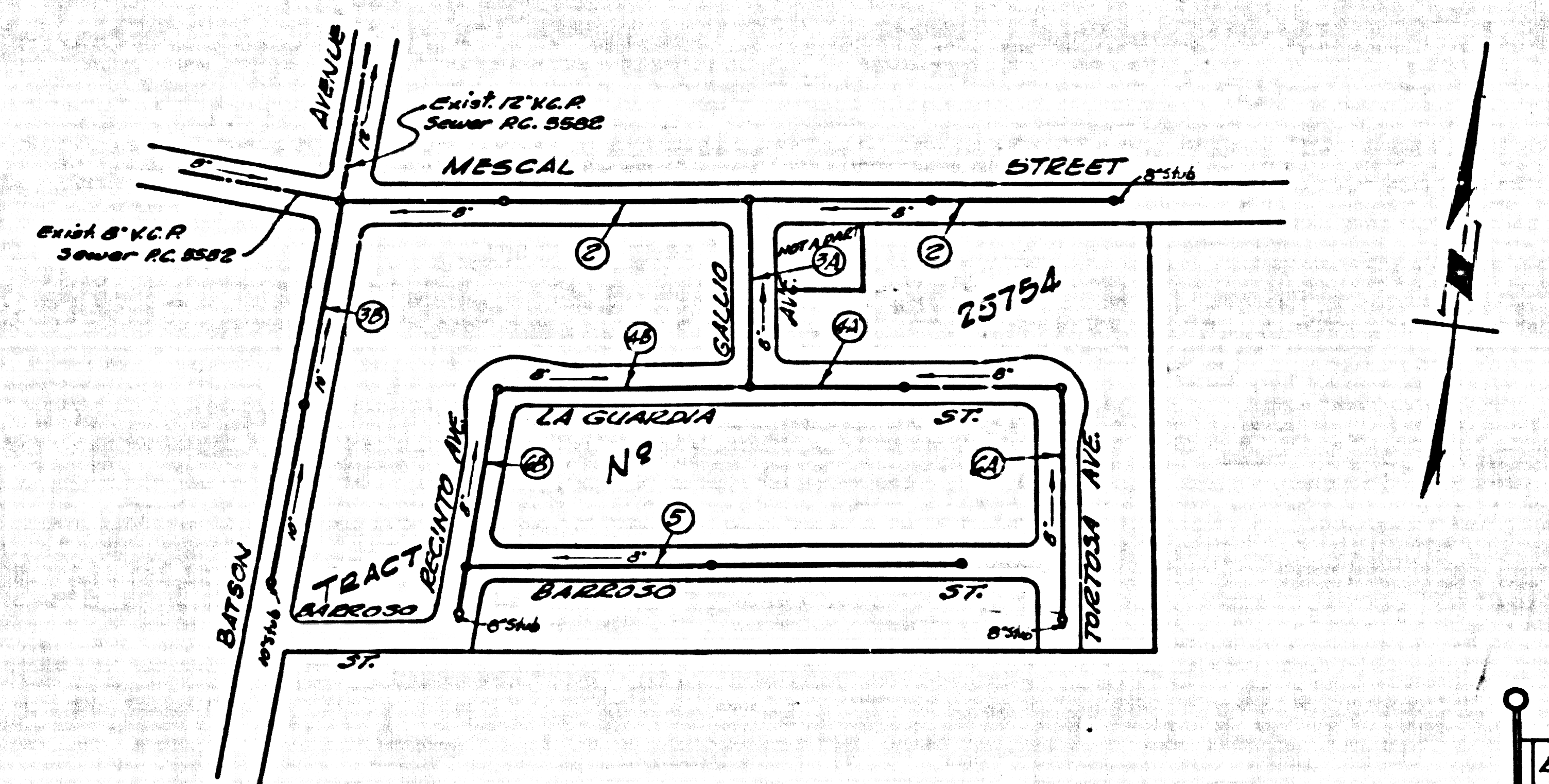
PUEENTE BLDG. DIST. NO. 2

PROFILE ALIGNMENT AND GRADE OF P.C. 5626
 SANITARY SEWERS PAGE 1
 TO BE CONSTRUCTED IN J.M. 0354-21

TRACT No 25754
 PRIVATE CONTRACT NO. 5626

W.S. 38
 3 SHEETS: 6 PAGES
 SCALE: HORIZ. 1" = 40' VERT. 1" = 4'
 JULY, 1960
 PREPARED IN THE OFFICES OF
 HANS C. THOMSEN
 BY: Hans C. Thomsen
 REG. C. E. NO. 8244
 FOR LEGEND SEE PLAN NO. S-A-64

- NOTES:
1. PROVIDE STAKES ON THE PROPERTY LINE OR PROPERTY LINES PRODUCED AT RIGHT ANGLES TO THE SEWER LINE AT THE CENTER LINE OF EACH MANHOLE.
 2. NO REPRESENTATIVE OF THE COUNTY ENGINEER WILL SURVEY OR LAY OUT ANY PORTION OF THE WORK.
 3. THE OWNER OR HIS AUTHORIZED REPRESENTATIVE SHALL FURNISH THE COUNTY ENGINEER WITH GRADE SHEET AND STATIONING FOR ALL HOUSE LATERALS AND Y BRANCHES AND SHALL PROVIDE STAKES FOR THEM AT THESE PROPER LOCATIONS WITH STATIONING PLAINLY MARKED. ANY CHANGE IN LOCATION SHALL BE REQUESTED IN WRITING BY THE OWNER OR HIS REPRESENTATIVE.
 4. THE PRIVATE ENGINEER SHALL FURNISH THE HOUSE LATERAL DEPTH AT THE PROPERTY LINE BELOW THE TOP OF CURB ELEVATION FOR EACH HOUSE LATERAL ON THE GRADE SHEET.
 5. NO REVISIONS SHALL BE MADE IN THESE PLANS WITHOUT THE APPROVAL OF THE COUNTY ENGINEER.
 6. USE STANDARD MANHOLE FRAMES AND COVERS, S-117
 7. USE STANDARD STRENGTH PIPE EXCEPT AS NOTED.
 8. USE CEMENT MORTAR OR "WEDG-LOC" OR "SPEED-SEAL" FOR ALL V.C.P. JOINTS PER SPEC'S, SEC. 16 6.
 9. REFERENCE ALL TRENCH WIDTHS TO MEET L.A. COUNTY ROAD DEPT. OR CALIF. STATE HIGHWAY REQUIREMENTS IN ACCORDANCE WITH PERMITS.
 10. ENCASE FOUR FEET OF SEWER AT POINTS OF INTERFERENCE WITH POLES, CASE III, S-172.
 11. HOUSE LATERALS TO BE CONSTRUCTED WITH INVERTS AT PROPERTY LINE 4 FEET BELOW CURB GRADE EXCEPT AS NOTED.
 12. ALL STRUCTURES SHALL BE BRICK SEWER STRUCTURES, S-104.
 13. FOR ALLOWABLE LEAKAGE TEST USE FORMULA NO. 1, SPEC'S, SEC. 64.
 14. MANHOLE TOPS IN UNIMPROVED RIGHTS-OF-WAY TO BE SIX INCHES ABOVE FINISHED GRADE.
 15. THE CONTRACTOR SHALL NOTIFY THE CONSTRUCTION DIVISION BY TELEPHONE, MADISON 9-4444, 24 HOURS AT LEAST TWENTY-FOUR HOURS BEFORE STARTING ANY WORK UNDER THIS CONTRACT.
 16. STANDARD SPECIFICATIONS DATED JAN. 1, 1960 APPLY IN THE CONSTRUCTION OF THIS PROJECT.

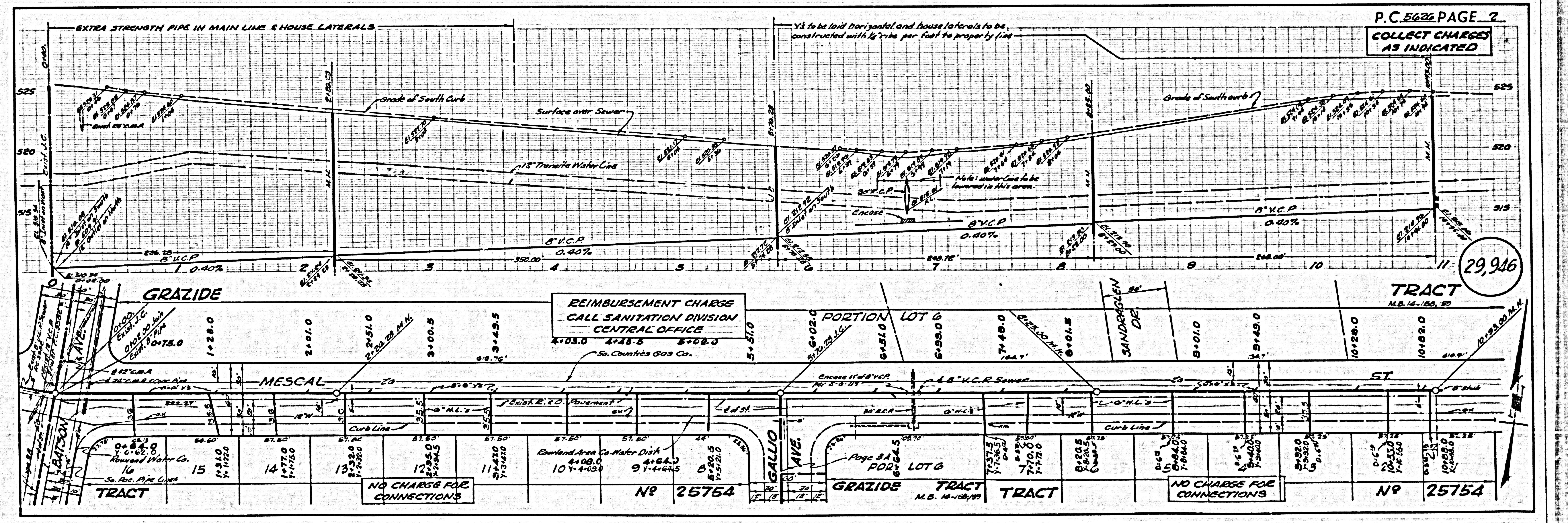


INDEX MAP
 P.C. 5626
 SCALE 1" = 200'

B.M. S.G. 1635 L.A. Co. Rd. DEPT.
 B.M. TAG NEAR W'LY EDGE OF
 CIRCULAR CONCRETE STORAGE TANK
 2' ABOVE GROUND LEVEL ON N.E. LY.
 CORNER FULLERTON RD. & MESCAL ST.
 50' NLY. 630' ELY. & INTERSECTION
 (OTTERBEIN QUAD) ELEV. 534.905 (1955)

COLLECT CHARGES
 AS INDICATED
 O.R. Olsen 7/2/60

NOTES:
 GRADES TO WHICH THIS IMPROVEMENT IS TO BE CONSTRUCTED ARE SHOWN ON PLANS AND PROFILES. GRADE POINTS FOR TOP OF CURB, CENTER LINE OF STREETS OR CENTER LINE OF ALLEYS ARE SHOWN BY CIRCLES ON PROFILES. AT ALL POINTS BETWEEN DESIGNATED POINTS THE GRADE SHALL BE ESTABLISHED SO AS TO CONFORM TO A STRAIGHT LINE DRAWN BETWEEN SAID DESIGNATED POINTS.
 ELEVATIONS ARE IN FEET ABOVE U.S.C. & G.S. SEA LEVEL DATUM OF 1929.
 THIS DRAWING AND THE DATA HEREON ARE HEREBY MADE A PART OF THE SPECIFICATIONS.
 BEFORE WORK CAN BE STARTED THE CONTRACTOR MUST OBTAIN A PERMIT TO EXCAVATE IN COUNTY STREETS FROM THE L. A. COUNTY ROAD DEPT., DISTRICT OFFICE NO. 10, AND PAY A FEE TO THE COUNTY ENGINEER, ROOM 204 PAB. AMERICAN BUILDING, 253 SO. BROADWAY, SAN FRANCISCO TO COVER THE COST OF CONSTRUCTION INSPECTION AND RECORD PLANS.
 APPROVAL OF THIS PLAN BY THE COUNTY OF LOS ANGELES DOES NOT CONSTITUTE A REPRESENTATION AS TO THE ACCURACY OF THE LOCATION OR THE EXISTENCE OR NON-EXISTENCE OF ANY UNDERGROUND UTILITY PIPE, OR STRUCTURE WITHIN THE LIMITS OF THIS PROJECT. THIS NOTE APPLIES TO ALL PAGES.
 IF WORK IS TO BE DONE IN A STATE HIGHWAY, A PERMIT MUST BE OBTAINED FROM THE STATE OF CALIFORNIA, DIVISION OF HIGHWAYS, 126 SOUTH SPRING STREET.
 COUNTY OF LOS ANGELES, CALIFORNIA
 APPROVED, JOHN A. LAMBE, COUNTY ENGINEER APPROVED, C. R. COMPTON, CHIEF ENGINEER
 CO. SAN. DIST. NO. 21
 BY: [Signature] BY: [Signature]
 CHECKED BY: [Signature] 7-26-60
 OFFICE OF COUNTY ENGINEER, R.O. C. & L. NO. 2406
 SUBMITTED BY: H.C. Poindexter 9-22-60
 SAN DIMAS REGIONAL ENGINEER



P.C. 5626 PAGE 2
 COLLECT CHARGES
 AS INDICATED

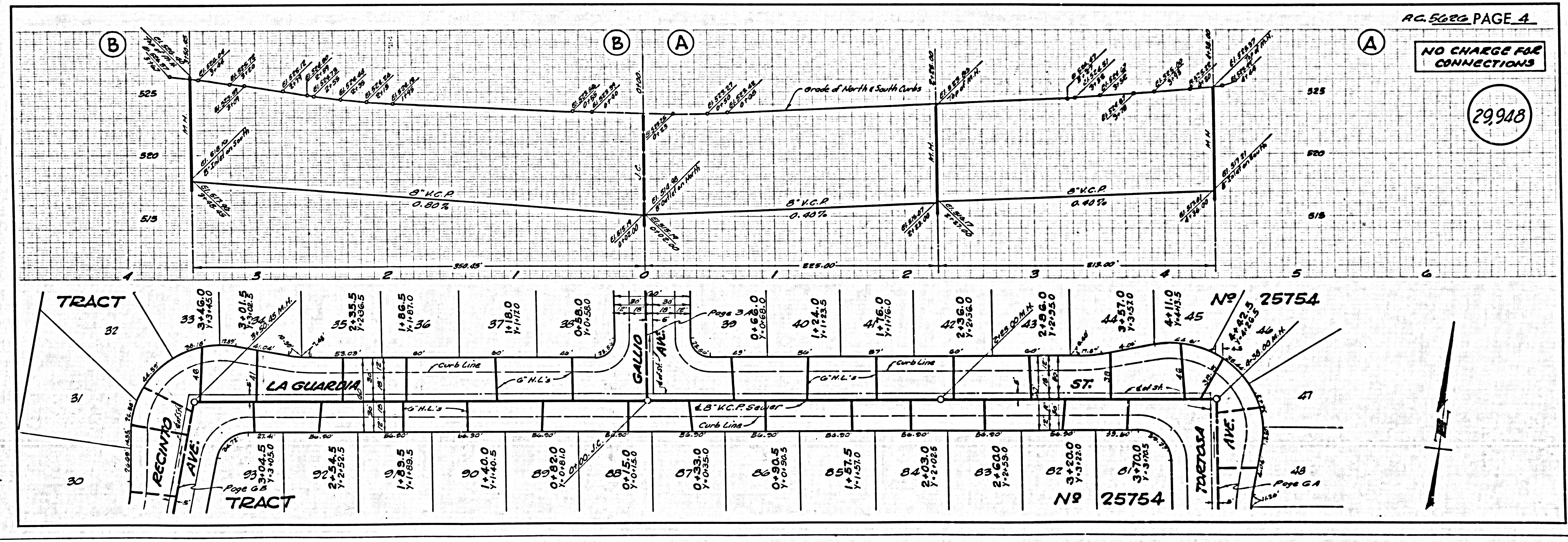
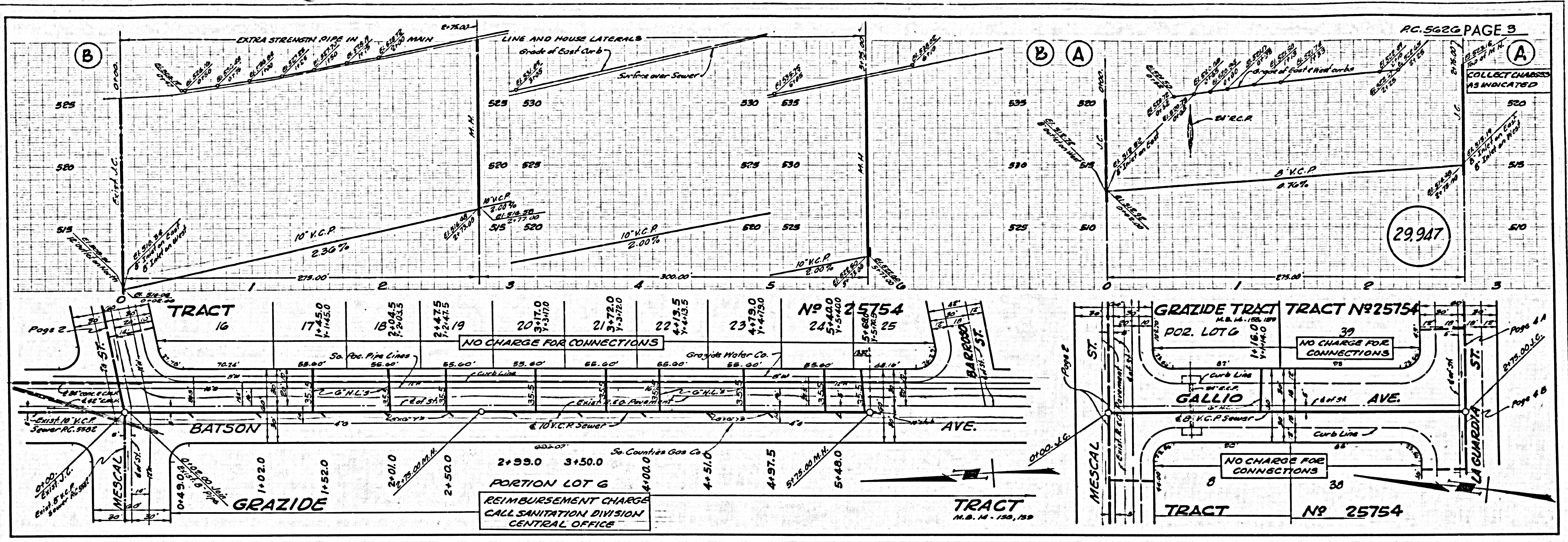
29,916

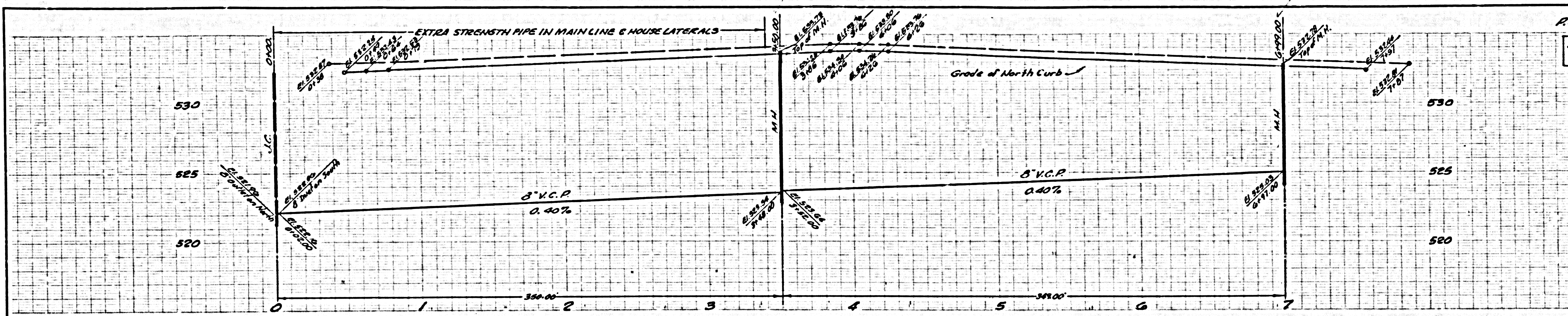
NO CHARGE FOR CONNECTIONS

NO CHARGE FOR CONNECTIONS

NO 25754

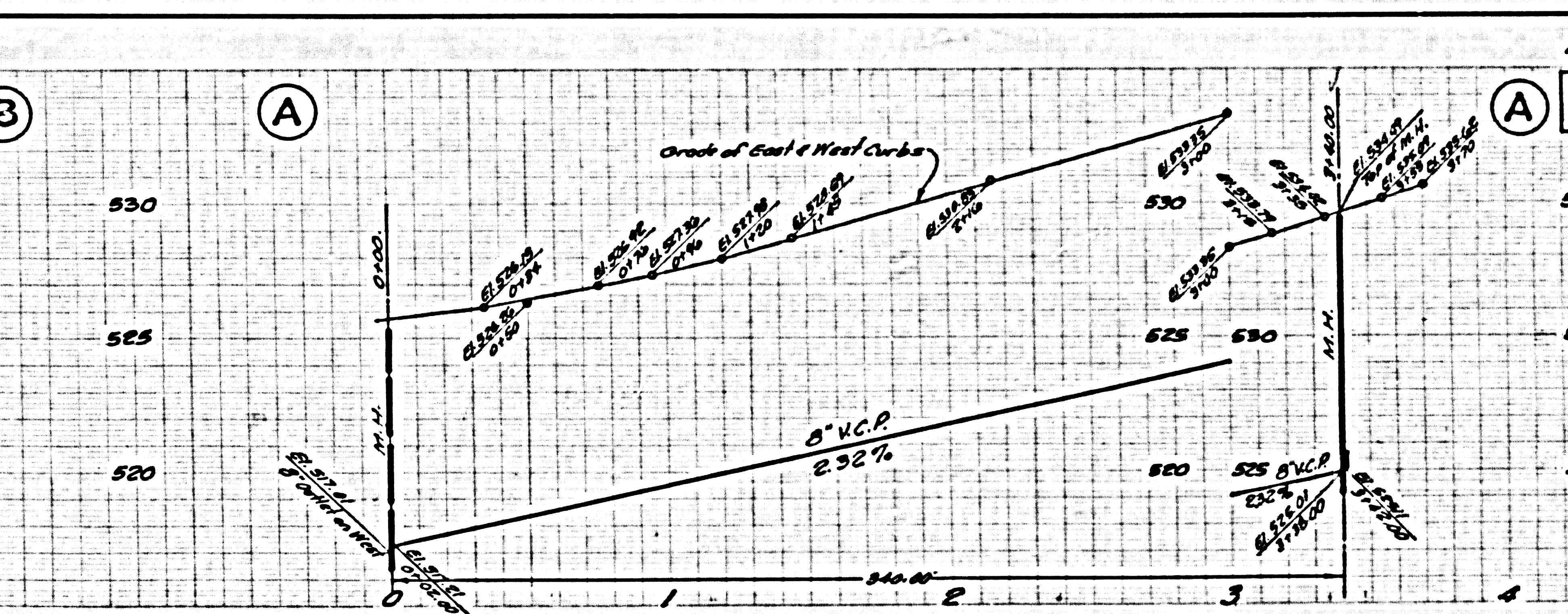
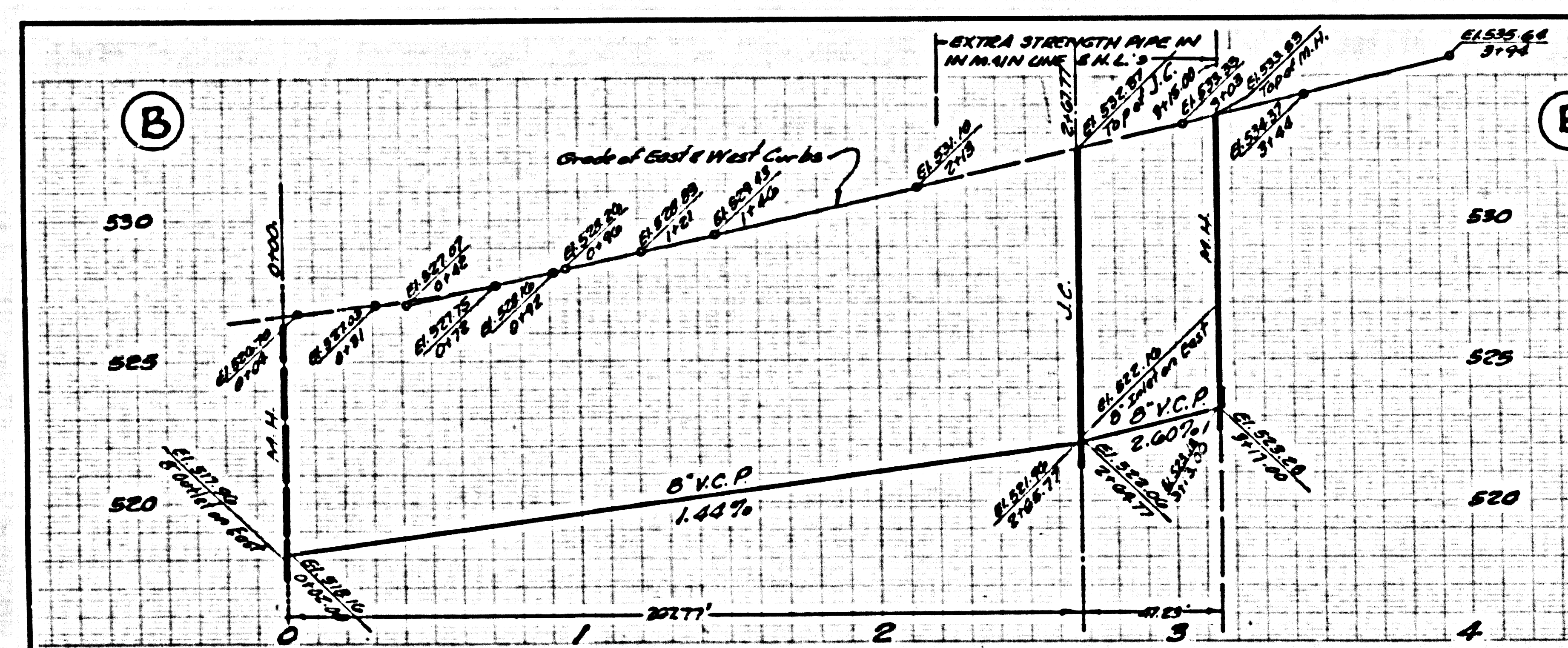
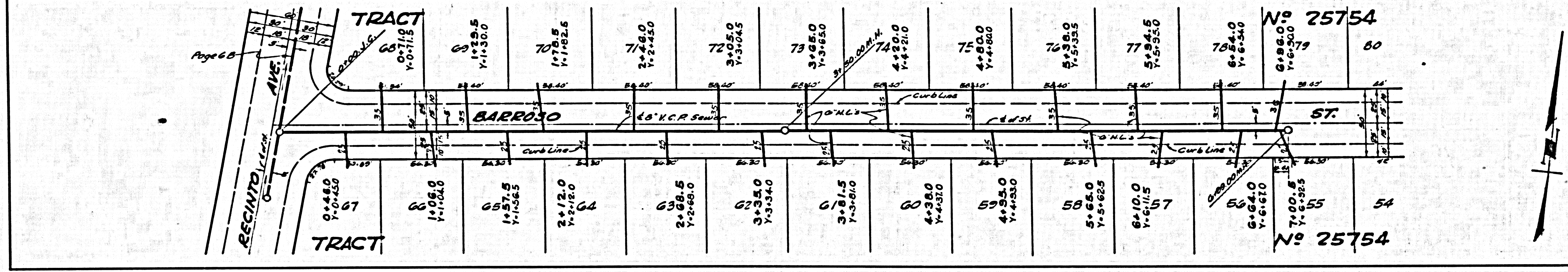
NO 25754





RC 5620 PAGE 5
NO CHARGE FOR CONNECTIONS

29,949



RC 5620 PAGE 6
NO CHARGE FOR CONNECTIONS

29,950

