

BENCH MARK
 A STANDARD COUNTY SURVEYORS MONUMENT SET IN CONCRETE 10' BELOW THE SURFACE, MARKED "S.M. 1181 1952" E. 63' AND LOCATED 8.5' WEST OF THE WEST EDGE OF POMONA BLVD AND 0.5' EAST OF THE EAST EDGE OF VALLEY BLVD IN A WELL PROTECTED BY A CAST IRON COVER MARKED COUNTY SURVEY 023 MONUMENT F.B. 1576-82.
 1952 ADJUSTED ELEVATION 684.191

- 17(a) No construction will be permitted in filled areas unless acceptable geologic information is submitted to the construction division of the county engineers department that relative compaction is greater than 80%.
- (b) If compaction is less than 80%, the sewer must be cradled as shown on the plans per 58-166.
- (c) If compaction is greater than 80% neither cradling nor special manhole bases will be required, however, joint compound or "wedge-lock" or "speed seal" must be substituted for cement mortar for all joints in filled areas.

SAN DIMAS BLDG. DIST. NO. 10

- NOTES**
- PROVIDE STAKES ON THE PROPERTY LINE OR PROPERTY LINES PRODUCED AT RIGHT ANGLES TO THE SEWER LINE AT THE CENTER LINE OF EACH MANHOLE.
 - NO REPRESENTATIVE OF THE COUNTY ENGINEER WILL SURVEY OR LAY OUT ANY PORTION OF THE WORK.
 - THE OWNER OR HIS AUTHORIZED REPRESENTATIVE SHALL FURNISH THE COUNTY ENGINEER WITH GRADE SHEETS AND STATIONING FOR ALL HOUSE LATERALS AND Y BRANCHES AND SHALL PROVIDE STAKES FOR THEM AT THEIR PROPER LOCATIONS WITH STATIONING PLAINLY MARKED. ANY CHANGE IN LOCATION SHALL BE REQUESTED IN WRITING BY THE OWNER OR HIS REPRESENTATIVE.
 - THE PRIVATE ENGINEER SHALL FURNISH THE HOUSE LATERAL DEPTH AT THE PROPERTY LINE BELOW THE TOP OF CURB ELEVATION FOR EACH HOUSE LATERAL ON THE GRADE SHEET.
 - NO REVISIONS SHALL BE MADE IN THESE PLANS WITHOUT THE APPROVAL OF THE COUNTY ENGINEER.
 - USE STANDARD MANHOLE FRAMES AND COVERS, 5-117.
 - USE STANDARD STRENGTH PIPE EXCEPT AS NOTED.
 - USE CEMENT MORTAR OR "WEDGE-LOCK" OR "SPEED-SEAL" FOR ALL V.C.P. JOINTS PER SPECS. SECS. 16 & 18.
 - RESURFACE ALL TRENCH WITHIN PAVED AREA TO MEET L.A. COUNTY ROAD DEPT. OR CALIF. STATE HIGHWAY REQUIREMENTS IN ACCORDANCE WITH PERMITS.
 - ENCASE FOUR FEET OF SEWER AT POINTS OF INTERFERENCE WITH POLES, CASE III, 5-172.
 - HOUSE LATERALS TO BE CONSTRUCTED WITH INVERTS AT PROPERTY LINE 6 FEET BELOW CURB GRADE.
 - ALL STRUCTURES SHALL BE BRICK SEWER STRUCTURES, 5-104.
 - FOR ALLOWABLE LEAKAGE TEST USE FORMULA NO. 1 SPECS. SEC. 64.
 - MANHOLE TOPS IN UNIMPROVED RIGHTS-OF-WAY TO BE SIX INCHES ABOVE FINISHED GRADE.
 - THE CONTRACTOR SHALL NOTIFY THE CONSTRUCTION DIVISION BY TELEPHONE, MADRON 5-410, 24 HOURS IN ADVANCE OF ANY WORK UNDER THIS CONTRACT.
 - STANDARD SPECIFICATIONS DATED 11/1960 APPLY IN THE CONSTRUCTION OF THIS PROJECT.

PROFILE ALIGNMENT AND GRADE OF **P.C.5629**
SANITARY SEWERS PAGE 1
 TO BE CONSTRUCTED IN **J.N.0354.24**
TRACT NO. 24726
PRIVATE CONTRACT NO. 5629

W.S. 39
 3 SHEETS; 6 PAGES
 SCALE: VERT. 1" = 4' HORIZ. 1" = 40'
 SEPTEMBER, 1960
 PREPARED IN THE OFFICES OF
BAKER, PAFFORD AND ASSOC.
 1932 WEST FIFTH AVE. POMONA, CALIF.
 BY: William S. Barrett
 REG. C. E. NO. 9823

30239

FOR LEGEND SEE PLAN NO. S-A-64

GRADES TO WHICH THIS IMPROVEMENT IS TO BE CONSTRUCTED ARE SHOWN ON PLANS AND PROFILES. GRADE POINTS FOR TOP OF CURBS, CENTER LINE OF STREETS OR CENTER LINE OF ALLEYS ARE SHOWN BY CIRCLES ON PROFILES. AT ALL POINTS BETWEEN DESIGNATED POINTS THE GRADE SHALL BE ESTABLISHED SO AS TO CONFORM TO A STRAIGHT LINE DRAWN BETWEEN SAID DESIGNATED POINTS.

ELEVATIONS ARE IN FEET ABOVE U.S.C. & G.S. SEA LEVEL DATUM OF 1929.

THIS DRAWING AND THE DATA HEREON ARE HEREBY MADE A PART OF THE SPECIFICATIONS. WORK SHALL BE CONSTRUCTED ACCORDING TO SPECIFICATIONS ON FILE IN THE OFFICE OF THE COUNTY ENGINEER AND SHALL BE PROSECUTED ONLY IN THE PRESENCE OF THE COUNTY ENGINEER.

WORK CAN BE STARTED THE CONTRACTOR MUST OBTAIN A PERMIT TO EXCAVATE IN COUNTY STREETS FROM THE L.A. COUNTY ROAD DEPT., DISTRICT OFFICE NO. 10, AND PAY A FEE TO THE COUNTY ENGINEER ROOM 322 SAN AMERICAN BUILDING, 321 SO. BROADWAY SUFFICIENT TO COVER THE COST OF CONSTRUCTION INSPECTION AND RECORD PLANS.

APPROVAL OF THIS PLAN BY THE COUNTY OF LOS ANGELES DOES NOT CONSTITUTE A REPRESENTATION AS TO THE ACCURACY OF THE LOCATION OR OF THE EXISTENCE OR NON-EXISTENCE OF ANY UNDERGROUND UTILITY PIPE OR STRUCTURE WITHIN THE LIMITS OF THIS PROJECT. THIS NOTE APPLIES TO ALL PAGES.

IF WORK IS TO BE DONE IN A STATE HIGHWAY, A PERMIT MUST BE OBTAINED FROM THE STATE OF CALIFORNIA, DIVISION OF HIGHWAYS, 128 SOUTH SPRING STREET.

COUNTY OF LOS ANGELES, CALIFORNIA

APPROVED, JOHN A. LAMBIE, COUNTY ENGINEER

APPROVED, G.R. CAMPBELL, CHIEF ENGINEER

BY: W.S. Barrett BY: H. Williams
 ASST. SANITATION ENGINEER OFFICE ENGINEER

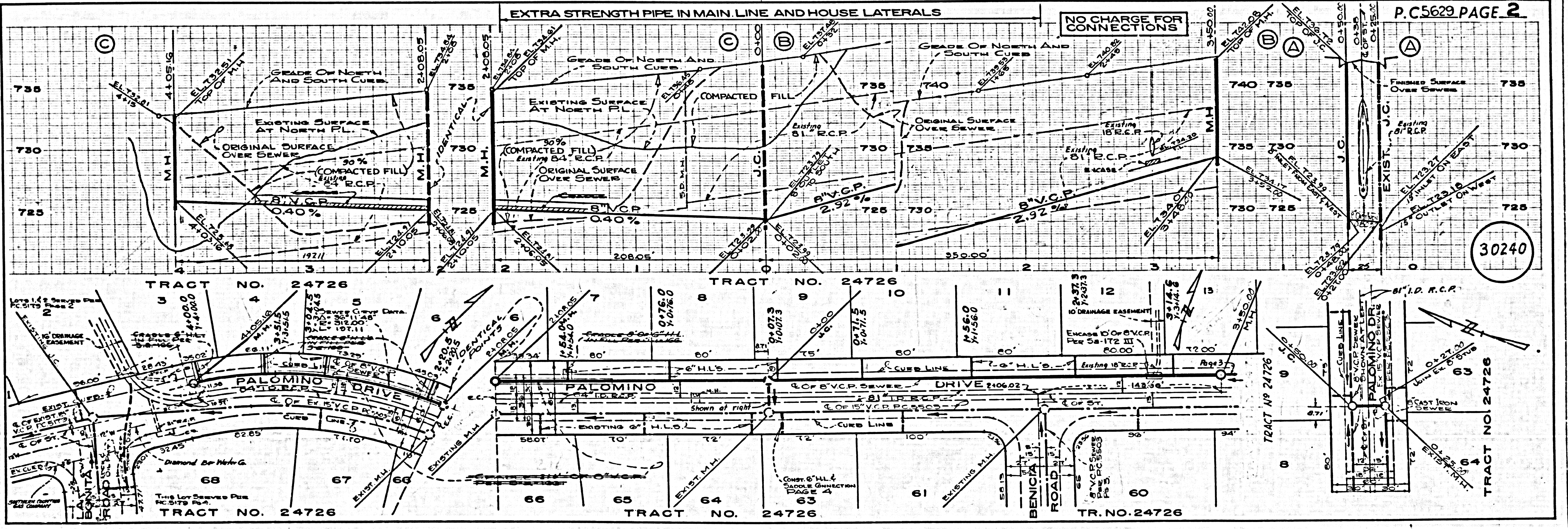
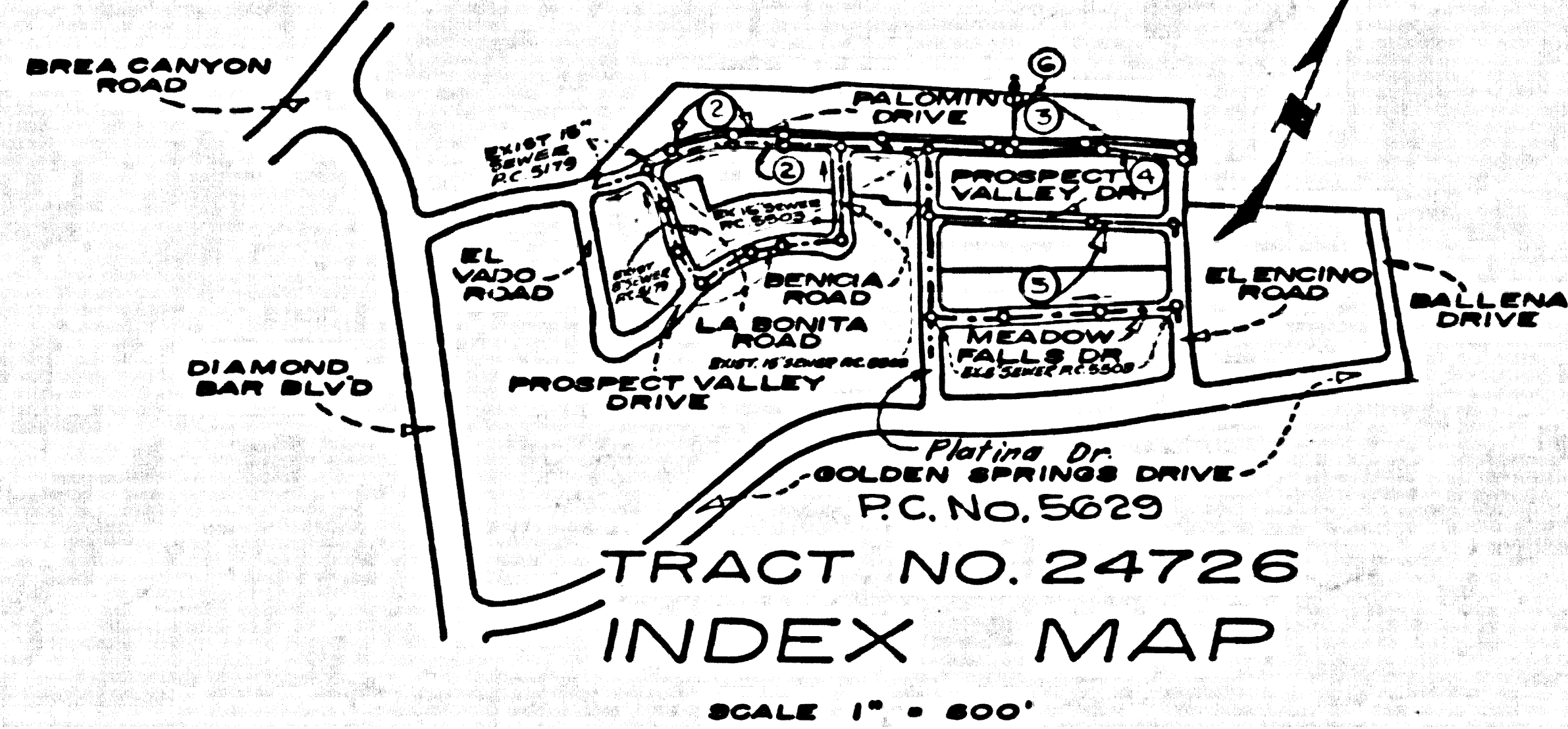
CHECKED BY: W. O. Oakes 10-25-60
 OFFICE OF COUNTY ENGINEER, REG. C. E. NO. 9466

SUBMITTED W.C. Reinhardt
 SAN DIMAS REGIONAL ENGINEER

NO CHARGE FOR CONNECTIONS

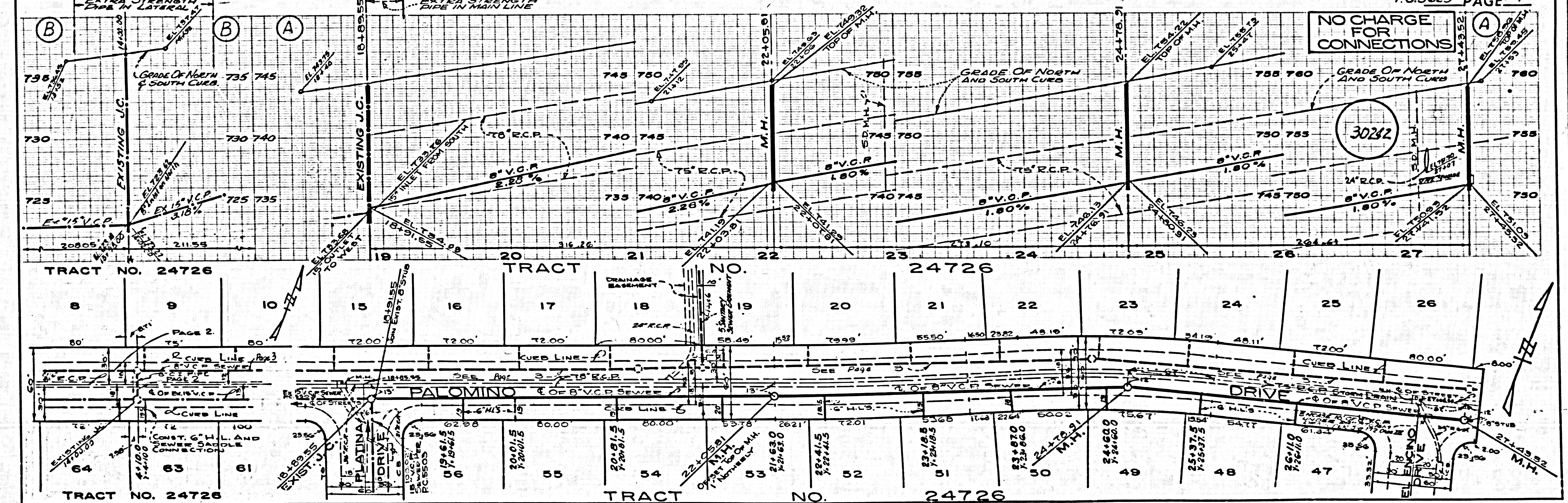
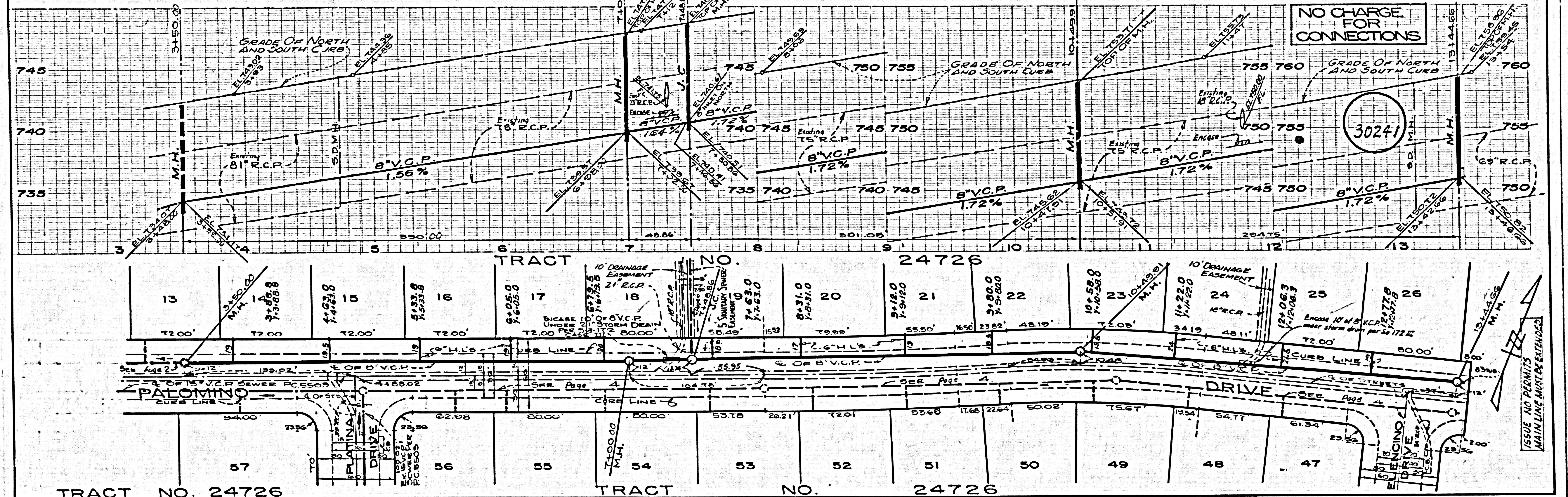
LOTS 1, 2, & 68 SERVED BY P.C. 5179.

LOTS 57 THRU 62 AND LOTS 64 THRU 67 SERVED BY P.C. 5503.



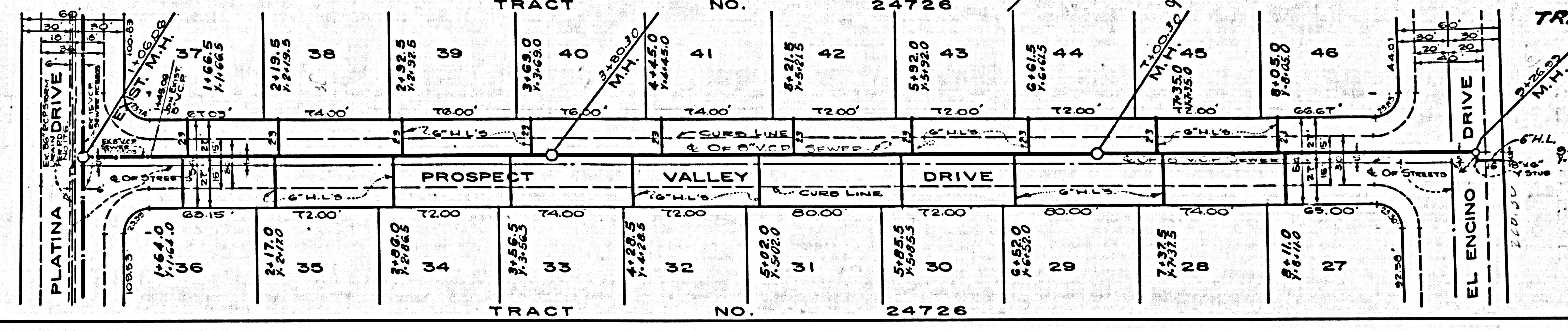
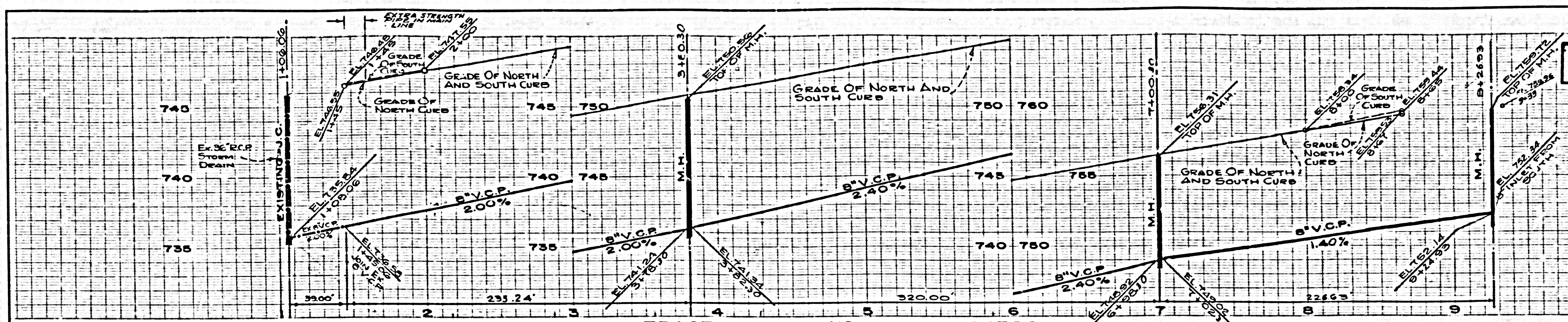
30240

P.C.5629 PAGE 2



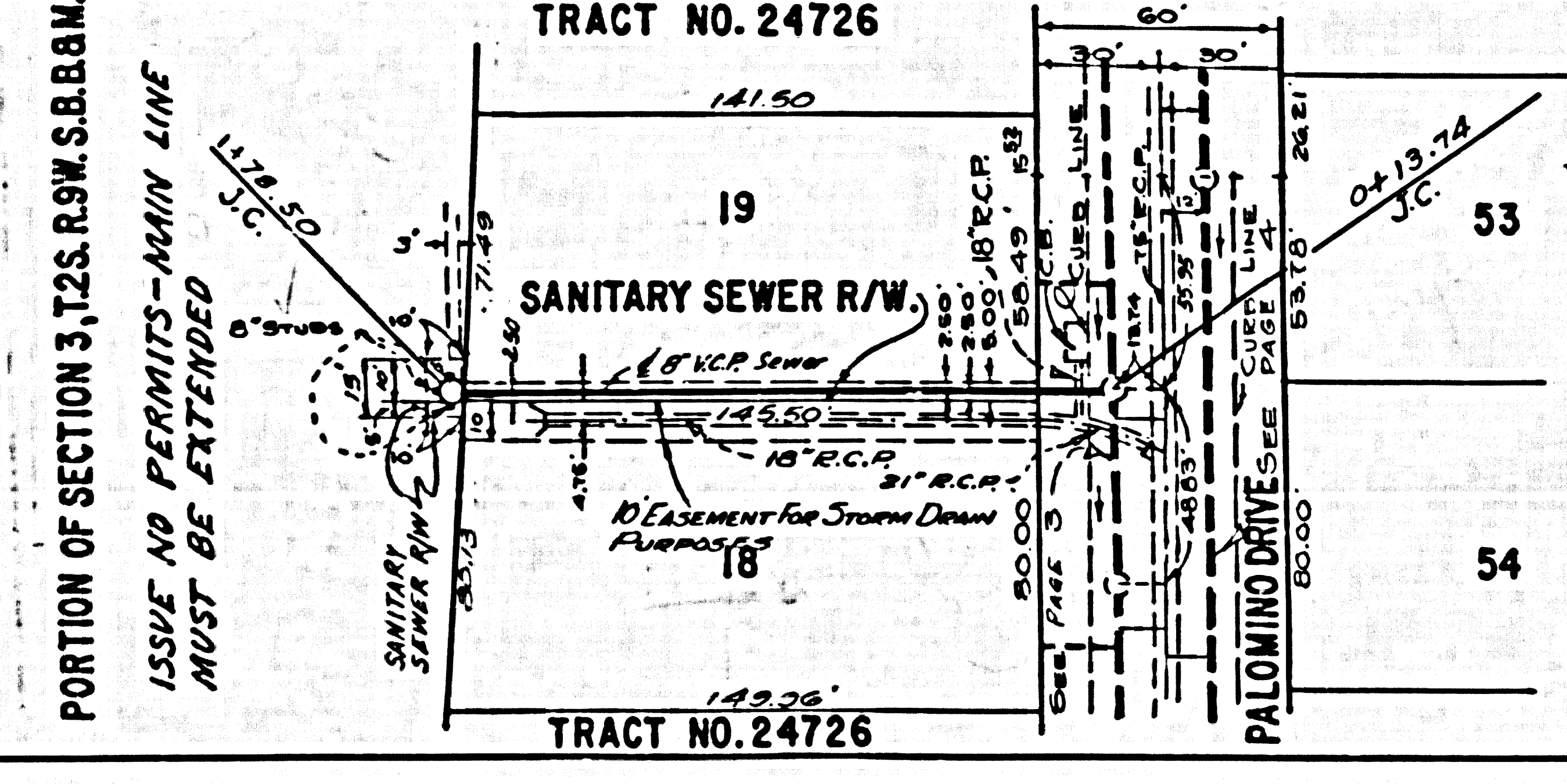
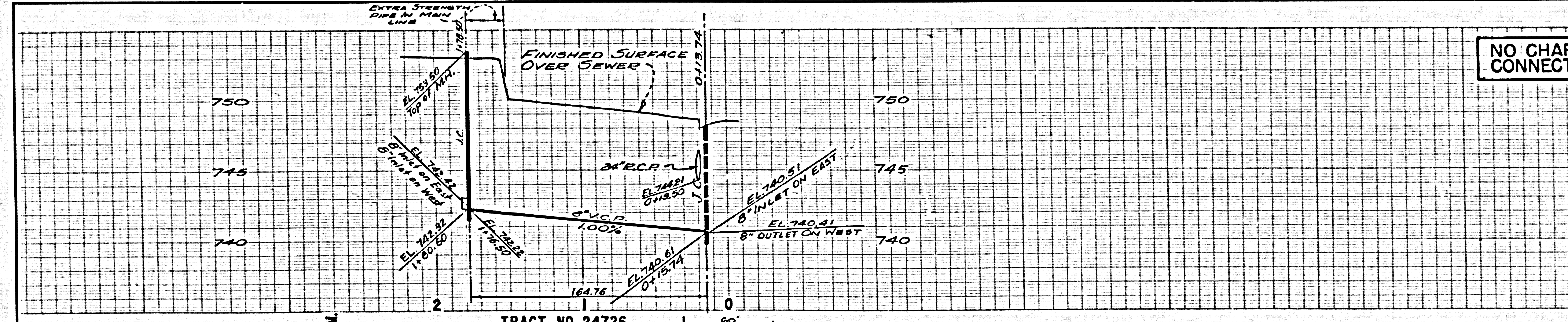
NO CHARGE FOR CONNECTIONS

30243



NO CHARGE FOR CONNECTIONS

30244



PORTION OF SECTION 3, T2S, R9W, S.B.R.&M.
 ISSUE NO PERMITS - MAIN LINE
 MUST BE EXTENDED