

B.M. - T94, Elev. 564.70, per LB 441 Pg 93  
 350'± E. of Cordan Dr, No side St.  
 Cross in top step, walk to House #4257

THIS BENCH MARK IS DESTROYED. PERMISSION GRANTED BY  
 M.A. VAN DEREN, LOS ANGELES COUNTY SURVEY DEPARTMENT  
 TO USE INVERT ELEVATION OF EXISTING MANHOLE.

NO CHARGE FOR  
 CONNECTIONS  
 W.G. Jones 7/15/60

EAST L.A. BLDG. DIST. NO. 6

PROFILE ALIGNMENT AND GRADE OF P.C. 5630  
 SANITARY SEWERS PAGE 1  
 TO BE CONSTRUCTED IN J.N. 0354.25

MILBURN DRIVE

PRIVATE CONTRACT NO. 5630

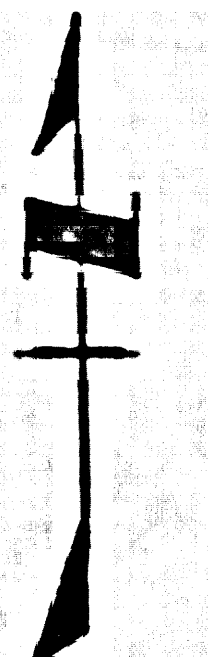
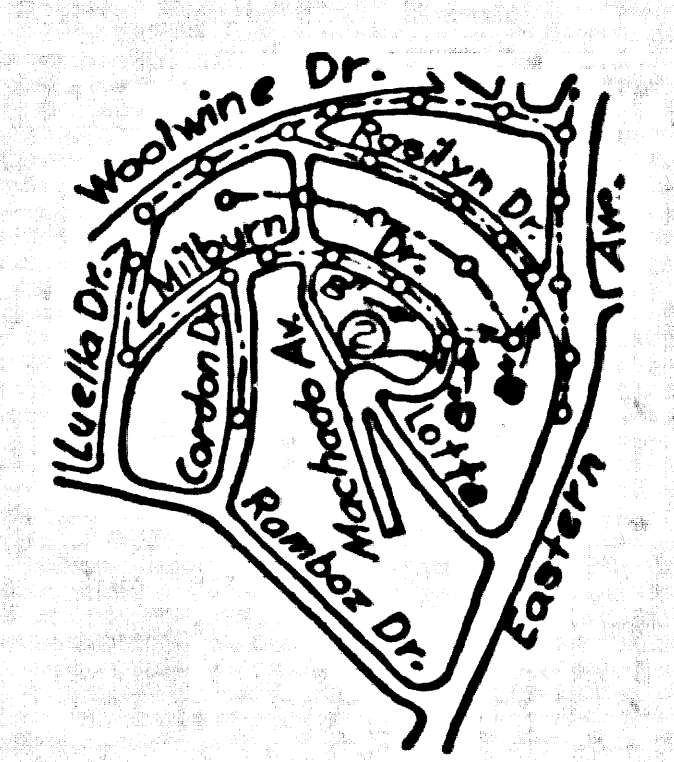
W.S. 36 A-2  
 1 SHEET 2 PAGES  
 SCALE: HORIZ. 1"=40' DATE: JULY, 1960  
 PREPARED IN THE OFFICES OF

Geo. J. Fosdyke  
 REG. C. NO. 4822

29,534

FOR LEGEND SEE PLAN NO. S-A-64

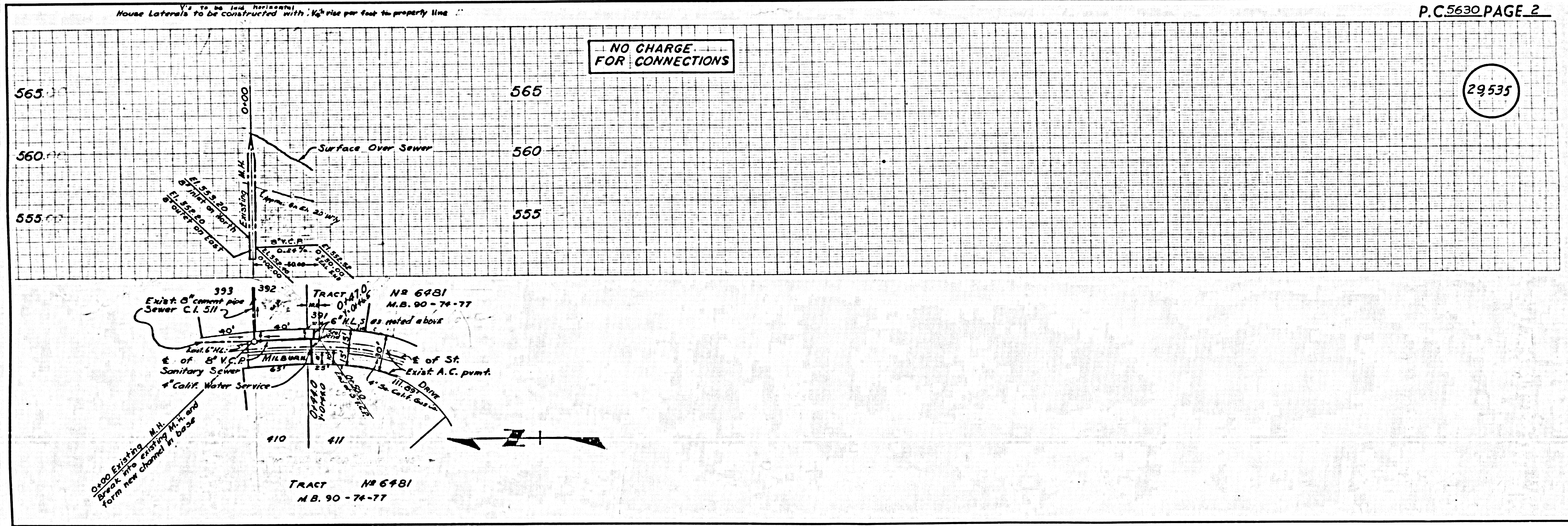
- NOTES:
1. PROVIDE STAKES ON THE PROPERTY LINE OR PROPERTY LINES PRODUCED AT RIGHT ANGLES TO THE SEWER LINE AT THE CENTER LINE OF EACH MANHOLE.
  2. NO REPRESENTATIVE OF THE COUNTY ENGINEER WILL SURVEY OR LAY OUT ANY PORTION OF THE WORK.
  3. THE OWNER OR HIS AUTHORIZED REPRESENTATIVE SHALL FURNISH THE COUNTY ENGINEER WITH GRADE SHEETS AND STATIONING FOR ALL HOUSE LATERALS AND Y BRANCHES AND SHALL PROVIDE STAKES FOR THEM AT THEIR PROPER LOCATIONS WITH STATIONINGS PLAINLY MARKED. ANY CHANGE IN LOCATION SHALL BE REQUESTED IN WRITING BY THE OWNER OR HIS REPRESENTATIVE.
  4. THE PRIVATE ENGINEER SHALL FURNISH THE HOUSE LATERAL DEPTH AT THE PROPERTY LINE BELOW THE TOP OF CURB ELEVATION FOR EACH HOUSE LATERAL ON THE GRADE SHEET.
  5. NO REVISIONS SHALL BE MADE IN THESE PLANS WITHOUT THE APPROVAL OF THE COUNTY ENGINEER.
  6. USE STANDARD MANHOLE FRAMES AND COVERS 18" DIA.
  7. USE STANDARD STRENGTH PIPE
  8. USE CEMENT MORTAR OR "WEDGE-LOCK" OR "SPED-SEAL" FOR ALL V.C.P. JOINTS PER SPEC., SEC. 34 & 40.
  9. RESURFACE ALL TRENCH WITHIN PAVED AREA TO MEET L.A. COUNTY ROAD DEPT. OR CALIF. STATE HIGHWAY REQUIREMENTS IN ACCORDANCE WITH PERMITS.
  10. ENCASE FOUR FEET OF SEWER AT POINTS OF INTERFERENCE WITH POLES, CASE III, S-172.
  11. HOUSE LATERALS TO BE CONSTRUCTED WITH 1/4" RISE PER FOOT TO THE PROPERTY LINE. HOUSE LATERALS TO BE LAID HORIZONTAL.
  12. ALL STRUCTURES SHALL BE BRICK-SEWER-CONFORMANCE, S-100.
  13. FOR ALLOWABLE LEAKAGE TEST USE FORMULA NO. 1 SPEC., SEC. 34.
  14. THE CONTRACTOR SHALL NOTIFY THE CONSTRUCTION DIVISION BY TELEPHONE, MADISON 5-470, AT LEAST TWENTY-FOUR HOURS BEFORE STARTING ANY WORK UNDER THIS CONTRACT.
  15. STANDARD SPECIFICATION DATED JAN. 1, 1960 SHALL APPLY IN THE CONSTRUCTION OF THIS PROJECT.



INDEX MAP  
 SCALE 1"=600'  
 P.C. 5630

NOTE:  
 GRADES TO WHICH THIS IMPROVEMENT IS TO BE CONSTRUCTED ARE SHOWN ON PLANS AND PROFILES. GRADE POINTS FOR TOP OF CURB, CENTER LINE OF STREETS OR CENTER LINE OF ALLEYS ARE SHOWN BY CIRCLES ON PROFILES. AT ALL POINTS BETWEEN DESIGNATED POINTS THE GRADE SHALL BE ESTABLISHED SO AS TO CONFORM TO A STRAIGHT LINE DRAWN BETWEEN SAID DESIGNATED POINTS.  
 ELEVATIONS ARE IN FEET ABOVE U.S.C. & G.S. SEA LEVEL DATUM OF 1929.  
 THIS DRAWING AND THE DATA HEREON ARE HEREBY MADE A PART OF THE SPECIFICATIONS.  
 BEFORE WORK CAN BE STARTED THE CONTRACTOR MUST OBTAIN A PERMIT TO EXCAVATE IN COUNTY STREETS FROM THE L. A. COUNTY ROAD DEPT., DISTRICT OFFICE NO. 7 AND PAY A FEE TO THE COUNTY ENGINEER ROOM 204 PAM AMERICAN BUILDING, 253 SO. BROADWAY SUFFICIENT TO COVER THE COST OF CONSTRUCTION INSPECTION AND RECORD PLANS.  
 APPROVAL OF THIS PLAN BY THE COUNTY OF LOS ANGELES DOES NOT CONSTITUTE A REPRESENTATION AS TO THE ACCURACY OF THE LOCATION OF OR THE EXISTENCE OR NON-EXISTENCE OF ANY UNDERGROUND UTILITY PIPE, OR STRUCTURE WITHIN THE LIMITS OF THIS PROJECT. THIS NOTE APPLIES TO ALL PAGES.  
 IF WORK IS TO BE DONE IN A STATE HIGHWAY, A PERMIT MUST BE OBTAINED FROM THE STATE OF CALIFORNIA, DIVISION OF HIGHWAYS, 138 SOUTH SPRING STREET.

COUNTY OF LOS ANGELES, CALIFORNIA  
 APPROVED, JOHN A. LAMBIE, COUNTY ENGINEER APPROVED, C.R. COMPTON, CHIEF ENGINEER  
 CO. SAN. DIST. NO. 2  
 BY CE Jones BY J. Fosdyke  
 DIST. SANITATION ENGINEER OFFICE ENGINEER  
 CHECKED BY W. G. Jones 7-16-60  
 OFFICE OF COUNTY ENGINEER, REG. C. E. NO. 3406  
 SUBMITTED N. F. Brander  
 SAN GABRIEL VALLEY REGIONAL ENGINEER



NO CHARGE FOR CONNECTIONS

P.C. 5630 PAGE 2

29,535

P.C. 5630 - MILBURN DRIVE