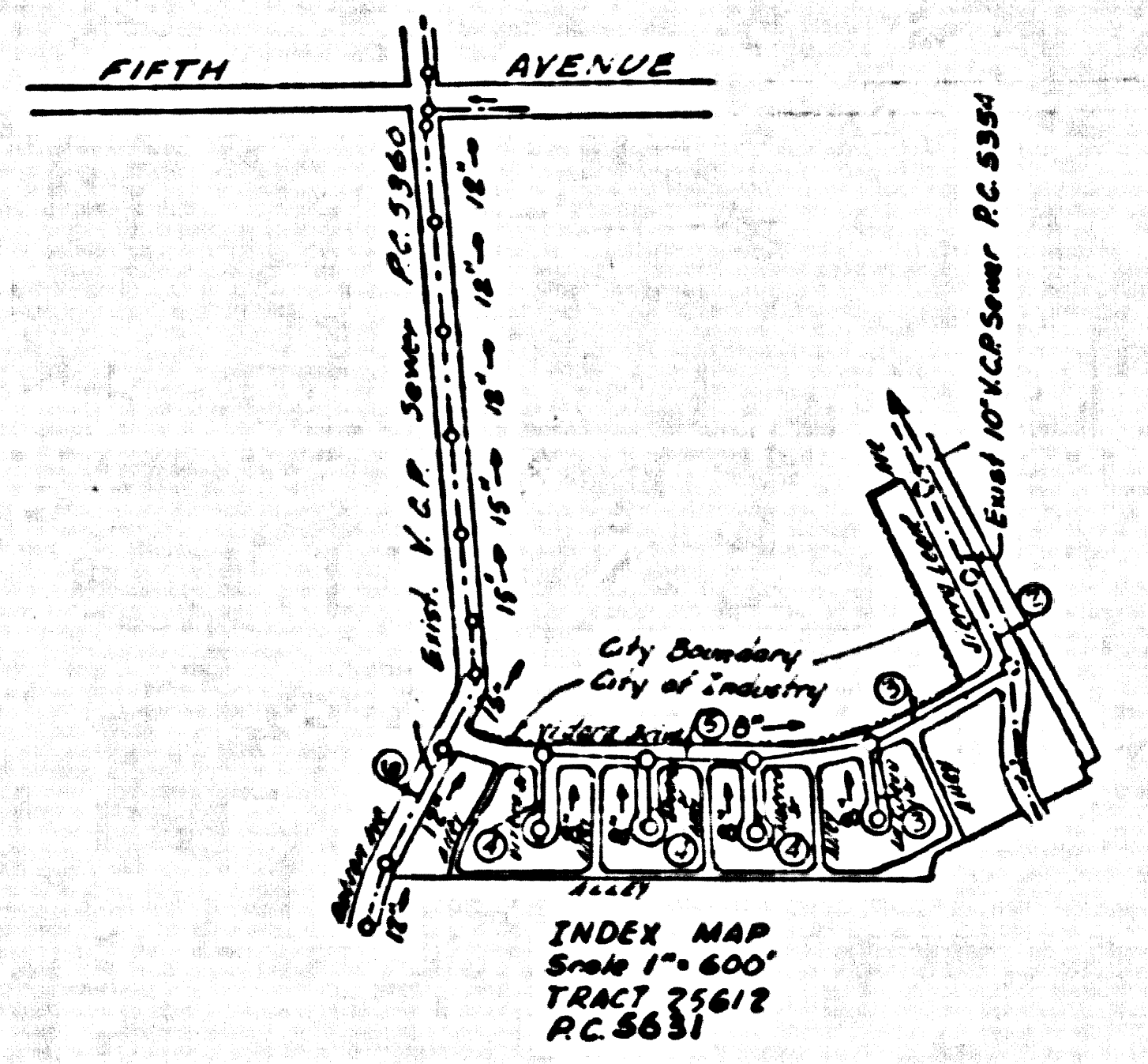


BENCH MARK B.M. 4472
 FIFTH AVENUE ANNEXION PUENTE ROAD & FULLERTON
 ROAD 13.8' E 41.8' S OF & INTERSECTION OF FIFTH
 AVENUE & FULLERTON ROAD ON THE N'LY PROLONGATION
 OF THE E'LY EDGE OF FULLERTON ROAD, STD. C.S.
 MON IN HANDHOLE STAMPED BM 64-12 1955 RE 63
 FB. 1368-114 1953 ADJ. ELEM 453600



17. GROUND WATER: WHERE GROUND WATER IS ENCOUNTERED USE METAL GASKETS AND FORMS OR "WEDGE-LOCK" OR "SPEED-SEAL" PER SECTION 35, 36, AND 48 OF STANDARD SPECIFICATIONS.

18. COMPACTION: NO CONSTRUCTION WILL BE PERMITTED IN FILLED AREAS UNLESS ACCEPTABLE CERTIFICATION IS SUBMITTED TO THE CONSTRUCTION DIVISION OF THE COUNTY ENGINEER'S DEPARTMENT THAT RELATIVE COMPACTION IS GREATER THAN 80%.
 IF COMPACTION IS LESS THAN 90%, THE SEWER MUST BE CRADLED AS SHOWN ON THE PLANS PER 5-a-166.
 IF COMPACTION IS GREATER THAN 90%, NEITHER CRADLING NOR SPECIAL MANHOLE BASES WILL BE REQUIRED; HOWEVER, JOINT COMPOUND OR "WEDGE-LOCK" OR "SPEED-SEAL" MUST BE SUBSTITUTED FOR GEMENT MORTAR FOR ALL JOINTS IN FILLED AREAS.

- NOTES
1. PROVIDE STAKES ON THE PROPERTY LINE OR PROPERTY LINES PRODUCED AT RIGHT ANGLES TO THE SEWER LINE AT THE CENTER LINE OF EACH MANHOLE.
 2. NO REPRESENTATIVE OF THE COUNTY ENGINEER WILL SURVEY OR LAY OUT ANY PORTION OF THE WORK.
 3. THE OWNER OR HIS AUTHORIZED REPRESENTATIVE SHALL FURNISH THE COUNTY ENGINEER WITH GRADE SHEETS AND STATIONINGS FOR ALL HOUSE LATERALS AND V BRANCHES AND SHALL PROVIDE STAKES FOR THEM AT THEIR PROPER LOCATIONS WITH STATIONING PLAINLY MARKED. ANY CHANGE IN LOCATION SHALL BE REQUESTED IN WRITING BY THE OWNER OR HIS REPRESENTATIVE.
 4. THE PRIVATE ENGINEER SHALL FURNISH THE IN-LINE LATERAL DEPTH AT THE PROPERTY LINE BELOW THE TOP OF CURB ELEVATION FOR EACH HOUSE LATERAL ON THE GRADE SHEET.
 5. NO REVISIONS SHALL BE MADE IN THESE PLANS WITHOUT THE APPROVAL OF THE COUNTY ENGINEER.
 6. USE STANDARD MANHOLE FRAMES AND COVERS, 5-0-112.
 7. USE STANDARD STRENGTH PIPE EXCEPT AS NOTED.
 8. USE CEMENT MORTAR OR "WEDGE-LOCK" OR "SPEED-SEAL" FOR ALL V.C.P. JOINTS PER SPECS., SECS. 36 & 45, EXCEPT AS SPECIFIED IN NOTES 17 & 18.
 9. RESURFACE ALL TRENCH WITHIN PAVED AREA TO MEET L.A. COUNTY ROAD DEPT., C4 CAMP, STATE HIGHWAY REQUIREMENTS IN ACCORDANCE WITH PERMITS.
 10. SHOWS FOUR FEET OF SEWER AT POINTS OF INTERFERENCE WITH POLES, CASE 111, 5-0-172.
 11. HOUSE LATERALS TO BE CONSTRUCTED WITH INVERTS AT PROPERTY LINE 6" BELOW CURB GRADE EXCEPT AS NOTED.
 12. ALL STRUCTURES SHALL BE BRICK SEWER STRUCTURES, 5-0-104.
 13. FOR ALLOWABLE LEAKAGE TEST USE FORMULA NO. 2, SPECS., SEC. 54.
 14. MANHOLE TOPS IN UNIMPROVED RIGHTS-OF-WAY TO BE 24 INCHES ABOVE FINISHED GRADE.
 15. THE CONTRACTOR SHALL NOTIFY THE CONSTRUCTION DIVISION BY TELEPHONE, MADISON 9-667, EXT. 1551 AT LEAST TWENTY-FOUR HOURS BEFORE STARTING ANY WORK UNDER THIS CONTRACT.
 16. STANDARD SPECIFICATIONS DATED JAN. 1, 1960 APPLY IN THE CONSTRUCTION OF THIS PROJECT.
- FIGURES IN CIRCLES AT ENDS OF HOUSE LATERALS INDICATE HOUSE LATERALS SHALL BE CONSTRUCTED WITH 1/4" RISE PER FOOT TO PROPERTY LINE

PUENTE BLDG. DIST. NO. 2

PROFILE ALIGNMENT AND GRADE OF **P.C. 5631**
SANITARY SEWERS PAGE 1
 TO BE CONSTRUCTED IN **J.N. 0354.26**
TRACT NO. 25612

PRIVATE CONTRACT NO. 5631

W.S. 38
 3 SHEETS, 6 PAGES

SCALE: VERT. 1"=4' HORIZ. 1"=40'
 AUGUST, 1960

PREPARED IN THE OFFICES OF

NATIONAL ENGINEERING CO.

BY: *E. E. Proulx* REG. C. E. NO. 5828

FOR LEGEND SEE PLAN NO. S-A-64

29939

COLLECT CHARGES AS INDICATED
3x. Duda Bisco

NOTES

GRADES TO WHICH THIS IMPROVEMENT IS TO BE CONSTRUCTED ARE SHOWN ON PLANS AND PROFILE. GRADE POINTS FOR TOP OF CURB, CENTER LINE OF STREETS, OR CENTER LINE OF ALLEYS ARE SHOWN BY CIRCLES ON PROFILE. AT ALL POINTS BETWEEN DESIGNATED POINTS THE GRADE SHALL BE ESTABLISHED SO AS TO CONFORM TO A STRAIGHT LINE DRAWN BETWEEN SAID DESIGNATED POINTS.

ELEVATIONS ARE IN FEET ABOVE U.S.C. & G.S. SEA LEVEL DATUM OF 1929.

THIS DRAWING AND THE DATA HEREON ARE HEREBY MADE A PART OF THE SPECIFICATIONS.

WORK SHALL BE CONSTRUCTED ACCORDING TO SPECIFICATIONS ON FILE IN THE OFFICE OF THE COUNTY ENGINEER AND SHALL BE PRODUCED ONLY IN THE PRESENCE OF THE COUNTY ENGINEER.

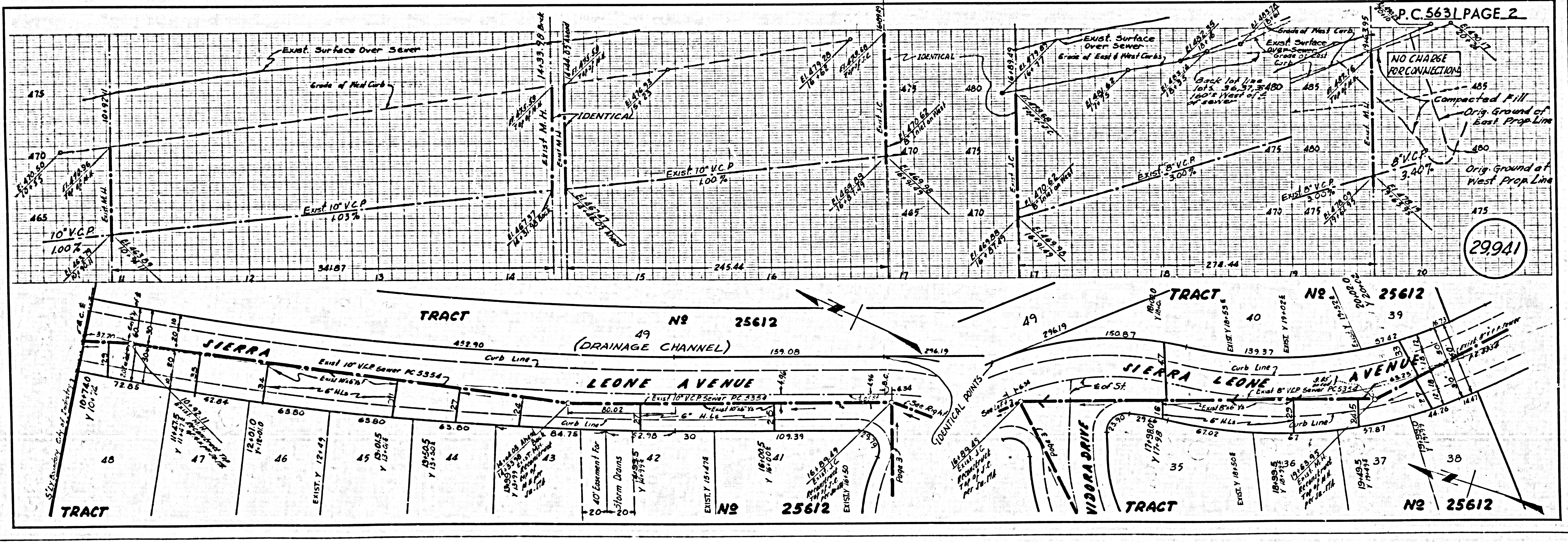
BEFORE WORK CAN BE STARTED, THE CONTRACTOR MUST OBTAIN A PERMIT TO EXCAVATE IN COUNTY RIGHTS FROM THE L.A. COUNTY ROAD DEPT., DISTRICT OFFICE NO. 1, 1000 W. 10TH ST., LOS ANGELES, CALIF. FROM THE COUNTY ENGINEER, ROOM 224 FARM ARCADE BUILDING, 238 SO. BROADWAY SUITE 201, LOS ANGELES, CALIF. TO COVER THE COST OF CONSTRUCTION INSPECTION AND RECORD PLANS.

APPROVAL OF THIS PLAN BY THE COUNTY OF LOS ANGELES DOES NOT CONSTITUTE A REPRESENTATION AS TO THE ACCURACY OF THE LOCATION OF OR THE EXISTENCE OR NON-EXISTENCE OF ANY UNDERGROUND UTILITY PIPE, OR STRUCTURE WITHIN THE LIMITS OF THE PROJECT. THIS NOTE APPLIES TO ALL PAGES.

IF WORK IS TO BE DONE IN A STATE HIGHWAY, A PERMIT MUST BE OBTAINED FROM THE STATE OF CALIFORNIA, DIVISION OF HIGHWAYS, 128 SOUTH SPRING STREET.

COUNTY OF LOS ANGELES, CALIFORNIA

APPROVED, JOHN A. LAMBE, COUNTY ENGINEER
 APPROVED, C.R. COMPTON, CHIEF ENGINEER
 BY: *E. E. Proulx* DISTRICT SANITATION ENGINEER
 BY: *[Signature]* CHIEF ENGINEER
 CHECKED BY: *3x. Duda Bisco*
 OFFICE OF COUNTY ENGINEER, REG. C. E. NO. 5445
 SUBMITTED *W.C. Reinhardt* SAN DIMAS REGIONAL ENGINEER



29941

P.C. 5631 PAGE 2

