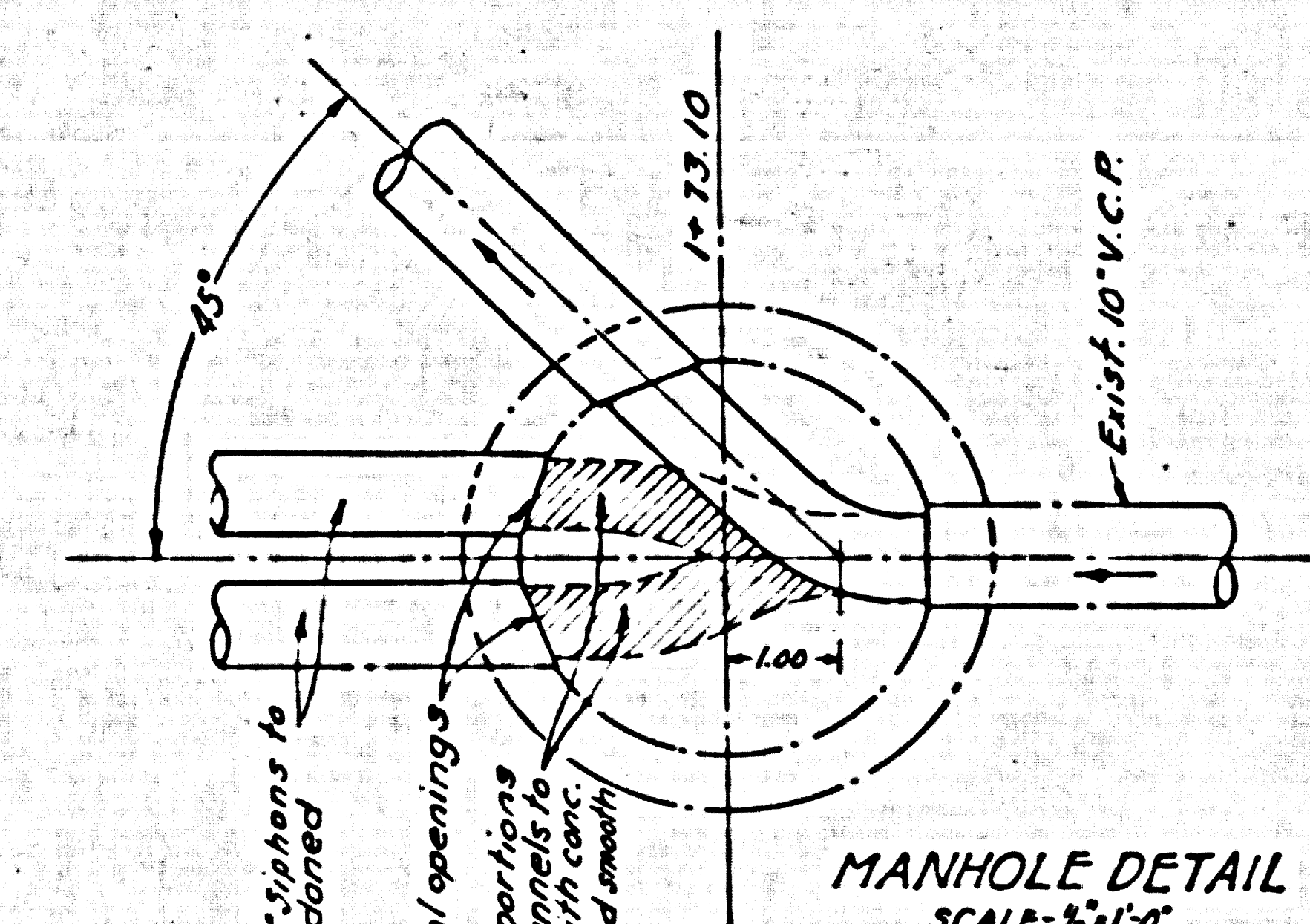
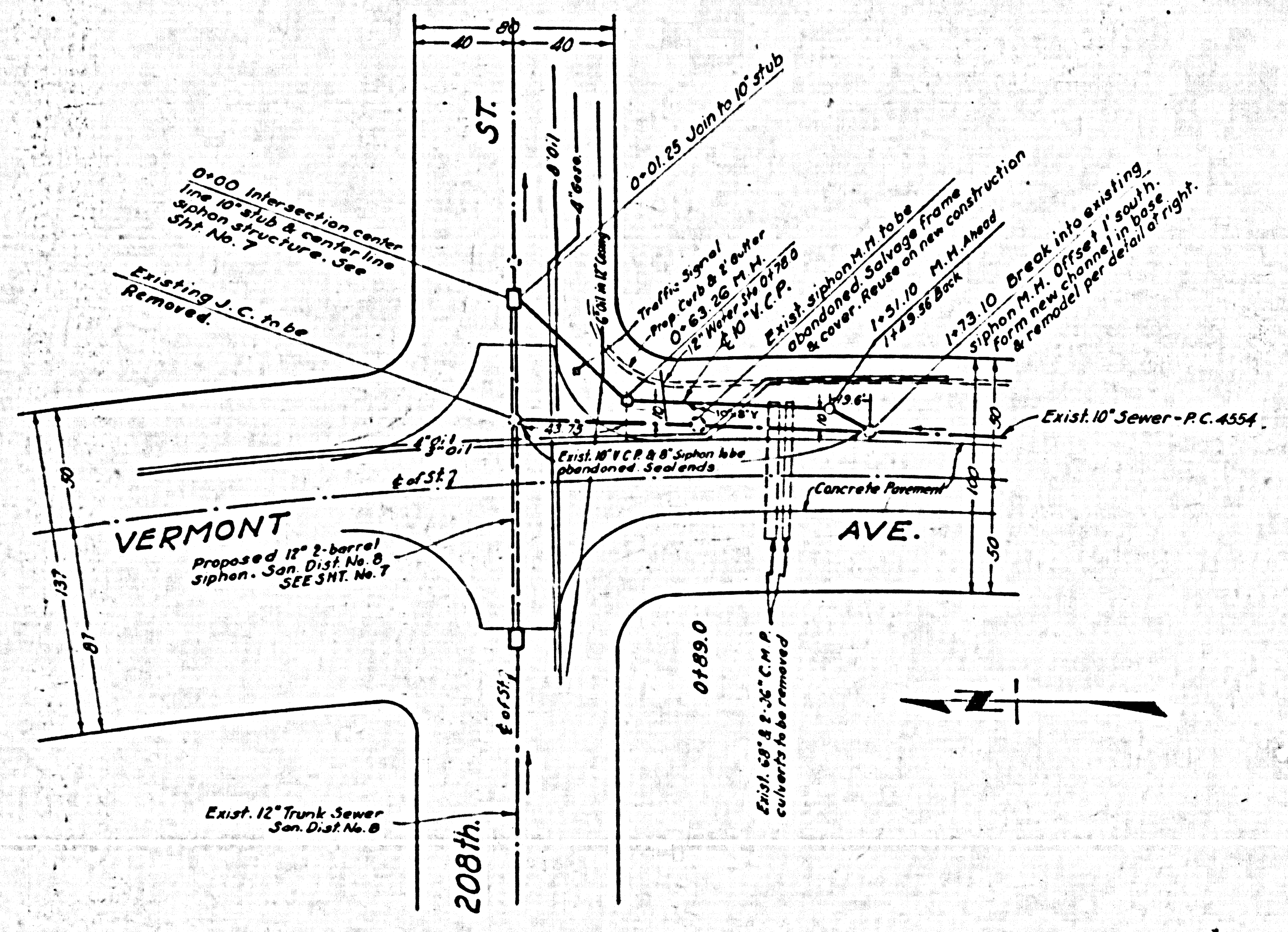


SCALE: VERT. 1"=4'  
 HORIZ. 1"=40'



30462

APPROVED: JOHN A. LAMBIE, COUNTY ENGINEER	LOS ANGELES COUNTY ROAD DEPARTMENT		
BY: <i>C. E. Mund</i> 8-3-60 ASSISTANT SANITATION ENGINEER	HIGHWAY DIVISION	JOB NAME VERMONT AVE. - 208th ST.	LIMITS OVER TORRANCE LATERAL
P.C. 5633	SCALE HORIZ. AS NOTED VERT.	JOB NO. 10004	SHEET 8 OF 8 SHTS. D.W.G. NO. C-5805