

B.M. 5Y 1140 Elev. 253.541
 L. & N. Cr. Conc. hdwl. ±30' N. of 1/2 IMPERIAL
 HWY. ±50' W. of 1/2 SANTA GERTRUDES AVE.
 1955 LA MIRADA QUAD.

INDEX MAP
 TRACT No. 24513
 P.C. 5634
 J.N. 0354.28
 Scale 1"=200'

NO CHARGE FOR CONNECTIONS.
D. J. ... 9-7-60

NOTE:
 LOTS 1, 2 & 3 TO BE SERVED
 BY CONNECTING TO EXISTING
 12" V.C.P. SEWER P.C. 4807

NORWALK BLDG. DIST. NO. 4.2

- NOTES:**
1. PROVIDE STAKES ON THE PROPERTY LINE OR PROPERTY LINES PRODUCED AT RIGHT ANGLES TO THE SEWER LINE AT THE CENTER LINE OF EACH MANHOLE.
 2. NO REPRESENTATIVE OF THE COUNTY ENGINEER WILL SURVEY OR LAY OUT ANY PORTION OF THE WORK.
 3. THE OWNER OR HIS AUTHORIZED REPRESENTATIVE SHALL FURNISH THE COUNTY ENGINEER WITH GRADE SHEETS AND STATIONING FOR ALL HOUSE LATERALS AND BRANCHES AND SHALL PROVIDE STAKES FOR THEM AT THEIR PROPER LOCATIONS WITH STATIONING PLAINLY MARKED. ANY CHANGE IN LOCATION SHALL BE REQUESTED IN WRITING BY THE OWNER OR HIS REPRESENTATIVE.
 4. THE PRIVATE ENGINEER SHALL FURNISH THE HOUSE LATERAL DEPTH AT THE PROPERTY LINE BELOW THE TOP OF CURB ELEVATION FOR EACH HOUSE LATERAL ON THE GRADE SHEET.
 5. NO REVISIONS SHALL BE MADE IN THESE PLANS WITHOUT THE APPROVAL OF THE COUNTY ENGINEER.
 6. USE STANDARD MANHOLE FRAMES AND COVERS, S-117, EXCEPT AS NOTED.
 7. USE STANDARD STRENGTH PIPE EXCEPT AS NOTED.
 8. USE CEMENT MORTAR OR "VEDRALOC" OR "FRED-SEAL" FOR ALL V.C.P. JOINTS PER SPEC. SECS. 11 & 12.
 9. RESURFACE ALL TRENCH WITHIN PAVED AREA TO MEET L.A. COUNTY ROAD DEPT. OR CALIF. STATE HIGHWAY REQUIREMENTS IN ACCORDANCE WITH PERMITS.
 10. ENCASE FOUR FEET OF SEWER AT POINTS OF INTERFERENCE WITH POLES, CASE III, S-117.
 11. HOUSE LATERALS TO BE CONSTRUCTED WITH INVERTS AT PROPERTY LINE $\frac{1}{2}$ FEET BELOW CURB GRADE EXCEPT AS NOTED.
 12. ALL STRUCTURES SHALL BE BRICK SEWER STRUCTURES, S-104, EXCEPT AS NOTED.
 13. FOR ALLOWABLE LEAKAGE TEST USE FORMULA NO. 1, SPEC. SEC. 14.
 14. MANHOLE TOPS IN UNIMPROVED RIGHTS-OF-WAY TO BE SIX INCHES ABOVE FINISHED GRADE.
 15. THE CONTRACTOR SHALL NOTIFY THE CONSTRUCTION & STORM DRAIN DIVISION BY TELEPHONE, MADISON 9-470, EXT. 81-561 AT LEAST TWENTY-FOUR HOURS BEFORE STARTING ANY WORK UNDER THIS CONTRACT.
 16. STANDARD SPECIFICATIONS DATE JANUARY 1, 1960 APPLY IN THE CONSTRUCTION OF THIS PROJECT.

PROFILE ALIGNMENT AND GRADE OF **P.C. 5634**
SANITARY SEWERS PAGE 1
 TO BE CONSTRUCTED IN J.N. 0354.28
TRACT No. 24513

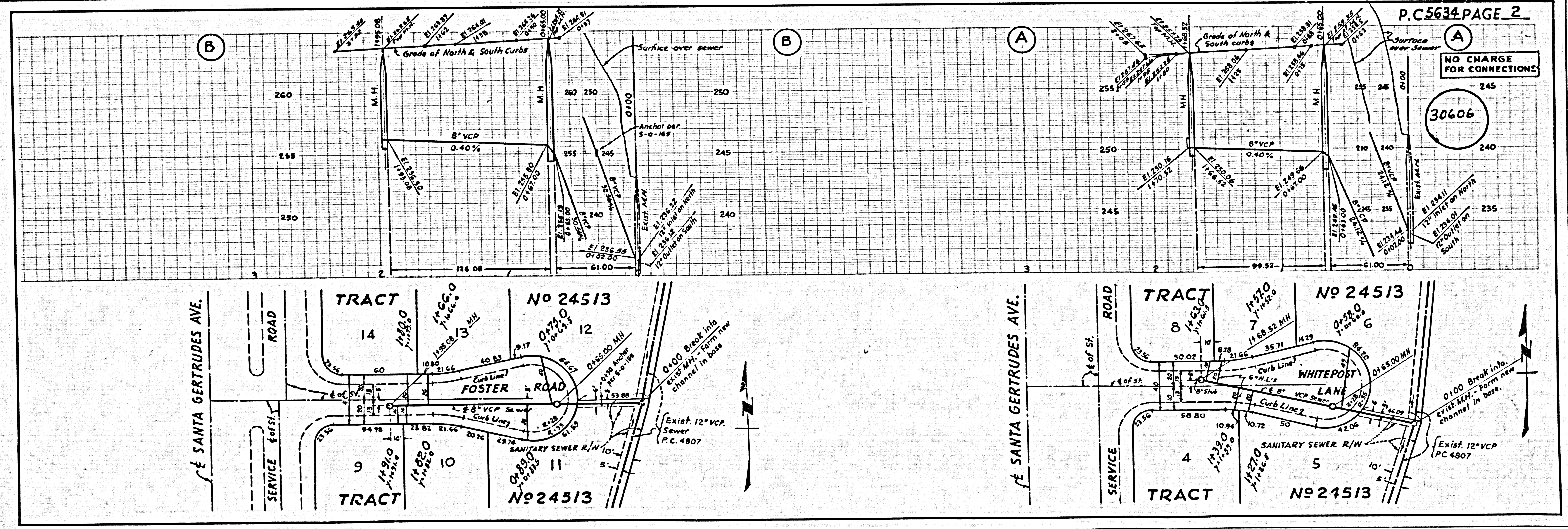
PRIVATE CONTRACT NO. 5634
 W.S. 34
 2 SHEETS; 3 PAGES
 SCALE: VERT. 1"=4' JULY, 1960
 HORIZ. 1"=40'
 PREPARED IN THE OFFICES OF
BARNETT, HOPEN, SMITH & SALIT
 CIVIL ENGINEERS AND LAND SURVEYORS
 By: *Arnold A. Barnett*
 REG. C. E. NO. 1216

FOR LEGEND SEE PLAN NO. S-A-44

NOTE:
 GRADES TO WHICH THIS IMPROVEMENT IS TO BE CONSTRUCTED ARE SHOWN ON PLANS AND PROFILE GRADE POINTS FOR TOP OF CURB, CENTER LINE OF STREETS OR CENTER LINE OF ALLEYS ARE SHOWN BY CIRCLES ON PROFILE AT ALL POINTS BETWEEN DESIGNATED POINTS THE GRADE SHALL BE ESTABLISHED SO AS TO CONFORM TO A STRAIGHT LINE DRAWN BETWEEN SAID DESIGNATED POINTS.
 ELEVATIONS ARE IN FEET ABOVE U.S.C. & G.S. SEA LEVEL DATUM OF 1929.
 THIS DRAWING AND THE DATA HEREON ARE HEREBY MADE A PART OF THE SPECIFICATIONS.
 WORK SHALL BE CONSTRUCTED ACCORDING TO SPECIFICATIONS ON FILE IN THE OFFICE OF THE COUNTY ENGINEER AND SHALL BE PROSECUTED ONLY IN THE PRESENCE OF THE COUNTY ENGINEER.
 BEFORE WORK CAN BE STARTED, THE CONTRACTOR MUST OBTAIN A PERMIT TO EXCAVATE IN COUNTY STREETS FROM THE L. A. COUNTY ROAD DEPT., DISTRICT OFFICE NO. 10, AND PAY A FEE WITH THE COUNTY ENGINEER ROOM 124 PAN AMERICAN BUILDING, 311 S.O. BROADWAY SUFFICIENT TO COVER THE COST OF CONSTRUCTION INSPECTOR AND RECORD PLANS.
 APPROVAL OF THIS PLAN BY THE COUNTY OF LOS ANGELES DOES NOT CONSTITUTE A REPRESENTATION AS TO THE ACCURACY OF THE LOCATION OF OR THE EXISTENCE OR NON-EXISTENCE OF ANY UNDERGROUND UTILITY PIPE, OR STRUCTURE WITHIN THE LIMITS OF THIS PROJECT. THIS NOTE APPLIES TO ALL PAGES.
 IF WORK IS TO BE DONE IN A STATE HIGHWAY, A PERMIT MUST BE OBTAINED FROM THE STATE OF CALIFORNIA, DIVISION OF HIGHWAYS, 120 SOUTH SPRING STREET.

COUNTY OF LOS ANGELES, CALIFORNIA
 APPROVED, JOHN A. LAMBE, COUNTY ENGINEER APPROVED, C. R. COMPTON, CHIEF ENGINEER
 CO. SAN. DIV. NO. 18
 BY: *C. R. Compton* ASST. SANITATION ENGINEER BY: *J. A. Lamb* OFFICE ENGINEER
 CHECKED BY: *D. J. ...* 9-13-60
 OFFICE OF COUNTY ENGINEER, REG. C. E. NO. 34216

SUBMITTED BY: *John L. ...* 9-8-60
 LOS ANGELES REGIONAL ENGINEER, REG. C. E. NO. 3871



NO CHARGE FOR CONNECTIONS.
 30606

NO CHARGE FOR CONNECTIONS.
 30606

