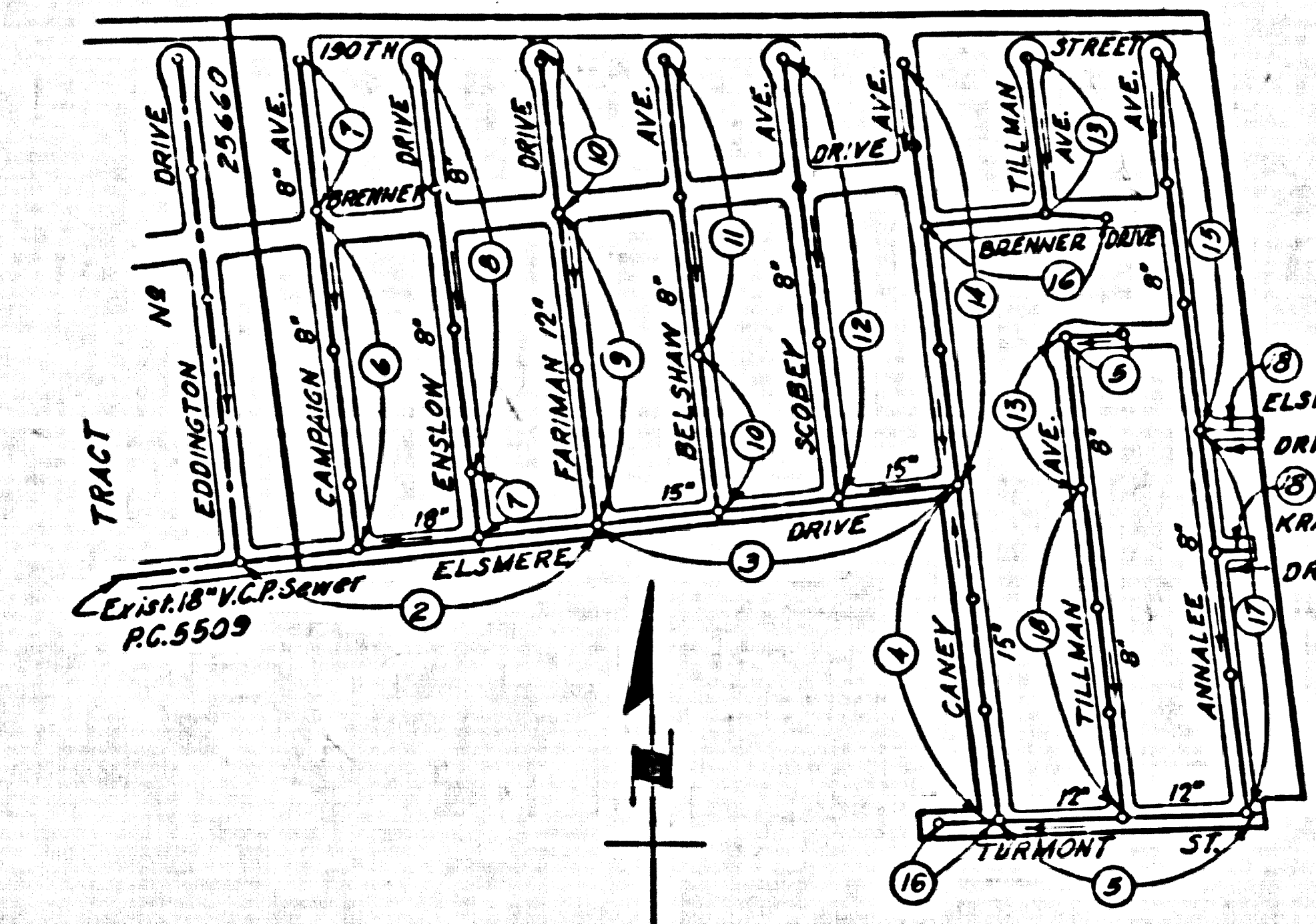


BENCH MARK
 EL. 18-928'
 Avalon Blvd. and Dept. of Water Power Tower
 14.4' W. of the center of Tower set in
 well protected by cast iron cover marked
 'COUNTY SURVEYOR MONUMENT' a standard
 C.S. Mon. stamped "B.N. 23-6 1952 R.E. 63"



INDEX MAP
 TRACT NO 25661
 SCALE: 1"=400'
 P.C. 5635

Revision: Added 255' 6" V.C.P. on Elsmere Drive 48' and Kramer Drive 30' 12" on Turnmont St. page 5.
 Approved: [Signature] Office of County Engineer

NO CHARGE FOR CONNECTIONS
 L. Custer 9-16-60

LENNOX BLDG. DIST. NO. 7

- NOTES:
1. PROFILE STAKES ON THE PROPERTY LINE OR PROPERTY LINES PRODUCED AT RIGHT ANGLES TO THE SEWER LINE AT THE CENTER LINE OF EACH MANHOLE.
 2. NO REPRESENTATIVE OF THE COUNTY ENGINEER WILL SURVEY OR LAY OUT ANY PORTION OF THE WORK.
 3. THE OWNER OR HIS AUTHORIZED REPRESENTATIVE SHALL FURNISH THE COUNTY ENGINEER WITH GRADE SHEETS AND STATIONING FOR ALL HOUSE LATERALS AND 7 BRANCHES AND SHALL PROVIDE STAKES FOR THEM AT THEIR PROPER LOCATIONS WITH STATIONING PLAINLY MARKED. ANY CHANGE IN LOCATION SHALL BE REQUESTED BY WRITING BY THE OWNER OR HIS REPRESENTATIVE.
 4. THE PRIVATE ENGINEER SHALL FURNISH THE HOUSE LATERAL DEPTH AT THE PROPERTY LINE BELOW THE TOP OF CURB ELEVATION FOR EACH HOUSE LATERAL ON THE GRADE SHEET.
 5. NO REVISIONS SHALL BE MADE IN THESE PLANS WITHOUT THE APPROVAL OF THE COUNTY ENGINEER.
 6. USE STANDARD MANHOLE FRAMES AND COVERS, S-117.
 7. USE STANDARD STRENGTH PIPE EXCEPT AS NOTED.
 8. USE CEMENT MORTAR OR "WEDGE-LOCK" OR "SPEED-SEAL" FOR ALL V.C.P. JOINTS PER SPEC'S, SPEC. 24 & 48.
 9. RESURFACE ALL TRENCH WITHIN PAVED AREA TO MEET L.A. COUNTY ROAD DEPT. OR CALIF. STATE HIGHWAY REQUIREMENTS IN ACCORDANCE WITH PERMITS.
 10. INCREASE FOUR FEET OF WIDTH AT POINTS OF INTERFERENCE WITH HOLES, CASE III, S-112.
 11. HOUSE LATERALS TO BE CONSTRUCTED WITH INVERTS AT PROPERTY LINE 6 FEET BELOW CURB GRADE.
 12. ALL STRUCTURES SHALL BE BRICK 6" WITH STRUCTURE, S-114.
 13. FOR ALLOWABLE LEAKAGE TEST USE FORMULA NO. 1, SPEC'S, SEC. 54.
 14. THE CONTRACTOR SHALL NOTIFY THE CONSTRUCTION & STORM DRAIN DIVISION BY TELEPHONE, MADISON 9-670, EXT. 6151 AT LEAST TWENTY-FOUR HOURS BEFORE STARTING ANY WORK UNDER THIS CONTRACT.
 15. SPECIFICATIONS DATED JAN. 1, 1960 APPLY IN THE CONSTRUCTION OF THIS PROJECT.

PROFILE ALIGNMENT AND GRADE OF P.C. 5635
 SANITARY SEWERS PAGE 1
 TO BE CONSTRUCTED IN J.M. 0354.29
 TRACT NO 25661

PRIVATE CONTRACT NO. 5635

W.S. 26
 9 SHEETS; 18 PAGES
 SCALE: VERT. 1"=4' HORIZ. 1"=40'
 JULY, 1960
 PREPARED IN THE OFFICES OF
 ENGINEERING SERVICE CORPORATION

30330

By: [Signature] REG. C. E. NO. 2622
 FOR LEGEND SEE PLAN NO. S-A-64

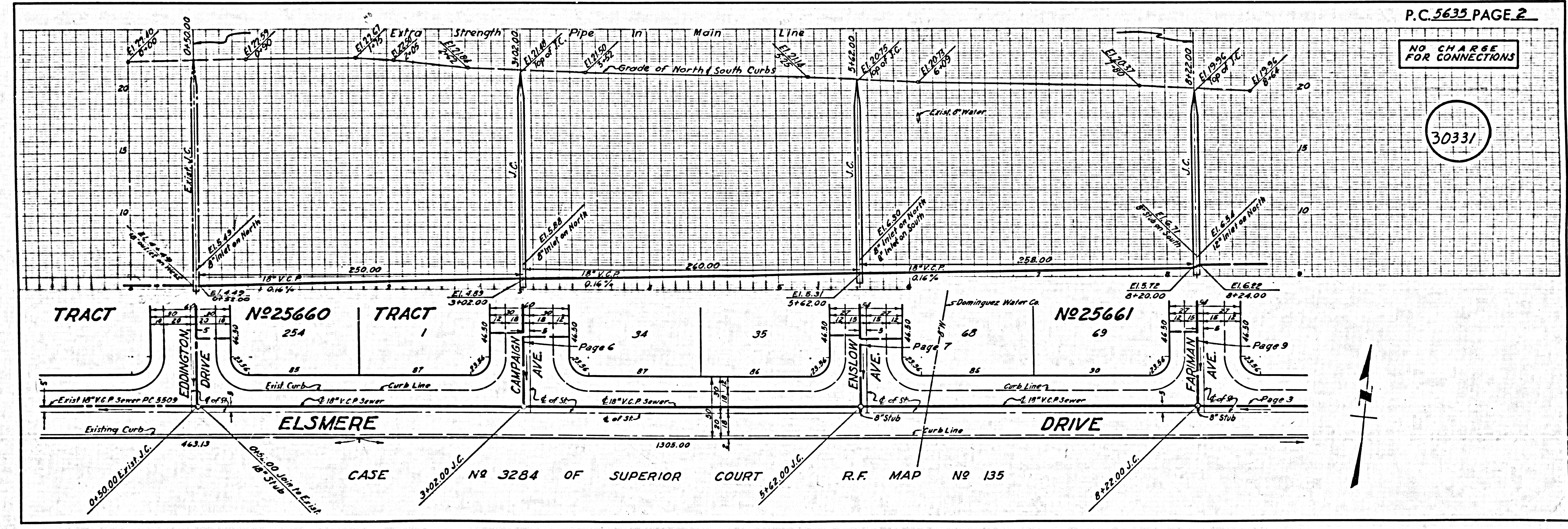
NOTE:
 GRADES TO WHICH THE IMPROVEMENT IS TO BE CONSTRUCTED ARE SHOWN ON PLANS AND PROFILES. GRADE POINTS FOR TOP OF CURB, CENTER LINE OF STREETS, OR CENTER LINE OF ALLEYS ARE SHOWN BY CIRCLES ON PLANS AND AT ALL POINTS BETWEEN DESIGNATED POINTS THE GRADE SHALL BE ESTABLISHED SO AS TO CONFORM TO A STRAIGHT LINE BETWEEN SAID DESIGNATED POINTS.
 ELEVATIONS ARE IN FEET ABOVE U.S.C. & G.S. SEA LEVEL DATUM OF 1929.
 THIS DRAWING AND THE DATA HEREON ARE HEREBY MADE A PART OF THE SPECIFICATIONS.
 WORK SHALL BE CONSTRUCTED ACCORDING TO SPECIFICATIONS ON FILE IN THE OFFICE OF THE COUNTY ENGINEER AND SHALL BE PROSECUTED ONLY IN THE PRESENCE OF THE COUNTY ENGINEER.
 BEFORE WORK CAN BE STARTED, THE CONTRACTOR MUST OBTAIN A PERMIT TO EXCAVATE IN COUNTY STREETS FROM THE L.A. COUNTY ROAD DEPT., DISTRICT OFFICE NO. 3 - AND PAY A FEE TO THE COUNTY ENGINEER, ROOM 328 PALM AVENUE BUILDING, 238 SO. BROADWAY SUFFICIENT TO COVER THE COST OF CONSTRUCTION INSPECTION AND RECORD PLANS.
 APPROVAL OF THIS PLAN BY THE COUNTY OF LOS ANGELES DOES NOT CONSTITUTE A REPRESENTATION AS TO THE ACCURACY OF THE LOCATION OR OF THE EXISTENCE OR NON-EXISTENCE OF ANY UNDERGROUND UTILITY PIPE, OR STRUCTURE WITHIN THE LIMITS OF THIS PROJECT. THIS NOTE APPLIES TO ALL PAGES.
 IF WORK IS TO BE DONE IN A STATE HIGHWAY, A PERMIT MUST BE OBTAINED FROM THE STATE OF CALIFORNIA, DIVISION OF HIGHWAYS, 138 SOUTH SPRING STREET.

ENGINEERING SERVICE CORPORATION
 1127 W. WASHINGTON BLVD. RI. 9-7281
 LOS ANGELES 15, CALIF.

| | | |
|---------------------|----------|---------------------------|
| REVISIONS | | TRACED BY <u>BB. 1103</u> |
| | | DES'G'D BY <u>C.R.</u> |
| | | CK'D BY <u>A.A.M.</u> |
| | | SUBMITTED |
| SUB STRUCTURES OK'D | | |
| W. O. NO. | DWG. NO. | DATE |
| 5950-121 | | JULY 1960 |

| | | |
|----------|------|------|
| SCALE | L.B. | P.B. |
| AS SHOWN | NONE | NONE |

COUNTY OF LOS ANGELES, CALIFORNIA
 APPROVED, JOHN A. LAMBE, COUNTY ENGINEER
 APPROVED, C.R. COMPTON, CHIEF ENGINEER
 BY: [Signature] ASST. SANITATION ENGINEER
 BY: [Signature] OFFICE ENGINEER
 CHECKED BY: [Signature] 9-20-60
 OFFICE OF COUNTY ENGINEER, REG. C. E. NO. 2306
 Submitted By: [Signature] PALOS VERDES-CENTINELA VALLEY REGIONAL ENGINEER



P.C. 5635 PAGE 2

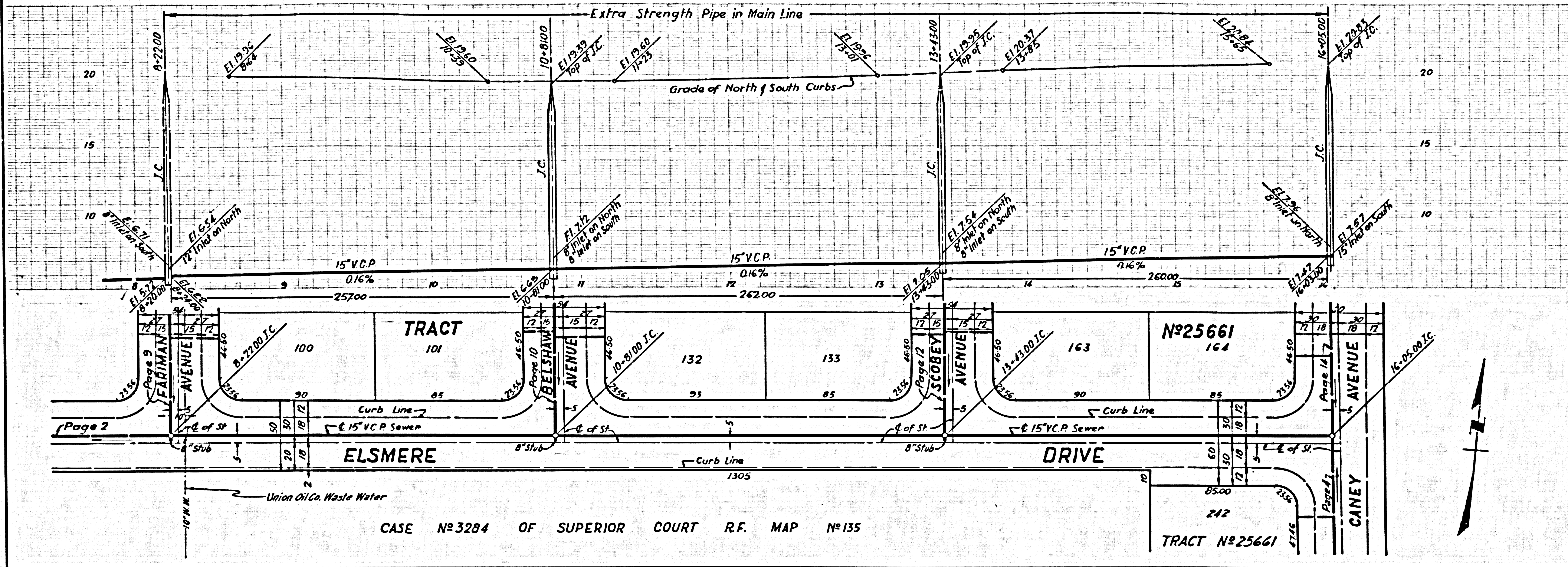
NO CHARGE FOR CONNECTIONS

30331

TRACT NO 25660 TRACT NO 25661
 ELSMERE DRIVE
 CASE NO 3284 OF SUPERIOR COURT R.F. MAP NO 135

NO CHARGE FOR CONNECTIONS

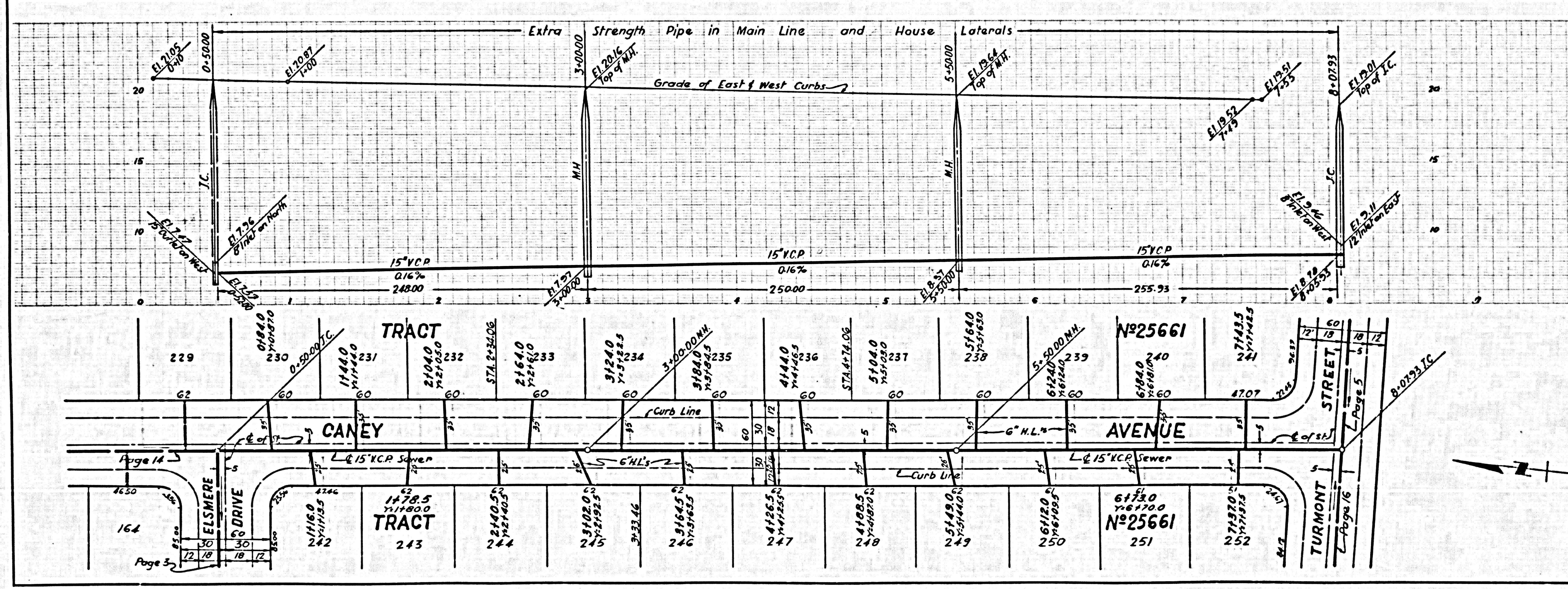
30332



CASE No 3284 OF SUPERIOR COURT R.F. MAP No 135

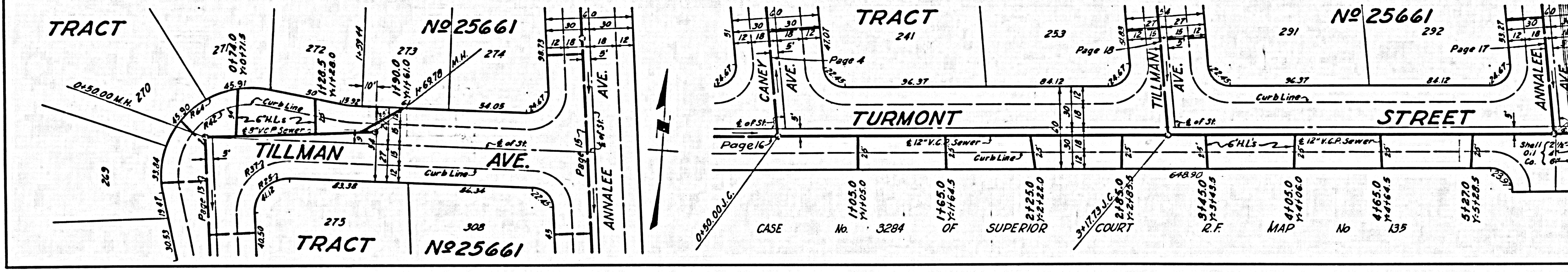
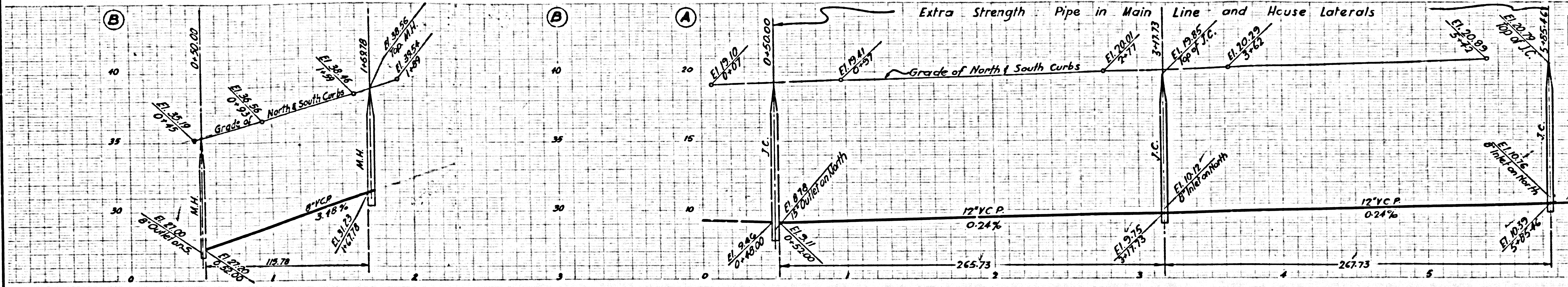
NO CHARGE FOR CONNECTIONS

30333



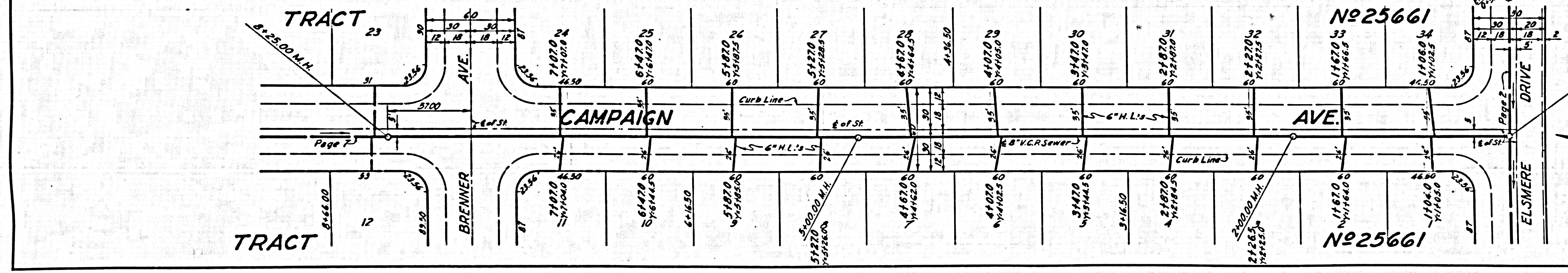
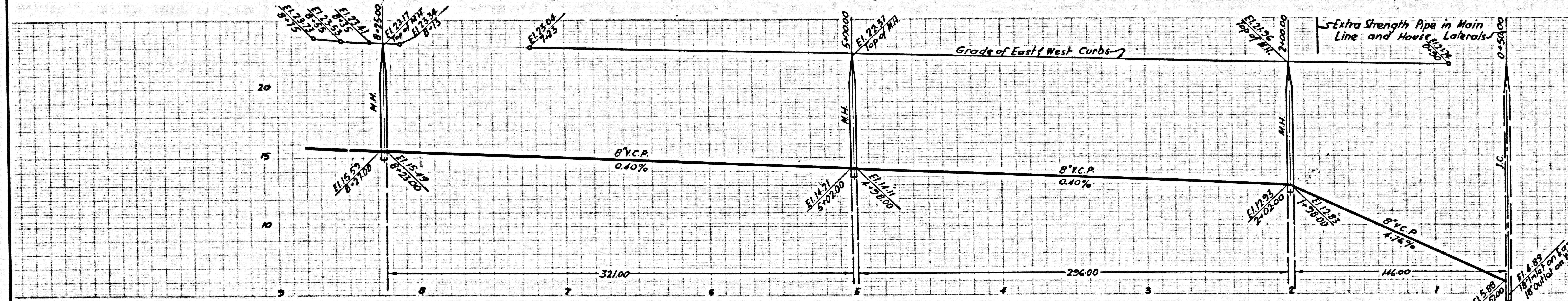
NO CHARGE FOR CONNECTIONS

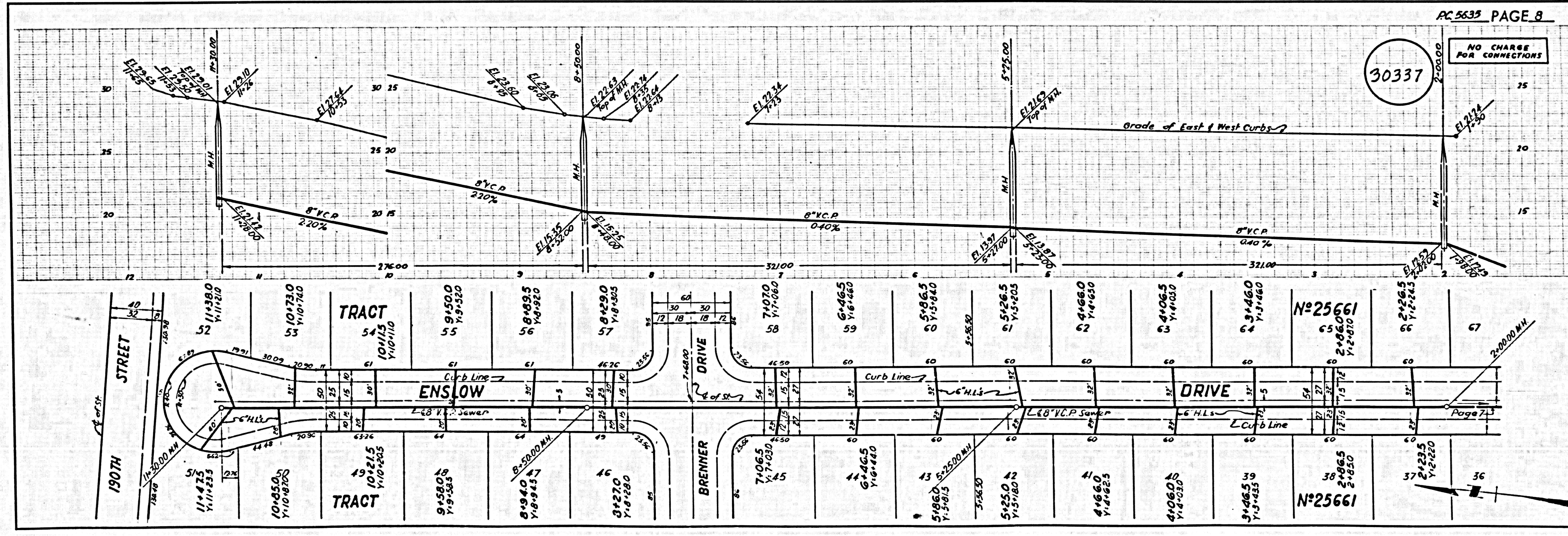
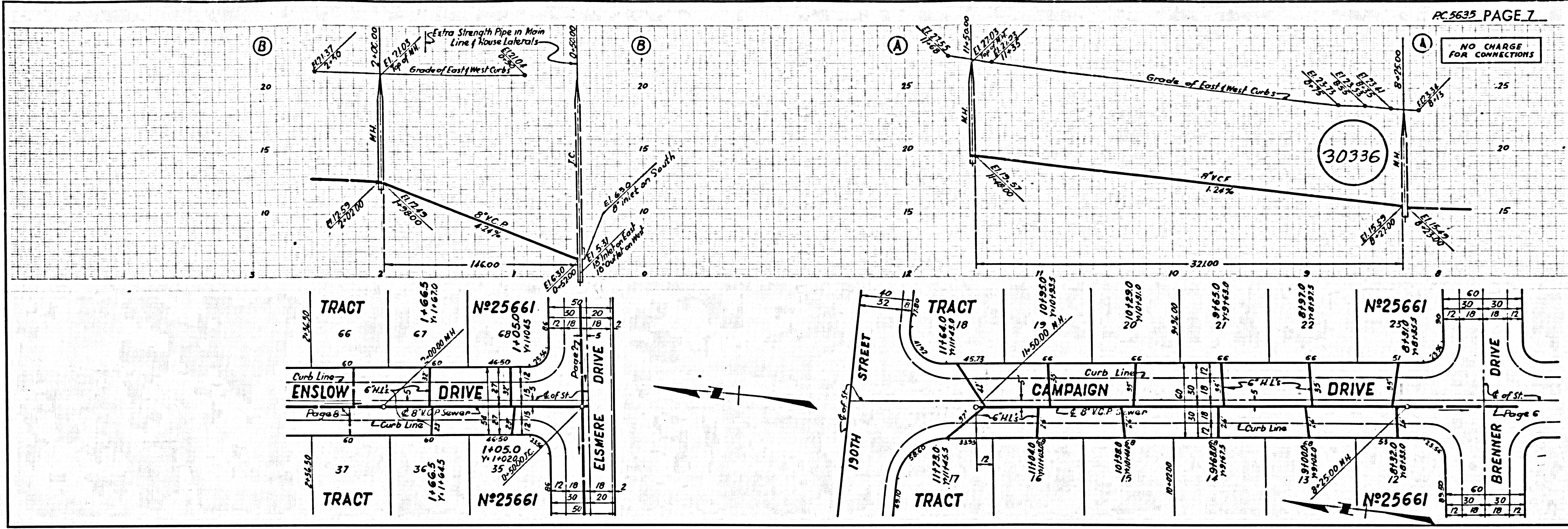
30334



NO CHARGE FOR CONNECTIONS

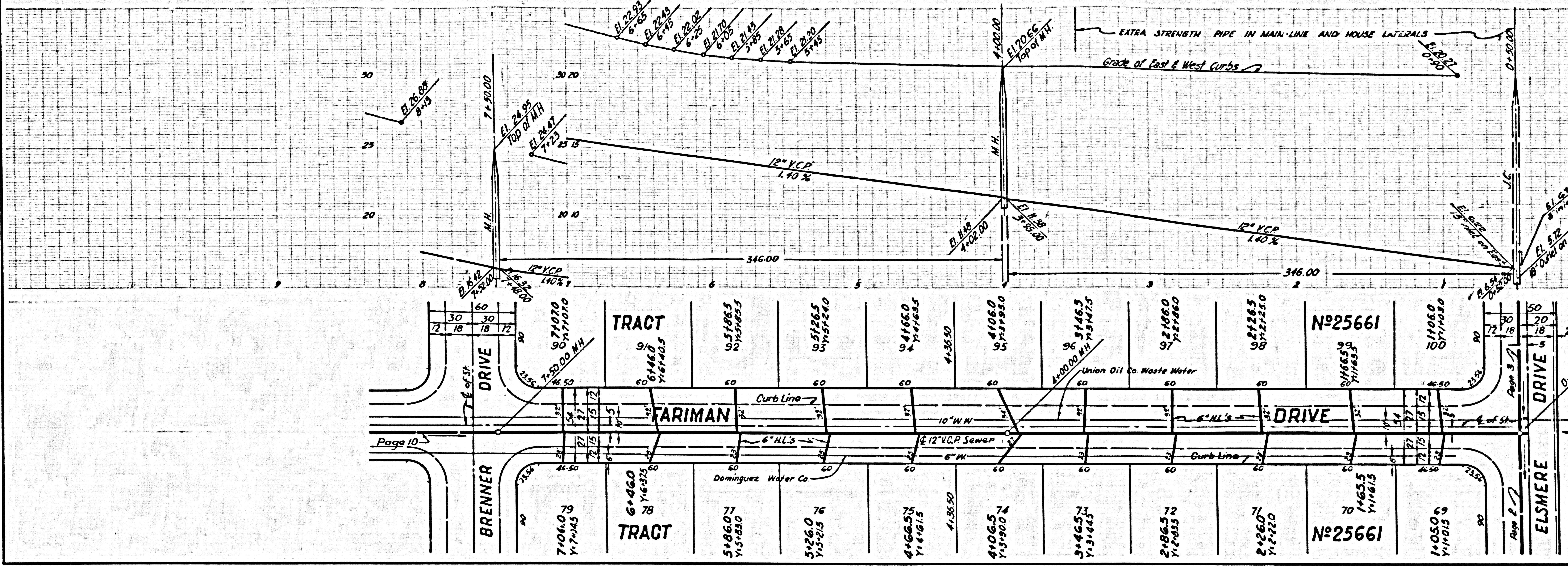
30335





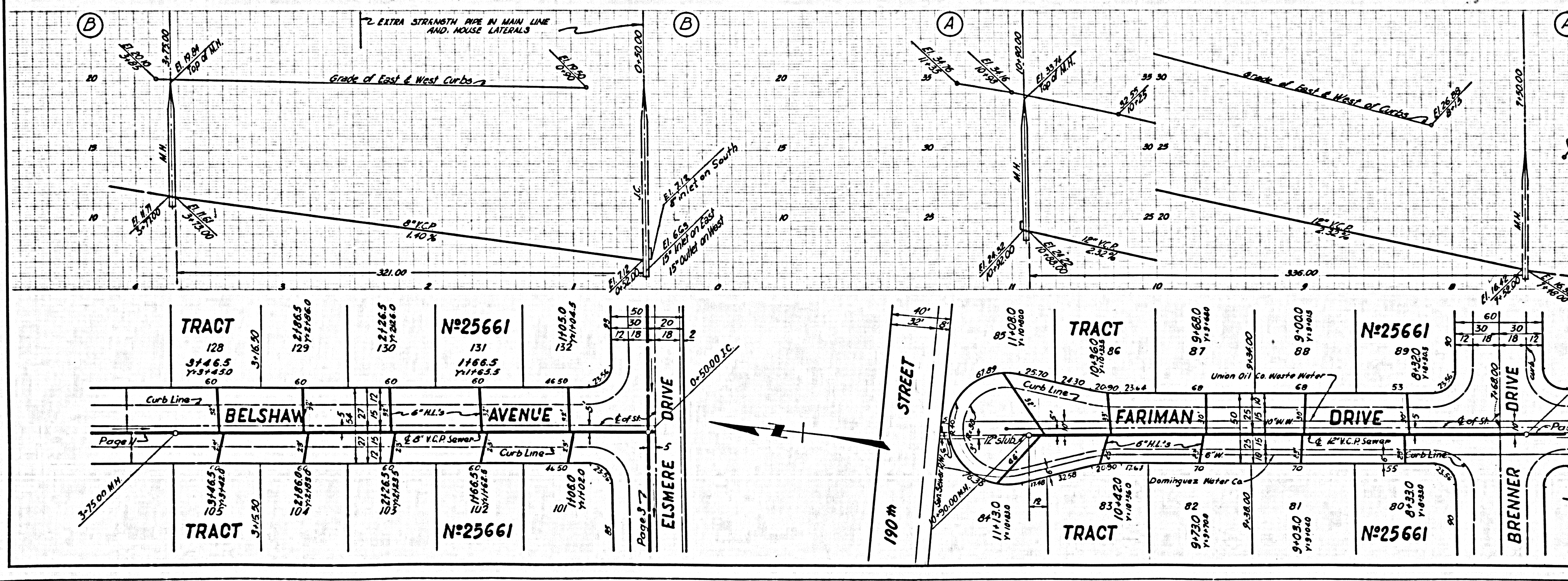
NO CHARGE FOR CONNECTIONS

30339



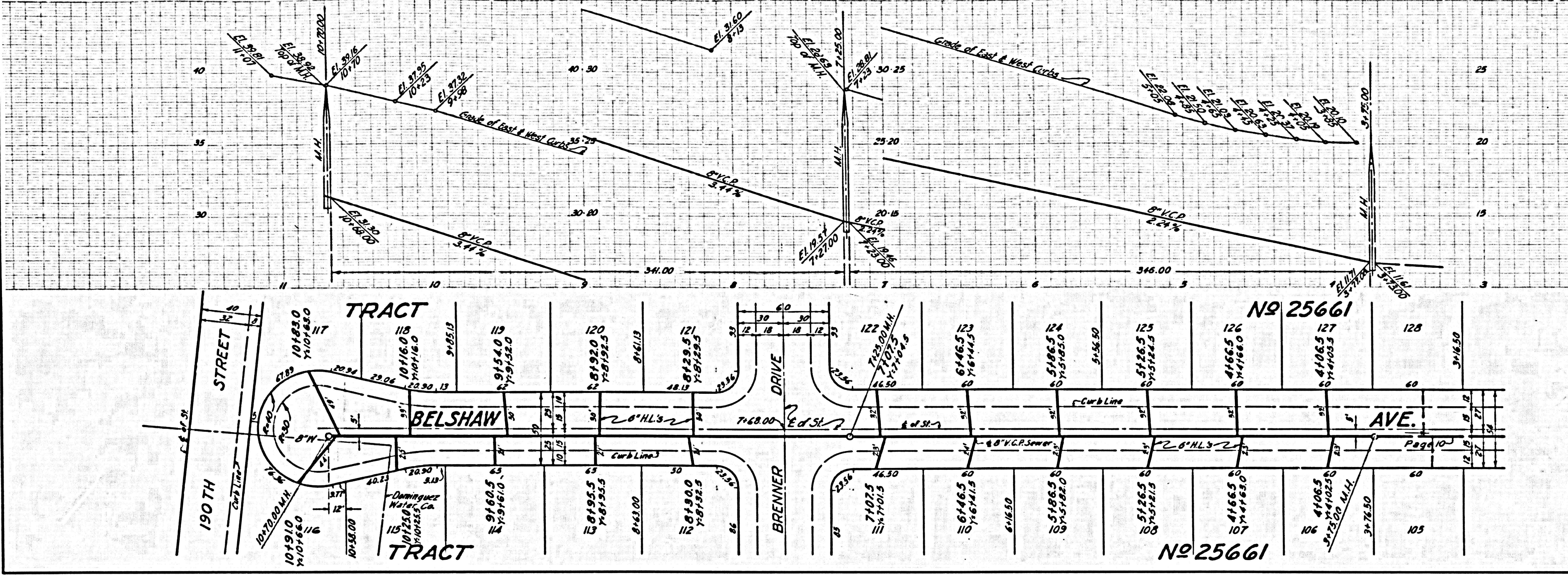
NO CHARGE FOR CONNECTIONS

30338



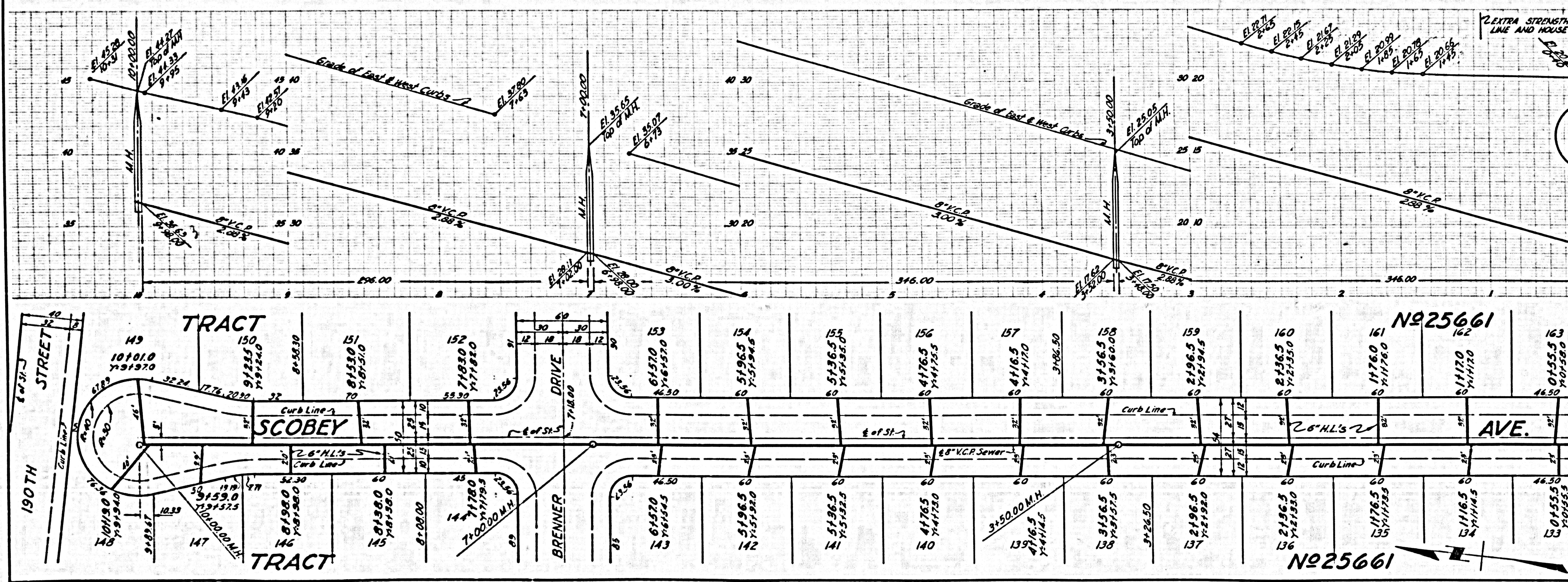
NO CHARGE FOR CONNECTIONS

30340



NO CHARGE FOR CONNECTIONS

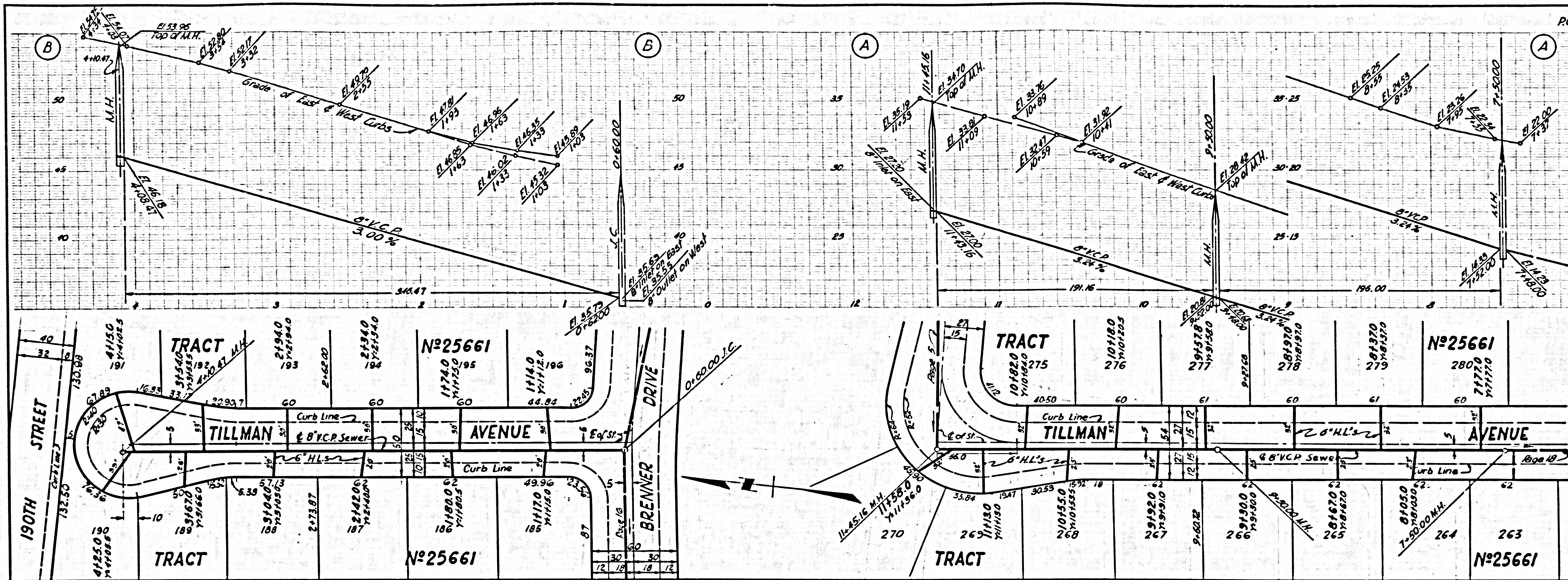
30341



U.S. GEOLOGICAL SURVEY

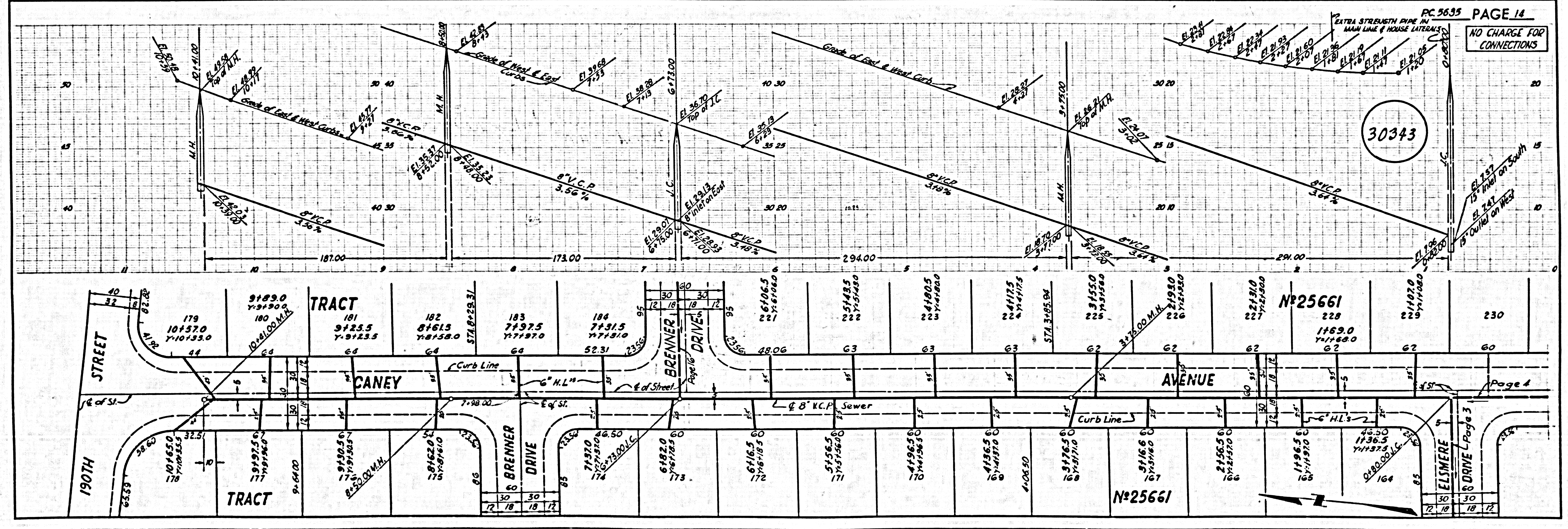
NO CHARGE FOR CONNECTIONS

30342



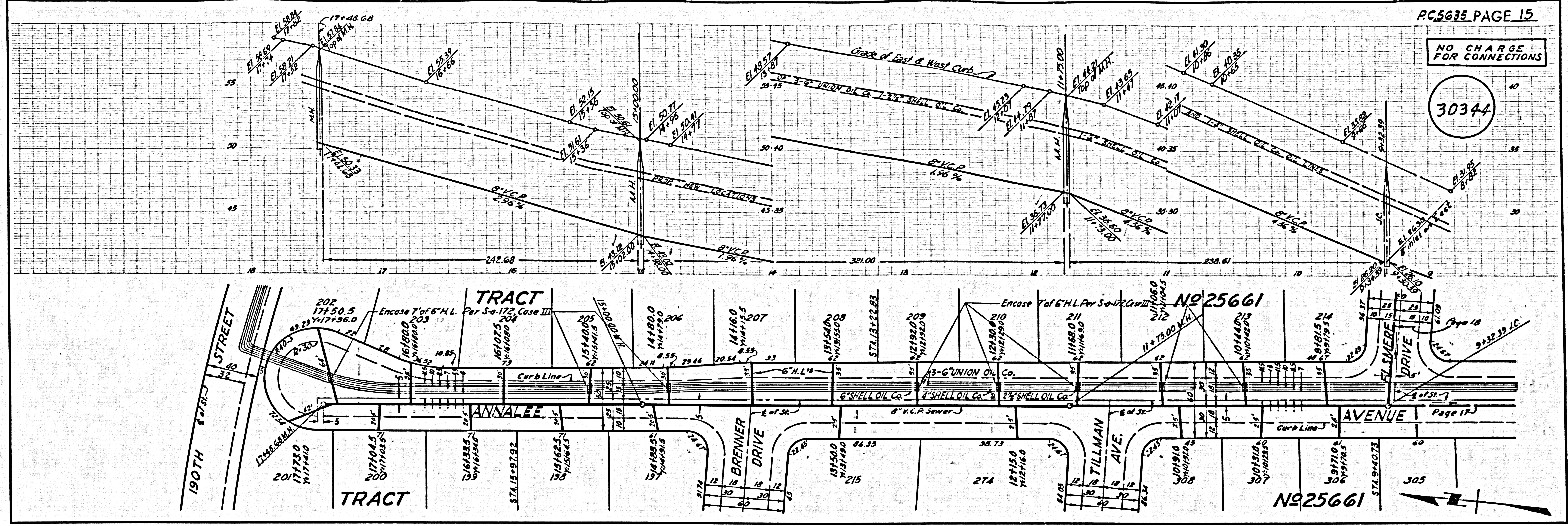
NO CHARGE FOR CONNECTIONS

30343



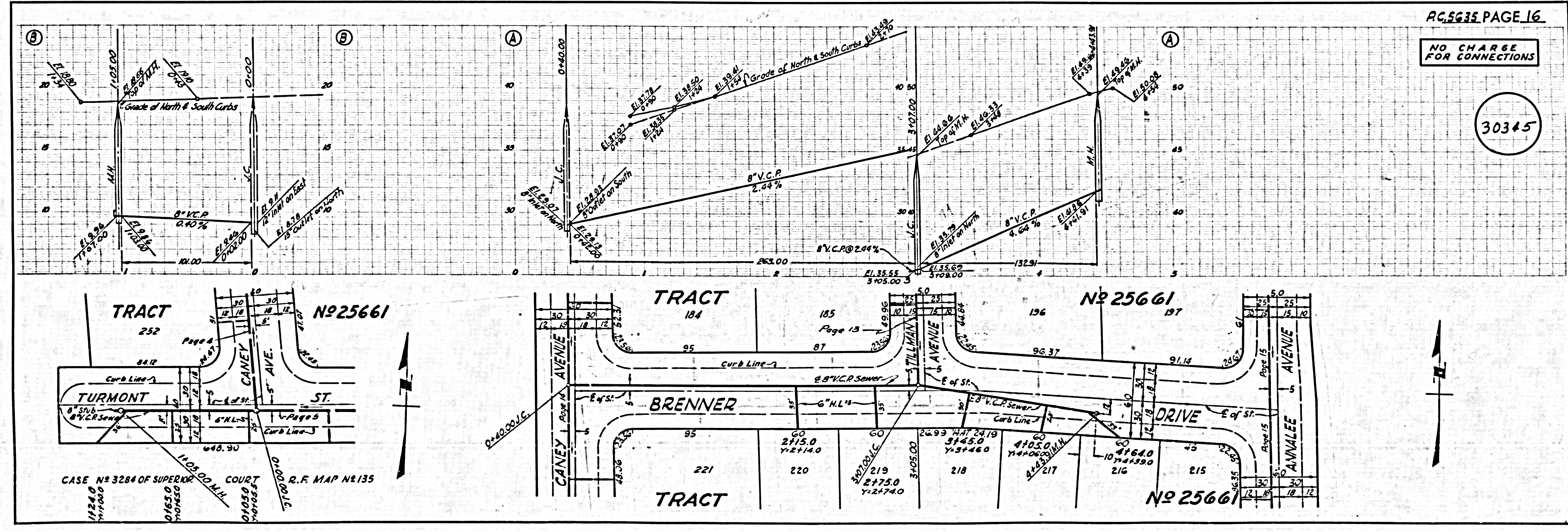
NO CHARGE FOR CONNECTIONS

30344



NO CHARGE FOR CONNECTIONS

30345

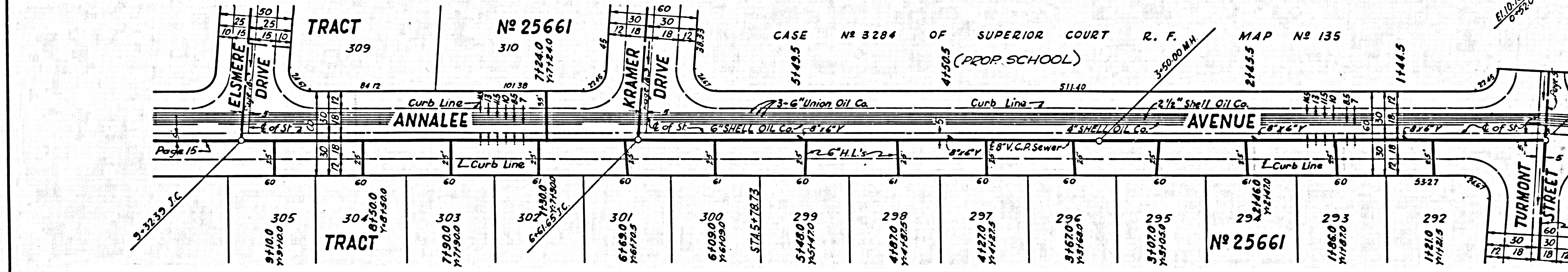
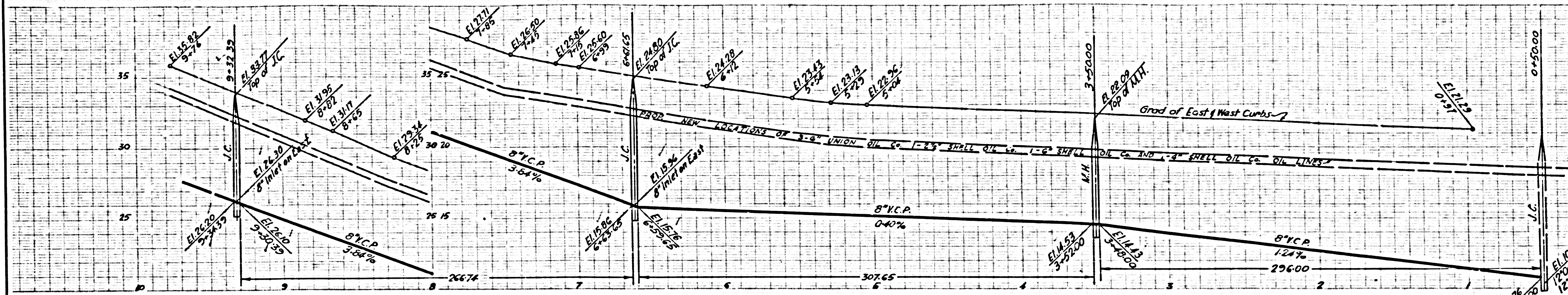


TRACT 252
 TURMONT ST.
 CANEY AVE.
 5' AVE.
 ST.
 CASE NO 3284 OF SUPERIOR COURT
 1124.0
 11100.0
 0165.0
 0103.0
 1103.00 L.H.
 3100.00 R.F. MAP N2135

TRACT 184
 BRENNER AVE.
 TILLMAN AVE.
 DRIVE
 ANNALEE AVE.
 TRACT 185
 TRACT 196
 TRACT 197
 TRACT 221
 TRACT 220
 TRACT 219
 TRACT 218
 TRACT 217
 TRACT 216
 TRACT 215

NO CHARGE FOR CONNECTIONS

30346



NO CHARGE FOR CONNECTIONS

30347

