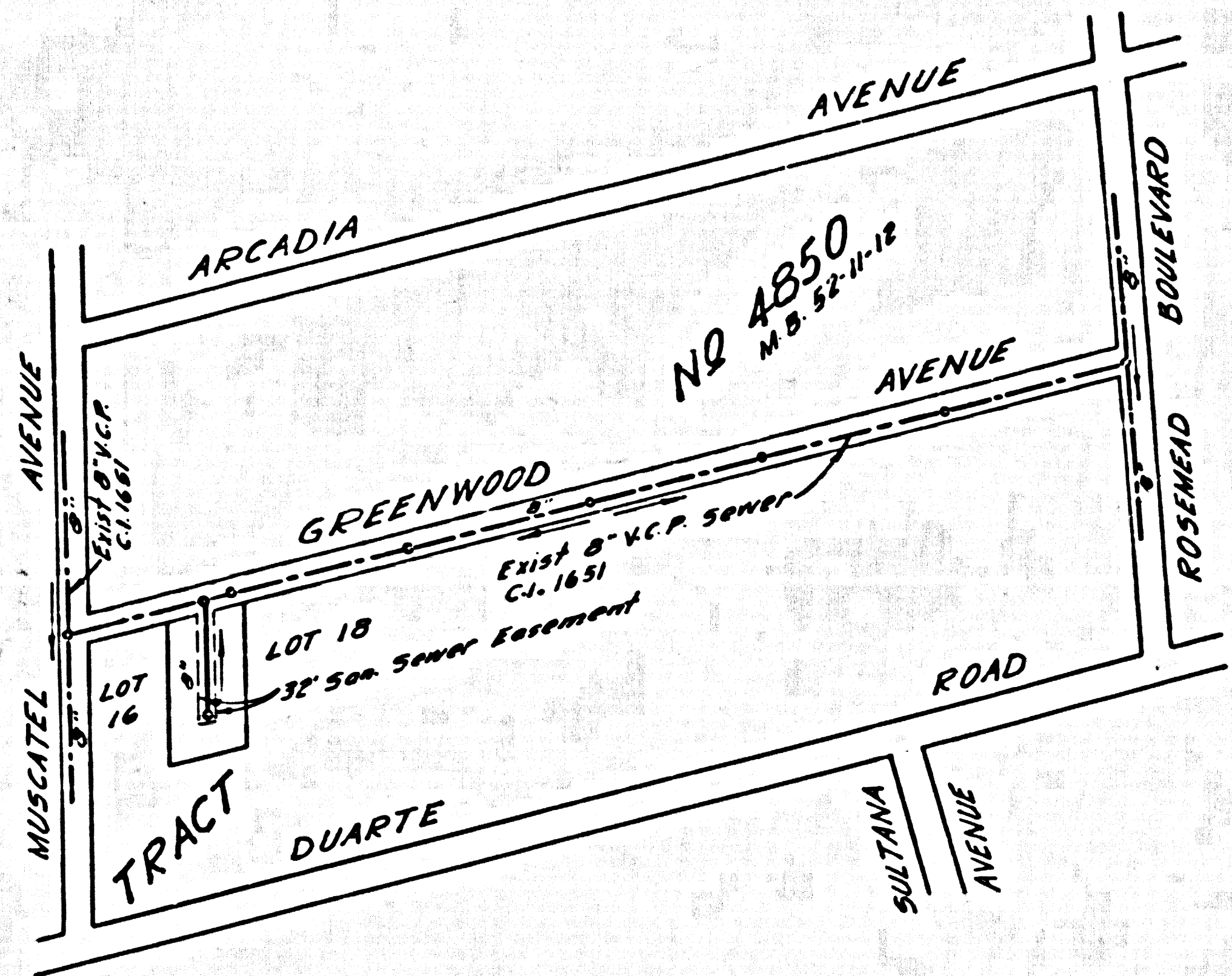


6C-2638 EASEMENT 625291



**INDEX MAP**  
SCALE 1" = 300'  
SEWER EASEMENT R.S. 2691  
P.C. 5638

**NOTE 1:**  
IT SHALL BE THE CONTRACTOR'S RESPONSIBILITY TO LOCATE ALL UNDERGROUND LINES OF EVERY NATURE, WHETHER SHOWN HEREON OR NOT AND PROTECT THEM FROM DAMAGE. THE CONTRACTOR SHALL BEAR THE TOTAL EXPENSE OF REPAIR TO ANY LINE DAMAGED BY ANY OPERATION IN CONNECTION WITH THE PROSECUTION OF THIS WORK.

**NOTES:**

1. PROVIDE STAKES ON THE PROPERTY LINE OR PROPERTY LINES PRODUCED AT RIGHT ANGLES TO THE SEWER LINE AT THE CENTER LINE OF EACH MANHOLE.
2. NO REPRESENTATIVE OF THE COUNTY ENGINEER WILL SURVEY OR LAY OUT ANY PORTION OF THE WORK.
3. THE OWNER OR HIS AUTHORIZED REPRESENTATIVE SHALL FURNISH THE COUNTY ENGINEER WITH GRADE SHEETS AND STATIONING FOR ALL HOUSE LATERALS AND Y BRANCHES AND SHALL PROVIDE STAKES FOR THEM AT THEIR PROPER LOCATIONS WITH STATIONING PLAINLY MARKED. ANY CHANGE IN LOCATION SHALL BE REQUESTED IN WRITING BY THE OWNER OR HIS REPRESENTATIVE.
4. THE PRIVATE ENGINEER SHALL FURNISH THE HOUSE LATERAL DEPTH AT THE PROPERTY LINE BELOW THE TOP OF CURB ELEVATION FOR EACH HOUSE LATERAL ON THE GRADE SHEET.
5. NO REVISIONS SHALL BE MADE IN THESE PLANS WITHOUT THE APPROVAL OF THE COUNTY ENGINEER.
6. USE STANDARD MANHOLE FRAMES AND COVERS, S-111.
7. USE STANDARD STRENGTH PIPE EXCEPT AS NOTED.
8. USE CEMENT MORTAR OR "EPOX-LOC" OR "SPED-SEAL" FOR ALL V.C.P. JOINTS PER SPEC'S, SECS. 16 & 14.
9. RESURFACE ALL TRENCH WITHIN PAVED AREA TO MEET L.A. COUNTY ROAD DEPT. OR CALIF. STATE HIGHWAY REQUIREMENTS IN ACCORDANCE WITH PERMITS.
10. ENCASE FOUR FEET OF SEWER AT POINTS OF INTERFERENCE WITH POLES, CASE III, S-172.
11. HOUSE LATERALS TO BE CONSTRUCTED WITH INVERTS AT R/W LINE 6 FEET BELOW GRADE OF SURFACE OVER SEWER.
12. ALL STRUCTURES SHALL BE BRICK SEWER STRUCTURES, S-104.
13. FOR ALLOWABLE LEAKAGE TEST USE FORMULA NO. 1 SPEC'S, SEC. 14.
14. MANHOLE TOPS IN UNIMPROVED RIGHTS-OF-WAY TO BE LEVEL WITH FINISHED GRADE.
15. THE CONTRACTOR SHALL NOTIFY THE CONSTRUCTION DIVISION BY TELEPHONE, MADISON 8-491, EXT. 8551 AT LEAST TWENTY-FOUR HOURS BEFORE STARTING ANY WORK UNDER THIS CONTRACT.
16. STANDARD SPECIFICATIONS DATED JANUARY 1, 1960 SHALL BE USED IN THE CONSTRUCTION OF THIS PROJECT.

B.M. T.F. 62, F.B. 1734-52 At Muscatel Ave. & Greenwood, N.E. Corner Bl. Spk. 14  
Concrete Walk To House # 8705  
Elev. 521.604

**NO CHARGE FOR CONNECTIONS**  
10/6/60

PROFILE ALIGNMENT AND GRADE OF **P.C. 5638**  
**SANITARY SEWERS PAGE 1**  
TO BE CONSTRUCTED IN **J.N. 0354.32**

**SEWER EASEMENT R.S. 2691**  
**PRIVATE CONTRACT NO. 5638**

W.S. 44 C3  
1 SHEETS; 2 PAGES  
SCALE: VERT. 1" = 4' HORIZ. 1" = 40'  
AUGUST, 1960  
PREPARED IN THE OFFICES OF  
**KEMMERER ENGR. CO. INC.**  
By Robert R. Flores  
REG. C. E. NO. 11342

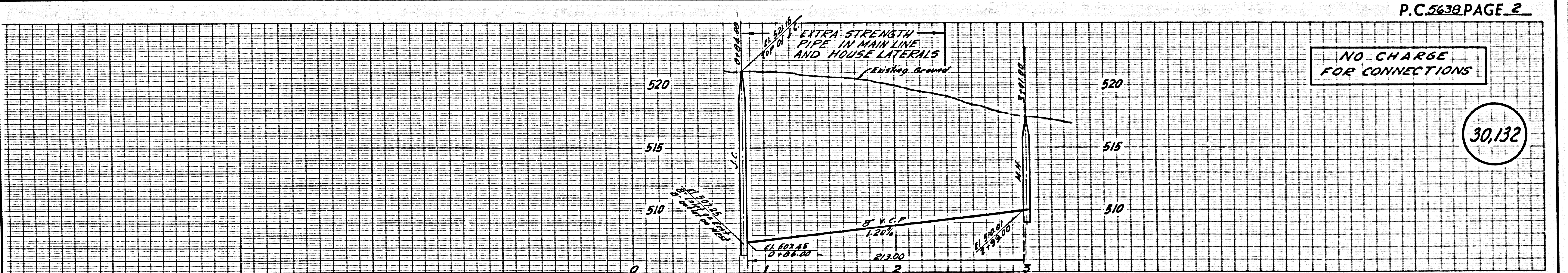
30,131

FOR LEGEND SEE PLAN NO. S-A-41

**NOTE:**  
GRADES TO WHICH THIS IMPROVEMENT IS TO BE CONSTRUCTED ARE SHOWN ON PLANS AND PROFILES. GRADE POINTS FOR TOP OF CURBS, CENTER LINE OF STREETS OR CENTER LINE OF ALLEYS ARE SHOWN BY CIRCLES ON PROFILES. AT ALL POINTS BETWEEN DESIGNATED POINTS THE GRADE SHALL BE ESTABLISHED SO AS TO CONFORM TO A STRAIGHT LINE DRAWN BETWEEN SAID DESIGNATED POINTS.  
ELEVATIONS ARE IN FEET ABOVE U.S.C. & G.S. SEA LEVEL, BATHYD OF 1929.  
THIS DRAWING AND THE DATA HEREON ARE HEREBY MADE A PART OF THE SPECIFICATIONS.  
WORK SHALL BE CONSTRUCTED ACCORDING TO SPECIFICATIONS ON FILE IN THE OFFICE OF THE COUNTY ENGINEER AND SHALL BE PROSECUTED ONLY IN THE PRESENCE OF THE COUNTY ENGINEER.  
BEFORE WORK CAN BE STARTED THE CONTRACTOR MUST OBTAIN A PERMIT TO EXCAVATE IN COUNTY STREETS FROM THE L. A. COUNTY ROAD DEPT., DISTRICT OFFICE NO. 1 AND PAY A FEE OF \$50.00 TO THE COUNTY ENGINEER ROOM 124 FAY AMERICAN BUILDING, 314 SO. BROADWAY SUFFICIENT TO COVER THE COST OF CONSTRUCTION INSPECTION AND RECORD PLANS.  
APPROVAL OF THIS PLAN BY THE COUNTY OF LOS ANGELES DOES NOT CONSTITUTE A REPRESENTATION AS TO THE ACCURACY OF THE LOCATION OF OR THE EXISTENCE OR NON-EXISTENCE OF ANY UNDERGROUND UTILITY PIPE, OR STRUCTURE WITHIN THE LIMITS OF THIS PROJECT. THIS NOTE APPLIES TO ALL PAGES.  
IF WORK IS TO BE DONE IN A STATE HIGHWAY, A PERMIT MUST BE OBTAINED FROM THE STATE OF CALIFORNIA, DIVISION OF HIGHWAYS, 128 SOUTH SPRING STREET.

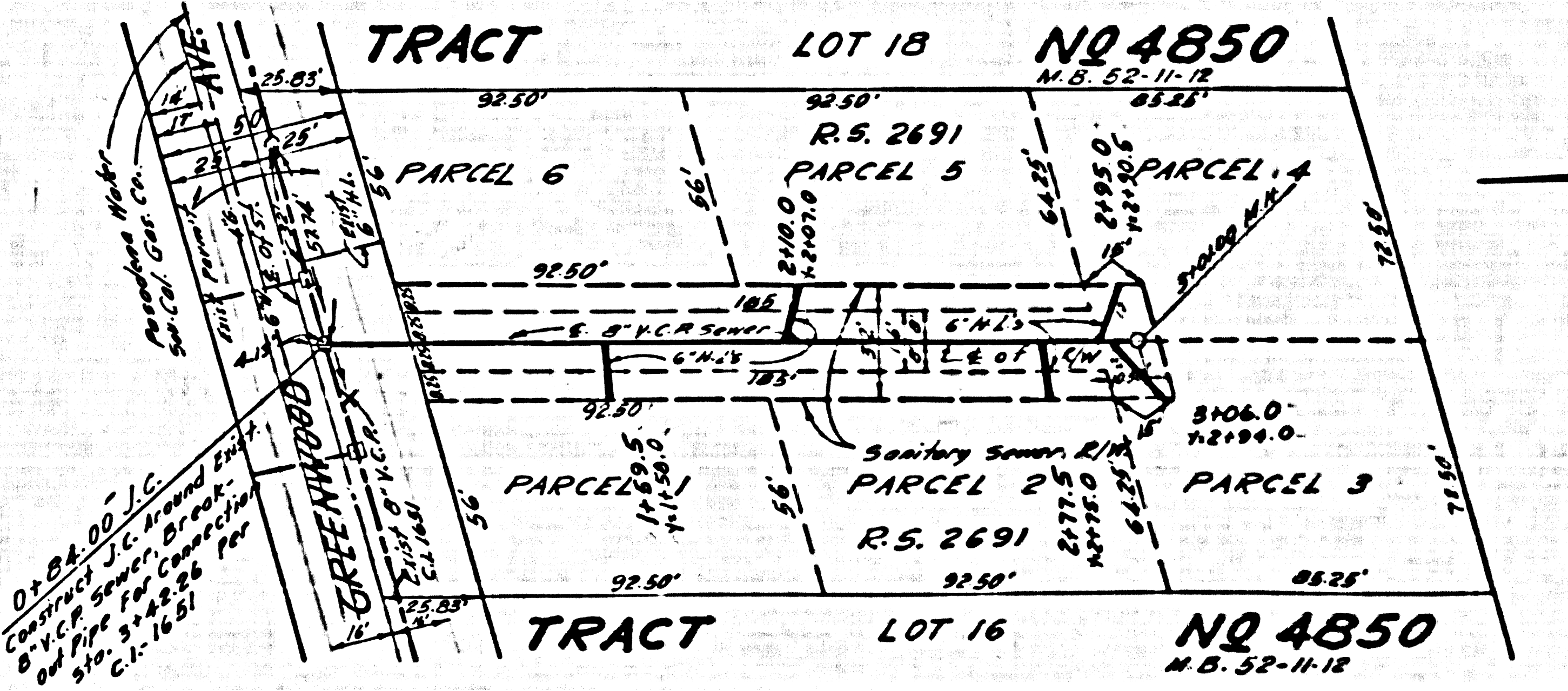
**COUNTY OF LOS ANGELES, CALIFORNIA**  
APPROVED, JOHN A. LAMBIE, COUNTY ENGINEER  
APPROVED, C.R. COMPTON, CHIEF ENGINEER  
CO. ENR. DIV. NO. 127  
BY C.R. Compton SANITATION ENGINEER BY R. Flores OFFICE ENGINEER  
CHECKED BY St. Underhill  
OFFICE OF COUNTY ENGINEER, REG. C. E. NO. 2416

SUBMITTED: N.F. Brannan  
SAN GABRIEL VALLEY REGIONAL ENGINEER



**NO CHARGE FOR CONNECTIONS**

30,132



P.C. 5638 PAGE 2