

LA MIRADA BLDG. DIST. NO. 4.08

PROFILE ALIGNMENT AND GRADE OF P.C. 5640
 SANITARY SEWERS PAGE 1
 TO BE CONSTRUCTED IN

TRACT NO. 25795

PRIVATE CONTRACT NO. 5640

2 SHEETS, 2 PAGES
 SCALE: VERT. 1"=4' HORIZ. 1"=40'

FEB. 1961
 PREPARED IN THE OFFICES OF
 KEMMERER ENGINEERING CO., INC.

Robert R. Flors
 REG. C. E. NO. 11349

FOR LEGEND SEE PLAN NO. S-A-64

NOTE: GRADES TO WHICH THIS IMPROVEMENT IS TO BE CONSTRUCTED AND SHOWN ON PLANS AND PROFILES, GRADE POINTS FOR TOP OF CURBS, CENTER LINE OF STREETS, OR CENTER LINE OF ALLEYS ARE SHOWN BY CIRCLES ON PROFILES. AT ALL POINTS BETWEEN DESIGNATED POINTS THE GRADE SHALL BE ESTABLISHED SO AS TO CONFORM TO A STRAIGHT LINE DRAWN BETWEEN SAID DESIGNATED POINTS.

ELEVATIONS ARE IN FEET ABOVE U.S.C. & G.S. MEAN SEA LEVEL UNLESS OTHERWISE NOTED.

THIS DRAWING AND THE DATA HEREON ARE HEREBY MADE A PART OF THE SPECIFICATIONS.

WORK SHALL BE CONSTRUCTED ACCORDING TO SPECIFICATIONS ON FILE IN THE OFFICE OF THE CIVIL ENGINEER AND SHALL BE INSPECTED ONLY IN THE PRESENCE OF THE CIVIL ENGINEER.

BEFORE WORK CAN BE STARTED, THE CONTRACTOR MUST OBTAIN A PERMIT TO EXCAVATE IN COUNTY SUBDIVISION FROM THE L.A. COUNTY ROAD DEPT. AND A PERMIT TO EXCAVATE IN CITY SUBDIVISION FROM THE CITY ENGINEER.

APPROVAL OF THIS PLAN BY THE CIVIL ENGINEER OF L.A. COUNTY DOES NOT CONSTITUTE A REPRESENTATION AS TO THE ACCURACY OF THE LOCATION OF OR THE EXISTENCE OR NON-EXISTENCE OF ANY UNDERGROUND UTILITY PIPE, OR STRUCTURE WITHIN THE LIMITS OF THE PROJECT. THIS NOTE APPLIES TO ALL PAGES.

IF WORK IS TO BE DONE BY A STATE HIGHWAY, A PERMIT MUST BE OBTAINED FROM THE STATE OF CALIFORNIA, DIVISION OF HIGHWAYS, 120 SOUTH SPRING STREET.

CITY OF LA MIRADA, CALIFORNIA

APPROVED, JOHN A. LAMBIE, CITY ENGINEER APPROVED, C.E. CAMPBELL, CHIEF ENGINEER

BY [Signature] BY [Signature]
 ASST. SANITATION ENGINEER OFFICE ENGINEER

CHECKED BY [Signature]
 OFFICE OF CIVIL ENGINEER, REG. C. E. NO. 2456

SUBMITTED BY: [Signature] 2-3-61
 LOS CERRITOS REGIONAL ENGINEER R.C.S. NO. 309

NOTE: IT SHALL BE THE CONTRACTOR'S RESPONSIBILITY TO LOCATE ALL UNDERGROUND LINES OF EVERY NATURE WHETHER KNOWN OR UNKNOWN OR NOT AND PROTECT THEM FROM DAMAGE. THE CONTRACTOR SHALL BEAR THE TOTAL EXPENSE OF REPAIR TO ANY LINE DAMAGED BY ANY OPERATIONS IN CONNECTION WITH THE PROSECUTION OF THIS WORK.

REVISION
 On page 4, Hartdale Ave., extend the main line sewer 23.50 feet and relocate the end manhole from Sta. 11+30.15 to Sta. 11+53.65 and construct said manhole with 5 ft. inside diameter, vertical side, and offset to the west.

Approved by: [Signature]
 Reg. C.E. No. 12437

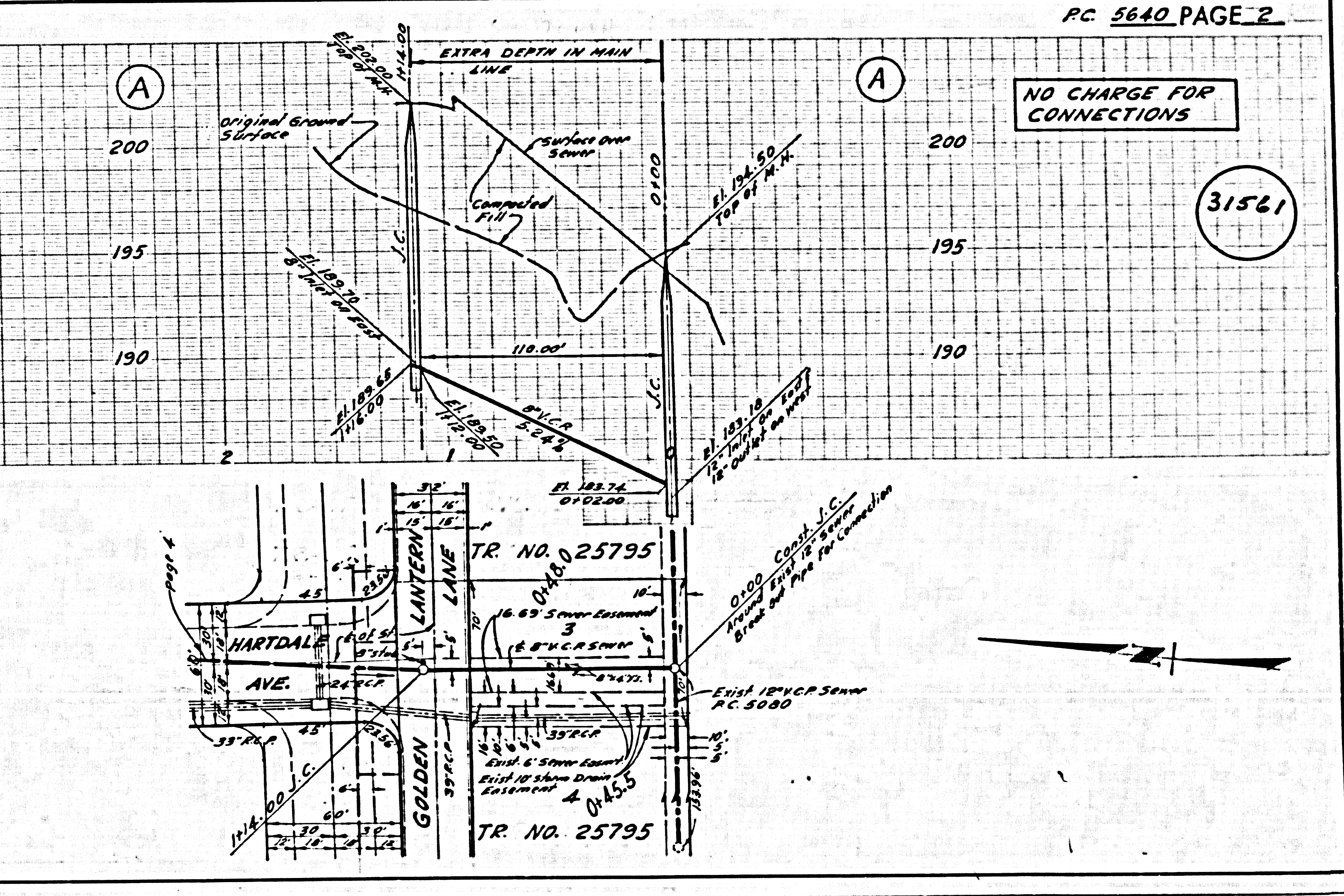
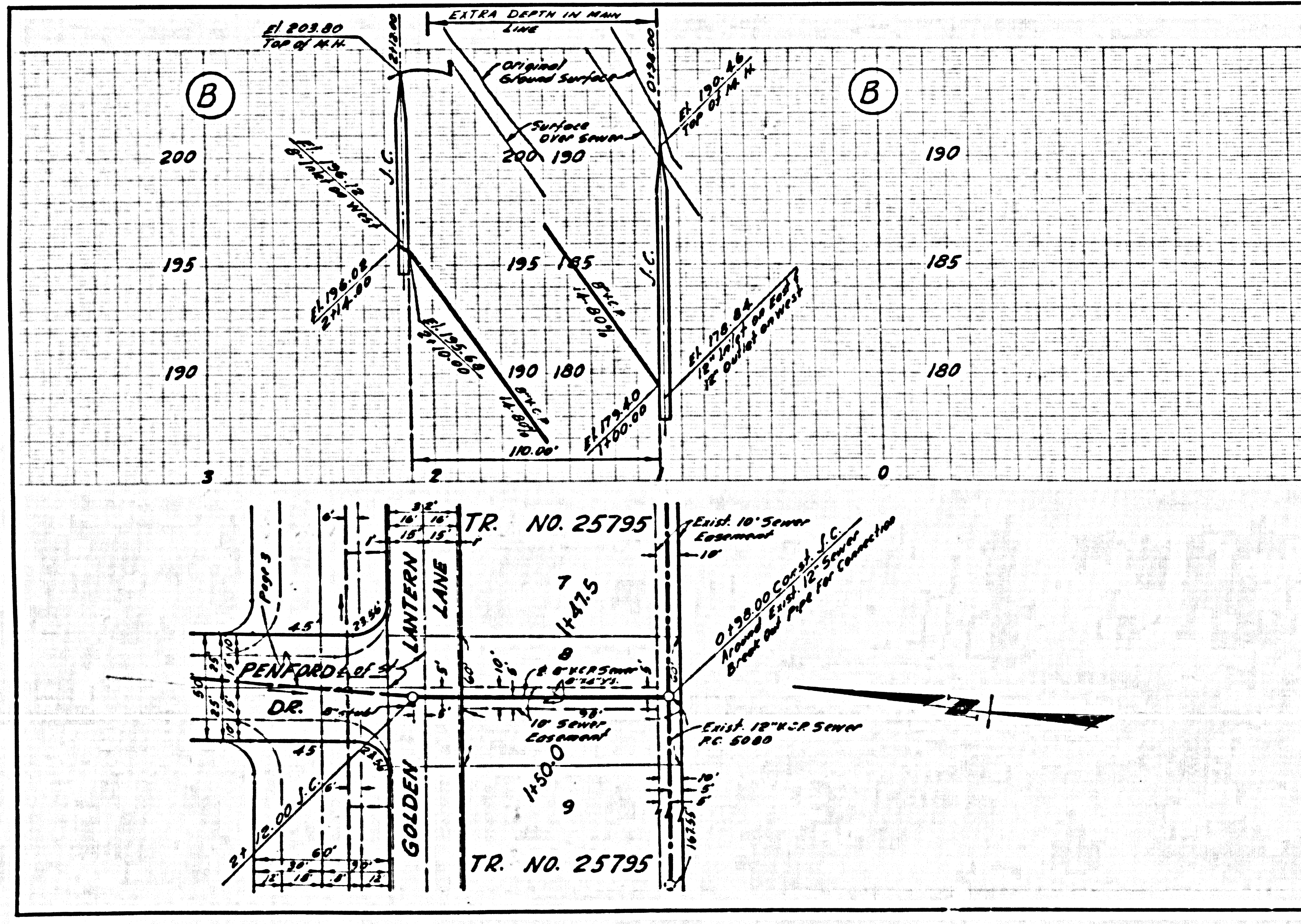
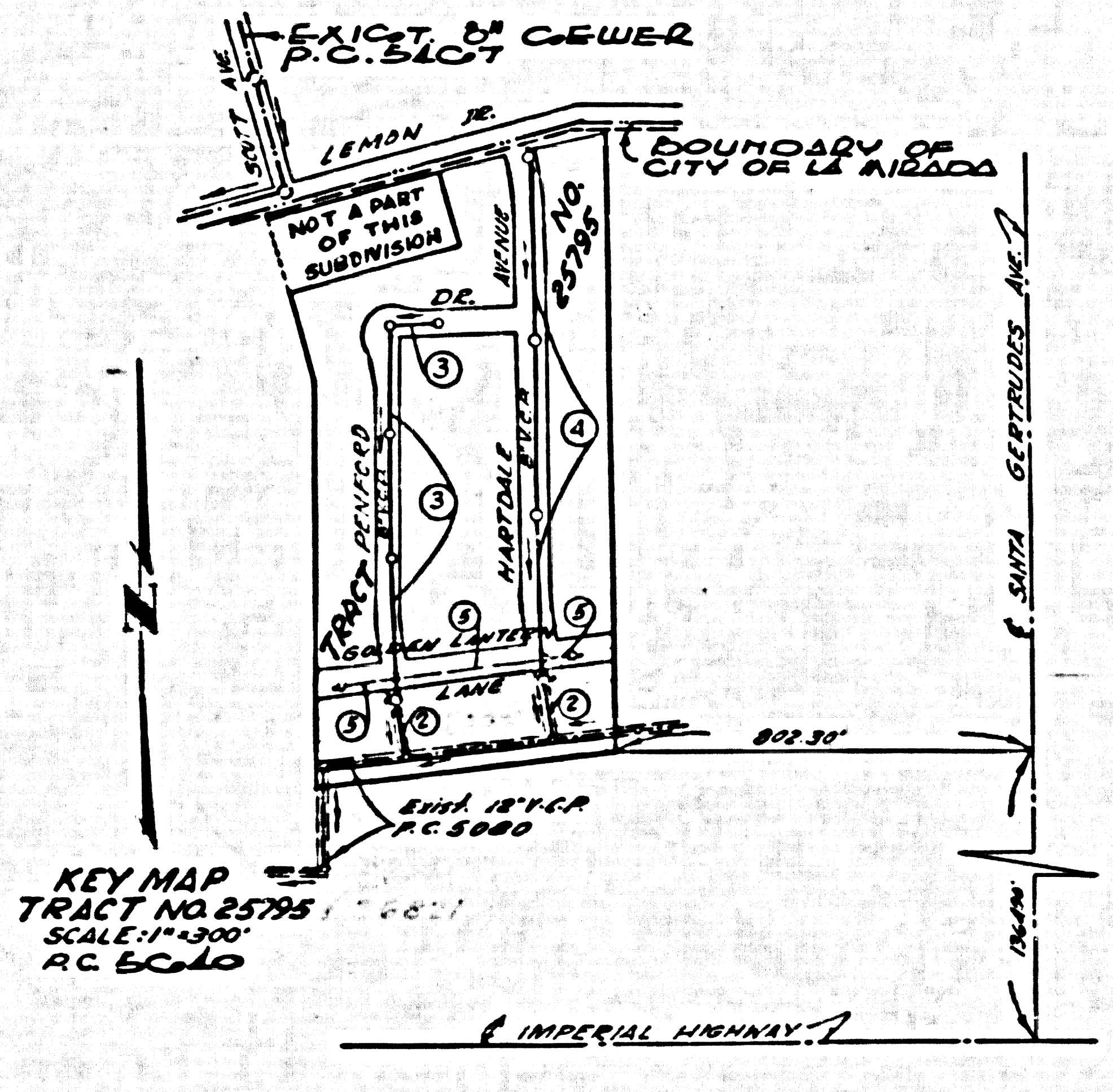
BENCH MARK
 BY 4016 L.F.N. East Edge Conc. Drive
 At House No. 15749, 46 1/2 N. E. Lemon Drive,
 W. 251's From E. of Santa Gertrudis Ave.
 Elev. 246.050 La Mirada Quad 1955

REVISION
 Revised As Shown On All Pages Of These Plans, for Information Concerning The Revision Details and The Changes Made, From The Original Plans, For The Change of Plan scale, Dated November 3, 1961, Attached Here To Be On File With The Department of County Engineer, Sanitation Division.

Approved by: [Signature]
 Reg. C.E. No. 12437

NO CONNECTIONS FOR THE DISPOSAL OF INDUSTRIAL WASTES SHALL BE MADE TO SEWERS SHOWN ON THESE DRAWINGS WITHOUT WRITTEN PERMISSION FROM THE CHIEF ENGINEER AND GENERAL MANAGER OF THE COUNTY SANITATION DISTRICTS.

NO CHARGE FOR CONNECTIONS
 D.M. Hopkins 2-3-61



NO CHARGE FOR CONNECTIONS
 31561

